

MARSHLAND ST. JAMES SCHOOL

NEWSLETTER



ISSUE 1 - FRIDAY 5TH SEPTEMBER 2025

Dear Parents and Carers, welcome to a New School Year!

It has been wonderful to spend our first week back in school, a week that has been filled with exciting activities and new experiences for us all! I have been so pleased to see that the children in all classes have settled in well, from our youngest Nursery children, right up to those at the top end of the school - who have been setting a good example to others at all times.

We have started the new term strong, with a full staff team who are full of enthusiasm and ready to inspire your children with our Knowledge Rich Curriculum.

I would like to take this opportunity to thank you all for how I have been made to feel so welcome this week. It has been a real privilege to begin to get to know you all, and I look forward to the coming weeks so that we can strengthen our relationships.

Have a great weekend! Ms. Lucca and the Marshland Team.

IMPORTANT REMINDERS

Timings of the day:

8.30am - Side gate opens

8.35am - Classroom doors open

8.45am - Side gate closes

When side gate is closed, please sign in through the main reception.

3.10 - Side gate open ready for 3.15 end of day.

BREAKFAST CLUB

We are happy to announce that after some consideration, we will continue to offer Breakfast Club from 7.45 am every morning. The cost for this will be £4.50 to include breakfast and £2.50 for wraparound care only.

We will be re-assessing the viability of the club at half term, so please do use it!

UPCOMING EVENTS

September

October

23rd: Parent Consultations

24th: Training Day - Children should not attend school

More dates will be added each week so please do check.



CLUBS

Clubs will begin w/c 15/9/25.

This half term we will be offering:

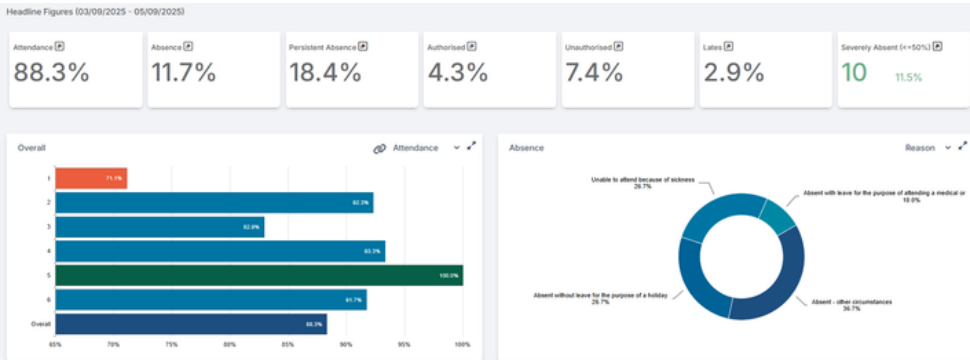
- Sport Club
- Choir
- Craft Club

More details to follow!

PAYMENTS

Please remember that we are a cashless school, all payments will be made through Bromcom - don't forget to download the app.

If you have any problems with it, please pop in and see Mrs Beale in the office.

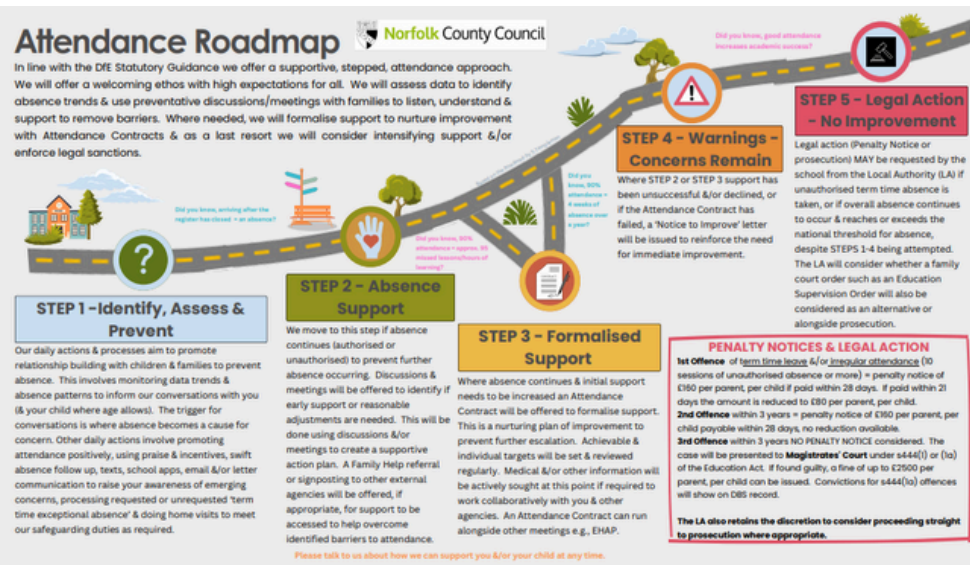


ATTENDANCE

Our whole school attendance this week is only 88.3%, national expectation is 96%.

Let's work together to improve on this next week. Only by being in school every day can your child achieve their true potential.

Please come and see me if you need any support.



The Parable of the Mustard Seed (Matthew 13:31-32)
'The smallest of seeds... becomes a tree.'



OUR THOUGHTS FROM
COLLECTIVE WORSHIP
TODAY.