

# FRANCS ANGUS

## ON-FARM SPRING SALE 2025

Thursday 2<sup>nd</sup> October 2025 - Gates open 11:00AM, Sale begins at 1:00PM



Francs Angus, 2957 Carngham-Streatham Rd, Beaufort VIC 3373

Phone: 0407 406 509 • Website: [www.francsangus.com.au](http://www.francsangus.com.au)





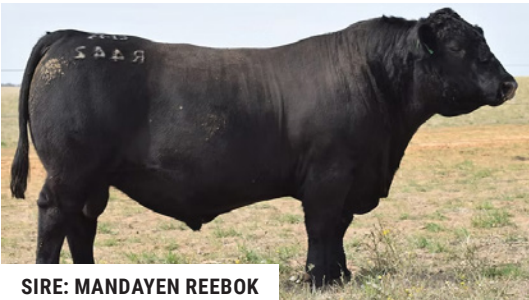
SIRE REFERENCE: SIRES RECENTLY USED



SIRE: LVVF TANKER



SIRE: PINE VIEW MOGUL



SIRE: MANDAYEN REEBOK



SIRE: MERRIDALE Q-FLIP

# WELCOME TO FRANCS ANGUS SPRING SALE 2025

Welcome to our 3rd annual On-farm Spring sale.

This sale will be run in conjunction with AuctionsPlus using the Helmsman Auction system.

This years bulls are 18 months old and once again are displayed in good working order. Our bulls are not overfed and we like to describe our bulls as "fit not fat".

This years sale bulls are sired by industry leading sires, both AI and out own walking bulls. Angus stud bulls have been produced on this Jinamoc property for 70 years. We endeavour to breed cattle that are true to the Angus breed. Exceptional phenotype with, structural strength and docile temperament.

All bulls have been genomic tested and sire verified. All working together to give the best possible information.

Franco Angus is a true family run operation, we supply quality bulls and a personal service that leaves customers satisfied.

## HEALTH

All bulls have had 2 doses of Pestiguard, Vibrovax and 7 in 1. Bulls were drenched with Eprimectin 02/08/25.

## CARING FOR YOUR NEW BULL

These bulls have ran in a herd since birth and have never been alone, please have companions in the yards for them to go in with when they arrive at your farm.

## INSURANCE

An insurance agent will be available on sale day to organise insurance, we strongly recommend all bulls be insured for their 1st working 12 months at the fall of the hammer.

## REBATE

A 3% rebate to outside agents accompanying clients to the sale and settling within 7 days.

## DELIVERY

Delivery of bulls will be coordinated after the sale. Bulls are delivered free of charge in the state of Victoria.

## FERTILITY

As with any species, fertility can be a problem. This is why we semen test ALL sale bulls. Bulls are examined by Nationwide Artificial Breeders for erection abnormalities and satisfactory sperm count specifications.

The visual test includes penile warts, hair rings, injuries and penile frenulums by undergoing a physical examination of the external genitalia and conformation. The crush side semen test involves qualified analysis of spermatozoa for motility, concentration, morphology and semen vesiculitis.

This information provides testicular and epididymal function which helps predict the potential fertility of the bull. Only bulls that pass this strict testing regime are certified and make the sale list.

LOT 1

FRANC'S ANGUS V18<sup>SV</sup>

VKP24V18

Date of Birth: 29/02/2024

Register: APR

Sire: CASINO BOMBER N33<sup>#</sup>

Sire: LVVF TANKER 14<sup>PV</sup>

Dam: LVVF LEGEND 842<sup>#</sup>

Sire: MILLAH MURRAH KLOONEY K42<sup>PV</sup>

Dam: KOORNANG PARK FRANCS P2<sup>#</sup>

Dam: KOORNANG PARK M24<sup>#</sup>

Notes: Here's a bull with plenty of power & punch, visually impressive, by LVVF Tanker - A new & exciting sire. Rare to get a bull like this; with such a low birth-weight of 1.1 but still good growth.

Mid August 2025 TransTasman Angus Cattle Evaluation													
	Calving Ease				Growth			Maternal			Fertility		
	Calving Ease Dir	Calving Ease Dtrs	Gestation Length	Birth Weight	200 Day Growth	400 Day Weight	600 Day Weight	Mat. Cow Weight	Mat. Body Condition	Mat. Cow Height	Milk	Days to Calving	Scrotal Size
EBV	+7.3	+6.4	-5.9	+1.1	+51	+99	+124	+100	+0.32	+9.4	+24	-3.9	+3.2
Acc	64%	53%	82%	81%	82%	80%	80%	77%	66%	71%	73%	39%	77%
Perc	12	20	28	6	53	33	42	54	35	28	9	69	17
	Carcase				Feed Efficiency			Structural			Selection Index		
	Docility	Carcase Weight	Eye Muscle Area	Rib Fat	Rump Fat	Retail Beef Yield	IMF	NFI-F	Claw Set	Foot Angle	Leg Angle	Angus Breeding Index	Angus Breeding Low Feed Cost Index
EBV	+23	+77	+3.2	-2.2	-5.2	+0.4	+2.2	+0.23	+0.72	+0.90	+1.00	\$183	\$336
Acc	75%	69%	68%	68%	69%	59%	73%	60%	68%	68%	61%	-	-
Perc	42	27	85	90	98	47	54	50	26	34	43	75	66
Traits Observed: GL_Genomics													

LOT 2

FRANC'S ANGUS V41<sup>SV</sup>

VKP24V41

Date of Birth: 07/03/2024

Register: APR

Sire: SPRING COVE RENO 4021<sup>#</sup>

Sire: PINE VIEW MOGUL G241<sup>PV</sup>

Dam: BALDRIDGE ISABEL C773<sup>#</sup>

Sire: WITHERSWOOD BOS K0092<sup>PV</sup>

Dam: KOORNANG PARK FRANCS N14<sup>#</sup>

Dam: KOORNANG PARK J41<sup>#</sup>

Notes: Bull by Pine View Mogul who ticks most boxes visually, attractive to look at, growth rates that are elite, sure to add profit to any enterprise.

Mid August 2025 TransTasman Angus Cattle Evaluation													
	Calving Ease				Growth			Maternal			Fertility		
	Calving Ease Dir	Calving Ease Dtrs	Gestation Length	Birth Weight	200 Day Growth	400 Day Weight	600 Day Weight	Mat. Cow Weight	Mat. Body Condition	Mat. Cow Height	Milk	Days to Calving	Scrotal Size
EBV	-3.7	-0.8	-2.9	+5.8	+63	+113	+143	+127	+0.28	+6.4	+19	-4.9	+1.6
Acc	66%	53%	83%	82%	83%	81%	81%	78%	65%	69%	73%	39%	79%
Perc	90	85	75	86	9	8	11	17	45	80	37	46	70
	Carcase				Feed Efficiency			Structural			Selection Index		
	Docility	Carcase Weight	Eye Muscle Area	Rib Fat	Rump Fat	Retail Beef Yield	IMF	NFI-F	Claw Set	Foot Angle	Leg Angle	Angus Breeding Index	Angus Breeding Low Feed Cost Index
EBV	+24	+77	+7.0	-3.3	-4.2	+1.5	-0.4	-0.38	+0.50	+0.66	+0.94	\$204	\$357
Acc	77%	69%	69%	69%	70%	60%	73%	61%	69%	69%	66%	-	-
Perc	37	28	43	97	96	5	98	5	4	3	26	54	49
Traits Observed: GL_Genomics													



LOT 3

FRANC’S ANGUS V39<sup>SV</sup>

VKP24V39

Date of Birth: 05/03/2024

Register: HBR

Sire: S S NIAGARA Z29<sup>SV</sup>  
Sire: **S S BRICKYARD<sup>PV</sup>**  
Dam: LUCY S S C109<sup>#</sup>

Sire: CHILTERN PARK MOE M6<sup>PV</sup>  
Dam: **KOORNANG PARK FRANCS T3<sup>#</sup>**  
Dam: KOORNANG PARK FRANCS R40<sup>#</sup>

**Notes:** Brickyard has been used over heifers with great results, Dam is by Chiltern Park Moe: Another calving ease specialist. Birth weight in the top 14%, slick skinned and sleek.

Mid August 2025 TransTasman Angus Cattle Evaluation													
	Calving Ease				Growth			Maternal				Fertility	
	Calving Ease Dir	Calving Ease Dtrs	Gestation Length	Birth Weight	200 Day Growth	400 Day Weight	600 Day Weight	Mat. Cow Weight	Mat. Body Condition	Mat. Cow Height	Milk	Days to Calving	Scrotal Size
EBV	+5.9	+4.6	-1.4	+2.0	+52	+95	+120	+85	+0.21	+8.0	+25	-5.5	+1.6
Acc	65%	55%	82%	81%	82%	80%	81%	78%	69%	75%	74%	41%	78%
Perc	22	38	90	14	47	45	51	76	65	55	7	32	70
Temp.	Carcase						Feed Efficiency	Structural			Selection Index		
	Docility	Carcase Weight	Eye Muscle Area	Rib Fat	Rump Fat	Retail Beef Yield	IMF	NFI-F	Claw Set	Foot Angle	Leg Angle	Angus Breeding Index	Angus Breeding Low Feed Cost Index
EBV	+10	+76	+4.6	+0.5	+1.2	-0.4	+2.4	+0.13	+0.58	+0.70	+1.04	\$221	\$367
Acc	75%	69%	69%	69%	69%	60%	73%	60%	69%	69%	67%	-	-
Perc	88	28	72	38	26	86	48	39	8	5	56	35	40
Traits Observed: GL,Genomics													

LOT 4

FRANC'S ANGUS V62<sup>SV</sup>

VKP24V62

Date of Birth: 01/04/2024

Register: APR

Sire: SYDGEN ENHANCE<sup>SV</sup>  
Sire: **RIGA SHELDON S26<sup>PV</sup>**  
Dam: RIGA DESIRE Q82<sup>PV</sup>

Sire: GLENOCH-JK MAKAHU M602<sup>SV</sup>  
Dam: **KOORNANG PARK FRANCS R62<sup>#</sup>**  
Dam: KOORNANG PARK FRANCS M85<sup>#</sup>

**Notes:** Younger bull with heaps of growth potential, Enhance on the paternal side with Makahu on the dam, so gives a bit of frame. All growth in the top 10%

Mid August 2025 TransTasman Angus Cattle Evaluation													
	Calving Ease				Growth			Maternal				Fertility	
	Calving Ease Dir	Calving Ease Dtrs	Gestation Length	Birth Weight	200 Day Growth	400 Day Weight	600 Day Weight	Mat. Cow Weight	Mat. Body Condition	Mat. Cow Height	Milk	Days to Calving	Scrotal Size
EBV	+0.5	-2.1	-2.1	+6.0	+64	+113	+161	+147	+0.30	+10.1	+23	-4.7	+1.9
Acc	63%	55%	81%	80%	81%	79%	79%	76%	70%	74%	72%	39%	77%
Perc	70	90	84	88	8	8	2	5	40	18	12	51	59
Temp.	Carcase						Feed Efficiency	Structural			Selection Index		
	Docility	Carcase Weight	Eye Muscle Area	Rib Fat	Rump Fat	Retail Beef Yield	IMF	NFI-F	Claw Set	Foot Angle	Leg Angle	Angus Breeding Index	Angus Breeding Low Feed Cost Index
EBV	+45	+89	+7.5	-4.4	-4.9	+1.1	+1.6	-0.83	+0.90	+1.12	+1.20	\$215	\$387
Acc	73%	66%	66%	66%	67%	57%	71%	59%	65%	66%	63%	-	-
Perc	2	7	37	99	98	13	69	1	64	83	92	41	24
Traits Observed: Genomics													

LOT 5

FRANC’S ANGUS V50<sup>SV</sup>

VKP24V50

Date of Birth: 20/03/2024

Register: APR

Sire: SYDGEN ENHANCE<sup>SV</sup>  
Sire: **RIGA SHELDON S26<sup>PV</sup>**  
Dam: RIGA DESIRE Q82<sup>PV</sup>

Sire: CHILTERN PARK MOE M6<sup>PV</sup>  
Dam: **KOORNANG PARK FRANCS S22<sup>#</sup>**  
Dam: KOORNANG PARK FRANCS Q5<sup>#</sup>

**Notes:** Typical of a Riga Sheldon progeny; long growth with plenty of stretch. Elite growth rates.

Mid August 2025 TransTasman Angus Cattle Evaluation													
	Calving Ease				Growth			Maternal				Fertility	
	Calving Ease Dir	Calving Ease Dtrs	Gestation Length	Birth Weight	200 Day Growth	400 Day Weight	600 Day Weight	Mat. Cow Weight	Mat. Body Condition	Mat. Cow Height	Milk	Days to Calving	Scrotal Size
EBV	+4.0	+4.2	-4.8	+4.5	+63	+104	+146	+135	+0.49	+10.5	+17	-6.3	+1.6
Acc	64%	57%	82%	80%	82%	80%	80%	77%	70%	74%	73%	42%	78%
Perc	39	42	45	63	10	21	9	11	7	12	52	18	70
Temp.	Carcase						Feed Efficiency	Structural			Selection Index		
	Docility	Carcase Weight	Eye Muscle Area	Rib Fat	Rump Fat	Retail Beef Yield	IMF	NFI-F	Claw Set	Foot Angle	Leg Angle	Angus Breeding Index	Angus Breeding Low Feed Cost Index
EBV	+50	+84	+3.6	-0.5	+0.1	-0.2	+3.3	-0.45	+0.84	+0.96	+0.82	\$240	\$422
Acc	74%	68%	68%	68%	69%	59%	73%	61%	65%	65%	63%	-	-
Perc	1	14	81	61	44	79	28	4	51	49	6	16	7
Traits Observed: Genomics													

LOT 6

FRANC’S ANGUS V61<sup>SV</sup>

VKP24V61

Date of Birth: 31/03/2024

Register: APR

Sire: TOPBOS LEADING EDGE L292<sup>PV</sup>  
Sire: **MERRIDALE Q-FLIP Q137<sup>PV</sup>**  
Dam: MERRIDALE DREAM L2<sup>SV</sup>

Sire: WITHERSWOOD ANDY F34<sup>SV</sup>  
Dam: **KOORNANG PARK M39<sup>#</sup>**  
Dam: KOORNANG PARK H29<sup>#</sup>

**Notes:** Typical bull by Merridale Q-Flip, has the phenotype and some good data with good growth. EMA in the top 15% & IMF in the top 24% - one to have a look at.

Mid August 2025 TransTasman Angus Cattle Evaluation													
	Calving Ease				Growth			Maternal				Fertility	
	Calving Ease Dir	Calving Ease Dtrs	Gestation Length	Birth Weight	200 Day Growth	400 Day Weight	600 Day Weight	Mat. Cow Weight	Mat. Body Condition	Mat. Cow Height	Milk	Days to Calving	Scrotal Size
EBV	-1.0	+4.2	-3.1	+6.3	+56	+94	+123	+132	+0.64	+9.6	+11	-4.3	+1.5
Acc	63%	54%	81%	80%	82%	80%	80%	77%	69%	73%	73%	41%	77%
Perc	79	42	72	91	31	47	44	13	1	25	89	60	73
Temp.	Carcase						Feed Efficiency	Structural			Selection Index		
	Docility	Carcase Weight	Eye Muscle Area	Rib Fat	Rump Fat	Retail Beef Yield	IMF	NFI-F	Claw Set	Foot Angle	Leg Angle	Angus Breeding Index	Angus Breeding Low Feed Cost Index
EBV	+20	+65	+10.0	+0.0	-2.9	+0.8	+3.5	+0.05	+0.66	+0.88	+1.04	\$202	\$361
Acc	74%	69%	68%	68%	69%	59%	73%	62%	63%	63%	60%	-	-
Perc	53	59	15	50	88	24	24	31	17	30	56	56	45
Traits Observed: Genomics													

LOT 7

FRANC'S ANGUS V42<sup>SV</sup>

VKP24V42

Date of Birth: 08/03/2024

Register: APR

Sire: SPRING COVE RENO 4021<sup>#</sup>  
Sire: **PINE VIEW MOGUL G241<sup>PV</sup>**  
Dam: BALDRIDGE ISABEL C773<sup>#</sup>

Sire: VARILEK GEDDES 7068<sup>PV</sup>  
Dam: **KOORNANG PARK FRANCS S21<sup>#</sup>**  
Dam: KOORNANG PARK FRANCS P4<sup>#</sup>

**Notes:** Here’s a slick, well-proportioned Mogul son by a Geddes female. once again good growth rates, in a good looking body.

Mid August 2025 TransTasman Angus Cattle Evaluation													
	Calving Ease				Growth			Maternal				Fertility	
	Calving Ease Dir	Calving Ease Dtrs	Gestation Length	Birth Weight	200 Day Growth	400 Day Weight	600 Day Weight	Mat. Cow Weight	Mat. Body Condition	Mat. Cow Height	Milk	Days to Calving	Scrotal Size
EBV	+1.9	+0.9	-1.9	+4.8	+59	+110	+135	+116	+0.24	+9.2	+25	-3.2	+2.0
Acc	66%	54%	83%	82%	83%	81%	82%	78%	64%	68%	73%	40%	79%
Perc	59	74	86	69	20	11	21	28	56	32	6	83	55
Temp.	Carcase						Feed Efficiency	Structural			Selection Index		
	Docility	Carcase Weight	Eye Muscle Area	Rib Fat	Rump Fat	Retail Beef Yield	IMF	NFI-F	Claw Set	Foot Angle	Leg Angle	Angus Breeding Index	Angus Breeding Low Feed Cost Index
EBV	+9	+75	+7.8	-0.2	+0.9	+1.0	-0.6	-0.35	+0.80	+0.86	+0.88	\$205	\$359
Acc	77%	69%	69%	69%	69%	60%	73%	61%	68%	68%	65%	-	-
Perc	91	32	33	54	31	16	99	6	42	25	13	53	47
Traits Observed: GL,Genomics													

LOT 8

FRANC’S ANGUS V30<sup>SV</sup>

VKP24V30

Date of Birth: 03/03/2024

Register: HBR

Sire: CASINO BOMBER N33<sup>#</sup>  
Sire: **LVVF TANKER 14<sup>PV</sup>**  
Dam: LVVF LEGEND 842<sup>#</sup>

Sire: GLENOCH-JK MAKAHU M602<sup>SV</sup>  
Dam: **KOORNANG PARK FRANCS R17<sup>#</sup>**  
Dam: KOORNANG PARK M22<sup>#</sup>

**Notes:** Tanker is a bull we used to add thickness and volume which he has delivered. This guy has that, plus calving ease and great growth data. These will be some of the first Tanker bulls available.

Mid August 2025 TransTasman Angus Cattle Evaluation													
	Calving Ease				Growth			Maternal				Fertility	
	Calving Ease Dir	Calving Ease Dtrs	Gestation Length	Birth Weight	200 Day Growth	400 Day Weight	600 Day Weight	Mat. Cow Weight	Mat. Body Condition	Mat. Cow Height	Milk	Days to Calving	Scrotal Size
EBV	+5.7	+6.7	-3.7	+2.3	+64	+116	+148	+132	+0.41	+9.5	+14	-2.9	+2.3
Acc	62%	51%	82%	81%	82%	80%	80%	77%	66%	70%	72%	37%	77%
Perc	24	17	63	18	7	5	8	12	16	26	71	87	44
Temp.	Carcase						Feed Efficiency	Structural			Selection Index		
	Docility	Carcase Weight	Eye Muscle Area	Rib Fat	Rump Fat	Retail Beef Yield	IMF	NFI-F	Claw Set	Foot Angle	Leg Angle	Angus Breeding Index	Angus Breeding Low Feed Cost Index
EBV	+18	+84	+6.5	-0.3	-3.2	+0.2	+3.1	-0.13	+0.50	+0.80	+0.98	\$226	\$407
Acc	75%	68%	67%	66%	67%	58%	72%	58%	68%	68%	61%	-	-
Perc	60	14	49	56	90	59	32	16	4	15	37	29	13
Traits Observed: GL,Genomics													

LOT 9

FRANC'S ANGUS V14<sup>SV</sup>

VKP24V14

Date of Birth: 28/02/2024

Register: APR

Sire: S S NIAGARA Z29<sup>SV</sup>  
Sire: **S S BRICKYARD<sup>PV</sup>**  
Dam: LUCY S S C109<sup>#</sup>

Sire: STERLING PACIFIC 904<sup>PV</sup>  
Dam: **KOORNANG PARK T9<sup>#</sup>**  
Dam: KOORNANG PARK FRANCS L2<sup>#</sup>

**Notes:** A bull with the rare combination of phenotype + data. Smooth coated with a thick back-third. Exceptional calving ease, growth and carcasse data, take a good look.

Mid August 2025 TransTasman Angus Cattle Evaluation													
	Calving Ease				Growth			Maternal				Fertility	
	Calving Ease Dir	Calving Ease Dtrs	Gestation Length	Birth Weight	200 Day Growth	400 Day Weight	600 Day Weight	Mat. Cow Weight	Mat. Body Condition	Mat. Cow Height	Milk	Days to Calving	Scrotal Size
EBV	+7.8	+6.6	-5.1	+1.2	+55	+105	+132	+101	+0.40	+5.1	+17	-4.1	+1.9
Acc	66%	55%	82%	81%	82%	80%	81%	78%	67%	74%	74%	40%	79%
Perc	10	18	40	7	33	19	25	51	18	93	54	65	59
	Temp.				Carcase				Feed Efficiency		Structural		
	Docility	Carcase Weight	Eye Muscle Area	Rib Fat	Rump Fat	Retail Beef Yield	IMF	NFI-F	Claw Set	Foot Angle	Leg Angle	Angus Breeding Index	Angus Breeding Low Feed Cost Index
EBV	+35	+83	+9.5	+2.0	+2.3	-0.1	+3.4	+0.23	+0.86	+0.88	+0.98	\$246	\$411
Acc	76%	69%	69%	68%	69%	60%	73%	59%	71%	71%	66%	-	-
Perc	8	15	18	13	14	75	26	50	55	30	37	12	11
Traits Observed: GL_Genomics													

LOT 10

FRANC'S ANGUS V37<sup>SV</sup>

VKP24V37

Date of Birth: 05/03/2024

Register: APR

Sire: SPRING COVE RENO 4021<sup>#</sup>  
Sire: **PINE VIEW MOGUL G241<sup>PV</sup>**  
Dam: BALDRIDGE ISABEL C773<sup>#</sup>

Sire: ESSLEMONT LOTTO L3<sup>PV</sup>  
Dam: **KOORNANG PARK FRANCS S16<sup>#</sup>**  
Dam: KOORNANG PARK H11<sup>#</sup>

**Notes:** Good, neat bull by Mogul. Neat shouldered and moderate size, great growth rates with plenty of fat cover.

Mid August 2025 TransTasman Angus Cattle Evaluation													
	Calving Ease				Growth			Maternal				Fertility	
	Calving Ease Dir	Calving Ease Dtrs	Gestation Length	Birth Weight	200 Day Growth	400 Day Weight	600 Day Weight	Mat. Cow Weight	Mat. Body Condition	Mat. Cow Height	Milk	Days to Calving	Scrotal Size
EBV	+2.8	+8.9	-3.9	+4.8	+61	+113	+142	+104	+0.49	+6.2	+26	-8.3	+0.0
Acc	66%	55%	83%	81%	83%	81%	81%	78%	69%	73%	73%	41%	79%
Perc	51	4	60	69	13	8	13	47	7	84	4	3	98
	Temp.				Carcase				Feed Efficiency		Structural		
	Docility	Carcase Weight	Eye Muscle Area	Rib Fat	Rump Fat	Retail Beef Yield	IMF	NFI-F	Claw Set	Foot Angle	Leg Angle	Angus Breeding Index	Angus Breeding Low Feed Cost Index
EBV	+31	+92	+9.4	+1.8	+1.6	+0.1	+4.2	+0.07	+1.02	+0.94	+1.06	\$310	\$487
Acc	77%	70%	70%	69%	70%	61%	74%	62%	70%	70%	67%	-	-
Perc	15	5	19	16	21	64	13	33	83	44	62	1	1
Traits Observed: GL_Genomics													

LOT 11

FRANC'S ANGUS V58<sup>SV</sup>

VKP24V58

Date of Birth: 27/03/2024

Register: APR

Sire: TOPBOS LEADING EDGE L292<sup>PV</sup>  
Sire: **MERRIDALE Q-FLIP Q137<sup>PV</sup>**  
Dam: MERRIDALE DREAM L2<sup>SV</sup>

Sire: MUSGRAVE 316 STUNNER<sup>PV</sup>  
Dam: **KOORNANG PARK FRANCS R19<sup>#</sup>**  
Dam: KOORNANG PARK K24<sup>#</sup>

**Notes:** Merridale Q-Flip out of a Musgrave Stunner cow, gun-barrel-straight back line, free-moving with solid data.

Mid August 2025 TransTasman Angus Cattle Evaluation													
	Calving Ease				Growth			Maternal				Fertility	
	Calving Ease Dir	Calving Ease Dtrs	Gestation Length	Birth Weight	200 Day Growth	400 Day Weight	600 Day Weight	Mat. Cow Weight	Mat. Body Condition	Mat. Cow Height	Milk	Days to Calving	Scrotal Size
EBV	+1.5	-0.3	-1.9	+5.1	+54	+97	+121	+106	+0.36	+5.8	+18	-5.6	+0.0
Acc	64%	55%	81%	80%	82%	80%	80%	77%	69%	73%	73%	42%	78%
Perc	62	82	86	75	40	40	49	44	26	88	40	30	98
	Temp.				Carcase				Feed Efficiency		Structural		
	Docility	Carcase Weight	Eye Muscle Area	Rib Fat	Rump Fat	Retail Beef Yield	IMF	NFI-F	Claw Set	Foot Angle	Leg Angle	Angus Breeding Index	Angus Breeding Low Feed Cost Index
EBV	+23	+73	+6.8	-0.2	-0.3	+0.8	+1.0	+0.02	+0.84	+1.06	+0.86	\$214	\$361
Acc	75%	69%	69%	68%	70%	60%	73%	62%	65%	65%	61%	-	-
Perc	38	37	45	54	51	24	82	28	51	73	10	42	46
Traits Observed: Genomics													

LOT 12

FRANC'S ANGUS V6<sup>SV</sup>

VKP24V6

Date of Birth: 26/02/2024

Register: APR

Sire: BALDRIDGE COLONEL C251<sup>#</sup>  
Sire: **MONTANA ELEVATION 7108<sup>PV</sup>**  
Dam: MONTANA BLACKCAP C038<sup>#</sup>

Sire: WITHERSWOOD INOVATION M0001<sup>PV</sup>  
Dam: **KOORNANG PARK FRANCS Q18<sup>#</sup>**  
Dam: KOORNANG PARK M24<sup>#</sup>

**Notes:** A Montana Elevation bull with heaps of bone + volume. Great growth EBVs, a bull which will add kilos.

Mid August 2025 TransTasman Angus Cattle Evaluation													
	Calving Ease				Growth			Maternal				Fertility	
	Calving Ease Dir	Calving Ease Dtrs	Gestation Length	Birth Weight	200 Day Growth	400 Day Weight	600 Day Weight	Mat. Cow Weight	Mat. Body Condition	Mat. Cow Height	Milk	Days to Calving	Scrotal Size
EBV	-1.3	+5.3	-5.6	+6.3	+68	+117	+161	+137	+0.24	+9.7	+17	-1.9	+2.7
Acc	65%	55%	82%	81%	83%	81%	81%	78%	69%	75%	74%	39%	78%
Perc	80	30	33	91	3	5	2	9	56	23	49	96	30
	Temp.				Carcase				Feed Efficiency		Structural		
	Docility	Carcase Weight	Eye Muscle Area	Rib Fat	Rump Fat	Retail Beef Yield	IMF	NFI-F	Claw Set	Foot Angle	Leg Angle	Angus Breeding Index	Angus Breeding Low Feed Cost Index
EBV	+38	+91	+4.9	-0.7	-2.1	+0.7	+0.0	+0.10	+0.84	+1.10	+1.02	\$196	\$357
Acc	75%	70%	69%	69%	70%	60%	74%	60%	65%	65%	61%	-	-
Perc	6	6	68	66	80	29	95	36	51	80	49	63	48
Traits Observed: Genomics													

LOT 13

FRANC'S ANGUS V3<sup>SV</sup>

VKP24V3

Date of Birth: 25/02/2024

Register: APR

Sire: RENNYLEA L519<sup>PV</sup>  
Sire: **DUNOON RECHARGE R102<sup>PV</sup>**  
Dam: DUNOON ELINE M459<sup>SV</sup>

Sire: WITHERSWOOD ANDY F34<sup>SV</sup>  
Dam: **KOORNANG PARK K20<sup>#</sup>**  
Dam: KOORNANG PARK Z1<sup>#</sup>

**Notes:** Here's a quiet, growthy bull by Dunoon Recharge. Elite calving ease figures, still with plenty of growth. Perfect for heifers.

Mid August 2025 TransTasman Angus Cattle Evaluation													
	Calving Ease				Growth			Maternal				Fertility	
	Calving Ease Dir	Calving Ease Dtrs	Gestation Length	Birth Weight	200 Day Growth	400 Day Weight	600 Day Weight	Mat. Cow Weight	Mat. Body Condition	Mat. Cow Height	Milk	Days to Calving	Scrotal Size
EBV	+11.2	+8.3	-9.2	+2.2	+46	+94	+125	+128	+0.21	+8.6	+17	-2.9	+1.1
Acc	68%	57%	83%	82%	83%	81%	82%	79%	69%	73%	74%	44%	80%
Perc	1	7	4	16	77	49	40	16	65	42	55	87	84
	Temp.				Carcase				Feed Efficiency		Structural		
	Docility	Carcase Weight	Eye Muscle Area	Rib Fat	Rump Fat	Retail Beef Yield	IMF	NFI-F	Claw Set	Foot Angle	Leg Angle	Angus Breeding Index	Angus Breeding Low Feed Cost Index
EBV	+26	+68	+9.3	-0.6	-1.0	+0.9	+2.6	+0.07	+0.80	+0.92	+0.98	\$185	\$356
Acc	77%	70%	71%	70%	71%	61%	75%	63%	67%	67%	66%	-	-
Perc	28	52	20	63	63	20	44	33	42	39	37	73	49
Traits Observed: GL_Genomics													

LOT 14

FRANC'S ANGUS V28<sup>SV</sup>

VKP24V28

Date of Birth: 02/03/2024

Register: APR

Sire: HAYNES OUTRIGHT 452<sup>#</sup>  
Sire: **HART OUTLIER 7033<sup>PV</sup>**  
Dam: HART LIBERTY BELLE 5315<sup>#</sup>

Sire: COONAMBLE NIC NAT N439<sup>PV</sup>  
Dam: **KOORNANG PARK T4<sup>#</sup>**  
Dam: KOORNANG PARK FRANCS R1<sup>#</sup>

**Notes:** This bull is extremely quiet and docile, Hart Outlier is a bull we've used often, birth weight in top 4% with great fat in both rump and rib.

Mid August 2025 TransTasman Angus Cattle Evaluation													
	Calving Ease				Growth			Maternal				Fertility	
	Calving Ease Dir	Calving Ease Dtrs	Gestation Length	Birth Weight	200 Day Growth	400 Day Weight	600 Day Weight	Mat. Cow Weight	Mat. Body Condition	Mat. Cow Height	Milk	Days to Calving	Scrotal Size
EBV	+6.8	+3.9	-3.1	+0.7	+41	+85	+98	+75	+0.21	+6.2	+20	-4.4	+1.8
Acc	62%	52%	82%	81%	82%	80%	80%	77%	65%	70%	73%	37%	77%
Perc	16	45	72	4	90	75	90	87	65	84	28	58	62
	Temp.				Carcase				Feed Efficiency		Structural		
	Docility	Carcase Weight	Eye Muscle Area	Rib Fat	Rump Fat	Retail Beef Yield	IMF	NFI-F	Claw Set	Foot Angle	Leg Angle	Angus Breeding Index	Angus Breeding Low Feed Cost Index
EBV	+29	+62	+1.8	+3.1	+2.1	-0.2	+1.7	+0.60	+0.84	+0.68	+1.08	\$175	\$307
Acc	73%	68%	68%	67%	68%	58%	72%	59%	63%	63%	56%	-	-
Perc	21	68	93	5	16	79	66	85	51	4	68	82	83
Traits Observed: GL_Genomics													



LOT 15

FRANC'S ANGUS V27<sup>SV</sup>

VKP24V27

LOT 18

FRANC'S ANGUS V22<sup>SV</sup>

VKP24V22

Date of Birth: 02/03/2024

Register: APR

Sire: BALDRIDGE COMMAND C036<sup>PV</sup>

Sire: MANDAYEN REEBOK R442<sup>PV</sup>

Dam: MANDAYEN PRUE P451<sup>PV</sup>

Sire: VARILEK GEDDES 7068<sup>PV</sup>

Dam: KOORNANG PARK T6<sup>#</sup>

Dam: KOORNANG PARK FRANCS P12<sup>#</sup>

Notes: Thick and meaty, typical of a Reebok bull. Lower birth weight and if you're looking to add fat and EMA, he's your guy.

Mid August 2025 TransTasman Angus Cattle Evaluation													
	Calving Ease				Growth			Maternal				Fertility	
	Calving Ease Dir	Calving Ease Dtrs	Gestation Length	Birth Weight	200 Day Growth	400 Day Weight	600 Day Weight	Mat. Cow Weight	Mat. Body Condition	Mat. Cow Height	Milk	Days to Calving	Scrotal Size
EBV	+5.5	+5.5	-4.1	+3.4	+42	+83	+106	+66	+0.19	+4.2	+23	-5.2	+2.3
Acc	66%	55%	83%	81%	82%	81%	81%	77%	67%	71%	73%	41%	78%
Perc	26	28	56	38	88	78	79	93	70	97	14	39	44

	Temp.	Carcase					Feed Efficiency	Structural			Selection Index		
	Docility	Carcase Weight	Eye Muscle Area	Rib Fat	Rump Fat	Retail Beef Yield	IMF	NFI-F	Claw Set	Foot Angle	Leg Angle	Angus Breeding Index	Angus Breeding Low Feed Cost Index
EBV	+14	+50	+14.4	+2.8	+3.7	+1.2	+0.9	+0.74	+0.68	+1.02	+1.02	\$233	\$365
Acc	76%	69%	69%	68%	69%	60%	73%	60%	67%	68%	65%	-	-
Perc	75	92	2	7	5	10	84	92	20	64	49	22	42

Traits Observed: GL\_Genomics

Date of Birth: 01/03/2024

Register: HBR

Sire: CASINO BOMBER N33<sup>#</sup>

Sire: LVVF TANKER 14<sup>PV</sup>

Dam: LVVF LEGEND 842<sup>#</sup>

Sire: BRUNS BLASTER<sup>PV</sup>

Dam: ROSSANDER PRIMROSE R160<sup>#</sup>

Dam: ROSSANDER PRIMROSE RIGHT TIME K344<sup>#</sup>

Notes: Another impressive Tanker, moderate calving ease then growth rates that explode off the page. In a bull that is free-moving and pleasing to look at.

Mid August 2025 TransTasman Angus Cattle Evaluation													
	Calving Ease				Growth			Maternal				Fertility	
	Calving Ease Dir	Calving Ease Dtrs	Gestation Length	Birth Weight	200 Day Growth	400 Day Weight	600 Day Weight	Mat. Cow Weight	Mat. Body Condition	Mat. Cow Height	Milk	Days to Calving	Scrotal Size
EBV	+2.5	+3.0	-6.8	+3.8	+72	+123	+163	+146	+0.31	+8.0	+20	-3.4	+2.7
Acc	62%	51%	82%	81%	82%	79%	79%	76%	65%	70%	72%	36%	76%
Perc	53	55	18	47	1	2	2	5	37	54	28	79	30

	Temp.	Carcase					Feed Efficiency	Structural			Selection Index		
	Docility	Carcase Weight	Eye Muscle Area	Rib Fat	Rump Fat	Retail Beef Yield	IMF	NFI-F	Claw Set	Foot Angle	Leg Angle	Angus Breeding Index	Angus Breeding Low Feed Cost Index
EBV	+23	+104	+5.8	-0.8	-2.8	-0.1	+1.9	+0.11	+0.86	+0.88	+1.00	\$223	\$406
Acc	74%	68%	67%	66%	67%	57%	71%	57%	69%	69%	61%	-	-
Perc	40	1	57	68	87	75	61	37	55	30	43	32	13

Traits Observed: GL\_Genomics

LOT 16

FRANC'S ANGUS V29<sup>SV</sup>

VKP24V29

LOT 19

FRANC'S ANGUS V25<sup>SV</sup>

VKP24V25

Date of Birth: 03/03/2024

Register: APR

Sire: BALDRIDGE COMMAND C036<sup>PV</sup>

Sire: MANDAYEN REEBOK R442<sup>PV</sup>

Dam: MANDAYEN PRUE P451<sup>PV</sup>

Sire: WITHERSWOOD BOS K0179<sup>SV</sup>

Dam: KOORNANG PARK Q51<sup>#</sup>

Dam: COOLANA J606<sup>#</sup>

Notes: Typical Reebok, moderate size with thickness in all the right areas. Great calving ease, heifer option with exceptional rump fat.

Mid August 2025 TransTasman Angus Cattle Evaluation													
	Calving Ease				Growth			Maternal				Fertility	
	Calving Ease Dir	Calving Ease Dtrs	Gestation Length	Birth Weight	200 Day Growth	400 Day Weight	600 Day Weight	Mat. Cow Weight	Mat. Body Condition	Mat. Cow Height	Milk	Days to Calving	Scrotal Size
EBV	+7.9	+5.6	-2.6	+2.0	+50	+100	+123	+121	+0.52	+3.9	+17	-6.5	+2.2
Acc	65%	55%	82%	81%	82%	81%	81%	77%	67%	70%	73%	40%	78%
Perc	9	27	78	14	59	31	44	23	5	98	55	15	47

	Temp.	Carcase					Feed Efficiency	Structural			Selection Index		
	Docility	Carcase Weight	Eye Muscle Area	Rib Fat	Rump Fat	Retail Beef Yield	IMF	NFI-F	Claw Set	Foot Angle	Leg Angle	Angus Breeding Index	Angus Breeding Low Feed Cost Index
EBV	+28	+67	+9.1	-0.7	+2.7	+0.5	+2.1	+0.50	+0.86	+0.96	+1.06	\$231	\$414
Acc	76%	68%	68%	68%	69%	59%	73%	60%	65%	66%	63%	-	-
Perc	22	55	21	66	11	41	56	78	55	49	62	24	10

Traits Observed: GL\_Genomics

Date of Birth: 02/03/2024

Register: APR

Sire: SPRING COVE RENO 4021<sup>#</sup>

Sire: PINE VIEW MOGUL G241<sup>PV</sup>

Dam: BALDRIDGE ISABEL C773<sup>#</sup>

Sire: ESSLEMONT LOTTO L3<sup>PV</sup>

Dam: KOORNANG PARK FRANCS S32<sup>#</sup>

Dam: KOORNANG PARK FRANCS N14<sup>#</sup>

Notes: A long, straight Mogul son with the phenotype and data to suggest he will be easy calving + EMA in the top 8%.

Mid August 2025 TransTasman Angus Cattle Evaluation													
	Calving Ease				Growth			Maternal				Fertility	
	Calving Ease Dir	Calving Ease Dtrs	Gestation Length	Birth Weight	200 Day Growth	400 Day Weight	600 Day Weight	Mat. Cow Weight	Mat. Body Condition	Mat. Cow Height	Milk	Days to Calving	Scrotal Size
EBV	+6.2	+8.8	-6.0	+3.0	+52	+101	+129	+99	+0.38	+5.0	+23	-6.6	+1.5
Acc	66%	55%	83%	82%	83%	81%	82%	78%	68%	72%	73%	42%	79%
Perc	20	5	27	29	46	30	31	54	22	93	14	14	73

	Temp.	Carcase					Feed Efficiency	Structural			Selection Index		
	Docility	Carcase Weight	Eye Muscle Area	Rib Fat	Rump Fat	Retail Beef Yield	IMF	NFI-F	Claw Set	Foot Angle	Leg Angle	Angus Breeding Index	Angus Breeding Low Feed Cost Index
EBV	+21	+70	+11.5	-3.2	-1.5	+1.3	+3.0	-0.21	+0.44	+0.78	+0.98	\$271	\$439
Acc	77%	70%	70%	70%	71%	62%	74%	63%	69%	69%	67%	-	-
Perc	49	46	8	97	71	8	34	12	2	12	37	3	3

Traits Observed: Genomics

LOT 17

FRANC'S ANGUS V48<sup>SV</sup>

VKP24V48

LOT 20

FRANC'S ANGUS V63<sup>SV</sup>

VKP24V63

Date of Birth: 18/03/2024

Register: APR

Sire: SYDGEN ENHANCE<sup>SV</sup>

Sire: RIGA SHELDON S26<sup>PV</sup>

Dam: RIGA DESIRE Q82<sup>PV</sup>

Sire: MERRIDALE Q-FLIP Q137<sup>PV</sup>

Dam: KOORNANG PARK T35<sup>#</sup>

Dam: KOORNANG PARK H11<sup>#</sup>

Notes: Growthy bull with a neat shoulder and solid back end. This is a bull with plenty of substance and growth.

Mid August 2025 TransTasman Angus Cattle Evaluation													
	Calving Ease				Growth			Maternal				Fertility	
	Calving Ease Dir	Calving Ease Dtrs	Gestation Length	Birth Weight	200 Day Growth	400 Day Weight	600 Day Weight	Mat. Cow Weight	Mat. Body Condition	Mat. Cow Height	Milk	Days to Calving	Scrotal Size
EBV	-2.1	+6.9	-6.3	+5.4	+58	+93	+133	+118	+0.17	+9.2	+16	-4.6	+0.5
Acc	63%	55%	81%	80%	81%	79%	80%	77%	68%	72%	72%	40%	77%
Perc	84	15	23	80	22	51	24	26	75	31	56	53	94

	Temp.	Carcase					Feed Efficiency	Structural			Selection Index		
	Docility	Carcase Weight	Eye Muscle Area	Rib Fat	Rump Fat	Retail Beef Yield	IMF	NFI-F	Claw Set	Foot Angle	Leg Angle	Angus Breeding Index	Angus Breeding Low Feed Cost Index
EBV	+29	+77	+1.0	-3.3	-5.0	+0.3	+0.6	-0.73	+0.86	+0.84	+0.88	\$161	\$303
Acc	74%	67%	67%	67%	68%	58%	72%	60%	64%	64%	60%	-	-
Perc	20	28	96	97	98	53	89	1	55	22	13	89	84

Traits Observed: Genomics

Date of Birth: 01/04/2024

Register: APR

Sire: SYDGEN ENHANCE<sup>SV</sup>

Sire: RIGA SHELDON S26<sup>PV</sup>

Dam: RIGA DESIRE Q82<sup>PV</sup>

Sire: VARILEK GEDDES 7068<sup>PV</sup>

Dam: KOORNANG PARK FRANCS S33<sup>#</sup>

Dam: KOORNANG PARK M39<sup>#</sup>

Notes: Young bull with plenty of growth, stands tall and proud with growth figures all in the top 5%.

Mid August 2025 TransTasman Angus Cattle Evaluation													
	Calving Ease				Growth			Maternal				Fertility	
	Calving Ease Dir	Calving Ease Dtrs	Gestation Length	Birth Weight	200 Day Growth	400 Day Weight	600 Day Weight	Mat. Cow Weight	Mat. Body Condition	Mat. Cow Height	Milk	Days to Calving	Scrotal Size
EBV	-1.1	+3.9	-1.2	+5.5	+69	+117	+154	+142	+0.22	+10.1	+21	-5.3	+4.1
Acc	65%	56%	82%	80%	82%	80%	80%	77%	68%	72%	73%	41%	78%
Perc	79	45	91	82	3	5	4	7	62	17	23	36	5

	Temp.	Carcase					Feed Efficiency	Structural			Selection Index		
	Docility	Carcase Weight	Eye Muscle Area	Rib Fat	Rump Fat	Retail Beef Yield	IMF	NFI-F	Claw Set	Foot Angle	Leg Angle	Angus Breeding Index	Angus Breeding Low Feed Cost Index
EBV	+30	+84	+6.3	-4.4	-4.6	+0.9	+2.0	-0.78	+0.72	+1.04	+1.08	\$231	\$409
Acc	74%	68%	68%	67%	69%	59%	72%	60%	65%	65%	61%	-	-
Perc	17	14	51	99	97	20	59	1	26	68	68	24	12

Traits Observed: Genomics



LOT 21

FRANC'S ANGUS V9<sup>SV</sup>

VKP24V9

Date of Birth: 27/02/2024

Register: HBR

Sire: RENNYLEA L508<sup>PV</sup>  
Sire: **DUNOON PRIME MINISTER P758<sup>PV</sup>**  
Dam: DUNOON JAPARA M1008<sup>#</sup>

Sire: WITHERSWOOD BOS K0179<sup>SV</sup>  
Dam: **KOORNANG PARK FRANCS N33<sup>#</sup>**  
Dam: KOORNANG PARK C76<sup>#</sup>

**Notes:** This bull is by the highly used Dunoon Prime Minister, stands up tall and will give a bit more stretch and frame. Positive EMA and Fat.

Mid August 2025 TransTasman Angus Cattle Evaluation													
	Calving Ease				Growth			Maternal				Fertility	
	Calving Ease Dir	Calving Ease Dtrs	Gestation Length	Birth Weight	200 Day Growth	400 Day Weight	600 Day Weight	Mat. Cow Weight	Mat. Body Condition	Mat. Cow Height	Milk	Days to Calving	Scrotal Size
EBV	+1.3	-0.1	-7.0	+4.9	+45	+84	+114	+116	+0.42	+8.9	+21	-4.4	+3.1
Acc	64%	57%	82%	81%	82%	80%	81%	78%	71%	76%	74%	43%	79%
Perc	64	81	16	71	81	76	64	29	15	37	21	58	19
Temp.	Carcase						Feed Efficiency	Structural			Selection Index		
	Docility	Carcase Weight	Eye Muscle Area	Rib Fat	Rump Fat	Retail Beef Yield	IMF	NFI-F	Claw Set	Foot Angle	Leg Angle	Angus Breeding Index	Angus Breeding Low Feed Cost Index
EBV	+25	+62	+7.1	+0.3	+1.0	+0.8	+1.3	+0.12	+0.60	+0.86	+1.14	\$164	\$310
Acc	76%	70%	69%	69%	70%	61%	73%	61%	68%	68%	68%	-	-
Perc	33	69	41	43	29	24	76	38	10	25	82	88	81
Traits Observed: GL,Genomics													

LOT 24

FRANC'S ANGUS V23<sup>SV</sup>

VKP24V23

Date of Birth: 02/03/2024

Register: HBR

Sire: BALDRIDGE COLONEL C251<sup>#</sup>  
Sire: **MONTANA ELEVATION 7108<sup>PV</sup>**  
Dam: MONTANA BLACKCAP C038<sup>#</sup>

Sire: COOLANA DEBONAIR G185<sup>SV</sup>  
Dam: **COOLANA CHAMPAGNE K098<sup>#</sup>**  
Dam: COOLANA H035<sup>#</sup>

**Notes:** Long, neat shouldered bull with heaps of growth potential, growth rates in the top 10%, EMA top 20%, Montana Elevation out of a Coolana Champagne K098, her 10th calf.

Mid August 2025 TransTasman Angus Cattle Evaluation													
	Calving Ease				Growth			Maternal				Fertility	
	Calving Ease Dir	Calving Ease Dtrs	Gestation Length	Birth Weight	200 Day Growth	400 Day Weight	600 Day Weight	Mat. Cow Weight	Mat. Body Condition	Mat. Cow Height	Milk	Days to Calving	Scrotal Size
EBV	-9.3	+1.1	-2.2	+7.0	+63	+116	+145	+129	+0.29	+10.0	+16	-3.1	+3.6
Acc	67%	57%	83%	82%	83%	82%	82%	79%	70%	75%	76%	42%	80%
Perc	98	73	83	96	9	5	9	15	43	19	59	84	10
Temp.	Carcase						Feed Efficiency	Structural			Selection Index		
	Docility	Carcase Weight	Eye Muscle Area	Rib Fat	Rump Fat	Retail Beef Yield	IMF	NFI-F	Claw Set	Foot Angle	Leg Angle	Angus Breeding Index	Angus Breeding Low Feed Cost Index
EBV	+34	+82	+9.3	-3.4	-4.2	+1.4	+1.5	+0.24	+0.82	+0.58	+0.92	\$197	\$338
Acc	77%	71%	71%	70%	71%	62%	75%	62%	65%	65%	61%	-	-
Perc	10	17	20	97	96	6	71	51	47	1	21	62	64
Traits Observed: GL,Genomics													

LOT 22

FRANC'S ANGUS V11<sup>SV</sup>

VKP24V11

Date of Birth: 27/02/2024

Register: APR

Sire: MATAURI REALITY 839<sup>#</sup>  
Sire: **GLENOCH-JK MAKAHU M602<sup>SV</sup>**  
Dam: GLENOCH-JK ANN K615<sup>SV</sup>

Sire: CONNEALY CAPITALIST 028<sup>#</sup>  
Dam: **KOORNANG PARK FRANCS Q11<sup>#</sup>**  
Dam: KOORNANG PARK FRANCS N15<sup>#</sup>

**Notes:** Typical of JK Makahu, plenty of growth potential with elite growth data. Should definitely add kilos

Mid August 2025 TransTasman Angus Cattle Evaluation													
	Calving Ease				Growth			Maternal				Fertility	
	Calving Ease Dir	Calving Ease Dtrs	Gestation Length	Birth Weight	200 Day Growth	400 Day Weight	600 Day Weight	Mat. Cow Weight	Mat. Body Condition	Mat. Cow Height	Milk	Days to Calving	Scrotal Size
EBV	-0.8	+4.2	-8.3	+5.0	+63	+107	+147	+126	+0.13	+8.4	+23	-6.1	+4.6
Acc	67%	60%	83%	82%	83%	81%	82%	79%	74%	79%	76%	46%	80%
Perc	78	42	7	73	9	15	8	18	82	46	15	21	3
Temp.	Carcase						Feed Efficiency	Structural			Selection Index		
	Docility	Carcase Weight	Eye Muscle Area	Rib Fat	Rump Fat	Retail Beef Yield	IMF	NFI-F	Claw Set	Foot Angle	Leg Angle	Angus Breeding Index	Angus Breeding Low Feed Cost Index
EBV	+7	+89	+5.8	-1.4	-1.4	-0.4	+2.3	+0.39	+0.78	+1.00	+1.02	\$215	\$383
Acc	77%	71%	70%	70%	71%	63%	74%	62%	69%	69%	67%	-	-
Perc	93	8	57	79	70	86	51	68	38	59	49	42	27
Traits Observed: GL,Genomics													

LOT 25

FRANC'S ANGUS V69<sup>SV</sup>

VKP24V69

Date of Birth: 23/04/2024

Register: HBR

Sire: TOPBOS LEADING EDGE L292<sup>PV</sup>  
Sire: **MERRIDALE Q-FLIP Q137<sup>PV</sup>**  
Dam: MERRIDALE DREAM L2<sup>SV</sup>

Sire: KOOJAN HILLS REALITY K46<sup>SV</sup>  
Dam: **KOORNANG PARK FRANCS N29<sup>#</sup>**  
Dam: COOLANA ANNABELL K035<sup>#</sup>

**Notes:** The youngest bull on offer but typical Q-Flip, his progeny are always so predictable, he just never throws a bad one.

Mid August 2025 TransTasman Angus Cattle Evaluation													
	Calving Ease				Growth			Maternal				Fertility	
	Calving Ease Dir	Calving Ease Dtrs	Gestation Length	Birth Weight	200 Day Growth	400 Day Weight	600 Day Weight	Mat. Cow Weight	Mat. Body Condition	Mat. Cow Height	Milk	Days to Calving	Scrotal Size
EBV	+3.3	-0.6	-4.8	+3.7	+49	+89	+117	+122	+0.40	+8.5	+18	-6.9	+3.6
Acc	64%	55%	82%	81%	82%	80%	81%	73%	70%	74%	74%	42%	78%
Perc	46	84	45	45	65	62	58	21	18	45	45	42	10
Temp.	Carcase						Feed Efficiency	Structural			Selection Index		
	Docility	Carcase Weight	Eye Muscle Area	Rib Fat	Rump Fat	Retail Beef Yield	IMF	NFI-F	Claw Set	Foot Angle	Leg Angle	Angus Breeding Index	Angus Breeding Low Feed Cost Index
EBV	+19	+54	+6.4	-0.4	-2.5	+1.1	+1.1	+0.11	+0.92	+0.72	+0.94	\$184	\$346
Acc	75%	69%	69%	69%	70%	60%	74%	62%	64%	64%	61%	-	-
Perc	58	86	50	59	84	13	80	37	67	6	26	75	58
Traits Observed: Genomics													

LOT 23

FRANC'S ANGUS V46<sup>SV</sup>

VKP24V46

Date of Birth: 15/03/2024

Register: APR

Sire: SYDGEN ENHANCE<sup>SV</sup>  
Sire: **RIGA SHELDON S26<sup>PV</sup>**  
Dam: RIGA DESIRE Q82<sup>PV</sup>

Sire: VARILEK GEDDES 7068<sup>PV</sup>  
Dam: **KOORNANG PARK T17<sup>#</sup>**  
Dam: KOORNANG PARK FRANCS P2<sup>#</sup>

**Notes:** Riga Sheldon bull out of a Geddes heifer, extremely good calving ease with elite growth rates and EMA in top 11%. Will add profitability.

Mid August 2025 TransTasman Angus Cattle Evaluation													
	Calving Ease				Growth			Maternal				Fertility	
	Calving Ease Dir	Calving Ease Dtrs	Gestation Length	Birth Weight	200 Day Growth	400 Day Weight	600 Day Weight	Mat. Cow Weight	Mat. Body Condition	Mat. Cow Height	Milk	Days to Calving	Scrotal Size
EBV	+6.9	+5.6	-7.0	+3.1	+68	+115	+152	+142	+0.31	+9.6	+16	-4.0	+4.1
Acc	64%	56%	82%	80%	82%	80%	80%	77%	69%	72%	73%	41%	78%
Perc	15	27	16	31	3	6	5	7	37	24	58	67	5
Temp.	Carcase						Feed Efficiency	Structural			Selection Index		
	Docility	Carcase Weight	Eye Muscle Area	Rib Fat	Rump Fat	Retail Beef Yield	IMF	NFI-F	Claw Set	Foot Angle	Leg Angle	Angus Breeding Index	Angus Breeding Low Feed Cost Index
EBV	+36	+83	+10.7	-3.0	-4.6	+1.4	+0.7	-0.71	+1.04	+1.08	+0.96	\$230	\$420
Acc	75%	68%	68%	67%	69%	58%	72%	60%	64%	64%	61%	-	-
Perc	7	15	11	96	97	6	87	1	86	76	31	24	8
Traits Observed: Genomics													





## Nutrien Ballarat

## For All Your Livestock Marketing

## Supporters of Francs Angus

## We're Local People With More Than 150 Years Of Experience In Australian Agriculture



Servicing Central Victoria & Surrounds Specialising In

- Prime Cattle Sales
- Prime Lamb Sales
- Over The Hook & Forward Contracts
- Clearing Sales
- Real Estate
- Auctions Plus
- Merchandise & Animal Health Requirements

Xavier Shanahan 0418 971 940  
Paul Constable 0407 348 992  
John Wagstaff 0428 529 579  
Darcy Erhardt 0437 358 666  
Ned Balharrie 0437 738 499  
John Mckinnon 0417 314 921  
Sadye Madden 0499 553 833  
Liz Dridan 0408 930 043  
Tony Shanahan 0408 519 144



## Nutrien Ballarat

 (03) 5334 1030  
 137 Gillies Street South, Ballarat

## Selling Agent

John Waqstaff  
📞 0428 529 579

**www.NutrienAgSolutions.com.au**

**Nutrien**  
Livestock





**THANK YOU FOR ATTENDING**

See you next time!

**FRANCS ANGUS**

Francs Angus, 2957 Carngham-Streatham Rd, Beaufort VIC 3373

Phone: 0407 406 509 • Website: [www.francsangus.com.au](http://www.francsangus.com.au)