



# Exciting Changes

## GREATER COLLABORATION, STEWARDSHIP, AND SHARED MISSION

My Dear Friends,

*I want to take a moment to thank you all for your dedication and support during this time of great transition within our Parish Family.*

*At this point in our Partners in the Gospel journey, I would like to share some important updates regarding changes in our Parish Family operations.*

*At the heart of these changes is our mission: to be a place of encounter with Christ, and a home for evangelization, welcome, and discipleship. We believe that every person's fulfillment is found in being in relationship with Christ, and our parishes must serve as the front porches of encounter for our neighbors.*

*To help us realign ourselves with this mission, the Partners in the Gospel initiative is a tool used by the Archdiocese. Currently, many of our parishes, including our own, have been structured primarily to maintain rather than to evangelize. Too often, our time and resources are spent simply trying to keep things afloat. Also, within our Parish Family, each of our parishes has needs that would typically require a full staff and a dedicated Pastor. However, we just have one Pastor for the three parishes and haven't had a full complement of staff for quite some time.*

*To fully live out our mission (see Matthew 28), and to fully grow into Christ's will and desire, we need to restructure in creative ways. We need to bring together and streamline our operations across St. Alphonsus, St. Benedict, and St. John the Evangelist. This includes unifying administrative and faith formation teams, creating shared office hubs, and streamlining communications.*

*While this transition is happening sooner than anticipated, it's an urgent and necessary step toward our shared mission. We are going through this process so that we may become more fully who the Lord is calling us to be. This is a process of conversion, change, and newness, and expectedly, it may come with grief, fear, and anger. That is normal. It is hard to go into a time and place that we haven't experienced before, while waiting for the Lord to fulfill his promises.*

*These changes are evolving, and we will continue to listen to you, assess our gaps, and make needed adjustments along the way. We ask for your patience, understanding, and most especially, your prayers as we move forward in faith together.*

*On another note, although the Partners in the Gospel process encouraged us to focus on our parishes before turning to schools, our principals have requested a strong interest in beginning the collaboration discussions now. A task force composed of school and finance representatives will begin these discussions in coordination with the parish listening sessions.*

*Lastly, I would like to give Fr. Nkolombidzo, our Parochial Vicar, the opportunity to become more familiar with each parish community, while also helping us strengthen unity and coordination across our Parish Family. Starting the week of September 20, Fr. Nkolombidzo and I will begin a 10-week rotation of celebrating Masses in our parishes. For the first 10 weeks, I will celebrate all Masses at St. John, while Fr. Nkolombidzo will celebrate all Masses at St. Alphonsus and St. Benedict. After this period, we will switch locations.*

*Thank you, and may God bless you and your families.*

Blessings,  
Fr. Colin Parrish, Pastor



# 1 RESTRUCTURING STAFF ROLES AND RESPONSIBILITIES TO SUPPORT OUR NEW PARISH FAMILY MODEL.

- What does it mean for the staff?
  - All the staff of the three parishes will be working for the Parish Family, NOT for their specific parish. *For example, Teresa Gillett, the Development Director of St. John, will now be the Development Director for the entire Parish Family; and Claire Shea, the Pastoral Assistant for Faith Formation of St. Alphonsus, will be expanding her role as the Evangelization Coordinator for Parish Family 14.*
  - Some staff members will be assigned different roles.
  - Staff will begin using [parishfamily14.org](mailto:parishfamily14.org) email addresses (October 1, 2025), while existing addresses will remain active and automatically forward messages.
- How will parishioners of the three parishes be supported during the transition?
  - We want to ensure that all parishioners continue to feel supported as we move through this transition. Everyone is encouraged to begin reaching out to the newly assigned staff members in their specific roles.
  - However, during this transitional period, the following interim arrangements will remain in place to ensure continuity of care and support:
    - St. Alphonsus Parish: Parishioners may continue to contact Lori Corcoro, who will still be available to assist with processing and support needs.
    - St. Benedict Parish: Anita Hardwick will continue to serve and support parishioners and ministries.
    - St. John Parish: Parishioners may continue contacting the same staff they've previously reached out to.
  - As we gradually transition responsibilities to new staff members, these arrangements will help maintain stability and ensure no one feels left behind.

# 2 CONSOLIDATING AND STREAMLINING PARISH OPERATIONS FOR GREATER EFFICIENCY AND COLLABORATION

- Who makes up the Parish Family Admin and Operations Support Team?



## Director of Parish Operations

Dani D'Amelio  
*Serves as the Pastor's primary support and oversees the overall finances and operations of the Parish Family.*



## Front Desk/Admin Staff

HongPhuc Nguyen  
Sheila Marty



## Pastoral Associate for Administration

Mary Wiseman  
*Oversees the admin functions of parish operations- front desk services, facilities, and the overall day-to-day operations.*



## Bookkeepers

Margaret Golliver  
Michelle Knott (focused on St. Al and St. Ben)



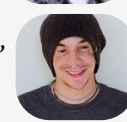
## Director of Communications

Racquel Servito  
*Leads internal and external communications, including the weekly bulletin, e-newsletter, website, and social media.*



## On Site Maintenance Staff

St. John: Ryan Roach, Beatriz Palomo Paredes, Adam Peterson and  
Lara Garcia  
St. Al: Erik Ronning



## Director of Development

Teresa Gillett  
*Oversees fundraising, stewardship, and donor engagement efforts across the Parish Family.*



## Site Director for St. Benedict

Anita Hardwick  
*Oversees day-to-day operations at St. Benedict, including facilities management, site scheduling, and supporting parish ministries and events.*

- Where will the Admin and Operations Support Team be based to facilitate collaboration?
  - All admin staff, except Anita Hardwick and Erik Ronning, will have their offices at the St. John Parish Admin Building: [106 N 79th St, Seattle, WA 98103](https://www.google.com/maps/place/106+N+79th+St,+Seattle,+WA+98103/@47.625147,-122.325147,15z)



- How can parishioners reach out with questions about Mass times, facility use, or their contribution records?
  - Call us at 206-782-2810 (the current trunkline of the St. John Parish Admin Office)
  - Email us at [info@parishfamily14.org](mailto:info@parishfamily14.org)
  - Message us through our Facebook and Instagram: @parishfamily14
  - Visit our Parish Family Office at the St. John Parish Admin Building: [106 N 79th St, Seattle, WA 98103](#), with office hours: 8:00 AM - 4:00 PM.
- What is the parishioners go-to for Parish Family news and updates?
  - Weekly bulletin distributed in the church after Vigil and Sunday masses
  - Our Parish Family Facebook and Instagram pages: @parishfamily14
  - Mass announcements after Vigil and Sunday masses
  - One weekly e-newsletter
  - One Parish Family website (in progress)

### 3 UNIFYING AND ENRICHING FAITH FORMATION PROGRAMS FOR CHILDREN, YOUTH, AND ADULTS ACROSS ALL THREE PARISHES

- Who makes up the Parish Family Faith Formation team?
  - We are still looking for a Director for Pastoral Ministries, who will be working with our Pastor, Parochial Vicar and the leadership team to help make our faith formation programs more focused on living and sharing our faith in everyday life.
  - We are blessed with the following dedicated faith formation team who will serve our Parish Family in new and expanded roles.



#### **Executive Assistant for Faith Formation**

Lori Corcoro

[lcorcoro@parishfamily14.org](mailto:lcorcoro@parishfamily14.org)

*Provides logistical support to the faith formation team and supports the establishing of a new model for small group ministry. As well as inviting and supporting faith formation volunteers.*



#### **Evangelization Coordinator**

Claire Shea

[cshea@parishfamily14.org](mailto:cshea@parishfamily14.org)

*Leads OCIA, OCIA-C and establishing a new model for small group ministry*



#### **Sacramental Coordinator**

Julia Rudden

[jrudden@parishfamily14.org](mailto:jrudden@parishfamily14.org)

*Sacramental preparations for weddings, baptisms, first reconciliations, first communions, funerals and Quinceaneras.*



#### **Liturgy Coordinator**

Daniel Pelfrey

[dpelfrey@parishfamily14.org](mailto:dpelfrey@parishfamily14.org)

*Fosters the unification of scheduling, planning and execution of liturgy, including managing the liturgical ministry volunteers*

- Where will the Faith Formation Team be based to facilitate collaboration?
  - All Faith Formation staff, including the Parochial Vicar and the Choir Director (Andrew Koch), will have their offices at the St. Benedict Parish Center: [1805 N 49th St, Seattle, WA 98103](#).
- How can parishioners get in touch for questions about sacramental preparations and records, volunteering in liturgical ministries, and submitting mass intention requests?
  - Call us at 206-632-0843 (the current front desk of St. Benedict)
  - Email us at [lcorcoro@parishfamily14.org](mailto:lcorcoro@parishfamily14.org)
  - Message us through our Facebook and Instagram: @parishfamily14
  - Visit our Faith Formation Hub at the St. Benedict Parish Center: [1805 N 49th St, Seattle, WA 98103](#), , with office hours: 8:00 AM - 4:00 PM.



# 4 RE-STRATEGIZING THE USE OF OFFICE FACILITIES BY DESIGNATING KEY HUBS AT EACH PARISH SITE.

To make the best use of our available space and foster working relationships and collaboration, we are organizing our operations into the following hubs and place the staff in the same location by department.

- **St. Alphonsus – Priest Hub**

- The St. Alphonsus Parish Office will be closed and repurposed to use as the Rectory. It will be the largest rectory within the Archdiocese of Seattle.
- St. Alphonsus will serve as the main residence and ministry base for our clergy team. This includes our Pastor, Parochial Vicar and in-resident priests.
- By having a shared living and working space, our priests can better collaborate in planning liturgies, sacraments, and pastoral care for all three parishes.
- Lori is happy to continue assisting parishioners with scheduling facilities and is always ready to help during this transition. She may be reached at the Faith Formation Office: 206-632-0843, or [lcorcoro@parishfamily14.org](mailto:lcorcoro@parishfamily14.org).

- **St. Benedict – Faith Formation Hub**

- The St. Benedict Parish Center will become the central hub for all faith formation programs and ministry support across our Parish Family.
- This site will also host key staff, including Fr. Paul Nkolombidzo, Parochial Vicar, and Andrew Koch, Choir Director.
- Spacious meeting rooms and classrooms will be available for faith formation classes, ministry gatherings, and sacramental preparation sessions.
- The site will also provide resources and support for catechists and formation coordinators serving all Parish Family 14 parishes.
- In addition, sacramental records for St. Alphonsus, St. Benedict, and St. John the Evangelist will be securely stored at this location.

- **St. John the Evangelist – Operations Hub**

- St. John the Evangelist will function as the central office for parish administration and operations.
- Staff who handle budgeting, bookkeeping, facilities maintenance, technology, human resources, communications, and office support will work from this hub.
- It will also be the base for producing the bulletin, website updates, newsletters, and other communications that serve the entire community.
- Having one unified operations center helps ensure consistency, accountability, and good stewardship of our shared resources.

**Have a question or suggestion for our Parish Family?**

Your voice matters, and we're committed to listening.

Please visit <https://bit.ly/PF14Queries> or scan the QR code.



## PARISH FAMILY CONTACT INFO:

**Admin/Front Desk:** 206-782-2810 | [info@parishfamily14.org](mailto:info@parishfamily14.org)

**Faith Formation, Liturgy and Sacramental Preparation:**

206-632-0843 | [lcorcoro@parishfamily14.org](mailto:lcorcoro@parishfamily14.org)

**Operations and Administration:**

206-782-2810 ext 314 | [ddamelio@parishfamily14.org](mailto:ddamelio@parishfamily14.org)



**Pastor**  
Fr. Colin Parish



**Parochial Vicar**  
Fr. Paul Nkolombidzo