

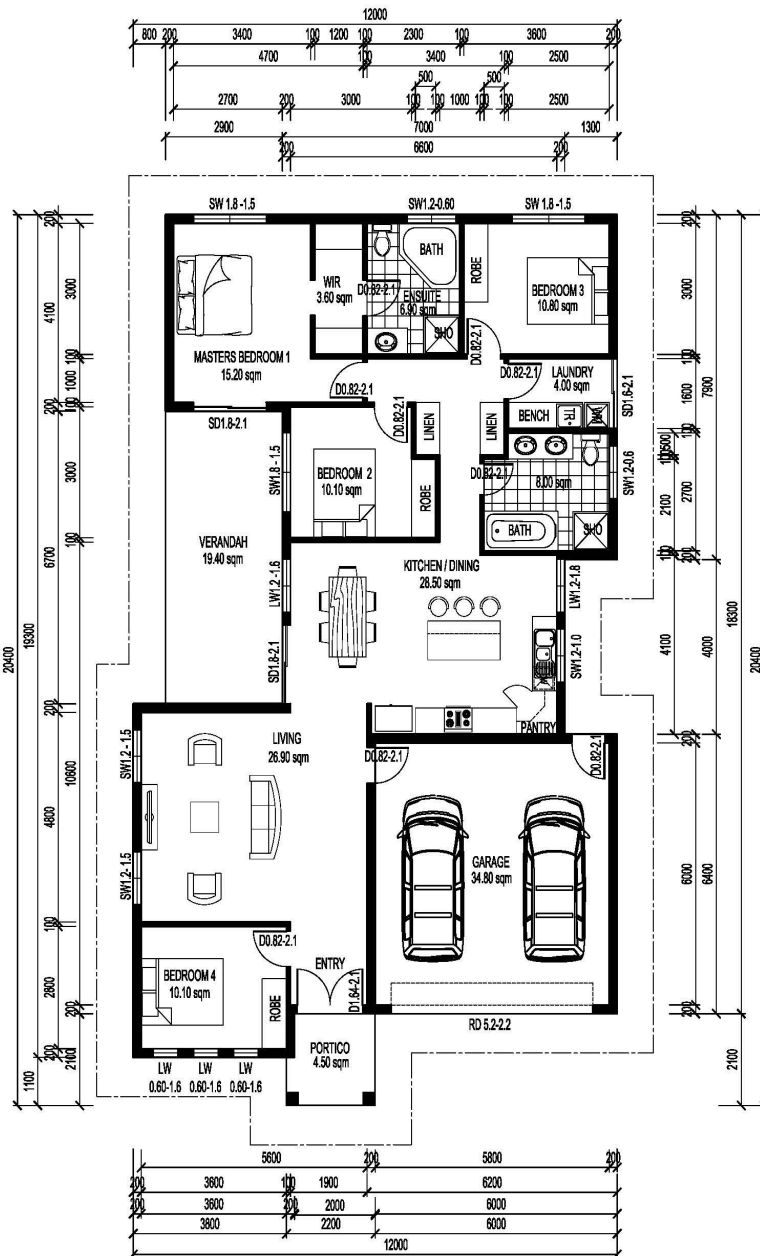
## TORRENS



### DESIGN OVERVIEW

- The TORRENS Series is a spacious design with exceptional finishes
- Muirhead approved Home with consistent breezeway throughout the home
- Consisting of 4 Bedrooms 2 Bathrooms
- Master Bedroom with Ensuite includes Corner Bath
- Double Garage
- This design sits at 214.00sqm
- Vanguard Homes designs can be modified to customer requirements.

**Contact our office for  
Further Information  
0427 925 590**



### Area Analysis (m2)

Floor Area	152.6	Garage	37.5
Verandah	19.5	Portico	4.4
<b>TOTAL</b>		<b>214.00sqm</b>	