

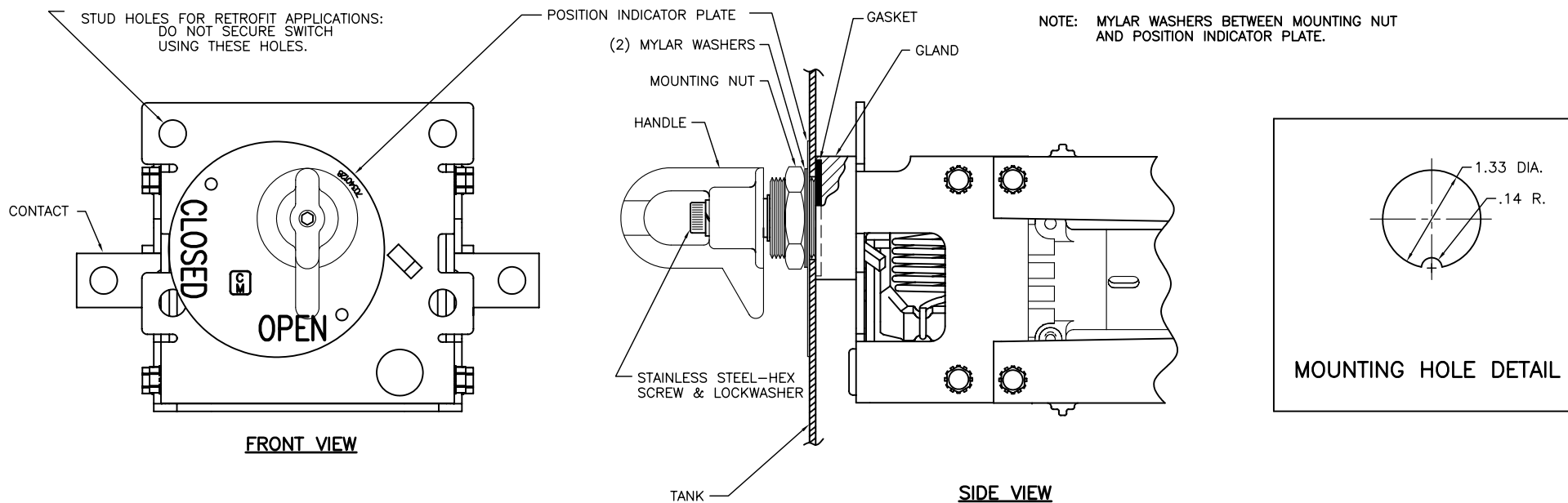
SINGLE NUT MOUNTED SWITCH

1. THE TANK WALL OR COVER MUST HAVE A 1.33 DIAMETER HOLE WITH A NIB KEY FOR SWITCH INSTALLATION. (NOTE: SEE DETAIL BELOW.)
2. INSTALL GASKET ON SWITCH SEALING GLAND AND INSERT THE SWITCH ASSEMBLY INTO THE TANK HOLE. MAKE SURE GASKET IS NOT PINCHED. FOR RETROFIT APPLICATIONS, THE SWITCH CAN BE INSTALLED OVER STUDS. HOWEVER, THE STUDS MUST NOT BE USED TO SECURE THE SWITCH.
3. INSTALL THE POSITION INDICATOR PLATE OVER SEALING GLAND AND INSTALL (2) MYLAR WASHERS NEXT TO THE INDICATOR PLATE. SECURE SWITCH TO TANK USING THE BRASS NUT INCLUDED IN MOUNTING HARDWARE KIT. TORQUE NUT TO 100 FT./LBS.. THE SWITCH IS NOW SECURELY INSTALLED, NO OTHER MEANS OF ATTACHMENT OR SUPPORT IS NECESSARY.
4. FASTEN HANDLE TO SWITCH SHAFT WITH STAINLESS STEEL SCREW AND LOCKWASHER.
5. CONNECT INTERNAL LEADS TO THE SWITCH CONTACTS USING 3/8" HARDWARE.
6. OPERATE SWITCH ONE COMPLETE CYCLE AFTER OIL FILL.

CDS REFERENCE NUMBERS

CDS 34 001(PAGE 1 OF 5)
CDS 34 001(PAGE 5 OF 5)

NOTE: REFERENCE CUSTOMER DATA SHEETS FOR RATINGS, DIMENSIONS, MINIMUM OIL LEVEL AND REQUIRED CLEARANCES FOR EACH SWITCH.



NOTE: DIMENSIONS ARE IN INCHES AND ARE FOR REFERENCE ONLY.

<small>DRWN BY:</small> B.M.	Central Moloney, Inc. Components Operation	<small>5500 Jefferson Parkway—Phone (870) 247-5320—Pine Bluff, Arkansas 71602</small>	
<small>DATE:</small> 5/27/98		<small>NO.:</small> CDS 34 100	<small>REV.:</small> 6

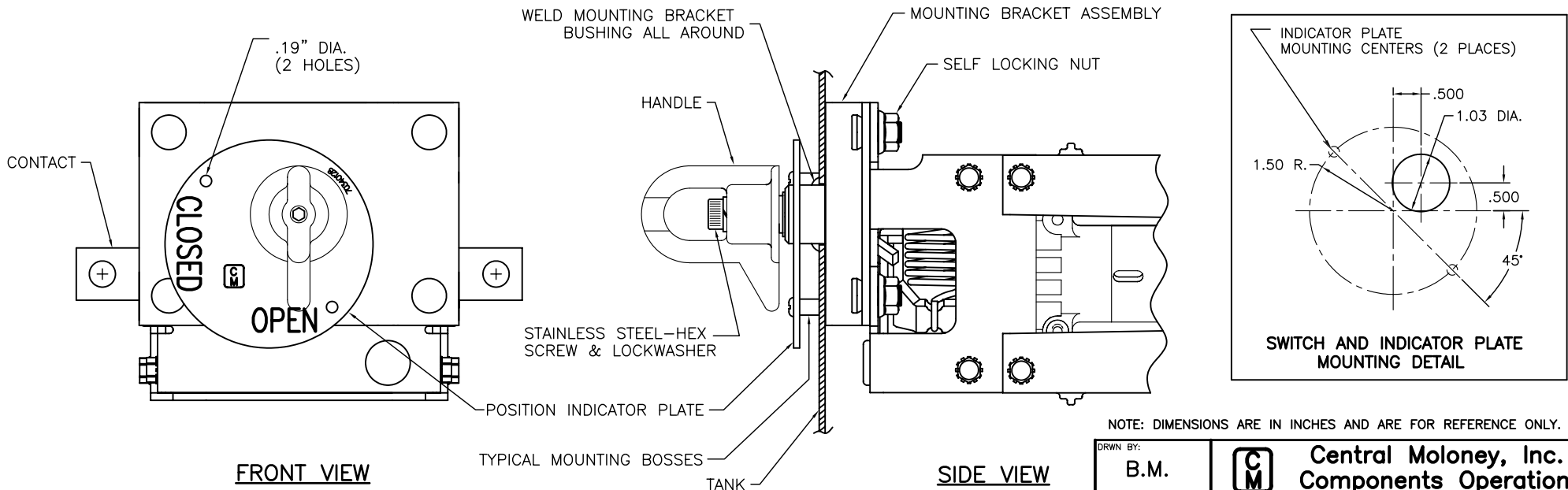
WELD MOUNTED SWITCH

1. SWITCH MOUNTING REQUIRES THE TANK WALL TO HAVE A 1.030 DIAMETER HOLE AND MOUNTING STUDS FOR THE POSITION INDICATOR PLATE LOCATED AS SHOWN BELOW.
2. INSERT SWITCH MOUNTING BRACKET BUSHING COMPLETELY THROUGH THE TANK HOLE. POSITION THE MOUNTING BRACKET. TACK WELD INSIDE TANK TO HOLD IN POSITION. WELD COMPLETELY AROUND THE MOUNTING BRACKET BUSHING TO THE TANK WALL WITH AN OIL TIGHT WELD.
3. REMOVE PROTECTIVE CAP FROM INPUT SHAFT.
4. INSPECT THE HOLE IN THE SWITCH MOUNTING PLATE BUSHING TO INSURE THAT THE WELDING PROCESS HAS NOT DEFORMED THE HOLE. IF SO, REAM THE HOLE TO .630" DIA. $\pm .002$ ". MAKE SURE THE HOLE IS FREE FROM BURRS, WELD SPATTER, METAL SHAVINGS AND ANY OTHER DEBRIS.
5. SLIDE THE SHAFT THROUGH THE HOLE IN THE MOUNTING PLATE BUSHING TAKING CARE NOT TO PINCH THE O-RINGS. THE O-RINGS ARE SHIPPED PRE-LUBRICATED.
6. ATTACH THE SWITCH FRAME TO THE SWITCH MOUNTING PLATE USING (4) FOUR 3/8"-16 SELF LOCKING NUTS (INCLUDED IN THE HARDWARE KIT.)
7. INSTALL THE POSITION INDICATOR PLATE TO MOUNTING STUDS AND ATTACH HANDLE TO INPUT SHAFT WITH STAINLESS STEEL SCREW AND LOCKWASHER. OPERATE SWITCH TO INSURE FREEDOM OF MOVEMENT.
8. CONNECT INTERNAL LEADS TO THE SWITCH CONTACTS USING 3/8" HARDWARE.
9. OPERATE SWITCH ONE COMPLETE CYCLE AFTER OIL FILL.

CDS REFERENCE NUMBERS

CDS 34 001(PAGE 2 OF 5)
 CDS 34 001(PAGE 3 OF 5)
 CDS 34 001(PAGE 4 OF 5)

NOTE: REFERENCE CUSTOMER DATA SHEETS FOR RATINGS, DIMENSIONS, MINIMUM OIL LEVEL AND REQUIRED CLEARANCES FOR EACH SWITCH.



NOTE: DIMENSIONS ARE IN INCHES AND ARE FOR REFERENCE ONLY.

DRWN BY: B.M.		Central Moloney, Inc. Components Operation	
DATE: 5/27/98	5500 Jefferson Parkway--Phone (870) 247-5320--Pine Bluff, Arkansas 71602		REV. DATE: 7/31/06
NO.	CDS 34 100	REV.	6