

CUSTOMER DATA SHEET

BUSHING ASSEMBLY INCLUDES:

PART NUMBER	THREAD PROT. CAP	DUST PROT. CAP	GASKET BUNA 'N'	CLAMP RING *	REM. STUD
70191852	1	1	1		
70191853	1	1	1	1 (A)	
70191854	1	1	1	1 (B)	
70191855	1	1	1	1 (C)	
70191872	1	1	1		1
70191873	1	1	1	1 (A)	1
70191874	1	1	1	1 (B)	1
70191875	1	1	1	1 (C)	1

*** CLAMP RING DESCRIPTION:**

- (A) 3 HOLE, MILD STEEL-ZINC PLATED - P/N 32409400 (ZINC PLATED W/ DICHROMATE COATING)
- (B) 3 HOLE, 300 SERIES STAINLESS STEEL - P/N 32409410
- (C) 4 HOLE, 300 SERIES STAINLESS STEEL - P/N 700003-31

NOTE:

1. REMOVABLE STUD REPLACEMENT KIT #70190051.
2. MOUNTING HOLE - 2.63 DIA. ±.050
3. MINIMUM OIL COVERAGE - 1" OVER TOP OF MOUNTING HOLE.
4. FOR TESTING AND INSERT INSTALLATION USE DIELECTRIC GREASE PER MANUFACTURER'S INSTRUCTIONS.

TORQUE SPECIFICATIONS

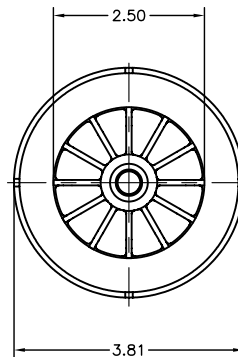
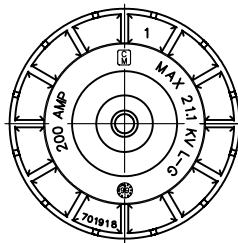
- MOUNTING NUTS.....70-80 IN.-LBS.
- REMOVABLE STUD.....20-22 FT.-LBS.
- 3/8" STUD, INTERNAL & EXTERNAL.....17 FT.-LBS. MAX.

MATERIALS

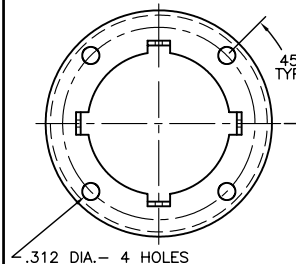
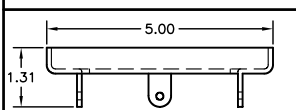
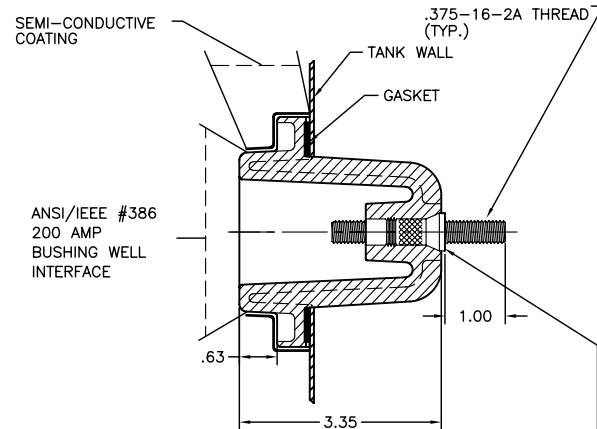
- BODY-BLACK, GLASS REINFORCED, ENGINEERING GRADE THERMOPLASTIC.
- GASKET-BUNA "N"

ELECTRICAL RATINGS

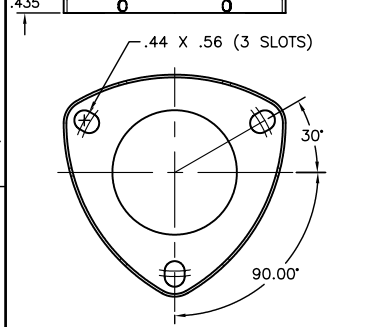
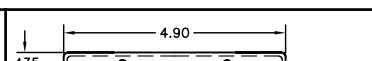
VOLTAGE CLASS.....	35 KV
MAXIMUM LINE TO GROUND.....	21.1 KV
AC 60 Hz (1 MIN.).....	50 KV
DC (15 MIN.).....	103 KV
IMPULSE B.I.L.....	150 KV
MIN. CORONA LEVEL.....	26 KV
CONTINUOUS CURRENT.....	200 AMPS



FIXED STUD

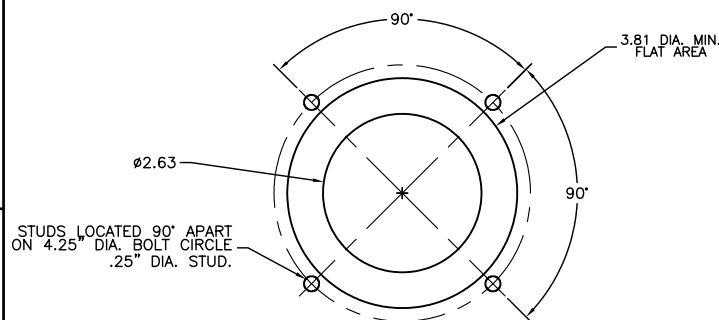
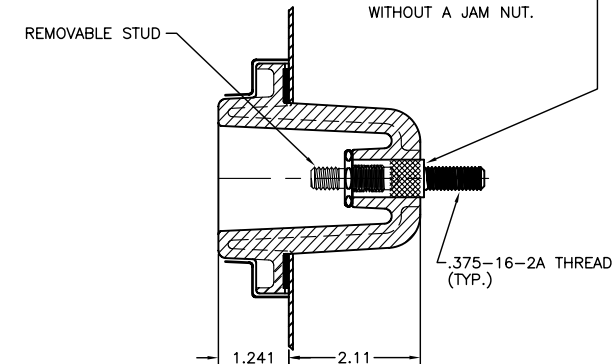


(4) HOLE CLAMP RING

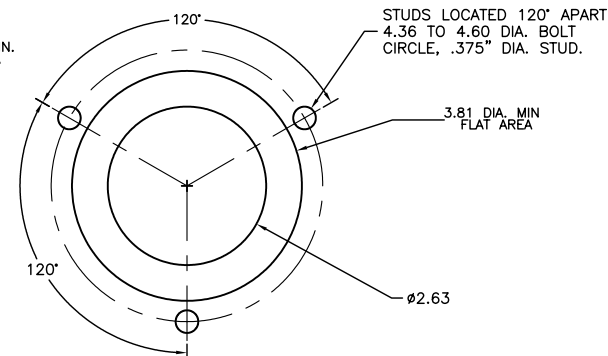


(3) HOLE CLAMP RING

REMOVABLE STUD



MOUNTING HOLE FOR (4) HOLE CLAMP RING



MOUNTING HOLE FOR (3) HOLE CLAMP RING

NOTE: DIMENSIONS ARE IN INCHES AND ARE FOR REFERENCE ONLY.

TUF WELL II - [FIXED & REMOVABLE STUD]

DRWN BY: B.M.	 Central Moloney, Inc. Components Operation
DATE 2/4/00	
NO. CDS 19 002	REV. DATE 4 2/18/08

DESCRIPTION