



Understanding Fees and Funding at New Beginnings

Version 3- Updated November 2025



Joining New Beginnings

View our childcare offer at
www.newbeginningsdaynursery.co.uk



Register your interest to join New
Beginnings

 **REGISTER NOW**

View the nursery , Offer of place
subject to availability



Apply for funding



Sign up to our third party
systems



Become part of the family





Welcome to your Funded Childcare Guide 2025



Introduction

We understand that registering your child in a nursery can evoke a myriad of emotions, and we genuinely value the confidence you have placed in us. Navigating fees and funding can feel overwhelming. This guide aims to present information about fees and funding in a clear, transparent and accessible way.

Simplifying Childcare Funding

Grasping childcare funding can be challenging, but we are here to assist you. In England, there are two government funding programs available. This guide will help you understand how you can consider possible childcare funding available to you.





Government funded schemes



Universal Credit Childcare

For working families claiming Universal Credit with children under 17. Claim back up to 85% of eligible childcare costs. Upfront childcare costs may be available to eligible parents moving in to work or increasing hours.

Tax-Free Childcare

For eligible working parents who can get a £2 top-up for every £8 towards the cost of their childcare.

30 hours childcare

For eligible working families in England with children aged 9 months to 4 years.

15 hours childcare

For all families in England with children aged 3 to 4 years.

15 hours for 2 year olds receiving support

15 hours early learning for families in England.

In England, there are several government-backed schemes to help with the cost of nursery care — from funded hours to tax-free support. Explore the options to see what you might be eligible for.

Childcare support available

Find the support you need

Select a scheme to find out more about it, who qualifies and how to apply.

30 hours childcare for eligible working families in England

Available for children aged 9 months to 4 years.

[Read more and apply](#)

15 hours early learning for families in England, receiving some additional forms of support

For children aged 2 years receiving some additional forms of support.

[Read more and apply](#)

15 hours childcare for all families in England

For children aged 3-4 years.

[Read more and apply](#)

Tax-Free Childcare

If you're a working parent or carer, you can get a £2 top-up for every £8 that you pay towards childcare.

[Read more and apply](#)

Universal Credit Childcare

For working families claiming Universal Credit.

[Read more and apply](#)

Study support

For families where one or both of the parents are studying.

[Read more and apply](#)

www.beststartinlife.gov.uk



Government Funding Offers

2 Year Olds already in receipt of Government support*

Your 2-year-old may qualify if:

- You receive certain government benefits
- Your child has SEND or receives Disability Living Allowance
- Your child is under a kinship or guardianship order
- Your child is being looked after by the local authority

All 3 and 4 year olds in England are entitled to 15 hours of funded childcare per week during term time — no application needed.

Working families- all eligible working parents of children aged 9 months up to 4-years-old can access up to 30 hours free childcare per week for 38 weeks of the year, which is a further 570 hours, totalling 1140 hours per year.



From September 2025		Group	9months-2 yrs	2-3 years	3-4 years
 Entitlement	<input type="checkbox"/>	All parents	×	×	up to 15 hours
	<input type="checkbox"/>	Working families	up to 30 hours	up to 30 hours	up to 30 hours
	<input type="checkbox"/>	Families receiving additional support	×	up to 15 hours	
	<input type="checkbox"/>				

*Funded places for 2 year olds can be limited. For more information speak to your nursery manager.



Stretched Offer

From September 2025, we will 'stretch' the funded hours.

How that works varies between our nurseries, as some Local Authorities have their own requirements regarding this.

For example:

- When you are eligible for 15 hours, you will be able to access up to 570 hours or 11.4 hours per week for 50 weeks of the year.
- If you are eligible for 30 hours, you can access up to 1140 hours or 22.8 funded hours per week, across 50 weeks.

Please note that for families joining New Beginnings from the Spring and Summer 2026 terms the stretch offer will be slightly different.


See the funding policy for more information.

COMPARE & CONTRAST

FUNDING FOR TERM TIME ONLY

Term-time only funding refers to childcare funding that is available for a child to attend nursery during school term periods, typically 38 weeks of the year.

This means the funding does not cover school holidays, and parents are responsible for childcare costs during these periods. The number of funded hours per week can vary, with options for 15 or 30 hours per week, depending on eligibility




STRETCHED OFFER FUNDING

NEW

"Stretched funding" in the context of early years childcare funding means spreading the allocated funded hours (15 hr offer - 570 or 30 hr offer 1140) across more than 38 weeks of the year. This allows families to use fewer hours per week but over a longer period, potentially making childcare more accessible throughout the year, including during school holidays.

15 hours x 38 weeks = 570 hours funded childcare
Stretched over 50 weeks = up to 11.4 hours per week *

30 hours x 38 weeks = 1140 hours funded childcare
Stretched over 50 weeks = up to 22.8 hours per week *



*Voluntary charges relating to Meals, consumables and activities apply to funded hours.
All hours outside of the funding is classed as private hours



Helping Your Funded Hours Go Further

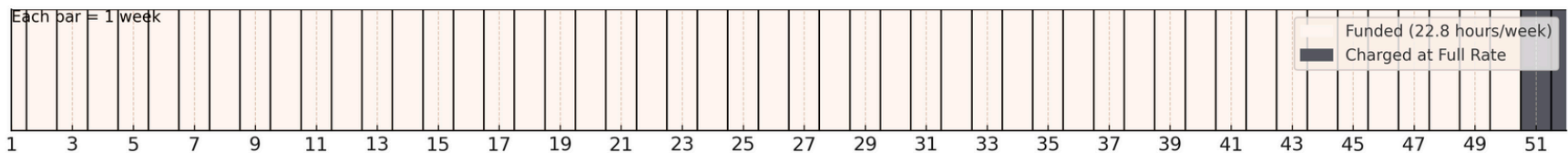
New Beginnings offers year-round childcare with a minimum attendance of two full-day sessions.

Funded childcare is offered as follows:

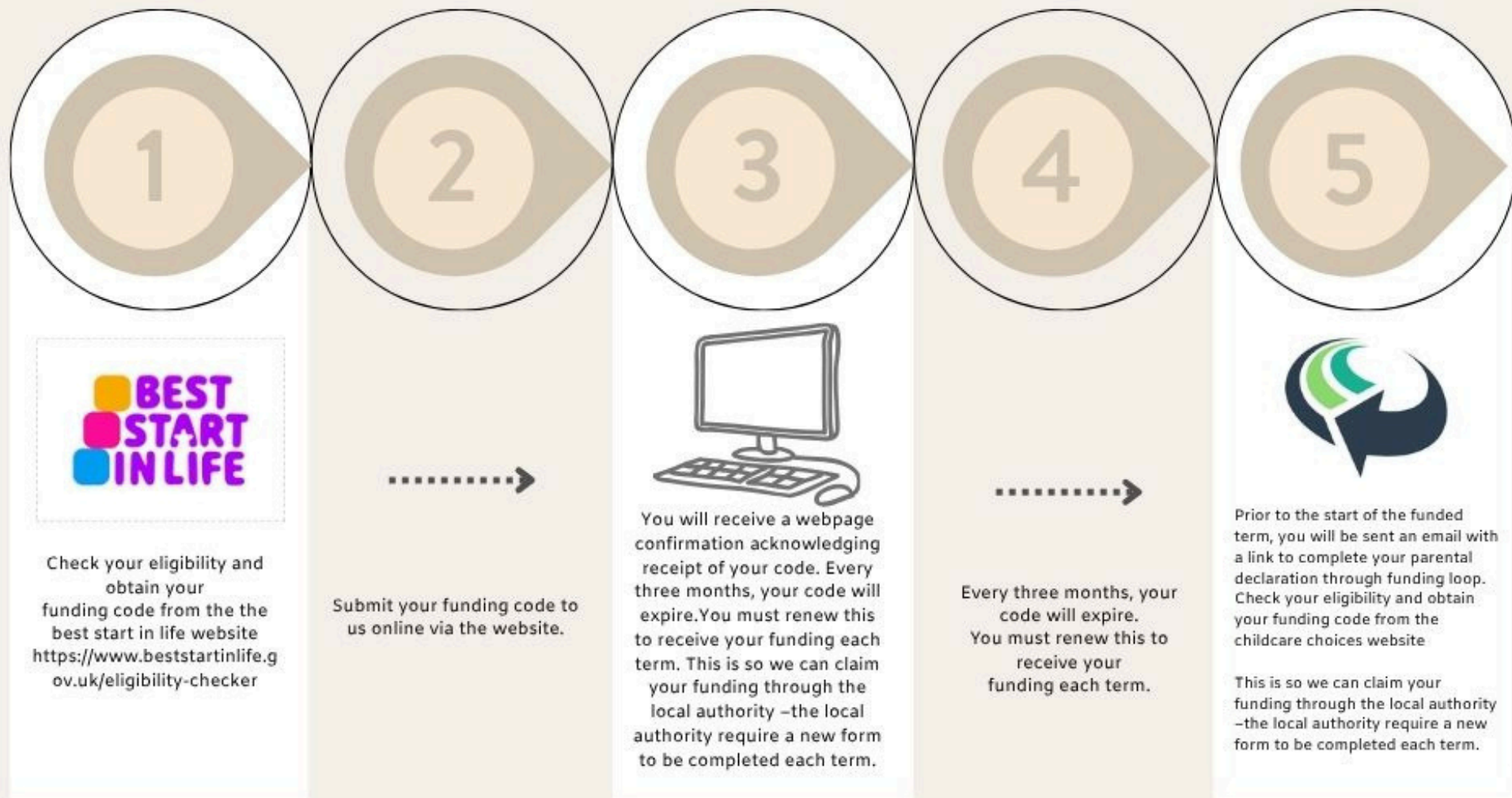
- Parents can claim up to 10 funded hours per day.
- Sessions must be booked as a full day.
- Funded hours are spread across 50 weeks, averaging 11.4 (570 hours per annum) or 22.8 (1140) hours per week.
- 2 weeks of the year are chargeable as per the terms and conditions . This is the period of the 22nd of December to the 2nd of January 2026
- Full fees apply during any unfunded hours.



22.8 Hours for 50 Weeks - Funding Breakdown Timeline



Claiming your funding at New Beginnings



For more information about how to apply for funding visit the best start in life website www.beststartinlife.gov.uk



Working Families Funded Childcare for 9-Month-Olds to 4-Year-Olds

From September 2025, all eligible working parents of children aged 9 months up to 3-years-old can access 30 hours free childcare per week for 38 weeks of the year. This is wonderful news for our families meaning that children can access more nursery education.

How will it work

The 30 hours of funding is stretched over 50 weeks* – your child will receive 1140 hours per year which works out as 22.8 hours per week.*

This can be split over 3 full days (8am-6pm) which provides 10 hours per day for the first 2 days and 2.8 hours for the third day**. Government funding covers care, and not meals or additional services.

Take a look at the all inclusive menu package and information on additional service charges for funded hours.



*Distributing funding over 50 weeks ensures a consistent experience throughout the year, aiding in establishing a familiar routine for children.

This balanced approach to nursery spaces throughout the year optimises our availability for families.

**If families wish to only attend nursery two days a week, you can access up to 1000 hours of the 1140 allocated on the 30 hours scheme. The balance of 140 will remain with the government or you can access at an additional provider.

See website for more information about accessing funded hours across providers.



2 Year Olds already in receipt of Government support

If you or your child gets extra support, you may be eligible for funded education and childcare for 2-year-olds.

15 hours of funded childcare over 38 weeks equates to 570 funded childcare hours a year. Under New Beginnings stretched offer this equates to 11.4 hours of funded childcare a week over 50 weeks of the year.*

To apply, you need to contact the early years team or Family Information Service at your local council.

Information on all the Early Years Funding eligibility criteria can be found here:
<https://www.beststartinlife.gov.uk/>



*Where parents meet the eligibility criteria for both the disadvantaged 2-year-old entitlement and the working parent entitlement, local authorities have a duty to account for any hours available under the disadvantaged entitlement when determining how many hours a parent should be funded for under the working parent entitlement. This means that local authorities must fund the first 15 hours under the disadvantaged entitlement before they fund any working parent hours. Until September 2025, children eligible for both entitlements will only be able to access 15 hours under the disadvantaged entitlement. From September 2025 they will be able to access 15 hours under the disadvantaged entitlement plus 15 hours under the working parent entitlement.



15 Hours of Universal Funding for 3/4-Year-Olds

All 3 and 4-year-olds are entitled to 15 hours of funded early education or childcare per week, for 38 weeks of the year.

There are no eligibility requirements for this funding and there is no application process.

How will it work at New Beginnings

The 15 hours of funding is stretched over 50 weeks* – your child will receive 570 hours per year which works out as 11.4 hours per week. This will be split over 2 full days (8am-6pm) which provides 10 hours on the first day and 1.4 hours on the second day.

You will be eligible for this funding the term after your child turns 3 years old.



Child's 3rd birthday	Term funding begins	Term period
1 January - 31 March	Summer	1 April - 31 August
1 April - 31 August	Autumn	1 September - 31 December
1 September - 31 December	Spring	1 January - 31 March



Statements & Invoices



- Currently fully itemised statements are provided termly
- As we are moving to the Famly app we will be using Famly to produce monthly invoices.

2026



- From January 2026 all parents across our nurseries will receive a monthly invoice via the Famly app.
- Termly statements will NOT be provided.
- We will be issuing parents with stretched offer figures that will apply across the year.
- Bank holidays may effect funding claims for parents attending 2 or 3 days that include a Monday.



Charges outside of funded hours



Hours over the funded hours are charged at the New beginnings daily rates as per the nurseries terms and conditions.

www.newbeginningsdaynursery.co.uk

Childcare fee sheet

New Beginnings, Romford
50 Main Road ,
Romford,
Essex,
RM1



Private fee rates

	Start	End	0-2 Year Olds	2-3 Year Olds	3-5 Year Olds
Full days	8am	6pm	£89	£87	£86

Additional Voluntary charges (on funded hours)

Full Day (10 hours) Meals & Snacks £12.50

Please note that Meals and Snacks will be prorated on the days where funding is less than 10 hours.

Full Day (10 hours) Enrichment activities £0.60p per funded hour . See Fees and funding guide for a breakdown of what is included within the enrichment charge

Additional information

Fees will include all meals, drinks and snacks prepared on-site by our Nursery Chef

There is a non-refundable Registration Fee (applicable to non-funded hours only) payable to secure your place of £65 (see T&Cs)

Deposits for non-funded hours are equivalent to 2 weeks fees (see T&Cs)

Fees are based on 52 weeks per year, paid monthly in advance (closure over Christmas is not chargeable)

The nursery will be closed on all Bank and Public Holidays (normal charges still apply)

A minimum booking of 2 full days per week is required for all age groups.

No refunds will be given for sickness or holidays (see T&Cs) and swapping sessions is not permitted.

We do not provide childcare by the hour.

Invoices will be produced monthly via Famly

*with thanks
New Beginnings team*

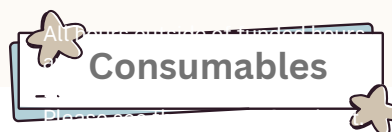
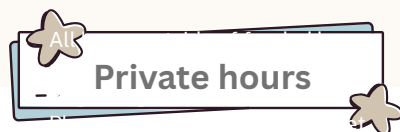


Create a **POSITIVE**
and **INCLUSIVE**
learning
ENVIRONMENT

Additional Voluntary Charges

Government funding for early years education provides basic childcare for eligible children, but it does not cover meals, snacks, , suncream, high-quality resources, or extra-curricular activities.

At New Beginnings, we believe early years education should be rich, engaging, and inspiring. To maintain high standards and make life easier for families, we offer meals and snacks on funded hours and enrichment activities . This are itemised on the invoices provided by Family. This contribution ensures that your child has everything they need for a happy, safe, and enriching nursery experience—from seasonal menus and nourishing snacks to exciting activities that support their learning and development, giving them the very best start in life.



See individual nurseries
webpages for more
details on daily fee
charges

Breakfast
AM Snack
Lunch inc dessert
PM Snack
Afternoon light tea inc
dessert
(dietary care plans, 3 week
award winning menu)

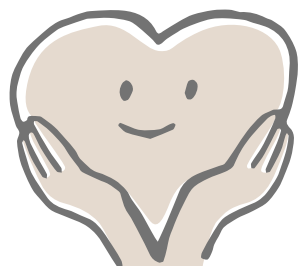
Suncream & wipes for
general hygiene

Access to the Family system, including
activity ideas for home learning.
Our bespoke Early Years curriculum “Watch
Us Grow”, led by a qualified Early Years
teacher
A lending library featuring speech and
language resources with guided notes
Boogie Mites music programmes (Teenies,
Minis and School-Ready)
Trips and outings in the local community
Sign and Sign (Makaton) sessions
Seasonal events and celebrations
Sensory room access for enhanced sensory
therapy (not available at the Rainham site)
Eco-Schools accredited activities, including
seasonal gardening projects
A cooking and healthy eating programme

£12.50 per day *



*Please speak to your Nursery Manager for enrichment activities on offer at your child's nursery. New Beginnings reserves the right to make exceptions to its funding terms on an individual basis. This policy works alongside our Funding Contract Terms and Conditions and Parent Declaration Form.





Nutrition and meals

Mealtimes serve as crucial learning opportunities, enabling children to gain confidence in trying new flavours, managing food, and using utensils — each of which is vital for preparing them for school.

What's included in the meal package?

- Three nutritious and balanced meals per day
- Soil association accredited menus
- Freshly prepared by our on-site chefs
- A range of snacks and drinks
- Dietary and allergies catered for
- Individual meal plans available online via famly for parents to view

Nursery Managers, Chefs, and health & safety managers, conduct regular checks regarding our Food Safety standards in our kitchens. We are also inspected by Local Council Environmental Health Departments to ensure we meet all Food Safety Regulations.



CREATE
Healthy
HABITS



We use food suppliers with a proven track record of Food Safety, quality, and service. View our sample nursery menus, which clearly displays any allergen information.

healthy
• BODY •
healthy
• LIFE •



If you are considering opting out of the all inclusive meal package, please first discuss your decision with a member of the management team. Options will be discussed.



Frequently asked questions (FAQ)



Understanding Funded Entitlements- What Do Funded Entitlements Cover?

Government funding provides ****15 or 30 hours**** of free, high-quality, and flexible childcare. However, it does not cover extra hours, activities, or additional costs such as meals. You will receive a monthly invoice that offers clear, transparent, and itemised costs, indicating how the funded hours are allocated. This allows you to see your child's free entitlement as well as any charges for additional services and hours.

What Additional Charges will I Incur?

Government funding is limited in hours and does not include meals, enhancements, or the various extra activities offered at New Beginnings. For further details, please refer to the Additional Voluntary Charge (AVC) on the nurseries fee sheet and the nurseries funding policy.

How Can I Check My Entitlement and Apply for the Extended 30 Hours Entitlement for 9 Months – 3 Years ?

To apply, please visit www.beststartinlife.gov.uk/eligibility-checker online. Ensure you have the following information ready before starting your application:

- Your national insurance number (or unique taxpayer reference if self-employed)
- The date you started or are scheduled to start work
- Details of any government support or benefits you receive
- Your child's UK birth certificate reference number (if available)

Once you have applied for the codes, you will need to re-verify your code every three months. Failure to reapply could mean you are no longer eligible for funding.



Frequently asked questions (FAQ)



When Should I Apply for Government Funding?

We recommend contacting your nursery as early as possible to secure your funded place (conditions apply). You can access your funded hours starting from the term after you meet all eligibility criteria for the entitlement you are applying for. These terms commence on **January 1st, April 1st, and September 1st**.

When is the deadline date for the nursery to receive a funding code ?

All codes are required to be sent to your nursery using the online funding form by the nursery deadlines as indicated by the nursery. Failure to submit your code by this date may result in your child's funding not being allocated for the next term.

How often do I need to log into my childcare account?

You need to log into your childcare account every 3 months to reconfirm that your details are up to date and that you remain eligible for the childcare entitlements for working parents and/or Tax-Free Childcare. It is the parents' responsibility to make sure that codes are reconfirmed every three months. Failure to renew codes may result in additional funding being removed.

What days can I access my funding?

From September 2025 funding can be accessed across any day of the week, however new families registering after September 2025 will only be able to access funding if your child's booking pattern includes a Monday or a Friday. This is to ensure that we can offer funding to as many families as possible, and balance our available spaces accordingly. We want to ensure the maximum number of families can access a place for their child. Please speak to the client service manager for further information. Please note that funded hours are offered according to availability at individual sites.



Frequently asked questions (FAQ)



What Happens If I Can't or Don't Want to Pay Additional Voluntary Charges?

If parents are unable or unwilling to pay the Additional Voluntary Charges (AVC), it is important to discuss this with a member of the management team. To ensure that all children receive uninterrupted care, New Beginnings provides a limited number of Fully Funded childcare places, where parents are exempt from these charges. Several factors will be considered when evaluating requests for a fully funded place, including whether a child qualifies for 2-year-old funding, Early Years Pupil Premium (EYPP), or any other local funding options aimed at reducing costs.

Can I Bring a Packed Lunch for My Child?

New Beginnings enforces a strict policy that prohibits families from bringing their own food, including pre-packed meals, to the nursery. This measure is in place to prevent allergen risks and to manage storage and handling issues effectively. See meal policy for further information.

Do You Offer Additional Support Funding for Two-Year-Olds?

Yes, we do provide additional funding for two-year-olds who qualify for government support and meet certain criteria, such as:

- The child has Special Educational Needs (SEND) or receives Disability Living Allowance.
- The child is in the care of the Local Authority.
- The child has a guardianship or kinship order.

Please note that places may be limited, so we encourage you to speak with your nursery for further details.



Frequently asked questions (FAQ)



Can my child access funding across two provisions?

Where a child attends more than one funded setting, parents will need to discuss with providers how their funding is applied to prevent overclaims and the risk of funding being withdrawn.

What happens if my child is absent?

New Beginnings records absence and we follow up and support parents whose child fails to attend regularly. Continued periods of absence may be reported to the Local Authority who may recall/stop funding for a child.

How will my funding be claimed?

Funding will be claimed based on a child's permanent booking pattern. The Parent Declaration must reflect the permanent booking pattern. Any extra/ad hoc sessions that are booked will not be covered by funding and will be charged in full.

How much notice do I need to provide to change my sessions or to opt out of additional service charges ?

A term's notice is required for any changes made to the pattern of funded hours confirmed. New Beginnings reserves all rights regarding the changing of sessions and is not obliged to allow alterations to session patterns. Where a child is on a Fully Funded offering, we reserve the right to amend sessions, days of attendance and timing, which is reviewed termly.

For more FAQs please visit the nursery website

www.newbeginningsdaynursery.co.uk