



The Ghan and Top End

Featuring Florence Falls and a Charles Darwin Sunset Dinner Cruise

7 Days | Sunday 16 to Saturday 22 August 2026

Begin your adventure in Darwin, where tropical landscapes, dramatic waterfalls and thriving wetlands await. Discover the wonders of Litchfield National Park with its thundering Florence Falls, then glide through the Corroboree Billabong and Mary River Wetlands on a captivating wildlife cruise. Immerse yourself in Darwin's culture at the Museum and Art Gallery of the Northern Territory before a magical sunset dinner cruise on Darwin Harbour. Then step aboard The Ghan for an unforgettable four-day rail journey through the heart of Australia, from the lush Top End to the southern coast. Along the way, explore Katherine's gorges, the outback spirit of Alice Springs and the underground town of Coober Pedy. Conclude your journey in Adelaide with time to discover its charming markets, leafy boulevards and the seaside beauty of Glenelg.

Highlights

- Iconic journey on The Ghan – Darwin to Adelaide
- Off-train adventures in Katherine, Alice Springs and Coober Pedy
- Darwin's stunning sunset buffet dinner cruise
- Full day tour of spectacular Litchfield National Park
- Safari cruise on Corroboree Billabong and Mary River Wetlands
- Darwin's fascinating Museum & Art Gallery of the Northern Territory
- Discover Adelaide's Central Market and Glenelg

Inclusions

- Pre/post tour transfers (ex Perth, Western Australia)
- Airfares and taxes (ex Perth, Western Australia)
- 18 meals
- 6 nights' accommodation
- Tours and attractions
- Professional Villa Tour Leader
- Onboard Experience: All-inclusive dining in the Queen Adelaide Restaurant, Australian wines, beers, base spirits, non-alcoholic beverages and Off Train Experiences.

FOR MORE FABULOUS VILLA TOURS CALL 08 9754 2026 | TERMS & CONDITIONS APPLY

📞 08 9754 2026 ✉ travel@villa.com.au 💻 villa.com.au



Your holiday itinerary (ex Perth, Western Australia)

Day 1. Perth to Darwin (D)

Your holiday begins with a home pick-up and transfer to Perth Airport for your flight to Darwin. On arrival, you will be met by your Coach Captain and transferred to your hotel. Enjoy time to settle in before gathering for a delicious welcome dinner at the Hilton Darwin.

3 nights: Hilton Darwin

Day 2. Litchfield National Park (BLD)

Today's adventure takes you to the spectacular Litchfield National Park, a region filled with thundering waterfalls, rainforest walks and fascinating magnetic termite mounds. Marvel at the beauty of Florence Falls and wander through lush monsoon forests before pausing at Wangi Falls for morning tea. Later, explore more of the park's highlights before returning to Darwin for dinner.

Day 3. Wetlands, Museum and Sunset Buffet Cruise (BLD)

Head along the Arnhem Highway to the Mary River Wetlands and board a Wildlands Billabong Cruise through the Corroboree Billabong. Keep watch for crocodiles and abundant birdlife before a light lunch at Corroboree Park Tavern. Back in Darwin, visit the Museum and Art Gallery of the Northern Territory to explore its fascinating collections. This evening, dine in style aboard the Charles Darwin, enjoying a spectacular sunset buffet dinner cruise on Darwin Harbour.

Day 4. The Ghan – Katherine (BLD)

This morning, board The Ghan for one of the world's great train journeys. Enjoy the comfort of your Gold Service cabin as the train winds through the Top End landscape. After a leisurely brunch, arrive in Katherine where you can choose from a range of Off Train Experiences, including a cruise through the breathtaking Nitmiluk Gorge. Return aboard The Ghan for a sumptuous dinner and a relaxing evening.

3 nights: The Ghan

Day 5. The Ghan – Alice Springs (BLD)

Wake to a new landscape as The Ghan arrives in Alice Springs. After breakfast, step off the train to discover the heart of the Red Centre on an Off Train Experience. Learn about the town's pioneering history, unique environment and cultural heritage before rejoining your fellow travellers for a special dinner under the stars at the historic Alice Springs Telegraph Station.

Day 6. The Ghan – Coober Pedy (BLD)

Continue south through the vast Australian outback to Coober Pedy, the opal capital of the world. Discover how locals live underground to escape the desert heat and enjoy a unique dining experience below ground. Explore the remarkable landscapes that surround this unusual township before returning to The Ghan for your final evening aboard.

Day 7. The Ghan – Adelaide and homeward bound (BL)

Watch as the red outback gives way to the rolling green hills and vineyards of South Australia. Upon arrival in Adelaide, enjoy a city tour including a visit to Adelaide Central Market and a relaxing lunch by the beach at Glenelg. Later, transfer to Adelaide Airport for your return flight to Perth, where you will be met and safely transferred home.

Please note: There is an opportunity to extend your stay in Adelaide. Additional costs apply. Please enquire with our friendly Villa team.

Itinerary is subject to change. Terms and conditions apply. Call 08 9754 2026 for details.

Upgrades: Available on request at an additional cost – ask our travel consultants for details

FOR MORE FABULOUS VILLA TOURS CALL 08 9754 2026 | TERMS & CONDITIONS APPLY

☎ 08 9754 2026

✉ travel@villa.com.au

💻 villa.com.au



The Ghan and Top End Featuring Florence Falls and a Charles Darwin Sunset Dinner Cruise



The Ghan & Top End

7 Days | Sunday 16 to Saturday 22 August 2026

Cost per person twin share (inc GST)

Price: \$ 8,965 Twin Cabin share pp

Single option: \$ 8,875

Earn 179 villabucks



Active

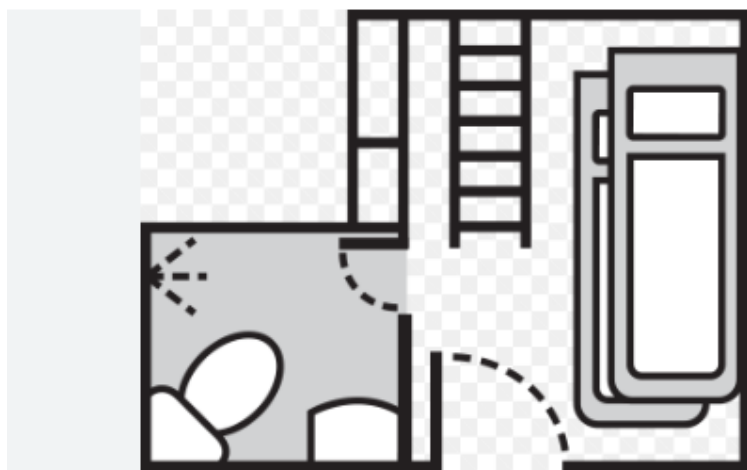
For travellers comfortable with full sightseeing days.

Building on Moderate requirements, these tours feature more activities, extended periods of standing and walking, and nature-based excursions. You must be able to walk confidently over uneven surfaces at a steady pace and negotiate busy transport terminals. Expect feature walks for up to 3 hours, and activities that may include small aircraft, vehicles, vessels and watercraft. Not suitable for travellers requiring walking aids or assistance from others.



Cabin Configuration

Gold Twin: Private en-suite, upper and lower berths (bunks) convert to a three-seater lounge by day; power outlets, in-cabin music channels and journey audio commentary included.



Left: Gold Twin Configuration



Right: Gold Twin by night



Above: Gold Twin by day

FOR MORE FABULOUS VILLA TOURS CALL 08 9754 2026 | TERMS & CONDITIONS APPLY

☎ 08 9754 2026

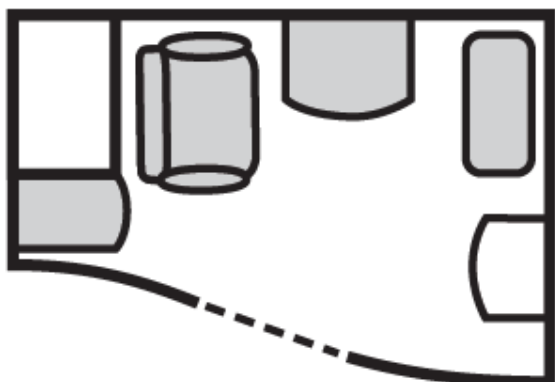
✉ travel@villa.com.au

💻 villa.com.au

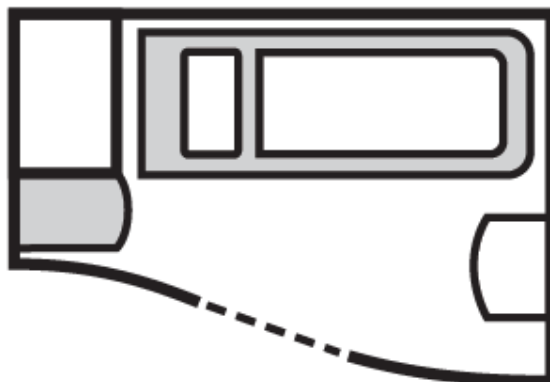


Cabin Configuration

Gold Single: Compact sleeper with seat converting to a bed, basin and mirror, shared shower/toilet at carriage end; power outlets, in-cabin music channels and journey audio commentary included.



Left: Gold Single Configuration by day



Right: Gold Single Configuration by night



Left: Gold Single Configuration by day



Right: Gold Single Configuration by night

FOR MORE FABULOUS VILLA TOURS CALL 08 9754 2026 | TERMS & CONDITIONS APPLY

☎ 08 9754 2026

✉ travel@villa.com.au

💻 villa.com.au

