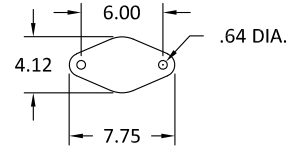
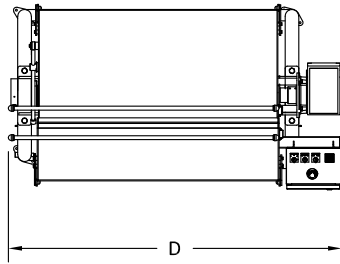
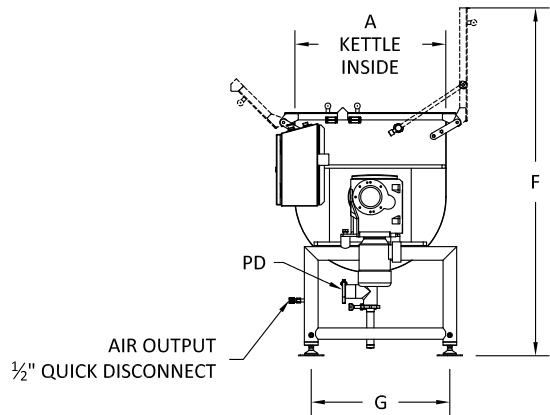
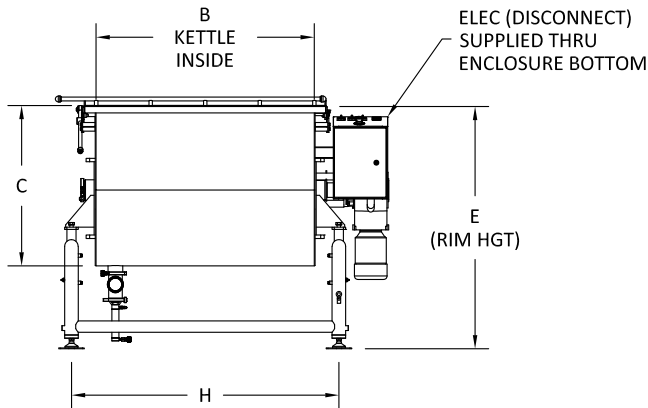


TUCS MODEL TECV-XXXS-PT STATIONARY PACK TANK



FOOT FLANGE DETAIL
(4X)



DIMENSIONS

SIZE (GAL)	A	B	C	D	E	F	G	H
50	24	28	25	58	45	63	27	37
100	28	34	30	62	48	69	28	44
150	30	44	32	68	50	73	31	54
200	33	48	35	74	52	77	32	57
300	38	54	41	82	59	88	41	64
400	42	60	45	89	65	97	41	70

NOTES:

1. SHOWN WITH CONTROL ON RIGHT SIDE. LEFT SIDE AVAILABLE.
2. TILTING FEATURE AVAILABLE UPON REQUEST.
3. COMPRESSED AIR RATING SHOWN FOR KETTLE USE ONLY. INCREASED CFM REQUIRED FOR ADDITIONAL EQUIPMENT.
4. FLEXIBLE CONNECTOR HOSE (36" L) PROVIDED BY TUCS FOR CA AND ALL OPTIONS AS REQUESTED. INSTALLER MUST PROVIDE STAINLESS ELBOWS OR STREET ELBOWS WHEN MAKING FINAL CONNECTIONS.
5. LARGER SIZES AVAILABLE UPON REQUEST.
6. CUSTOMER TO PROVIDE REGULATED WATER PRESSURE NOT TO EXCEED 40-60 PSI.

UTILITY REQUIREMENTS

SIZE	COMPRESSED AIR (CA)			AGITATOR MOTOR MOTOR SIZE	ELECTRIC (ELEC) 3 PH/60 Hz			PRODUCT DISCHARGE PD
	CFM	PSI	SIZE		FLA @ 208V	FLA @ 240V	FLA @ 480V	
50	1	90	1/2" QD	1/2 HP	4.2A	3.7A	1.9A	3" D.C.
100	1	90	1/2" QD	1 HP	6.0A	5.3A	2.6A	3" D.C.
150	1	90	1/2" QD	1 1/2 HP	7.6A	6.6A	3.3A	3" D.C.
200	1	90	1/2" QD	1 1/2 HP	7.6A	6.6A	3.3A	3" D.C.
300	1	90	1/2" QD	2 HP	9.8A	8.6A	4.3A	3" D.C.
400	1	90	1/2" QD	2 HP	9.8A	8.6A	4.3A	3" D.C.

RECOMMENDED CLEARANCES (RIGHT HAND KETTLE)

RECOMMENDED CLEARANCES (RIGHT HAND KETTLE)	
RIGHT SIDE	24"
BACK SIDE	18"
LEFT SIDE	12"