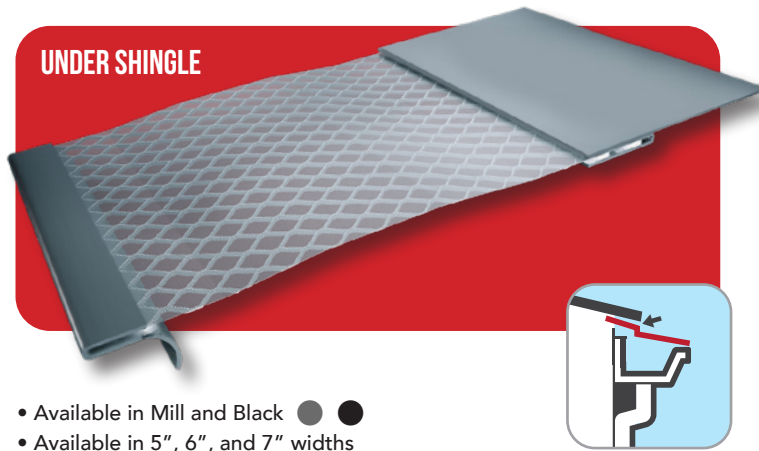




Xtreme Gutter Guard delivers the highest level of micro-mesh protection on the market—engineered with surgical-grade stainless steel mesh and a patented hemmed bonding process that creates a smooth, tight laminate designed for long-term durability. Installed on an angle for optimal self-shedding, Xtreme keeps gutters clear by blocking even the smallest debris while handling extreme water flow with ease. For contractors, this means fewer callbacks, faster installs, and the ability to offer homeowners a superior product at a competitive price.



Material

- **(1)** Surgical stainless-steel micro-mesh
- Standard mesh: .42 opening
- Hi-Flow mesh: .18 opening
- Strong aluminum expanded substrate
- **(2)** Patented hemmed mesh creates a smooth, tight laminate

Opening Design:

- Micro-mesh blocks shingle grit, pine needles, and small debris
- High-Flow mesh option for increased water flow throughput
- Engineered to handle up to 60 gallons of water per minute (GPM)

Profile & Dimensions:

- Available in 5", 6", and 7" configurations
- Designed to be installed at a 5-15° angle for optimal self-shedding
- Low-profile design for a clean roofline match

Installation Options:

- Under-shingle application
- **(3)** Fascia-mount installation secures to both the fascia and gutter lip, creating significantly improved system strength
- Versatile fit with many roofing types

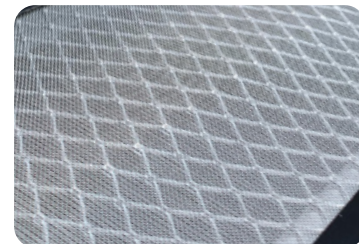
Compatibility:

- Compatible with all Leaf Solution miters
- Compatible with all Leaf Solution endcaps
- Works with standard K-style gutters

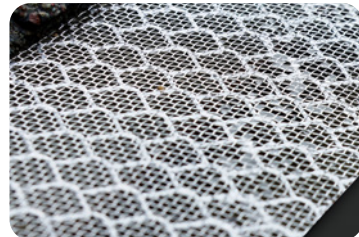
Contractor Advantages:

- Premium performance at competitive pricing
- Fewer warranties and callbacks
- Fast, reliable installation
- Durable in all climates

STANDARD .42 STAINLESS-STEEL MESH



HI-FLOW .18 STAINLESS-STEEL MESH



High-Flow Mesh Option Available

Engineered for heavy rainfall regions and maximum water volume.



UNDER SHINGLE

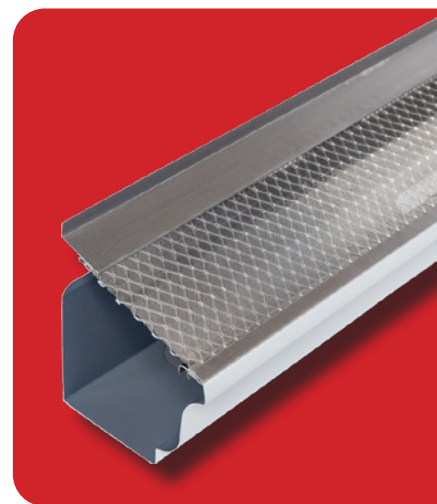
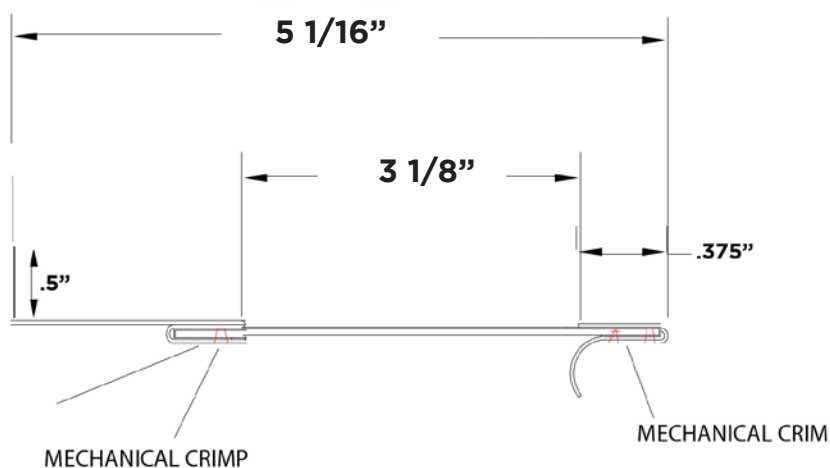


FASCIA MOUNT

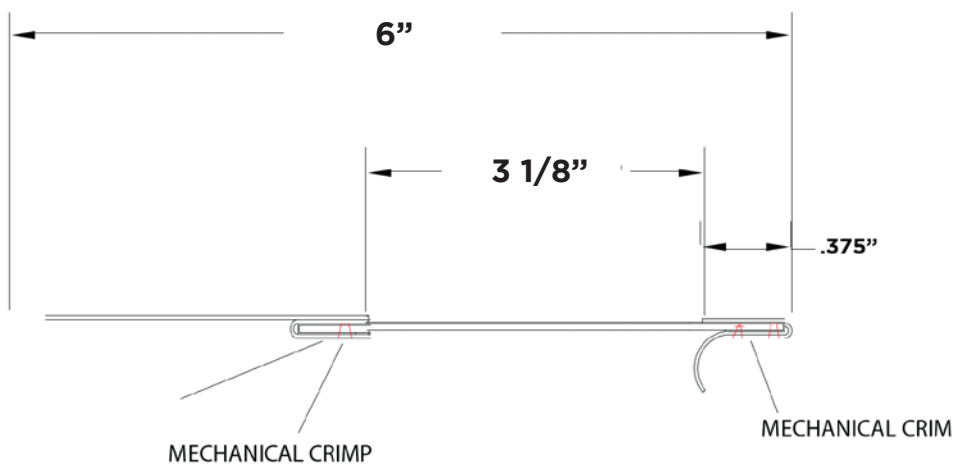
Xtreme gutter guard can be mounted to the fascia or under the shingle.



5" Fascia Mount Specs



5" Under Shingle Mount Specs





UNDER SHINGLE

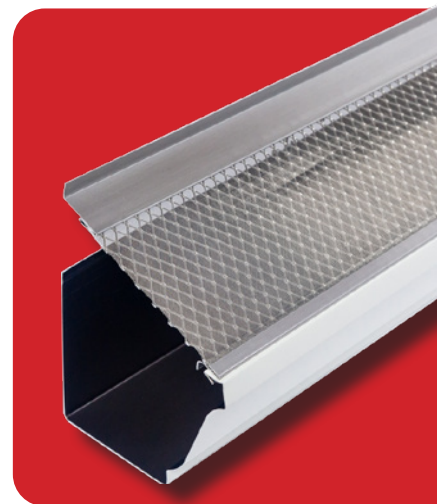
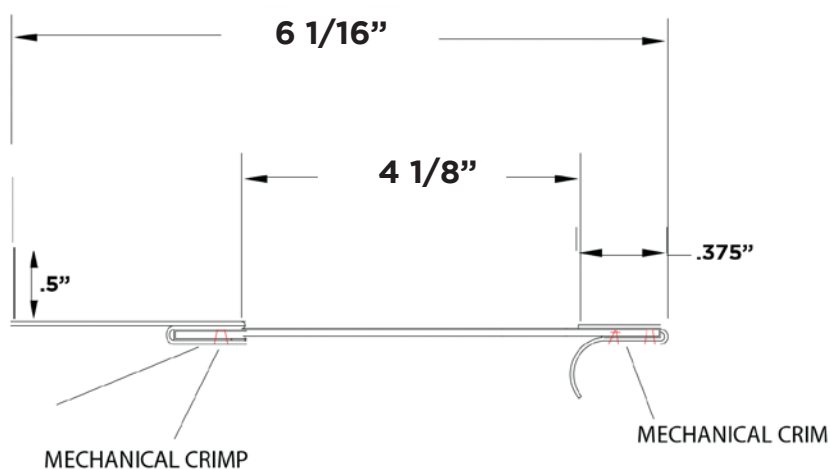


FASCIA MOUNT

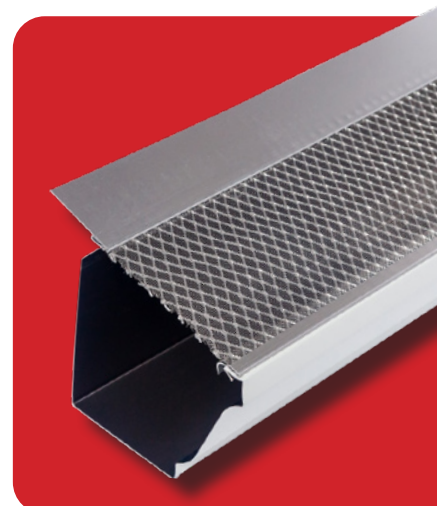
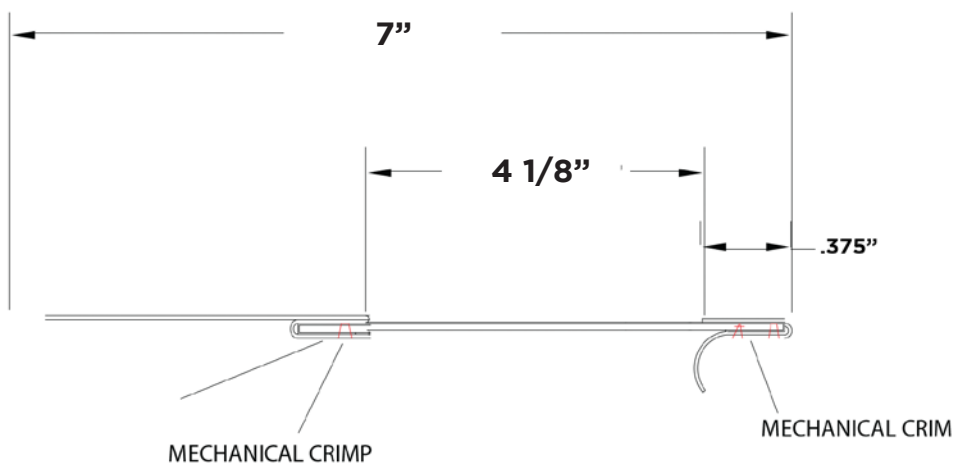
Xtreme gutter guard can be mounted to the fascia or under the shingle.



6" Fascia Mount Specs



6" Under Shingle Mount Specs





UNDER SHINGLE

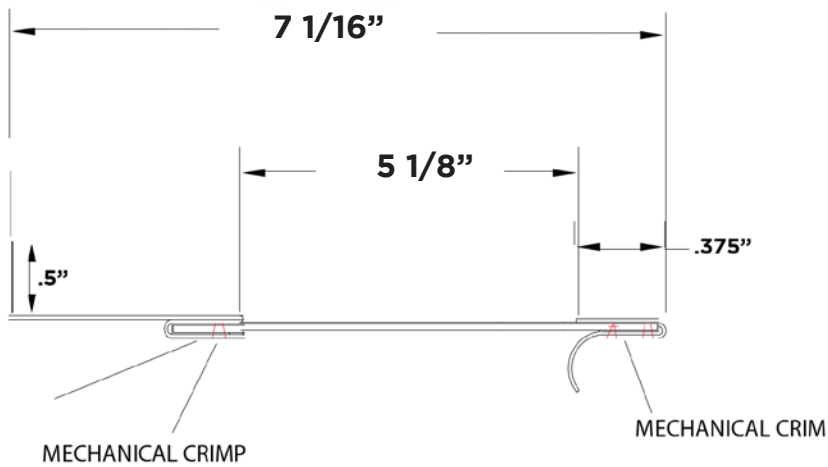


FASCIA MOUNT

Xtreme gutter guard can be mounted to the fascia or under the shingle.



7" Fascia Mount Specs



7" Under Shingle Mount Specs

