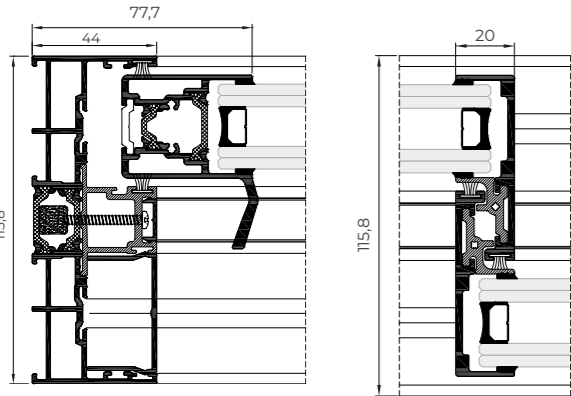


# COR VISION

Thermally broken minimalist sliding system that provides maximum luminosity with a minimal aluminium interlock profile. It has an elegant design only 20 mm sightline and offers the possibility of an inlaid closing system and of hiding the frame along the perimeter.  
Possibility of locking system in the interlock, thus allowing the concealment of the sashes in the frame from a frontal view.



FEATURES		
Transmittance		Uw ≥ 1,3 (W/m²K)
Acoustic insulation		Rw up to 41 dB
Air permeability		Class 4
Water tightness		Class 7A
Wind resistance		Class C5

Reference test 1,23 x 1,55 m / 1 sash + 1 fixed light



- Sightlines**  
Frame 116 mm / 182 mm 3 rails  
Sash 37 mm
- Polyamide Strip Length**  
16 / 24 mm
- Profile Thickness**  
Door 1,7 mm
- Glazing**  
Máx. 30 mm, Mín. 26 mm
- Maximum Sash Dimensions**  
Width (L) 2500 mm, Height (H) 3000 mm
- Maximum Sash Weight**  
320 Kg
- Consult maximum weight and dimensions according to typologies

POSSIBILITIES

ACCESSIBILITY

OPENING POSSIBILITIES

→

←

→

←

←

→

←

→

←

→

→

←

→

←

→

←

→

←

90°

Sliding

Possibility of 1, 2 or 3 rails

Possibility of interior and exterior corner at 90° without mullion

Pocket possibility

- Sliding
- Thermally broken



COR VISION

