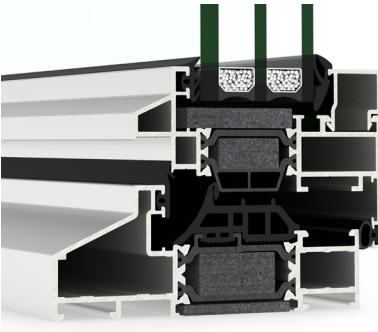


ALU-STEEL

European - Groove
Thermally broken



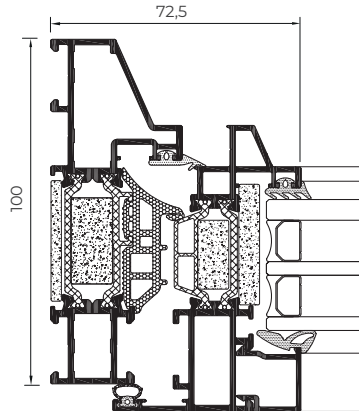
Inspired by classic line designs, the new Alu-Steel system allows to combine aluminium outstanding performances values with a steel-alike appearance. With a sightline of only 72.5mm, Alu-Steel is a the perfect solution for new buildings and refurbishments, offering two different versions, classic or modern.



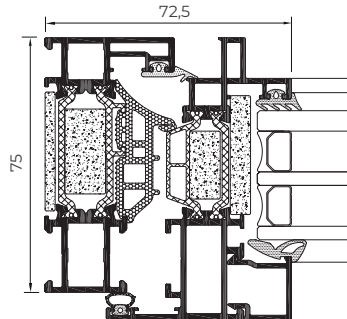
*Classic version



*Modern version



*Classic version



*Modern version

POSSIBILITIES



SECURITY
HARDWARE



CONCEALED
HINGES



CONCEALED
HANDLE

OPENING POSSIBILITIES



Inward Opening

Side hung
Tilt & turn
Tilt only

FEATURES

Transmittance		$U_w \geq 0.83 \text{ (W/m}^2\text{K)}$
Air permeability		Class 4
Water tightness		Class E1200
Wind resistance		Class C5

Reference test 1.23 x 1.48 m / 2 sashes

ALU-STEEL



Sightlines

Modern frame 75 mm
Classic frame 100 mm
Sash 83 mm

Polyamide Strip Length

32-39 mm

Profile Thickness

Window 1,5 mm

Glazing

Max. 54 mm, Min. 20 mm

Maximum Sash Dimensions

Width (L) 1500 mm, Height (H) 2600 mm

Maximum Sash Weight

160 kg

Consult maximum weight and dimensions according to typologies