



## INTEGRAL CONCRETE COLORS



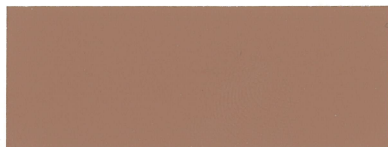
Caramel Buff  
Light 1 Bag/2 Yards



Caramel Buff  
Medium 1 Bag/1 Yard



Caramel Buff  
Dark 2 Bags/1 Yard



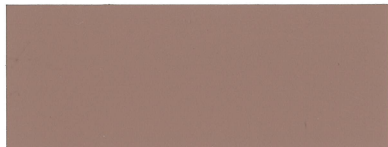
Watermelon  
Light 1 Bag/2 Yards



Watermelon  
Medium 1 Bag/1 Yard



Watermelon  
Dark 2 Bags/1 Yard



Red Barn  
Light 1 Bag/2 Yards



Red Barn  
Medium 1 Bag/1 Yard



Red Barn  
Dark 2 Bags/1 Yard



Chestnut  
Light 1 Bag/2 Yards



Chestnut  
Medium 1 Bag/1 Yard



Chestnut  
Dark 2 Bags/1 Yard



Chocolate  
Light 1 Bag/2 Yards



Chocolate  
Medium 1 Bag/1 Yard



Chocolate  
Dark 2 Bags/1 Yard



Gun Metal  
Light 1 Bag/2 Yards



Gun Metal  
Medium 1 Bag/1 Yard



Gun Metal  
Dark 2 Bags/1 Yard

The colors of raw materials, or a sample strip, is subject to variation from the color chip reproduced above. Colors above are as accurate as can be produced using finest materials of reproduction. Jobsite variations from the above color may occur due to differences in local raw materials and methods of application. Before final color selection is made, a jobsite panel should be erected and approved.



## INTEGRAL CONCRETE COLORS

### THE VALUE OF SURECRETE

With just 6 primary colors, create 18 earth tones inspired by nature. Pigment concentration for each primary color is able to color concrete ranging from 5 to 6 sack mix designs. *Integral Concrete Color* is premeasured and packaged for onsite use, maintaining consistency from batch to batch. All pigments are pure, synthetic iron oxide that remain lightfast and weather-resistant.

### MIXING

- a) Ready-mix source and cement brand for the entire job project should be from the same manufacturer.
- b) All aggregate, fine or coarse, should be supplied from one source and be non-reactive.
- c) The mix design must be consistent from batch to batch.
- d) Concrete slump should not exceed 5". Addition of water throughout the pour will result in variances in color.
- e) Clean the drum before and after mixing.
- f) Add premeasured bag directly into the mixer. Mix 5 - 10 minutes.

### QUALITY CONTROL

It is recommended that a field mock-up panel be prepared for approval of color and finish. Include all materials, tools, and techniques, including reinforcing steel as in the finished product.

### CAUTIONS

#### KEEP OUT OF REACH OF CHILDREN

Not likely to be hazardous as packaged and designed for professional use.

**Inhalation:** Avoid breathing as nuisance dust. Use of NIOSH approved respirator may be required if threshold limit values are unsafe. **Skin Contact:** Skin contact may cause irritation. Remove contaminated clothing and wash affected skin with soap and water. Launder clothing before reuse. If symptoms persist, seek medical attention. **Eyes:** Wear safety eye protection. Contact with eyes may cause irritation. Flush eyes with water for 15 minutes. If symptoms persist, seek medical attention.

### WARRANTY

Warranty of this product, when used according to the directions, is limited to refund of purchase price, or replacement of product (if defective) at manufacturer's/seller's option. SureCrete Design Products shall not be liable for cost of labor or direct and/or no incidental consequential damages.

### TECHNICAL SERVICE

For technical support please contact 352-567-7973.



**LOCAL DISTRIBUTOR**

15246 Citrus Country Drive  
Dade City, FL USA 33523  
352-567-7973  
[www.surecretedesign.com](http://www.surecretedesign.com)