

MAPLEWOOD PLAYHOUSE

young arts conservatory

In Collaboration with Theater and Dance Academy of Wellington

JANUARY 10th, 2026

BEETLEJUICE

JR.

Beetlejuice JR.

Is presented through special arrangement with Music Theatre International (MTI).

All authorized performance materials are also supplied by MTI.

www.mtishows.com

Maplewood Playhouse Young Arts Conservatory

With Theater and Dance Academy of Wellington

Presents



Music and Lyrics by
Eddie Perfect

Dance Arrangements
David Dabbon

Book by
Scott Brown & Anthony King

Based on the Geffen Company Picture, with a story by Michael McDowell & Larry Wilson

Additional Arrangements
Kris Kukul & Eddie Perfect

Orchestrations & Incidental Music
Kris Kukul

Music Producer

Directed on Broadway by
Alex Timbers

Produced on Broadway by
Warner Bros. Theatre Ventures

Langley Park Productions Jeffrey Richards Jam Theatricals

IMG Original Content Rebecca Gold Ben Lowy

James L. Nederlander Warner/Chappell Music Inc. Zendog Productions
in association with

DeRoy Federman Productions/42nd.Club Latitude Link Mary Lu Roffe Terry Schnuck

Marc Bell & Jeff Hollander Jane Bergere Joanna Carson Darren Deverna & Jere Harris

Mark S. Golub & David S. Golub The John Gore Organization Ruth & Steve Hendel

LHC Theatrical Fund Scott H. Mauro Networks Presentations No Guarantees Gabrielle Palitz

Pierce Friedman Productions Adrian Salpeter Iris Smith Triptyk Studios

DIRECTED BY: SEAN GOGAN



Maplewood Playhouse Inc. is a 501(c)(3) tax exempt organization and a Registered Florida not-for-profit corporation. Registration Number CH50207 "A COPY OF THE OFFICIAL

REGISTRATION AND FINANCIAL INFORMATION MAY BE OBTAINED FROM THE DIVISION OF CONSUMER SERVICES BY CALLING TOLL FREE (800-435-7352) WITHIN THE STATE. REGISTRATION DOES NOT IMPLY ENDORSEMENT, APPROVAL, OR RECOMMENDATION BY THE STATE".

ABOUT US

Our Young Arts Conservatory

We are dedicated to working with the younger generation and creating an environment in which they will feel fully comfortable and accepted, so that they can express themselves through the beauty of the arts with acting, singing and dancing!

We understand that growing up can be tough at times, so we want to give every child the ability to find their spotlight.

#STAGESOFGROWTH

With a staff that has over 50 years of combined theater experience, especially working with young actors, we are focused on providing a safe and personalized environment for learning.

#BETTERACTORSBETTERPEOPLE

Through our Young Arts Conservatory (Ages 8-13) and our Teen Productions (Ages 13-18) we offer multiple opportunities every year for kids to be a star and learn all the new and exciting aspects of theater. We want to expose our kids to all aspects of theater not just one.

Previous YAC Shows:

Legally Blonde Jr.
SIX: TEEN EDITION
Finding Nemo Jr.

Mean Girls Jr
The Cat In The Hat
Mary Poppins Jr.

Godspell Jr.
The Little Mermaid Jr.
Frozen Jr.

HADESTOWN: TEEN EDITION
Matilda Jr.
Wizard of Oz
Annie Jr.

Like & Follow Us



Like & Follow Us



www.Maplewoodplayhouse.org
561-657-6400

SONG LIST CON'T

Prologue: Invisible

The Whole "Being Dead" Thing

Ready Set Not Yet

The Whole Being Dead Thing (Part 2)

The Whole Being Dead Thing (Part 3)

Let's Clean Up

Dead Mom

No Reason

Invisible (Reprise)

Say My Name

Day-0 (The Banana Boat Song)

Showtime!

Girl Scout

That Beautiful Sound

What I Know Now

Home (Part 1)

Home (Part 2)

Jump In The Line

"Day-0 (The Banana Boat Song)" Written by Irving Burgie and William Attaway. Published by BMG Gold Songs (ASCAP) obo Caribe Music (ASCAP) and Reservoir Media Music (ASCAP) Reservoir Media Management, Inc. Used by permission. All Rights Reserved.

"Jump in the Line" by Harry Belafonte, Ralph de Leon, Gabriel Oller and Steve Samuel. Published by Clara Music Publishing Corp. (ASCAP). Administered by Next Decade Entertainment, Inc. All Rights Reserved. Used by Permission.

CAST LIST

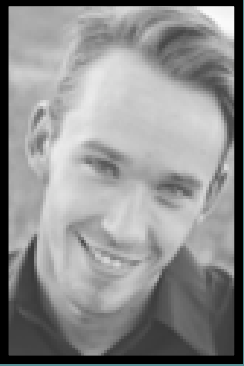
Lydia Maggie Douglas
Charles Ethan Beans
Beetlejuice Jonathan Conner
Adam Nik Edmiston
Barbara Alyssa Gould
Mover 1, Clone 1, Juno, Maxie Dean Lakyn Taylor
Mover 2, Miss Argentina, Mover 3, Tavia Coke
Mover 3, Lawyer 1, Clone 7 Grace Miller
Delia Parker Gross
Maxine, Clone 2 Natalie Webb
Sky 1, Fireworks 1 Violet Segal
Sky 2, Fireworks 2 Ivie Dagostino
Girl Scout 3, Dead bride..... Gianna Riccio
Girl Scout 4, Dead Jockey Alexa Zeien
Scout 5, Dead Mobster Savannah Steele
Girl Scout 6, Dead Parachute 2Giuliana Alessi
Clone 6, Priest..... Beli Gouet
Cheerleader 3, Clone 3, Dead Parachute 1 Rylan Stilley
Cheerleader 4, Clone 4, Toaster Kayla Gould
Clone 5, Otho Kate Costello
Cheerleader 1, Lawyer 2, Dead Cheerleader Penelope Wilson
Cheerleader 2, Lawyer 3, Dead Cheerleader Phoebe Maltas

CREW

Director Sean Gogan	CostumesKim Enright and Nik Edmiston
Assistant Director Kim Enright	Props Kim Enright
Music DirectorJohn Lariviere	Beetlejuice PropsWilmer Colon
ChoreographerBear Brimlow, Luis Guzman	Light DesignMaria Quintana
Sound OperatorMaria Quintana	Lights/Sound Crew Duncan Theater Tech Crew
Playbill Sean Gogan, Kim Enright	Run CrewDuncan Theater Crew
SetSean Gogan, Luis Guzman Jeff Davis, Steve Enright, Jaduke Backdrops	Box Office Luis Guzman
Makeup ArtistMaya Suchy	Company Manager/Founder Sean Gogan
	Artistic Director Kim Enright

CREW'S WHO'S WHO

SEAN GOGAN (FOUNDER/ COMPANY MANAGER)



SEAN GOGAN IS CURRENTLY WORKING PART TIME AT UNIVERSAL STUDIOS ORLANDO AS A STAGE PERFORMER AND WAS FORMALLY IN ENTERTAINMENT THE WALT DISNEY WORLD COMPANY IN ENTERTAINMENT AS A PERFORMER AND WAS FORMALLY IN ENTERTAINMENT AT SEAWORLD ORLANDO. HE ALSO RUNS HIS OWN BIRTHDAY PARTY CHARACTER COMPANY - "MAGICAL MEMORIES CHARACTER EVENTS". HE WAS LAST SEEN IN SOUTH FLORIDA IN MAPLEWOOD PLAYHOUSE'S PRODUCTION OF "THE 25TH ANNUAL PUTNAM COUNTY SPELLING BEE" AS LEAF CONEY BEAR AND GLORY DAYS AS WILL. HE HAS BEEN AN ACTIVE PERFORMER IN THE ARTS SINCE HE WAS OF THE AGE OF TEN YEARS OLD. THIS ARTIST HAS BEEN IN SEVERAL COMMUNITY/ SEMI PROFESSIONAL THEATER PRODUCTIONS AROUND SOUTH FLORIDA TRAINING HANDS ON WITH MULTIPLE DIFFERENT DIRECTORS. A FEW OF HIS CREDITS INCLUDE IN TARZAN THE MUSICAL AS TARZAN, SHREK THE MUSICAL AS DONKEY, MARY POPPINS AS BERT, THE ADDAMS FAMILY AS LUCAS AND OLIVER THE MUSICAL AS BILL SYKES. HE ALSO PLAYED JONATHAN IN TICK...TICK...BOOM, CLAUDE IN HAIR, BAD IDEA BEAR IN AVENUE Q, SGT. FOGARTY/ HARRISON IN CHICAGO AND ROLF IN THE SOUND OF MUSIC. HIS DIRECTING CREDITS INCLUDE: "NOT-SO-GRIMM TALES", "SNOW WHITE AND THE SEVEN DWARFS THE MUSICAL", "THE CAT IN THE HAT" AND "THE LITTLE MERMAID JR.". THIS YOUNG ARTIST IS ALSO A SET DESIGNER

KIM ENRIGHT (ARTISTIC DIRECTOR/ DIRECTOR)



Kim received her theatre training at Wesleyan College and Actor's Workshop and Repertory Company. At Actor's Rep Kim appeared in The Diary of Anne Frank, LuAnn Hampton Lavyer Oberlander and Baby with the Bathwater.

Kim was a Board Member of Actor's Rep and administrator of the children's programs. Kim has been seen on stage in the children's productions of Bigger Than Life, The Big Bad Musical and The Velveteen Rabbit (which she also directed). Kim has also been seen in community theater productions such as Hot L Baltimore and Calendar Girls, as well as a professional production of The Addams Family. Her directing credits include Looking Glass Land, The Velveteen Rabbit and You're a Good Man Charlie Brown for Actor's Rep. In 2011 she started her own company, through which she produced and directed numerous productions including Little Women, Disney's Aladdin, Jr., Disney's Little Mermaid Jr., Beauty and the Beast, Into the Woods, Peter Pan, Tarzan, Oliver, Mary Poppins, Shrek the Musical and Tick Tick Boom. She is currently the Artistic Director at Maplewood Playhouse and her most recent directing credits include Godspell Jr., Frozen Jr. and Matilda Jr. for the Young Arts Conservatory as well as adult professional productions of Glory Days, The 25th Annual Putnam County Spelling Bee, 4000 Miles, Agnes of God, You're a Good Man Charlie Brown and The Last Five Years. For many years, Kim has been an adjudicator at several different district thespian festivals for both the middle school and high school levels as well as having the pleasure of adjudicating at the Florida State Thespian Festival in Tampa.

BEAR BRIMLOW (CHOREOGRAPHER)

LUIS GUZMAN (CHOREOGRAPHER)

MAYA SUCHY (MAKE UP ARTIST)



UP NEXT



AGES 7-18

Seussical JR. is a lively, imaginative musical that brings the beloved world of Dr. Seuss to life on stage. Featuring favorite characters like Horton the Elephant, the Cat in the Hat, Gertrude McFuzz, and the Whos of Whoville, this fun-filled production celebrates creativity, teamwork, and kindness. As Horton courageously protects the tiny Whos and cares for an abandoned egg, young performers explore important themes of friendship, responsibility, loyalty, and standing up for what's right—even when it's hard. With catchy songs, colorful characters, and plenty of opportunities for kids to shine, Seussical JR. is a joyful and meaningful theatrical experience for performers of all ages.

Session Starts/Auditions:

Sunday, JANUARY 25th, 2026

Rehearsals: Sunday's 1:00pm - 5:00pm

SHOW PERFORMANCES:

June 6th, 2026

TIMES: 2:30 pm and 7:00 pm

LOCATION: Duncan Theater at Palm Beach State College

4200 S Congress Ave, Lake Worth, FL 33461

REGISTER AT: www.Maplewoodplayhouse.org, For Full Information

Call: 561-657-6400 for Questions

LIMITED SPOTS LEFT

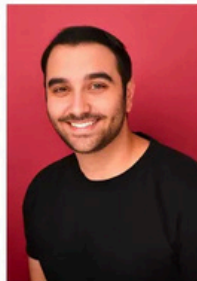
**MAPLEWOOD
PLAYHOUSE**
young arts conservatory



ACTING CLASSES

Michael Materdomini
Instructor

Build confidence and
enhance performance skills
in a fun and supportive environment
No Experience Necessary



AGES 6-10

TUESDAYS
4:00- 5:00
January 20-May
12th
No Class March 17th

AGES 11-15

WEDNESDAYS
6:30-7:30
January 21-May
13th
No Class March 18th

Class Fee

\$350

\$20
Registration Fee



SESSIONS CULMINATE IN A SHOWCASE

You will learn acting technique through instruction, theater
games and exercises, as well as working on scenes and
monologues



TADA of Wellington
3500 Fairlane Farms Rd. Ste 6
Wellington



Contact us for more information

561-657-6400

info@maplewoodplayhouse.org

www.maplewoodplayhouse.org



MAPLEWOOD PLAYHOUSE

young arts conservatory

TEEN PLAY WORKSHOP COLLECTIVE

Bring a Script to Life

Join us for an exciting workshop where you will read, discuss, and revise a new play culminating in a studio performance!

Create, collaborate, and
connect today!

Six Sessions Plus a Performance
All Sessions are Fridays 4:30 - 5:30

February 6 and 20th

March 13th and 27th

April 10th and 24th

Performance May TBA

Workshop Fee \$200.00 plus \$20 Registration Fee

Participation is very limited and by INVITATION

Please scan the QR code to complete the interest form

Play Contains Adult Themes
Participants must be 14-18 years old



Create. Collaborate. Connect.



info@maplewoodplayhouse.org



www.maplewoodplayhouse.org



3500 Fairlane Farms Rd,
Wellington, FL



561-657-6400

SPONSORS



Special Thanks to Sponsors
Law Office of
Christopher W. Rumbold, PLLC
www.cwrlaw.net
&
Compass Community Center