

IMPORTANT!

Dance

JUNE 2026



DANCE IT FORWARD

NEWSLETTER



Did you remember to Enroll for Summer Camps & Classes?

SCHOOL YEAR ENROLLMENT NOW OPEN!

Welcome to our newsletter! We are thrilled to share with you the latest STUDENT INFO in our mission of making a difference with dance in our community. Each month, we'll provide you with the latest updates and important information. Access ALL MONTHLY NEWSLETTERS through the **Student Center**. *The information in this newsletter supersedes any previous content.*

Important Newsletter Contents

- We thank you and curtsy to those who donated on our behalf for GIVE LOVE YORK!
- How to Purchase June Show tickets - Go to <https://appellcenter.org/shows-and-tickets/>
- June Show Donations and Volunteers are still needed - Signup links are included in this newsletter.
- 2026-2027 Season Enrollment now open. Our 56th season!!!
ENROLLMENT WEEK CELEBRATION! HUGE ONE TIME ENROLLMENT PROMO, A \$60 Value!
 Available only this week - June 1-7! Enroll this week and you will receive:
 50% credit off Membership Dues (a \$25 value)
 Free Summer Bonus Class Pass (\$35 value)
Choose: 1 FREE All About ME Camp or 1 FREE Acro or 1 FREE Dance Clinic
- If you pre-ordered flower bouquets to give your dancer(s) - they will be available in the theatre lobby 45 minutes before the show begins and at Intermission (Please pick up by Intermission).
- Awards (Trophy) Pickup - Each performing dancer receives a gigantic trophy award after they perform. They will be available for pick up in the theatre main lobby at intermission and immediately after the show (Not prior to the show)
- We're getting a drinking fountain! Thank you and congratulations, dancers! Those who sold the Subs & Sandwiches to earn their June Show Award, also earned us about \$970 additional which is enough to purchase a new drinking fountain/water bottle refilling station. We are now seeking a plumber or someone who can install our new drinking fountain sometime in July. Please email us if you know anyone who can help with this!!! CS@danceitforward.org.
- Order a June Show DVD - [CLICK HERE](#) to fill out a form online.

| Office Hours | |
|--------------|------------|
| Mon | 4-8 pm |
| Tues | 4-8 pm |
| Wed | 4-8 pm |
| Thr | 4-8 pm |
| Sat | 10 am-1 pm |

HOW TO CONTACT US
 Call or text us at 717-755-MOVE (6683)
 or Email CS@danceitforward.org.
<https://www.danceitforward.dance>

Thank you for reading!



JUNE SHOW TICKETS, DVDS & VOLUNTEERING

June Show Ticket links are included below - Click on the correct show date/time and it will take you to the correct show link to purchase your tickets.

Show #1 - Saturday, 6/6 - 6:00pm

Show #2 - Sunday, 6/7 - 4:00pm

You may purchase tickets on their website <https://appellcenter.org/shows-and-tickets/> or by calling 717-846-1111.

*Be sure to purchase tickets directly from the Appell Center website listed above as there have been reports of people re-selling tickets on other webpages for higher amounts. **Be sure you are using www.appellcenter.org***

IMPORTANT INFORMATION:

- Dancers will stay backstage during each show and will NOT need a ticket. If they are in multiple dances, they will change backstage. Dancers need to wear a nude leotard under all costumes.
- If a parent volunteers backstage as Dressing Room Parent Asst - they will NOT need a ticket either.

AWARDS PICKUP

After you pickup your dancer at Dismissal or at Intermission, please stop by the Awards (Trophy) Pickup table in the theatre lobby.

We hope your dancer loves them! They earned it!!!
Stop by our Backdrop Display and take a photo and tag us on social media **#DanceItForwardUSA**.



VOLUNTEERS ARE STILL NEEDED - PLEASE SIGN UP BELOW

Volunteers are needed for the June Shows at Theatre & In Studio Dress Rehearsals

- If you sign up to volunteer in an area specified as Reh & Show, you won't need a ticket for that particular show.
- Consider Volunteering for the Reh/Show your child is Not performing in. This allows you to watch them perform in from the audience and still volunteer your time and talents to the other students so their parents can watch them.
- If your child is performing in the show you volunteer as a Dressing Room Assistant, you will be able to watch their class dance from a designated area in the back of the theatre/House Right (Security will direct you there).
- Another way to volunteer is at an In Studio Rehearsal or Show your child is not performing in.

Please consider volunteering or donating! Your dancer will love you being involved!

> [SIGNUP to VOLUNTEER to Help the Dancers Backstage at June Show](#) <

> [SIGNUP to DONATE Food & Drinks for Volunteers & Dancers at June Show](#) <

> [SIGNUP to Donate Misc. Supplies for June Show](#) <

VOLUNTEERS BACKGROUND CLEARANCES ARE REQUIRED

- All volunteers must have background clearances on file with Dance It Forward.
- There is NO cost for volunteer clearances.
- If you have a copy of recent background checks from other volunteering positions or from your employer you may email them to cs@danceitforward.org or drop off at the front desk, otherwise click on the links below to start the process now to ensure your background checks are received before your volunteerism occurs.
- You will need to re-submit for current clearances if the one we have on file for you is over 5 years old.

[CLICK HERE FOR > PA Child Abuse History Clearance](#)

[CLICK HERE FOR > State Police Criminal Background Check](#)

The Other Side of Midnight **JUNE SHOW - SHOW #1**

Saturday, June 6th - 6:00pm

Strand Theatre, Appell Center for the Performing Arts

The Other Side of Midnight **JUNE SHOW - SHOW #2**

Sunday, June 7th - 4:00pm

Strand Theatre, Appell Center for the Performing Arts

ACT 1 - Show #1

ACT 1 - Show #2

GYB - Pink Stretch Canvas Ballet Shoe (or Pointe), Pink Tights

Variations (Mon 6:30pm) Ballet - Pink Stretch Canvas Ballet Shoe, Pink Tights

INT Cont/Modern (Tues 4:45pm) - Pink Stretch Canvas Ballet Shoe, Pink Tights

PREP Cont/Modern (Thurs 6:15pm) - Pink Stretch Canvas Ballet Shoe, Pink Tights

ADV Cont/Modern (Thurs 5:30pm) - Pink Stretch Canvas Ballet Shoe, Pink Tights

JR Musical Theatre (Tues 7:00pm) - Black Slip On Jazz Shoes, Black Bootleg Performance Pants, Suntan Tights, Black Leotard overtop Nude leotard

SR Musical Theatre (Tues 6:15pm) - Black Slip On Jazz Shoes, Black Bootleg Performance Pants, Suntan Tights, Black Leotard overtop Nude leotard

Family Dance - Black Sneakers, Jazz or Ballet Shoes, Black Performance Bootleg Pant or Yoga Pant, Black &/or Silver Long Sleeve Top (think Disco like, sequins, etc)

INTERMISSION

ACT 2 - Show #1

ACT 2 - Show #2

Youth Ensemble (Thurs 7:45pm) - Black Slip On Jazz Shoes, Suntan Tights

FWD Dance Company (Thurs 6:15pm) - Black Slip On Jazz Shoes, Suntan Tights

Showtime Combo 4-6 (Tues 6:00pm) - Black Tap Boot Shoe, Pink Tights

Showtime Combo 4-6 (Mon 4:40pm) - Black Tap Boot Shoe, Pink Tights

Showtime Combo 3-4 (Mon 5:30pm) - Pink Stretch Canvas Ballet Shoe, Pink Tights

Showtime Combo 3-4 (Tues 4:45pm) - Pink Stretch Canvas Ballet Shoe, Pink Tights

Showtime Combo 3-4 (Mon 10am) - Pink Stretch Canvas Ballet Shoe, Pink Tights

Pop Hop Combo (Tues 4:40pm) - Black Slip On Jazz Shoes, Suntan Tights

Pop Hop Combo (Mon 6:15pm) - Black Slip On Jazz Shoes, Suntan Tights

Discover Ballet 3-4 (Wed 5:45pm) - Pink Stretch Canvas Ballet Shoe, Pink Tights

FWD Musical Theatre (Tues 6:50pm) - Black Slip On Jazz Shoes, Suntan Tights

Pre-Primary Ballet 4-6 (Wed 6:15pm) - Pink Stretch Canvas Ballet Shoe, Pink Tights

Primary Combo (Wed 5:00pm) - Pink Stretch Canvas Ballet Shoe, Pink Tights

Primary Ballet (Mon 4:45pm) - Pink Stretch Canvas Ballet Shoe, Pink Tights

FWD Pom Squad (Mon 5:30pm) - White Sneakers, Suntan Tights

JR Jazz (Tues 5:30pm) - Black Slip On Jazz Shoes, Black Bootleg Pants, Suntan Tights, Black Leotard overtop Nude leotard

SR Jazz (Thurs 4:45pm) - Black Slip On Jazz Shoes, Suntan Tights, Black Leotard overtop Nude leotard

JR Pom Cheer (Thurs 7:00pm) - White Sneakers, Suntan Tights, Black Boy Cut Shorts, Pom Squad Uniform Top, Black Leotard overtop Nude leotard

SR Pom Cheer (Thurs 7:45pm) - White Sneakers, Suntan Tights, Black Bootleg Pants, Pom Squad Uniform Top, Black Leotard overtop Nude leotard

Breakdance (Wed 6:30pm) - Black Classic High Top Sneaker, **DANCER PROVIDE** - Green SS T-shirt (Crop Top preferred for females), Jeans (ripped preferred), Black Leotard
(DIF Providing - Black Beanie)

PREP Hip Hop (Wed 5:45pm) - Black Classic High Top Sneaker, Black Bootleg Performance Pants, Black Leotard overtop Nude leotard **DANCER PROVIDE** - Bright Pink Crop Top

INT Hip Hop (Wed 7:15pm) - Black Classic High Top Sneaker, Black Bootleg Pants, Black Leotard overtop Nude leotard **DANCER PROVIDE** - Bright Gold Shimmery Top, any style

Adv Hip Hop (Wed 4:30pm) - Black Classic High Top Sneaker, Black Leotard overtop Nude leotard **DANCER PROVIDE** Black Sweatpants & Hooded Sweatshirt (DIF Logo)

JR Crew (Wed 8:00pm) - Black Classic High Top Sneaker, Black Bootleg Performance Pants, Black Leotard overtop Nude leotard, DIF Crew Crop Top

SR Crew (Wed 5:15pm) - Black Classic High Top Sneaker, Black Leggings, Black Leotard overtop Nude leotard, DIF Crew Crop Top

NHSDA Ensemble - Black Slip On Jazz Shoes, Suntan Tights **DANCER PROVIDE** - Jeans, any color or style
DIF PROVIDE - Outfit/hat

REMINDERS: > Wear **HAIR** in Ponytail, unless in Ballet dance, must have hair slicked and bunned (No bangs)
>> **MAKEUP** - All Dancers are encouraged to wear some makeup such as Red/Pink Lipstick, Mascara, Blush (mauve). The stage lights will wash out a dancers face if they do not wear any makeup. PERFORMING COMPANY dancers have required makeup they must wear, specified in the Company Handbook.
>>> **ALL DANCERS MUST WEAR a Nude Camisole Leotard. PLEASE NOTE:** If in multiple dances requiring both Suntan & Pink tights - Wear Suntan Tights under the Nude Camisole Leotard, pull Pink Tights Overtop. Dancers in multiple dances will need a Quick Change Basket to keep shoes, tights, etc at the side stage quick change area. **Please Label Everything.**





IMPORTANT DANCER INFORMATION

In-Studio Dress Rehearsals – What to Bring & What To Expect

Arrival Instructions:

- Dancers should arrive at Dance It Forward in their first costume.
- Bring all additional required items (shoes, tights, etc.) as listed in the Detailed June Show Information on the previous page.

Division-Specific Guidelines

Commercial & Ballet Divisions:

- If your dancer is in a class receiving a lent costume, please arrive wearing a nude camisole leotard plus all items listed on the **June Show 2026 -Details** Information sheet.
- The borrowed costume pieces will be provided at each rehearsal and show.

Early Childhood Division:

- Performance costumes will be handed out in class the week of May 11–14, which is also Visitors' Wk.
- Dancers should wear their costume to the studio for the rehearsal.

Multiple Dances & Quick Changes ~ If your dancer is in more than one routine in the same show:

- Bring a small basket, bucket, or cube to hold their next costume(s), tights, and shoes.
- All costume changes will happen backstage as quick changes with the help of volunteers.
- Label all items clearly with your dancer's name.
- *Tip: Dollar Tree offers affordable baskets/buckets/cubes that work well!*



Important Reminders

- Label everything your dancer brings – for both dress rehearsals and shows.
- Volunteers Needed! You may also volunteer at a show your child is not performing in – your help is greatly appreciated OR Parents may volunteer as Dressing Room Parent Assistants during their child's show. *You'll be able to watch your child's performance from a designated area in the back of the theatre.* We truly cannot do this without volunteers – Thank You!

JUNE SHOW 2026 REHEARSAL SCHEDULE

Early Childhood indicated in Green



SATURDAY, MAY 30 – STUDIO DRESS REHEARSAL

Act 1 & Commercial section in Act 2 for BOTH 6/6 & 6/7 SHOWS

11:45am

Arrival: GYYB & NHSDA

12:00–12:45pm

Warm-Up: GYYB & NHSDA & Meeting: Volunteer Informational Meeting for anyone volunteering at the June Shows (Studio B)

1:00pm

Arrival: Act 1 Dancers (Full run-through with quick changes)

↳ Act 1 Dancers: NHSDA, GYYB, Variations, Contemporary/Modern (Adv/Int/Prep), Musical Theatre (Jr/Sr)

1:15–3:45pm

Act 1 Dress Rehearsal: All Act 1 Dancers

2:30pm

Arrival: Family Dance for Rehearsal 2:45–3:45pm

3:45–4:15pm

Break: (Dancers in both Acts will have a break to “fuel up & hydrate”: bring non-messy snacks & clear drinks)

4:15pm

Arrival: Act 2 Commercial Dancers (Only those NOT in Act 1)

4:30–6:30pm

Act 2 Studio Dress Rehearsal (Commercial Classes Only - NO Early Childhood classes)



MONDAY, JUNE 1 – STUDIO DRESS REHEARSAL

Early Childhood Section for Show #1 6/6 Show ONLY

4:45pm

Arrival: NHSDA & Student Assistants (Warm-Up and prepare EC arrival)

5:15pm

Arrival: Show #1 Early Childhood Classes

Show #1 Dancers are:

- Youth Ensemble (Thurs 7:45pm), FWD Dance Company (Thurs 6:15pm), Showtime Combo 4-6 (Tues 6:00pm), Showtime Combo 3-4 (Mon 5:30pm), Pop Hop Combo (Tues 4:40pm), Discover Ballet 3-4 (Wed 5:45pm), Pre-Primary Ballet 4-6 (Wed 6:15pm), Primary Ballet (Mon 4:45pm)

5:30–7:30pm

Dress Rehearsal: Early Childhood Section for 6/6 Show ONLY

(If you are a Student Assistant for EC classes please be here to assist. All NHSDA members should be present also)

7:45–8:15pm

Meeting: All Student Assistants, Faculty, and NHSDA Mandatory following this Rehearsal



TUESDAY, JUNE 2 – STUDIO DRESS REHEARSAL

Early Childhood Section for Show #2 6/7 Show ONLY

4:45pm

Arrival: NHSDA & Student Assistants (Warm-Up and prepare EC arrival)

5:15pm

Arrival: Show #2 Early Childhood Classes

Show #2 Dancers are:

- Youth Ensemble (Thurs 7:45pm), FWD Dance Company (Thurs 6:15pm), Showtime Combo 4-6 (Mon 4:40pm), Showtime Combo 3-4 (Tues 4:45pm), Showtime Combo 3-4 (Mon 10:00am), Pop Hop Combo (Mon 6:15pm), Primary Combo (Wed 5:00pm), FWD Pom Squad (Mon 5:30pm), FWD Musical Theatre (Tues 6:50pm)

5:30–7:30pm

Dress Rehearsal: Early Childhood Section for 6/7 Show ONLY

(If you are a Student Assistant for EC classes please be here to assist. All NHSDA members should be present also)

7:45–8:15pm

Meeting: All Student Assistants, Faculty, and NHSDA Mandatory following this Rehearsal



WEDNESDAY, JUNE 3 – STUDIO COMPANY REHEARSAL & LOAD UP, 3524 E MARKET ST.

Company & Volunteers

5:30pm

Arrival: Company warmup and rehearsal

Dancers are:

> (Company: GYYB, Hip Hop Crew, NHSDA)

6:00–8:00pm

Studio Rehearsal: Company (not a dress rehearsal)

6:00–7:30pm

LOAD UP Truck at Studio

Load Up Box Truck - dance floor, floor tape, lent costing and rolling racks, donations, detailing items, lobby display, etc



THURSDAY, JUNE 4 – LOAD IN & SET UP @ APPELL CENTER, 50 N. GEORGE ST.

Staff & Volunteers

5:30pm–8:30pm

Staff & Volunteers LOAD in at APPELL Center

Load In at Theatre - unload Trucks > No Drops, Projection used in these shows

> Load costuming to Lower Level & MPR Dressing Rooms > Load Flooring/tape/etc > Post signs on Dressing Rooms, etc

THEATRE REHEARSALS & SHOW DETAILS

JUNE SHOW 2026



1. ARRIVAL / DISMISSAL INFORMATION ON THE THEATRE

- All Dancers & Volunteers Check-In at the Philadelphia St. Appell Center Studio Entrance door – 50 N. George St, York.
- Recommended Parking: Philadelphia St garage.
- **Do not just pull up to the curb.**
- Dancers need to arrive in their first costume.
- Bring all required items: shoes, tights, etc. If your class is being lent a costume, please arrive in the listed items such as a Nude camisole leotard, and items you were asked to provide on the detail sheet.
- Please take photos of your dancer(s) before dropping them off or after picking them up.
- **MAKEUP** – All Dancers are encouraged to wear some makeup such as Red/Pink Lipstick, Mascara, Blush (mauve). The stage lights will wash out a dancers face if they do not wear any makeup. PERF CO Has required makeup they must wear, specified in the Company Handbook.



2. CHECK-IN IDENTIFICATION SYSTEM

EARLY CHILDHOOD DIVISION

- Parent/guardian will receive an Index Card with your dancer(s) name and should be used at pickup to claim their EarlyCh dancer.
- The Early Ch dancer(s) will also receive a wristband to be worn on their wrist at all times while at the theatre.
- **NOTE:** > *If they are in more than one dance, they will have a 2nd, different color wristband placed on their same wrist to designate they will have a costume change during this show.*

COMMERCIAL & BALLET DIVISION

- Parent/guardian will be given an index card with their dancer(s) name.
- This card must be returned at pickup to claim your dancer.



3. DISMISSAL

- To reduce crowding, dismissal occurs from 2 locations. Your dancer's dismissal area is reminded at check-in.

MAIN LEVEL DISMISSAL

Early Childhood Dancers

- Assigned to the Main Level (Multi-Purpose Room)
- Dismissed through the Philadelphia Street Lobby, accessed from house RIGHT lower door, then through a hallway.

LOWER LEVEL DISMISSAL

Commercial & Ballet Dancers (ages 7+)

- Assigned to Lower Level Dressing Rooms
- Dismissed through the house LEFT lower door, which leads to the main theatre lobby near concessions.

~ Please Note: If you are picking up dancers from both areas, you may take your time. We suggest you pickup your Early Childhood aged dancer first. Faculty and volunteers will remain with the dancers until they are picked up.



4. DISMISSAL IDENTIFICATION

EARLY CHILDHOOD DIVISION

- Only one parent/guardian with the Index Card should claim the dancer.
- Then meet others elsewhere in the theatre. We suggest in the Lobby.
- There will be a photo backdrop to use in photos in the main Lobby.

COMMERCIAL & BALLET DIVISION

- Only one parent/guardian should pick up the dancer, bringing the index card received at check-in.
- Then can proceed out to the main lobby to meet up with family and friends that came to support them.

*IMPORTANT-IF YOU DID NOT WATCH THE SHOW

If you are only arriving at dismissal – be sure to keep the Index Card handed to you at Check-In and show it at the Main Theatre Lobby Doors on N. George St. at dismissal (approx 815pm on 6/6) or 615pm (on 6/7). Don't come to Phila St.



5. AWARDS

- All awards (trophies) will be in the Lobby and can be picked up at Intermission or AFTER the Show (not before).
- There will be a designated person taking the dancer name and handing you the award.
- Please do not just take an award without giving the dancer name. This ensures everyone receives their award.



6. COSTUME CHANGES

- Dancers in multiple routines in the same show that wear BOTH Suntan & Pink tights – Please wear SUNTAN tights under the Nude camisole leotard; Wear the PINK tights over the camisole leotard. This makes for easier quick changes.
- Bring a labeled basket/bucket/cube with all labeled costume items, shoes, tights, and accessories.
- Most costume changes are quick changes and will take place sidestage or backstage with Quick Change Volunteers.



7. WHAT TO BRING FOR THE SHOW

- Disposable water bottle (recommend the 8oz) labeled with their name.
- *Please Note: Snacks (pretzels or animal crackers) are provided to the dancers backstage at the shows. Early Childhood dancers receive these snacks after they perform right in their dressing room on the Main Level/MPR.
- **BALLET & COMMERCIAL DANCERS** who are at the theatre for extended periods of time should pack a bagged lunch/snack bag with healthy foods. (Hard boiled eggs, fruit, bagel, cheese, veggies, non-messy finger foods are best.)
- Having everything in a disposable bag is much easier. Clear liquids are preferred so spills don't stain costuming.
- *Pack plenty of drinks, there isn't time to leave the bldg. All dancers will eat in designated areas on the Lower Level.



8. IMPORTANT REMINDERS

- It will be crowded, and we have all of these procedures in place for the safety of the children.
- We ask for your patience and positive attitudes during dismissal. You can meet up with family/friends outside or in the theatre lobby but the theatre itself should be vacated after the show.
- Please save Flowers or Gifts for your Dancer AFTER the show. There is not space in the dressing rooms for them.
- *Dancers that are in a Performing Company may be dismissed last. Lower Level Dismissal (House Left hallway).*



THE SCHEDULES FOR THEATRE DRESS REHEARSAL & SHOWS ARE LISTED ON OUR ONLINE CALENDAR

JUNE SHOW 2026 SCHEDULE at APPELL CENTER

Appell Center, Strand Theatre • 50 N. George St., York, PA

SHOW #1



SATURDAY, JUNE 6 • SHOW #1 THEATRE DRESS REHEARSAL FOR SATURDAY SHOW @ APPELL



STAFF & VOLUNTEERS

9:30am–10:30am

- Any final SET UP Volunteers, Admin/Faculty (Hang Signs Setup Phila St Lobby/Check In or anything not finished at Load In on Thurs, June 4th)



MORNING SCHEDULE

10:00 am

- GYB & NHSDA DANCER ARRIVAL & Check In at Phila St door
- Place belongings in Dressing Rm and report to warmup

10:30 am–11:00 am

- GYB & NHSDA Warmup Class in Theatre Inner Lobby

11:00 am–11:15 am

- Quick changes set

11:15 am–12:30 pm

- GYB Company & NHSDA Dress Rehearsal, Staging/Spacing
**Setting Light Cues / Projection*

12:00 pm

- ACT 1 DANCER ARRIVAL & Check In at Phila St door –
 - Act 1 Dancers - Cont/Modern & Variation classes (Family Dance arrives at 1:00pm)**Get into costumes and settled into dressing room.*
**Variations – report to stage immediately to space/stage their piece.*



ACT 1 REHEARSAL & DISMISSAL

12:45 pm–2:45 pm

- Act 1 Dress Rehearsal - Straight thru with Quick Changes

1:00 pm

- ARRIVAL & Check In at Phila St door - **Family Dance**, performs end of Act 1

2:00 pm

- ARRIVAL & Check In at Phila St door - **Act 2 Dancers**, some may already be at theatre (NOT Early Childhood Classes, they arrive 5:15pm.)

2:45 pm

- DISMISSAL of **Family Dance** DISMISSAL (Adults and Early Childhood class age dancers dismiss and return for the show 5:15pm)



IMPORTANT NOTES

- Please keep your Index Card from Check In.
- Stay hydrated, eat healthy snacks, and get plenty of rest.
- All dancers will eat in designated areas.
- Pack a disposable water bottle.



Please check the Online Calendar for additional details and any updates.

[CLICK HERE TO VIEW THE ONLINE CALENDAR](#)

2:45 pm–3:00 pm

- CREW & DANCER BREAK

3:00 pm

- DISMISSAL of those dancers ONLY in ACT 1 that are not in company- Must return by 5:00pm.
(Those in GYB only in Act 1 should stay at theatre during Act 2 rehearsal)



ACT 2 REHEARSAL

3:00 pm–5:00 pm

- Act 2 Dress Rehearsal - Straight thru w/Quick Changes
(without EC age dancers. EC Entrance/Exits will be rehearsed with Student Asst/NHSDA)



PRE-SHOW PREP

5:00 pm–5:15 pm

- Main Close, Clean Dance Floor - Reset all for Show at 6pm

5:00 pm

- ARRIVAL/Recheck-In of those dancers that were only in ACT 1 and left theatre at 3pm (not company)

5:15 pm

- ARRIVAL & Check In at Phila St door - **Early Childhood Classes** and **Family Dance** at Theatre

5:00 pm–5:30 pm

- CREW & DANCER BREAK

Dancers should Hydrate, eat a snack, rest, etc.

(All Dancers - NOT EC - should pack a bagged lunch with disposable drink bottle, healthy snacks/fruit/sandwiches - Not Messy subs or greasy foods)

5:15 pm

- Theatre Opens
**Clean Dance Floor behind Main*



SHOW TIME

6:00 pm
SHOW #1

8:15 pm–8:30 pm (approx.)

- Show Dismissal



DISMISSAL INFORMATION

Main Level – House Right

- All Early Childhood Dancers will be dismissed from Main Level/Check In Area near Phila St Door. *(from House Right).*
- One Parent/Guardian should report to the Lower House Right door with the Index Card given to them at Check In and line up along the wall inside the theatre, a DIF rep will open that door when Dismissal begins.

Lower Level – House Left

- All other dancers who were in the Lower Level Dressing Rooms will be dismissed from the House Left Hallway.
- One Parent/Guardian should report to the Lower House Right door with the Index Card given to them at Check In and line up along the wall inside the theatre and a DIF rep will open that door when Dismissal begins.

**Since those dancers are in BOTH Shows, if the parent/guardian with the Index Card did not have tickets to watch this show, they should arrive at the front of the theatre around 8:00pm (for the Sat, 6/6 show) and enter through that main lobby entrance and report to the Left Hallway.*

- You can ask an Appell Center representative to guide you there if you are unsure where to proceed.



THANK YOU!

Your cooperation helps keep the day running smoothly and ensures the best experience for all our dancers!

Version #3 - 5.27.26

JUNE SHOW 2026 SCHEDULE at APPELL CENTER

Appell Center, Strand Theatre • 50 N. George St., York, PA

SHOW #2



SUNDAY, JUNE 7 • SHOW #2

THEATRE DRESS REHEARSAL FOR SUNDAY SHOW @ APPELL



10:30 am

GYVB & NHSDA DANCER ARRIVAL & Check In at Phila St door
Place belongings in Dressing Rm and report to warmup



11:00–11:30 am

GYVB & NHSDA Warmup Class on stage



11:30–11:45 am

GYVB Company & NHSDA Rehearsal, Quick changes set



11:30 am

ARRIVAL & Check In at Phila St door - Act 1 & Act 2 Dancers
(NOT Early Childhood Classes or Family Dance, they arrive 3:15pm.)



12:00 pm–3:00 pm

ENTIRE SHOW Dress Rehearsal (Both Act 1 & Act 2) - straight thru w/Quick Changes
(Not EC Dancers or Family Dance, but we will rehearse EC Entrance/Exits
with Student Asst/NHSDA)



3:00–3:30 pm

BREAK - Dancers should Hydrate, eat a snack, rest, etc.
(All Dancers - NOT EC - should pack a bagged lunch with disposable
drink bottle, healthy snacks/fruit/sandwiches - Not Messy subs or greasy foods)



3:30 pm

Dancers touch up hair and makeup and be in First Costume
(if in multiple dances, reorganize Quick Change bin/bucket to ensure
ready for show)



3:00–3:15 pm

Main Close, Clean Dance Floor - Reset all for Show at 4 pm



3:15 pm

ARRIVAL & Check In at Phila St door - **Early Childhood Classes**
and **Family Dance** at Theatre
3:15 pm - Theatre Opens (Clean Dance Floor behind Main)



4:00 pm

SHOW #2



6:15–6:30 pm

Show Dismissal (this time is approx.)

1 EARLY CHILDHOOD DANCERS: All Early Childhood Dancers will be dismissed from Main Level/Check In Area near Phila St Door. (from House Right). One Parent/Guardian should report to the Lower House Right door with the Index Card given to them at Check In and lineup along the wall inside the theatre, a DIF rep will open that door when Dismissal begins.

2 LOWER LEVEL DANCERS: All other dancers who were in the Lower Level Dressing Rooms will be dismissed from the House Left Hallway. One Parent/Guardian should report to the Lower House Right door with the Index Card given to them at Check In and lineup along the wall inside the theatre and a DIF rep will open that door when Dismissal begins.
*Since these dancers are in BOTH Shows, if the parent/guardian with the Index Card did not have tickets to watch this show, they should arrive at the front of the theatre around 6:00pm (for the Sun, 6/7 show) and enter through that main lobby entrance and report to the Left Hallway. You can ask an Appell Center representative to guide you there if you are unsure where to proceed.



6:30–8:30 pm

Load Up/Load Out immediately following this Show,
return all items back to Dance It Forward.

WE NEED VOLUNTEERS. PLEASE SIGN UP ONLINE.

Enroll NOW!


SUMMER 2026

&

SCHOOL YEAR 2026-2027

Confidence. Strength. Joy.
That Moves You Forward.



 June 15 – August 6



ENROLL NOW & RECEIVE



FREE DANCE BAG
*when you enroll in
Happy Feet Early
Childhood Academy*



FREE POMs
*when you enroll in
Pom Squad & Cheer!*



EXCEPTIONAL TRAINING
*in a supportive, inspiring
environment.*

SUMMER OPEN HOUSE DATES



Wed., July 29
4–6 pm



Tues., Aug 4
1–3 pm



Sat., Aug 22
1–3 pm

DANCE IT FORWARD

WWW.DANCEITFORWARD.DANCE

Audition Announcement

AUDITION FOR OUR COMPETITION DANCE TEAM!
FORWARD FORCE DANCE TEAM
OPEN TO AGES 6+



ENROLL UNDER EVENTS: JUNE 17.

COMPETITION DANCE TEAM AUDITIONS

hip hop
jazz
pom
contemporary

AUDITIONS!
JUNE 17

FORWARD FORCE
DANCE TEAM

COMMAND. THE. STAGE.

*DANCE IT
FORWARD*

FF Dance
Team will
rehearse on
Tuesdays
and a few
TBA
Saturdays

2-4
competitions
Jan-April

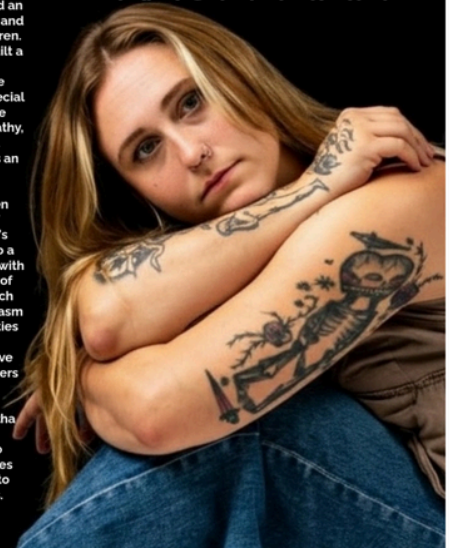
Team Director
Samantha
Kauffman

SAMANTHA KAUFFMAN

Samantha is a dedicated professional, a mother of five, and an advocate for creating supportive and enriching environments for children. Her husband and herself have built a loving and safe home for our biological, foster, and adoptive children, including those with special needs. These experiences have strengthened her patience, empathy, and resilience—qualities that transfer directly into her work as an educator and leader.

From a young age, she has been deeply rooted in the world of competitive dance. Samantha's background has shaped her into a fair, driven, and educated leader with a consistent and high standard of professionalism. She brings much creativity, discipline, and enthusiasm to her students, and these qualities are reflected in their growth, success, and through the positive feedback she receive from dancers and their families.

For the 2027-28 season, Samantha will be investing time into our community. Ms. Sam is able to instruct in a wide range of genres and levels. She is very excited to begin this new journey with us.





DANCE IT FORWARD FORWARD FORCE

DANCE TEAM

AUDITION SUBMISSION PACKET



AUDITIONS WILL BE HELD ON **JUNE 17**



AUDITION FOR AGES 9 AND UNDER: 2:00 – 3:00 PM
AUDITION FOR AGES 10+: 3:00 – 4:30 PM

To better align with industry expectations, we are asking all participants to provide the following items. You will be asked to hand these items to the audition monitor upon your assigned audition call time.

SUBMISSION REQUIREMENTS

- **Headshot:** We encourage you to provide a clear, recent photo, such as a school portrait or a high-quality “snapshot” taken against a neutral background. The goal is simply to have a current likeness of the performer for our reference and records. (A “professional” headshot is not required)
- **Pre-existing conflicts:** A print out stating all known dates your dancer may be unable to attend class or mandatory events.
- **Resume “About Me”:** OPTIONAL: This page should be typed and organized attached to the back of your headshot. Be sure to include your name, age, and contact, training & experiences. Feel free to cover additional accomplishments and favorable moments. Share details about who you are personally. List your “special skills”.
- Finally – share a list of things you wish to learn, see or do this upcoming dance season.

AUDITION GUIDELINES & ETIQUETTE



PUNCTUALITY & PREPAREDNESS:

Arrive at least 30 minutes before your scheduled time to complete registration and warm up.

Ensure all required materials (headshot, resume, and typed list of conflicting dates) are organized and ready upon arrival.

Bring plenty of water and healthy snacks to fuel your body throughout the audition process.



AUDITION APPEARANCE: HAIR & CLOTHING:

All participants should have hair secured up & out of face. Select an audition outfit that fits your personality and works for a broad range of styles. You do not need to be in full ballet attire.

No distracting jewelry.

Bring ALL proper dance shoes!



AUDITION EVALUATION:

We will be looking at you doing various styles of dance.



MOST IMPORTANTLY:

Maintain a focused, respectful, and positive attitude toward staff and fellow dancers at all times and HAVE FUN!!!



We are so excited to see you shine!

THANK YOU FOR CHOOSING DANCE IT FORWARD WITH FORWARD FORCE!



CONTACT: CS@DANCEITFORWARD.ORG | WWW.DANCEITFORWARD.DANCE

Kickstars! have already been invited to perform at the Governor's Mansion! Let's go!

NEW

STARTING THIS SUMMER!

NEW



Performing Dance Group For Adults

Starting July 13

Mondays 7:15-8 pm

UPCOMING PERFORMANCES

Mark your calendars—big things are on the horizon!

DANCE IT FORWARD PRESENTS

THE NUTCRACKER

FEATURING THE GREATER YORK YOUTH BALLET

DETAILS COMING SOON!

THE HIP NUT

YOUR ONE & ONLY HIP NUT!

DETAILS COMING SOON!

MORE INFORMATION: CS@DANCEITFORWARD.ORG
WWW.DANCEITFORWARD.DANCE