



# DESIGN & SPECIFICATIONS

<https://build.perpetualhomesadu.com/>





# PERPETUAL Homes





# PERPETUAL Homes



# TABLE OF CONTENTS

EXTERIOR.....	7	INTERIOR.....	30
6-12 Roof Pitch.....	8	Doors and Trim.....	31
Roof Shingles.....	9	Chandeliers.....	33
Eaves and Eyelid (Door).....	10	Pendant Lights.....	34
Exterior Siding.....	12	Lavy Lights.....	35
Exterior Gable Detail.....	16	Baseboards.....	36
Exterior Paint.....	17	Crown Molding.....	37
Porch & Decking.....	18	Ceiling Lights.....	38
Exterior Doors.....	21	Ceiling Fan.....	41
Exterior Windows.....	23	Interior Paint.....	42
Exterior Lights.....	29	Fireplaces.....	43

Note: All option words are clickable and link to their exact pages.  
Please download the file to be able to click on the words.



# TABLE OF CONTENTS

WALL.....	45	Hardware.....	73
Ship Lap Wall & Wall Panels.....	46	Kitchen Sink.....	74
CEILING.....	49	Kitchen Countertop.....	78
Recessed Ceiling.....	50	Kitchen Backsplash.....	87
FLOORING.....	51	APPLIANCE PACKAGE.....	97
Standard Linoleum.....	52	Whirlpool Package.....	98
Vinyl Plank Flooring Upgrade.....	53	Best Whirlpool Package.....	105
Carpet.....	56	Kitchen Aid Package.....	106
KITCHEN.....	61	BATHROOM.....	109
Standard Cabinets.....	62	Shower Enclosures.....	110
Upgraded Cabinets.....	63	Shower Upgrade.....	112

Note: All option words are clickable and link to their exact pages.  
Please download the file to be able to click on the words.



# TABLE OF CONTENTS

Shower Surround.....	113	Bathroom Countertop Sample.....	136
Bathroom Mirror.....	115	Bathroom Accessories.....	138
Bathroom Sink.....	120	Vanity Lights.....	139
Bathroom Tub.....	122	CARRIER.....	140
Shower Pan.....	123	Thermostat.....	141
Ceramic Tile Shower.....	124	ELECTRIC WATER HEATER.....	149
Vinyl Shower Tile.....	125	ELECTRIC FURNACE.....	150
Standard Shower System.....	126	Perpetual Homes Standard Specs.....	152
Upgrade Shower System.....	131	EXTERIOR GUTTERS.....	155
Moen Fixtures.....	132	Thank you!.....	156
Vanity Faucet.....	135		

Note: All option words are clickable and link to their exact pages.  
Please download the file to be able to click on the words.



# EXTERIOR

# EXTERIOR: Roof

6-12 Roof Pitch





**EARTHTONE CEDAR**



**DUAL GREY**



**DUAL BLACK**

# EXTERIOR: Eaves



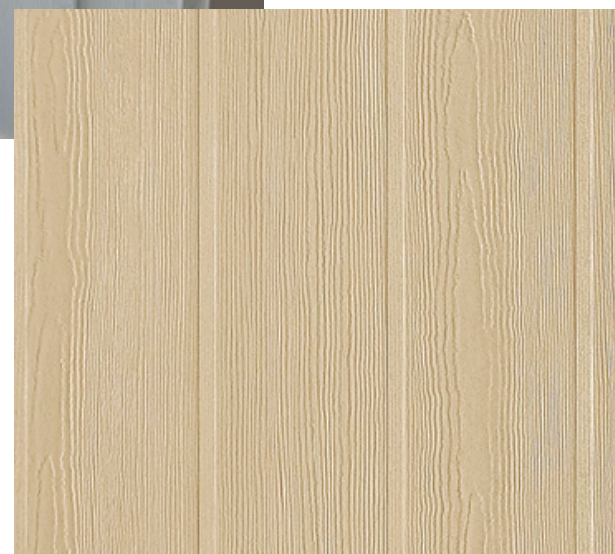
# EXTERIOR: Eyelid over Door



# EXTERIOR: Siding



Board & Batten



Lap Siding



# EXTERIOR: Upgraded Siding



# EXTERIOR: Siding

White Rapid



Cascade slade



Aspen ridge



# EXTERIOR: Siding

Smooth - stucco look siding



# EXTERIOR: Gable Detail



# EXTERIOR: Paint



Admiralty PPG1042-7



At The Beach PPG12-28



Black Magic PPG1001-7



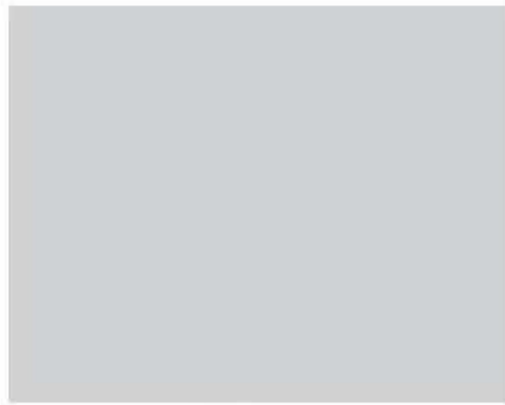
Commercial White PPG1025-1



Portabella PPG15-32



Dover Gray PPG1001-5



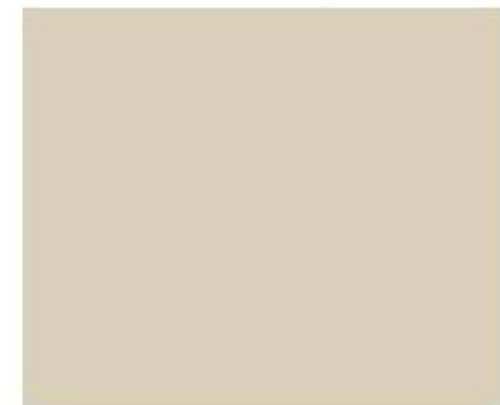
Elemental PPG1011-2



Evergreen Boughs PPG1129-7



Ghost Writer PPG1007-3



Toasted Almond PPG1097-3



Gray Frost PPG1012-4



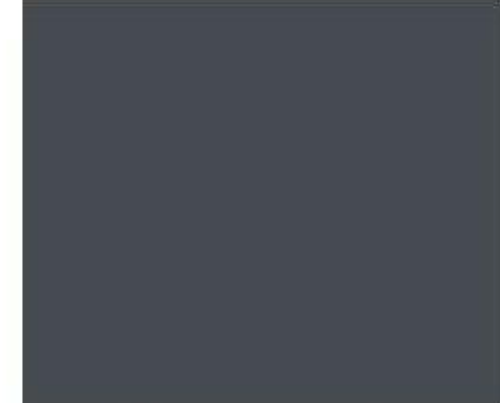
Irresistible PPG1094-1



Knight's Armor PPG1001-6



Linen Ruffle PPG1075-1



Witchcraft PPG1037-7

# FIBERON PORCH DECKING



**BEACH HOUSE**



**BUNGALOW BROWN**

# EXTERIOR: Deck

**INNOVATIVE DESIGN**

PERPETUAL HOMES **INTEGRATED DECK SYSTEM**

A Smarter Way to Add Outdoor Living to Factory-Built Homes

**Fast Installation** | Ships with the home and flips down into place with no complex builds or delays.

**Built to Last** | No-maintenance wood-free design with a durable, powder-coated aluminum frame for long-term performance.

Available in two colors ▶




- Optional stairs available
- Homeowners can expand using matching, off-the-shelf composite decking and aluminum railing.
- **Available Sizes:** 6' x 8' and 6' x 12'

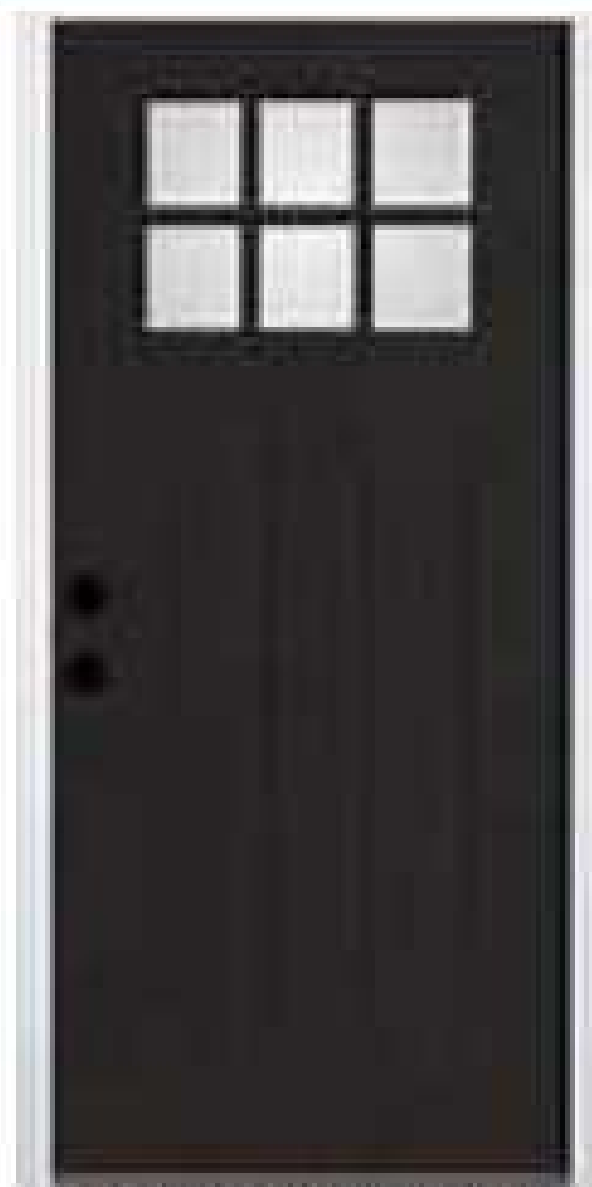
# EXTERIOR: Front Porch



# EXTERIOR DOORS



**CRAFTSMAN 1/4  
LIGHT W/6 LIGHT  
GRIDS  
(STANDARD)**



**CRAFTSMAN 1/4  
LIGHT WITH 6  
LIGHT GRIDS  
(OPTION)**



**FULL LIGHT WITH 15  
LIGHT GRIDS**



**FULL LIGHT  
WITH MINI  
BLINDS**

# EXTERIOR DOORS



**PANEL 1/2 LIGHT WITH  
MINI BLIND  
(STANDARD)**



**PANEL 1/2 LIGHT  
WITH 9 LIGHT GRIDS**



**FULL LIGHT WITH  
MINI BLIND**



**6 PANEL**



**FULL LIGHT WITH  
15 LIGHT GRIDS**

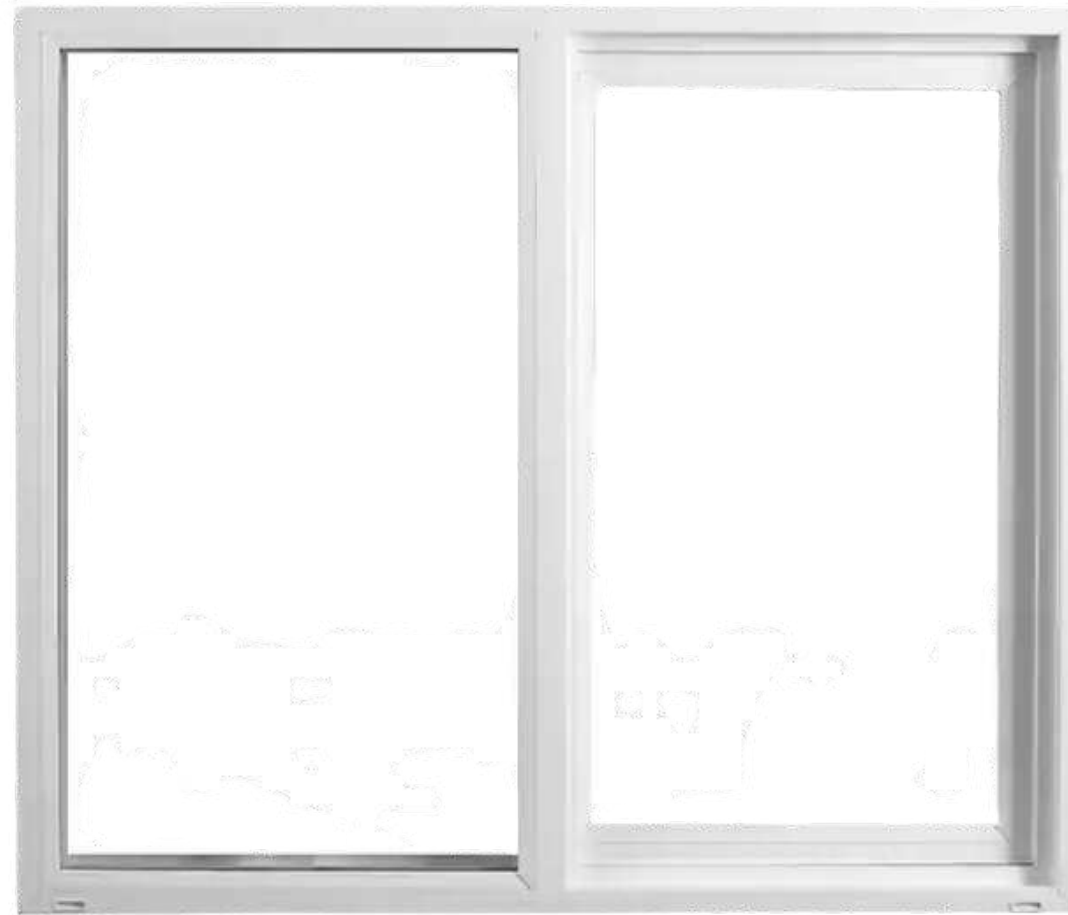
# EXTERIOR: Front Doors



# EXTERIOR: Windows



White Vinyl Windows with Screens



Black Windows

# EXTERIOR: Windows



\*Extruded black vinyl window with white interior reveal.

# EXTERIOR: Black Windows



# EXTERIOR: Windows



# EXTERIOR: Windows





**PORCH STANDARD  
6" RECESSED LED LIGHT**



**CARRIAGE  
PORCH LIGHT**



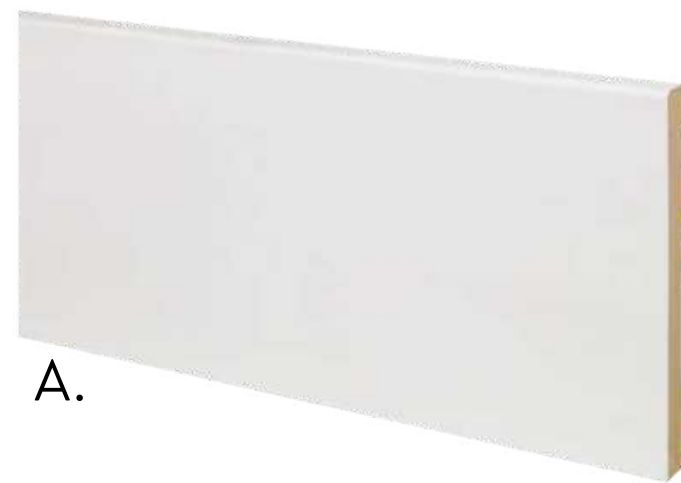
**GILDED MATTE BLACK  
PORCH LIGHT**



**FARMHOUSE  
PORCH LIGHT**



# INTERIOR



5 1/4" Baseboard



B.



Interior Doors: 2 Panel 6'8" or 8'



Brushed Nickel Lever Door

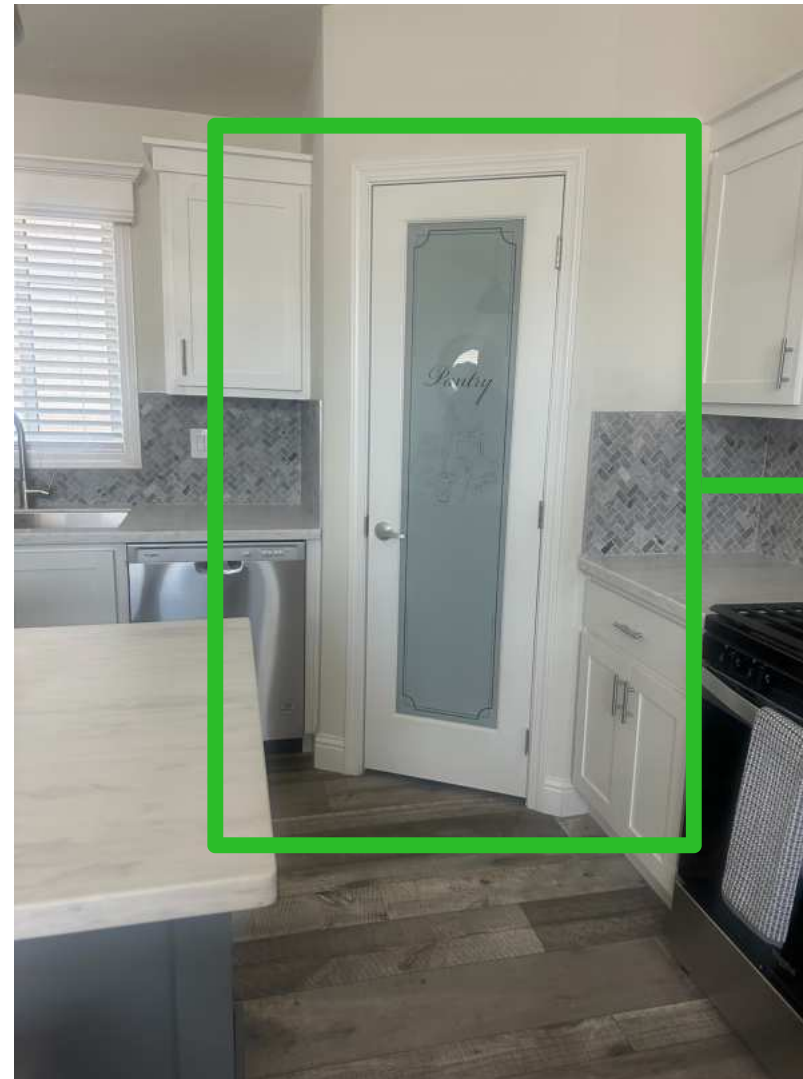


Door knobs



4 1/4" Crown Moulding

# INTERIOR: Doors



# CHANDELIERS



**BRUSHED NICKEL  
5LT CHANDELIER**



**MATTE BLACK 5LT  
CHANDELIER**



**DRIFTWOOD 5LT  
CHANDELIER**



**10" VINTAGE PENDANT LIGHT**

Available in

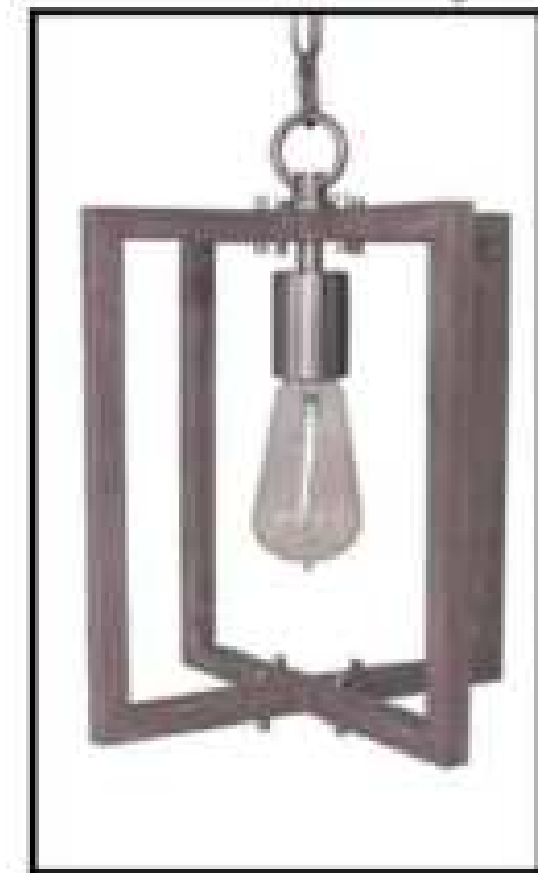
**Brushed Nickel & Black**



**PENDANT LIGHT WITH  
SEEDED GLASS**

Available in

**Brushed Nickel & Black**



**DRIFTWOOD  
PENDANT LIGHT**



**2-LIGHT TORCH LAVY LIGHT**

Available in

**Brushed Nickel & Black**



**DRIFTWOOD 2-LITE  
TORCH LAVY LIGHT**

# INTERIOR: Baseboards



Flat Baseboard

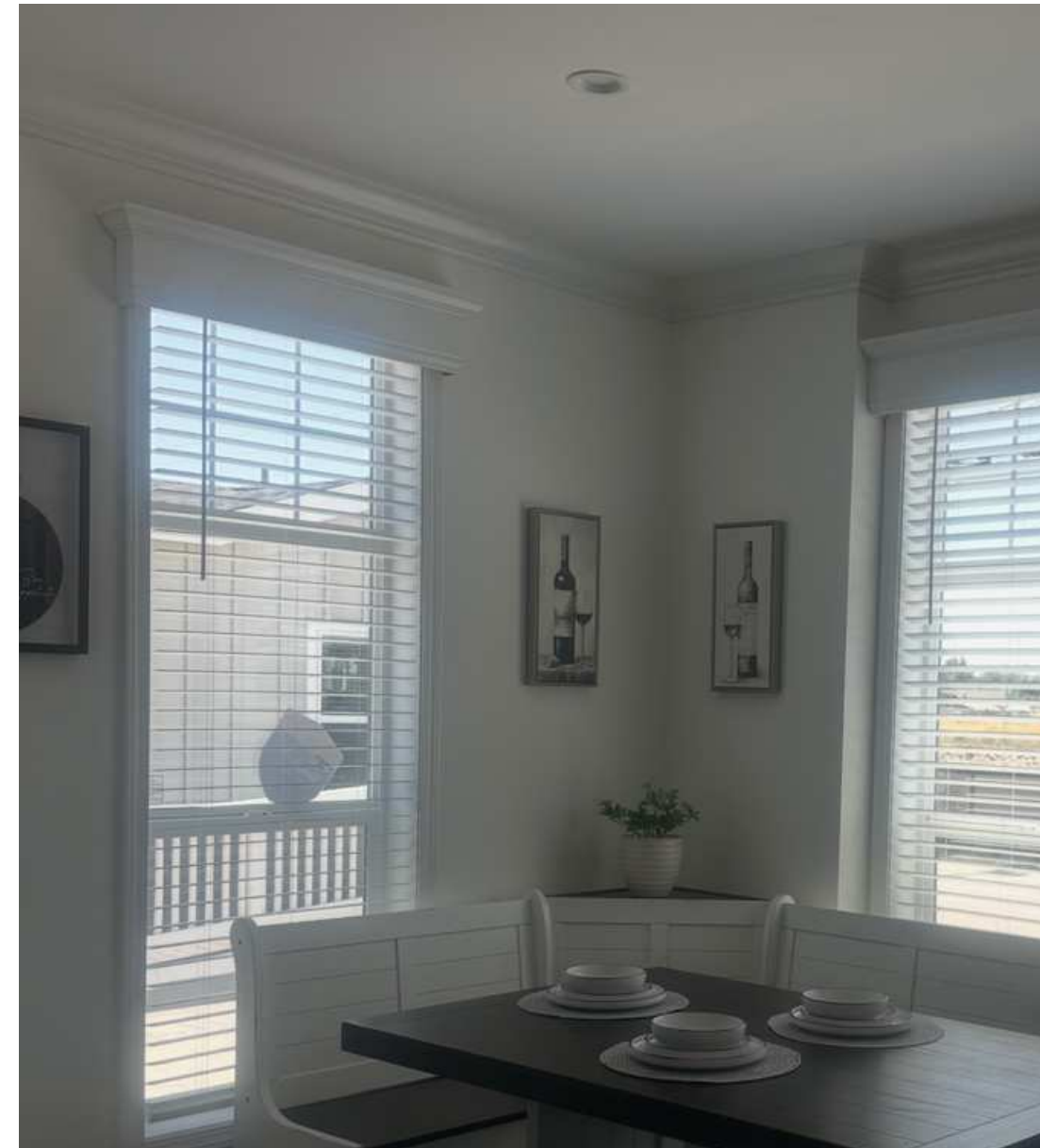


Traditional Baseboard

# INTERIOR: Crown Moldings



Flat Crown Molding



Traditional Crown Molding



**STANDARD 4" RECESSED LED LIGHT**



**CEILING LIGHT EXTRA**

Available in Brushed Nickel & Black

# INTERIOR: Ceiling Lights



Standard 4"  
Recessed Light



Upgrade 6"  
Recessed Light



Upgrade  
Brushed Nickel



Upgrade Black

Solar Tube





**BRUSHED NICKEL CEILING FAN**

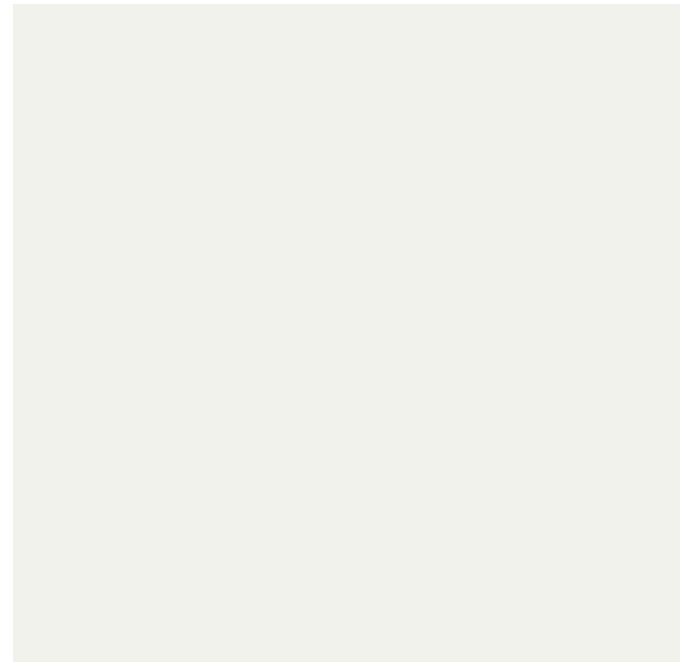


**BLACK CEILING FAN**

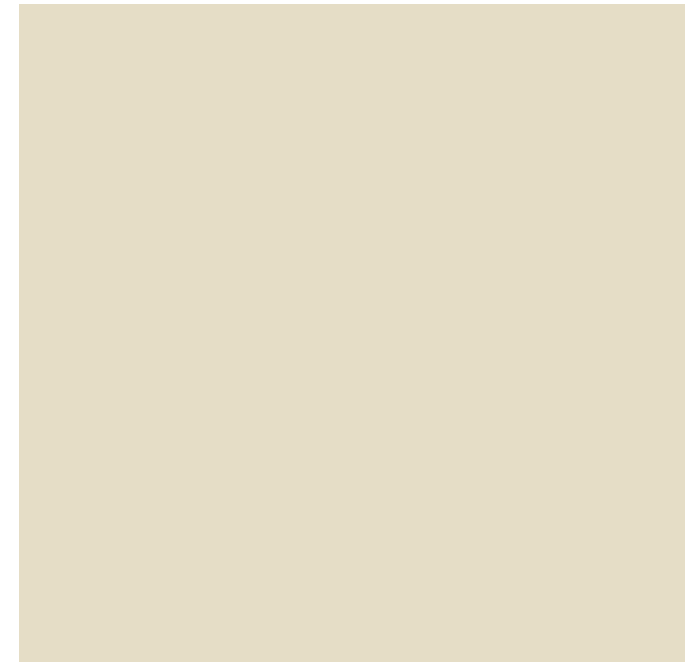


**DRIFTWOOD CEILING FAN**

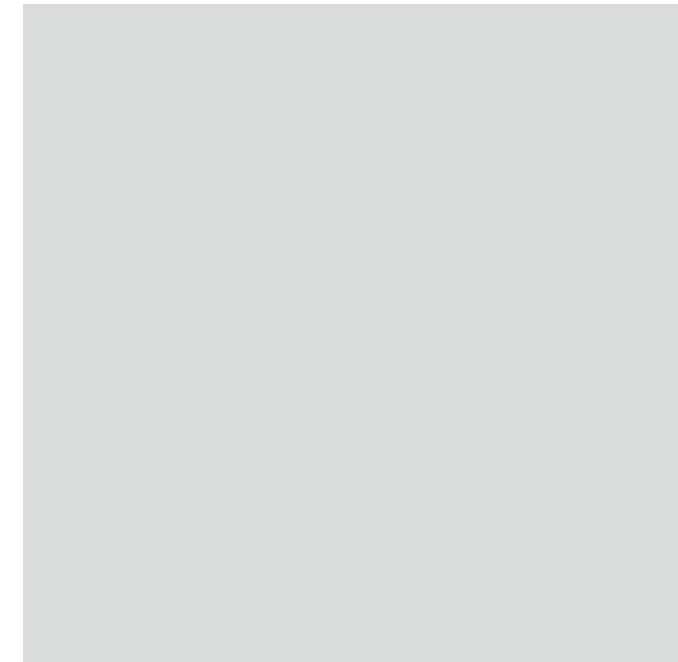
PPG Paint  
Walls, Ceiling, & Trim



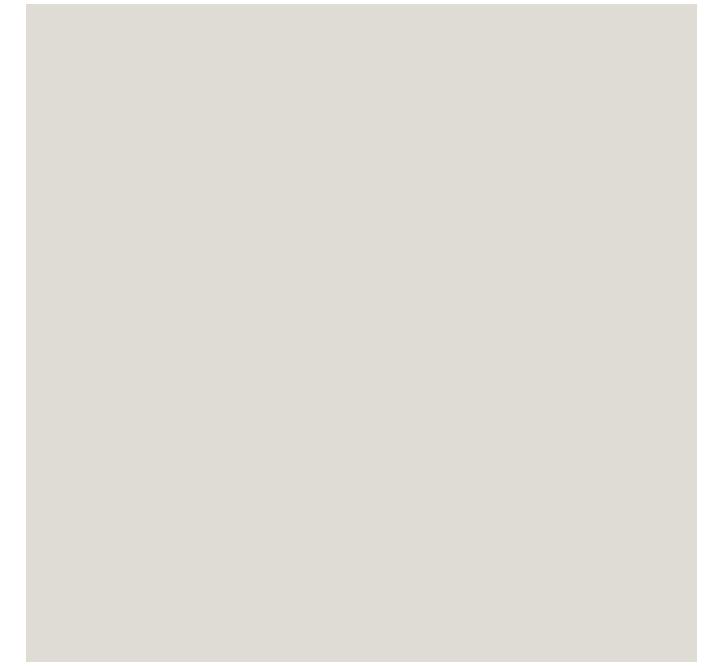
Commercial White



Irresistible



Thin Ice



In the Cloud

# INTERIOR: Fireplaces



# FIREPLACE OPTONS



**GAS FIREPLACE**



**WOOD BURNING FIREPLACE WITH HEARTH**



**ELECTRIC FIREPLACE**



# WALL

## White Shiplap Wall

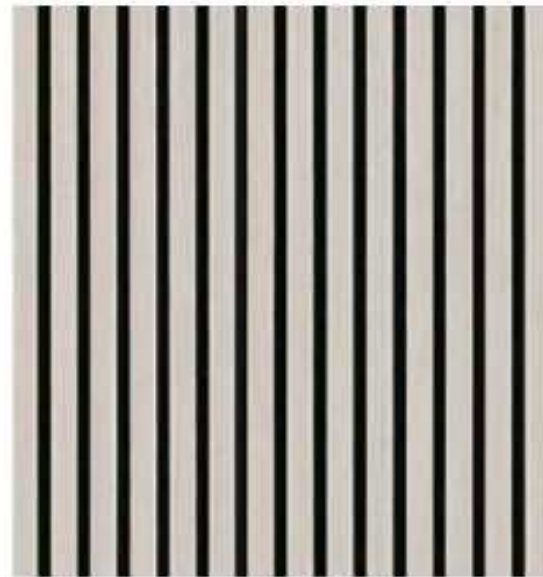
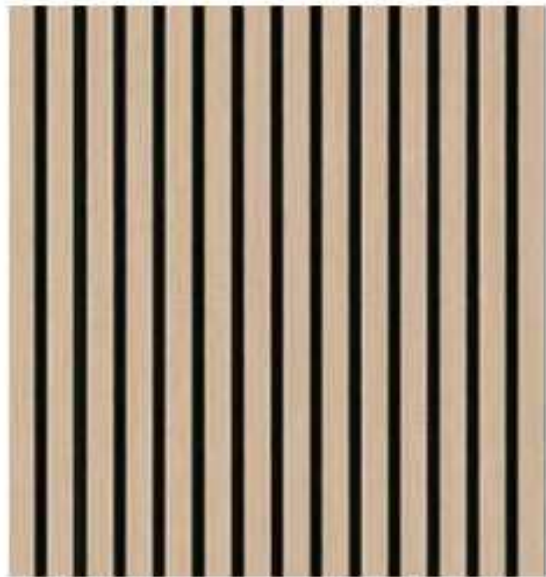




ACOUSTIC WOOD SLAT COLLECTION

## ACOUSTIC WOOD SLAT COLLECTION

Acoustic Wood Slat Panels offer a serene and cozy ambiance in various shades, ranging from warm beige to rich browns, without the need for staining or sanding. Featuring a sophisticated 3D fluted design, they combine elegance with functionality, crafted from natural wood on an acoustic fiber pad to effectively absorb sound. Ideal for spaces like living areas, meeting rooms, and offices, these panels seamlessly integrate as both decorative elements and effective sound solutions. Easy to install with screw-to-stud mounting, each box includes black screws, catering to homeowners and businesses seeking a stylish yet acoustic-friendly environment.



**Blonde Acoustic Wood Slat Panels**

WPNL-ACWFLTBLO9.5X94.5

**Ebony Acoustic Wood Slat Panels**

WPNL-ACWFLTEBON9.5X94.5

**Fog Acoustic Wood Slat Panels**

WPNL-ACWFLTFOG9.5X94.5

**Natural Acoustic Wood Slat Panels**

WPNL-ACWFLT NATU9.5X120  
WPNL-ACWFLT NATU9.5X94.5

**Tawny Acoustic Wood Slat Panels**

WPNL-ACWFLT TAWN9.5X120  
WPNL-ACWFLT TAWN9.5X94.5

**Umber Acoustic Wood Slat Panels**

WPNL-ACWFLT UMBE9.5X120  
WPNL-ACWFLT UMBE9.5X94.5

**Collection:** Acoustic Wood Slat

**Finish:** Misc

**Size:** 9.5 x 94.5.

**Style:** Fluted, Wood

**Color:** Beige, Black, Brown, Gray-Light

**Material Type:** Wood

**Size Category:** Mosaic



# CEILING

## Recessed Ceiling





# FLOORING

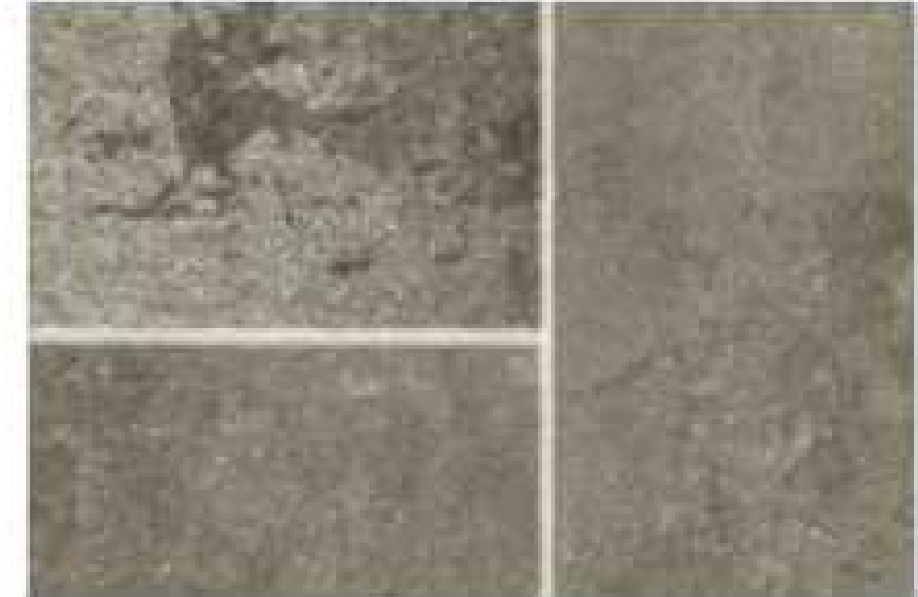
# STANDARD - LINOLEUM



**STONEWASHED**



**COUNTRY ROADS**



**HIGHWAY**



**NATURAL 9656**



**NORDIC WHITE 9662**

# LAMINATE UPGRADE - ALPHA LAMINATE



**FIRENZE**



**SERENGETI**



**KENYA**

# LAMINATE UPGRADE - ALPHA LUX VINYL PLANK FLOOR



AMERICAN WALNUT



MALTA

# LAMINATE UPGRADE - ALPHA LUX VINYL PLANK FLOOR 2



**FITZROY**



**KINGS**

# CARPET Standard Ormond 18oz Carpet



**MUSHROOM**



**FOSSIL**

**SKYLINE**

# CARPET

## Standard Ormond 18oz Carpet



**SILVERSMITH**



**MOCHA LATTE**



# CARPET Upgrade Cape Canaveral 25oz Carpet



**TREE BARK**



**POTTERY**

**SKYLINE**

# CARPET

## Upgrade True Spirit 38oz Carpet



**CITY SPACE**



**CONCRETE**

**SKYLINE**

# CARPET

## Upgrade True Spirit 38oz Carpet



**COTTAGE**



**LADY LIBERTY**



**TRUFFLE**

**SKYLINE**



# KITCHEN

# STANDARD CABINET OPTIONS



**Shaker  
Butternut**



**Shaker  
Espresso**



**SHAKER  
CRESCENT WHITE**



**SHAKER  
URBAN GREY**



**SHAKER  
IN THE NAVY**



**SHAKER  
BLACK SATIN**



**SHAKER  
MATTE WALNUT**



**CAMDEN  
CRESCENT WHITE**



**CAMDEN  
BUTTERNUT**



**CAMDEN ESPRESSO**

# KITCHEN: Cabinet Doors & Drawers



# KITCHEN: Cabinet Doors & Drawers



\*Crescent White Cabinet over Charleston



\*Glass Cabinet



\*White Cabinet

# KITCHEN: Microwave Tower



# KITCHEN: Cabinet Doors & Drawers



# KITCHEN: Cabinet Doors & Drawers



# KITCHEN: Junior Kitchen Area



# KITCHEN: Cabinet Doors & Drawers



Standard cabinet height\*\*

# KITCHEN: Cabinet Doors & Drawers

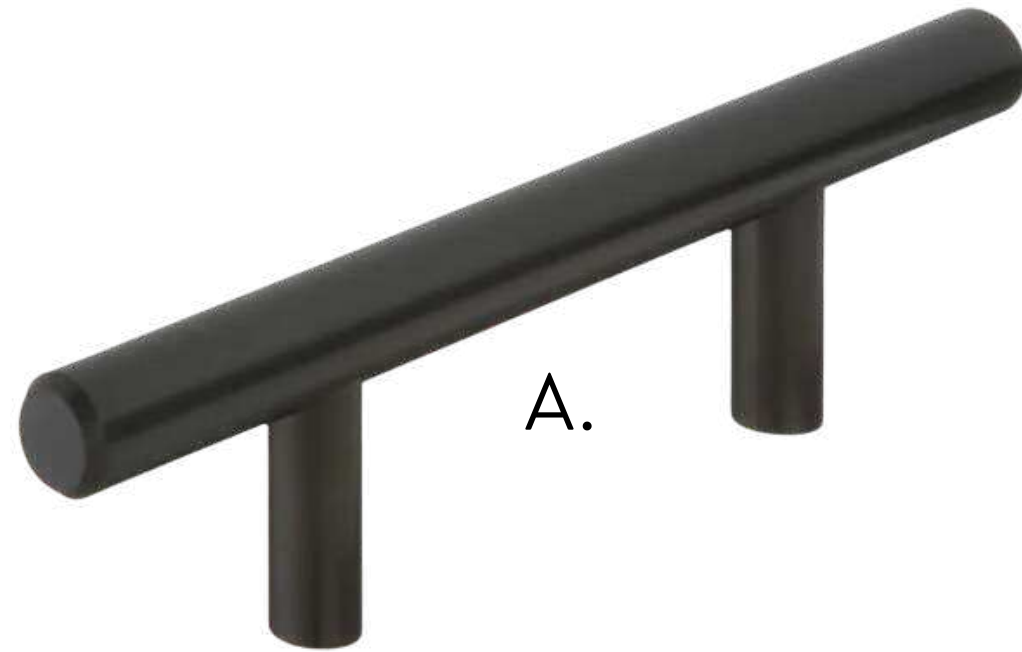


\*\*Taller Cabinet

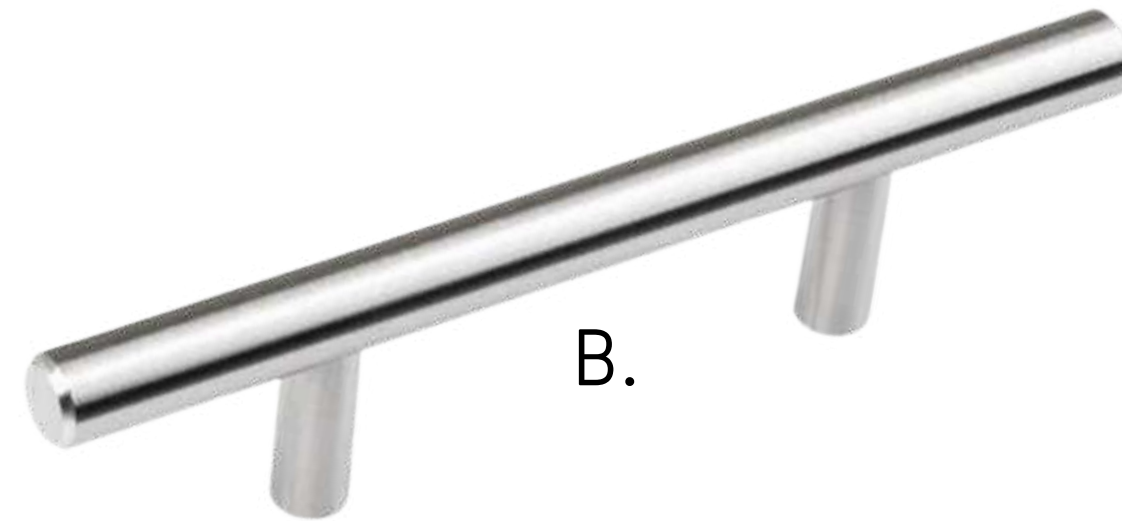


\*\*Cabinets to Ceiling

# KITCHEN: Hardware



A.



B.

# KITCHEN SINKS



**STANARD UNDERMOUNT  
KITCHEN SINK**



**DOUBLE CELL INDUSTRIAL  
KITCHEN SINK**



**INDUSTRIAL SINGLE CELL  
KITCHEN SINK**



**WHITE FARMHOUSE KITCHEN SINK**



**STAINLESS STEEL  
FARMHOUSE KITCHEN**



**BALA FARMHOUSE  
KITCHEN SINK**

# KITCHEN: Sink



Stainless Double Drop In




Stainless Single Drop In



Stainless Farmhouse

# KITCHEN: Sink



Undermount for Thinscape 



Undermount 60/40



Undermount Single Cell

# KITCHEN: Sink



Double Industrial



Single Industrial



White Farmhouse



Bala Farmhouse

# STANDARD THINSCAPE COUNTERTOPS



**BLACK AMANI**



**VOLAKAS  
MARBLE**



**CALCUTTA  
BLANC**



**SPANISH  
LIMESTONE**



**SOAPSTONE  
MIST**



**SOLENNÉ  
MARBLE**



**ARROW  
CREEK**



**RIDGEPOINT**

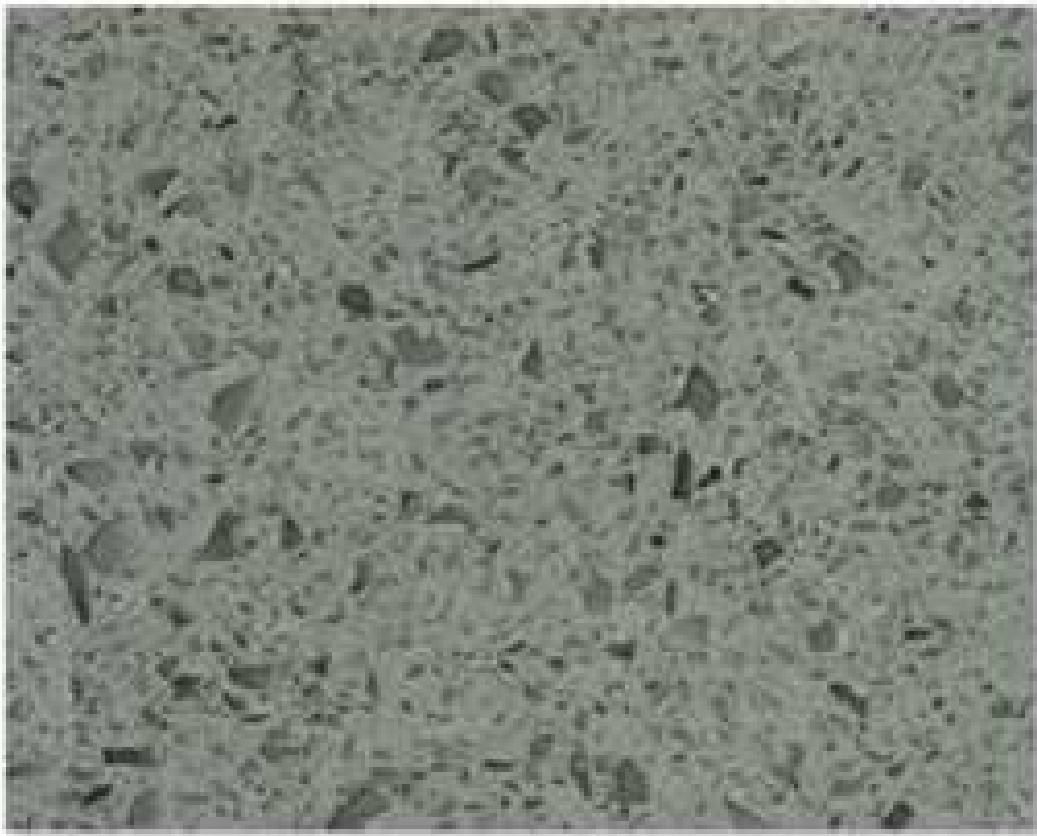


**WHISPER WHITE**



**ICE STATUARIO**

# GRANITE/QUARTZ – UPGRADE – Tier 1



**QUARTZ  
CRYSTAL GREY**



**GRANITE  
VENETIAN GOLD**



**GRANITE GIALLO  
VERMONT**

# GRANITE/QUARTZ – UPGRADE- Tier 2



**GRANITE  
WHITE SPRING**



**QUARTZ  
WHITE CARRERA**



**QUARTZ  
BLACK GALAXY**

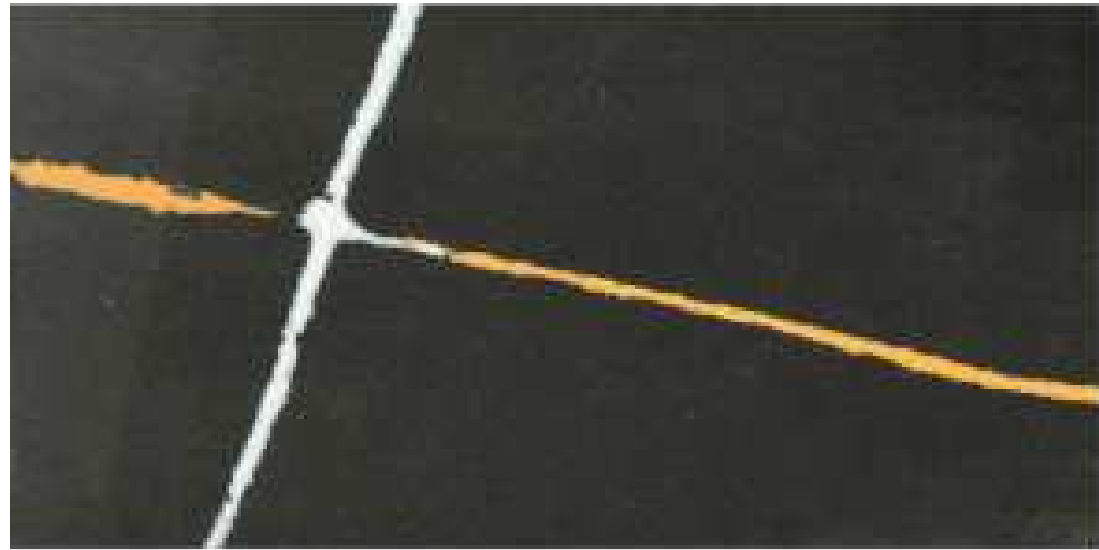


**GRANITE  
BLACK WAVE**



**QUARTZ  
BIANCO SWAN**

# SPECIAL OFFER - GRANITE QUARTZ



**SAHARA NIOR**



**CALCUTTA BRWON**



**CALCUTTA VERONA**



**TAJ MAHAL**



**ONYX**

## WilsonArt Carrara



# KITCHEN: Countertop



# KITCHEN: Tech Room (Optional)



## Ice Statuario Countertop



# CERAMIC BACKPLASH - UPGRADE



**4X8 ARTIC WHITE**



**4X9 VIVACE CAVIAR**



**4X9 VIVACE FOSSIL**



**3X11 CLARA GREY**



**2X10 PEARL WHITE**

# CERAMIC KITCHEN BACKSPLASH - UPGRADE



**8x8 ENCHANTE CHARM**



**5X5 CASA BLANCA KENZI**



**5X5 CASA BLANCA RIALTO**

# KITCHEN: Backsplash



# KITCHEN: Backsplash



# KITCHEN: Backsplash



# KITCHEN: Backsplash

## White Backsplash



# KITCHEN: Backsplash

## White Backsplash



## Black Backsplash



## Black Backsplash



# KITCHEN: Tiles



# SKYLINE

## APPLIANCE PACKAGES

---



DUE TO CONTINUOUS PRODUCT DEVELOPMENT, SPECIFICATIONS AND MATERIALS  
ARE SUBJECT TO CHANGE WITHOUT NOTICE OR OBLIGATION



**STANDARD APPLIANCE**



**5.1 Cu. Ft. Freestanding  
Gas Range with Broiler  
Drawer  
WFG320M0MS**



**BROAN 160 CFM  
Stainless Steel  
F403004**



**30-inch-Wide Top Freezer  
Refrigerator - 18 cu. ft.  
WRT318FZDM**



**1.7 cu. ft. Microwave Hood Combination  
with Electronic Touch Controls  
WMH31017HS**

# Whirlpool®

**STAINLESS STEEL  
APPLIANCE PACKAGE**



**30-inch Self Clean Gas Range  
With No Preheat Mode  
WFGS3530RS**



**Quiet Dishwasher with Boost Cycle  
WDF341PAPM**



**36-inch Wide Side-by-Side 24 cu. ft.  
WRS315SDHM**



**STAINLESS STEEL CANOPY  
APPLIANCE PACKAGE**



**30" Stainless Steel Canopy Range Hood  
Standard Per Plan**



**30-inch Self Clean Gas Range  
With No Preheat Mode  
WFGS3530RS**



**1.6 cu. ft. Sensor Cooking  
Microwave  
WMCS7022PZ**



**Quiet Dishwasher with Boost Cycle  
WDF341PAPM**



**36-inch Wide Side-by-Side 24 cu. ft.  
WRS315SDHM**



**1.7 cu. ft. Microwave Hood Combination with  
Electronic Touch Controls  
WMH31017HS**



**30-inch Gas Cooktop with EZ-2-Lift™  
Hinged Cast-Iron Grates  
WCGK5030PS**



**5.0 Cu. Ft. Single Self-Cleaning Wall Oven  
WOES3030LS**

# Whirlpool®

## STAINLESS STEEL BUILT-IN APPLIANCE PACKAGE



**Quiet Dishwasher with Boost Cycle  
WDF341PAPM**



**36-inch Wide Side-by-Side 24 cu. ft.  
WRS315SDHM**



**STAINLESS STEEL BUILT-IN APPLIANCE  
PACKAGE W/BUILT IN MICRO**



**30" Stainless Steel Canopy Range Hood**



**30-inch Gas Cooktop with EZ-2-Lift™  
Hinged Cast-Iron Grates  
WCGK5030PS**



**1.6 cu. ft. Sensor Cooking  
Microwave  
WMCS7022PZ**



**Quiet Dishwasher with Boost Cycle  
WDF341PAPM**



**5.0 Cu. Ft. Single Self-Cleaning Wall Oven  
WOES3030LS**



**36-inch Wide Side-by-Side 24 cu. ft.  
WRS315SDHM**

# Whirlpool®

INDIVIDUAL UPGRADES



**30" Stainless Steel Canopy Range Hood  
Standard Per Plan**



**5.8 Cu. Ft. Whirlpool®  
Gas 7-in-1 Air Fry Oven  
WEG745H0LZ**



**Double Self-Cleaning Wall Oven  
10.0 Total Cu. Ft.  
WOED3030LS**



**24.7 CF-Whirlpool® 36-inch Wide  
French Door Bottom Mount Refrigerator  
WRFF3436RZ**



## MICROWAVES

**1.7 cu. ft. Microwave Hood Combination  
with Electronic Touch Controls  
WMH31017HS**



**MICRO RANGEHOOD**

**1.6 cu. ft. Sensor Cooking Microwave  
WMCS7022PZ**



**BUILT IN MICROWAVE**

**RISE™ 24" Under Counter Microwave Oven  
with Drawer Design  
JMDFS24JL**



**JENN AIR UNDER COUNTER  
MICROWAVE**



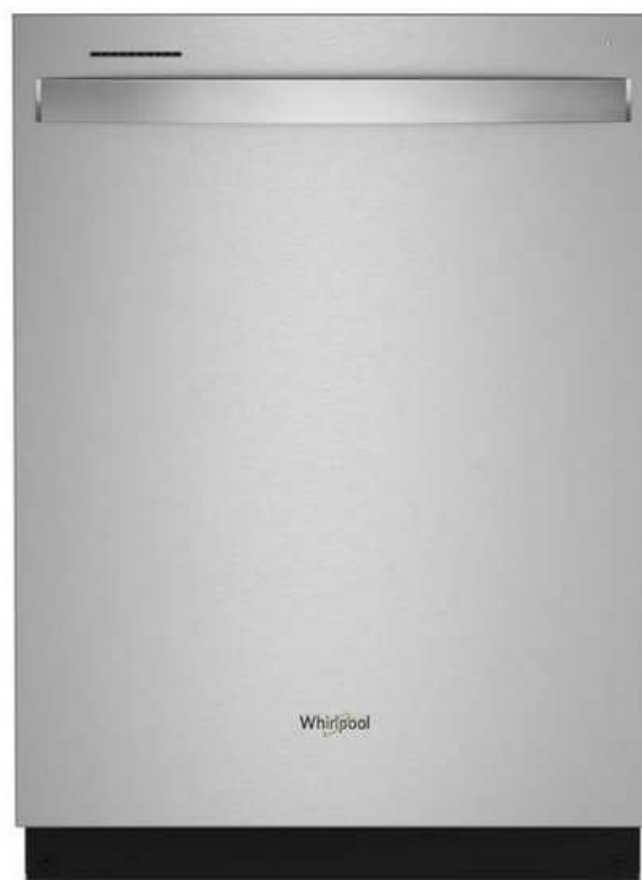
**1.1 cu. ft. Low Profile  
Microwave Hood Combination  
WML55011HS**



**BEST APPLIANCE  
PACKAGE**



**5.8 Cu. Ft. Whirlpool® Gas  
7-in-1 Air Fry Oven  
WEG745H0LZ**



**Large Capacity Dishwasher  
with 3rd Rack  
WDT750SAKZ**



**36-inch Wide Counter Depth  
4 Door Refrigerator - 19.4 cu. ft.  
WRQA59CNKZ**

# KitchenAid®



**30" 1000-Watt Microwave  
Hood Combination  
KMHS120ESS**



**30-Inch 5-Burner Gas Slide-In  
Convection Range  
KSGG700ESS**



**Third Level Utensil Rack Dishwasher  
with 30+ Total Wash Jets, 39 Db  
KDTE204KPS**



**19.4 cu. ft. 36-inch wide Counter-Depth  
4-Door Refrigerator with Print Shield™  
Finish  
KRQC506MPS**

# **KitchenAid®**

## CANOPY PACKAGE



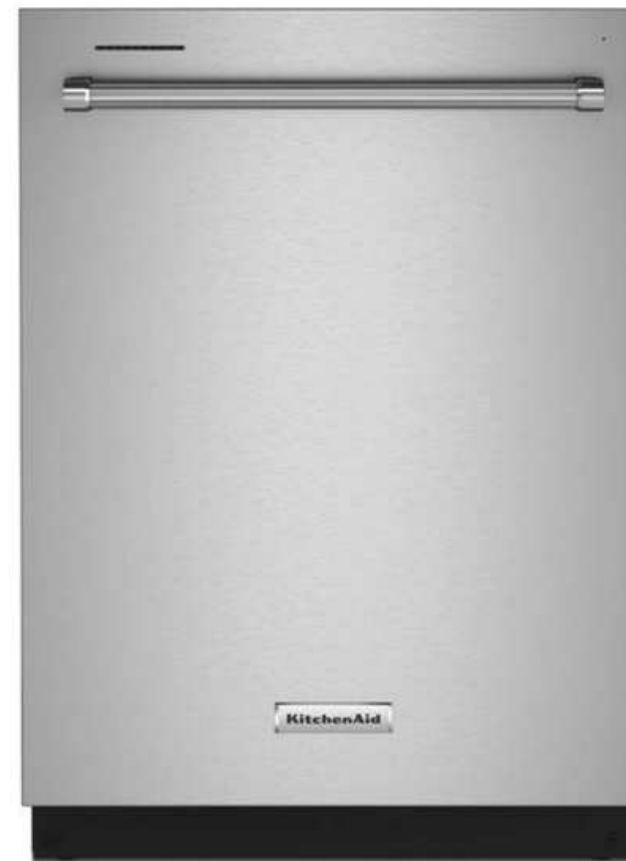
**30-Inch Wall Mount 3-Speed Canopy Hood  
KVWB600DSS**



**1000 Watt Built-in Low Profile Micro with Slim Trim Kit  
KMNT5011KSS**



**30-Inch 5-Burner Gas Slide-In  
Convection Range  
KSGG700ESS**



**Third Level Utensil Rack Dishwasher  
with 30+ Total Wash Jets, 39 DbA  
KDTE204KPS**



**19.4 cu. ft. 36-inch wide Counter-Depth  
4-Door Refrigerator with Print Shield™ Finish  
KRQC506MPS**

**KitchenAid®**  
**Model: KSEG700ESS**

30-Inch 5-Element Electric Slide-In Convection Range





# BATHROOM

# SHOWER ENCLOSURES



**FRAMED SLIDING DOOR  
FOR FIBERGLASS**



**FRAMELESS 3/16" BYPASS  
DOOR FOR FIBERGLASS**



**FRAMELESS 1/4" BYPASS  
DOOR FOR TILE SHOWER**



**TOP RAIL BARN DOOR  
FOR TILE SHOWER**

**AVAILABLE IN BRUSHED NICKEL OR MATTE BLACK**



**TS6032**

**STANDARD TUB  
SHOWER COMBO**



**S6036**

**FG SHOWER REPLACING  
COMBO**



**S6036 + Bench**

**OPTIONAL BENCH**

**AVAILABLE IN BRUSHED NICKEL OR MATTE BLACK**

# SHOWER UPGRADES



**60" TILE SHOWER  
WITH FIBERGLASS  
PAN**



**60" TILE SHOWER  
WITH 2X2 TILE FLOOR**



**60" VINYL TILE  
SHOWER WITH  
FIBERGLASS PAN** (Shown  
with top rail enclosure)



**60" VINYL TILE  
SHOWER WITH  
FIBERGLASS PAN**

# BATHROOM: Shower Surround



# BATHROOM: Shower Surround



# UPGRADE MIRROR OPTIONS



**BLACK CURVED LED MIRROR**



**E17 LED MIRROR**



**WOOD FRAMED MIRROR**  
(Will be same color as cabinets)

# BATHROOM: Mirror



# BATHROOM: Mirror



# BATHROOM: Mirror



# BATHROOM: Mirror

## Standard Mirror





**STANDARD UNDERMOUNT  
OVAL LAVY SINK**

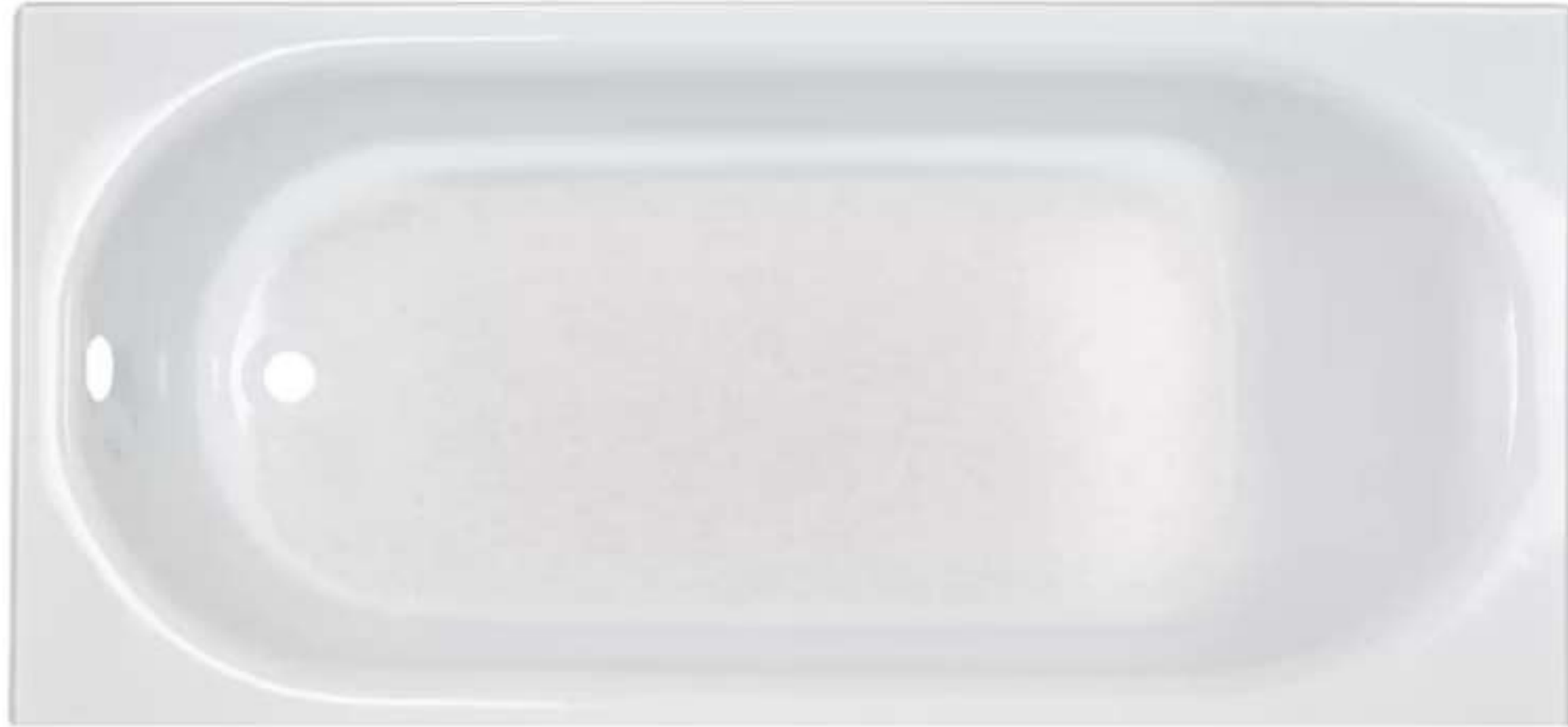


**UPGRADE UNDERMOUNT  
RECTANGLE LAVY SINK**

# BATHROOM: Vanity Sink



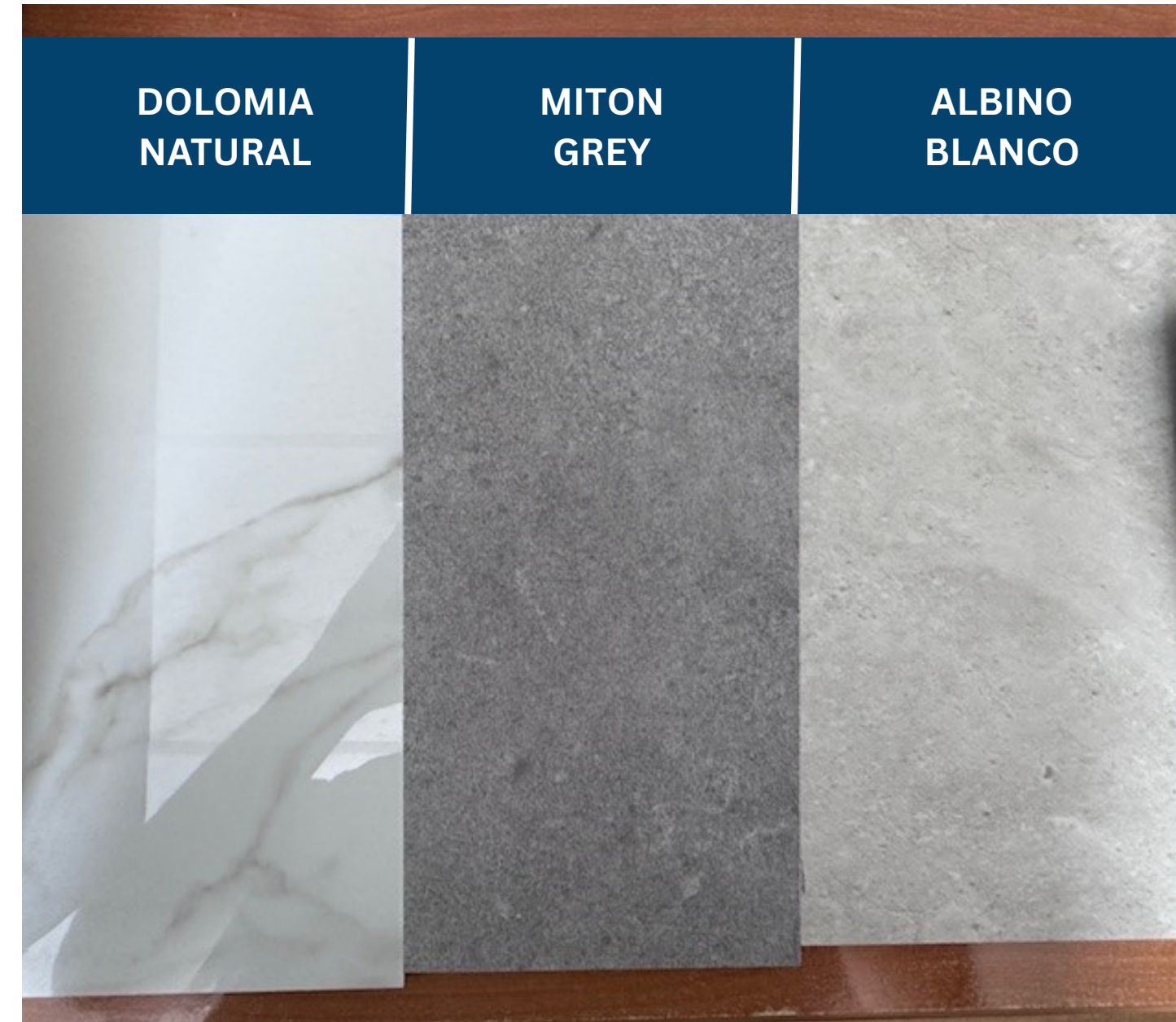
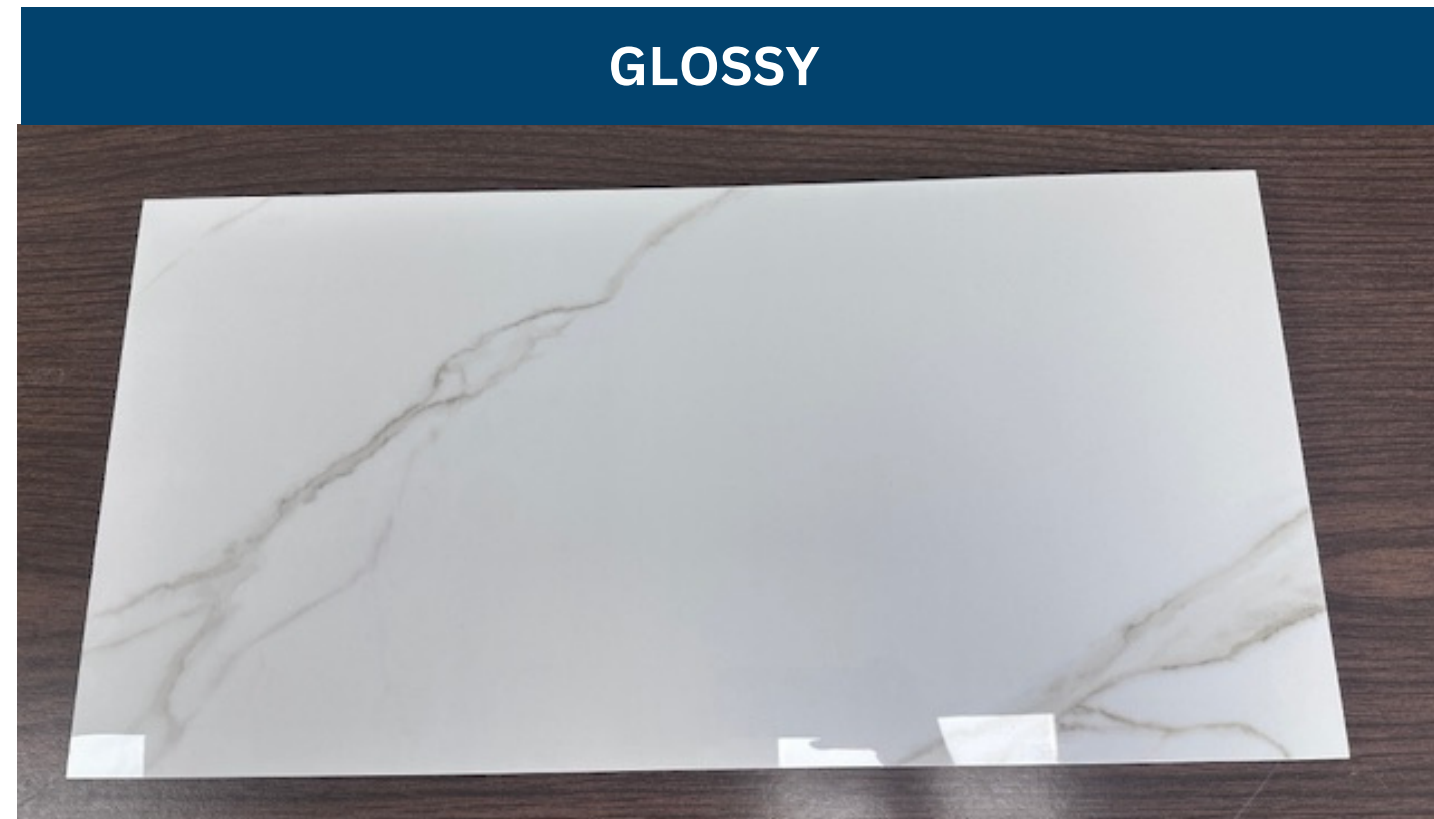
# BATHROOM: Porcelain Enamel Steel Tub



# BATHROOM: Shower Floor, Fiberglass Shower Pan



# BATHROOM: Ceramic Shower Tiles





**CARRARA MARBLE**



**LOUVRE GRANITE**



**VENETIAN MARBLE**

# BATHROOM: Shower System Standards



A.



B.



C.



D.

# BATHROOM: Shower System with Tub Filler, Standards



H.



I.



J.

# BATHROOM: Shower System with Tub Filler



K. 



L. 

**STANDARD KITCHEN FAUCET W/ PULL  
DOWN SPRAYER**



**STANDARD BATHROOM  
LAVY FAUCETS**



**AVAILABLE IN BRUSHED NICKEL OR MATTE BLACK**

**STANDARD KITCHEN FAUCET W/ PULL  
DOWN SPRAYER**



**STANDARD BATHROOM  
LAVY FAUCETS**



**AVAILABLE IN BRUSHED NICKEL OR MATTE BLACK**

# BATHROOM: Shower System Upgrades



\$ E.

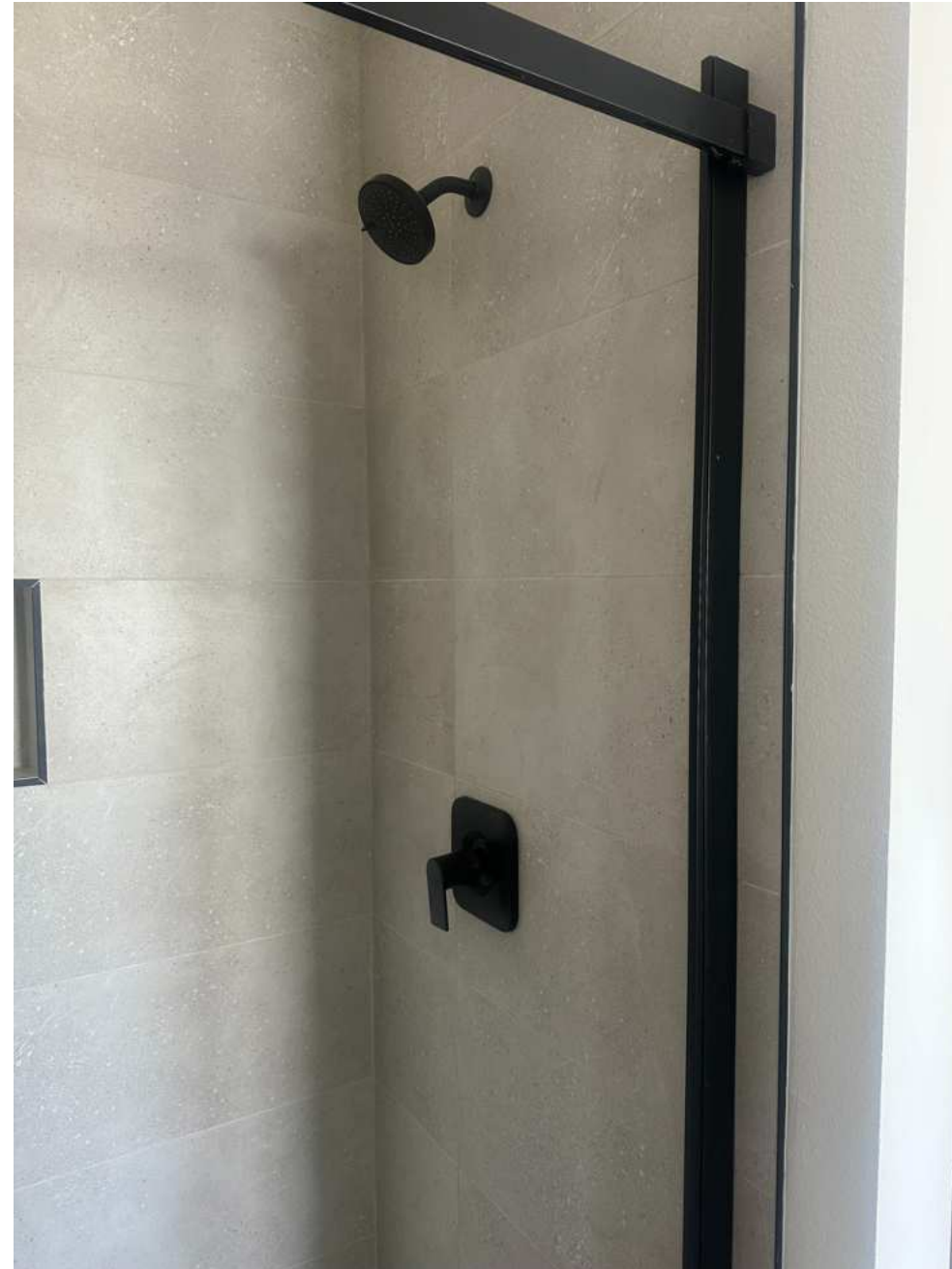


\$ F.



G. \$

# BATHROOM: Moen fixtures



# BATHROOM: Moen fixtures





**MOEN KITCHEN  
FAUCET**



**MOEN LAVY  
FAUCET**



**MOEN TUB SHOWER  
FAUCET**



**HAND-HELD  
SHOWER HEAD**

**AVAILABLE IN BRUSHED NICKEL OR MATTE BLACK**

# BATHROOM: Vanity Faucet



# BATHROOM: Countertop

WilsonArt Upgrade

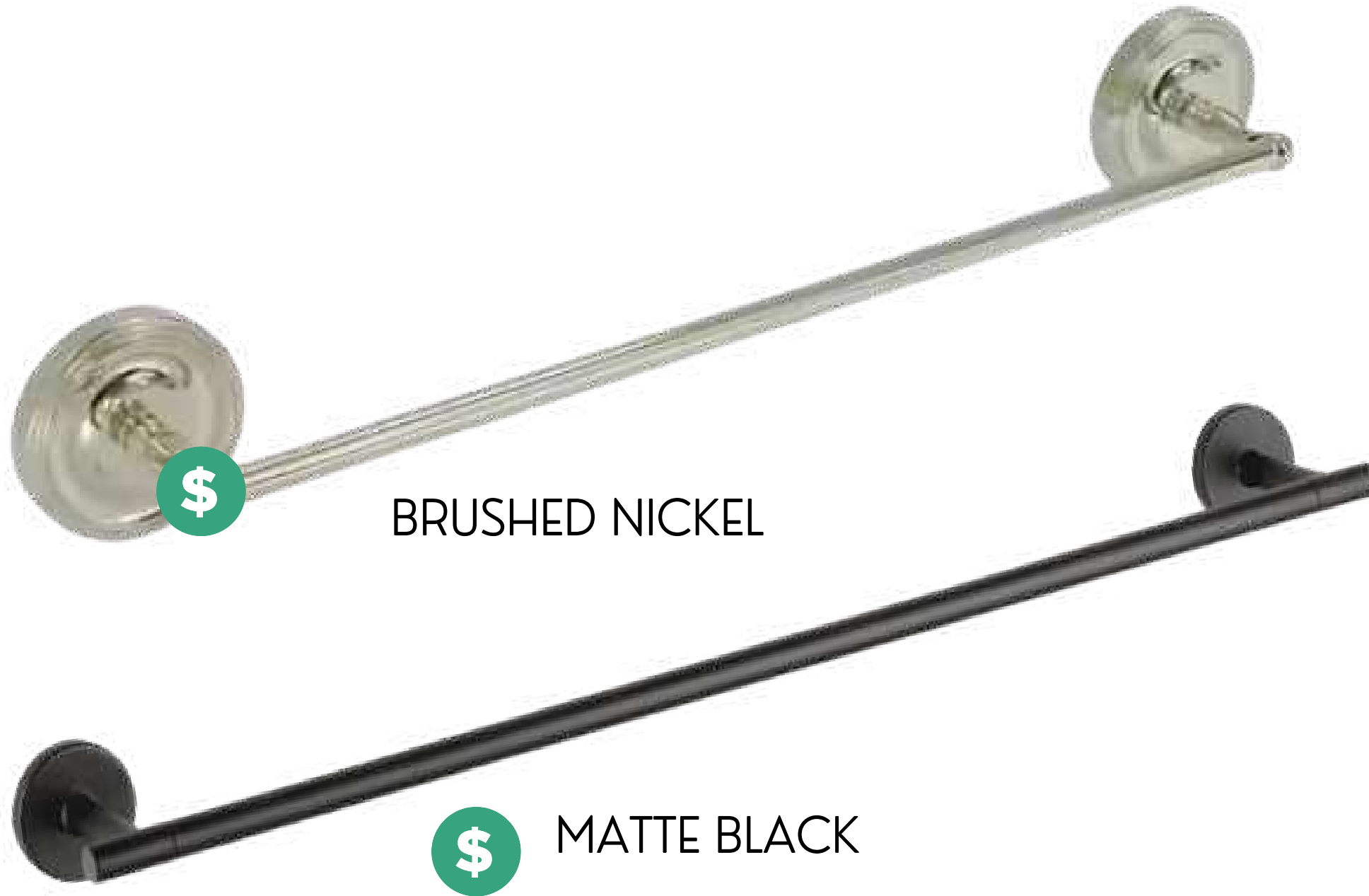


# BATHROOM: Countertop

WilsonArt Countertop



# BATHROOM: Accessories



# BATHROOM: Vanity Lighting



A.



B.



C.



# CARRIER BRANDED THERMOSTATS



# Carrier Smart Thermostat Benefits for Your Customer

- **Simple to Use** – touch buttons to change temperature or switch between heat & cool (no WiFi needed)
- **See System Function at a Glance** – illuminated LED border indicates system startup and system mode
- **Control from Anywhere** – quick and easy App set up. Easy removal of magnet-mounted control allows access to QR code for App set up and linking
- **Smart Home Ready** – works with Alexa/Google/HomeKit
- **Programmable for Savings** – schedule on app
- **Compatible with alarm.com** – for alerts on low temperatures or HVAC malfunctions
- **Control 1 Accessory** – Manage humidity or ventilation



# Carrier Smart Thermostat Icons/Modes

7-SEGMENT WHITE DISPLAY | 4 CAPACITIVE TOUCH BUTTONS



# Carrier Smart Thermostat Benefits for Technicians

---



- **Flexible Setup & Commissioning** – with Carrier Service Technician app
- **Fast & Easy Installation Design** – offers tool-free, wire connections, staggered terminal blocks and patent-pending magnet and push POGO Pin design
- **Simplified Service** - Remote troubleshooting provides faster and more efficient service calls
- **Dry Contact Output** – supports humidifier, dehumidifier or an ERV/HRV
- **Trim Plate Included** – To cover larger thermostat replacements

# Smart Thermostat Connection

---



- Staggered Terminal Connectors
- Easier to wire
  
- POGO Pins/Magnets
- (utility & design patents-pending)
  
- Easier snap on/off removal of thermostat from backplate
  
- Optional trim plate included in box

# Carrier Smart Thermostat Features

---



- 2H/2C Standard, 3H/2C Heat Pump
- Requires C-wire adaptor to work with 4-wire systems
- 3.5" x 5.2" x 0.9", smartphone feel
- Onboard temperature, humidity, proximity and ambient light sensors
- Outdoor temp = local weather service
- Single or weekly programmable scheduling via the Carrier Home app
- One accessory output
- Compatible with Smart Assistants
- Supports Open ADR

# Carrier Smart Thermostat Easy Connections



## CARRIER HOME APP

- Simple Wi-Fi connection to thermostat with Carrier Home app
- Account creation
- Opt-in to dealer permissions for data sharing
- Setup & access schedules



## SERVICE TECH APP

- Simple BLE connection to thermostat via app
- Full system commissioning via app
- Test equipment via app
- View thermostat data via app

# Carrier Smart Thermostat Product Concepts

---



- Perimeter lighting upon operation
  - Cooling – **Blue**
  - Heating – **Orange**
  - Fan – **Green**
- Optional trim plate included in box

# Service Tech App – Key Loadouts



- Thermostat Bluetooth (BLE) Connection
  - Simple / Robust BLE connection to thermostat with Service Tech app
- Thermostat Configuration
  - Full thermostat configuration on Service Tech app by installing technicians
  - Equipment (Relay) Configuration
  - Advanced Thermostat Settings
- Thermostat Testing
  - Test equipment modes (Heat, Cool) directly from Service Tech app
- Servicing Dealer Association
  - Associate thermostat with installing technician's dealer on Service Tech app



[Click here to watch video](#)



# Rheem® Hybrid Builder Residential Electric Water Heater

*Designed for Builders to Maximize Energy Design Rating / HERS Rating*

## Product Highlights

- 3.50 UEF
- Meets NEEA Tier 3 Requirements
- Integrated WiFi
- California Title 24 Compliant (JA13 Ready)
- Quiet Operation
- Design certified to NSF/ANSI 372 (lead control)
- 10 Year Limited Warranty<sup>1</sup>



**Hybrid Electric  
Builder Select**  
40, 50, 65 and  
80-Gallon Capacities  
208-240 Volt / 1 PH / 24 Amps



FEATURES & BENEFITS	
<b>High Efficiency</b>	Meets ENERGY STAR® requirements
	Increased property value for consumers
<b>Easy Installation</b>	Easily Ducted – for installation in confined spaces with minimal make up air required
	Easy access to side water connection and top electrical junction box; <i>Zero clearance required in the back or side of the unit</i>
	¾" NPT water inlet & outlet; ¾" condensate drain connections
	Dry fire protection
<b>Available EcoNet® Smart Technology</b>	Integrated WiFi <sup>2</sup>
	Energy usage reporting
	Energy saving scheduling

## E7 Series Electric Furnace

# INSTALLATION INSTRUCTIONS

## Downflow & Upflow Models



**E7EM MULTI-POISE**



**E7EU UPFLOW**



**E7ED DOWNFLOW**

## **⚠ WARNING**

### **ELECTRICAL SHOCK, FIRE OR EXPLOSION HAZARD**

**Failure to follow safety warnings exactly could result in serious injury or property damage.**

**Improper servicing could result in dangerous operation, serious injury, death or property damage.**

- **Before servicing, disconnect all electrical power to furnace.**
- **When servicing controls, label all wires prior to disconnecting. Reconnect wires correctly.**
- **Verify proper operation after servicing.**

**DO NOT DESTROY. PLEASE READ CAREFULLY &  
KEEP IN A SAFE PLACE FOR FUTURE REFERENCE.**

## **ATTENTION INSTALLERS:**

It is your responsibility to know this product better than your customer. This includes being able to install the product according to strict safety guidelines and instructing the customer on how to operate and maintain the equipment for the life of the product. Safety should always be the deciding factor when installing this product and using common sense plays an important role as well. Pay attention to all safety warnings and any other special notes highlighted in the manual. Improper installation of the furnace or failure to follow safety warnings could result in serious injury, death, or property damage.

These instructions are primarily intended to assist qualified individuals experienced in the proper installation of this appliance. Some local codes require licensed installation/service personnel for this type of equipment. Please read all instructions carefully before starting the installation. Return these instructions to the customer's package for future reference.

# PERPETUAL HOMES

## STANDARD SPECIFICATIONS



### CONSTRUCTION & SPECIFICATIONS

- HIGH DENSITY BLOWN-IN ATTIC INSULATION
- EXTENDED WARRANTY THROUGH YEAR 7 ASSURANT
  - NOW ALSO INCLUDES STRUCTURAL
  - COVERAGE! (DEDUCTIBLES APPLY, CLAIMS PROCESSED BY ASSURANT)
- 30 LB. ROOF LOAD
- TALL WINDOWS PER FLOOR PLAN
- MOISTURE BARRIER WRAP
- 12" FRONT AND REAR OVERHANG
- 12" SIDEWALL EAVES (PER PLAN)
- ENERGY STAR RATED
- FORMALDEHYDE-FREE INSULATION
  - FLOOR R-22
  - 2 x 6 WALLS R-21
  - CEILING R-38
  - 2" X 6" EXTERIOR WALL STUDS
- ALL STRUCTURAL LUMBER USED IS KILN-DRIED FOR HIGHER QUALITY
- WHITE VINYL FRAMED, DUAL GLAZED WINDOWS WITH LOW-E COATING FOR ENERGY SAVINGS (BLACK VINYL OPTION)
- WINDOWS ARE ENERGY STAR® RATED & APPROVED
- 100 AMP ELECTRICAL SERVICE
- ELECTRIC FURNACE
- 9' SIDEWALL WITH FLAT CEILINGS (VAULTED PER PLAN)
- 40 GALLON WATER HEATER
- 2/12 & 3/12 STANDARD ROOF PITCHES (PER PLAN)
- ENGINEERED & TESTED TRUSSES

### EXTERIOR

- CUSTOM SEMI-GLOSS EXTERIOR PAINT WITH COLOR DESIGN FEATURING HIGH QUALITY PPG® PAINT
- (2) EXTERIOR GFI PROTECTED PATIO OUTLETS (LOCATIONS VARY PER PLAN)
- CARRIAGE PORCH LIGHT
- SIDEWALL EAVES PER PLAN (CONSTRUCTION MODIFICATIONS CAN AFFECT STANDARD EAVE DESIGN)
- CLASS "A" 30-YEAR DIMENSIONAL SHINGLES
- SHUTTERS (PER PLAN)
- FIBER-CEMENT EXTERIOR SIDING
- WINDOW COVERINGS WITH FAUX WOOD BLINDS INCLUDED (PER PLAN)
- TWO HOSE BOBS
- 4" TRUWOOD WINDOW TRIM
- 4" TRUWOOD DOOR TRIM
- 36" CRAFTSMAN FRONT DOOR - 32" REAR DOOR
- ARCHITECTURAL SHINGLES PER PLAN
- FASCIA AND VENTED SOFFITS
- STRUCTURALLY RATED (OSB) ROOF SHEATHING
- VINYL DUAL PANE LOW E PRESSURE RATED WINDOWS
- STRUCTURAL EXTERIOR SHEATHING

# PERPETUAL HOMES

## STANDARD SPECIFICATIONS



### INTERIOR APPOINTMENTS

- FLAT 5'/4" BASEBOARDS
- FLAT DOOR TRIM
- FLAT WOOD CASED WINDOWS
- CRAFTSMAN BASEBOARD
- TALL SHAKER CABINETS WITH FINGER PULLS
- WOOD SHELVING/RODS (CLOSETS)
- USB RECEPTACLE IN KITCHEN AREA FOR CAMBRIDGE/PASSAGE DOORS
- SOFT CLOSE CABINET DOORS
- LEVER DOOR HANDLES
- FAUX WOOD BLINDS
- MODERN SQUARE CORNERS OR DRYWALL (KNOCKED DOWN)

### FLOORING COVERINGS

- CARPET OR LINOLEUM FLOORING

### LIGHTING

- DESIGNER-SELECTED LIGHTING IN DESIGNATED AREAS
- (12) RECESSED LED LIGHTS THROUGHOUT
- 2 TO 4 LIGHT SOURCES OVER BATHROOM SINK
- TWO EXTERIOR GFI LIGHTS

### KITCHEN

- UNDERMOUNT OR UNDERMOUNT SINGLE STAINLESS STEEL SINK
- WHIRLPOOL® STAINLESS STEEL FINISHED KITCHEN APPLIANCES
  - 30" GAS OR ELECTRIC FREESTANDING RANGE
  - .30" SELF-CLEANING OVEN
  - 18 CUBIC FOOT DOUBLE DOOR REFRIGERATOR
  - MICROHOOD
  - 4-CYCLE DISHWASHER
- GARBAGE DISPOSAL
- NICKEL EURO SINGLE LEVER KITCHEN FAUCET
- KITCHEN ISLAND (PER PLAN)
- NONPOROUS WILSONART THINSCAPE COUNTERTOPS
- OVERHEAD LED LIGHTING

\* SKYLINE CHAMPION MANUFACTURERS ONLY

# PERPETUAL HOMES

## STANDARD SPECIFICATIONS



### BATH

- 60" FIBERGLASS TUB/SHOWER
- WILSONART THINSCAPE COUNTERTOPS
- BEVELED-EDGE MIRRORED MEDICINE CABINET
- TOWEL BAR & PAPER HOLDER
- ELONGATED LOW-FLOW WATER SAVING TOILETS
- MBS® DUAL LEVER FAUCET WITH RECTANGULAR
- UNDERMOUNT LAVATORY SINK
- MBS® TUB / SHOWER , FAUCET FEATURING PRESSURE BALANCE VALVES
- CEILING VENTED EXHAUST FAN
- COUNTER LENGTH POLISHED EDGE VANITY MIRRORS
- DUAL LEVER BATHROOM FAUCET

### PERPETUAL " SMART CHOICE "

#### OPTIONS FOR YOUR "SMART HOME"

- SOLAR TUBE SKYLIGHTS THAT ILLUMINATE A HOME INTERIORS WITHOUT TURNING ON LIGHTING
- FIXTURES DURING DAYLIGHT HOURS , SAVING ENERGY
- PREP RACEWAYS FOR MOUNT FLATSCREEN TELEVISION
- AIR CONDITIONING
- FIRE SPRINKLERS

#### OPTIONS (EXTERIOR)

- UPGRADED MODERN STUCCO ELEVATIONS (COMPLETED ON SITE)
- STONE EXTERIOR ACCENTS
- MODERN AND FARMHOUSE EXTERIOR DETAILING
- MOEN FIXTURES PER PLAN
- 4/12 & 6/12 ROOF PITCHES

\*SKYLINE CHAMPION MANUFACTURERS ONLY

### MECHANICAL ELECTRICAL PLUMBING

- 100 OR 200 AMP SERVICE
- PLUMB IN ICEMAKER IN WALL
- WIRE ELECTRIC DRYER
- PLUMB FOR WATER
- SHUT-OFF VALVES THROUGHOUT
- HIGH EFFICIENCY ENGINEERED DUCT SYSTEM, PERIMETER REGISTERS, EVEN TEMPERED CONTROL
- QUIET AIR DELIVERY, % SEALED SYSTEM, TOE-KICK REGISTERS
- HIGH EFFICIENCY GAS FURNACE H/E
- CUSTOM BATH LIGHTS
- CARRIAGE PORCH LIGHT
- 40 GALLON GAS WATER HEATER
- USB RECEPTACLE IN KITCHEN
- ROCKER LIGHT SWITCHES

SEE SKYLINE PPG PAINTS FOR COLOR SELECTION

DUE TO CONTINUOUS PRODUCT DEVELOPMENT AND IMPROVEMENT, AVAILABILITY, DIMENSIONS, PRICING, FLOOR PLANS, FLOOR COVERING AREAS, ELEVATIONS, FEATURES, AND OTHER INFORMATION ARE SUBJECT TO CHANGE WITHOUT NOTICE OR OBLIGATION. SQUARE FOOTAGE AND OTHER DIMENSIONS ARE APPROXIMATE. EXTERIOR IMAGES MAY BE ARTIST RENDERINGS AND ARE NOT INTENDED TO BE AN ACCURATE REPRESENTATION OF THE HOME. RENDERINGS, PHOTOS AND FLOOR PLANS MAY BE SHOWN WITH OPTIONAL FEATURES OR THIRD-PARTY ADDITIONS. ALL RENDERINGS, ILLUSTRATIONS, PHOTOGRAPHS, FLOOR PLANS, IMAGES, AND DRAWINGS OF HOMES ON PERPETUAL HOMES WEBSITE (COLLECTIVELY, "RENDERINGS") ARE FOR ILLUSTRATIVE PURPOSES ONLY AND SUBJECT TO CHANGE AT ANY TIME AND FOR ANY REASON AT ALL. PERPETUAL HOMES MAKES NO REPRESENTATION OR WARRANTY THAT HOMES WILL BE THE SAME AS SUCH RENDERINGS.

# EXTERIOR: Gutters

Our manufacturer highly recommends you install gutters, here are some of our recommendations for companies in the Bay Area and beyond.

## **NOTE: Pay gutter installer direct**

### **Roof Solutions Inc in Vacaville:**

Website: <https://roofsolutionsca.com/>

Phone: (707) 449-ROOF

Email: [info@roofsolutionsca.com](mailto:info@roofsolutionsca.com)

Area of Service: Will service East Bay and beyond + Napa/Calistoga Area

### **Sierra Roofing and Solar in Oakland:**

Website: <https://www.sierrarroofing.com/>

Phone: (510) 889-0100

Email: Can fill out form on website to get estimate/contact

Area of Service: Will service Alameda and Contra Costa Counties

### **Los Gatos Roofing of San Jose:**

Website: <https://www.losgatosroofing.com/>

Phone: (408) 909-8396

Email: Can fill out form on website to get free estimates/contact

Area of Service: Will service San Jose/South Bay areas

### **Mortensen Roofing and Gutters in Concord: Website:**

<https://mortensenroofing.com/> Phone: (925) 685-4613

Email: [mortensenroofing@att.net](mailto:mortensenroofing@att.net) Area of Service: Will

service anywhere in the broader Bay Area **Leaf Filter**

### **Gutter Protection in Alamo Website:**

<https://www.leafilter.com/?nab=1> Phone: 1 (800) 290-

6106 Email: [support@leafhome.com](mailto:support@leafhome.com) Area of Service:

Alamo and surrounding areas





*Thank You*