



# PROSPECTUS



Timaru Girls' High School  
SOUTH CANTERBURY | NEW ZEALAND

[www.timarugirls.school.nz](http://www.timarugirls.school.nz)

# EXPERIENCE OUR SCHOOL

SCIENTIA POTESTAS EST  
KNOWLEDGE IS POWER

---

## Motto/Whakataukī

Ko te Manu e Kai ana i te miro,  
nōna te ngahere, engari, Ko te Manu  
e kai ana i te Mātauranga, nōna te ao!

The forest belongs to the bird who feasts on the miro berry, but the world belongs to the bird who feasts on education. TGHS translation: To the student who is open to learning and growing, her opportunities are unlimited.

## Values/Principles

- Developing **Leadership / Mana Wahine**
- Creating a healthy **Learning Culture/ Whai Hua, Whai Ako, Whai Mātauranga**
- Respecting and acknowledging our **Heritage/ Mana Tuku Iho**
- The power of a strong **Community/ Tūrangawaewae**

## Vision

We develop confident learners who experience success.

## Areas of Strategic Focus (2023-2025)

1. Engaging Teaching and Learning: We provide engaging teaching and dynamic learning opportunities that will empower and inspire our learners. We recognise that strong learning relationships between teachers and students is a key factor in determining academic success.

2. A Positive and Inclusive Environment for all: We will continue to prioritise inclusive learning environments where strong relationships and student well-being is paramount, and everyone is valued and supported.

We will build a culture of organisational renewal and transformation through honest reflection and rigorous self-review.

---

Tēnā Koe, welcome to our very special school. Timaru Girls' High School has been supporting young women to be the best that they can be since 1880. Wonderful leaders, musicians, artists, lawyers, scientists, sports-women, environmentalists, academics and so much more, have enjoyed their secondary school years here at our place. We are proud of our students. We place a great emphasis on building positive relationships and developing a sense of self-belief and confidence.

For young women to succeed in this world, they need to know who they are, respect people, have an appreciation for the value of hard work and be able to embrace

change and cope with pressure. Here at Timaru Girls' High School, we teach the whole person. We want our students to be confident, active partners in their learning, taking full advantage of all that our school can offer them.

Our school reflects the richness of New Zealand society and prepares young women for success. Join us, as we learn, grow and share together.

## Ms Deb Hales - Principal



- Technology  
Mataurangi Hangarau
- Library  
Whare Puk
- Toilets  
Whare paku
- Hostel  
Wharenoho
- Science Lab s  
Mātauranga Pūtaiao
- Cafe (Food)  
Whare Kai
- Administration  
e Whakahaere
- Student Entrance  
Tomokanga Akōnga
- Tūnga Waka





# EXPERIENCE

## EDUCATIONAL SUCCESS

---

During Years 9 and 10 all students study a number of compulsory subjects. These are English, Mathematics, Health & Physical Education, Science, and Social Studies.

At Years 9 and 10, students also study between three and six optional subjects.

At Year 11, English, Mathematics and Science are compulsory.

All students choose three additional Level 1 subjects.

At Year 12 students study five subjects usually at Level 2.

At Year 13, students study five subjects, usually at Level 3.

Students with a strong academic focus are also encouraged to work towards scholarship in their strongest subjects.

Special tutor assistance is available to students in a range of subjects including Reading and Mathematics.

---



# EXPERIENCE

## SPORTING SUCCESS

---



Our school employs a Sports Coordinator who works with staff, students and outside volunteer coaches to ensure our girls have access to coaching and equipment so that they can participate in a wide range of winter and summer activities.

The Head and Deputy Head of Sports and senior student sports committee work with the Sports Co-ordinator to provide a range of lunchtime activities.

Sporting activities currently offered by the school include: Archery, Athletics, Badminton, Basketball, Cricket, Croquet, Cross Country, Cycling, Equestrian, Hockey, Indoor Bowls, Lawn Bowls, Netball, Petanque, Rowing, Rugby, Skiing, Small-bore Rifle Shooting, Soccer, Squash, Table Tennis, Tennis, Touch Rugby, Volleyball.

In addition to competitive and social team sports, Timaru Girls' High School provides expert instruction in other outdoor pursuits from annual school camps to high country tramping as part of the Duke of Edinburgh programme.

Healthy physical exercise is an important part of the culture at Timaru Girls' High School. Our students play a variety of team sports both competitively and socially with other schools where team work and co-operation are essential.

---



# EXPERIENCE

## CULTURAL SUCCESS

---

The school's Performing Arts' Department offers classes in Drama and Music. These classes often lead to performance evenings and other presentations.

Our Head of The Arts and Deputy Head of The Arts work with the Learning Area Head of The Arts to provide a variety of activities.

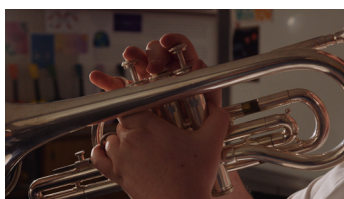
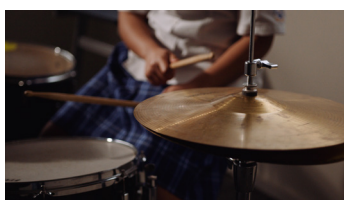
Cultural activities offered by the school include: Arts Committee Events, House Choir Festival, Stage Challenge, Chorale - The Big Sing, Kapa Haka, Speech Cup, Chamber Music, Lip-Sync, Singing Cup, Combined School Production, Orchestra Variety and Performance Evenings, Cultural House Event, Shakespeare Festival.

### **Musical Productions**

A combined musical production with Timaru Boys' High School is performed annually. Each school alternates responsibility for producing and hosting this event.

### **Music Tuition**

Students are offered music tuition in a range of instruments from the pool of itinerant music tutors.





# EXPERIENCE

## EXTENDED FAMILY

---

### “THE HOUSE” BOARDING FACILITIES

Boarding enables girls who do not live in our local area to benefit from the high-quality education available at Timaru Girls' High School. Boarders and their families bring a special dimension and play a very important part in the life of our school. Situated in the extensive park-like school grounds, we offer accommodation for girls from Years 9-13, with a safe and secure environment in which to focus on their studies and to discover and explore new opportunities while having fun. Common rooms are available with televisions, WiFi, hot drink and snack making facilities.

“The House” provides students with both personal and communal workspaces. Computer facilities are available and are linked to the school's computer network. Prep is supervised by experienced teachers onsite - a unique situation to TGHS. This provides the student with quality one to one tutoring where required, allowing the girls to further strengthen their relationships with the academic staff within the school. Recreation facilities include the hostel recreation room, school tennis courts, gymnasium, music practice rooms, and access to sports and cultural activities.

“The House” provides a nurturing, maternal environment for the girls, ensuring they feel a part of our extended whānau. With 24-hour staffing, it truly is a “home away from home”. We pride ourselves on creating an environment that is supportive and caring. A nutritious and tasty menu is provided by the catering staff. The Boarders' Representative Committee also provides input into the weekly menu. Senior boarders have leadership opportunities and provide valuable role models to the younger girls.

“The House” provides a supportive extended family environment that encourages young women to experience personal growth and excellence and offers a unique opportunity to learn life skills and responsibility in a structured and caring environment. Enquiries and enrolments are welcomed and hostel prospective boarders and their families are invited to view at any time.

To make an appointment contact:

P: +64 3 688 1122

E: [enrolments@timarugirls.school.nz](mailto:enrolments@timarugirls.school.nz)

[www.timarugirls.school.nz](http://www.timarugirls.school.nz)



Boarding Fees are available on request.

Follow us on facebook and instagram.





# EXPERIENCE

## INTERNATIONAL SUCCESS

---

### **International Students**

**Timaru Girls' High School welcomes International students from all over the world. We aim to provide a quality education for each student in a secure and caring environment.**

### **Support**

When students arrive in the South Island of New Zealand, they are collected from Christchurch International Airport and driven the 2-hours south to Timaru. After an orientation period, the school will help the student to purchase the school uniform, open a bank account, and select subjects that they will study at our school.

Our Homestay Coordinator and International Dean will work closely with the students over the first few weeks. They are happy to discuss any concerns students may have with studies or personal issues. Each student has an orientation with the International Dean to ensure they understand the day to day school requirements and are comfortable in their new environment.

Timaru Girls' High School offers the accommodation options of boarding at the on-site school hostel or staying with fully approved homestay families. We ensure the highest quality of homestay options where students get to fully experience life within a New Zealand family.

### **The Curriculum**

Our International students are placed in classes suitable to their level of English after an initial testing process.

Places in specific year levels are offered once we have assessed the language competency of the student.

The Timaru Girls' High School curriculum currently offers courses leading to the established standard NZQA qualifications, including the National Certificate in Educational Achievement (NCEA) Levels 1-3. Essential components in the International programme that we offer include course flexibility, individual subject choice, personal satisfaction and measured academic achievement.

Specialist teaching provides learning opportunities in English as well as offering support in all areas of comprehension - speaking, writing, reading, and listening.

Opportunity to study and sit IELTS or other similar examinations is available along with further help in specialist subject areas through school and private tutoring.

All international enquiries can be directed to the International Student Director, Mr Andrew Gill.  
[agill@timarugirls.school.nz](mailto:agill@timarugirls.school.nz)

---



# EXPERIENCE

## COMMUNITY SUCCESS

---

### **School Community Support**

Timaru Girls' High School has a strong support and guidance network. It is designed to meet the academic and social needs of all students in our school community. Subject teachers set a learning environment that encourages academic achievement and creates a positive classroom community. Form teachers provide the next level of support. Further guidance and support is offered by the Deans who oversee the progress and welfare of students in a single year group. The Dean follows a year group from Year 9 through to Year 13. This gives the Dean a chance to really get to know the students in their year group and their families and provide personal guidance. More specialised help for individual students can be sought from the Guidance Counsellor or

the Careers Advisor. Relationships between staff and students are respectful and caring.

### **Wider Community**

Timaru Girls' High School enjoys strong links with other education providers in our community as well as local businesses. We value the relationship that we have with these organisations as they provide important pathways beyond school for some of our students.

We collaborate proactively with local schools, especially our brother school, Timaru Boys' High School, doing all that we can to help young people in this region, to thrive. We instil in our students a sense of "community" and we strive to assist them to become global citizens who will go out into the world and make a positive difference.



# EXPERIENCE

## FUTURE SUCCESS

---



We value individual achievement, creativity and personal excellence. We believe it is best achieved within a single-sex environment where learning styles specific to girls are understood and best catered for. Our curriculum offers a wide variety of achievement opportunities and we encourage participation in a diverse range of cultural, sporting and service activities.

Our learning and teaching programmes support positive outcomes for our girls. We expect them to work hard to achieve to their potential. We value the partnership between school, students, their families and the wider community towards better achievement for all. We are lucky in that our school is set in attractive and mature grounds.

EXPERIENCE SUCCESS

---



*Image: Courtesy of Te Papa*

**Proud to be educating our girls since 1880**



**ENROL NOW**



**CONTACT**

Cain Street, Timaru

P: 03 688 1122

E: [principal@timarugirls.school.nz](mailto:principal@timarugirls.school.nz)

[www.timarugirls.school.nz](http://www.timarugirls.school.nz)