

Archer



Gas Log Fire



IS 900 Insert - Charcoal

**THE WORLD'S MOST EFFICIENT
GAS LOG SPACE HEATERS WITH
THE HIGHEST ENERGY STAR RATING!**



Introducing the most efficient gas log space heater on the market

Please read this brochure carefully and discover why Archer Gas Log Space Heaters are superior to other gas log space heaters on the market today. Also notice the beautiful design that will add style and value to your home.

The Archer heater range with its 5.4 to 5.7 energy star rating is today the world leader in modern day gas heating technology. Its classic beautiful styling and the natural look of a gas log fire will complement any home decor.

The Archer Heater has achieved the ultimate in efficiency and high heat output to give you the most superior product available on the market today to heat your home. All Models are available for natural gas and LPG installations.

Energy Star Rating...

Energy Star Rating represents an industry wide independent Rating that indicates how efficiently a heater operates.

The more Energy Stars, the greater the efficiency. The Archer Gas Log Space Heater range with its 5.4 - 5.7 Energy Star Rating, is the highest Star rated product available in the world today.

With its high Energy Star Rating and heating transfer efficiency, the Archer Gas Log Space heater range has the capacity to heat areas 18 squares (180m²) to 25 squares (250m²)* No other Gas Log Space Heater range on the market today can match this claim.

Read the facts and discover why the Archer range has created a revolution in modern, efficient, cost saving in home space heating.

*NOTE: Heating capacity may vary depending on heater model selection, climate, home design, heater location, ceiling height and insulation etc.

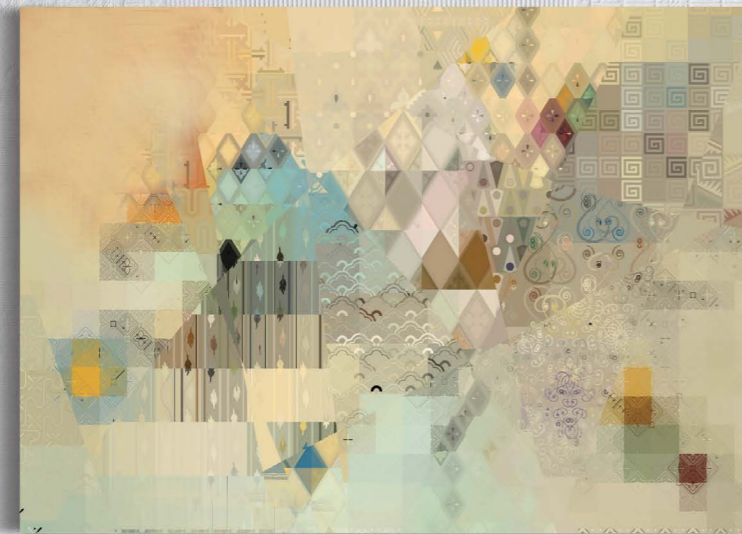
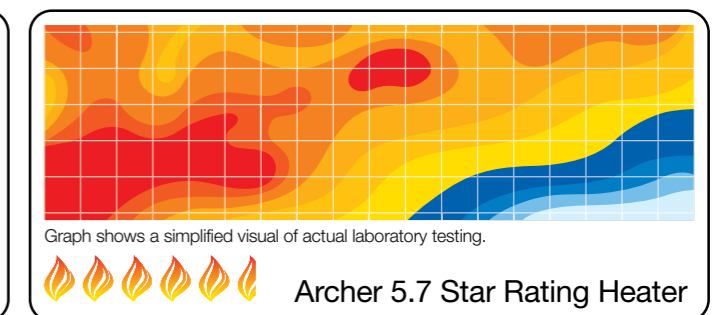
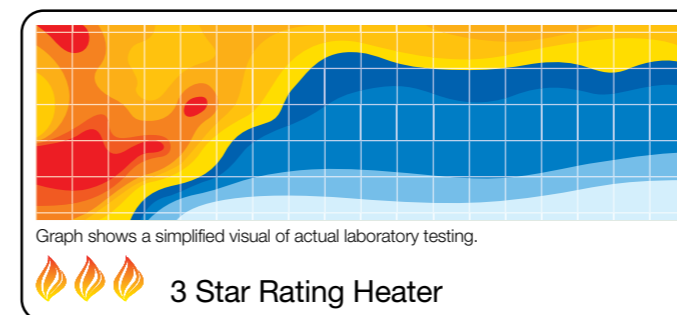


Heater Comparison

The Mj input of a heater should not be used for comparing the products heat output and heating capacity. The Kw heat output and efficient heat transfer is the only true method of product comparison.

Example:

A 30 Mj heater with a 5.7 Energy Star rating has a larger heat output than a 30 Mj 3 star energy rated heater.





Revolutionary Patented Triple Heat Exchanger

International Patent No PCT/AU2007/0011459

The secret of the Archer revolutionary 5.4 - 5.7 energy star performance is the patented triple heat exchanger that puts more heat into your home and money in your pocket instead of up the chimney. The Archer Gas Log Space Heater has shattered the boundaries of acceptable product design.

The basis of the incredible leap in high heat output and high efficiency achieved by the Archer Gas Log Fire is the revolutionary heat exchange system which extracts 92% + heat from the incoming gas which is directly transferred into your home.

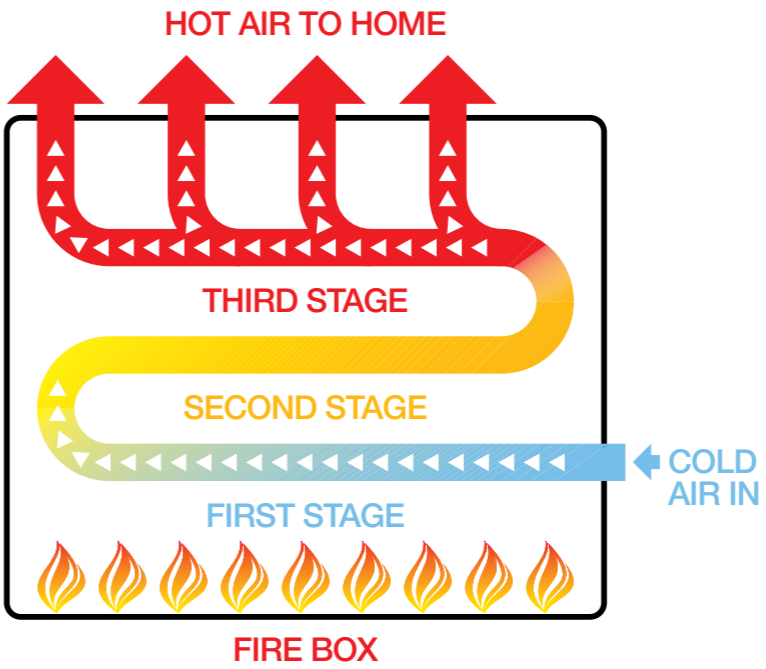
The Archer Gas Log Fire does not only feature a burning system that looks realistic, but also incorporates a combustion process which delivers high efficiency and high heat output.

(Beauty - Efficiency - Heat)

After engaging in an extensive research and development program of many years, Aurora have developed an innovative high efficiency heat exchange system which has amazed the industry and has achieved the highest appraisal from independent heating authorities for its innovative design and efficiency.

The Archer's high efficiency 3 stage high performance heat exchange system, allows for the heat of the incoming combustible gases to be squeezed to 55°C before they enter the flue resulting in total combustion, to ensure that every megajoule of gas input energy available is put to work for heating the home.

This type of process of achieving high performance heat output has to date not been achieved by any other similar appliance, but with an Archer heater it is reality and you get the benefit.



Doing our share for the environment with 92% combustion efficiency...

Any advance in reduction of greenhouse gases is a small step forward to preserve the environment and the standard of living for future generations.

We are committed to reduce pollution (greenhouse gases) Aurora has ensured that one of the major beneficiaries will be the environment.

The Archer heater range not only extracts 92% of the heat from the gas, it also spreads it better through your home.

Combustion efficient clean burn, super efficient heat exchanger and 55°C flue exhaust temperature, generates fewer greenhouse gases (CO-CO2) per megajoule of heat produced, when compared to other similar conventional gas heaters, which is a direct benefit to the environment.



IS 750 Insert Flat Front with Beach Fire Log Set - Color Charcoal



Operating and Safety Features

Computer Controlled Safety and Efficiency Hot Surface Ignition (H.S.I.) Module

The Archer's solid state electronic computer control system, gives you safety, convenience and efficiency not seen in Australia before.

To start with the Archer electronic solid state module controls every function and operating feature of the heater for safe and efficient operation.

During operation the independent twin H.S.I. ignition system controls the ignition cycle of each burner automatically to ensure trouble free automatic ignition (no pilot light or troublesome piezo ignition) for added reliability, safety and lower gas bills.

During operation the remote flame sensors constantly monitor the status of the flame for added safety. Archer's independent (H.S.I.) ignition system lets you select from 3 burner settings. Low, medium and high burn at the touch of a button from easy accessible controls for selection of your own comfort level and lowest operating cost.

Years of painstaking laboratory testing coupled with extensive in field trials have resulted in a truly reliable ignition system. Prior to start up of your heater it automatically purges any un-burnt gas prior to ignition for added safety.

The 3 speed fan which is automatically linked to each burner setting has been customised for optimum comfort and efficiency. The fan in the heater will not start operating until the heater has sufficiently warmed up. When you turn your heater off the fan will keep pushing warm air until all the built up heat in the heater has been extracted.

All your heaters operating modes can be viewed on the display monitor located behind the bottom front panel.

Additional safety features such as flame failure safety, overheating safety, automatic shutdown if power or gas fails and fan start/stop protection are all built into the Archer solid state electronic module for customising your heater for added safety, optimum comfort and efficiency to give you the comfort of feeling safe in your home.

Zero Clearance Installation

Another direct installation and safety feature derived from the Archer's revolutionary heat exchange system, is the zero clearance temperature achieved on the bottom, top, back and sides only of the heater, which allows the heater to be installed safely against combustible materials. The safety screen fitted to the large neo ceramic door glass will be welcoming news for parents with small children.



Bay Window Safety Grill



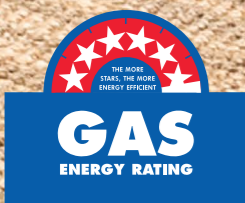
Standard Safety Grill - Flat Front



Simple ON/OFF operation

Thermostat Control

*All heaters are available with optional fully programmable remote thermostat.



IS 755 Stainless Steel Insert

Integrated Central Ducted Heating

Designed for total house coverage, uniform heat distribution throughout the whole house.

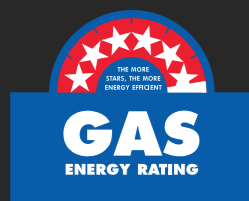
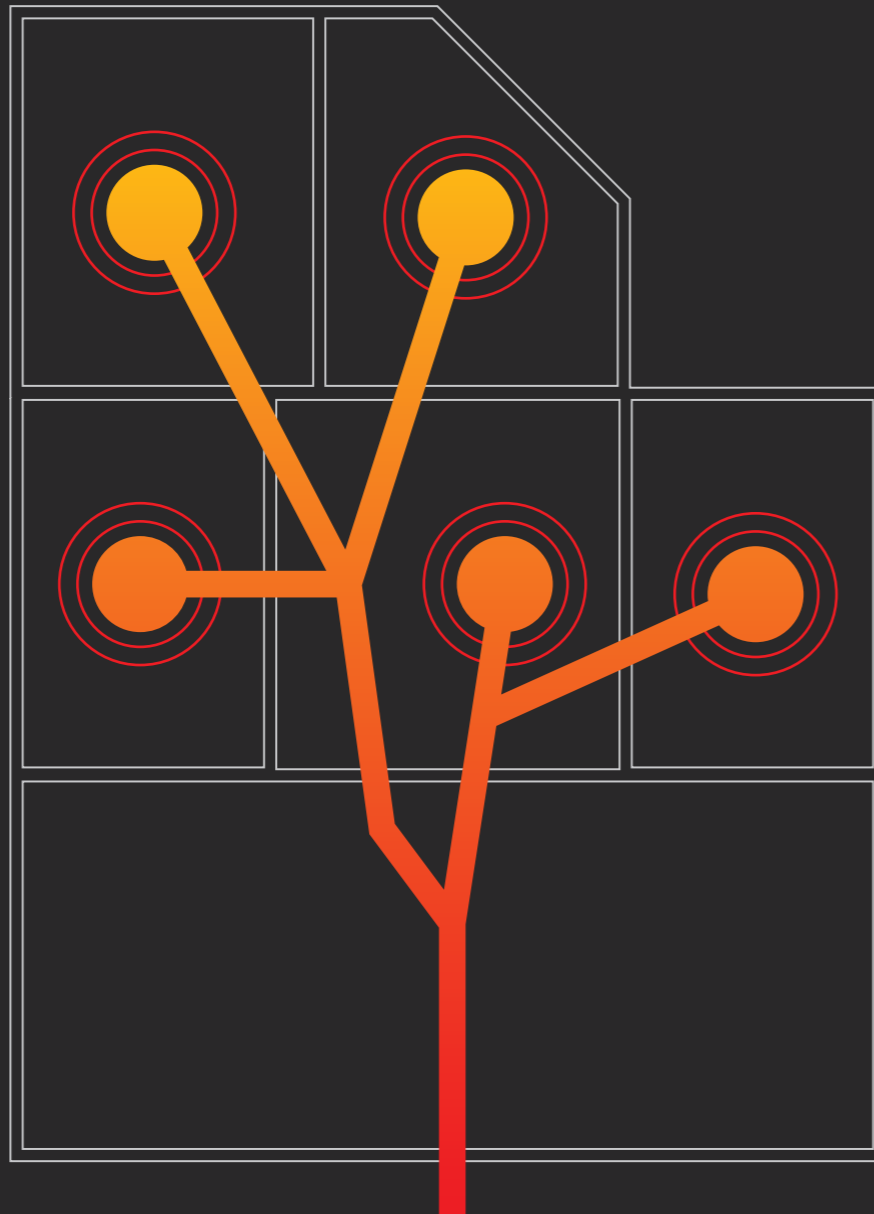
Introducing the most efficient Archer gas log fireplace heaters which are now available as a central heating fireplace system to heat your whole home.

Archer's central heating system for its models IS900 and IS700 extracts 93% of available heat generated by Archer's revolutionary triple heat exchange system and distributes that heat into different areas within your home. Providing quiet and efficient heating.

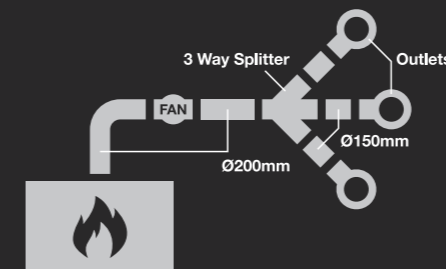
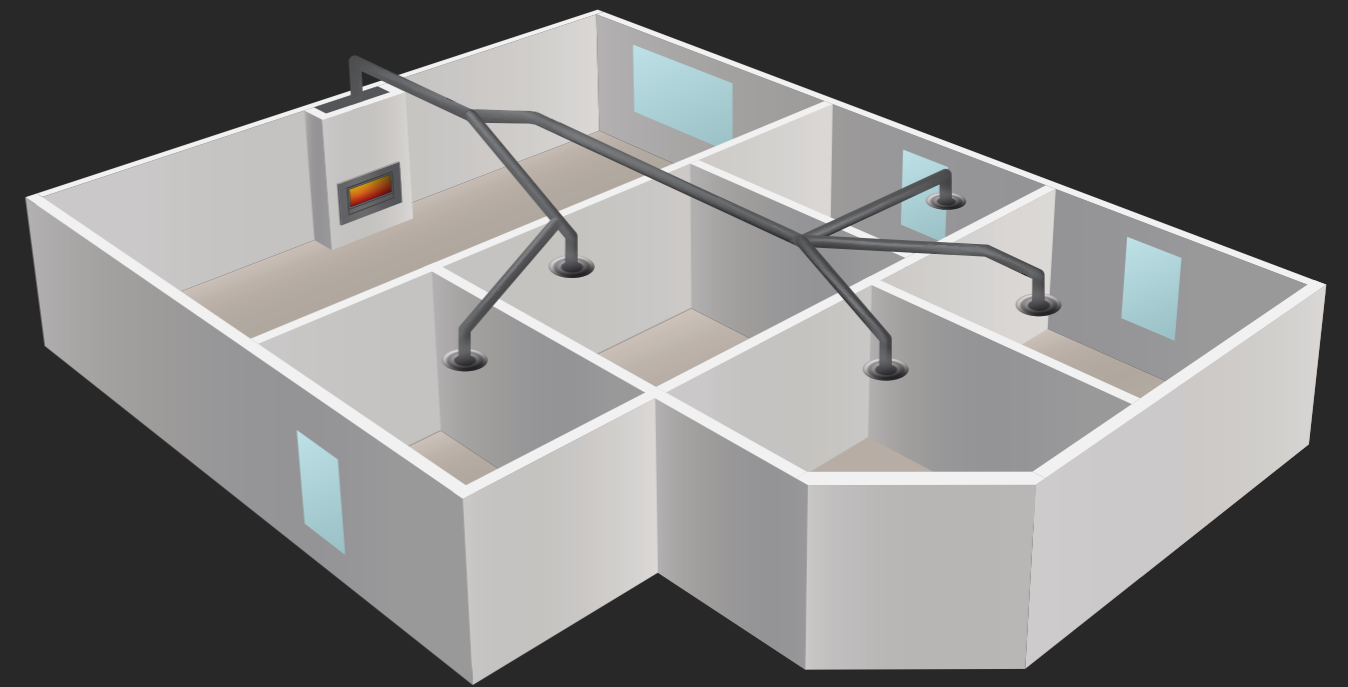
93% of heat available from your fireplace is efficiently distributed through the ducting system by an inline duct fan through ceiling or floor ducts located throughout your home.

Heating requirements for your home can be automatically adjusted by Archer's simple control system, allowing you to control the heat you require from your fireplace and ducting system.

Archer's central heating fireplace system has the flexibility through its revolutionary PVC fluing system that the fireplace can be installed anywhere in your home. There is a variety of options available for wall, floor or ceiling outlets for your ducting system, which you can choose to suite your home décor.

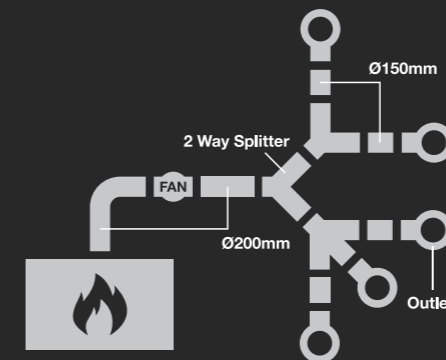


IS 905 Stainless Steel Insert



IS 700 Heating Capacity - 3 Ducts

| Number of Ducts | Approx. Maximum Kw |
|-----------------|--------------------|
| 1 | 2.65 |
| 2 | 2.29 |
| 3 | 2.30 |



IS 900 Heating Capacity - 5 Ducts

| Number of Ducts | Approx. Maximum Kw |
|-----------------|--------------------|
| 1 | 1.94 |
| 2 | 1.67 |
| 3 | 2.46 |
| 4 | 1.67 |
| 5 | 1.35 |

Inline Fan Placement

The inline fan can be installed either vertically or horizontally and must be installed 6 metres from the fire.

The inline fan can be suspended from framing members with provided springs and bracket to reduce the possibility of fan noise through vibration.

Typical fan placement are either roof, cavity or under floor.

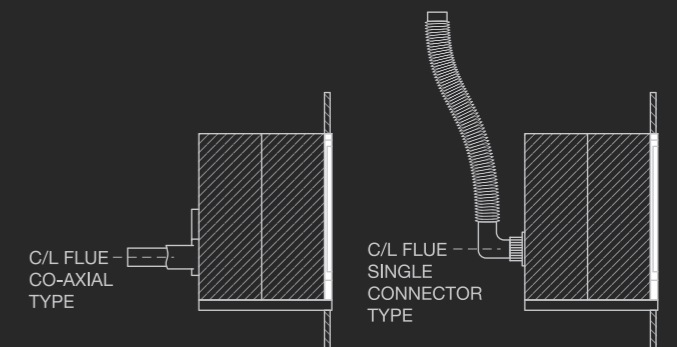
Ducting

The design as illustrated are examples only and can be fitted and installed as per individual requirements.

| Number of Ducts | IS900 | IS700 |
|-----------------|-------|-------|
| Recommended | 5 | 3 |
| Maximum up to* | 8 | 5 |

Fluing

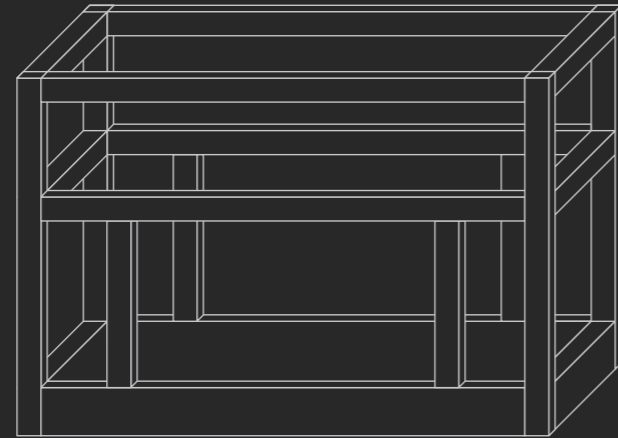
Two basic types of flue configuration can be used either horizontal, co axial flue or single 40mm PVC fluing system for more technical information see page 27 of this brochure for flue installations.



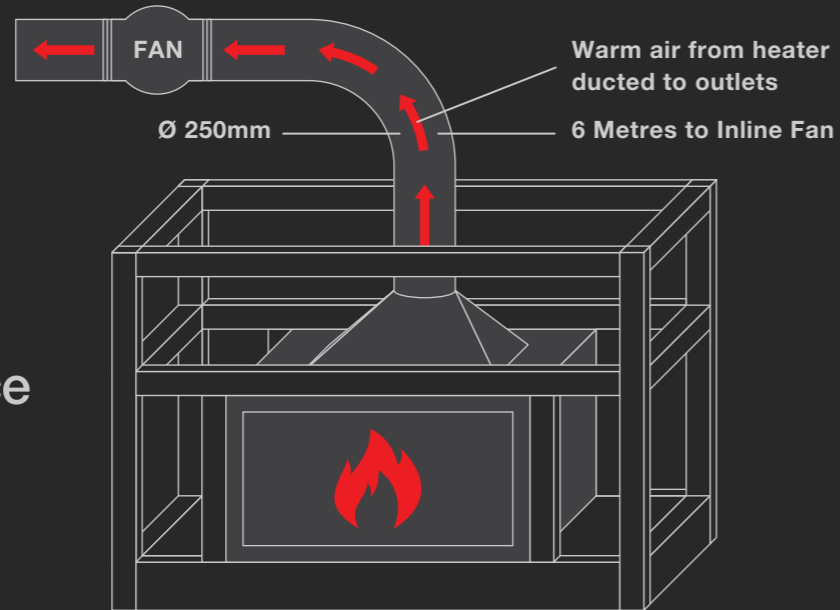
*Performance is subject to length of ducts, ceiling heights and house insulation.

Ducting Construction

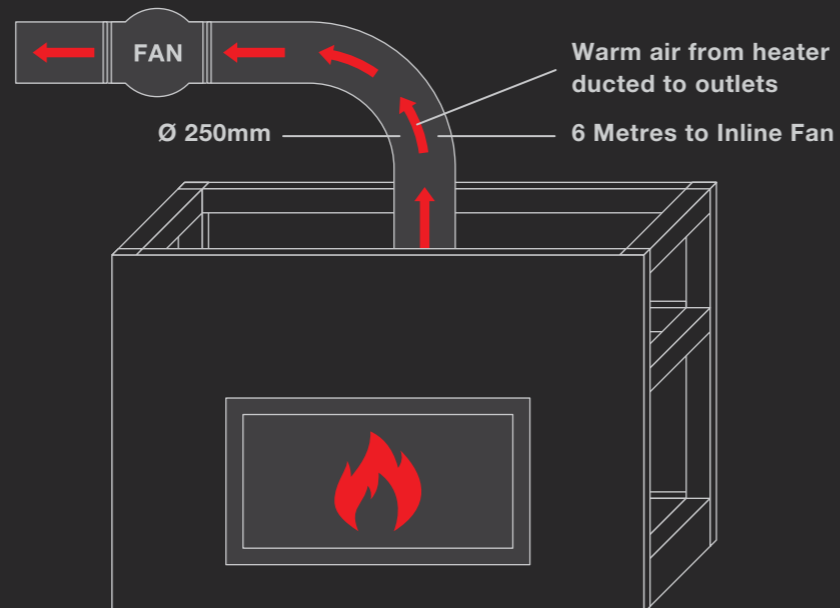
Wall Cavity



Ducting System, Off-Take and Fireplace



Finished Installation



FS 100 Color Charcoal



FS 700 With Beach Fire Log Set - Color Charcoal

FS 101 Color Metallic Brown with Gold Door and Optional Pedestal

Installation Advantages

Low cost versatile installation.

The Archer Gas Log Space Heater technology eliminates costs and flexibility on installations when compared to the installation of most other gas heaters, which require expensive and unsightly flue installations.

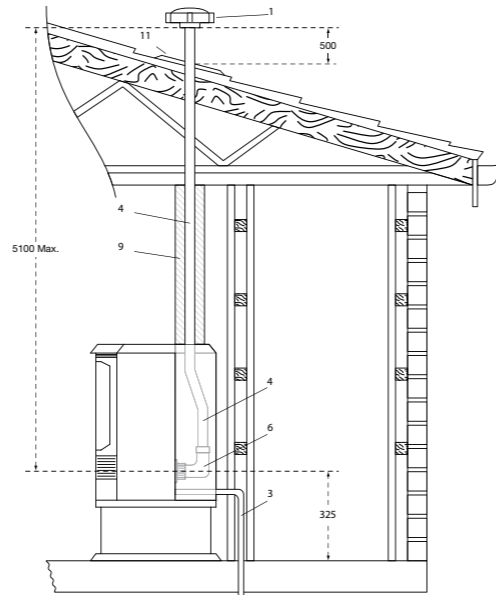
The Archer's revolutionary plastic power flue and plastic 40mm Ø PVC single flue system eliminates those costly installations and is ideal for high rise apartments, external and internal wall applications anywhere in your home and ideally can be used as a replacement for existing gas or oil space heaters.

The Archer Gas Log Space Heater due to its high efficiency with 92% heat extracted from Archer's revolutionary heat exchanger ensures that surface temperatures of the heater are kept extremely low to allow zero clearance installations without the added cost of

installing a zero clearance box, which allows you to create your own decorative fireplace at the lowest cost.

The PVC co-axial flue system will give you the added benefit of using external combustion air allowing the air in your home to remain fresh. Whilst the 40mm PVC single flue system gives you unlimited installation advantages.

See installation section on page 23 to discover how the Archer Gas Log Space Heater can be installed in your choice of location of existing masonry fireplace, external and internal wall applications, high rise apartments and created zero clearance fireplaces all due to the small bore PVC co-axial or single flue system available only with an Archer heater.



See page 23 for flue installation options

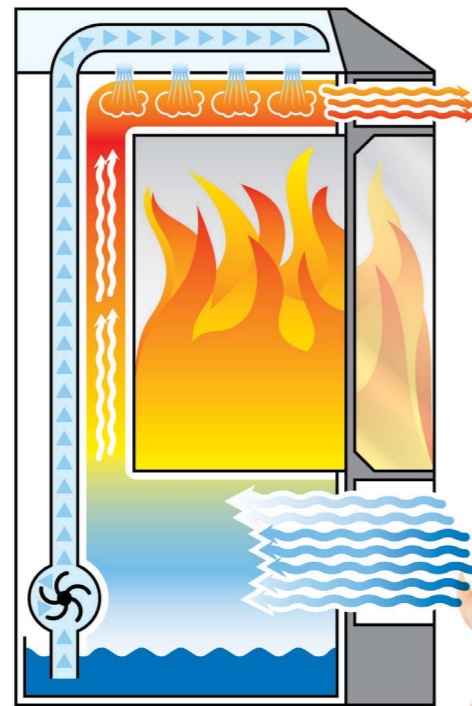
Automatic Humidifier Standard

Most gas heaters dry out the air in the room. Remember the bowls of water in front of the old gas heaters?

The Archer has ingeniously solved this problem with an automatic humidifier. Gas contains moisture which is normally expelled out the flue or chimney after combustion, but the Archer is so efficient by taking 92% of the heat out of the burnt gases that the moisture drops out and condenses in the back of the heater.

This water is collected in a tank which is then pumped up to a stainless steel holding tank where it evaporates in the stream of hot air, which is blowing into your home.

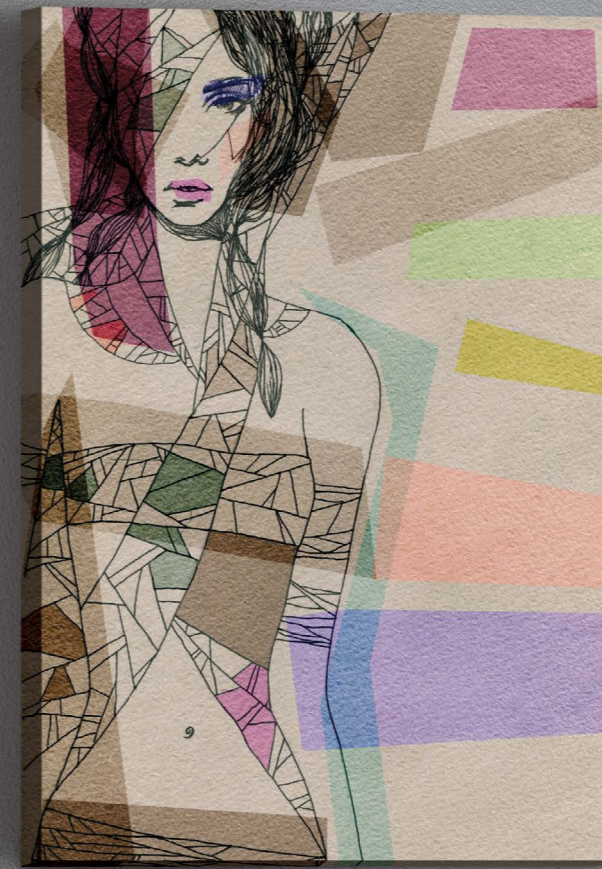
Air humidity is automatically restored. This feature is especially important for those with delicate throats or mild breathing difficulties.



Note: The amount of condensate build up depends on outside temperature, humidity levels, length of flue and heat settings. Long single vertical flue, will cause the automatic humidifier to activate more often, compared to short horizontal coaxial or single flue installations.



FSP 600 Free Standing Top Flued Heater - Color Charcoal



IS 750 Insert Flat Front Single Burner with Glass - Color Charcoal

FS 700 Free Standing Single Burner Flat Front with Glass - Colour Black

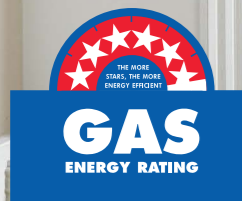
Beautiful Mantel Options

Select traditional or contemporary designs to suit your style

Aurora Climate Systems has a range of Mantel options available which complement your Archer heater, available in Corner Mantels or Full Mantels with, or without Mantel Base.

Colors available - White, Dark Oak, Cherry and Unfinished.

Suits Model Series 700 and Model IS 100/200 inserts.



IS 700 Insert Flat Front - Color Charcoal with Optional Corner Mantel Model MC-W
Color- White with Optional Corner Mantel Base, Model MCB-W - Color White



IS 203C Deep Fireplace Insert. Powder Coated - Color Rivergum with Chrome Door Optional IS 002PC
Small Surround Shown with Optional Full Mantel MC-CH - Color Cherry and Opt. MCB-CH Mantel Base.

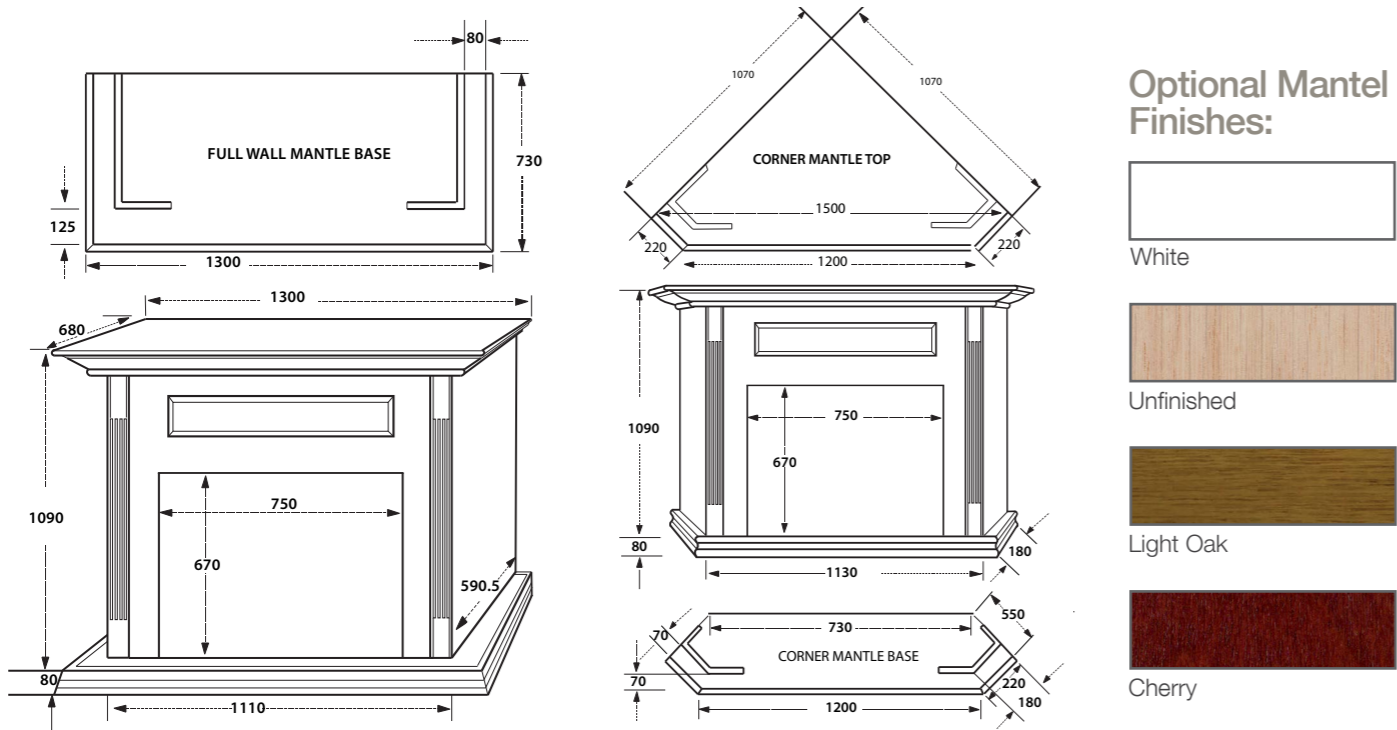


IS 704 Insert Flat Front - Color Charcoal Shown with Stainless Door and Optional IS007, 3 Sided Surround Shown with Full Mantel Model MW-DO - Color Dark Oak and Opt. MWB-DO Mantel Base.



IS 203C Deep Fireplace Insert. Powder Coated - Color Hunter Red with Gold Door and Optional IS 002PC Small Surround and Optional MW-DO - Dark Oak Mantel

Mantel Specifications



Colours to Suit Your Home Décor

Select from our optional range or we can customise your colour selection

Archer offer a choice of six optional colours as shown below, that cover neutral and traditional colour themes. If you require a colour that doesn't appear in our optional selections, our manufacturing facility allows us to customise your colour selection to your specific requirements. Please consult with your dealer to establish a formal quotation for this customised service.

Powder Coat Finishes

Additional colours available on request



RiverGum



Silver Pearl



Hunter Red

Paint Finishes



Metallic Brown



Charcoal



Pewter

Optional Heater Surrounds

Select from traditional or contemporary designs to suit your style

1. Flat Front bolted Surround available in Stainless Steel or Charcoal
 Dimensions:
 H 694
 W 949
 D 15mm



2. Flat Front with 3 sided Surround available in Stainless Steel or Charcoal
 Dimensions:
 H 742
 W 885
 D 7mm



3. Standard Surround available in two sizes for Bay Window Heater.
 Small:
 H 758
 W 900
 D 25mm
 Large:
 H 858
 W 1110
 D 25mm



Technical Specifications

Free Standing

Free Standing with Pedestal

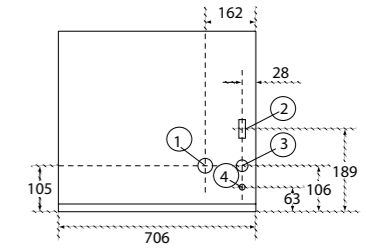
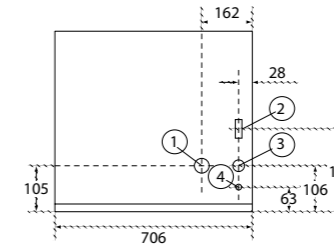
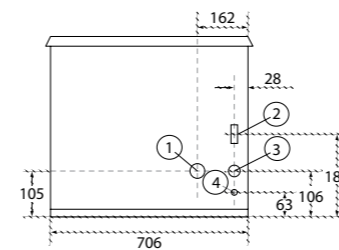
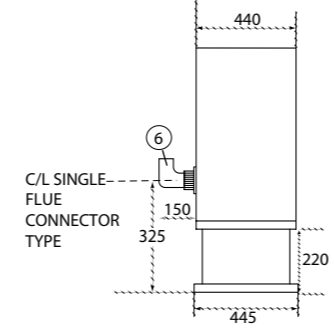
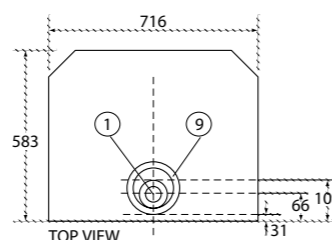
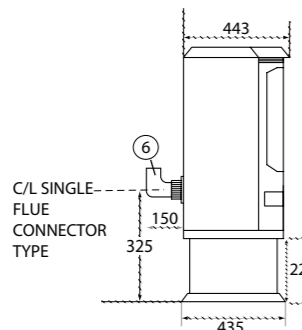
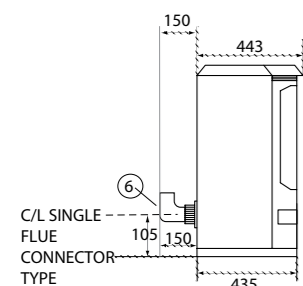
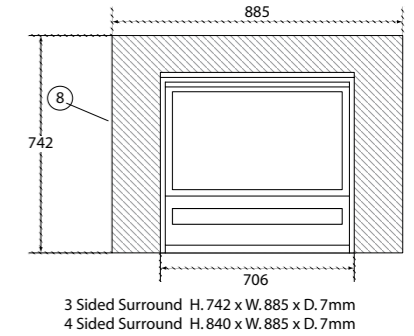
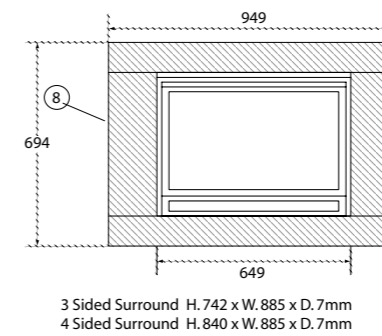
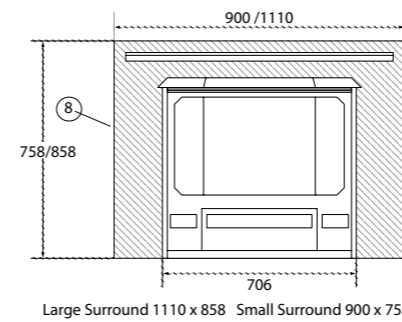
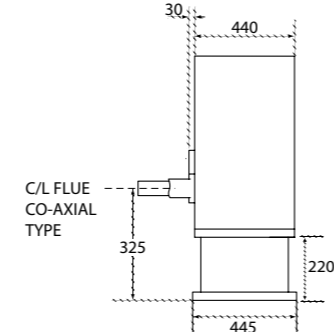
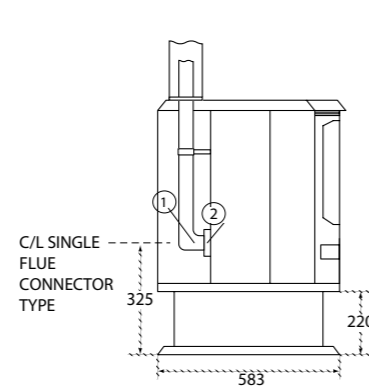
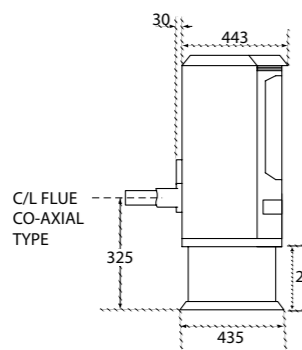
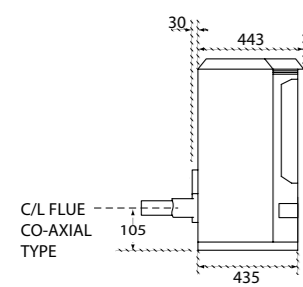
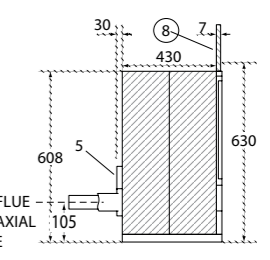
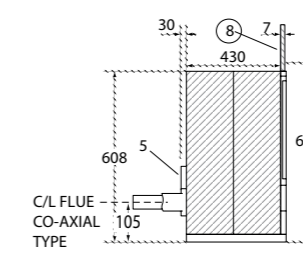
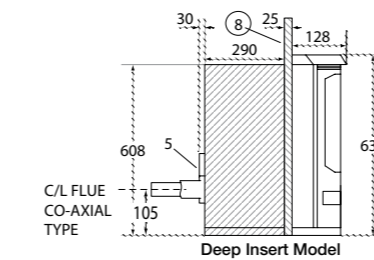
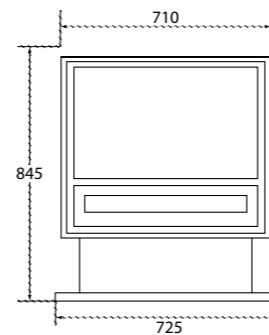
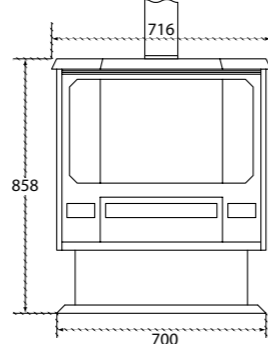
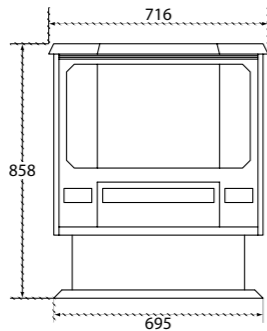
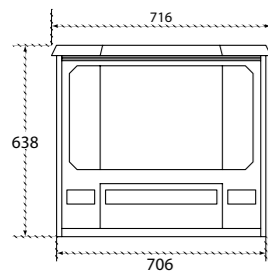
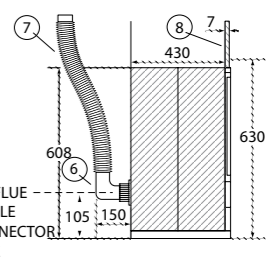
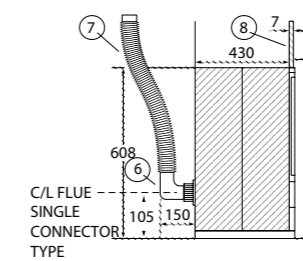
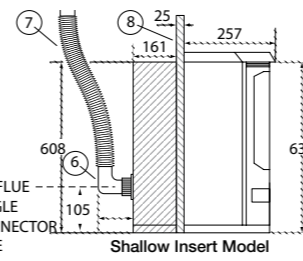
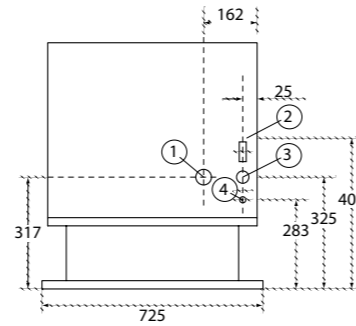
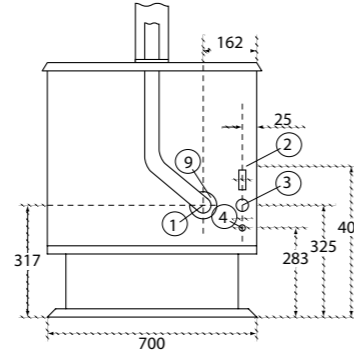
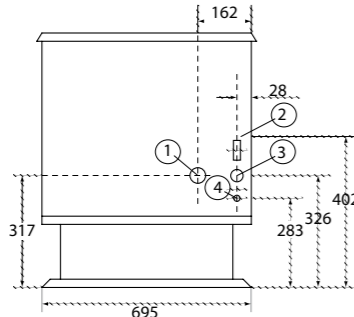
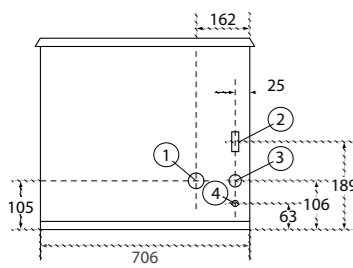
Free Standing with Top Flue

Free Standing Flat Front

Insert - Shallow & Deep

Bolted Surround

Flat Front 3 Sided Surround



SPECIFICATION KEYS:

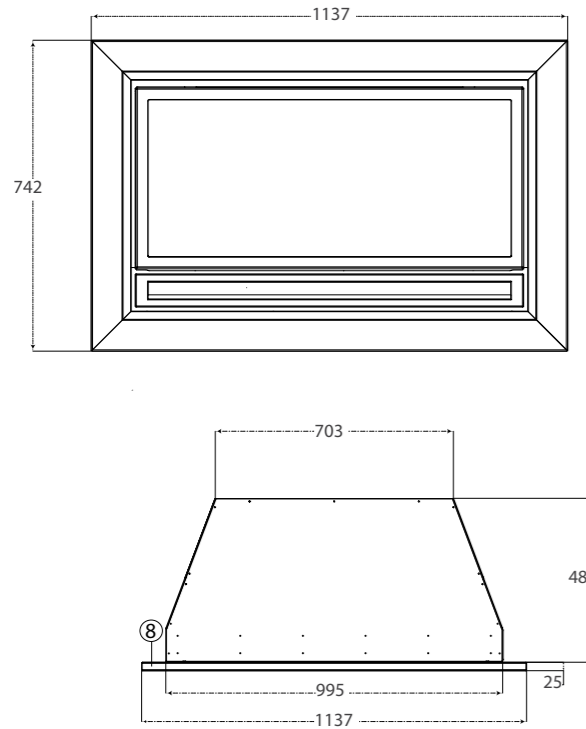
- ① Flue Outlet Co-axial (outside 65mm, inside 40mm) single flue 40mm Ø. Flexible Flue 40mm Ø.
- ② Air Inlet
- ③ Electric Cord
- ④ 1/2" BSP Connection (inside)
- ⑥ 90°/40mm PVC Elbow
- ⑦ Flexible PVC Pipe
- ⑧ Heater Surround (see page 19 for options)
- ⑨ Flue Locating Ring 6" (150mm).

SPECIFICATION KEYS:

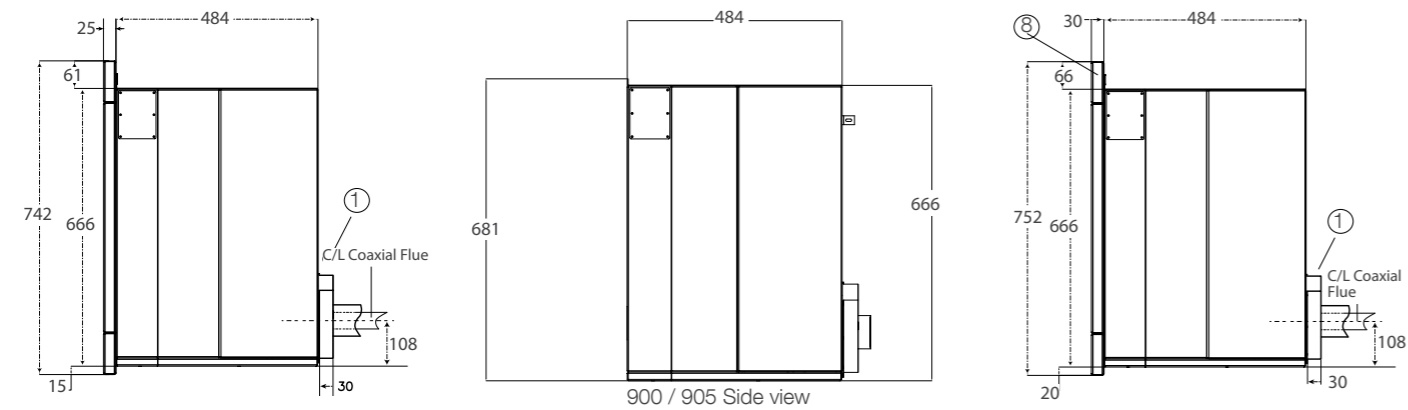
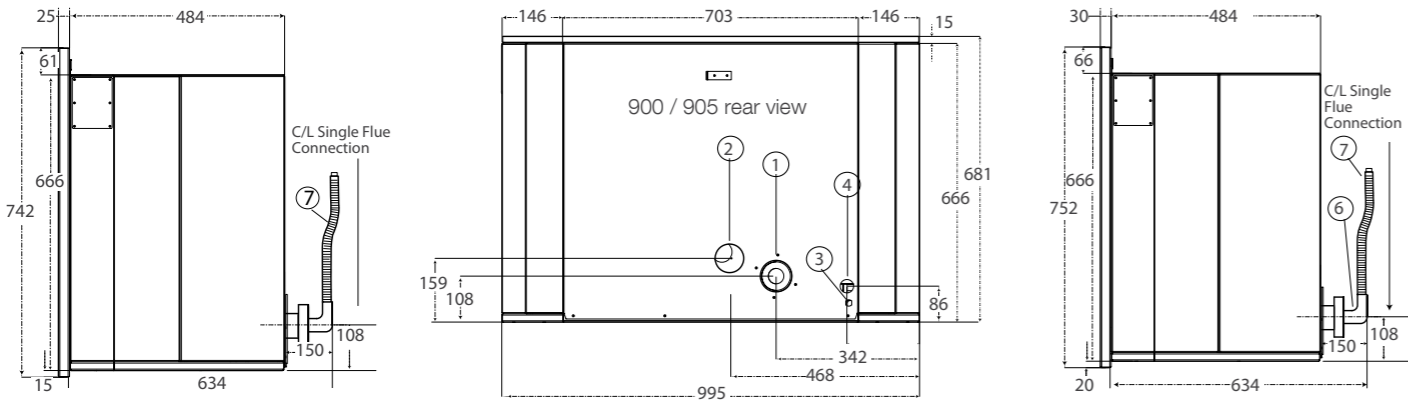
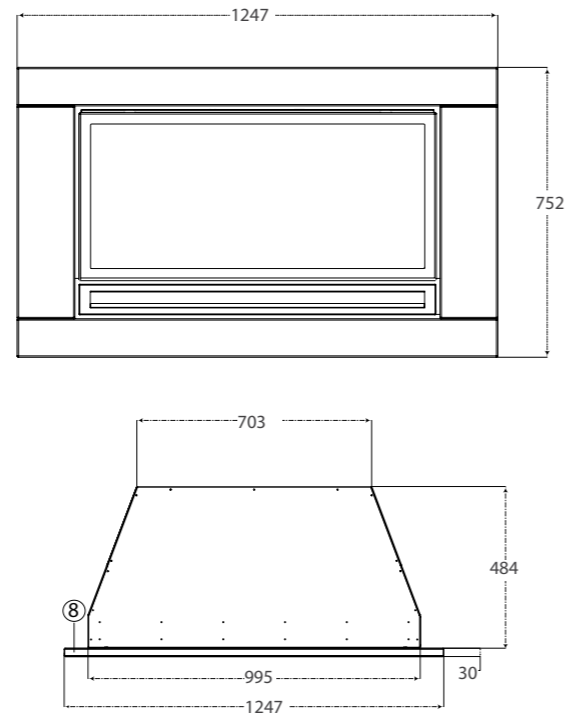
- ① Flue Outlet Co-axial (outside 65mm, inside 40mm) single flue 40mm Ø. Flexible Flue 40mm Ø.
- ② Air Inlet
- ③ Electric Cord
- ④ 1/2" BSP Connection (inside)
- ⑥ 90°/40mm PVC Elbow
- ⑦ Flexible PVC Pipe
- ⑧ Heater Surround (see page 19 for options)
- ⑨ Flue Locating Ring 6" (150mm).

IS 900 / 905 Specifications:

IS 900 Charcoal Picture Frame Surround



IS 905 All Stainless Steel or Charcoal Bolted Surround



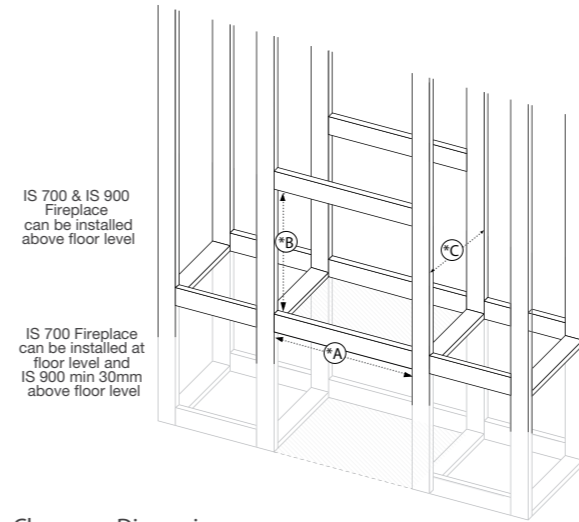
SPECIFICATION KEYS:

- ① Flue Outlet Co-axial (outside 65mm, inside 40mm) single flue 40mm Ø. Flexible Flue 40mm Ø.
- ② Air Inlet
- ③ Electric Cord
- ④ 1/2" BSP Connection (inside)
- ⑥ 90°/40mm PVC Elbow
- ⑦ Flexible PVC Pipe
- ⑧ Heater Surround.

Flue & Installation Options

To suit all Archer Heater models.

Created Fireplace



IS 700 & IS 900 Fireplace can be installed above floor level

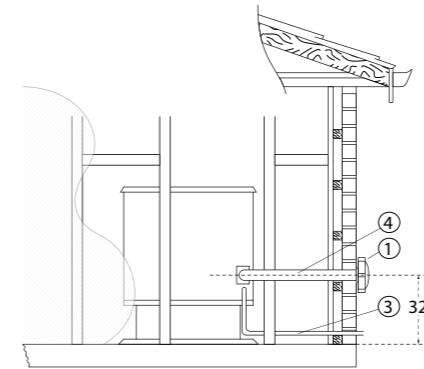
IS 700 Fireplace can be installed at floor level and IS 900 min 30mm above floor level

Clearance Dimensions

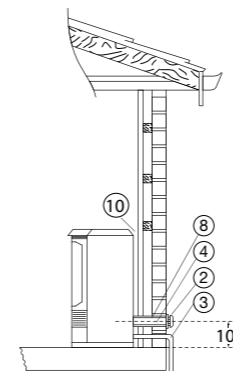
*Model I.S. 700 -A w= 760 B h= 655 C d= 580

*Model I.S. 900 -A w= 1050 B h= 715 C d= 630

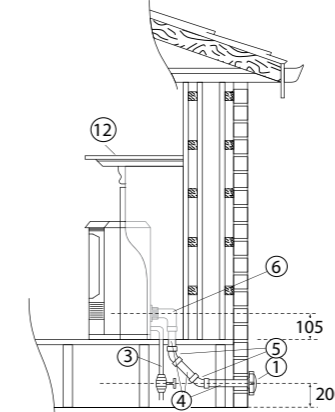
Side Wall



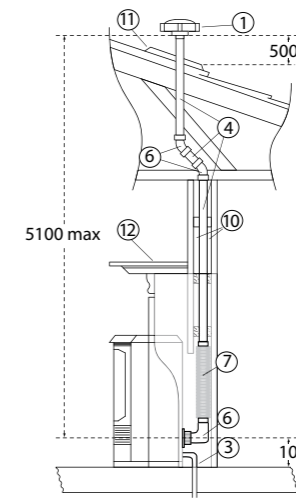
External Wall



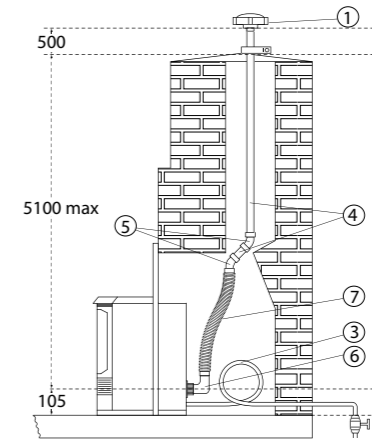
Under Floor



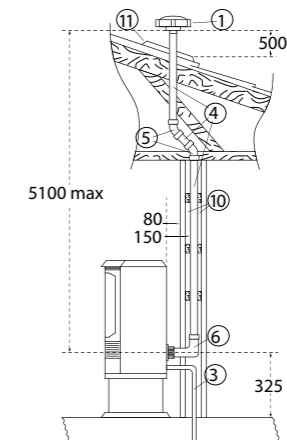
Internal Wall
Created Fireplace



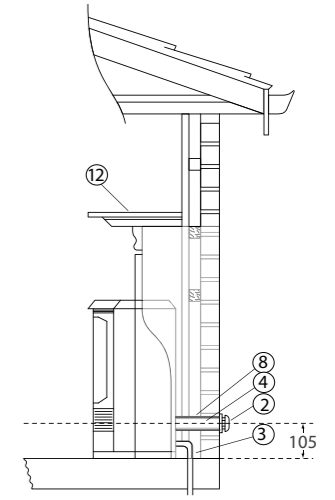
Masonry Internal



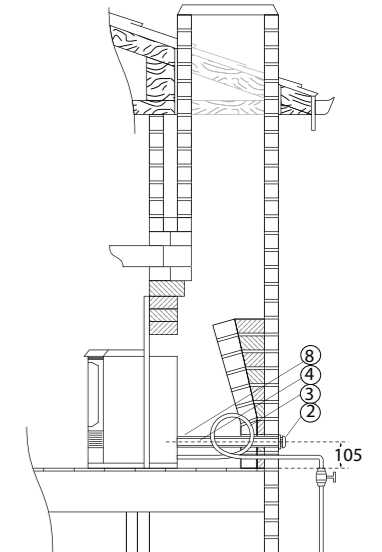
Internal - Vertical



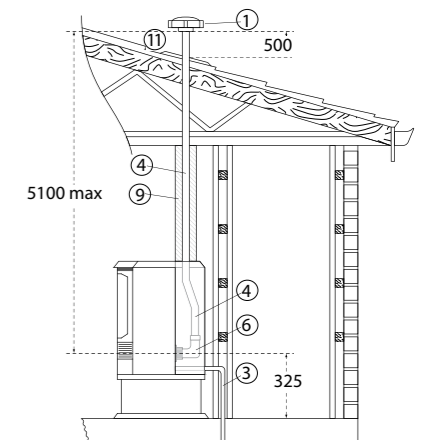
External Wall
Created Fireplace



Masonry External



Top Flue FSP600



SPECIFICATION KEYS:

- ① Single Cowl
- ② Co-axial Cowl
- ③ 1/2" (12.7mm) Ø BSP gas connection (flexible)
- ④ 40mm Ø PVC pipe
- ⑤ 40mm 45° PVC elbow (not supplied)
- ⑥ 40mm 90° PVC elbow
- ⑦ 50mm Ø flexible pipe
- ⑧ PVC co-axial pipe 65mm Ø 40 mm Ø inner
- ⑨ 6" (150mm) Ø Outer decorative flue pipe.
- ⑩ Zero clearance installation to combustibles
- ⑪ Flashing.
- ⑫ Mantel.



Specifications

| | |
|--|---------------------------------------|
| Model Series 3 | Freestanding and Insert |
| Input | Nat/LPG High 30Mj/h |
| | Nat/LPG Medium 20Mj/h |
| | Nat/LPG Low 10Mj/h |
| Output | High Kw 7.6 Med 5.2 Kw Low 2.5 Kw |
| Combustion Efficiency | 92% |
| Fan | Automatic 3 speed |
| Ignition | Automatic H.S.I. |
| Heat Settings | 3 Settings - High/Medium/Low |
| Automatic Humidifier | Standard |
| Heating Areas* | Up to 180 square meters (18 squares)* |
| Clearances* | Zero clearance to all surfaces** |
| Energy Star Rating | 5.5 |
| Tested to A.G.A. Code AS4553 - 2008 Certificate No. 5446 | |

Specifications

| | |
|--|---------------------------------------|
| Model Series 7 | Insert Flat Front and Freestanding |
| Input | Nat/LPG High 30Mj/h |
| | Nat/LPG Medium 18Mj/h |
| | Nat/LPG Low 12Mj/h |
| Output | High Kw 7.6 Med 4.6 Kw Low 3 Kw |
| Combustion Efficiency | 92% |
| Fan | Automatic 3 speed |
| Ignition | Automatic H.S.I. |
| Heat Settings | 3 Settings - High/Medium/Low |
| Automatic Humidifier | Standard |
| Heating Areas* | Up to 180 square meters (18 squares)* |
| Clearances | Zero clearance to all surfaces** |
| Energy Star Rating | 5.7 |
| Tested to AGA Code AS 4553 - 2000 / AG 103 - 2000 AS 5601 - 2004 | |
| Approval No. GSCS 20025 | |

Specifications

| | |
|---|---------------------------------------|
| Model Series 9 | Insert Flat Front |
| Input | Nat/LPG High 45 Mj/h |
| | Nat/LPG Medium 25Mj/h |
| | Nat/LPG Low 20 Mj/h |
| Output | High 11.2 Kw Med 8.2 Kw Low 5 Kw |
| Combustion Efficiency | 90% |
| Fan (Dual) | Automatic 3 speed |
| Ignition | Automatic H.S.I. |
| Heat Settings | 3 Settings - High/Medium/Low |
| Automatic Humidifier | Standard |
| Heating Areas* | Up to 250 square meters (25 squares)* |
| Clearances | Zero clearance to all surfaces** |
| Energy Star Rating | 5.4 |
| Tested to AGA Code AS4553 - 2008 Certificate No 13368 | |

Specifications

| | |
|--|---------------------------------------|
| Model Series 720 | Insert and Flat Front |
| | Single Burner |
| Input | 20Mj/h |
| Output | 5.5 Kw |
| Combustion Efficiency | 92% |
| Fan | Automatic 3 speed |
| Ignition | Automatic H.S.I. |
| Heat Settings | 5 Settings |
| Automatic Humidifier | Standard |
| Heating Areas | Up to 100 square meters (10 squares)* |
| Clearances | Zero clearance to all surfaces** |
| Energy Star Rating | 5.9 |
| Tested to AGA Code AS 4553 - 2008 Certificate No 8198G | |

Note * Heating Capacity may vary depending on heater model selection and to climate, home design, heater location, ceiling height, and insulation etc.

Note** Heater clearances:
Insert models Series 3, 7 & 9 require minimum clearance of 25mm side and top for easy removal of appliance.

The Archer Warranty

Aurora Climate Systems stands behind their products and gives every purchaser this guarantee.

| | |
|-----------------|--|
| Heat Exchanger | 5 years parts/1 year labour |
| Main Fan | 2 years parts/1 year labour |
| Flue Fan | 2 year parts/1 year labour |
| All other parts | 2 year parts/1 year labour |
| Glass | Accidental breakage of glass excluded. |

Head Office:

AURORA CLIMATE SYSTEMS
71-73 Overseas Drive
NOBLE PARK VICTORIA 3174
telephone. 61 3 9795 8895
facsimile. 61 3 9701 2088
e-mail. sales@auroraclimatesystems.com.au
web. www.auroraclimatesystems.com.au