

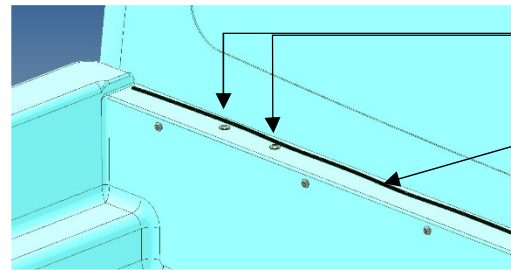
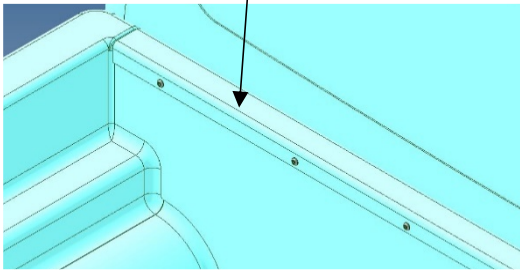
HARD LID



FITTING INSTRUCTION - VARIATIONS

2025 BYD Shark Infill Panel / hinges

1. Remove the front plastic capping on the tub. Re-insert the factory fasteners into the original holes.



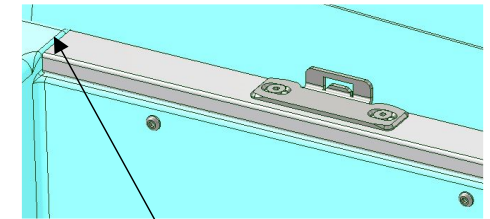
2. Sit the fitting jig in place as standard, mark and drill with a $\varnothing 5$ drill bit. Drill out holes to $\varnothing 9$ and paint the exposed metal for rust protection.

3. Fit the M6 s/s rivnuts using the correct insertion tool.

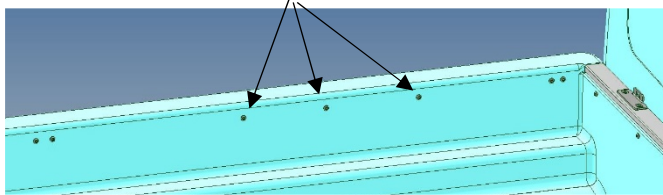
Run a bead of silicon along the front of the tub.



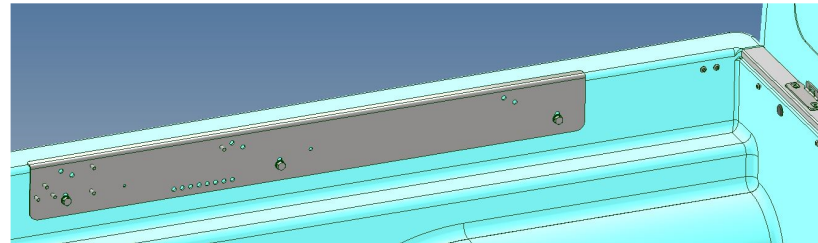
4. Sit the infill in place (large holes down). Fit the hinges using 4 @ M6 x 35 csk socket screws (these will hold the infill in place).



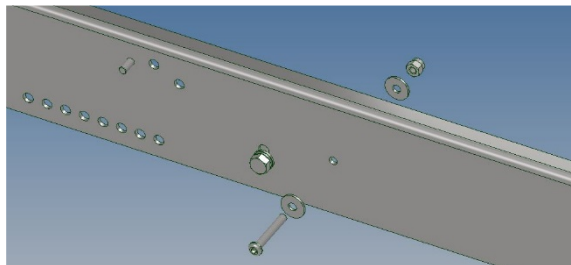
6. Remove the 3 middle bolts from the side caps.



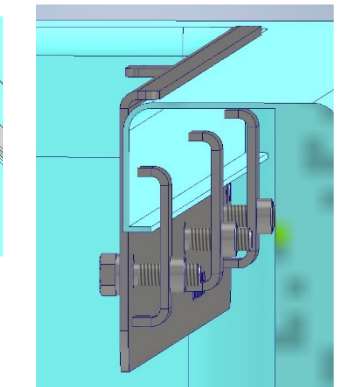
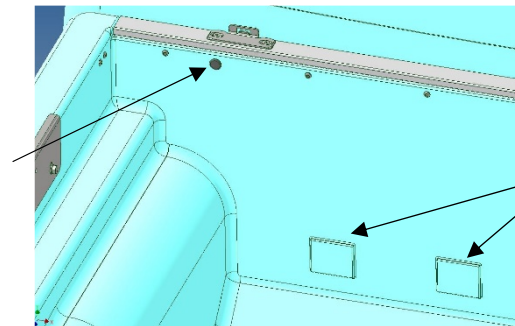
7. Fit the side rails as per standard using clamp brackets.



8. Drill a $\varnothing 6.5$ hole through the side of the tub and fit an M6 x 40 button head screw, 2 x penny washers and 1 x nylock nut to prevent any movement on the plastic caps.



9. Insert 2 x rubber grommets into the large holes in the front of the tub.



10. Seal around the 4 x cover plates in the front of the tub to prevent water ingress.