

# HARD LID

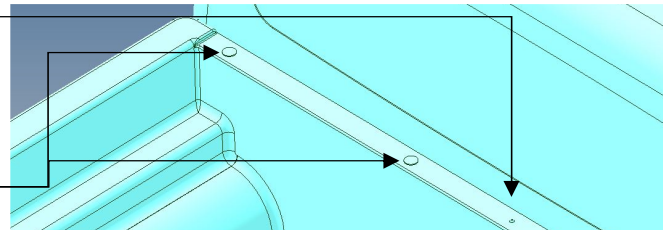


## FITTING INSTRUCTION - VARIATIONS

### 2025 KIA Tasman Infill Panel / hinges WITH TUB LINER

1. Find the centre of the tub, drill a  $\varnothing 5$  hole and insert a rivet through the liner & tub to secure the liner in place.

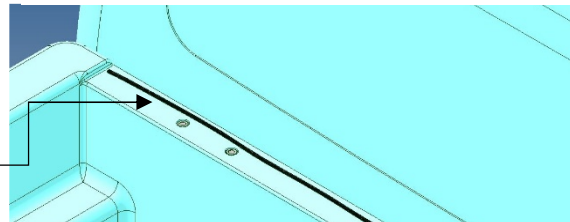
2. Remove the 4 plastic clips from the front of the tub liner.



4. Drill a clearance hole (approx.  $\varnothing 16$ ) in the liner to allow the rivnut to reach the top of the tub.

5. Drill out the holes in the tub to  $\varnothing 9$ .

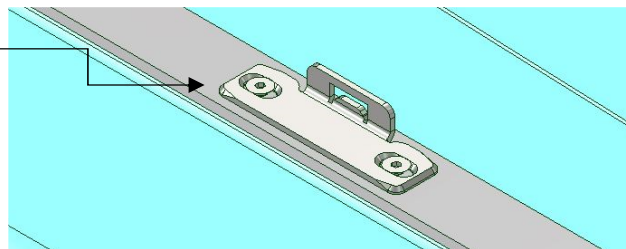
Paint the holes for rust protection and insert rivnuts.



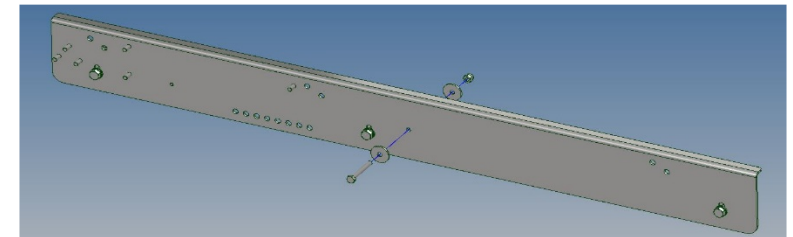
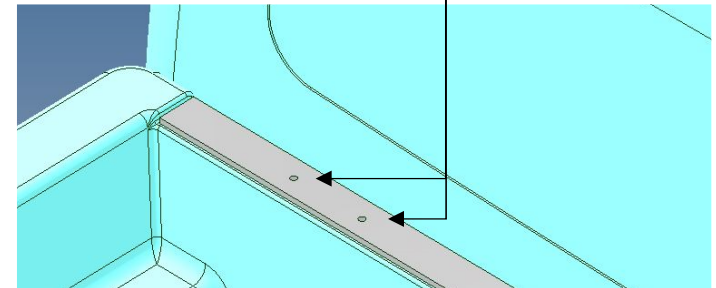
6. Run a bead of sealant along the top of the liner at the front.

7. Sit the 40 x 6 infill in place.

8. Fit the hinges etc. as per standard fitting videos except using M6 x 35 csk socket head screws (these will hold the infill in place).



3. Sit the fitting jig in place as standard, mark and drill with a  $\varnothing 5$  drill bit.



9. Remove the 2nd plastic clip back from the cab on the side of the tub. Insert an M6 x 25 socket screw / M6 penny washer (through side rail / tub liner) M6 penny washer / M6 nylock nut in each side rail after fitting to lock in place.

#### If the ute has NO tub liner:

- Drill and rivnut hinges as standard.
- Run a bead of sealant across the front of the tub.
- Sit 40 x 12 infill (or 2 @ 40 x 6 infills) in place
- Hinges and locking screw detail as left and above.