

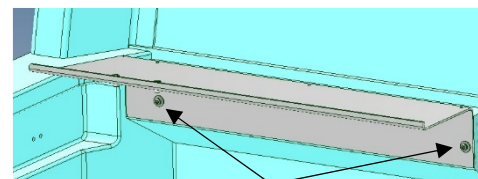
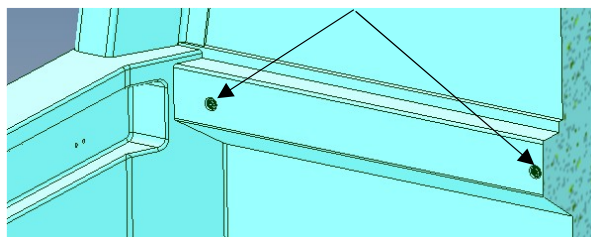
HARD LID



FITTING INSTRUCTION - VARIATIONS

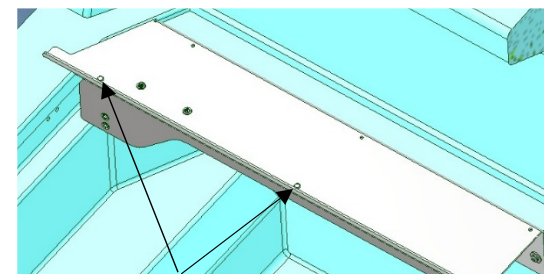
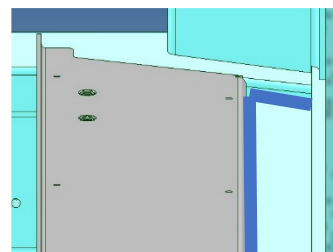
2025 Geely Riddara Infill Panel & side rails

1. Remove 3 bolts from the front of the tub.



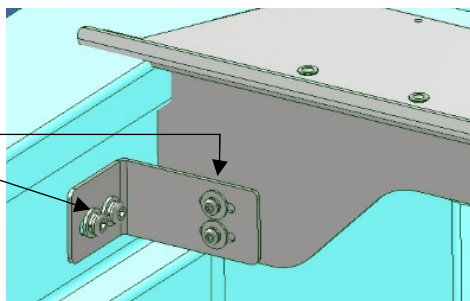
2. Fit infill using 3 @ M6 x 40 S/S button head socket screws / spring & penny washers.

3. Seal infill (shown in blue).

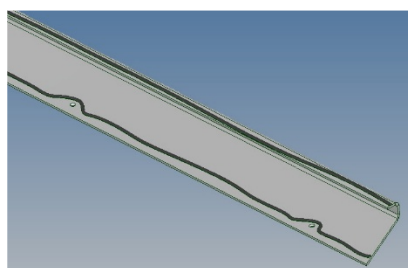


4. Rivet infill stiffener in place using 4 @ Ø5 S/S rivets.

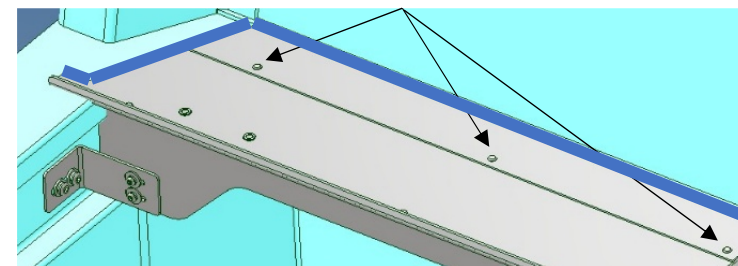
5. Remove the front tie hooks and bolt the stiffener brackets in place using 2 @ M6 x 25 S/S button head socket screws, 2 @ M8 x 25 S/S button head socket screws / spring & penny washers (per side).



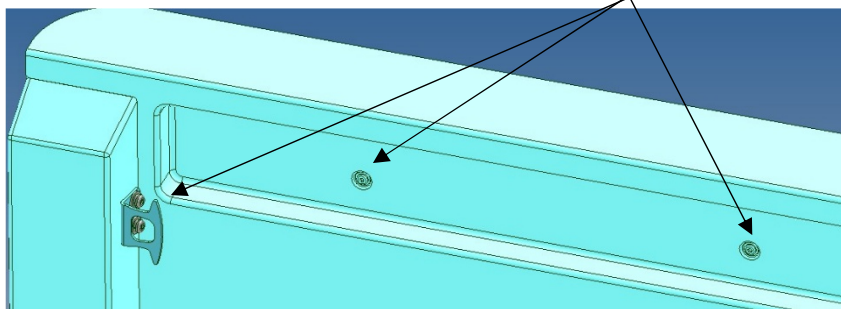
6. Run a bead of sealant along both faces of the 2mm ali infill.



7. Sit the 2mm ali infill panel in place. Align the Ø5 holes to the main infill panel using the Ø5 S/S rivets supplied, pull up all 5 rivets.



9. Remove the rear tie hooks and 2 side bolts.



Refer to standard fitting instructions for setting locks, etc.

10. Fit side rails using 2 @ M6 x 40 S/S button head socket screws / spring & penny washers. Refit rear tie hooks using 2 @ M8 x 40 S/S button head socket screws / spring & flat washers.

8. Seal all joins & gaps (shown in blue). Smooth off for a nice finish.

