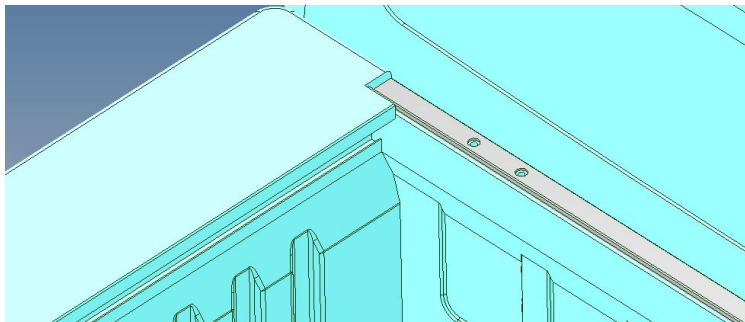


HARD LID



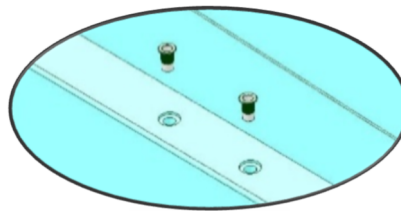
FITTING INSTRUCTION - VARIATIONS RAM 1500 with RAM boxes Infill Panel / hinges / side rails

1. Sit the fitting jig in place as standard, mark and drill with a $\varnothing 5$ drill bit.

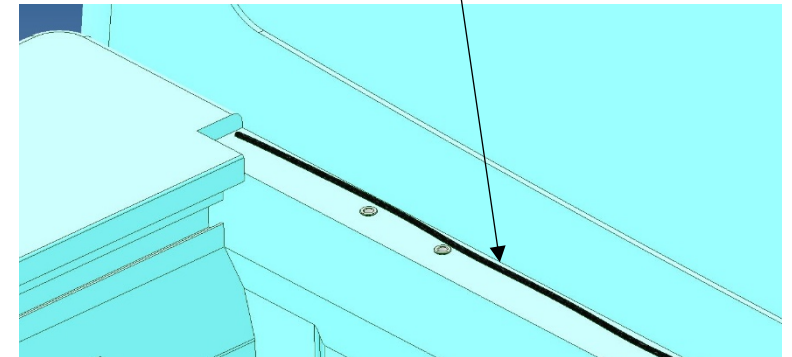


2. Drill out the holes in the tub to $\varnothing 9$.

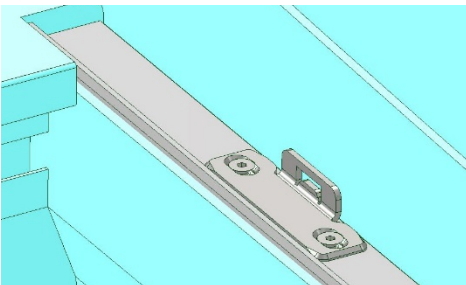
Paint the holes for rust protection and insert the M6 s/s rivnuts.



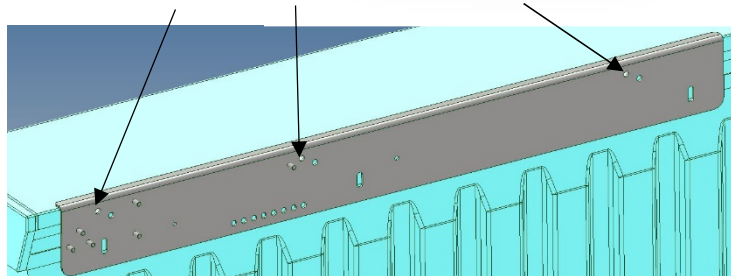
3. After fitting the M6 s/s rivnuts, run a bead of sealant along the top of the tub at the front.



4. Fit the infill (note the orientation) & hinges etc, as per standard fitting videos except using M6 x 35 csk socket head screws (these will hold the infill in place).



5. Sit the side rail in its correct position, mark the 3 holes for the rivnuts and drill pilot holes with a $\varnothing 5$ drill.



6. Drill out the holes to $\varnothing 11$. Paint the holes for rust protection and insert the M8 s/s rivnuts.

7. Fasten the side rail to the tub using 6 @ M8 x 30 button head socket screws (3 each side of the tub).

8. Fit the self-adhesive backed 'D' seal to each side of the tub.

