

Luisa Holden SWA

Professional Artist & Tutor



Materials provided on the workshop

- Acrylic paints
- Watercolours
- Acrylic inks
- Acrylic mediums
- Mixed Media paper
- Canvas
- Collage material
- Inktense pencils
- Oil pastel and soft chalk pastels
- Catalyst Wedge & Colour Shapers
- Caran D' Ache Neocolor Crayons
- Derwent Drawing Pencils
- ArtGraf
- Charcoal
- Stabilo Woody pencils
- Acrylic brushes

Loose & Expressive Turner Abstractions

- a **One to One, Intensive Full Day Workshop**
(Acrylic with Mixed Media)

Exploring the colour palettes and characteristics of J M W Turner's paintings, we will be working in typical Turner colours such as Gamboge, Prussian Blue and Iron Oxides. We will explore Turner's characteristic, expressive brushwork, dashes of accent colour and glowing glazes.

Although Turner (1775-1851) is associated with the genre of Romanticism, he was in fact a pioneer of abstraction and he continues to inspire contemporary and abstract painters today. With undefined forms and evocative colour palettes employed to capture feeling rather than reality/subject matter, Turner's revolutionary approach still looks fresh and contemporary today.

On this workshop we will work on multiple studies, using an abstract/impressionistic approach. Later on in the day, we will also produce a larger, finished piece on canvas using reference material and step by step guidance.

We will look at muted complementaries, capturing light and employing earthy glazes, using water based mixed media including acrylics, watercolours and inks. We will also explore toned papers and tinted grounds which Turner would sometimes work on.

Copyright free reference material is provided at the workshop plus my own pre-prepared painting studies ('inspiration board') to help form the basis of studies on paper. We will also look at collage and text. Typically, students generally produce a minimum of 5 paintings during the course of one workshop session so the day is quite intensive but relaxed and fun!

My method of teaching focuses on loosening up and taking risks to promote spontaneity and energy. I will paint alongside you and give you tips and advice throughout. **All materials are provided including painting supports.**

What you will learn:

- What colour palettes Turner used including modern day equivalent colours
- How to simplify colour palettes, juxtaposing tones and complementaries to create drama and a sense of impressionism
- Using mid-toned neutral value papers and tinted supports to assist spontaneous value relationships
- Employing energetic brushwork to capture movement and atmosphere, including adding characteristic 'dashes' of colour
- Collaging poetry and meaningful text into your work for added self-expression (text will be provided but feel free to bring any of your own that you are prepared to tear and stick!)
- Exploring abstraction, simplification and exciting mark making
- Known as the "Painter of Light", we will look at the way Turner used tonal contrasts and glazes to help our work 'glow'!
- How to employ a variety of mixed media alongside acrylic

- Palette knives
- Art reference material

Overview

The workshop is held in my home in Nantwich, Cheshire, where you will be welcome to take a tour of my studio. Parking is available.

The workshop is on a one-to-one basis so that I can give you my full attention and mentoring throughout the day. Because I offer one-to-one tuition, a mutual day can be agreed.

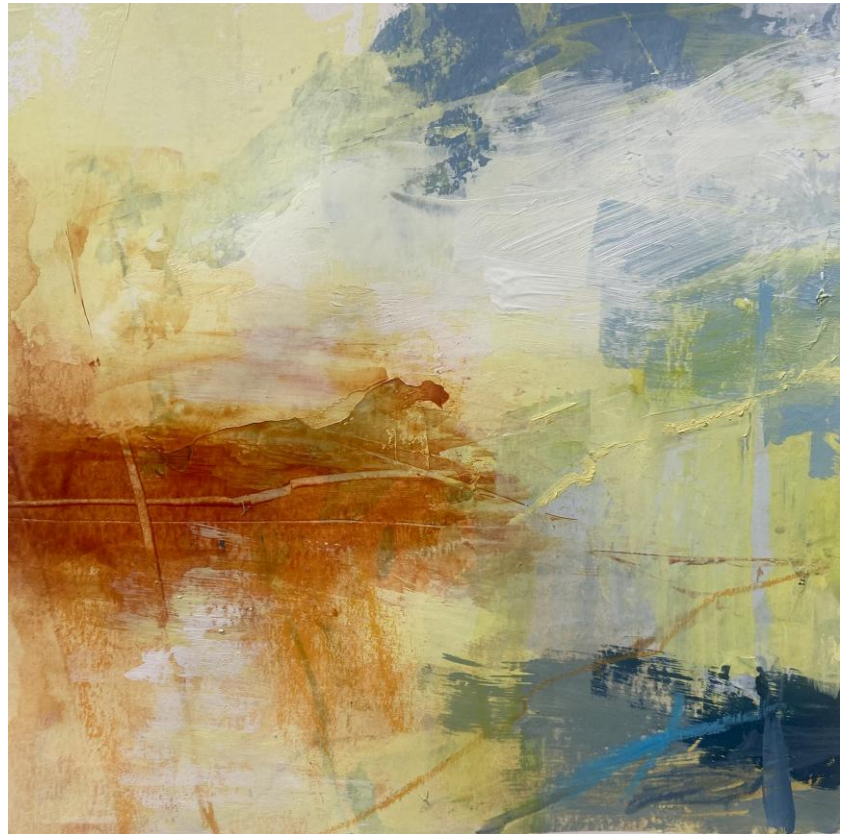
If you are travelling from further afield and are making a holiday of your visit, you may prefer to extend the workshop to a two-day workshop where we will be working on more projects, developing themes and experimenting with more mixed media.

There will be a discount available if you wish to book an extended, two-day workshop (*doesn't apply to split theme workshops). Please contact me for details.

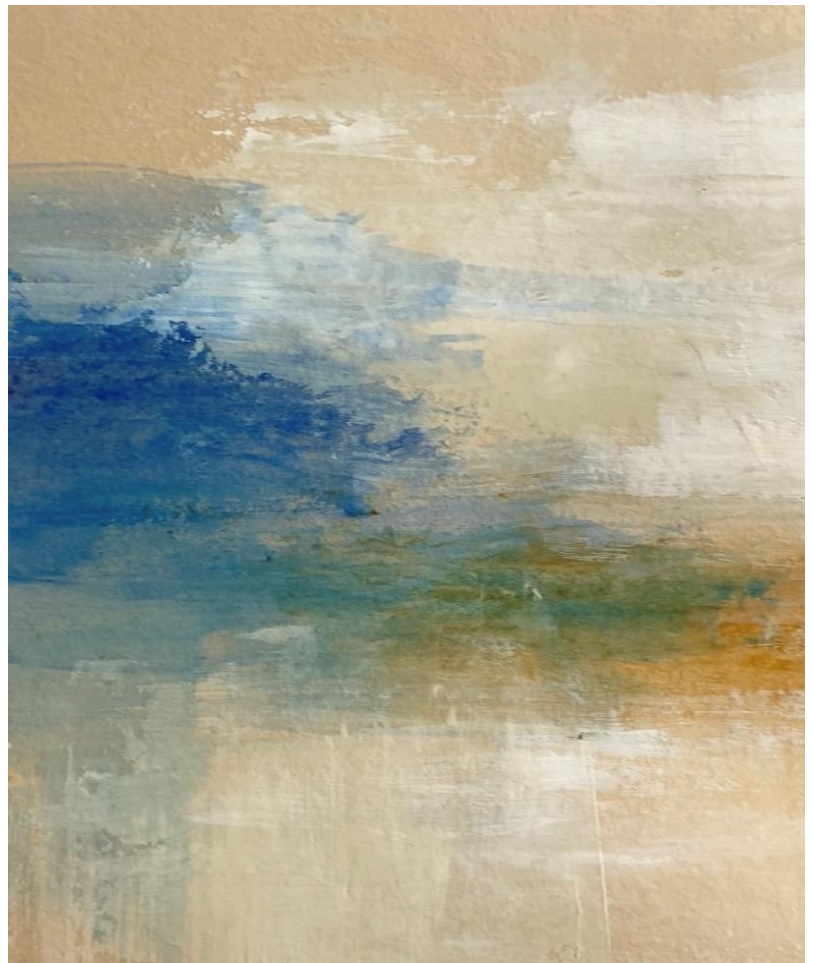
The course will run from 10am-4.30pm (ish) with a one hour lunch break. Please arrive 10-15 mins early to get set up.

Please bring a packed lunch but light refreshments are available including tea, coffee, herbal teas, biscuits, cake.
*please advise if you have any allergies or intolerances.

I will email you full location details and directions. Nantwich is a lovely historical market town, set beside the



Turner Abstraction I – Acrylic & Mixed Media



Working on buff toned paper

River Weaver. It has a wide range of speciality shops and one of the finest medieval churches in Britain, St Mary's. It has a train station, good bus links and is close to the M6.

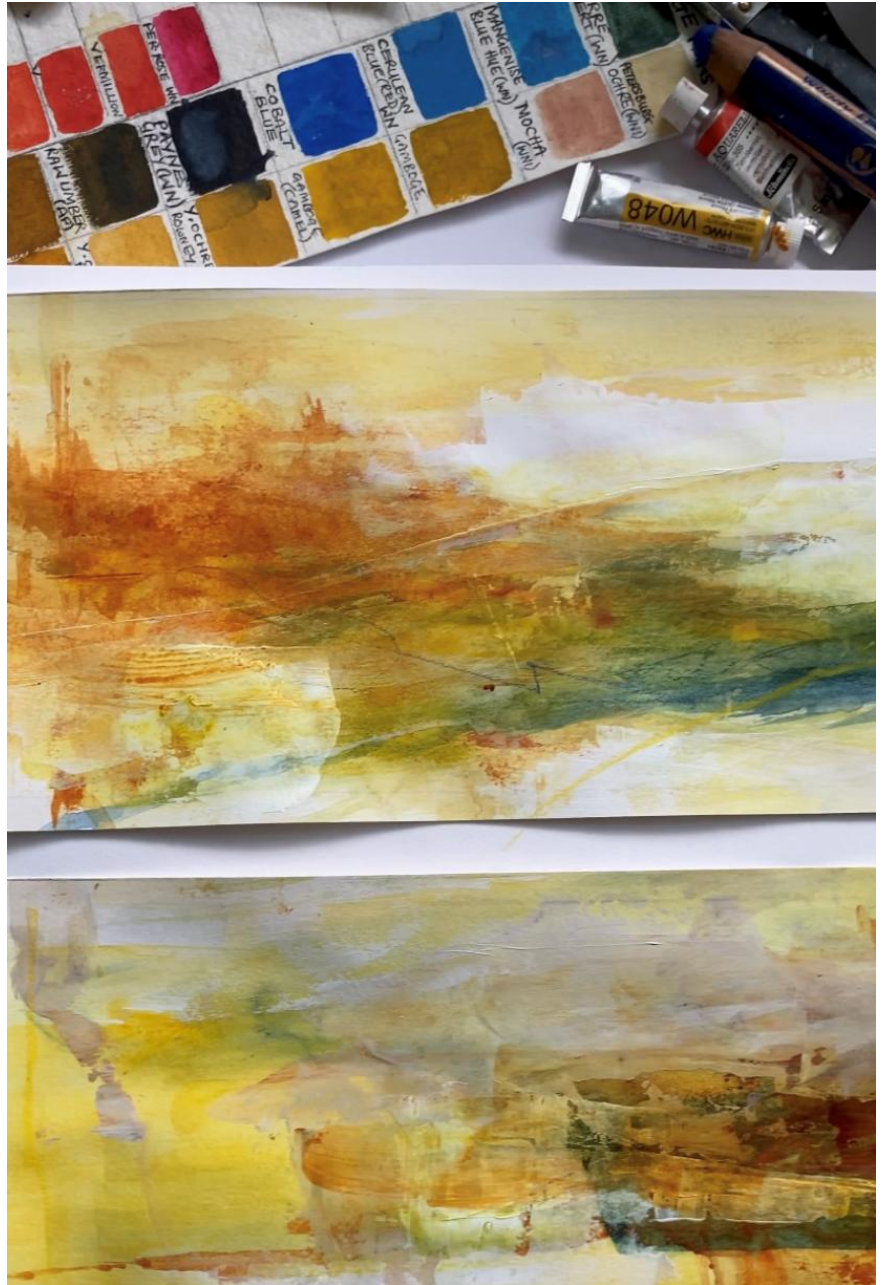
The workshop is suitable for all levels but please note that the emphasis will be on pushing boundaries outside of your normal comfort zone, freeing up and finding your own voice.

About Me

I am an award-winning contemporary painter and trained in Fine Art at the North Wales School of Art & Design. I have exhibited widely throughout Yorkshire and in Cumbria, Oxford and at the Mall Galleries in London. I have collections of work in the UK, USA, Australia, Sweden, Germany and Eire. In 2023 I was elected as a full member of the Society of Women Artists.

I am an experienced teacher of art of over 20 years, working for the University of York (Life Long Learning) and running many workshops, art classes and private tuition.

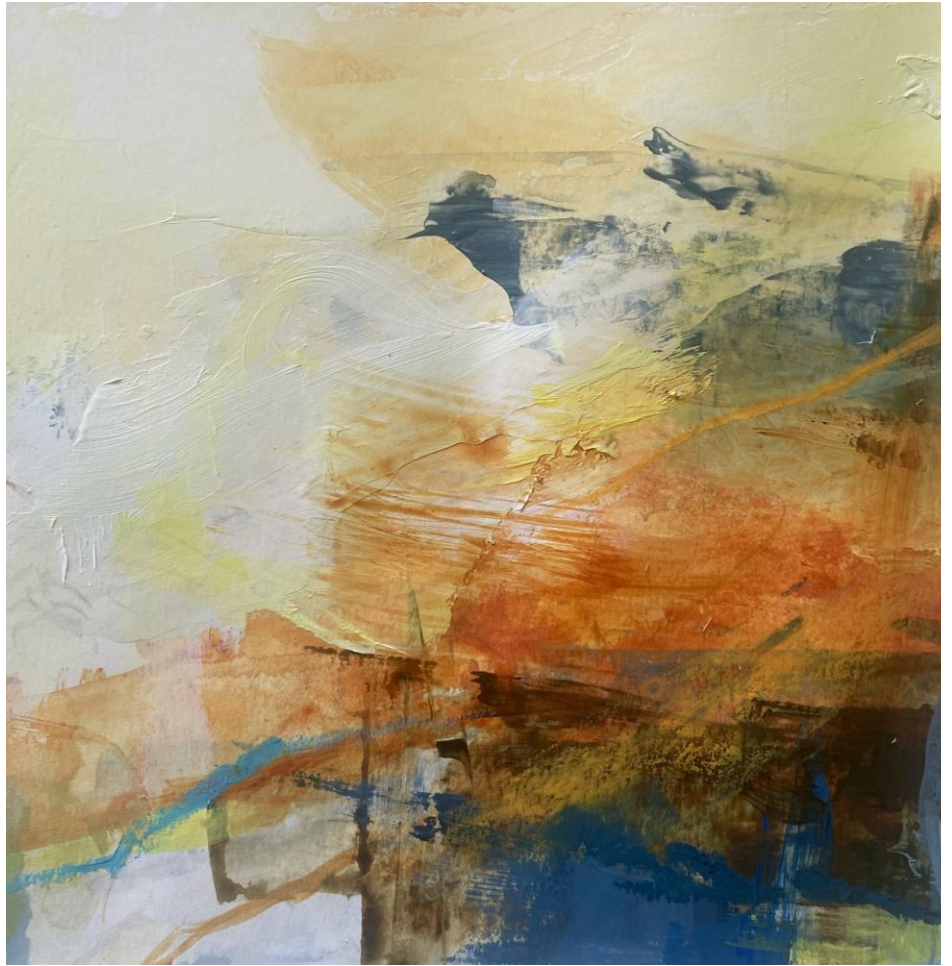
Workshop Fee £240



Painting studies and colour swatches

To book a workshop
please email
luisaholdenart@gmail.com

[https://www.luisaholdenart
.co.uk](https://www.luisaholdenart.co.uk)



Turner Abstraction II – Acrylic & Mixed Media