

# Luisa Holden SWA

Professional Artist & Tutor



## Materials provided on the workshop

- Acrylic paint
- Acrylic inks
- Acrylic mediums
- Paper, prepared card and canvas or board
- Inktense pencils
- Oil pastel and soft chalk pastels
- Catalyst Wedge & Colour Shapers
- ArtGraf
- Charcoal
- Stabilo Woody pencils
- Acrylic brushes
- Palette knives
- Fixative

## Loose & Expressive Acrylic Landscapes

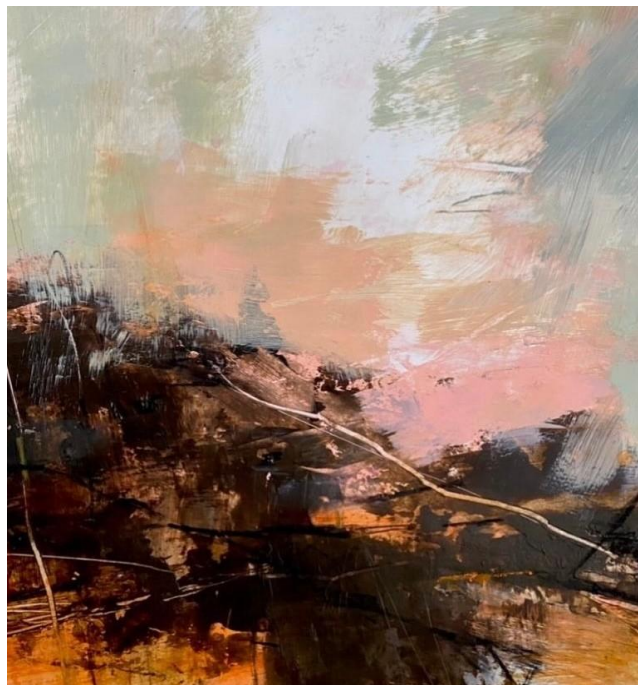
- a **One to One, Intensive Full Day Workshop**  
(Acrylic with Mixed Media)

Working from your own painting studies on paper produced at the workshop and copyright free reference material provided, you will be creating a minimum of two finished landscape paintings plus a set of multiple colour studies which will incorporate collage. One painting will be on pre-prepared gessoed, acid free card; the other will be on canvas or board. Typically, students generally produce 5-6 works during the course of one workshop session so the day is quite intensive but fun!

My method of teaching focuses on loosening up and taking risks to promote spontaneity and energy. I will paint alongside you and give you tips and advice throughout. All materials are provided including painting supports.

## What you will learn:

- Exploring spontaneity, self-expression and new ways of approaching a painting
- Exploring abstraction and simplification
- Build depth through layers, textures and glazes
- Colour mixing – using a muted and limited palette alongside vibrant colours, employing colour swatches and planning colour themes
- The importance of tonal value & contrast
- How to block out unwanted parts of a painting
- How to work up studies into a finished piece
- How to employ a variety of mixed media alongside acrylic, including acrylic inks, Inktense pencils, oil pastel and soft pastel, pastel pencils, Stabilo Woody pencils, charcoal and Art Graf
- How to use various acrylic mediums
- Dynamic line, brush & palette knife work



*Craggy Landscape III – Mixed Media*



## Overview

The workshop is held in my home in Nantwich, Cheshire, where you will be welcome to take a tour of my studio. Parking is available.

The workshop is on a one-to-one basis so that I can give you my full attention and mentoring throughout the day. Because I offer one-to-one tuition, a mutual day can be agreed.

If you are travelling from further afield and are making a holiday of your visit, you may prefer to extend the workshop to a two-day workshop where we will be working on more projects, developing themes and experimenting with more mixed media.

There will be a discount available if you wish to book a two-day workshop. Please contact me for details.

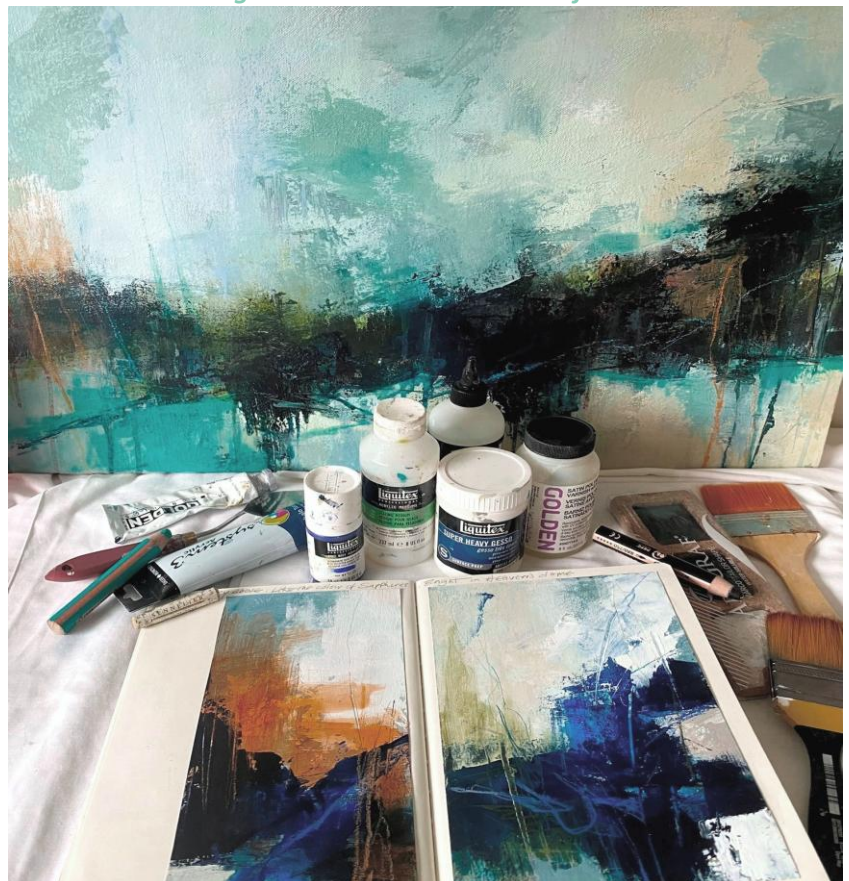
The course will run from 10am-4.30pm (ish) with a one-hour lunch break. Please arrive 10-15 mins early to get set up.

Please bring a packed lunch but light refreshments are available including tea, coffee, herbal teas, biscuits, cake.  
\*please advise if you have any allergies or intolerances.

I will email you full location details and directions. Nantwich is a lovely historical market town, set beside the River Weaver. It has a wide range of speciality shops and one of the finest medieval churches in Britain, St Mary's. It has a train station, good bus links and is close to the M6.



*Working sketchbook and selection of mediums.*





The workshop is suitable for all levels but please note that the emphasis will be on pushing boundaries outside of your normal comfort zone, freeing up and finding your own voice.

## About Me

I am an award-winning contemporary painter and trained in Fine Art at the North Wales School of Art & Design. I have exhibited widely throughout Yorkshire and in Cumbria, Oxford and at the Mall Galleries in London. I have collections of work in the UK, USA, Australia, Sweden, Germany and Eire. In 2023 I was elected a full member of the Society of Women Artists.

I am an experienced teacher of art of over 20 years, working for the University of York (Life Long Learning) and running many workshops, art classes and private tuition

Workshop Fee £225

To book a workshop  
please email

[luisaholdenart@gmail.com](mailto:luisaholdenart@gmail.com)

<https://www.luisaholdenart.co.uk>

