

ATC SYSTEMS

www.atc-sys.com



SAMPLE CONDITIONER & ANALYZING

CUSTOMIZED BY ATC

- Process Water conditioner
 - Steam conditioner
 - Gas conditioner
- Raw or rejected Water conditioner
 - Instruments



CONDITIONER PANELS FOR WATER ANALYSERS



PED
2014/68/UE

ATEX
2014/34/UE



Extracting a **continuous steam sample**, from the boiler. **ATC SWAS Panel or Complete sampling system**, is cooling the sample, reduce the pressure and averaging particles content **to safe levels**, for the measurements, **Real-time monitoring** can then be used to control chemical dosing and **blowdowns**.



CIRCULATION WATER QUALITY ANALYSIS



PED
2014/68/UE



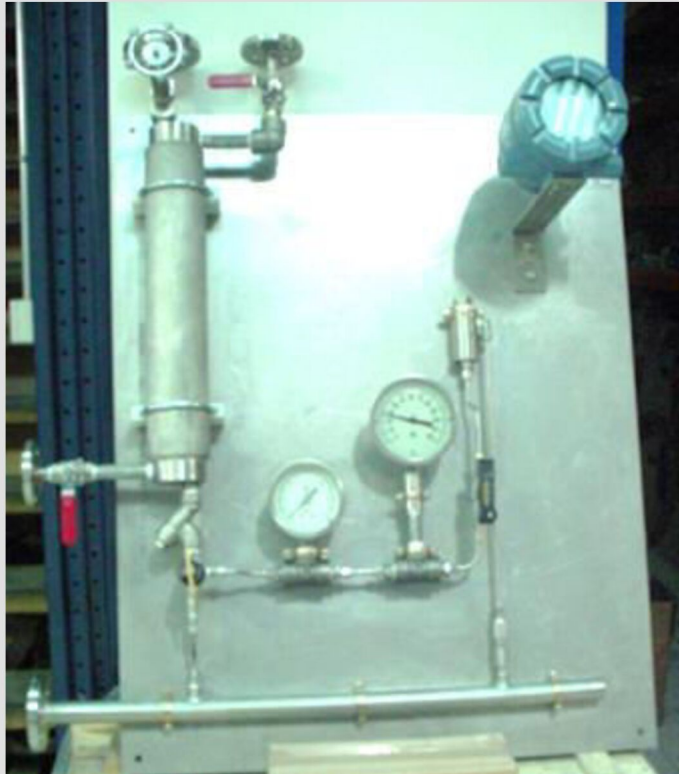
Steam condensate analysis, ATC customized panels, benefits:

- Extended asset lifetime
- More efficient heat transfer
- More steam quality
- Optimized chemical dosing reducing this expense
- Simple and safe instrument maintenance



ATC Steam Sample Conditioner

COOLING AND ANALYSIS IN LINE



ATC's Panels can be customized to measure a wide range of parameters: pH, Conductivity, Dissolved oxygen, Turbidity.. from first class recognized brands.



Heat Exchanger for Gas conditioner, in line and under pressure, is designed and built by ATC from exotic alloys, for severe services.



PED
2014/68/UE

ATEX
2014/34/UE

CONDITIONING SYSTEM BY DOSING REACTIVE, MIX WITH PUMPED SAMPLE TO BE ANALYSED



Pumping and Analysing Sample

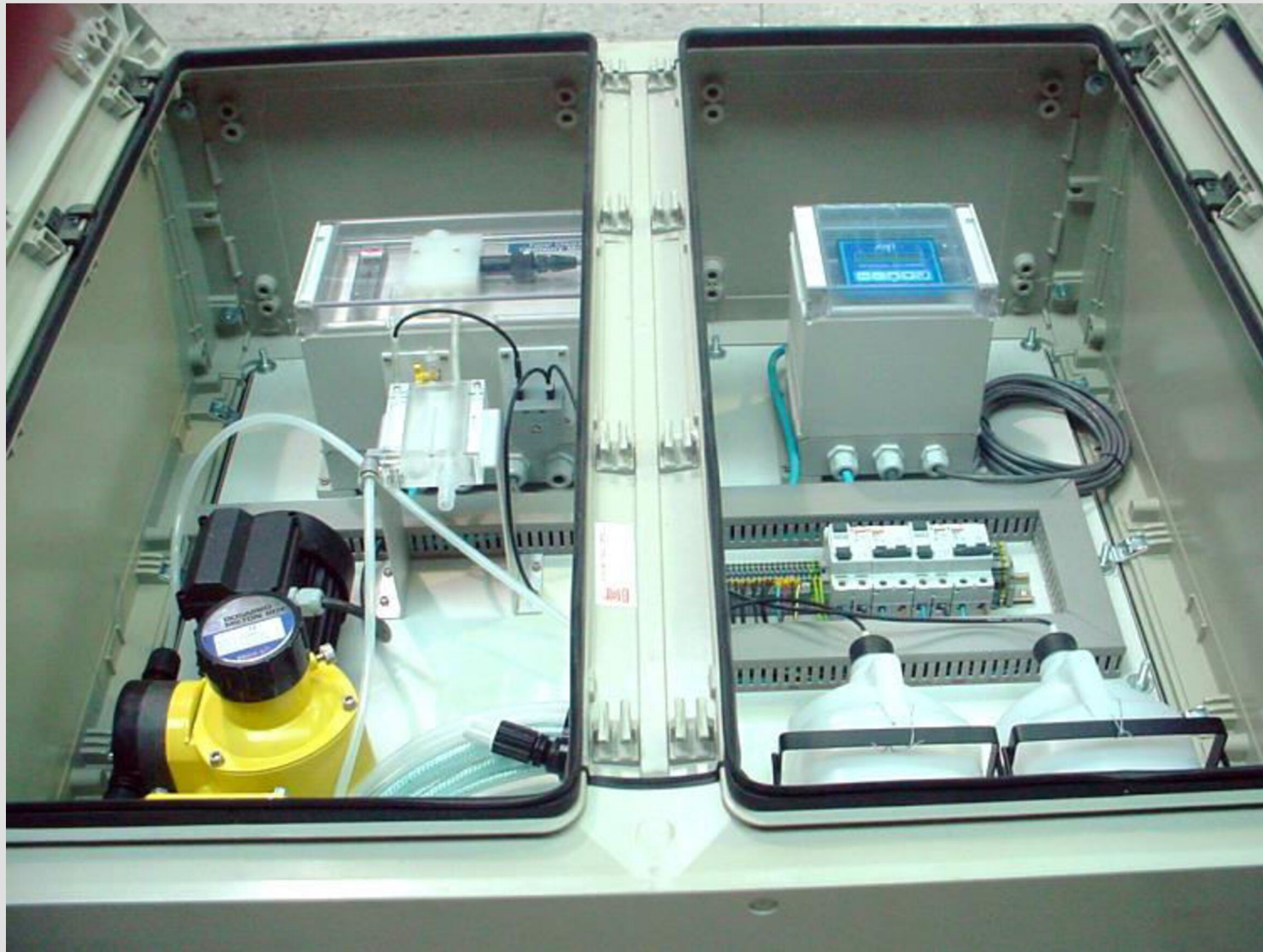
Water Analysis

Main parameters, on water or steam base:

pH, **ORP**, **Na**: Sodium, **SiO₂**: Silica, **SC**: Specific Conductivity. **CC**: Cationic Conductivity, **DCC**: Degassed Conductivity. **Hz**: Hydrazine, **Cl**: Chlorine (Total, Free, Mono-chloramine, **pH** independent Free Chlorine). **O₂**: dissolved oxygen, **HTF**: Heat Transfer Fluid..... from first class recognized brands of analysers..... are used by ATC in its Conditioners Analysing Sample



First class components brands from AVL, are integrated in ATC 's skids, systems and panels, helping us to customize and achieve the best performance, in each specific service.



ATC's Panels, for Drying, outlet regulating outlet pressure and specific Gas flow required



PED
2014/68/UE



ATC Gas Conditioner Panels for drying, filtering, controlling pressure flow and temperature



ATC designs and builds customized **Instrument Cabinets** for controlling **electrical heat tracing** indication and alarms, **at flow instruments location.**

ATEX
2014/34/UE



LIQUID PROCESS SAMPLER FLOWMETER CONDITIONING



Special **Hook-Up for Instruments.**
Local Wired Junction box, Sun Shade
and piped drains are build in ATC



PED
2014/68/UE





Local indication boxes, **build by ATC** for measure and alarm, in different location at same level of reactor or tank, **help to predictive, advancing tendency towards fail.**

Temperature indicates, **each level, of tank reactor for adding redundancy local alarms to PLC**



ATC PROCESS CONTROL, JUNCTION & INSTRUMENT BOXES

- PLC Boxes:** Local and remote control of equipments.
- Junction Boxes** and wiring according customer specs
- Instrument Cabinets** ready for extreme conditions.

