

ENERGY PROJECT MANAGEMENT CYCLE

ON TIME DELIVERY

REQUEST FOR QUOTE (RFQ)

PURCHASE ORDER (PO)

PROJECT

- STUDY OF TERMS AND CONDITIONS
- APPLICABLE SPECIFICATIONS
- QUALITY REQUIREMENTS
- CC&I (COMMERCIAL CONDITIONS AND INSTRUCTIONS)
- INSTRUCTIONS TO BIDDERS.
- PVL (PROJECT VENDOR LIST)
- LEGAL NORMATIVE
- SCOPE
- STUDIES OF HAZOP (HAZARD AND OPERABILITY) & SIL (SAFETY INTEGRITY LEVEL)
- HSE (HEALTHY, SAFETY AND ENVIRONMENTAL) REQUIREMENTS

- CLARIFICATIONS
- RFI (REQUISITION FOR INQUIRY)
- RFP (REQUISITION FOR PURCHASE)
- VDDR (VENDOR DRAWINGS AND DATA REQUIREMENTS)
- TITLE BLOCKS / COVERS / TEMPLATES
- INSTRUCTIONS FOR DOCUMENTATION
- DISTRIBUTION LIST
- ROLES AND RESPONSIBILITIES.
- IAP (INSPECTION ACTIVITIES PLAN)
- KOM (KICKOFF MEETING)

PROJECT DOCUMENTATION

- VDDL (VENDOR DRAWINGS AND DATA LIST).
- GENERAL ARRANGEMENT WITH DIMENSIONS AND LOADING DATA
- PROCESS PIPING AND INSTRUMENT DIAGRAMS
- JUNCTION BOXES AND TERMINAL STRIPS CONNECTIONS
- LIST OF UTILITY CONSUMPTIONS.
- RECOMMENDED SPARE PARTS LISTS
- LUBRICANT LIST WITH EQUIVALENCES
- INSTALLATION, OPERATION AND MAINTENANCE MANUAL
- DETAILED DRAWINGS FOR EQUIPMENT AND AUXILIARY ELEMENTS
- WELDING DOSSIER
- QUALITY CONTROL PLAN
- SUBSUPPLIERS LIST
- LOCAL CONTROL PANEL DRAWINGS
- LIST OF SETPOINT VALUES FOR ALARMS AND SHUTDOWN
- INSTRUMENT LIST
- COMPLETED DATA SHEETS FOR AUXILIARY MECHANICAL EQUIPMENT
- INSTRUMENTS DATA SHEETS
- DATA SHEETS FOR ELECTRICAL CONSUMERS
- NOISE DATA SHEETS
- FIXING AND MOUNTING EQUIPMENT DETAILS DRAWING
- TESTS PROCEDURES
- CAUSE AND EFFECT DIAGRAMS
- FINAL QUALITY DOSSIER
- PACKING AND TRANSPORTATION PROCEDURE
- PRESERVATION FOR STORAGE
- LIFTING & COMMISSIONING PROCEDURE.
- PAINTING AND COATING PROCEDURE (MDS & MSDS OF APPLIED PAINT; PAINTING REPORT...) IN COMPLIANCE WITH HSE CODES.

FOLLOW UP / APPROVAL

- COMMUNICATIONS (E-TRANSMITTAL)
- PROGRESS REPORT
- OVERALL MANUFACTURING PROGRAM
- RAW MATERIAL INSPECTION
- MONTHLY MANUFACTURING REPORT
- IF APPLICABLE:
LOAD DOCUMENTATION IN CUSTOMER PLM (ENOVIA; WINDCHIL, TEAMCENTER...)

MANUFACTURING & TESTING

- ACCORDING TO CONTRACTUAL DOCUMENTS, REQUISITIONS, CODES AND STANDARDS
- ACCORDING TO STANDARDS:
- ASME / DIN / EN / ISO
- PED DIRECTIVE 2014/68/EU
- NOISE REQUIREMENTS
- IAP (INSPECTION ACTIVITIES PLAN)
- BEFORE MANUFACTURING
Pre-inspection Meeting
Welders and NDT operators qualifications
Material & Test Certificates for raw material
Equipment and Calibration Instrument Check
- DURING MANUFACTURING
Traceability marking
Final NDT
- TEST AND FINAL REVIEW
Hydrostatic tests
Operational run test
Visual check
Dimensional check
Nameplates/Tagging check
Surface preparation/Painting check
Final Dossier check
Release note

INSPECTION / RELEASE NOTE

- FQD (FINAL QUALITY DOSSIER)
- VDB (VENDOR DATA BOOK)
- IRC (INSPECTION RELEASE CERTIFICATE)
- IF APPLICABLE:
- 3rd PARTY INSPECTION
- MILL TEST CERTIFICATE.
- FAT TEST.
o VERIFICATION OF COMPLETENESS
o VISUAL / DIMENSIONAL CHECK
o MAIN COMPONENTS
o INSTRUMENTATION
o FUNCTIONAL TEST:
Flow rate
Pressure
Duration of test
Safety valve
Pressure Control Valve
Temperature Control Valve
Temperature in reservoir
Leakages
Switch over of filters
Filter clean after test run

LOGISTIC & SHIPPING

- ACCORDING TO SPECIFICATIONS:
- INCOTERMS
- PACKING LIST
- SHIPPING MARKS
- CERTIFICATE OF ORIGIN
- CERTIFICATE EUR 1
- IF APPLICABLE:
- TRANSPORT DOCUMENT
- DDP TERMS
- MSDS: MATERIAL SAFETY DATA SHEET
- SHIPPING DRAWINGS
- OTHER DOCUMENTS ON DEMAND
- ETD/ETA
- BILL OF LANDING / CMR / AIRWAY BILL

ENGINEERING CAPABILITIES

Testing & FAT

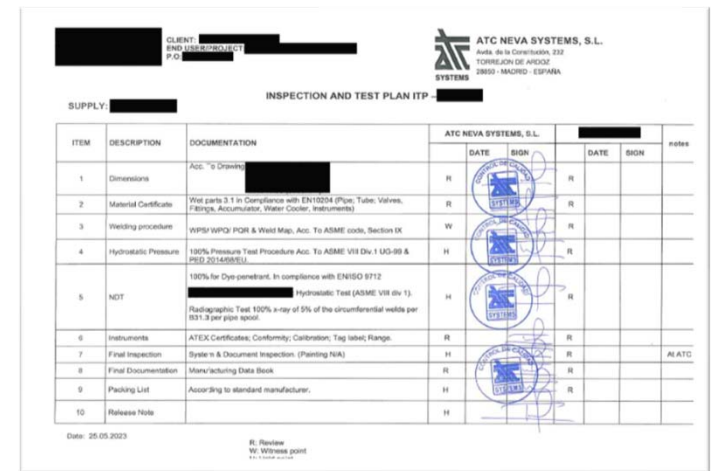
Quality assurance

Requirements compliance

Certification

Commissioning & start-up

legalization



ENGINEERING CAPABILITIES

Skid Processes for the Power and Chemical Sectors

We design and manufacture modular skid systems customized to each client's needs. These compact, efficient solutions are ideal for applications such as:

- Chemical dosing
- Water treatment
- Heat exchange
- Fuel and lubrication systems

Our skids are delivered pre-assembled and tested, reducing on-site installation time and minimizing operational risks.

Key Benefits:

- Customized and scalable design
- Compliance with international standards (ASME, API, IEC)
- Easy integration with existing processes

Project Management and Implementation

At ATC Neva Systems, we support every stage of your project—from conceptual design to commissioning.

Our services include:

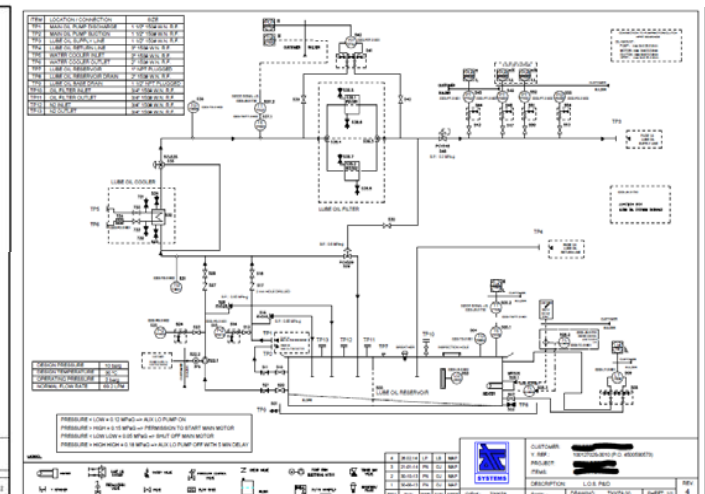
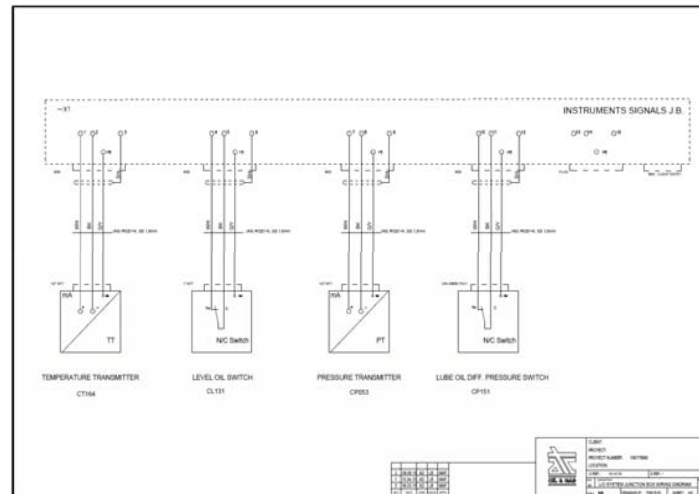
- On-site technical supervision
- Coordination with suppliers and clients
- We apply Detailed planning and scheduling
- Budget and resource management

recognized methodologies to ensure timely delivery and alignment with each client's goals.

ENGINEERING CAPABILITIES

generation of documents for design, construction, erection & maintenance AT C's Customized solutions.

- Generation 3D design skids.
- Plant pipe & design package (2D, 3D, ISO ...)
- Creating process of layouts of sign list, cable tray & junction boxes
- Wiring diagrams and P&ID's
- Calculation and design of heat exchangers, pre-heater and condensers.
- Pipe & components, stress calculation and analysis.
- Flow instrument calculation and design, in accordance with: ASME-MFC-3M /ISO-5167/ BS-1042/ ASME/PTC 19.3
- In-house programs for designing steam surface condenser.
- Cause Effect system diagram.
- Filter calculation and pressurized vessels design for construction



DOCUMENTATION

- GA Drawings & BOM
- Tags/KKS codification & identification, from customer lists.
- NDE records, included Hydro test Certificate.
- Material Certified EN1020.3.1
- Datasheets for Instrument, Valves and main Components such as: H. Exchanger, RO, Filters, Pumps, Dryer,..
- Certificate of Origin
- Welding book: WPS, PQR, WQR, Weld. Map.
- Hazardous area Skid certificates
- Calibration certificates
- Skid / system installation and maintenance manuals
- Schedule of manufacturing and monthly reports

NDE TESTING

- X - Ray
- Magnetic Particle
- Positive Material Identification
- Ultrasonic test
- Hydraulic & Leak test
- Dye Penetrant
- Ferrite test
- Tensile & Impact Testing
- Heat Treatment, Stress Relieving & Normalising
- Hydraulic test bench (450 Kg/cm²g).
- Flow test bench, for running test and recorder 80LPM.
- Elko meter for Paint Thickness Check.
- Plain table tester kit.
- Noise (dB) Tester.
- 1.0./0.D. gauge devices (0.001mm accuracy).



- ATC's test benches are ENAC instruments certified or 3rd Party tested.



ENGINEERING CAPABILITIES

Engineering and Technical Documentation

Our team includes specialists in multiple engineering disciplines:

- Mechanical, electrical, process, and instrumentation engineering
- Development of P&IDs, electrical diagrams, technical datasheets, and manuals
- Compliance with client specifications and local/international standards
- 3D modeling, simulations, and change control

All documentation is delivered in digital and print formats, audit-ready and operationally useful.

Stock Management and Logistics

We understand that material availability and on-time delivery are critical to any project's success. That's why ATC Neva Systems offers a robust inventory and logistics management system:

- Real-time inventory tracking with full traceability
- Partnerships with national and international suppliers
- Packaging and transport tailored to equipment requirements
- Support for urgent orders or scheduled deliveries

Our logistics approach ensures that every component arrives at the right place, at the right time.

Thank you!

In order to offer you, a technical solution that meets your requirements, please contact us at: sales@atc-sys.com



www.atc-sys.com

AVENIDA DE LA CONSTITUCIÓN
232, TORREJÓN DE ARDOZ,
28850 MADRID – SPAIN

Alberto Jiménez / BDM
alberto.jimenez@atc-sys.com

