

A photograph of the Northwest Arkansas Food Bank building. The building has a dark brick facade and a large glass entrance. Above the entrance is a white sign with the text "NORTHWEST ARKANSAS FOOD BANK" in orange and green, and a logo of the state of Arkansas with a wheat stalk. To the right of the sign is a smaller logo for "FEEDING AMERICA". The building is surrounded by a concrete walkway and some landscaping.

NORTHWEST ARKANSAS
FOOD BANK

A decorative graphic of several overlapping orange leaves of various sizes, positioned on the left side of the page.

2025 IMPACT REPORT

Nourishing Northwest Arkansas Communities

We envision a Northwest Arkansas
where all of our neighbors have access to
enough food for an active, healthy life.

**ENERGY TO THRIVE.
EMOTIONAL WELLBEING.
SUCCESS IN SCHOOL.**

Food is the Foundation.

nwafoodbank.org

NORTHWEST
ARKANSAS
FOOD BANK

The Northwest Arkansas Food Bank logo, featuring a green outline of the state of Arkansas with a wheat stalk growing from the top right corner. Below the map, the text "FEEDING AMERICA" is written in small red letters.

TM

A Letter from the President & CEO



Taylor Speegle

Northwest Arkansas continues to grow at a remarkable pace. New homes are being built. New businesses are opening. New families are moving here every day in search of opportunity.

But growth does not reach everyone equally.

More than 95,000 people in Northwest Arkansas do not have enough food for an active, healthy life – enough people to fill the University of Arkansas Razorback Stadium.

That reality keeps our work urgent.

This past year, our community stepped forward in powerful ways. Together, we distributed millions of pounds of food across Benton, Washington, Carroll, and Madison counties. Our network of agency partners expanded access. Volunteers showed up in record numbers. Donors invested in this mission with generosity and trust.

We are making real progress: reaching more neighbors, providing more meals, strengthening partnerships across the region.

And still, the need is present in every community we serve.

Behind every number is a neighbor. A parent working to provide for their family. A senior stretching a fixed income. A child who needs enough food to learn, grow, and thrive.

This is why we believe Food is the Foundation. It is the starting point for health. For education. For economic mobility. When that foundation is strong, everything else becomes possible.

I see that truth every day in the work of this organization and in the people who make it possible. Partners. Volunteers. Donors. Agencies. A community that continues to show up for one another.

Thank you for being part of this work.

Together, we are building a Northwest Arkansas where every neighbor has a place at the table.

Taylor Speegle



WHAT DOES HUNGER LOOK LIKE IN YOUR NEIGHBORHOOD?

It may look like someone...

- Choosing to buy prescription medications instead of food.
- Saving a portion of their school meal for a younger sibling at home.
- Watering down milk or other drinks to make them last longer.
- Skipping meals to make their budget stretch.
- Eating unhealthy foods because they are lower cost.

More than 95,000 people in Northwest Arkansas do not have enough food for an active, healthy life – enough people to fill the University of Arkansas Razorback Stadium.

(Feeding America Map the Meal Gap, 2025).

Where does hunger come from?

My company laid me off last month. How will I keep food on the table for my family until I find another job?



A family emergency resulted in me raising my 3 grandchildren. My social security only goes so far. How will I ensure they have everything they need?



A car accident left me with a disability and unable to work. How can I supplement my benefits so that I can stay independent?



Hunger also comes from...

Unexpected bills, rising housing costs, student debt, medical expenses, inflation.

Where do you turn to get you through?

Donors make the difference

The Northwest Arkansas Food Bank needs you to help make hunger a problem of the past. Please consider putting a meal on the table of your neighbors today.



Donate

For every \$1 donated in the Northwest Arkansas Food Bank, we provide up to 2 meals.



Sponsor

The Northwest Arkansas Food Bank offers competitive sponsor packages for businesses and corporations.



Sponsor a Food Drive

Food drives help our neighbors right here in Northwest Arkansas.



Volunteer

We welcome individual volunteers, corporate groups, and families.

NORTHWEST ARKANSAS
FOOD BANK



TM

Northwest Arkansas Food Bank: Your Food Distribution Center

Have you ever been amazed at how quickly food appears at your local grocery store? Between world-class retailers, grocery pick-up, and modern delivery services, we are living in a time when efficiency counts in Northwest Arkansas. The charitable food web is no exception. When you or your neighbors need food assistance, local organizations must work together to get food to the right people, in the right place, at the right time.

The Northwest Arkansas Food Bank stands at the center of this collaboration. As our region's sole distribution center for charitable food, we source healthy foods by donation or at low-cost, and then pass that food on to our 88 agency partners so that they can nourish our communities. We also fill gaps in the charitable food web by providing food directly to our neighbors through Mobile Pantries, School Pantries, and our Feed Rogers pantry. Finally, we are a central hub for nutrition education and SNAP assistance in Northwest Arkansas.

Community Partners: Your Steady Support

Our Northwest Arkansas neighbors in Benton, Carroll, Madison, and Washington Counties set their tables with food from our agency partners including community pantries, church pantries, soup kitchens, and other charitable feeding organizations. These organizations source food at low- or no-cost from the Food Bank, enabling them to make their budget stretch further to feed more people.

More than 95,000 people in Northwest Arkansas are considered food insecure. Food insecure means they do not know where their next meal is coming from.

*Source: Feeding America
Map the Meal Gap, 2025*

By the numbers 2025

- 88 agency partners
- 9,469,010 meals distributed through agencies
- Program annual cost: \$6,109,897

Did You Know?

The Food Bank also “rescues” near-to-date items from local retailers and routes them to local pantries feeding our neighbors while eliminating food waste.

You belong here!

- Visit your local pantry
- Stock the pantry shelves
- Be a friend!



Mobile Pantry: Your Food Oasis



Through our Mobile Pantry Program, the Northwest Arkansas Food Bank is bringing food right to the communities where our neighbors live. Mobile Pantry locations are selected based on community need and the availability of other charitable food resources in the area. We partner with local organizations to host our truck at their facility monthly. Neighbors are welcome to visit and pick up free groceries on distribution day to help their budget go further.

By the numbers 2025

- 19 mobile pantry locations
- 1,107,859 meals distributed
- Program annual cost: \$672,180

You belong here!

- Find a Mobile Pantry
- Provide food for Mobile Pantry
- Pack Boxes for Mobile Pantry



School Pantry: A Trusted Source



Our School Pantry Program exists to alleviate child hunger in Northwest Arkansas. School based pantries are located on the grounds of the school and are intended to provide a more readily accessible source of food assistance to low-income students and their families. We believe all children have the right to arrive at school happy, healthy, and ready to learn!

By the numbers 2025

- 34 school pantry locations
- 531,728 meals distributed
- Program annual cost: \$491,496

Did you know?

More than 22,000 children in Northwest Arkansas lack access to nutritious meals.

(Source: Feeding America Map the Meal Gap, 2025)



Feed Rogers: Your Neighborhood Hub



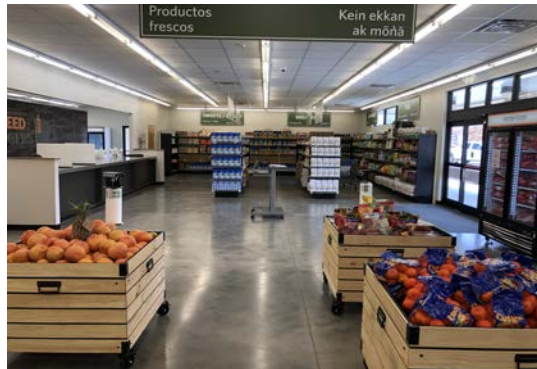
The Food Bank’s Feed Rogers neighbor choice pantry transforms the traditional food pantry model from transactional to transformational. Since opening in 2022, Feed Rogers provides a grocery store-style experience, giving our neighbors the power to choose their own food and manage their families’ nutrition.

By the numbers 2025

- 81,256 people served (duplicated)
- 900,088 meals distributed
- Program annual cost: \$617,424

You belong here!

- Visit Feed Rogers
- Stock the shelves at Feed Rogers
- Volunteer at Feed Rogers



SNAP: Food Access Simplified



The Food Bank provides one on one assistance to individuals and households in determining eligibility and applying for the Supplemental Nutrition Assistance Program (SNAP). More than 400,000 Arkansans rely on SNAP to alleviate food insecurity, and the majority of households using SNAP include children.

By the numbers 2025

- 474 applications submitted on behalf of our neighbors.
- Program annual cost: \$50,039

SNAP disruptions leave lasting effects

Federal disruptions to SNAP from 2025 will have long-term effects on Arkansans, from nutritional deficits in children to increased debt by families. This makes charitable food assistance more critical than ever.



TM

Follow Our Food Through the Warehouse



1 People donate \$\$ to the NWAFB.



2 NWAFB purchases healthy food from a manufacturer in bulk at a wholesale rate.



3 Food is shipped on a truck to NWAFB.



4 Food arrives at the NWAFB warehouse, is processed and made available to agency partners and programs.



5 Agency partners receive food from the Northwest Arkansas Food Bank.



6 Agency partners and programs distribute food to our neighbors.

Fun Fact:

A standard semi-truck trailer can deliver 25,000 jars of peanut butter, worth \$46,000, to the Northwest Arkansas Food Bank warehouse in one load.

Take a Tour of Our New Home!

In 2024, the Northwest Arkansas Food Bank moved into the new Claude and Betty Harris Center for Hunger Relief, a state-of-the-art, 82,425-square-foot facility in Lowell. With this expansion, we are doing so much more: distributing more food, engaging more volunteers, and expanding more programming. In case you haven't been able to stop by, here are some highlights!

PROTEIN PACK ROOM



TEACHING KITCHEN



FREEZER STORAGE AREA



VOLUNTEER CENTER



BOARD of DIRECTORS

PRESIDENT
Samantha Daugherty
Google

VICE PRESIDENT
Jaclyn House
KNWA

TREASURER
Kris Meaders
Clorox

SECRETARY
Erica Grundish
PepsiCo

PAST CHAIR
Jason Howard
Cargill

Emi Cardarelli
Board Member
Zeiss Vision Care

Brandon Hurlbut
Board Member
Tyson

Nic Keneipp
Board Member
New Nexus Group

Micah Klasky
Board Member
The Hive

Michael McFadden
Board Member
Unilever

Kenneth Medlin
Board Member
Spectrum Brands

Michelle Mullins
Board Member
Tyson Foods

Alain Nzigamasabo
Board Member
Sam's Club

Luis Olivarez
Board Member
BOK Financial

Chris Sputo
Board Member
War Eagle Food Group

Ronnie Webb
Board Member
Walmart

NORTHWEST ARKANSAS FOOD BANK



By The Numbers

2024 AUDITED FINANCIAL STATEMENT

Total revenue & support: \$29,859,884

Contributions: \$6,724,011

Shared Maintenance Fees: \$3,462,147

Grants: \$1,885,902

Other: \$186,231

Donated Product: \$17,601,593

Total Assets: \$34,636,421

Neighbors served:

Ethnicity

- Asian: 1.55%
- Black/African American: 4.35%
- White/Caucasian: 55.21%
- Hispanic/Latino: 25.52%
- Multi Racial: 1.53%
- Middle Eastern 0.53%
- Native American 1.63%
- Pacific Islander/Marshallese 7.14%
- Other/Prefer not to answer 2.51%

Gender

- Male: 47%
- Female: 51%
- Transgender/Gender Non Conforming: .24%
- Did not disclose: 1%

Age

- 0-17: 32%
- 18-65: 58%
- 66+: 10%

County

- Benton: 35%
- Carroll: 4.3%
- Madison: 2.9%
- Washington: 56%
- Other: 1.43%



SNAP

Applications Submitted: 474



Volunteers: 5509
Hours: 25,184



Mobile Pantry:
25,266 Visits



School Pantry:
22,281 Visits



Agency Partners:
636,212 Visits



Order Ahead:
4,402 Visits



Teaching Kitchen:
66 Classes

NORTHWEST ARKANSAS FOOD BANK

1604 Honeysuckle Street, PO Box 2126, Lowell, AR 72745-2126

Phone (479) 872-8774 | Fax (479) 872-8777

nwafoodbank.org