

## 379

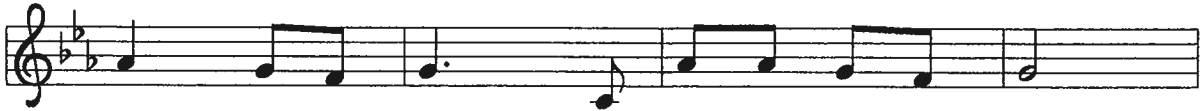
## Now the Green Blade Rises



1 Now the green blade ris - es from the bur - ied grain,  
 2 In the grave they laid him, love by ha - tred slain,  
 3 Forth he came at Eas - ter like the ris - en grain,  
 4 When our hearts are win - try, griev - ing, or in pain,



wheat that in dark earth man - y days has lain;  
 think - ing that he would nev - er wake a - gain,  
 he that for three days in the grave had lain;  
 your touch can call us back to life a - gain,



love lives a - gain, that with the dead has been;  
 laid in the earth like grain that sleeps un - seen;  
 raised from the dead, my liv - ing Lord is seen;  
 fields of our hearts that dead and bare have been;



love is come a - gain like wheat a - ris - ing green.

Text: John MacLeod Campbell Crum, 1872–1958  
 Music: French carol  
 Text © Oxford University Press

NOËL NOUVELET  
 11 10 10 11

## 380

## Hallelujah! Jesus Lives!



1 Hal - le - lu - jah! Je - sus lives! He is now the Liv - ing One;  
 2 Je - sus lives! Why do you weep? Why that sad and mourn - ful sigh?  
 3 Je - sus lives! And thus, my soul, life e - ter - nal waits for you;  
 4 Je - sus lives! Let all re - joice. Praise him, ran - somed of the earth.  
 5 Hal - le - lu - jah! An - gels, sing! Join with us in hymns of praise.



Text: Carl B. Garve, 1763–1841; tr. Jane L. Borthwick, 1813–1897, alt.  
 Music: Ludvig M. Lindeman, 1812–1887

FRED TIL BOD  
 777777



O Lamb of God, I come, I come.

## Drawn to the Light

593



1 Peo - ple who walk in dark - ness have sought a light in the  
 2 How can we tell a heav - en from hell if ev - 'ry - one  
 3 Where is the sun? Oh, there will be none! The Lamb is the



heart of the dark - est night. Just when we thought all would be  
 dwells in the dark of night? Morn - ing dis - pels, gent - ly com -  
 one who is shin - ing bright, bids us to come! Life has be -



lost, we were drawn to the light of God.  
 pels, and we're drawn to the light of God.  
 gun when we're drawn to the light of God.

### *Refrain*



Dawn is in sight! Gone is the night, drawn to the



light and the morn - ing. Glo - rious and bright, oh, what a



sight to be drawn to the light of God.

459

Wade in the Water

*Refrain*  
All

Wade in the wa - ter, wade in the wa - ter, chil - dren,

wade in the wa - ter, God's a - goin' - a trou - ble the wa - ter.

Leader All

- 1 See that host all dressed in white,
- 2 See that band all dressed in red, God's a - goin' - a trou - ble the
- 3 Look o - ver yon - der, what do I see?
- 4 If you don't be - lieve I've been re - deemed,

Leader

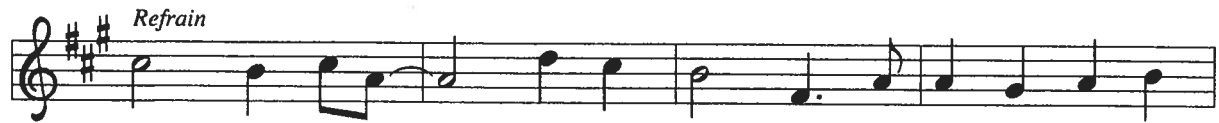
wa - ter. the lead - er looks like the Is - rael - ite.  
looks like the band that . . . Mo - ses led.  
the Ho - ly Ghost a - com - ing on me.  
just fol - low me down to . . . Jor - dan's stream.

All *Refrain*

God's a - goin' - a trou - ble the wa - ter.

## Shine, Jesus, Shine

671



Shine, Je - sus, shine, fill this land with the Fa - ther's glo - ry;



blaze, Spir - it, blaze, set our hearts on fire.



Flow, riv - er, flow, flood the na - tions with grace and mer - cy;



send forth your Word, Lord, and let there be light!



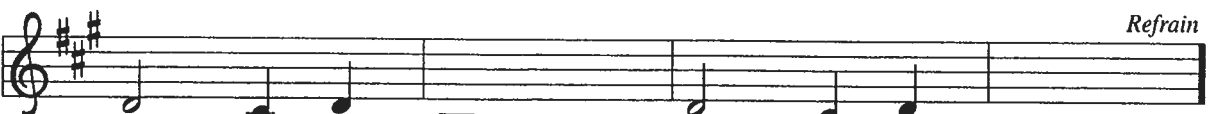
1 Lord, the light of your love is shin - ing, in the midst of the  
2 As we gaze on your king - ly bright-ness, so our fac - es dis -



dark - ness, shin - ing; Je - sus, light of the world, shine up - on us,  
play your like - ness, ev - er chang - ing from glo - ry to glo - ry,



set us free by the truth you now bring us.  
mir - rored here, may our lives tell your sto - ry.



Shine on me, shine on me:  
Shine on me, shine on me:

*Refrain*