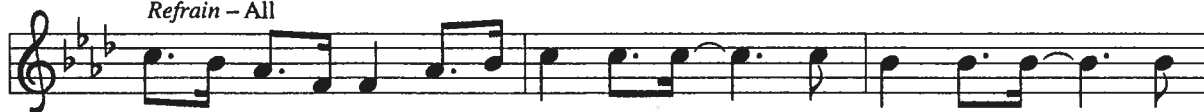


Jesus Is a Rock in a Weary Land

333

Refrain - All

Je - sus is a rock in a wea - ry land, a wea - ry land, a



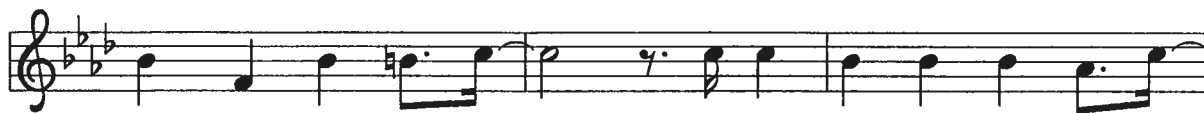
wea - ry land; my Je - sus is a rock in a



wea - ry land, a shel - ter in the time of storm.

Leader or All

1 No one can do like Je - sus, not a
2 When Je - sus was on earth, the . .
3 Yon - der comes my Sav - ior, him . .



mum-bling word he said; he went walk-ing down to Laz-
flesh was ver - y weak; . . he took a towel and gird-
whom I love so well; . . he has the palm of vic-

Refrain

- a - rus' grave, and he raised him from the dead.
ed him - self and he washed his dis-ci - ples' feet.
- to - ry and the keys of death and hell.

Glory and praise to our God

Refrain

G D Em G

Glo - ry and praise to our God, who a - lone gives

Dsus D Am/C Am

light to our days. Man - y are the

G Bm C D G *4th time to stanza 4*

bles - sings he bears to those who trust in his ways.

Dm⁷ C Am D

1 We, the daugh - ters and sons of him who built the
 2 In his wis - dom he strength - ens us, like gold that's
 3 Ev - 'ry mo - ment of ev - 'ry day our God is

G Dm⁷ C

val - leys and plains, praise the won - ders our God has
 test - ed in fire. Though the pow - er of sin pre -
 wait - ing to save, al - ways read - y to seek the

Bm⁷ Em A D D⁹/C G/B D/A *Refrain*

done in ev - 'ry heart that sings.
 vails, our God is there to save.
 lost, to an - swer those who pray.

