

# BESTWAY

## 2022 Product Catalog



3877 Luker Road, Cortland, NY  
4377 State Highway 58, Gouverneur, NY  
115 Bestway Drive, Cresco, PA

607-753-8261  
[www.bestwaylumber.com](http://www.bestwaylumber.com)



## TABLE OF CONTENTS

---

### STOCKED WOOD PRODUCTS

#### PAGE #

Pressure Treated Lumber	6-8
Framing & Southern One	9
Fire Treated with D-Blaze	10
Eastern White Pine	11
Western Red Cedar	12

### OTHER BUILDING PRODUCTS

#### PAGE #

Owens Corning Fiberglass Insulation	13
Shoreline Vinyl Railing and Vinyl & Aluminum Fencing	14-16
MiraTec Treated Exterior Composite Trim	17
VEKAdeck PVC Decking	18
XO by Penrod PVC Trim	19
Union Corrugating Metal Roofing	20-22
EasyTrim Reveals, QuickPanel & FastPlank	23-25

## **ABOUT THE COMPANY**

---

### **SIXTY YEARS IN THE INDUSTRY...**

In 1962, Clarence Ochs went into business for himself. A builder all his life, it's said that sawdust coursed through his veins. Sticking to what he knew, he opened a lumberyard in Marcellus, New York. He called the yard Bestway and began the endeavor with hopes of serving local builders like himself.

Bestway is now led by Clarence's son, Karl Ochs, who in 1978, established the company's current wholesale distribution center in Cortland, New York. Karl's mission was to source, process, and deliver the highest quality treated lumber and building products available on the market to lumberyards and home centers throughout the Northeast and Mid-Atlantic states.

In the 60 years since we first opened our doors, Bestway has continuously evolved to meet the demands of a changing market. At the same time, we have remained true to our roots. We are a family-owned and operated company geared toward meeting the needs of local lumberyards and home centers. Because we believe in the power and importance of tradition, we make it our primary responsibility to deliver quality products to customers who share the same values we do.

Today, we serve New York, Pennsylvania, New Jersey, Connecticut, Maine, Massachusetts, New Hampshire, Rhode Island, and Vermont from our facilities in Cortland, New York; Gouverneur, New York; and Cresco, Pennsylvania. We continue to focus our efforts wherever our customers' needs dictate, and we strive to make the customer experience better and better, year after year. Thank you – to all our valued customers – for being a part of the Bestway tradition.



## OUR SALES TEAM

---



**JEFF TINKHAM**  
**SALES MANAGER**  
[jefft@bestwaylumber.com](mailto:jefft@bestwaylumber.com)



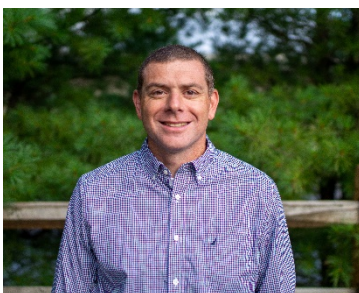
**DAVE HAYES**  
**SALES**  
[dhayes@bestwaylumber.com](mailto:dhayes@bestwaylumber.com)



**COLIN MULVIHILL**  
**SALES**  
[colinm@bestwaylumber.com](mailto:colinm@bestwaylumber.com)



**JIM FISH**  
**UNION STEEL SALES**  
[jimf@bestwaylumber.com](mailto:jimf@bestwaylumber.com)



**CHRIS POLI**  
**SALES**  
[cpoli@bestwaylumber.com](mailto:cpoli@bestwaylumber.com)



**STEVE EVERLE**  
**SALES**  
[severle@bestwaylumber.com](mailto:severle@bestwaylumber.com)



**BOB LEET**  
**SALES**  
[bleet@bestwaylumber.com](mailto:bleet@bestwaylumber.com)



**ZACH WALTER**  
**SALES**  
[zach@bestwaylumber.com](mailto:zach@bestwaylumber.com)



**KIMBERLEE CONWAY**  
**SALES ADMINISTRATION**  
[kconway@bestwaylumber.com](mailto:kconway@bestwaylumber.com)

## LUMBER TREATMENTS AVAILABLE AT BESTWAY

---



Wolmanized® Outdoor® Wood is ideal for decks, retaining walls, fences, picnic tables, planter boxes, raised garden beds, walkways, sill plate and structural members. Wolmanized® Outdoor® Wood, at appropriate retention levels, can be used for Above Ground, Ground Contact, and Heavy Duty Ground Contact applications.



Built-in Fire Protection: D-Blaze treated lumber and plywood are designed for interior wood framing and sheathing applications where fire retardant construction materials are specified or required by building code. D-Blaze is highly effective at slowing down the spread of flame and reducing smoke development as a result of fire.



Wolmanized® Heavy Duty™ Wood (using Wolmanac® CCA preservative) is a great option for a variety of industrial applications such as utility, highway, marine, agricultural and heavy construction. It offers widespread availability, easy handling and modification, long life, and low cost. Common tools can be used for construction and repair, and when used as recommended in approved applications, CCA-treated wood provides decades of service.

## STOCKED PRESSURE TREATED (PT)

### BOARDS (0.15)

#### Lengths

#### Grades

1	x	4		8, 10, 12, 16			#1
1	x	6		8, 10, 12, 16		#2	#1
1	x	8		8, 10, 12, 16		#2	#1

### DIMENSIONAL (0.15)

#### Lengths

#### Grades

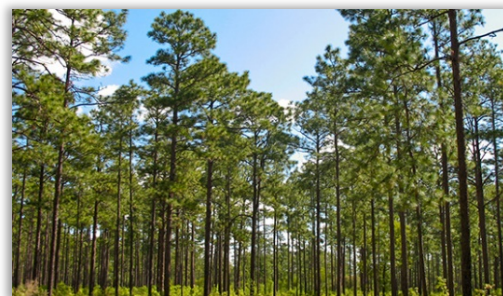
2	x	4		8, 10, 12, 14, 16		#2	#2 Prime	#1	#1 Prime
2	x	6		8, 10, 12, 14, 16, 18, 20, 24		#2	#2 Prime	#1	#1 Prime
2	x	8		8, 10, 12, 14, 16, 18, 20, 24		#2	#2 Prime	#1	
2	x	10		8, 10, 12, 14, 16, 18, 20, 24		#2		#1	
2	x	12		8, 10, 12, 14, 16, 18, 20, 24		#2		#1	

### TIMBERS (0.15, 0.23)

#### Lengths

#### Grades

4	x	4		8, 10, 12, 14, 16		#2	#1
4	x	6		8, 10, 12, 14, 16, 18, 20		#2	
6	x	6		8, 10, 12, 14, 16, 18, 20, 22, 24, 26		#2	
6	x	8		12, 16, 20		#2	
8	x	8		8, 10, 12, 16, 20		#2	
3	x	6		12, 16		#2	
3	x	8		12, 16		#2	
3	x	10		12, 16		#2	
3	x	12		16		#2	
4	x	8		12, 16		#2	
4	x	10		12, 16		#2	
4	x	12		16		#2	
3	x	5		8 (landscapes treated to refusal)		#2	



### DECKING (0.15, RE)

#### Lengths

#### Grades

5/4	x	6		8, 10, 12, 14, 16, 20		Standard	Premium	Select (C&BTR)
-----	---	---	--	-----------------------	--	----------	---------	----------------

### PLYWOOD (0.15)

1/2 CDX & UL  
 5/8 CDX  
 3/4 CDX & UL

**0.60 CCA AVAILABLE**  
**UNTREATED/CUSTOM TREATING AVAILABLE**



## STOCKED PT DECKING AND FENCE SYSTEMS

### 2x2s, SPINDLES, & HANDRAIL (0.15)

Dimensions					Grades and Styles			
2	x	2	x	36"		#1 (SE A2E)	Clear (SE)	Clear Spindle (SE)
2	x	2	x	42"		#1 (SE, A1E, A2E)	Clear (SE, A1E, A2E)	
2	x	2	x	48"		#1 (SE, A1E, A2E)	Clear (SE, A1E, A2E)	
2	x	2	x	8'		#1 (SE)	Clear (SE)	Clear Moulded Handrail
2	x	4	x	8'				
2	x	4	x	12'				

### SPF LATTICE (0.15)

Dimensions				Styles	Thickness (in.)	Diamond Size (in.)
4'	x	8'		Diamond Standard	1/4	2-5/8
4'	x	8'		Diamond Heavy Duty	5/8	2-5/8
4'	x	8'		Diamond Heavy Duty Privacy	5/8	1-3/4
4'	x	8'		Square Privacy	1/2	1-3/4

### SPLITRAIL FENCING (0.15)

Lengths (ft.)		Styles
11'		Diamond Rail
5'4"		2 Hole – Line, Corner, and End
7'		3 Hole – Line, Corner, and End

### STEP STRINGERS (0.15)

Steps		Rise (in.)	Tread (in.)
3		7	11
4		7	11
5		7	11

**0.60 CCA AVAILABLE**  
**UNTREATED/CUSTOM TREATING AVAILABLE**



## STOCKED MISCELLANEOUS

**TONGUE & GROOVE AND STEPPING (TREATED 0.15 OR UNTREATED\*)**

Dimensions (in.)	Type	Lengths (ft.)	Grades
1 x 4	T&G Flooring	8, 10, 12, 14, 16	C&BTR
5/4 x 4	T&G Flooring	8, 10, 12, 14, 16	C&BTR
2 x 6	T&G WP-4	12, 16	#2 Prime
2 x 8	T&G WP-4	16	#1
5/4 x 12	Stepping	8, 10, 12, 14, 16	C&BTR #2

### FOUNDATION-RATED KDAT

Dimensions (in.)	Lengths (ft.)
2 x 6	8, 12, 16
2 x 8	8, 12, 16
2 x 10	12, 16
2 x 12	12, 16

### Plywood

½ CDX  
5/8 CDX  
¾ CDX & UL

### CLASS 5 CCA TELEPHONE POLES (0.60)

Lengths (ft.)
25
30
35
40



Aerial view of our treating and distribution center in Cortland, New York.

**\*Note: T&G and stepping available treated or untreated.**

## STOCKED FRAMING LUMBER

### PREMIUM SPRUCE

### Lengths

2	x	4		8, 10, 12, 14, 16
2	x	6		8, 10, 12, 14, 16

**Southern One**  
framing lumber



### THE SOUTHERN ONE DIFFERENCE...

Southern One framing lumber has a better span rating than Hem Fir, Western Spruce, and Douglas Fir. It's graded on #1 knot and #1 wane rules and paper-wrapped to ensure it arrives clean and dry. We also offer smaller unit sizes to allow for faster inventory turns. Nothing beats Southern One – harvested and milled in the U.S.A.

### SOUTHERN ONE

### Lengths

### Grades

2	x	8		8, 10, 12, 14, 16, 18, 20, 24		<i>Southern One</i>
2	x	10		8, 10, 12, 14, 16, 18, 20, 24		<i>Southern One</i>
2	x	12		8, 10, 12, 14, 16, 18, 20, 24		<i>Southern One</i>

SPRUCE AND **SOUTHERN ONE** CAN BE PURCHASED BY THE PIECE OR BY THE UNIT.



Aerial view of our treating and distribution center in Cresco, Pennsylvania.

## STOCKED FIRE TREATED WITH D-BLAZE

DIMENSIONAL	Lengths	PLYWOOD
2 x 4	8, 10, 12, 14, 16	1/2 CDX
2 x 6	8, 10, 12, 14, 16	5/8 CDX
2 x 8	8, 10, 12, 14, 16	3/4 CDX
2 x 10	8, 10, 12, 14, 16	
2 x 12	8, 10, 12, 14, 16	

## WHAT IS D-BLAZE?



D-Blaze® fire-retardant treated wood (FRTW) is highly effective at controlling the spread of flame and smoke, increasing evacuation time and potentially reducing damages and repair costs caused by fire. D-Blaze FRTW slows the combustion cycle of fire by forming a protective layer of char, hindering flame spread and smoke formation.

Tested and listed by Underwriters Laboratories® (UL® and ULC®), D-Blaze FRTW meets the requirements of construction materials as set forth in all North American building codes. During the code required 30-minute flame and smoke test; UL 723 (ASTM E84), D-Blaze FRTW shows no evidence of significant progressive combustion.

D-Blaze is recognized as a code compliant pressure-impregnated fire-retardant treatment under the International Building Code® (IBC®), International Residential Code® (IRC®) and the National Building Code of Canada® (NBC®) for lumber and plywood products used in fire rated assemblies and interior applications where fire retardant construction materials are permitted and specified by the building codes.

**D-Blaze meets these testing requirements:**

ASTM E 84  
ASTM D 5516

ASTM D 3201  
ASTM D 5664



## STOCKED EASTERN WHITE PINE

### S4S

			Lengths	Grades	
1	x	4	8, 10, 12, 16 + random lengths	Premium	D&BTR
1	x	6	8, 10, 12, 16 + random lengths	Premium	D&BTR
1	x	8	8, 10, 12, 16 + random lengths	Premium	D&BTR
1	x	10	8, 10, 12, 16 + random lengths	Premium	D&BTR
1	x	12	8, 10, 12, 16 + random lengths	Standard	Premium D&BTR
5/4	x	4	random lengths	Premium	
5/4	x	6	random lengths	Premium	
5/4	x	8	random lengths	Premium	
5/4	x	10	random lengths	Premium	
5/4	x	12	random lengths	Premium	

### TONGUE & GROOVE

			Lengths	Grades	
1	x	6 E&CB1S	8, 10, 12, 14, 16 + random lengths	Standard	Premium
1	x	6 WP-4	random lengths	Standard	Premium
1	x	8 WP-4	random lengths	Standard	
1	x	8 E&CB1S	random lengths	Standard	

### SIDING

			Lengths	Grades	
1/2 x	6	beveled	random lengths		Premium
1/2 x	8	beveled	random lengths		Premium

### SHIPLAP

			Lengths	Grades	
1	x	6 novelty	random lengths	Standard	
1	x	6 rougher head	random lengths	Standard	
1	x	8 rougher head	random lengths	Standard	
1	x	10 rougher head	random lengths	Standard	
1	x	8 channel rustic	random lengths	Standard	
1	x	10 channel rustic	random lengths	Standard	
2	x	6 log cabin	random lengths	Standard	
2	x	8 log cabin	random lengths	Standard	

### BOARDS

			Lengths	Grades	
1	x	10 rougher head (13/16")	random lengths	Standard	
1	x	12 rougher head (13/16")	random lengths	Standard	
1	x	12 S1S2E bandsaw (7/8")	random lengths	Standard	

### FURRING

			Lengths	Grades	
1	x	3 SE (2-1/2" actual)	8, 10, 12, 14, 16 + random lengths	Standard	



## STOCKED WESTERN RED CEDAR

---

### CEDAR BOARDS - AND - TONGUE & GROOVE

#### Cedar Boards

7/8	x	4	S1S2E KD		3&BTR	D&BTR
7/8	x	6	S1S2E KD		3&BTR	D&BTR
7/8	x	8	S1S2E KD		3&BTR	D&BTR
7/8	x	10	S1S2E KD		3&BTR	D&BTR
7/8	x	12	S1S2E KD		3&BTR	D&BTR

#### Cedar T&G

1	x	6	WP-4 smooth T&G		3&BTR	A&BTR
---	---	---	-----------------	--	-------	-------

#### Grades

3&BTR	D&BTR
3&BTR	D&BTR
3&BTR	D&BTR
3&BTR	D&BTR
3&BTR	D&BTR



---

### CEDAR SIDING

#### Cedar Siding

1/2	x	6	rough beveled			A&BTR
1/2	x	8	rough			A&BTR
5/8	x	6	rough		3&BTR	
5/8	x	8	rough		3&BTR	
1	x	8	channel rustic KD		3&BTR	
1	x	10	channel rustic KD		3&BTR	

#### Grades

#### CUSTOM FINISH ANY COLOR

Our in-house, factory-finish-staining operation can pre-finish cedar or fiber cement and match any color to meet your customer's needs.



---

WESTERN RED CEDAR COMES IN RANDOM LENGTHS ONLY.

## OWENS CORNING -- FIBERGLASS INSULATION

We offer a complete line of Owens Corning fiberglass insulation – kraft or unfaced. Advanced fiber technology makes Owens Corning's insulation softer on the outside and stiffer on the inside, so it's more comfortable to touch and faster to install. Like all of the lines we carry, Owens Corning is made for people who consider their options carefully.



KRAFT	R-VALUE	SIZE	QTY /PKG	SQ. FT.
M90	R-13	3 1/2"X15"	5 BATTS	125.94
E52	R-13	3 1/2"X23"	5 BATTS	148.54
ME21	R-15	3 1/2"X15"	5 BATTS	67.81
RF40	R-19	6 1/4"X15"(E23)	6 ROLLS	48.96
RF41	R-19	6 1/4"X23" (E16)	6 ROLLS	75.07
ME23	R-21	5 1/2"X15"(K77)	5 BATTS	67.81
K55A	R-21	5 1/2"X23"	5 BATTS	89.13
ME24	R-30	9 1/2"X16"(W79)	4 BATTS	58.67
E56	R-30	9 1/2"X24"(W78)	4 BATTS	88.00
ME25	R-38	12"X16"(W70)	4 BATTS	42.66
E57	R-38	12"X24"(W71)	4 BATTS	64.00
BF92	R-49	14"X16"	5 BATTS	32.00
BF93	R-49	14"X24"	4 BATTS	48.00
<b>UNFACED</b>				
E51	R-13	3 1/2"X15"	5 BATTS	106.56
U73	R-13	3 1/2"X23"	4 BATTS	178.25
RU40	R-19	6 1/4"X15"(ME28)	6 ROLLS	48.96
RU41	R-19	6 1/4"X23"(ME29)	6 ROLLS	75.07
U89B	R-21	5 1/2"X15"	5 BATTS	77.50
U69A	R-21	5 1/2"X23"	5 BATTS	89.13
W65	R-38	12"X24"	4 BATTS	64.00
Raft-R-Mates	---	---	75/BOX	---

[WWW.OWENSCORNING.COM](http://WWW.OWENSCORNING.COM)

## SHORELINE VINYL -- FENCING & RAILING

Shoreline has earned a reputation for complete commitment to homeowner satisfaction. The company is available to interact directly with homeowners on vinyl and aluminum projects. Below, we've highlighted only a few of Shoreline's many available fencing and railing styles.

All vinyl railing systems by Shoreline are 100% vinyl, made in America, and comply with CCRR-0326 test specifications, guaranteeing safety and durability. The 300 Series shown below offers an affordable and classic look suitable for almost any style home. The T-shape of the top rail provides extra grip on stairs. Speak with a Bestway sales rep to learn more about the 300 series or other vinyl railing options by Shoreline, including the 100 Series, 200 Series, or 600 Series.



STANDARD HEIGHTS: 36" & 42"

STANDARD LENGTHS: 4', 5', 6', 8', & 10'

STANDARD STAIR RAIL SLOPES: 29-35" & 36-41"

STANDARD AND DESIGNER BALUSTERS AVAILABLE

GATES AVAILABLE IN ALL SIZES

[WWW.SHORELINEVINYL.COM](http://WWW.SHORELINEVINYL.COM)



SEE BELOW: A SAMPLE OF SHORELINE'S VINYL FENCING OPTIONS





SEE BELOW: A SAMPLE OF SHORELINE'S COASTAL FENCING OPTIONS

OCEANVIEW



BAY BREEZE



WAVECREST



SAILWIND



## MIRATEC -- TREATED EXTERIOR COMPOSITE TRIM

### NO TRIM PERFORMS LIKE MIRATEC.

- Resists moisture, mildew, rot and termites.
- Will not check, split or crack.
- Reversible with a clear, cedar wood grain texture on one side and a smooth surface on the other.
- Handles like wood; easy to machine, cut and nail.
- Patented technology makes MiraTEC a solid board with uniform properties throughout.
- Primed with an ultra-low VOC white primer containing a mildewcide.
- Building code compliant (ESR-3043).
- 50-year limited warranty.
- [WWW.MIRATECEXTIRA.COM](http://WWW.MIRATECEXTIRA.COM)

**MIRATEC**®  
By JELD-WEN

1" ACTUAL (16 ft lengths)			3/4" ACTUAL (16 ft lengths)		
5/4	x	4	1	x	3
5/4	x	5	1	x	4
5/4	x	6	1	x	5
5/4	x	8	1	x	6
5/4	x	10	1	x	8
5/4	x	12	1	x	10
5/4	x	16	1	x	12
			1	x	16





## VEKADECK -- PVC DECKING



### WHY VEKAdeck?

- **Resists Fading:** Looks beautiful season after season without costly maintenance.
- **Insect Resistant:** 100% PVC deck board blend is impervious to insects.
- **Splinter-Free:** PVC deck compound will not splinter, flake or peel.
- **Dimensionally Stable:** Patented formulation expands/contracts less than 0.05%.
- **Slip Resistant:** Attractive embossed wood grain anti-skid surface is slip resistant.
- **Fire Resistant:** VEKAdeck self-extinguishes in the event of fire.
- **Water Resistant:** VEKAdeck will not absorb moisture, making it ideal for high humidity and marine environments such as boat docks and pools.
- **Low-Maintenance:** Never needs painting or sealing.
- **Easy To Install:** Works as easily as traditional lumber using basic tools.
- **Light Weight:** VEKAdeck is lighter than wood and composite materials.
- **Easy To Clean:** Impervious to common environmental contaminants and cleans with mild soap and water.
- **Environmentally Friendly:** PVC is recyclable. No chemical treatments necessary.



**VEKADECK COMES IN 5/4" x 6"**

**AVAILABLE LENGTHS = 12', 16' & 20'**

**12" FASCIA ALSO AVAILABLE**

[WWW.VEKAOLP.COM](http://WWW.VEKAOLP.COM)

**VEKADECK EMPLOYS UNIQUE CROWN AND RADIUS EDGES TO PROMOTE WATER RUNOFF**

## XO BUILDING SOLUTIONS -- PVC TRIM

**XO ARCHITECTURAL-GRADE MOULDINGS:** Architectural-grade mouldings are a top choice for rot-free wood replacement. We offer popular patterns—from classic to modern—with countless customization options.

**XO TRIM EDGES:** Trim edges are precision sharp, never rounded or dull, and available in both standard sawn or with sealed edges.

**XO SMOOTH:** XO Smooth offers double-sided, satin-smooth boards available in sheets.



### 3/4" ACTUAL TRIMBOARDS

1" X 4" X 18' Smooth  
1" X 6" X 18' Smooth  
1" X 8" X 18' Smooth  
1" X 10" X 18' Smooth  
1" X 12" X 18' Smooth

### 1" ACTUAL TRIMBOARDS

5/4" X 4" X 18' Smooth  
5/4" X 6" X 18' Smooth  
5/4" X 8" X 18' Smooth  
5/4" X 10" X 18' Smooth  
5/4" X 12" X 18' Smooth

### 1" ACTUAL TRIMBOARDS WITH J-POCKET

5/4" X 4" X 18' Smooth  
5/4" X 6" X 18' Smooth

### 1" ACTUAL CORNERS NO J-CHANNEL

5/4" X 4" X 20' Smooth  
5/4" X 6" X 20' Smooth

### 1" ACTUAL CORNERS WITH J-CHANNEL

5/4" X 4" X 18' Smooth  
5/4" X 6" X 18' Smooth

### BEADBOARD

1/2" X 5 1/2" X 18'

### PANELS

1/2" - 4' X 8' Smooth  
1/2" - 4' X 10' Smooth  
3/4" - 4' X 8' Smooth

### PROFILES

#180 Brickmould 1 1/4" X 2" X 17'  
#75 Bed Moulding 9/16" X 1-5/8" X 16'  
#45 Crown Moulding 9/16" X 5-1/2" X 16'  
#47 Crown Moulding 9/16" X 4-5/8" X 16'  
#47 Crown Moulding 9/16" X 4-5/8" X 16'  
#49 Crown Moulding 9/16" X 3-5/8" X 16'  
#197 Drip Cap 11/16" X 1-5/8" X 17'  
#164 Base Cap 11/16" X 1-1/8" X 16'  
#287 Rake Moulding 1-1/16" X 2" X 16'  
#937 Sill Nosing 1-3/8" X 1-5/16" X 17'  
#105 Quarter Round 3/4" X 3/4" X 16'  
#L068 Rams Crown 1-13/32" X 2" X 16'  
#093 Cove 3/4" X 3/4" X 16'  
#L269 Lattice 1/4" X 1-1/2" X 16'

**XO PVC is made with a special hybrid solution that prevents chipping and denting. The trim can be milled and machined and cuts more smoothly than its alternatives.**



## UNION CORRUGATING COMPANY -- STEEL PANELS

### UNION. YOUR ROOF. FOR LIFE.

Metal is one of the most durable, weather-resistant roofing materials on the market today. And Union's weatherproof roofing materials have the highest UL ratings for fire, wind, and impact-resistance compared to other roofing materials.

In most areas, these weatherproof metal roofs can be expected to last three or more times longer than a comparable asphalt shingle roof!

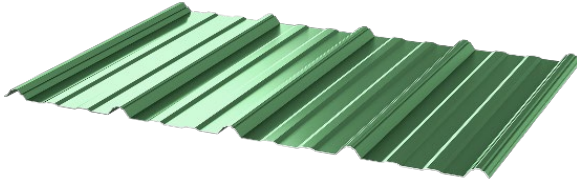


### UNION PRODUCTS ARE:

- Made to Order
- Energy Star Certified
- Covered by a 45 Year Paint Warranty
- Covered by a 25 Year Substrate Warranty
- Made to protect the environment and save money!



## AVAILABLE STYLES



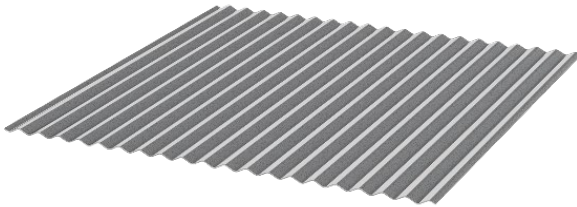
### MasterRib – Roofing & Wall Panel

- Exposed Fastener
- Coverage: 36" Coverage
- Rib Height: 3/4"
- Minimum Recommended Slope: 3:12
- Suitable for solid decking or open framing



### 2-1/2" Corrugated – Wall Panel

- Fastener: Exposed Fastener
- Coverage: 24" Coverage
- Rib Height: 1/2"
- Minimum Recommended Slope: 3:12
- Suitable for solid decking or open framing



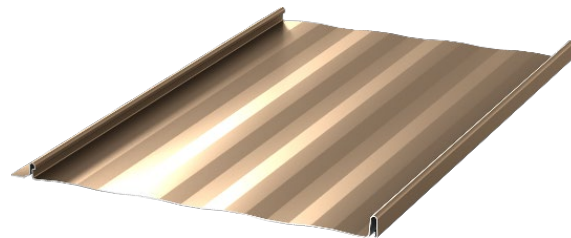
### 1-1/4" Corrugated – Wall Panel

- Fastener: Exposed Fastener
- Coverage: 24" Coverage
- Rib Height: 1/4"
- Minimum Recommended Slope: 3:12
- Suitable for solid decking or open framing



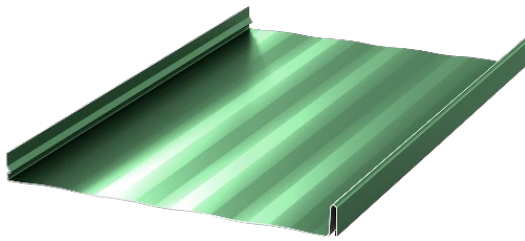
### 5V – Roofing & Wall Panel

- Fastener: Exposed Fastener
- Coverages: 24" Coverage
- Rib Height: 1/2"
- Minimum Recommended Slope: 3:12
- Suitable for solid decking



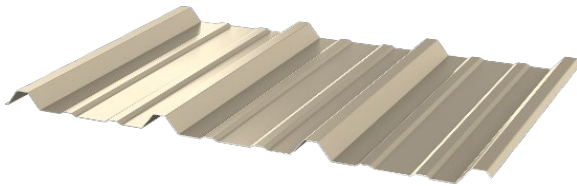
### Advantage-Lok II – Roofing Panel

- Fastener: Concealed Fastener, Standing Seam
- Snap Locking Ribs, Screw Flange Installation
- Coverages: 12" and 16" Coverage
- Rib Height: 1"
- Minimum Recommended Slope: 3:12
- Suitable for solid decking



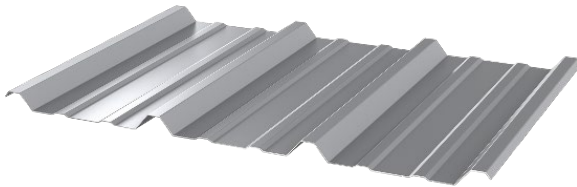
#### **SL150 – Roofing Panel**

- Fastener: Concealed Fastener, Standing Seam
- Snap Locking Ribs, Clip Installation
- Coverages: 12" and 16" Coverage
- Rib Height: 1-1/2"
- Minimum Recommended Slope: 3:12
- Suitable for solid decking



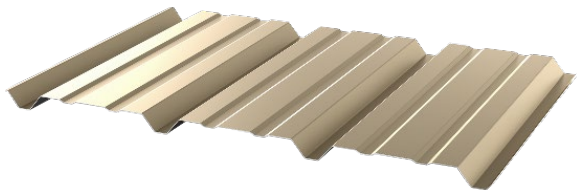
#### **PBR – Roofing & Wall Panel**

- Fastener: Exposed Fastener
- Coverage: 36" Coverage
- Rib Height: 1-1/4"
- Minimum Recommended Slope: 1:12
- Suitable for solid decking or open framing



#### **R Panel – Wall Panel**

- Fastener: Exposed Fastener
- Coverage: 36" Coverage
- Rib Height: 1-1/4"
- Minimum Recommended Slope: 1:12
- Suitable for solid decking or open framing



#### **IR Panel – Wall Panel**

- Fastener: Exposed Fastener
- Coverage: 36" Coverage
- Rib Height: 1-1/4"
- Minimum Recommended Slope: 1:12
- Suitable for solid decking or open framing



#### **7/8" Corrugated – Roofing & Wall Panel**

- Fastener: Exposed Fastener
- Coverage: 36" Coverage
- Rib Height: 7/8"

[WWW.UNIONCORRUGATING.COM](http://WWW.UNIONCORRUGATING.COM)

**\*Additional styles available.**



### EASYTRIM REVEALS

The EasyTrim Reveals cladding system is beautiful, easy to install, cost-effective *and* designed to protect what's behind it for years to come. Fiber cement trim from EasyTrim consists of two depths of extruded aluminum that work together to create one complete system for panel or lap siding. Trim profiles are made from ultra-durable 6063-T5 aluminum. Available in standard finishes and custom colors. Visit [www.easytrimreveals.com](http://www.easytrimreveals.com).



EZ.2 – Round Outside Corner Panel Trim shown in clear silver anodized.



EZ.7 – 2-Piece Vertical U Panel Trim shown in clear silver (left) and black anodized (right).

**EASYTRIM REVEALS, QUICKPANEL & FASTPLANK AVAILABLE BY SPECIAL ORDER**



## QUICKPANEL SYSTEMS

The QuickPanel aluminum cladding system addresses every element of exterior building design and cladding system delivery – to provide a superior integrated 4mm ACM Rainscreen System. System-wide drainage, circulation, and ventilation are integral to the QuickPanel® System's innovative design, to ensure the integrity and longevity of your building.

### FEATURES

**Wind Load Tested:** Proven performance in harsh weather conditions. Panels (ASTM E330) withstand wind load tests exceeding 99.84 pfs shielding your structure in the strongest winds.

**No Face Fasteners** deliver a smooth, clean, and modern aesthetic without unsightly face fasteners.

**Fire Rated Panels:** Panels consist of two sheets of coil coated 3000 series or 5000 series alloy aluminum bonded to a mineral filled fire resistant (FR) core.

**EZ.Lock® Trim** allows everything to be measured and cut on-site eliminating the need for any off-site fabrication and makes installation fast and easy.

**UV Protected:** panels are sealed with paints specially formulated to defend long-term against UV radiation, staining, dirt, chipping, peeling, and fading.

**EZ.Slope®:** This patented technology provides revolutionary water-management and drainage to reduce your total maintenance time and cost.

**Compression Assembly:** QuickPanel Systems can accommodate up to 5/8" of building compression between floors.

**ColorMatch®:** QuickPanel Systems are only limited by your imagination, offer a wide-range of standard color options, and can easily accommodate custom colors.





## FASTPLANK SYSTEMS

Protection from rain, rot, rust, hail, wind, heat, cold, smoke, and fire are fundamental characteristics of aluminum building materials that no longer come at the expense of long-term durability. Aluminum is a no-maintenance building material, plus, when it's time to update your look, FASTPLANK™ aluminum siding can be removed, easily repainted or refinished, and re-installed at a fraction of the cost and time of a complete siding replacement.



Five standard woodgrain options include Light Cherry, Knotty Pine, Dark Walnut, Dark Fir, and Dark Cherry. Integrate FastPlank into your exterior design for new home, renovation, or commercial siding projects. Delivering modern elegance in a long-lasting, quality package for years to come!



**HELLO FROM  
THE YARD AND  
FROM THE ROAD...**





**DISTRIBUTION LOCATIONS**

3877 LUKER ROAD, CORTLAND, NY

4377 STATE HIGHWAY 58, GOUVERNEUR, NY

115 BESTWAY DRIVE, CRESCO, PA

**TELEPHONE**

607-753-8261

**WEBSITE**

[WWW.BESTWAYLUMBER.COM](http://WWW.BESTWAYLUMBER.COM)