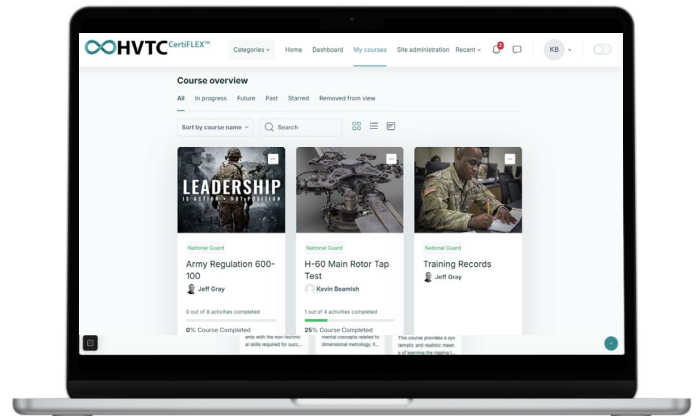


# ENTERPRISE-LEVEL INFRASTRUCTURE FOR DIGITAL TRANSFORMATION AND WORKFORCE MODERNIZATION

## Skills-First Training

- Automate the administration of any training program
- Combine structured training with point-of-need task support for real-time maintenance operations
- Certify workforce competencies and record individual skills
- Knowledge management warehouse with real-time content updates
- Leverage AR/VR, multimedia, and digital tools to deliver immersive, interactive training for enhanced retention



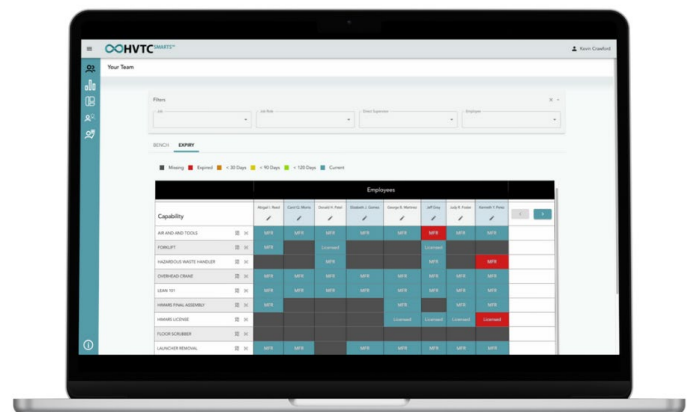
## Rapid Deployment

- Stand up systems in weeks, not years
- Accessible, remote technical training anytime, anywhere on any device
- Quickly author and distribute new content to the field
- Built-in AI quickly accesses content across platforms
- Adaptable for any operational environment with cloud and standalone capabilities
- Configurable for full range of military and industrial equipment and related systems



## Operational Readiness

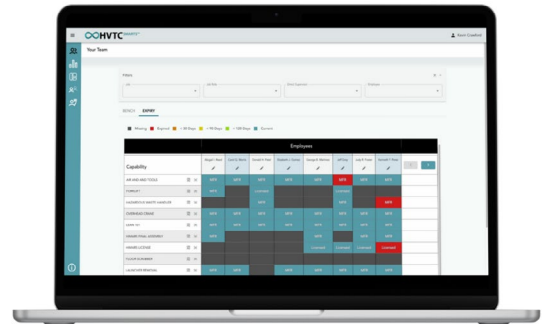
- DISA IL4-Authorized platforms live on NIPRNet
- CAC-enabled systems for operational security
- Leverage customer content for an infinitely scalable, self-sustaining training ecosystem
- Share institutional knowledge to standardize maintenance practices across the enterprise
- Easily facilitates cross-training across critical tasks
- Communicates with existing customer systems





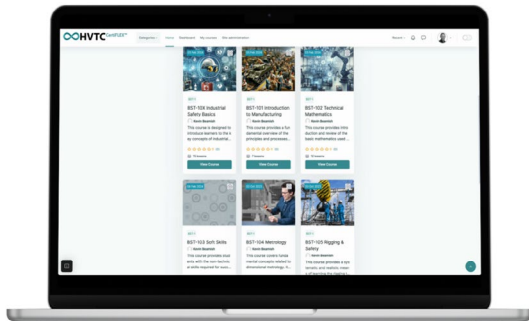
## GEMINI™

Point-of-need reference tool integrating AR/VR, videos, images, and technical documents and offering real-time AI assistance for training, maintenance, and troubleshooting.



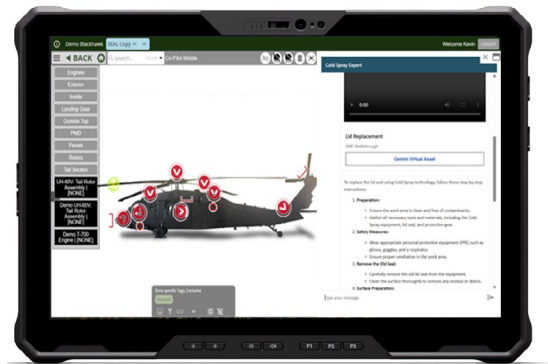
## SMARTS™

Workforce evaluation system tracking individual skills, capabilities, and credentials. Instantly report on personnel readiness and organizational bench strength.



## CERTIFLEX™

Online training delivery platform with individual or collective training modules. Integrates with existing LMS to provide rapid content authoring, publishing, and administration, reducing bureaucratic overhead.



## TAILWIND™

Integrated AI companion to enhance technical training for learners and instructors. Leverage technical content to guide learners and boost instructor productivity by generating learner assessments.

**POC:** Kevin Beamish  
**Phone:** 615-708-9373  
**Email:** [kbeamish@bgworkforce.com](mailto:kbeamish@bgworkforce.com)

**POC:** Clint Hall  
**Phone:** 360-486-4384  
**Email:** [chall@bgworkforce.com](mailto:chall@bgworkforce.com)

**POC:** Chelsi Pulte  
**Phone:** 682-597-4993  
**Email:** [cpulte@bgworkforce.com](mailto:cpulte@bgworkforce.com)

