

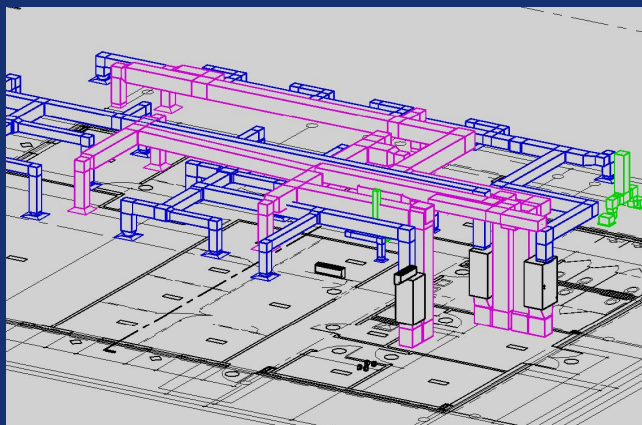


TOTAL ARC FLASH SAFETY, LLC

RISK MITIGATION & ENGINEERING

MEP ENGINEERING

- * Electrical Design (15kV to 120/240V Single Phase)
- * Mechanical and Plumbing Design
- * Design-Bid-Build/Design-Build
- * Lighting Design/Photometric Calculations
- * Site Investigation & Pre-Construction Consulting and Planning
- * 3D Modeling/LIDAR Scanning
- * REVIT MEP



ELECTRICAL CONSULTING

- * Emergency Power Systems
- * Arc Flash, Short Circuit, Fault Current, Coordination Studies
- * Industrial - Electrical & Instrumental
- * SKM PowerTools

FIRE PROTECTION

- * Qualified Fire Protection Engineering (QFPE) Services
- * Life Safety/Risk Assessment
- * Fire Pump Design/Replacement
- * Fire Alarm/Mass Notification System Design (FAMNS)
- * REVIT MEP



LIGHTNING PROTECTION

- * Lightning Protection System design
- * Grounding and Equip-potential bonding
- * Electrical Surge Protection
- * Certified Surge Protection Institute (LPI)

Total Arc Flash Safety, LLC. offers clients sound engineering solutions that protect personnel and equipment while enhancing reliability.

SERVICES:

MEP ENGINEERING

- * Mechanical, Electrical, & Plumbing design (MEP)
- * HVAC
- * Custom Floorplan Drawing Creation (Existing or New) Using 3d LIDAR Scanning Technology
- * Utility Coordination
- * Photometric Analysis
- * Industrial - Power Design
- * BIM modeling

FIRE PROTECTION

- * Qualified Fire Protection Engineering (QFPE)
- * Fire Pumps
- * Fire Suppression Systems
- * Clean Agent Fire Suppression Systems
- * Fire Alarm/Mass Notification System Design (FAMNS)
- * Life Safety Consulting

ELECTRICAL POWER STUDIES

- * Arc Flash Study and Labels
- * Electrical Coordination Study
- * Overcurrent Protective Device Trip Setting Coordination
- * Fault Current Analysis
- * Equipment Evaluation
- * Electrical Load Analysis
- * Power Quality/Distribution Issues
- * Site Investigation

LIGHTNING PROTECTION

- * Lightning Protection System Design (Existing or New)
- * Grounding and Bonding Layout Design
- * Electrical System Surge Protection
- * Site Investigation and Damage Assessment

PROJECTS:

MEP PROJECTS:

- * Scottish Rite Building - 40,000 square foot, 100 year old building. Complete replacement of entire electrical system
- * Various Government Buildings - MEP, FA/MNS, Life Safety, Lightning Protection, etc.

ELECTRICAL PROJECTS:

- * Willis Knighton Health - 5 hospitals and multiple medical offices with all services including thermal imaging, over 7,000 arc flash labels
- * SK Primacor - Instrumentation - new DCS front end - 2,500 I/O

FIRE PROTECTION PROJECTS:

- * Multiple government buildings which required QFPE services ranging from fire pump replacements, fire alarm/mass notification system replacements, to risk assessments

LIGHTNING PROTECTION PROJECTS:

- * Lightning protection for multiple government facilities and residential buildings
- * Pilot Water Systems - Grounding and bonding layouts with MEP detail sheets

Benton, LA
207 Fairburn Ave.,
Suite B Benton,
Louisiana 71006

Phone (Louisiana): (318) 464-3056
Email: Engineering@totalarcflashsafety.com

Houston, TX
526 Kingwood Dr. #505
Texas 77339

Phone (Texas): (832) 275-0642
Email: Bthreadgill@totalarcflashsafety.com

www.totalarcflashsafety.com

