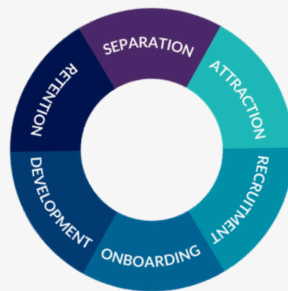




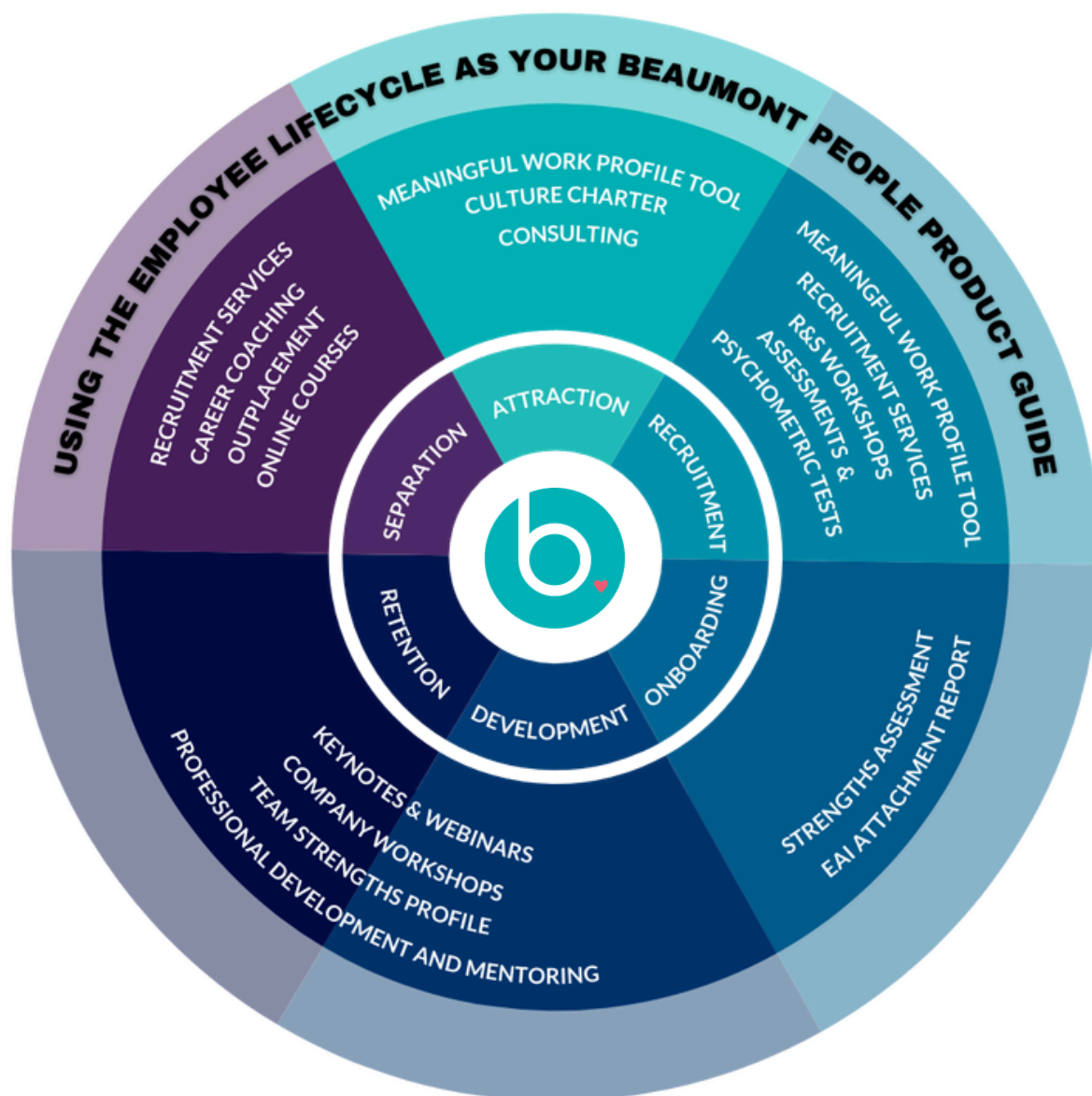
CAREER COACHING AND TRANSITION SUPPORT SERVICES



Welcome to the Beaumont People Consulting and Professional Development Services

We work alongside our Recruitment Division to provide individuals and organisations with personalised expertise throughout the various stages of the employee life cycle

Find out about our full suite of Consulting Services [here](#).



THE BEAUMONT PEOPLE DIFFERENCE



Beaumont People is a recruitment, people and culture firm passionate about placing people first and prioritising people as an organisation's greatest asset.

Established in 2001 by Nikki Beaumont, we specialise in delivering recruitment, people and culture solutions across diverse industries including Charity and Not For Profit, Education and Professional Services organisations.

An independently owned business, our purpose is to enrich lives and livelihoods through meaningful work, supporting the development of workplaces where individuals deliver and feel valued. We believe that when people engage in personally significant work, it not only motivates them but also transforms organisations, communities, and society.

Our commitment has led us to be early adopters in 2020 of the 4-day work week, commission innovative research into the four factors of meaningful work along with annual insights into the world of work. We also have a well-established and award winning mentoring and professional development program, LEAD, fostering growth and collaboration across all sectors and with scholarship places available.

We believe that by placing people first, we contribute to a better professional landscape and society in Australia.

visit beaumontpeople.com.au to learn more about us



**Great
Place
To
Work®**

Certified
MAY 2024-MAY 2025
AUS



We are all unique. Such complexity means there is no prefabricated solution to support you through times of transition. Our outplacement works in a high touch, tailored way, equipping people with the tools specific to their needs, in real-time, and in a location convenient to them.

Our packages are based on a foundation of strengths and values-based-thinking. We focus on the outcome people seek, individual by individual, with recruitment industry connectivity to support success. As a result, each package is tailored towards achieving these goals, and is unique to every participant.

In line with our purpose, we partner with accredited social enterprise Glow Up bringing together an Advanced Learning Platform, a 300-strong Accredited Coach Community, and Community/NFP Partners. Since inception, Glow Up have helped over 1900 refugees and new migrants find meaningful work in Australia and beyond.

The highly-qualified (e.g. ICF, IECL, Masters of Coaching Psychology, HR) passionate Coaches help individuals in a bespoke one-on-one environment, illuminating new career pathways and nurturing self-reliance, resilience and positivity. With a wealth of diversity across the network, you can be assured of tailored coach-matching, compassionate interactions, and optimal job outcomes.

And when you choose our combined service you know you will be supporting people facing barriers to meaningful employment with heart-felt career guidance, so everyone can chase their work dreams – positive social impact you can be a part of.

The Beaumont People recruitment team are always available to connect with participants who request this.

PRICING GUIDE



Visit our career coaching page [here](#)

Learn about Meaningful Work [here](#)

**3 Session
Voyager
package**

\$1,500

**6 Session
Explorer
Outplacement
package**

\$3,000

**Add Skills
Discovery
for**

\$545

Includes report and debrief.
Find out about Skills Discovery
[here](#)

Add LEAD

our Mentoring &
Professional
Development
Program.

Discover more [here](#)

An introductory online group session can be arranged at additional cost
Bespoke packages also available

All prices exclusive of GST

A 10% discount is applicable to Registered Public Benevolent Institutions,
Health Promotion Charities, Environmental Charities and International Aid.

OPTIONAL GROUP SESSION

For larger cohorts, a group briefing can be an effective way to introduce the outplacement experience. It provides an overview of the job search process, a walkthrough of the platform, and an introduction to the coaching support available. This session helps to create a sense of structure and shared understanding, ensuring participants feel informed, supported, and aligned from the outset.

We outline what participants can expect from the program and the value they'll gain from it. To help them build momentum, we also set a few initial tasks to complete ahead of their first coaching session.

THE SESSION CAN COVER

- Current job market
- Navigating AI tools and technology in your career
- Keyword optimising resumes
- The importance of cover letters
- Creating a career plan

\$5,000 + GST

A 10% discount is applicable to Registered Public Benevolent Institutions, Health Promotion Charities, Environmental Charities and International Aid.



3 SESSION PACKAGE : VOYAGER

Our most popular package, in three sessions we help you to identify your strengths and values, design your career strategy, polish your pitch and align your personal profile. We also dive into networking and interviewing preparation.

Topics include CV's, cover letters, reading job ads effectively, job boards, social media strategies, LinkedIn, career trajectory plan, networking and interviewing.

EACH BESPOKE PROGRAM INCLUDES:

- **Dedicated coach**
- **Online career assessment**
- **3 x one-hour coaching sessions delivered via video conference**
- **3 x 10-minute check-ins**
- **Task-oriented workbook to keep you on track**
- **Review of your updated profile, CV and cover letters**
- **Access to the Glow-Up learning platform and Voyager content**



6 SESSION PACKAGE : EXPLORER

This program covers all areas of the job search spectrum. We help you identify your strengths and values, design your career strategy, polish your pitch and align your personal profile.

Topics include CV's, cover letters, reading job ads effectively, job boards, social media strategies, LinkedIn, career trajectory plan, networking and interviewing. planning, time management and wellbeing, job search reasoning, networking and emails, interviewing techniques, psychological assessments, employment checks, and working with recruiters.

EACH BESPOKE PROGRAM INCLUDES:

- **Dedicated coach**
- **Online career assessment**
- **6 x one-hour coaching sessions delivered via video conference**
- **6 x 10 minute check-ins**
- **Task-oriented workbook to keep you on track**
- **Review of your updated profile, CV and cover letters**
- **Access to the Glow-Up learning platform and Explorer content**





Terms and Conditions

All pricing is ex-GST.

3 session packages are invoiced in full upon participants activating the service by opting in to participate in their Transition Program.

75% of 6 session packages is invoiced upon participants activating the service by opting in to participate in their Transition Program with the remaining 25% invoiced upon participants activating the final 3 coaching sessions.

If a participant terminates their engagement in the program before activating the final 3 coaching sessions, we will not charge you for the remaining 25% of the six session package fee for that participant.

If a participant terminates their engagement in the program after they have enrolled in the online courses we will not refund any fees you have paid to us; however, we will provide you with a credit for any unused sessions at a value of \$150 per session (minus 10% for Charities) which you can apply towards future outplacement packages, individual or team coaching, professional development, strengths profiling or places on our LEAD mentoring program*

For outplacement, all participants have 6 months from invoicing to commence their Transition program (or client to advise preferred time span).

Programs are delivered via an online content library, video-conference coaching and telephone/email.

Basic tech support provided.

Full terms are provided separately [here](#) and also via e-sign document. Should you wish to proceed with the proposal please advise the authorised signatory for these to be sent to.

Privacy Policy

*We adopt this policy in relation to refunds and credits because, once the participant has enrolled in the online courses, we are committed to pay our third party suppliers for a portion of the supplier costs we need to pay to deliver the program. Additionally, a lot of the resources we need to commit to deliver the program are frontloaded, including the triage processes we undertake, our work to match the participant with an appropriate coach and related onboarding services we provide to set up the participant in the program.

Contact us for more details

coaching@beaumontpeople.com.au

Head office: Level 29, 259 George Street, Sydney NSW 2000. Phone: 02 9279 2777

beaumontpeople.com.au