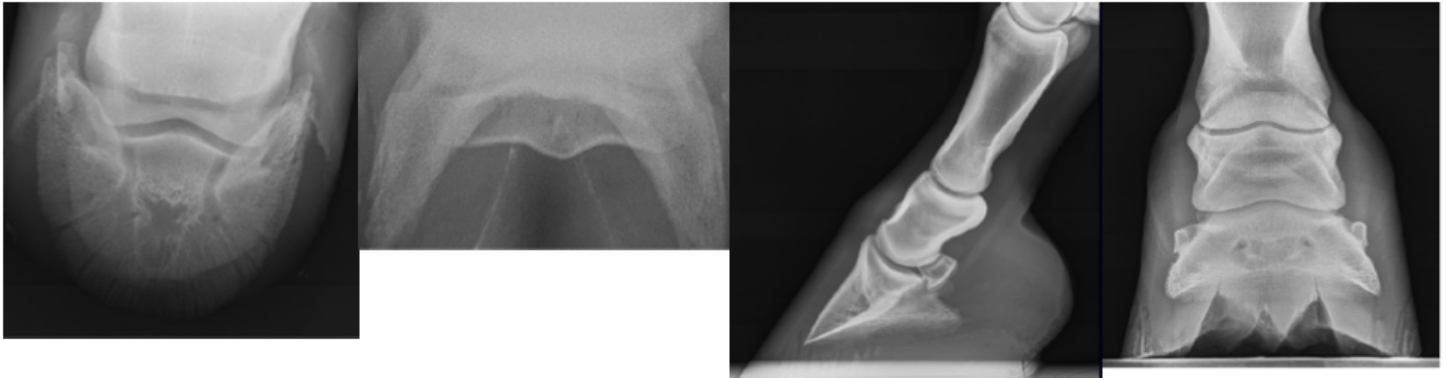


## Requested X-Rays for Pre-Purchase Exam

**Front feet:** *We kindly request front shoes removed, foot cleaned and frog sulcus packed.*

Views requested: Navicular DP 65 degree, Navicular-Skyline, Lateral foot (weight-bearing), DP foot (weight-bearing).

**Hind feet:** Lateral foot (weight-bearing), DP foot (weight-bearing)



**Front fetlocks:**

Lateral, DP, Lateral Oblique (DLPMO), Medial Oblique (DMPLO), Flexed Lateral

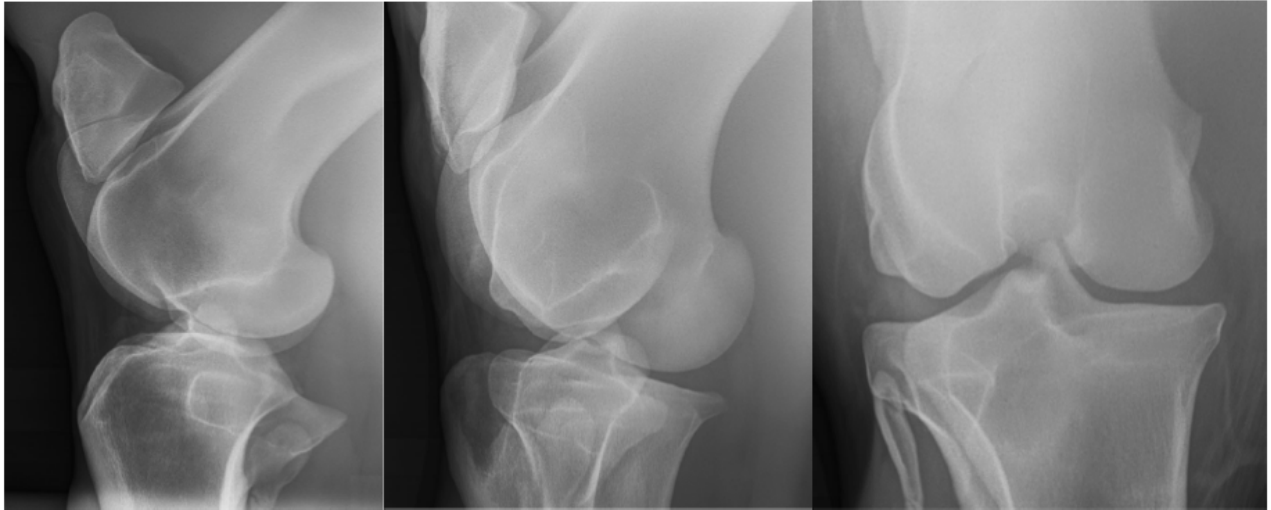
**Hind fetlocks:**

Lateral, DP, Lateral Oblique (DLPMO), Medial Oblique (DMPLO), Flexed Lateral



**Stifles:**

Lateral, Lateral Oblique, Caudal-Cranial (DP)



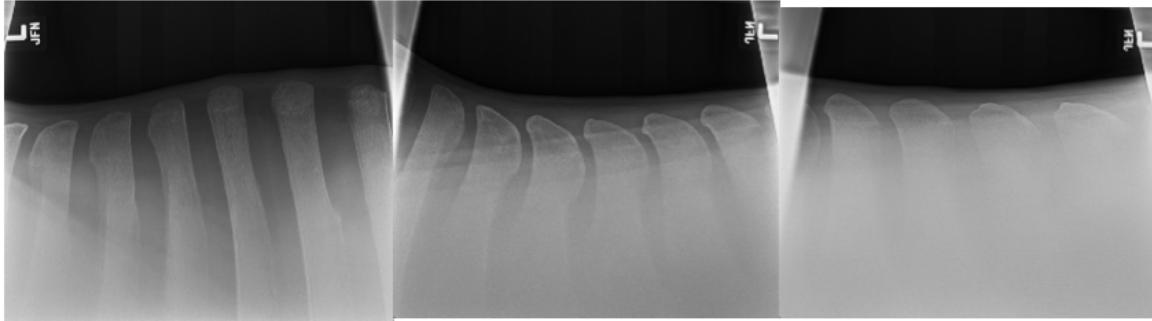
**Hocks:**

Lateral, DP, Oblique (DLPMO), Medial Oblique (DMPLO)



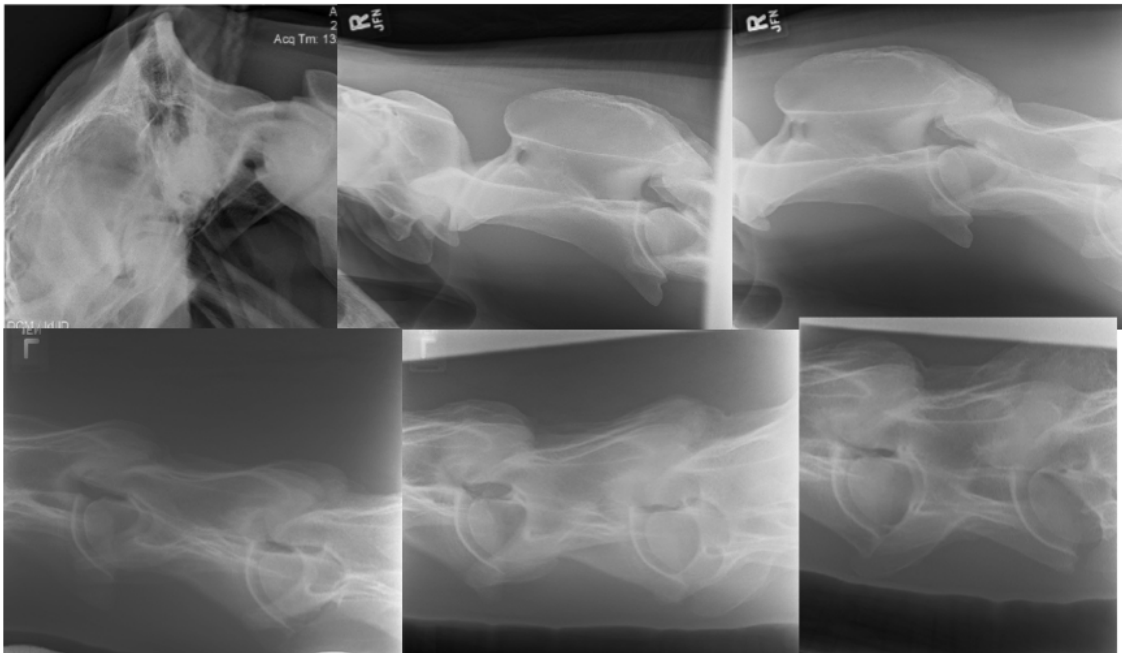
**Dorsal Spines:**

Lateral views from Withers to Lumbar region



**Cervical spine:**

Lateral views of cervical spine Skull-C1 through C6-C7 articulations



If the cervical or thoracic/lumbar spine views cannot be performed in the field, kindly refer us to a local clinic that could perform these views. We forward to working with you on this purchase exam. Please call or email our office at any time if we can be of any assistance.