



SITE LIGHT RENTALS

SEE MORE, ACHIEVE MORE

Company Overview and Product Application Guide



Index

Chapter 1 – Company Overview	04-05
Chapter 2 – Environmental and wildlife Friendly	06-07
Chapter 3 – Telescopic and Trailer Mounted Units - Small – Medium - Medium – large - Pedestrian Crossing - Trailer Mounted	08-15
Chapter 4 – Fixed Pole Solar Street Lights - Single Outreach - Dual Outreach	16-19
Chapter 5 – Jonker Light (Mobile Stadium Lights) Mobile High-Mast Street Light	20-25
Chapter 6 – Miscellaneous Products - Signals Blocks - CCTV Power Packs - Radar Power Packs - Block Mounted Flood Lights	26-31
Chapter 7 – Engineering and Innovation	32-33
Chapter 8 – Technical Application - Roadway - Intersections - Pedestrian Crossing - Spacing Table – V3, V5, P Category (Sample only)	34-49
Chapter 1 – Setup Guide	50

Our Services



Site Light Rentals is a specialist mobile lighting enterprise, providing temporary lighting solutions to the construction and resource industries across Australia.

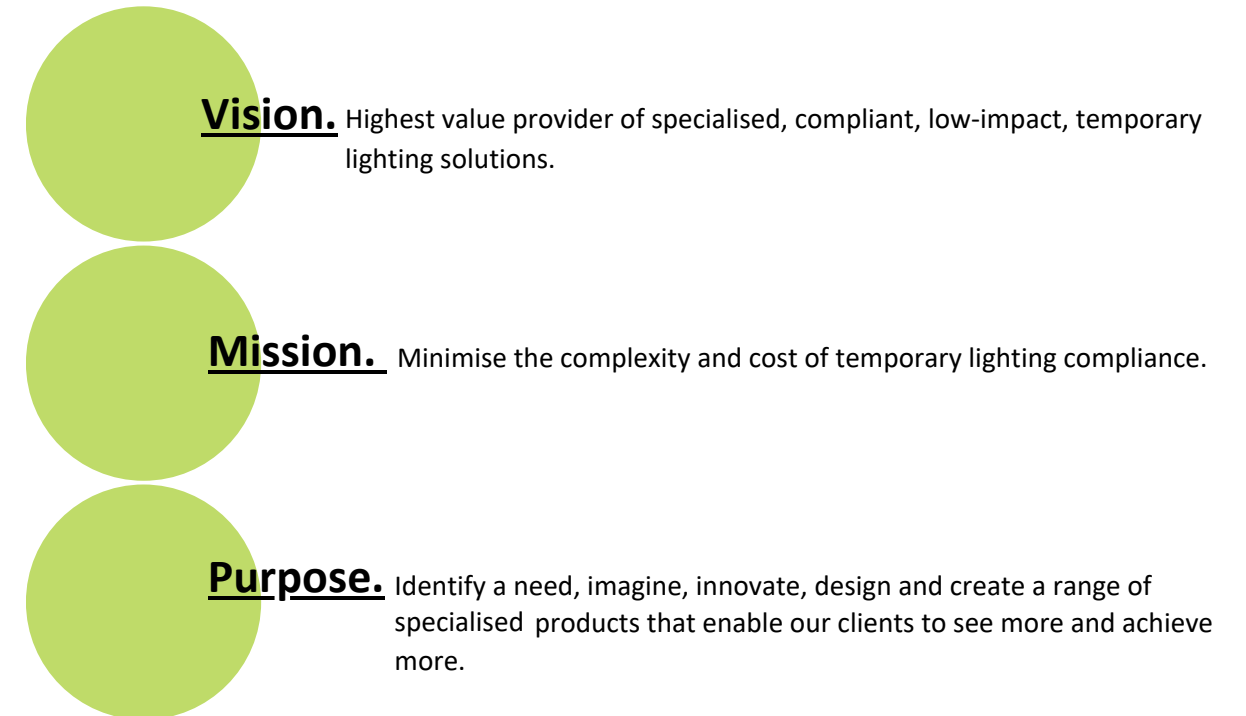
With a diverse range of mobile lighting solutions, Site Light Rentals was established to improve the efficiency, safety and compliance in the work environment on night shift operations throughout Australia's resource and construction industries. The resulting benefit of the new technology also significantly reduces operational costs associated with mobile lighting products.

Providing a high standard to cater for a diverse client base including International mining companies, Tier 1 and Tier 2 civil contractors as well many smaller contractors within the Construction and Events industries. We are a privately owned and operated Australian company with over 20 years' experience in the Hire, Rental and Sales of equipment to the Resource, Construction and Agricultural industries.

OUR DIFFERENCE - Site Light Rentals have a successful history of working with clients to resolve lighting and efficiency issues while reducing project costs. Supported by an experienced team of specialist Civil, Mechanical and Lighting Engineers we are not a standard hire company, we design and manufacture specialist products compliant to the relevant standards for the use of;

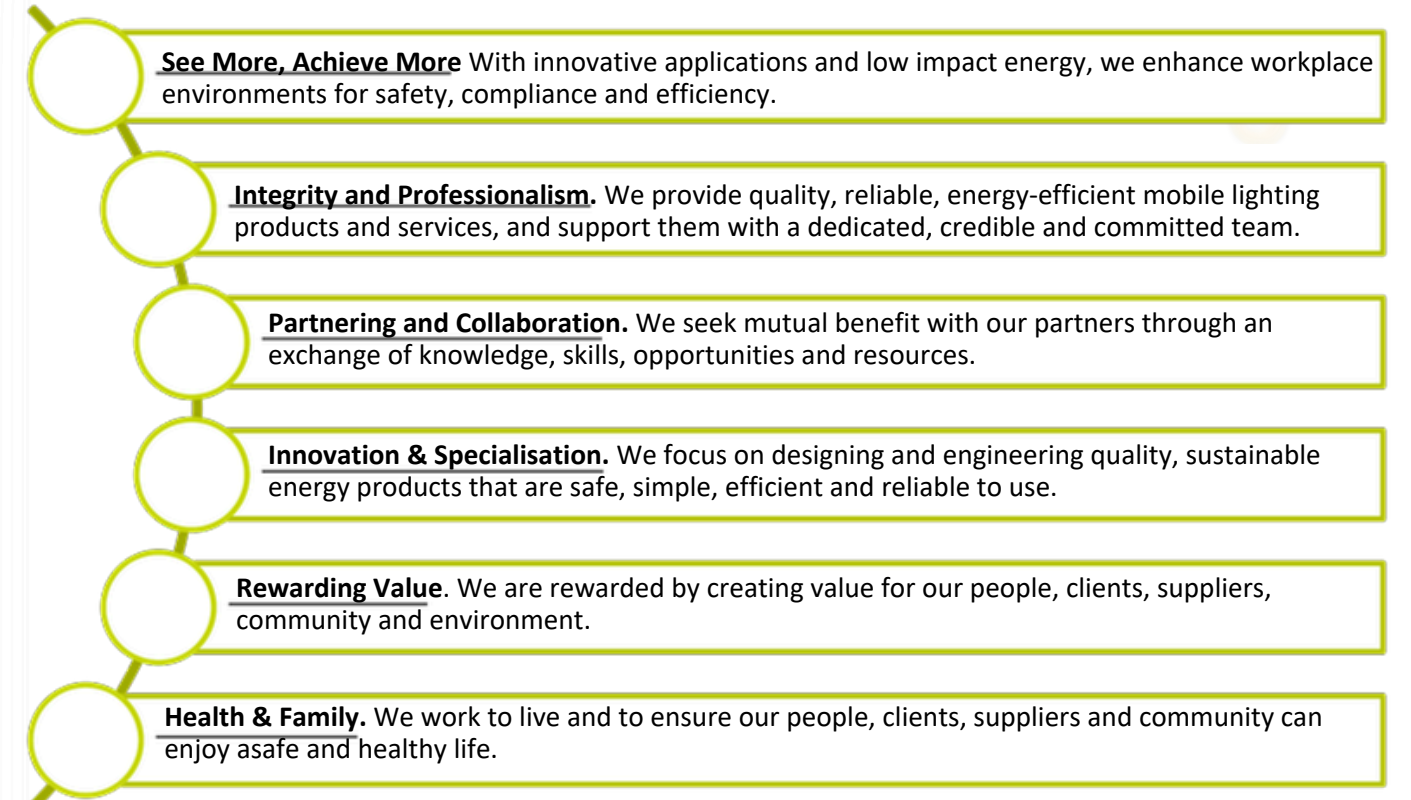
- Temporary Street Lighting (Designed to AS 115 8) Temporary Pedestrian Lighting (Designed to AS 115 8) Temporary Intersection Lighting
- Temporary Lighting for construction/building/demolition works
- Temporary Lighting for in pit mining operations, ROM Pad, Works around Coal Coal Handling Prep Plants (CHPP)

SEE MORE, ACHIEVE MORE WITH SITE LIGHT RENTALS.



COMPANY VALUES

Site Light Rentals is committed to assisting our customers to thrive whilst at the same time ensuring our own success –



Environmental and Wildlife Friendly

Wildlife

Our wild life friendly lighting is engineered to a low-colour temperature (Warm yellow/ amber) to significantly reduce blue-spectrum light pollution. Many nocturnal species and local ecosystems are highly sensitive to blue light, which can disrupt natural behaviours and habitats. By utilizing long-wavelength technology (amber, red, and orange tones), we minimize ecological impact while ensuring a safe, well-lit environment for pedestrians.

A selection of our products also features integrated smart technology to maximize energy efficiency and minimize ecological impact. This system ensures the lighting automatically dims to a 20% standby output during periods of inactivity, significantly reducing energy consumption and light pollution. When movement is detected, the system gradually ramps up to 100% illumination, providing a safe and responsive environment for pedestrians only when it is truly needed.



Environmental and Wildlife Friendly

Environmental

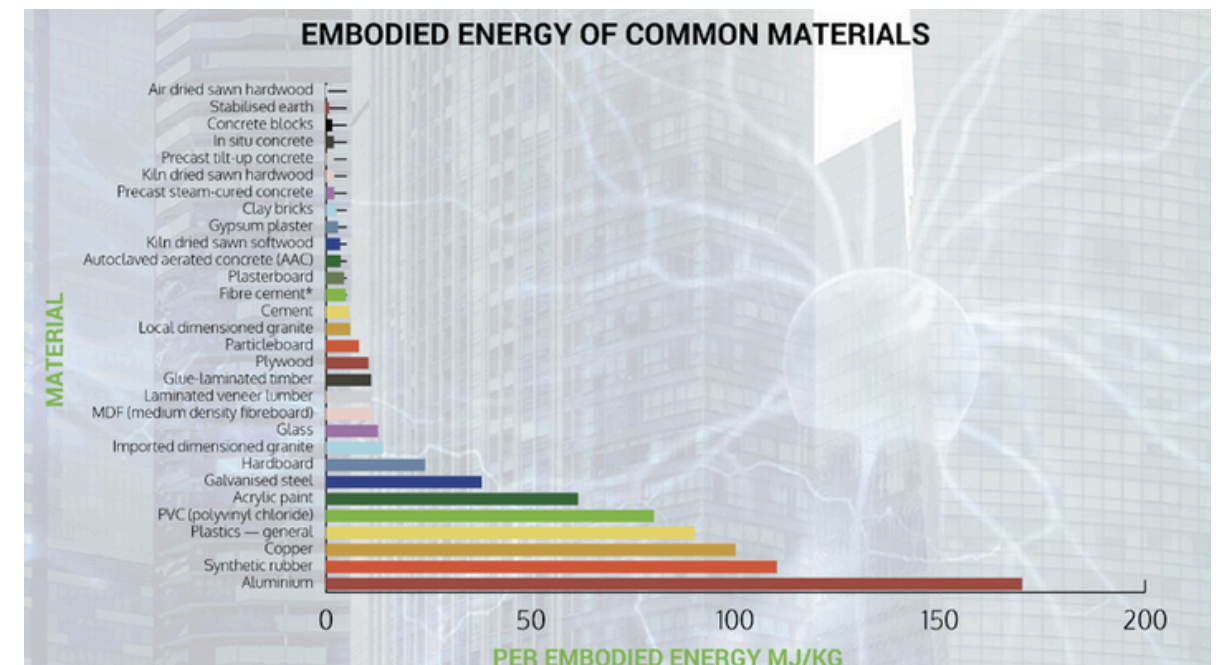
We are committed to a high standard of environmental responsibility across our operation. From re-conditioning components, recycling waste including – steel, copper, cardboard, batteries right down to the filtering and recycling of water we use at our depot

Circular Economy SLR Reducing Embodied Energy.

High quality products through globally recognised brands we aim for a long life cycle for components. At the end of their usable life, where possible luminaires are renewed with a new wiring harness, control gear, and LED boards. They are then tested and put back into service. This process significantly reduces manufacturing's embodied energy.



Include a photo of three light fittings that show the Colour Temperature Optics changed.



100 % solar



awaiting photo from Owen

Chapter 03

TELESCOPIC & TRAILER MOUNTED UNITS



Testimonial-

“XXXXXX”

-Role, Region/ Company Type..

Key Benefits

- Wind rated upto 100km/hr
- Quick to deploy easily transportable
- Low labour input
- Convenience, Speed and Minimal Labour or Machinery
- Lock mast at any desired height
- Quick to set up (often by a single, person)
- Extra Low Voltage
- Minimal machinery - either manitou/ forklift/ crane truck or site crane.

Mobility: Easy to reposition as work progresses across a site

Flexibility: Ideal for short-term or medium-term needs for projects varying from 1 – 6 months

Application Guide

Small – Medium Telescopic Models Great for short-medium term application, quick to deploy and easy to move on site, best suited in the following applications –

- P-Category,
- Small Intersections
- Pedestrian and Pedestrian Crossing (Ped-X)
- Pathways,
- Small Carparks

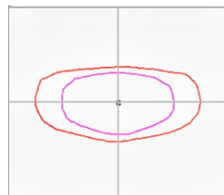
Medium – Large Telescopic Models Great for short-medium term application, quick to deploy and easy to move on site best suited in the following applications –

- V- Category
- Large Intersections
- Pedestrian Crossing (Ped-X)
- Roundabouts
- Large Carparks

Small-Medium Block Mounted Telescopic

MODEL	JSS-4H-20	JSS-6T	JSS-8T
Mounting Height (m)	4m	4m to 6m	4m – 8m
Luminaire Outreach (m)	0.5m	0.5m	0.5m
Luminaire Optic	Type 2	Type 2	Type 2
Solar Input (W)	200w	390w	390w
Battery Chemistry	Lead A or Lithium	Lead A or Lithium	Lead A or Lithium
Autonomy @ 100%	13 hrs	4 – 8 Days	4 – 8 Days
Pole Spacing (m)	20m – 35m	25m – 35m	30m – 60m
Concrete Block Weight (T)	750kg	1.1T – 2.5T	2.5T
Transport Height	1.68m	2.7m – 3.2m	2.9m
Rated Wind Design	100 km/hr	100 km/hr	100 km/hr
Luminaire Output (w)	20w	15-60w	15 – 60w
Luminaire Output (Lm)			

Type 2 - Road Optic, Merges, Intersection
Street Optic



WWW.SITELIGHTRENTALS.COM.AU

P-Category Lighting – Civil Subdivision to AS/NZ 1158



Illuminating End treatment on the Bruce Highway to AS/NZ 1158

Medium-Large Block Mounted Telescopic

MODEL	JSS-8T-100	Barracuda	Hammer Head
Mounting Height (m)	4m – 8m	6m to 9m	6m – 12m
Luminaire Outreach (m)	0.5m	2.5m	3.0m
Solar Input (W)	800w	800w	830w
Battery Chemistry	Lead A or Lithium	Lead A or Lithium	Lithium
Autonomy @ 100%	4 – 8 Days	4 – 8 Days	4 – 8 Days
Pole Spacing	30m – 60m	36m – 60m	64m – 70m
Overall Weight (T)	3.0T	3.0T	3.0T
Transport Height	2.9m	2.95m	2.95m
Rated Wind Design	100 km/hr	100 km/hr	100 km/hr
Luminaire Output (w)	50 – 100w	60w – 150w	60w – 150w
Luminaire Output (Lm)			

Luminaire Optics *

Type 2 - Road Optic, Merges, Intersection

Street Optic



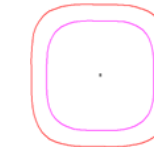
Type 4 - Forward Optic, Intersection, Carpark, Large Roadway

Forward Throw



Type 5 – Round Optic, Roundabout, Carpark, Intersection

Carpark / Roundabout



*Type 2, Type 4, Type 5



WWW.SITELIGHTRENTALS.COM.AU

Illuminating End treatment and V3 Category Roadway on the Smith St Motorway to AS/NZ 1158



Arrives fully assembled ready to commission



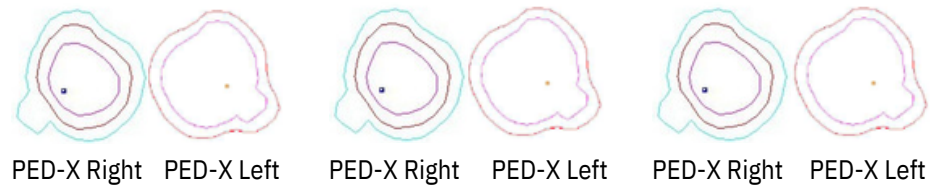
Crane truck delivered option

Block Mounted Telescopic Units

Pedestrian Crossing

MODEL	JSS-6T-PEDX	Barracuda – PEDX	Hammer Head -PEDX
Mounting Height (m)	6m	6m to 9m	6m – 12m
Luminaire Outreach (m)	0.5m	2.5m	3.0m
Solar Input (W)	200w	800w	830w
Battery Chemistry Autonomy @ 100%	Lead A or Lithium 4-8 Days	Lead A or Lithium 4 – 8 Days	Lithium 4 – 8 Days
Crossing Width + Length (m)	20m – 30m	25m – 35m	30m – 45m
Overall Weight (T)	800kg	3.0T	3.0T
Transport Height	2.7m – 3.2m	2.95m	2.95m
Rated Wind Design	100 km/hr	100 km/hr	100 km/hr
Luminaire Output (w)	20w – 60w	60w – 150w	60w – 150w
Luminaire Output (Lm)			

Luminaire Optic



Block Mounted Flood Lights

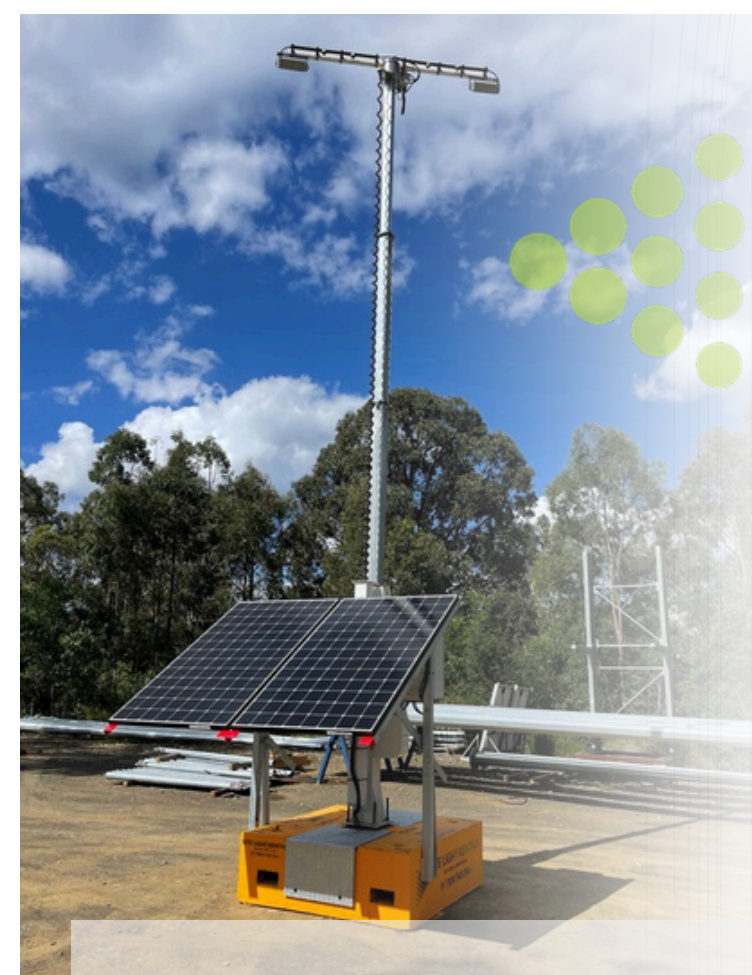
MODEL	JSF-8T-150	JSF-8T-300	JSF-10- 600
Mounting Height (m) Luminaire	8m N/A	6m to 9m	6m – 12m
Outreach (m) Solar Input (W)	800w	800w	830w
Battery Chemistry Autonomy @ 100%	Lead A 4 Nights or Lithium upto 8 Nights	Lithium 4 – 8 Days	Lithium 4 – 8 Days
Overall Weight (T)	800kg	3.0T	3.0T
Transport Height Rated Wind Design	2.7m – 3.2m	2.95m	2.95m
Luminaire Output (w) Dimable	150w	300w	600w



WWW.SITELIGHTRENTALS.COM.AU



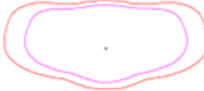



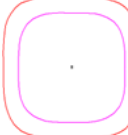
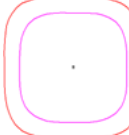
Ped-X-Category Lighting – with Ped-X Optics
Optimised mounting height and Outreach (AS/NZ 1158)



WWW.SITELIGHTRENTALS.COM.AU
Ped-X-Category Lighting – with Ped-X Optics
Optimised mounting height and Outreach (AS/NZ 1158)

Trailer Mounted

Telescopic and Trailer Mounted Units

MODEL	JS-300	JS-400	
Mounting Height (m)	8m	8m	
Luminaire Outreach (m)	0.5m	0.5m	
Solar Input (W)	900w	900w	
Battery Chemistry	Lead A or Lithium	Lead A or Lithium	
Autonomy @ 100%	4 – 8 Days	4 – 8 Days	
Weight	1,300kg	1,300kg	
Transport Height	2.95m	2.95m	
Rated Wind Design	100 km/hr	100 km/hr	
Luminaire Output (w)	60w – 100w	60w – 100w	
Luminaire Output (Lm)			
Luminaire Optics *			
Type 2 - Road Optic, Merges, Intersection	Street Optic		
Type 4 - Forward Optic, Intersection, Carpark, Large Roadway	Forward Throw		
Type 5 - Round Optic, Roundabout, Carpark, Intersection	Carpark / Roundabout		

Medium to Large Trailer Mounted Units -

Comin Soon!!!!



Fixed Pole

Chapter 04

FIXED POLE



Key Benefits

- Convenience, Speed with Minimal Labour or Machinery
- 24v Extra Low Voltage - designed for safe, simple, Plug and Play. Eliminating 240v power, Cable theft, expensive electricians to assemble and maintain
- No EWP or Working at Heights
- Modular Efficient site assembly process at ground level
- Integrated block-mounted power supply, minimise theft, increase efficiency

Quick to deploy, low maintenance costs, easy to set up

Mobility: Easy to reposition as work progresses across a site

Flexibility: Ideal for short-term or medium-term needs for projects varying from 3 + months

Application Guide

Single Outreach Models are great for Medium- Long term application, quick to deploy and easy to move on site.

From 9.5m -14.5m mounting height best suited in the following applications –

- Minor and Major Roadways,
- V1, V3 and V5 Roadways
- Multi-lane highways
- Intersections
- Pedestrian Crossing (Ped-X)
- P Category
- Carparks
- Roundabouts

Dual Outreach Models are great for medium-long term application, quick to deploy and easy to move on site.

From 10.5m – 12,5m mounting height, best suited in the following applications –

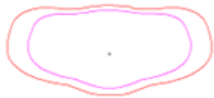
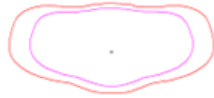
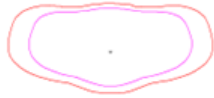






- Minor and Major Roadways including multi-lane highways
- V1, V3 and V5 Roadways
- Intersections
- Pathways
- P Category
- Carparks
- Roundabouts

Testimonial-






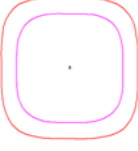
“XXXXXX”

-Role, Region/ Company Type..

Block Mounted Fixed Pole Solar Street Lights - Single Outreach

MODEL	JSS-10	JSS-12	JSS-14
Mounting Height (m)	10.5m – 11.0m	12.5m – 13m	14.5m
Luminaire Outreach (m)	4.0m – 4.5m	4.0m – 4.5m	4.0m
Luminaire Output (w)	60w – 150w	100w – 150w	150w – 266w
Solar Input (W)	800w	800w	1,600w
Battery Chemistry	Lead A or Lithium	Lithium	Lithium
Autonomy @ 100%	4 – 8 Days	4 – 8 Days	5 -7 Days
Pole Spacing	55m - 64m	56m - 70m	70m - 84m
Pole Weight	285kg – 450kg	285kg – 450kg	285kg – 450kg
Concrete Block Weight (T)	5.5T – 5.7T	5.5T – 5.7T	6.0T
Concrete Block Tpt Height			
Rated Wind Design	Region C T2 (Cyclonic)	Region C T2 (Cyclonic)	Region B T2 (Non-Cyclonic)
Luminaire Output (Lm)			
Luminaire Optics *			
Type 2 - Road Optic, Merges, Intersection			
Type 4 - Forward Optic, Intersection, Carpark, Large Roadway			
Type 5 - Round Optic, Roundabout, Carpark, Intersection			

Block Mounted Fixed Pole Solar Street Lights - Dual Outreach

MODEL	JSS-10 (Dual Outreach)	JSS-12 (Dual Outreach)
Mounting Height (m)	10.5m – 11.0m	12.5m – 13m
Luminaire Outreach (m)	4.0m – 4.5m	4.0m – 4.5m
Luminaire Output (w)	60w – 150w	100w – 150w
Solar Input (W)	800w	800w
Battery Chemistry	Lead A or Lithium	Lithium
Autonomy @ 100%	4 – 8 Days	4 – 8 Days
Pole Spacing	55m-63m	56m-70m
Pole Weight	285kg – 450kg	285kg – 450kg
Concrete Block Weight (T)	5.5T – 5.7T	5.5T – 5.7T
Concrete Block Tpt Height		
Rated Wind Design	Region B T2 (Non-Cyclonic)	Region B T2 (Non-Cyclonic)
Luminaire Output (Lm)		
Luminaire Optics *		
Type 2 - Road Optic, Merges, Intersection	Street Optic 	
Type 4 - Forward Optic, Intersection, Carpark, Large Roadway	Forward Throw 	
Type 5 - Round Optic, Roundabout, Carpark, Intersection	Carpark / Roundabout 	



Chapter 05

JONKER LIGHT



Overview

Ideal for massive-scale projects requiring extreme height and power. Engineered for heavy mining environments where total site illumination is required.

Key Benefits

- Ultra-Class lighting – Worlds Largest Mobile Light Towers – 18m – 24m High.
- Quick to deploy, low operational costs, low maintenance costs, easy to set up
- Mobility: Drive with 100% Wireless Remote Control
- Extreme light output from a high mounting point
- Compliant lighting for roadways - Large intersections/ roundabouts/ motorways
- 48v Extra Low Voltage
- Low impact diesel genset with a fuel burn rate of 1.8lt- 2.3 Litres Per Hour
- Illuminating large work areas or
- Illuminating events/ constructions sites where specific high level lighting levels must be met

Mobility: Wireless Remote Control makes it easy to reposition as work progresses across a site

Application Guide

Jonker Lights are great for Medium- Long term application, quick to deploy and easy to move on site. Floodlight output of 4,000w – 5,600w (600,000 lm – 896,000lm) using a combination of optics to specifically maximise results. Or

Best suited applications –

- Open Pit Mining
- ROM Pads
- CHPP (Coal Handling Prep Plants)
- Coal Stock Piles
- Sporting Events

With a specific street lighting package of 900w (139,000lm) using a combination of Type 2 and Type 4 optics

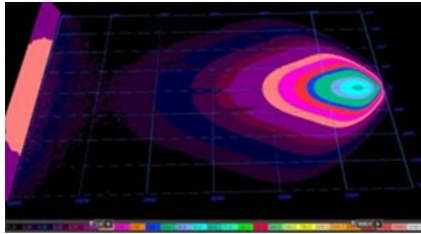
- Major Roadways
- Multi-lane highways
- Intersections
- Roundabouts

Jonker Light

Wireless Remote Mobile Stadium Light

Flood Light - Performance

- Uniformly Distributed Light over work area = NO Hotspots
(Major compliance requirement for Australian road lighting standards)
we aim to carry through to other product designs)
- 2 Lux on Vertical Wall Surface at 600 Metres
(note - boxes within grid pattern)
- 7.5 Lux on Vertical Box Surface at 320 Metres
- 0.75 Lux on GROUND Surface at 425 Metres
- Max 50 LUX on the GROUND Surface under Light Tower



Testimonial-

“This is the best light for our application, nothing else compares to the performance, the light output, the manoeuvrability. A significant benefit is the height, being able to position the light well above the operators eyes. The wireless remote system eliminates the expensive Dozer, Grader or wheel loader to move it around unlike other skid-type design units. Nothing compares to a Jonker Light”

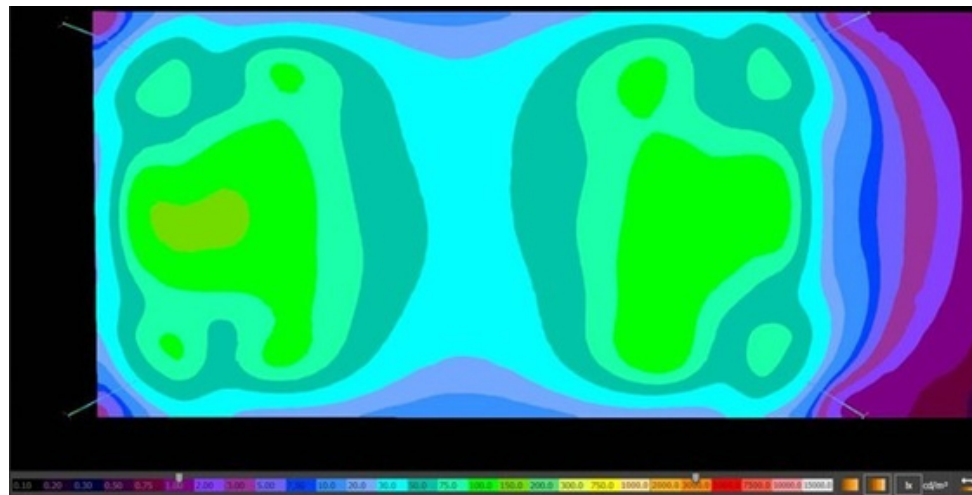
-CHPP Superintendent, Bowen Basin.

Tower Quantities -

- 4 x JLED-4200 Lights
(18m High, 4,200w LED)

Description -

48 x 350W LED Flood Lights
25 Degree Lenses (Pencil Beam)



Overall Pad Size – 250m x 100m

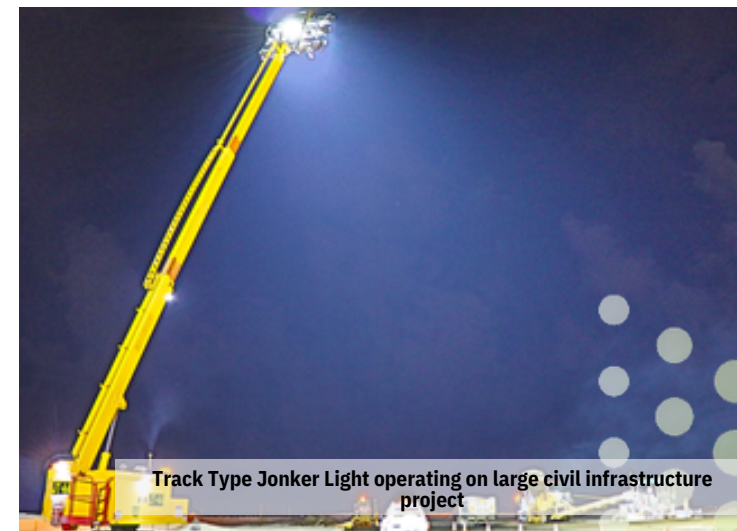
Distance between each corner light – 162m x 81m
4 x Light Tower Positioned in each corner

WWW.SITELIGHTRENTALS.COM.AU

1300 748 354 | 0412 677 817

Jonker Light/ Mobile Stadium Light

MODEL	JLED-18-4200	JLED-18-4200T	JLED24-5600
Mounting Height (m)	18m	18m	24m
Drive Type	Hydrostatic 4 x 4	Track Mounted	Hydrostatic 4 x 4
Autonomy @ 100%	300 hours	300 hours	300 hours
Weight	13,000kg	15,000kg	18,000kg
Transport Height	3.0m	3.0m	3.0m
Transport Length	11m	11m	12m
Rated Wind Design	44km/hr	44km/hr	44km/hr
Luminaire Output (w)	4,200w	4,200w	5,600w
Luminaire Output (Lm)	693,000Lm	693,000Lm	924,000Lm
Luminaire Optics *	Combination of 25 and 40 Degree Beam Angle	Combination of 25 and 40 Degree Beam Angle	Combination of 25 and 40 Degree Beam Angle
Generator Set			
Electrical System	48V DC	48v DC	48v DC
Alternator	AVR and PMG	AVR and PMG	AVR and PMG
Fuel Consumption	1.8L/hr	1.8L/hr	2.3L/hr



Track Type Jonker Light operating on large civil infrastructure project



Jonker Light - ROM Pad and Coal Stock Pile Operations



Jonker Light Operating in Large Open Cut Mining

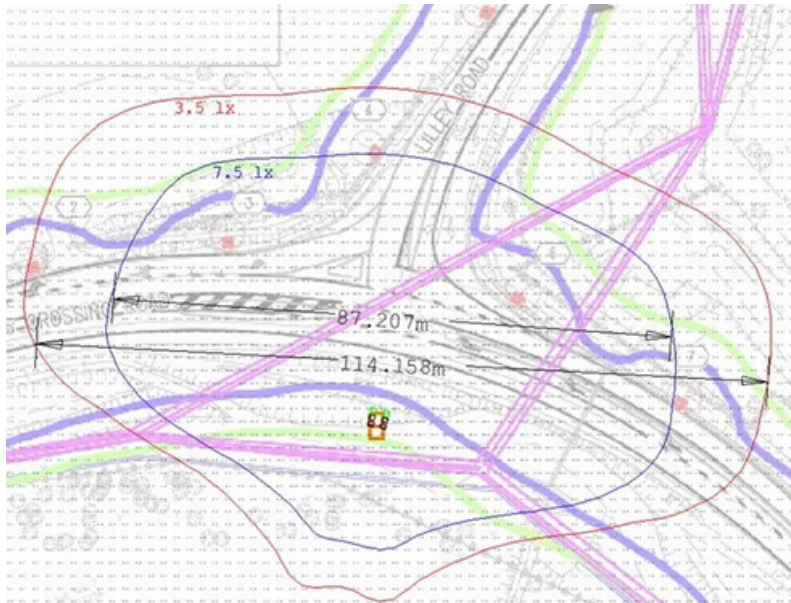


WWW.SITELIGHTRENTALS.COM.AU

Jonker Light - High Mast Street Light



Description -
 Intersection Design using 4 x Jonker Lights, 139,000 Lumens Per Light Tower at 18m mounting height



Description -
 Intersection Design using 1 x Jonker Lights, 139,000 Lumens at 18m mounting height



Description -
 -Total of 6 x Luminaires = 139,000 Lumens
 -4 x Type 2 Optics – 150w Luminaires
 -2 x Type 4 Optics – 150w Luminaire

Jonker Light – High Mast Street Light

MODEL	JLED-18-4200	JLED-18-4200T	JLED24-5600
Mounting Height (m)	18m	18m	24m
Drive Type	Hydrostatic 4 x 4	Track Mounted	Hydrostatic 4 x 4
Autonomy @ 100%	300 hours	300 hours	300 hours
Weight	13,000kg	15,000kg	18,000kg
Transport Height	3.0m	3.0m	3.0m
Transport Length	11m	11m	12m
Rated Wind Design	44km/hr	44km/hr	44km/hr
Luminaire Output (w)	900w	900w	900w
Luminaire Output (Lm)	139,000Lm	139,000Lm	139,000Lm
Luminaire Optics *	Combination of T2 and T4	Combination of T2 and T4	Combination of T2 and T4
Generator Set			
Electrical System	48V DC	48v DC	48v DC
Alternator	AVR and PMG	AVR and PMG	AVR and PMG
Fuel Consumption	1.8L/hr	1.8L/hr	2.3L/hr



Chapter 06

MISCELLANEOUS PRODUCT



Testimonial-

“XXXXXX”

-Role, Region/ Company Type..

Overview

Beyond illumination, our versatile block-mounted systems serve as a modular foundation for total site intelligence. By integrating advanced signaling, data collection, and surveillance technology, we provide a rapid-deployment solution that enhances safety and security without the need for fixed infrastructure or grid power.

Application Guide

Unit Type	Best Suited Application	Key Features	Benefits
Signal Block	Intersection Traffic signals 2 Options – Overhead power feed or base of pole	Wind rated to 100km/hr	Rapid Deployment, no bolting or damage to pavement/ roadway
Radar System	Data-Driven Safety Monitoring	Integrated real-time speed analytics and traffic density data. (supplied by others)	Traffic monitoring, integration with Signalised intersections.
CCTV	24/7 Site Visibility	100% solar autonomy – 7 Day battery redundancy with high-definition remote viewing, (supplied by others)	Remote Asset & Equipment Surveillance, 24/7 Site Security, Project Milestone Time-Lapse, and Remote Safety Compliance Monitoring.

Signals Blocks/ Radar/ Camera CCTV

Solar Assy with Radar System

TMR and QR Compliant Camera System
1, 2 and 3 camera – 7 Day battery autonomy



Signals Blocks
(also available for overhead cable)



Radar for Traffic Signals



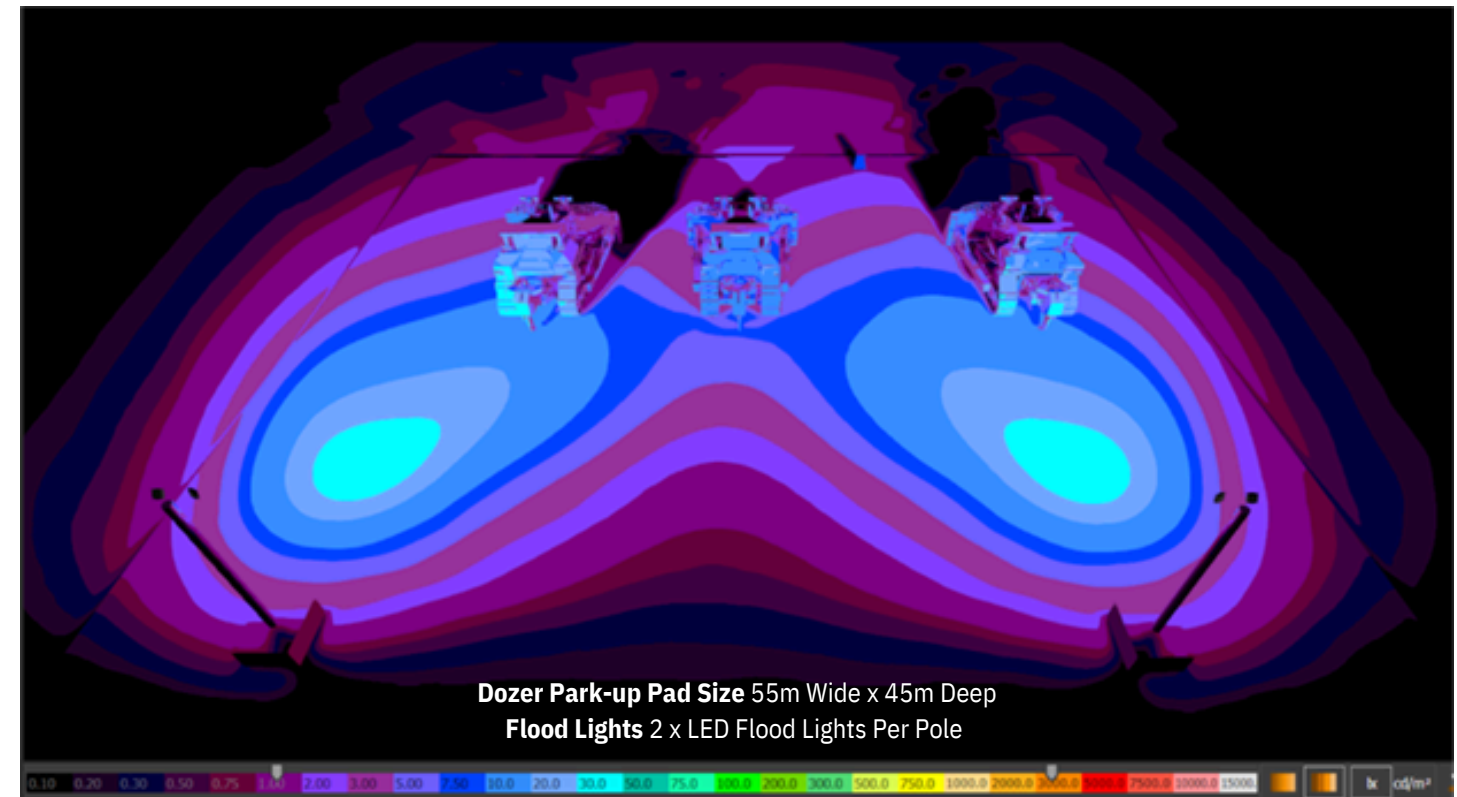
CCTV - 24hr 7 Day Battery Redundancy
(1-3 camera systems)

WWW.SITELIGHTRENTALS.COM.AU

Block Mounted Flood Lights

Description

8M High Telescopic Mast with 2 x 75W LED Flood Lights mounted on 0.5M high concrete block
Block Mounted Solar System



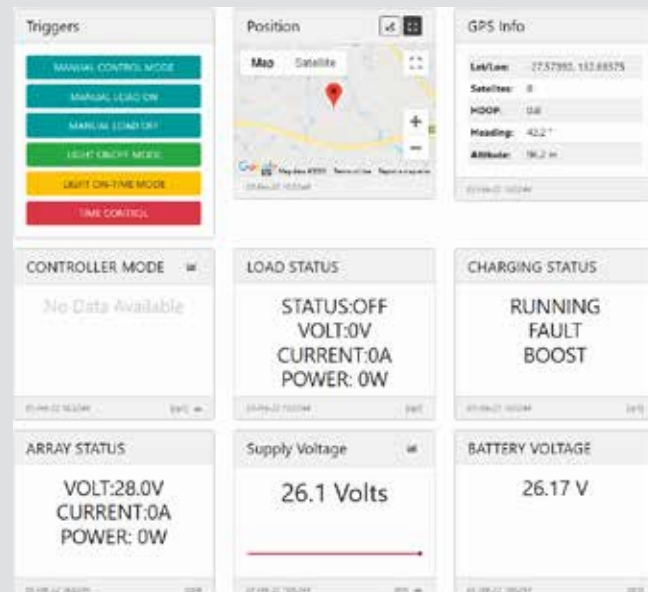
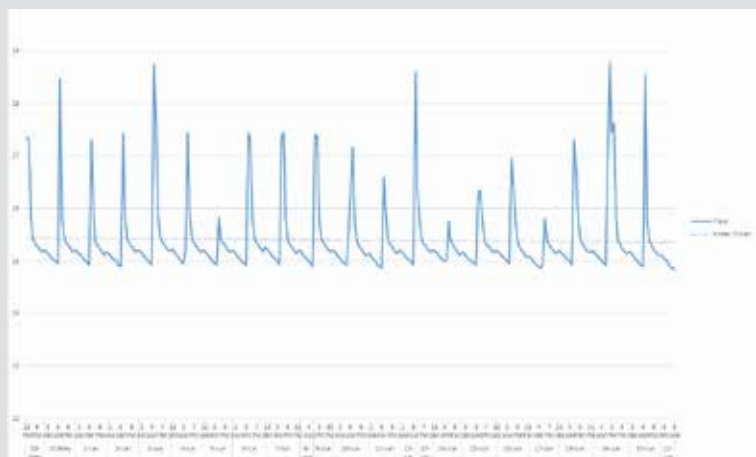
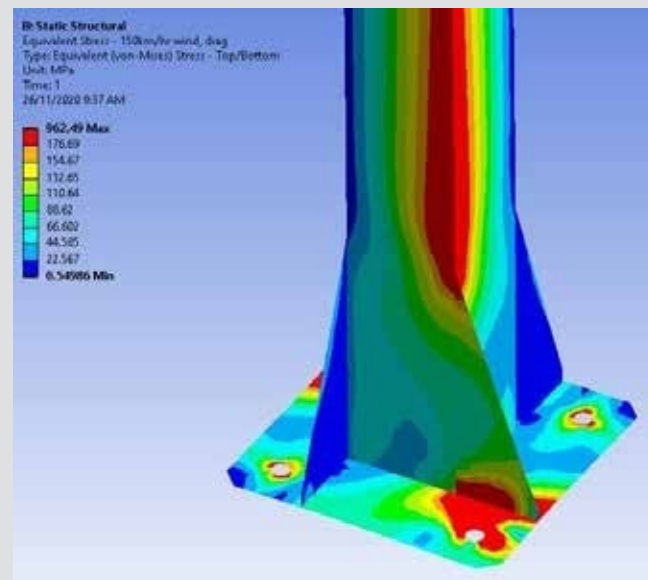
Dozer Park-up Pad Size 55m Wide x 45m Deep
Flood Lights 2 x LED Flood Lights Per Pole



Telescopic and Mid Hinge Available

WWW.SITELIGHTRENTALS.COM.AU

1300 748 354 | 0412 677 817



Our Company Values drive our commitment to continuous innovation and quality solutions -

- See More Achieve More Integrity and Professionalism Partnering and Collaboration
- Innovation and Specialisation Rewarding Value
- Health and Family

Our commitment to developing high-quality products and services that deliver improved safety, production efficiencies and reduced costs for our clients, has driven our product evolutions since 2014.

Through collaboration and partnership with a select group of technical experts and our ongoing drive to understand client challenges across a diverse range of situations, Site Light Rentals has gained a unique understanding of industry requirements which enable us to tailor unique solutions to an ever-evolving landscape of demand.

Our mission to minimize the complexity and cost of temporary lighting compliance, has necessitated our on-going engagement in research, development and in partnering with a diverse range of industry experts in the rapidly evolving fields of lighting, electronics, renewable energy generation and storage, and materials engineering.

SOME OF THE MORE NOTABLE PRODUCTS OF THOSE ENGAGEMENTS INCLUDE :

- The world largest remote control mobile light tower – 24m high and 5,600w LED Light Output
- Diesel Powered Hybrid Light Tower – DC-DC (48v DC Generator to 48v DC Lithium Battery Bank)
- First Hire Company in Australia to remotely manage 24v Solar Street Lighting Systems
- Australia’s first fixed pole mounted Temporary Solar Street Light Compliant to “V3” and “V1” road light compliance
- Australia’s Highest Output Temporary Solar Street Light (100% **to be confirmed** Solar) – upto 14.5m Mounting Height achieving “V3” road light compliance
- Australia Highest Output Temporary Solar Street Light (100% **to be confirmed** Solar) – 12.5m mounting height and upto 300W LED
- Light Output compliant to road lighting standards. AS/NZ 1158.



Chapter 08

TECHNICAL APPLICATION GUIDE

Overview

Delivering on our Vision – “To be the highest value provider of specialised, compliant, low-impact, temporary lighting solutions.” we have significantly invested into the research development and procurement of specific types of Optics and sourced from high quality Luminaire manufacturers. At any one time we will have in-excess of 100 x spare luminaires on the shelf. This gives us the capacity and confidence to supply our products to a variety of projects and applications.

Application Guide

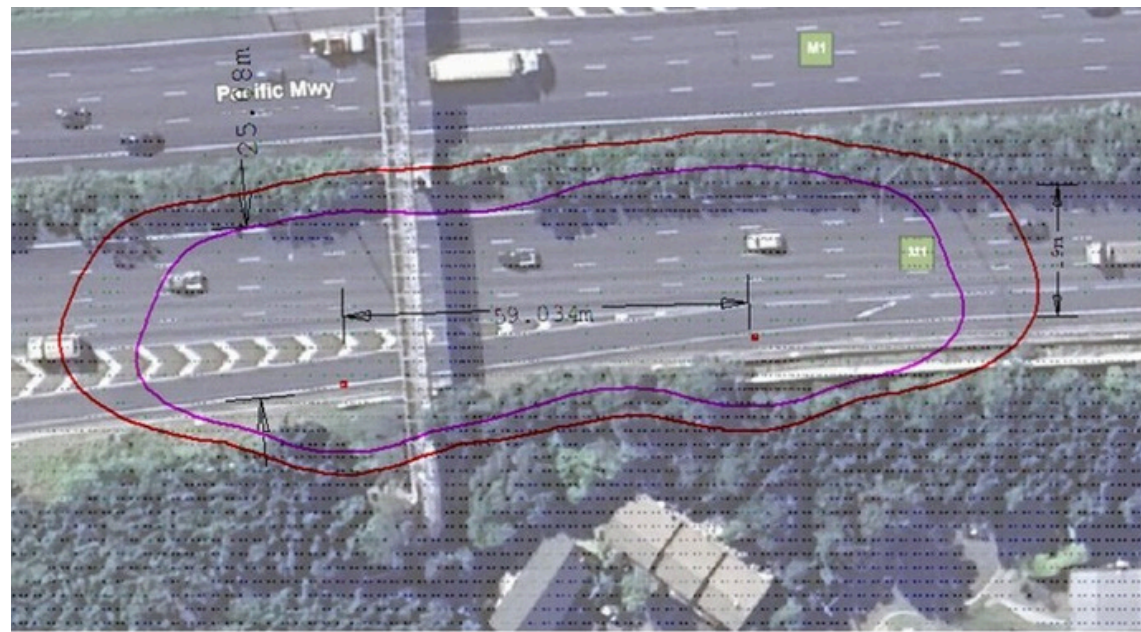
The following pages demonstrate our large variety of compliant lighting products for a number of different applications -

- Roadway and Pedestrian foot paths
- Intersections
- Pedestrian Crossings
- Carparks
- Roundabouts

Road Lighting

Technical Application Guide

Example of a lighting design for Major Highway achieving compliance across whole carriage way



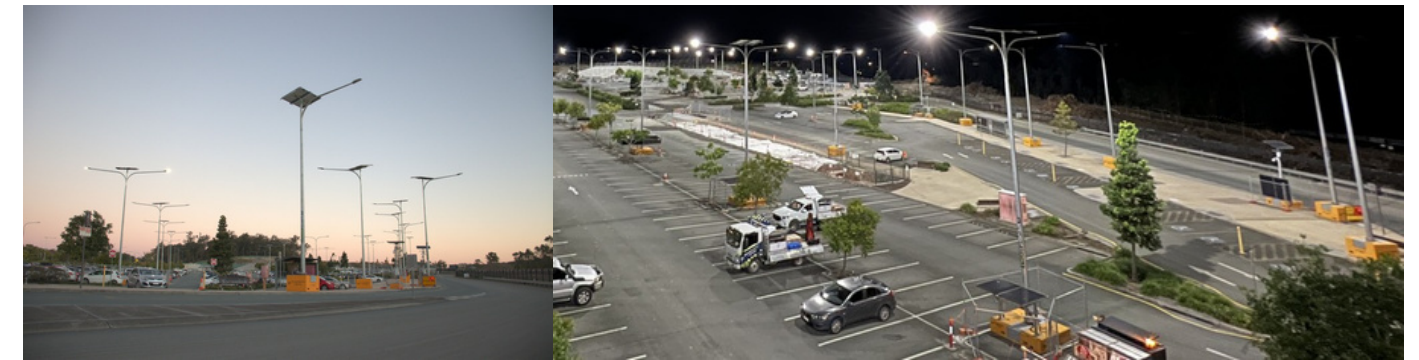
Typical roadway Category V3

SITE LIGHT RENTAL PRODUCT	Mounting Height	Lumen Output	Upcast	Outreach	Carriageway width	Traffic Flow	Max Spacing	Traffic Flow	Max Spacing
JSS-4-266w	14.5 Meters	43,507lm	5°	4m	17m	Two ways	69m	One way	85m+
JSS-4-266w	14.5 Meters	43,507lm	10°	4m	20m	Two ways	63m	One way	85m+

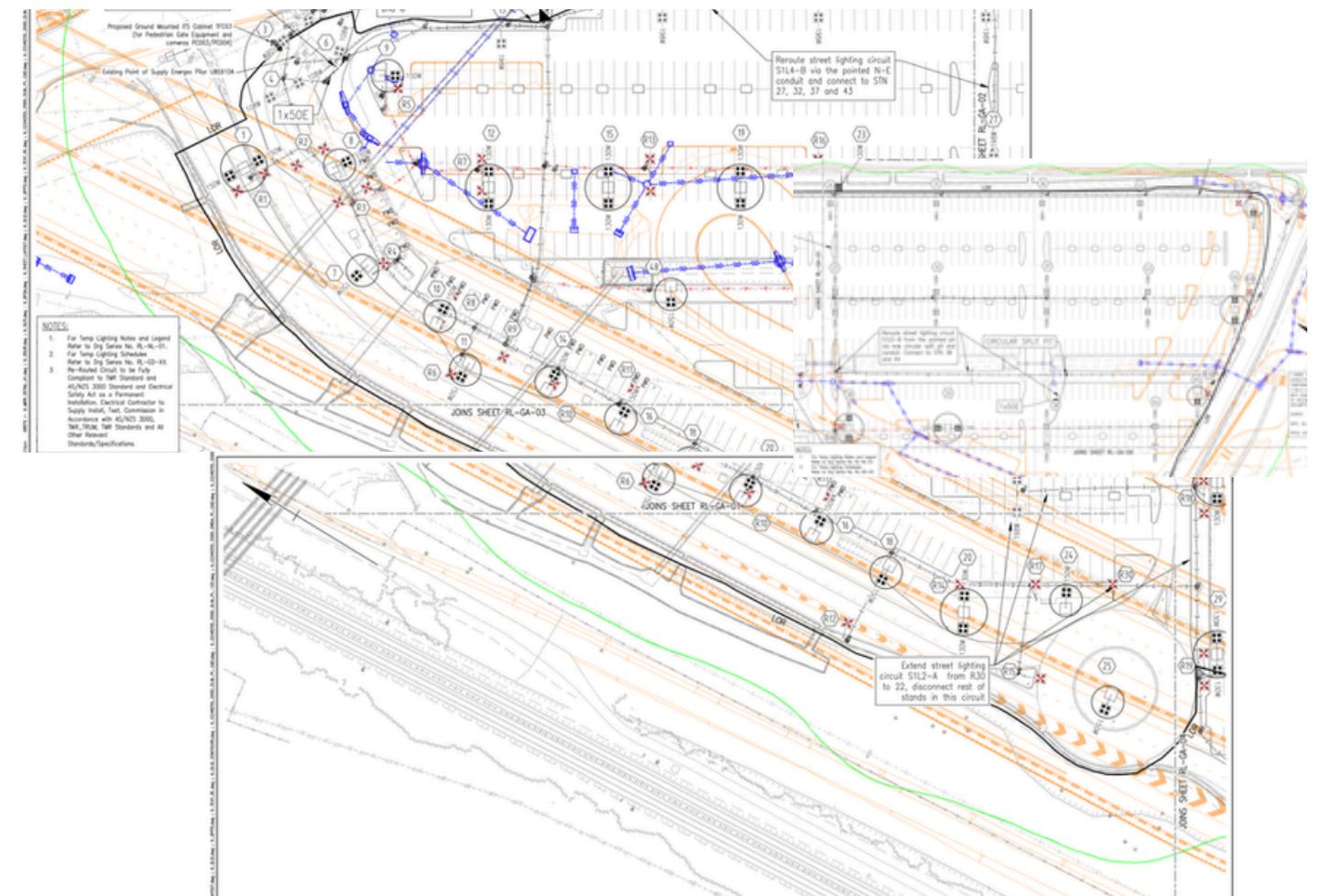


Carpark

Technical Application Guide



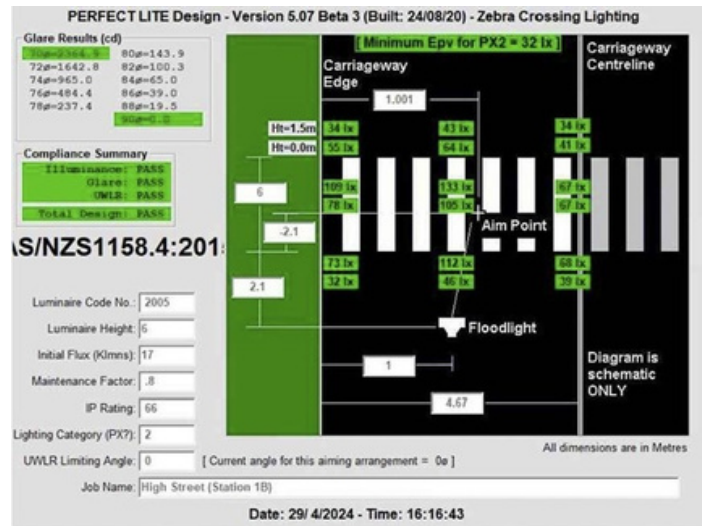
Having access to a variety of Optics, Solar Poles with a variety of mounting heights and the right combination of optics we can provide a solution for compliant carpark lighting. One of the largest carpark projects recently completed had a total area of 20,285m² which was successfully illuminated as per the RPEQ and MIES Design to ASNZ1158.2005



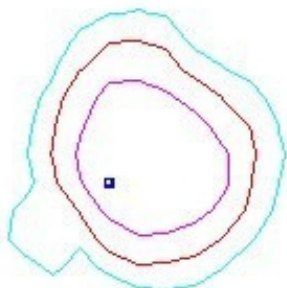
Pedestrian Crossing

Technical Application Guide

We can provide various products to comply with small and very large pedestrian crossings



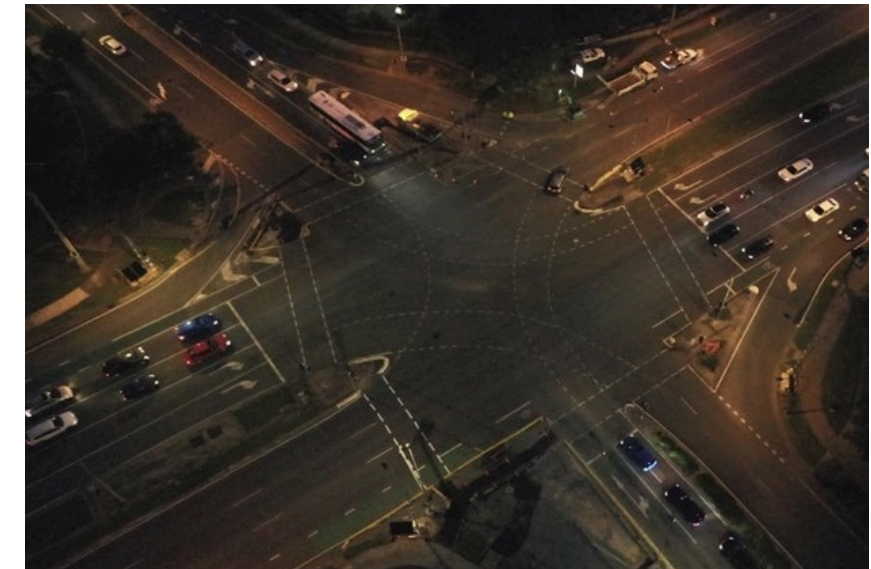
PX2- 6M height
SLT - Eclipse - PEDX - 100w
On 9m/6m Barracuda



Ped-x Right Optic

Intersection

Technical Application Guide



Large Intersection achieved compliant lighting using on 4 x Hammer Head units with 12m Mounting Height and Type 4 Optics

V-Category Lighting - Optimised mounting height, outreach and forward throw (T4) optics to Minimising Pole Quantities

(Intersection to AS/NZ 1158)

WWW.SITELIGHTRENTALS.COM.AU

1300 748 354 | 0412 677 817

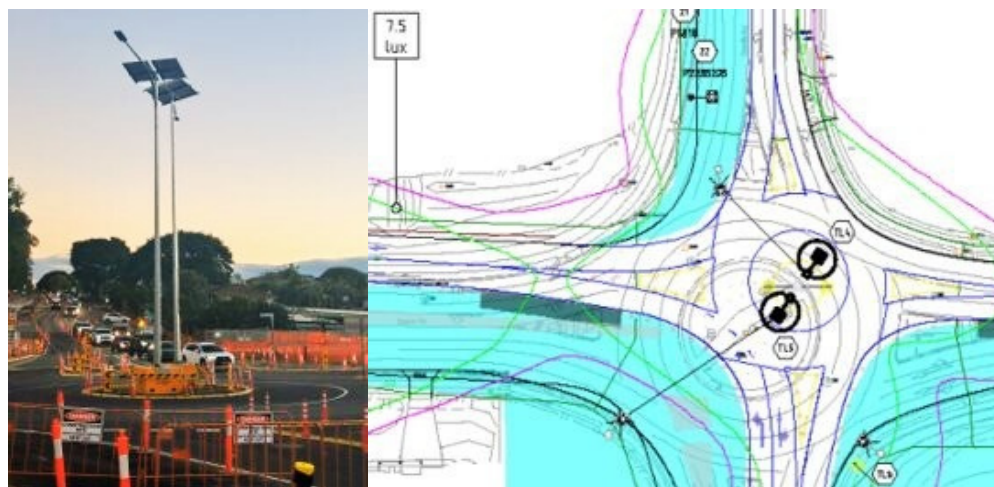
Roundabout

Technical Application Guide

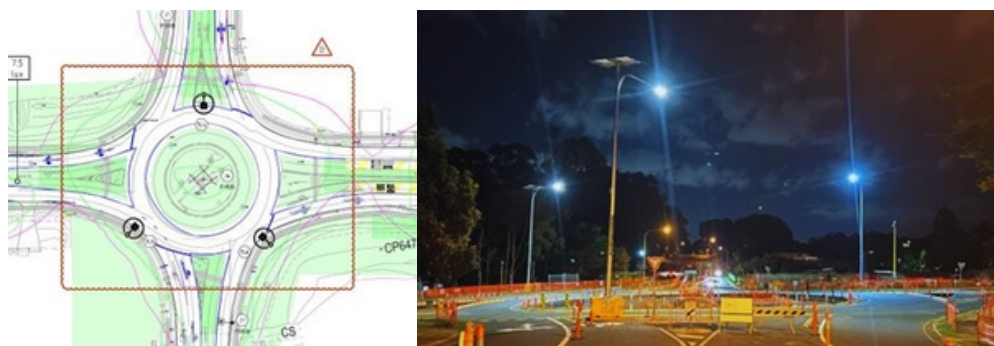
Utilising a combination of optics, mounting heights and outreach assemblies we have been able to achieve compliant lighting on several different size roundabouts, small to very large by either positioning in the centre of the roundabout or around the outsides



Compliant Lighting Achieved from 1 Inside 2 x Outside Location



Compliant Lighting Achieved from 2 Inside Locations



Compliant Lighting Achieved from 3 Outside Locations

WWW.SITELIGHTRENTALS.COM.AU

1300 748 354 | 0412 677 817

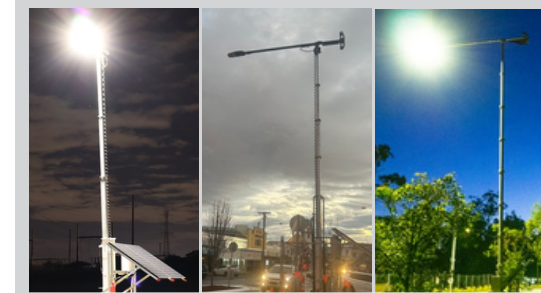
Solar Lighting Solutions: Product Range & Applications

A comprehensive guide to selecting the right unit for your project requirements.

Telescopic & Trailer Mounted Units



Small-Medium Telescopic Models
JSS-4H-20 JSS-6T JSS-8T
For smaller applications such as P-category pathways, small intersections, and small carparks.



Medium-Large Telescopic Models
JSS-8T-100 Barracuda Hammer Head
For V-category roadway lighting, large intersections, roundabouts, and large carparks.



Trailer Mounted Units
JS-300 JS-400
Offer mobility for frequently repositioned projects and short-to-medium-term applications.

Fixed Pole Solar Street Lights

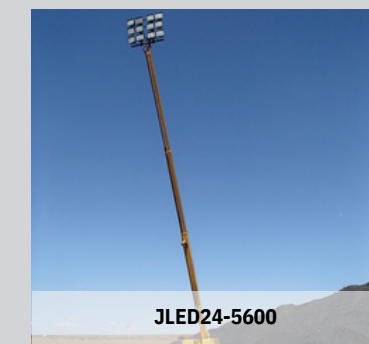


Single Outreach Models
JSS-10 JSS-12 JSS-14
For medium to long-term applications on major and minor roadways, multi-lane highways, and intersections.



Dual Outreach Models
JSS-10 (Dual Outreach) JSS-12 (Dual Outreach)
For illuminating wide areas or dual-lanes; suitable for major roadways, roundabouts, and pathways

Jonker Light (Mobile Stadium Lights)

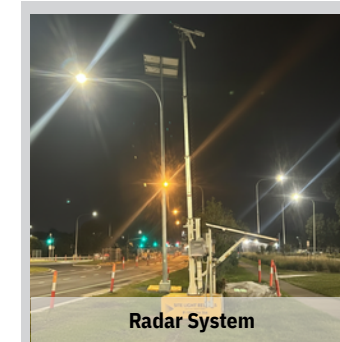


Engineered for massive-scale projects such as open-pit mining, coal stockpiles, and major motorway intersections where extreme height and total site illumination are required.

Miscellaneous Products



Signal Block
Temporary signaling units for traffic management



Radar System
Used to power radar equipment on-site



CCTV
Provides portable power solutions for site surveillance systems



Block Mounted Flood Lights
Heavy-duty floodlighting for specific work areas or construction zones.

Technical Information Example Spacing Tables

Technical Information Example Spacing Tables

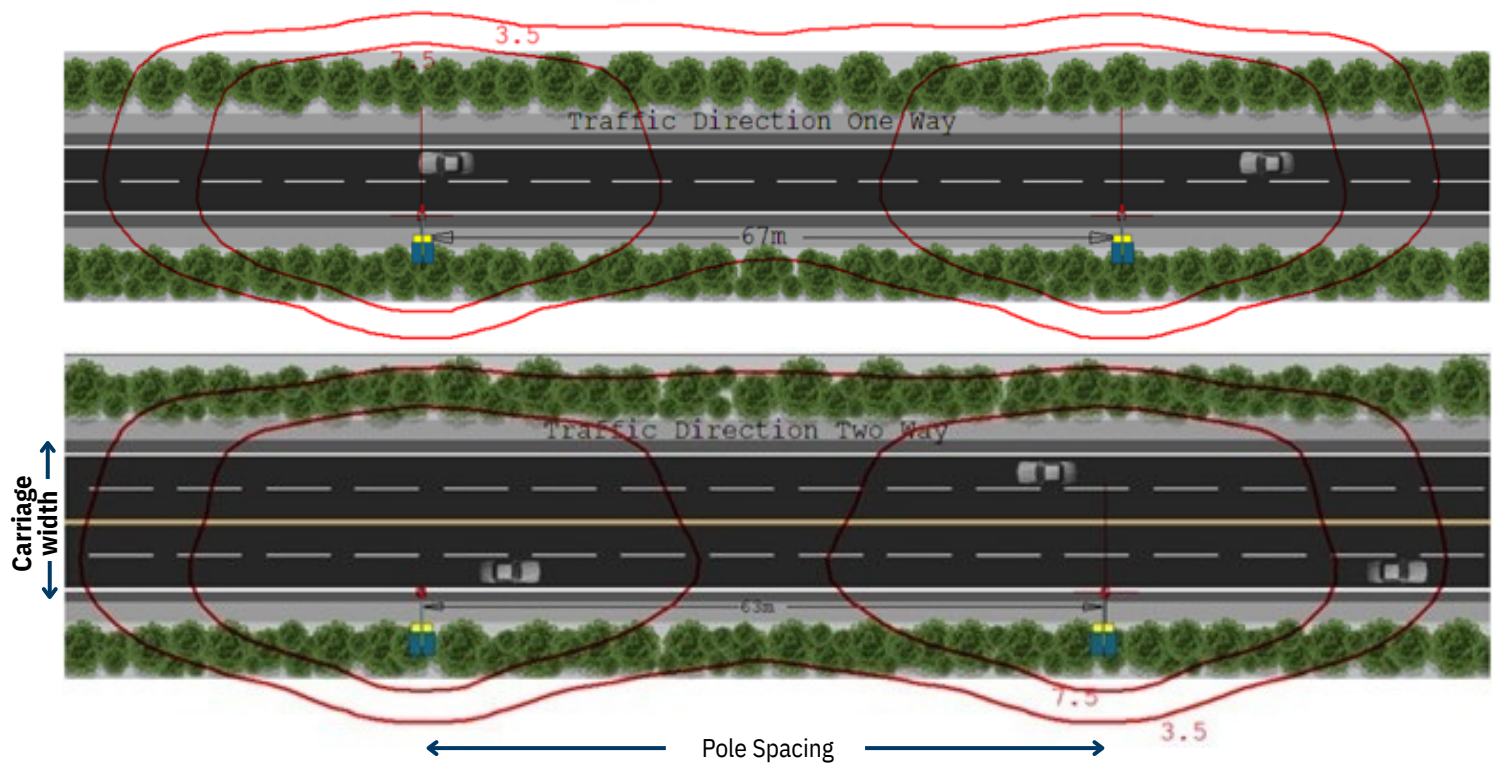
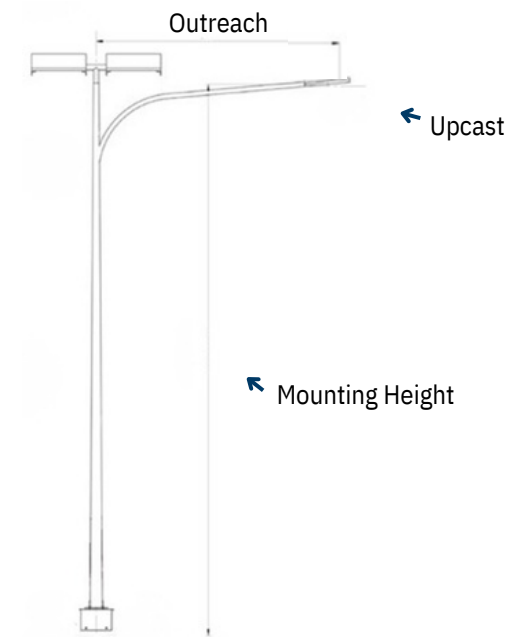
SAMPLE SAASTAN TABLE REPORT	
Luminaire	Site Light Rentals Road Flair
Luminaire Source	LED
Upcast	TBA Degree
Mounting Height	Various
Road Surface	CIE R3
Maintenance Factor	0.8
Traffic Direction	Two Direction
Lighting Category	P, V5, V3, V1

Technical Spacing Tables: Precision Engineering for Site Safety

Spacing Tables provide the data-driven foundation for lighting design, assisting your project in meeting **AS/NZS 1158** compliance specifically for straight roadways. These tables reduce guesswork by providing placement estimates tailored to your specific site geometry.

- Compliance Ready: Engineered to align with both V-Category (Vehicle) and P-Category (Pedestrian) standards.
- Optimized Coverage: Identifies ideal distances between units to help eliminate "black spots" and improve uniform visibility.
- Site-Specific Guidance: Cross-references Carriageway Width and Mounting Height to provide spacing across our fleet.
- Visual Representation: Supported by Isolux Diagrams mapping light distribution, outreach, and upcast for site oversight.

Note: Dimensions and illuminance charts are for illustrative purposes. For final engineering and precise technical details, please contact us directly. Products depicted in one scanio only, and may perform better than illustrative results shown




Technical Information Example Spacing Tables


Technical Information Example Spacing Tables

SAASTAN TABLE REPORT

Luminaire	Site Light Rentals Road Flair
Luminaire Source	LED
Upcast	5 Degree
Mounting Height	Various
Road Surface	CIE R3
Maintenance Factor	0.8
Traffic Direction	Two Direction
Lighting Category	V3

JSS-10 Series	Carriagway Width	3	6	7	8	9	10	11	12	13	14	15	16
		m	m	m	m	m	m	m	m	m	m	m	m
	10.5m Mounting Height Overhang 2m												
	AS/NZ 1158 series 2005	61	60	61	61	61	61	60	60	61	61	62	62
	AS/NZ 1158 series 2020	61	60	61	61	60	56						
	11m Mounting Height Overhang 2m												
	AS/NZ 1158 series 2005	64	63	64	64	64	63	63	63	63	64	64	65
	AS/NZ 1158 series 2020	64	63	64	64	64	63	59	55	55			

JSS-12 Series	Carriagway Width	3	6	7	8	9	10	11	12	13	14	15	16	17	18	19
		m	m	m	m	m	m	m	m	m	m	m	m	m	m	m
	12.5m Mounting Height Overhang 2m															
	AS/NZ 1158 series 2005	72	72	72	73	73	72	72	72	72	70	72	64	67	59	
	AS/NZ 1158 series 2020	72	72	72	73	73	72	72	72	72	72	67	69	61	60	
	13m Mounting Height Overhang 2.5m															
	AS/NZ 1158 series 2005	75	75	75	75	75	76	75	75	75	73	71	68	66	64	62
	AS/NZ 1158 series 2020	75	75	75	75	75	76	75	75	75	73	71	68	66	64	62

JSS-14 Series	Carriagway Width	3	6	7	8	9	10	11	12	13	14	15	16	17	18	19
		m	m	m	m	m	m	m	m	m	m	m	m	m	m	m
	14.5m Mounting Height Overhang 2m															
	AS/NZ 1158 series 2005	80	80	80	80	81	81	80	80	80	80	80	80	81	81	70
	AS/NZ 1158 series 2025	80	80	80	80	81	81	80	80	80	80	80	77	73		

JSS-10 Dual Outreach Series	Carriagway Width	3	6	7	8	9	10	11	12	13	14	15	16
		m	m	m	m	m	m	m	m	m	m	m	m
	10.5m Mounting Height Overhang 2.5m												
	AS/NZ 1158 series 2005	65	62	62	62	63	64	65	64	63	61	59	50
	AS/NZ 1158 series 2020	64	62	62	62	63	63	63	64	63	61	59	50

JSS-12- Dual Outreach Series	Carriagway Width	3	6	7	8	9	10	11	12	13	14	15	16	17	18
		m	m	m	m	m	m	m	m	m	m	m	m	m	m
	12.5m Mounting Height Overhang 2.5m														
	AS/NZ 1158 series 2005	76	74	73	74	74	75	76	77	75	70	69	68	63	57
	AS/NZ 1158 series 2020	76	74	73	74	74	75	76	77	75	70	69	68	63	57

*NOTICE – Dimensions, Graphics and illuminance chart are for guidance and illustrative purposes only and are not for engineering purposes, actual product may differ. Please contact Manufacturer to confirm technical details.

*NOTICE – Dimensions, Graphics and illuminance chart are for guidance and illustrative purposes only and are not for engineering purposes, actual product may differ. Please contact Manufacturer to confirm technical details.

Technical Information Example Spacing Tables

SAASTAN TABLE REPORT

Luminaire	Site Light Rentals Road Flair
Luminaire Source	LED
Upcast	5 Degree
Mounting Height	Various
Road Surface	CIE R3
Maintenance Factor	0.8
Traffic Direction	Two Direction
Lighting Category	V5

* Sample spacing table only, our fixed poles - Barracuda and Hammer Head Series single outreach and dual outreach can also be used in the V5 Category

JSS-8T-100 Series	Carriagway Width	3 m	6 m	7 m	8 m	9 m	10 m
		8m Mounting Height Overhang 0m					
	AS/NZ 1158 series 2005	40 m	40 m	40 m	40 m	40 m	40 m
	AS/NZ 1158 series 2020	40 m	40 m	40 m	40 m	39 m	38 m

Barracuda Series	Carriagway Width	3 m	6 m	7 m	8 m	9 m	10 m	11 m	12 m
		9m Mounting Height Overhang 0m							
	AS/NZ 1158 series 2005	44 m	45 m	45 m	45 m	45 m	45 m	45 m	46 m
	AS/NZ 1158 series 2020	44 m	45 m	45 m	45 m	45 m	45 m	45 m	45 m

Hammer Head Series	Carriagway Width	3 m	6 m	7 m	8 m	9 m	10 m	11 m	12 m
		12m Mounting Height Overhang 2m							
	AS/NZ 1158 series AS/NZ 1158 series 2005	69 m	69 m	69 m	69 m	70 m	70 m	70 m	70 m
	AS/NZ 1158 series 2020	69 m	69 m	69 m	69 m	70 m	70 m	69 m	66 m

to get the numbers for 12.5 m – V5 – 5 Degree – 150W?

*NOTICE – Dimensions, Graphics and illuminance chart are for guidance and illustrative purposes only and are not for engineering purposes, actual product may differ. Please contact Manufacturer to confirm technical details.


Technical Information Example Spacing Tables

SAASTAN TABLE REPORT

Luminaire	Site Light Rentals Road Flair
Luminaire Source	LED
Upcast	5 Degree
Mounting Height	Various
Road Surface	CIE R3
Maintenance Factor	0.8
Traffic Direction	Two Direction
Lighting Category	P

* Sample spacing table only, our fixed poles, JSS-6T-60 and JSS-8T-60 can also be used in the P Category

JSS-6T Series	Carriagway Width	6 m	8 m	10 m	12 m	14 m	16 m	18 m
		6m Mounting Height Overhang 0m						
	AS/NZ 1158 series 2005	32m Traffic in one direction						
	AS/NZ 1158 series 2020	59.6 m	59.6 m	59.6 m	59.6 m	59.6 m	45.0 m	11.4 m

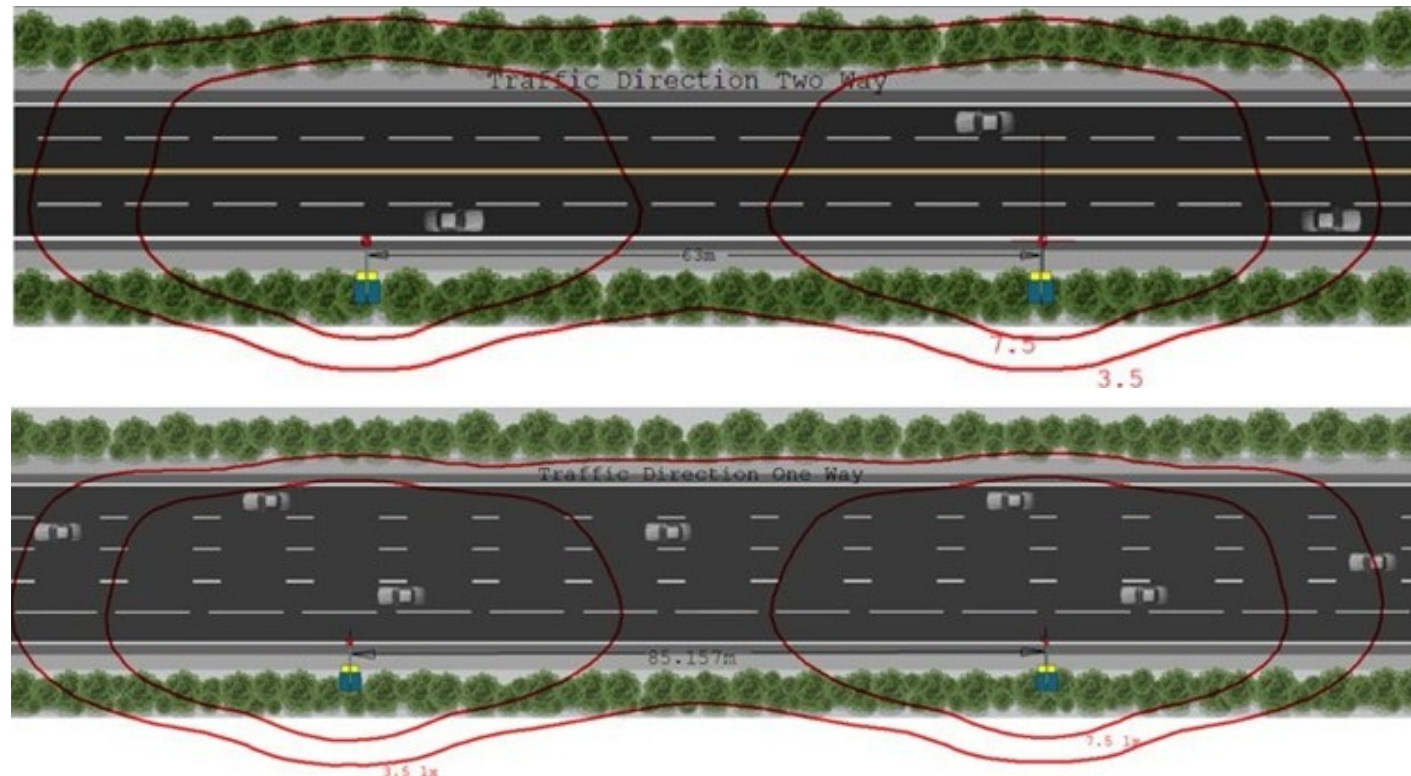
JSS-8T Series	Carriagway Width	6 m	8 m	10 m	12 m	14 m	16 m	18 m	20 m	22 m	24 m
		8m Mounting Height Overhang 0m									
	AS/NZ 1158 series 2005	44m	0	0	0						
	AS/NZ 1158 series 2020	64.6 m	64.6 m	64.6 m	64.6 m	64.6 m	64.6 m	64.6 m	49.6 m	28.3 m	15.7 m

P Category Spacing Table below these two results

Need confirmation with this one

*NOTICE – Dimensions, Graphics and illuminance chart are for guidance and illustrative purposes only and are not for engineering purposes, actual product may differ. Please contact Manufacturer to confirm technical details.

Technical Information Example Spacing Tables



The not So Dumb Questions!

Q – What is the cost of compliant lighting?

A - *Nothing! Compared to the risks and liabilities of non-compliant*

Q – What is the upside of using temporary solar street lighting?

A – *Modularity – Ease of transport, assembly and relocation
Extra Low Voltage - 24v DC, assembly/ disassembly by skilled labour only
100% stand alone Solar + Battery = Zero Copper theft
No 240v. No Electricians. No Test and Tag
Minimal on-site maintenance, set & forget*

Q – Do your products meet Pedestrian (P Category) and Vehicular (V Category) design requirements?

A – *Yes, we have single category and multi-category compliant lighting*

Q - Why do you have such a large variety of Solar Street Lights?

A – *So that we can minimise the cost of project temporary lighting,*

Q – How do we minimise the cost of project temporary lighting?

A – *By minimising units required by maximising “pole spacing” and optimising light output*

Q – Which is the best product for “P” Category Or “V” Category Lighting?

A – *The lower mounting with lower Luminaire output is generally best suited for “P” Category.*

Q - What wind rating are your products engineered for?

A – *Cyclonic - Single outreach 10m and 12m JSS-Series fixed poles
Region - JSS-14 Series and the JSS-Dual Series
100km/hr - Telescopic units*

Q - How many days do your lights run for without Sun?

A - *Earlier Solar Lights more than 4 Nights
Newer models more than 5 Nights*

Q - Do i need a qualified electrician to assemble your Solar Street Lights?

A – *No licensed electrician required, skilled labour only*

Q - What Maintenance is required on your solar lights?

A – *Our lights are designed to minimise user maintenance and cost, (Unless parked under a bridge/ building/ tree),*

Q – How long does it take to assemble and disassemble or extend and retract your solar street lights?

A - *Fixed Poles,
Single outreach sub-2 hours assemble, 1 hour to disassemble
Dual Outreach, Sub-2.5hrs assemble, 1.5 hour to disassemble
Telescopic Units 10 minutes - 25 minutes*

Q - Do your products need any EWP or Working at Heights requirements?

A - *No, unlike other products, ours have been designed to maximise safety and minimise cost.*

Q – Do we need to have compliant lighting?

A - *AS1158*

Setup Guide



1 Site/ Ground Assessment
Ensure solid level compact ground, clear sky with no shadows and no overhead services



2 Transport to Site
Secure mast/panels and check overhead clearances.



3 Unloading
Crane/Hiab operation.



4 Base Positioning
Pad setup.

Setup Guide



5 Leveling for Stability
Adjust base with outriggers or solid secure timber chocks



6 Orientation of Solar Panel
Ensuring panels face north once assembled



7 Install and level pole
Adjust pole level if necessary



8 Lighting Setup
Hardware installation and luminosity testing.

WWW.SIGHTLIGHTRENTALS.COM.AU

1300 748 354 | 0412 677 817

chris@sitelight.com.au



SEE MORE, ACHIEVE MORE

SITELIGHTRENTALS