

GENERAL PAVING NOTES:

- UNDERCUT ϕ ALL PAVING AREAS SHALL BE TO A DEPTH TO INCLUDE ALL VEGETATION & UNSUITABLE SOILS CONTAINING ROOTS, ETC. CONTRACTOR SHALL ASSUME A MINIMUM OF 12" UNDERCUT FOR BIDDING PURPOSES.
- AGGREGATE (BENEATH PAVING) THICKNESS SHALL BE A MINIMUM OF 4 INCHES OF 610 ROAD BASE OR NO. 57 STONE. THE AGGREGATE SHOULD BE COMPACTED WITH A SMOOTH DRUM ROLLER UNTIL NO DEFLECTION IS OBSERVED.
- ALL PAVING SHALL HAVE A SLIP-RESISTANT BROOM FINISH.

HANDICAP PARKING NOTES:

- CURB RAMP SHALL BE PROVIDED WHEREVER AN ACCESSIBLE ROUTE CROSSES A CURB.
- TRANSITIONS FROM RAMPS TO WALKS, GUTTERS, OR STREETS SHALL BE FLUSH AND FREE OF ABRUPT CHANGES. MAXIMUM SLOPES OF ADJOINING GUTTERS, ROAD SURFACES IMMEDIATELY ADJACENT TO THE CURB RAMP, OR ACCESSIBLE ROUTE SHALL NOT EXCEED 1:20.
- THE MINIMUM WIDTH OF A CURB RAMP SHALL BE 36", EXCLUSIVE OF FLARED SIDES.
- CHANGES IN LEVEL UP TO 1/4" MAY BE VERTICAL AND WITHOUT EDGE TREATMENT. CHANGES IN LEVEL BETWEEN 1/4" AND 1/2" SHALL BE BEVELED WITH A SLOPE NO GREATER THAN 1:2.
- MAXIMUM SLOPE IN NEW CONSTRUCTION NOT TO EXCEED 1:12.
- MAXIMUM RISE FOR ANY RUN SHALL BE 30".
- PARKING SIGNAGE TO HAVE UNOBSTRUCTED VISIBILITY.
- CURB RAMPS SHALL HAVE DETECTABLE WARNING, WHICH SHALL EXTEND THE FULL WIDTH & DEPTH OF THE CURB RAMP. DETECTABLE WARNING SHALL CONSIST OF TRUNCATED DOMES.

CONCRETE NOTES:

- ALL CONCRETE AND CONSTRUCTION SHALL BE IN ACCORDANCE WITH ACI 318 - BUILDING CODE REQUIREMENTS FOR REINFORCED CONCRETE.
- ALL FOUNDATION AND STRUCTURAL CONCRETE SHALL HAVE A MINIMUM COMPRESSIVE STRENGTH OF 4,000 PSI AT 28 DAYS UNLESS OTHERWISE NOTED.
- CONCRETE SLUMP SHALL NOT BE MORE THAN 5 INCHES.
- ALL WIRE MESH REINFORCEMENTS SHALL CONFORM TO ASTM A185.
- REINFORCING STEEL SHALL BE DEFORMED BARS CONFORMING TO THE REQUIREMENTS OF ASTM A615, GRADE 60, UNLESS OTHERWISE SPECIFIED.
- FABRICATION AND INSTALLATION OF REINFORCING STEEL AND CONCRETE MATERIALS SHALL BE ACCORDING TO THE "CONCRETE REINFORCING STEEL INSTITUTE MANUAL OF STANDARD PRACTICE" UNLESS OTHERWISE SPECIFIED.
- ALL CONCRETE REINFORCEMENT SHALL BE TIED AT ALL INTERSECTIONS WITH NO. 12 ANNEALED WIRE CONFORMING TO ASTM A82 (COLD DRAWN STEEL).
- CHAIRS, SPACERS, AND REBAR SUPPORTS SHALL MEET THE REQUIREMENTS OF THE "CONCRETE REINFORCING STEEL INSTITUTE MANUAL OF STANDARD PRACTICE". ACCESSORIES FOR PLACING REINFORCEMENT IN CONTACT WITH FORMWORK FOR EXPOSED CONCRETE SHALL BE GALVANIZED OR MADE OF PLASTIC.
- ALL CONCRETE REINFORCEMENT SHALL HAVE A CLEAR COVER OF 3" UNLESS OTHERWISE SPECIFIED. EXPOSED SURFACES OF CONCRETE SHALL BE PROTECTED AND KEPT IN AN MOISTENED CONDITION FOR A PERIOD OF SEVEN DAYS OR TREATED WITH AN ACCEPTABLE CURING COMPOUND IN ACCORDANCE WITH CURING COMPOUND MANUFACTURER INSTRUCTIONS. DO NOT USE CURING COMPOUND ON SURFACES TO RECEIVE GROUT OR OTHER FINISHES. ALL CONCRETE CURING SHALL BE ACCORDING TO ACI 308.1. PROTECT FRESHLY PLACED CONCRETE FROM PREMATURE DRYING AND EXCESSIVE COLD OR HOT TEMPERATURES. COMPLY WITH ACI 306.1 FOR COLD WEATHER PROTECTION AND ACI 301 FOR HOT WEATHER PROTECTION DURING CURING.

LA ONE CALL:



PRIOR TO EXCAVATION, CONTRACTOR SHALL NOTIFY LOUISIANA ONE-CALL (811) TO MARK AND VERIFY EXISTING UTILITIES.

DATE 06-09-2025
DRWN. BY MC
CHKD. BY CV

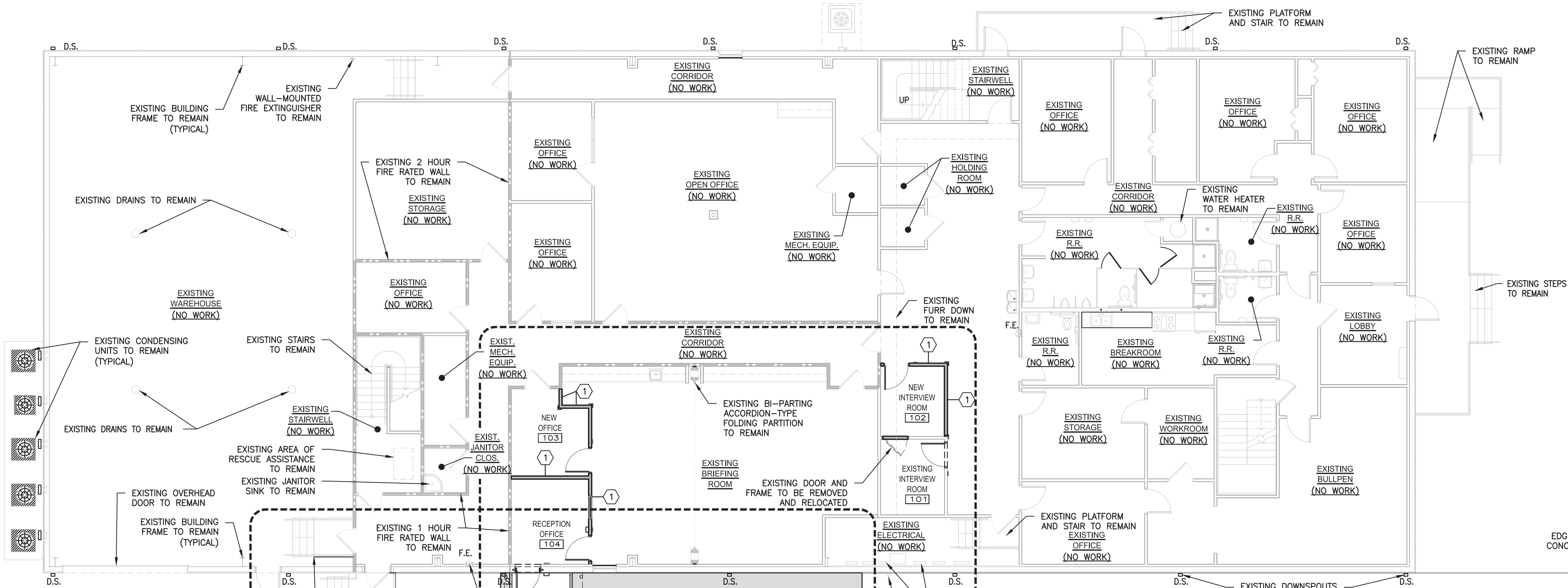
REVISIONS:

SVU - CAT BUILDING RENOVATION
CALCASIEU PARISH SHERIFF'S OFFICE
5716 EAST BROAD ST., LAKE CHARLES, LOUISIANA 70615
SITE PLAN

V&G Architects
VINCENT / SHOWS / GAUTREAUX, APALLC
1502 South Huntington Street
Sulphur, Louisiana 70663
(337) 827-8137
vgarchitects.com



SHEET
A-1
OF 4
PROJECT # 2514



1 FIRST FLOOR PLAN
SCALE: 1/8" = 1'-0"

HARDWARE SETS:

- SET #1: 1-1/2 PAIR OF HINGES, KEYED LEVER-HANDLE LOCKSET WITH EXIT DEVICE (INTERIOR SIDE), CLOSER, ADA COMPLIANT THRESHOLD, FRAME SILENCERS, ELECTRIC STRIKE (ACCESS CONTROLS)
- SET #2: 1-1/2 PAIR OF HINGES, KEYED LEVER-HANDLE LOCKSET, CLOSER, FRAME SILENCERS, ELECTRIC STRIKE (ACCESS CONTROL)
- SET #3: 1-1/2 PAIR OF HINGES, KEYED LEVER-HANDLE LOCKSET, CLOSER, DOOR STOP AND FRAME SILENCERS.

NOTE:
ALL LOCKSETS SHALL BE ABBLOY TO MATCH EXISTING SYSTEM

SCHEDULE OF DOORS

MARK	TYPE	DESCRIPTION	SIZE	FRAME	GLASS	RATING	HARDWARE SET #	REMARKS
			WXH					
D01	A	INSULATED HOLLOW METAL FLUSH PANELDOOR - (PAINTED)	3'-0" x 7'-0"	HOLLOW METAL - (PAINTED)	12"x12" CLEAR WIRED GLASS		SET #1	ACCES CONTROL
D02	B	SOLID CORE FLUSH PANEL WOOD DOOR (STAINED & SEALED)	3'-0" x 7'-0"	HOLLOW METAL - (PAINTED)	NONE	20 MINUTE	SET #2	ACCESS CONTROL
D03	B	SOLID CORE FLUSH PANEL WOOD DOOR (STAINED & SEALED)	3'-0" x 7'-0"	HOLLOW METAL - (PAINTED)	NONE	20 MINUTE	SET #3	
D04	B	SOLID CORE FLUSH PANEL WOOD DOOR (STAINED & SEALED)	3'-0" x 7'-0"	HOLLOW METAL - (PAINTED)	NONE	20 MINUTE	SET #3	
D05	C	RELOCATED SOLID CORE WOOD DOOR - (STAINED & SEALED)	3'-0" x 7'-0"	HOLLOW METAL FRAME - (PAINTED)	NONE	20 MINUTE	SET #3	

GENERAL NOTES:

- INSULATION AND INSULATION ASSEMBLIES SHALL MEET THE REQUIREMENTS OF INTERNATIONAL BUILDING CODE, 2021 ED.
- HVAC SYSTEM SHALL BE CONSTRUCTED IN ACCORDANCE WITH NFPA 101:9.2.
- CONCEALED AND EXPOSED INSULATION SHALL HAVE A FLAME SPREAD AND SMOKE DEVELOPED RATINGS IN ACCORDANCE WITH APPLICABLE CODES.
- LOCKS ON DOORS IN MEANS OF EGRESS SHALL NOT REQUIRE THE USE OF A KEY, SPECIAL DEVICE OR SPECIAL KNOWLEDGE TO OPEN IN THE DIRECTION OF EGRESS.
- CONTRACTOR TO VERIFY EXISTING CONDITIONS IMPACTED BY THE WORK OF THIS PROJECT.
- ALL FIRE RATED PARTITIONS/WALLS SHALL BE CONTINUOUS FROM THE FLOOR SLAB UP TO THE ROOF DECK ABOVE & EXTERIOR WALL TO EXT. WALL.
- ALL PENETRATIONS THROUGH RATED CONSTRUCTION SHALL BE SEALED BY AN APPROVED FIRE RATED ASSEMBLY OR APPROVED THROUGH-PENETRATION SYSTEM CAPABLE OF PREVENTING THE PASSAGE OF FLAMES AND HOT GASES WHEN TESTED IN ACCORDANCE WITH NFPA 251, OR ASTM-E814, RESPECTIVELY.
- PROVIDE LOW LEVEL MOUNTED EXIT SIGNAGE IN ACCORDANCE WITH ADA-AG (2004) 4.30.1, 4.30.4, 4.30.5 AND 4.30.6 (RAISED CHARACTER, LETTER SIZE, MOUNTING) AT ALL REQUIRED EXITS.
- PROVIDE PORTABLE FIRE EXTINGUISHERS ACCORDING TO NFPA 10. ALL WORK AND INSPECTIONS OF PORTABLE FIRE EXTINGUISHERS SHALL BE PERFORMED BY A STATE OF LOUISIANA CERTIFIED AGENT.
- PROVIDE SAFETY GLAZING IN LOCATIONS AS REQUIRED BY CODE.
- PROVIDE SLIP-RESISTANT CONCRETE FINISH ON ALL PAVING, DECKS, LANDINGS, STAIRS AND RAMPS. FINISH TO REMAIN SLIP-RESISTANT UNDER ALL WEATHER CONDITIONS.

SCHEDULE OF ROOM FINISHES

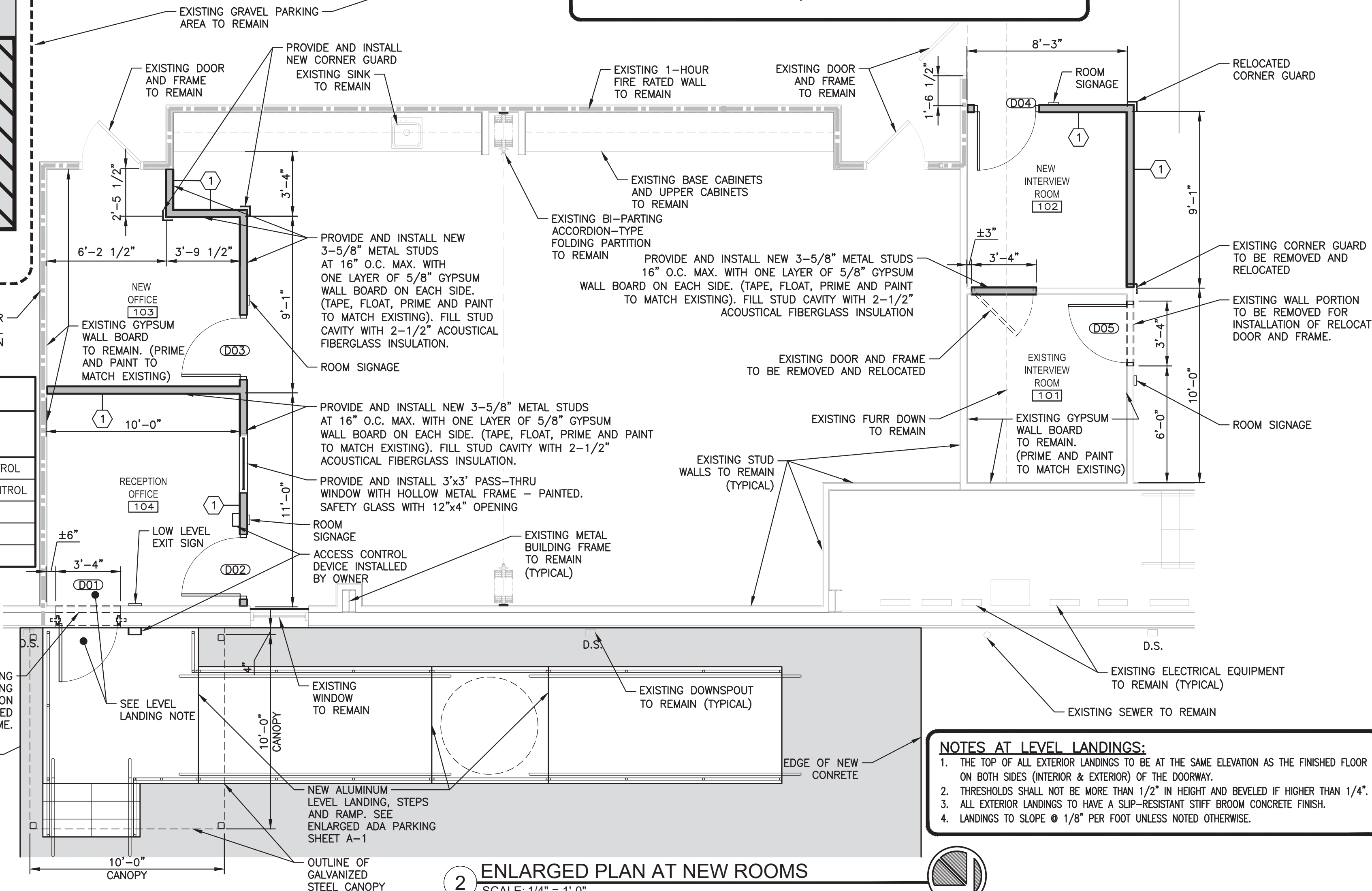
RM #	ROOM NAME	FLOOR	BASE	WALLS	CEILING	CLG HT	REMARKS
			EXISTING CARPET TO REMAIN	NEW CARPET TILE - TO MATCH EXISTING	NEW 4" RUBBER BASE - TO MATCH EXISTING	5/8" GYPSUM WALL BOARD - TO BE PAINTED	EXISTING GYPSUM WALL BOARD - TO BE PAINTED
					EXISTING SUSPENDED CEILING - TO REMAIN	NEW 2'x2' SUSPENDED ACOUSTICAL TILE AND GRID - TO MATCH EXISTING	8'-0"
101	EXISTING INTERVIEW ROOM						1,2
102	NEW INTERVIEW ROOM						1,2
103	NEW OFFICE						1,2
104	RECEPTION OFFICE						1,2

REMARKS:

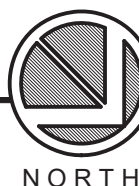
- REMOVE EXISTING FLOORING AND REPLACE WITH NEW AS SCHEDULED.
- REMOVE EXISTING CEILING GRID AND TILE AND REPLACE WITH NEW 2'x2' ACOUSTICAL GRID AND TILE.

WALL TYPE LEGEND:

- 1 METAL STUDS WITH ONE LAYER OF 5/8" GYPSUM WALL BOARD ON EACH SIDE - FILL STUD CAVITY WITH 2-1/2" ACOUSTICAL FIBERGLASS INSULATION



2 ENLARGED PLAN AT NEW ROOMS
SCALE: 1/4" = 1'-0"



DATE 06-09-2025
DRWN. BY MC
CHKD. BY CV

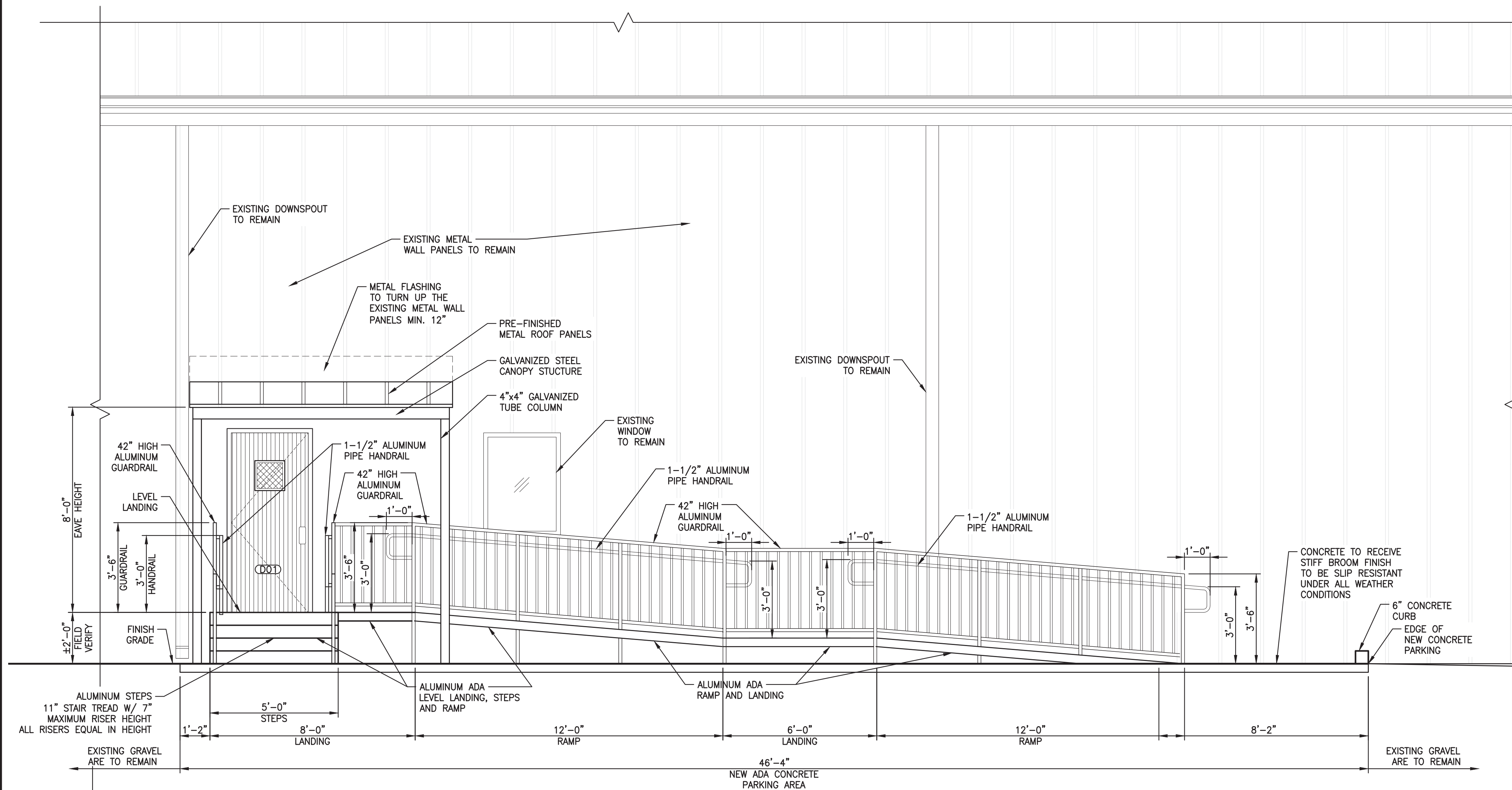
REVISIONS:

SVU - CAT BUILDING RENOVATION
CALCASIEU PARISH SHERIFF'S OFFICE
5716 EAST BROAD ST., LAKE CHARLES, LOUISIANA 70615
FIRST FLOOR PLAN

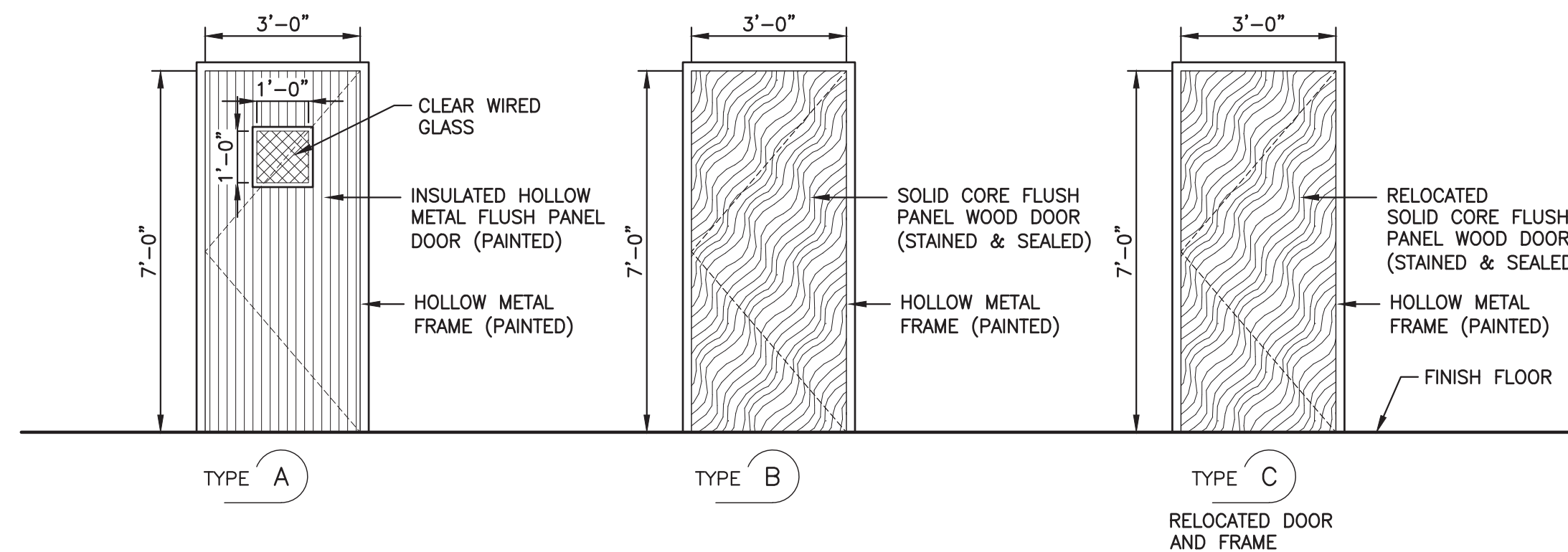
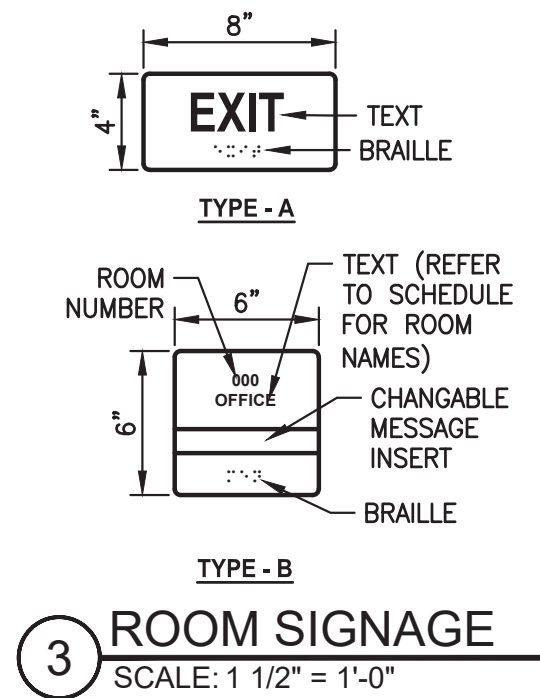
V&G Architects
VINCENT / SHOWS / GAUTREAUX, APALLC
1502 South Huntington Street
Sulphur, Louisiana 70683
(337) 827-8137
vgarchitects.com



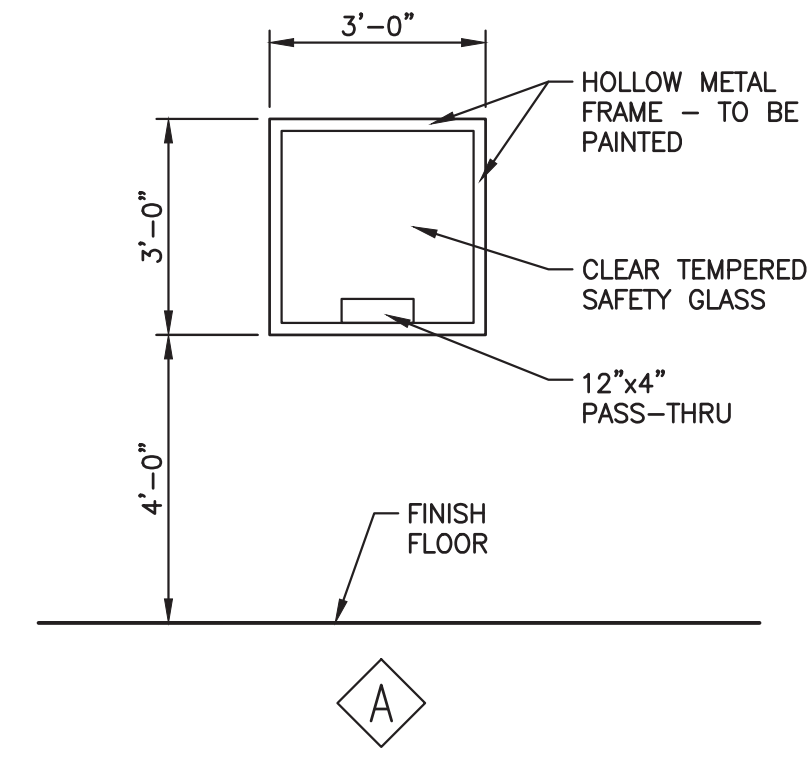
SHEET
A-2
OF 4
PROJECT # 2514



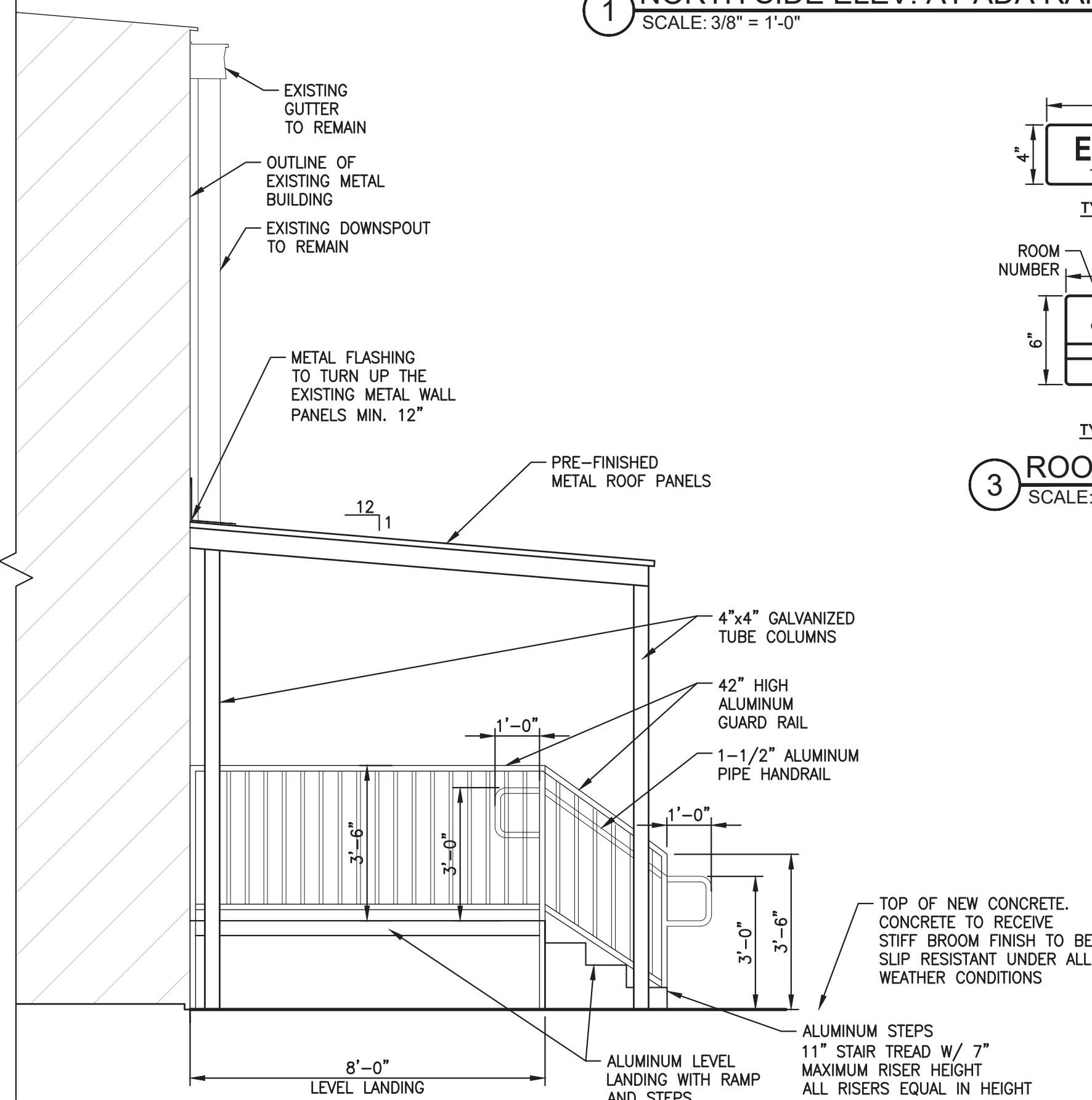
1 NORTH SIDE ELEV. AT ADA RAMP
SCALE: 3/8" = 1'-0"



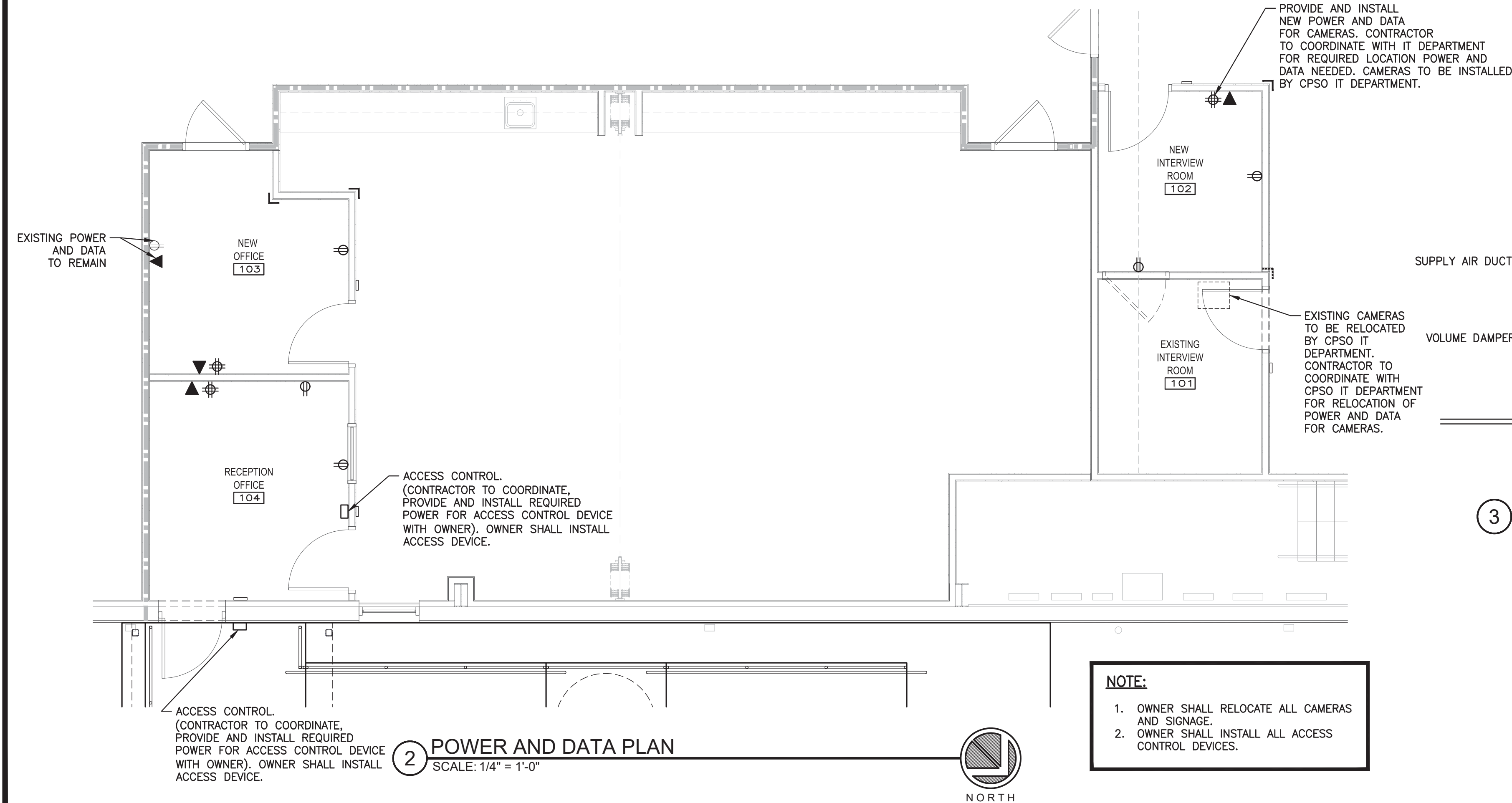
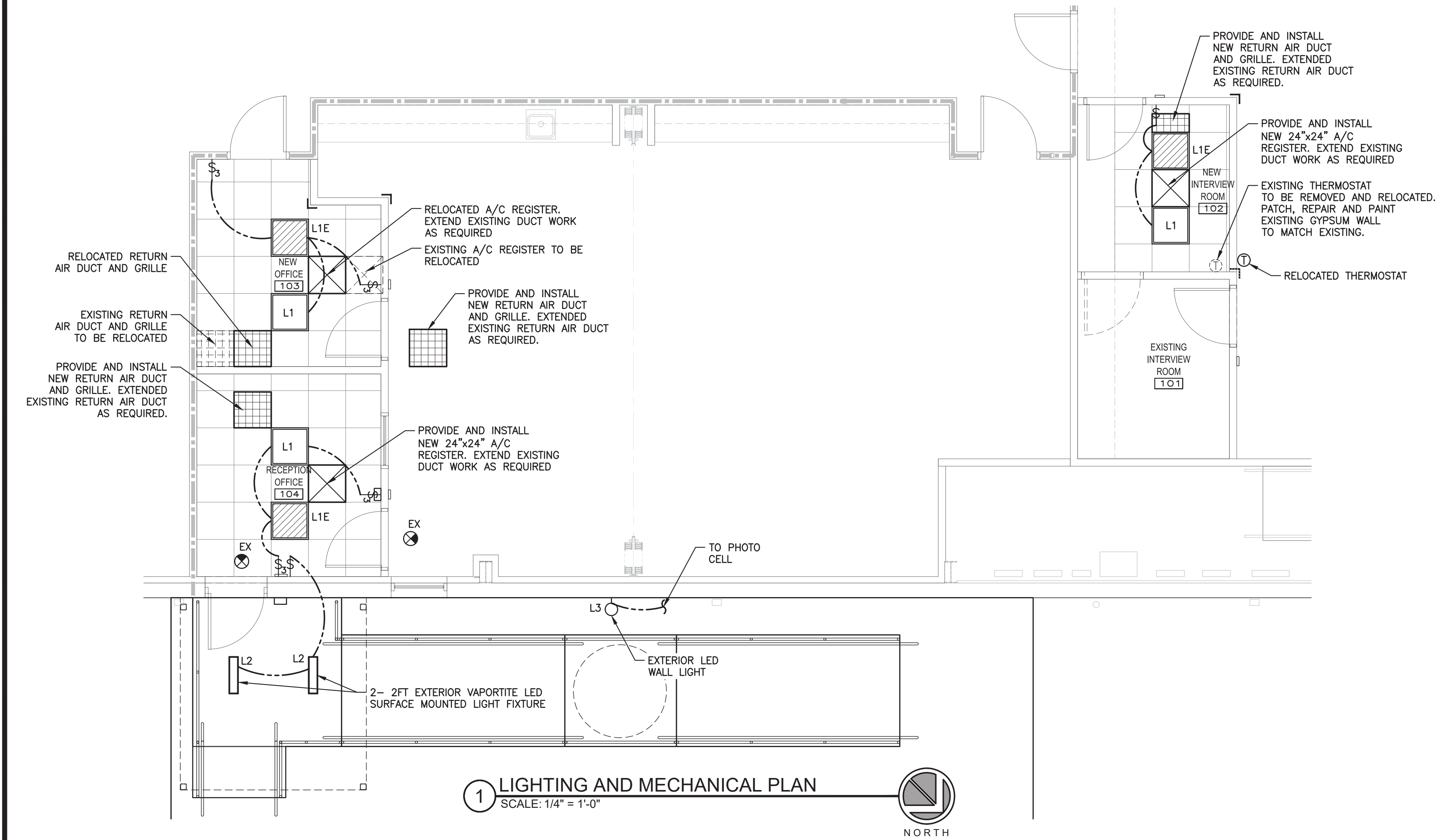
4 VISUAL DOOR SCHEDULE
SCALE: 3/8" = 1'-0"



5 VISUAL WINDOW SCHEDULE
SCALE: 3/8" = 1'-0"



2 EAST SIDE ELEV. AT ADA LANDING
SCALE: 3/8" = 1'-0"



LIGHT FIXTURE SCHEDULE

TYPE	DESCRIPTION	LAMPS	VOLTS	MOUNTING	MANUFACTURER	CATALOG No.
L1	2'x2' LIGHT FIXTURE	LED	120	LAY-IN	METALUX	22SP3435
L1E	2'x2' LIGHT FIXTURE W/ EMERGENCY BACK-UP	LED	120	LAY-IN	METALUX	22SP3435E
L2	2FT., VAPORTITE, LED, 2000 LUMEN, UNV, FIXED OUTPUT, 3500K, WET LOCATION	LED	120	SURFACE	METALUX	2APVTLD-20L835
L31	LED WALL PACK - 7,700 LUMENS, DAYLIGHT (5000K)	LED		WALL MOUNT	ULINE	H-9996
EX	EMERGENCY EXIT LIGHT WITH BATTERY BACK-UP	LED	120	SURFACE	ALL PRO	APX7R-WH

ELECTRICAL SYMBOL LEGEND

- ⊕ DUPLEX RECEPTACLE (18" A.F.F. OR AS NOTED)
CT - COUNTER TOP HEIGHT
UC - UNDER COUNTER
GFCI - GROUND FAULT CIRCUIT INTERRUPTER
WP - WEATHER PROOF BOX
- ⊕ QUADPLEX RECEPTACLE (18" A.F.F. OR AS NOTED)
COLOR OF COVER PLATES TO MATCH EXISTING
- ▼ DATA/COMMUNICATIONS OUTLET (18" A.F.F. OR AS NOTED)
- ⌚ SINGLE POLE TOGGLE SWITCH (48" A.F.F. OR AS NOTED)
- ⌚ 3 - THREE WAY SWITCH
- 2'-0" X 2'-0" LAY IN LED LIGHT
- ▨ 2'-0" X 2'-0" LAY IN LED LIGHT W/ EMERGENCY BATTERY BACK-UP
- ⊗ EMERGENCY EXIT LIGHT

GENERAL ELECTRICAL NOTES:

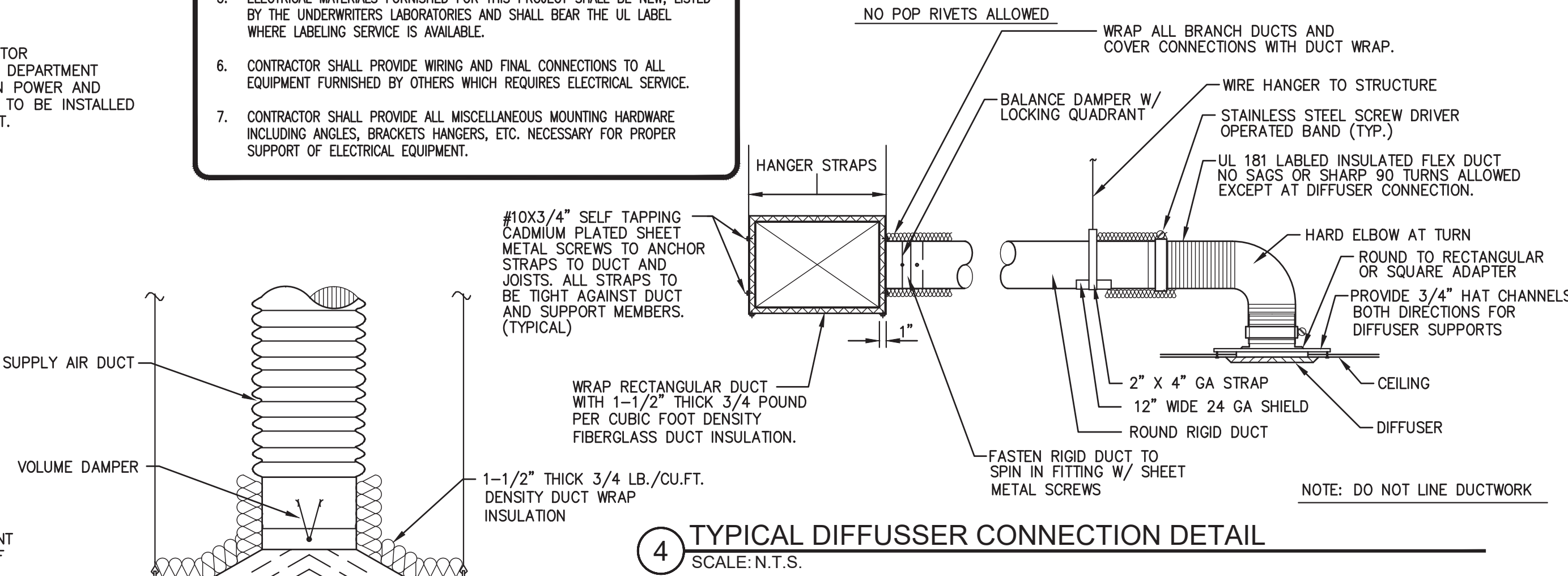
- ALL EQUIPMENT FURNISHED AND ALL WORK SHALL BE IN STRICT CONFORMITY WITH LATEST ELECTRICAL SECTION OF THE LOCAL REGULATION INSPECTIONS DEPARTMENT, THE STATE FIRE MARSHAL AND THE NEC. ANY CONFLICTS SHALL BE BROUGHT TO THE ARCHITECT'S ATTENTION IMMEDIATELY.
- CONTRACTOR SHALL OBTAIN AND PAY ALL FEES REQUIRED IN CONNECTION WITH THE VARIOUS PERMITS, SUBMITTAL TO THE AUTHORITY HAVING JURISDICTION, AND INSPECTIONS.
- UPON COMPLETION OF THE PROJECT, ALL SYSTEMS SHALL BE TESTED IN THE PRESENCE OF THE ARCHITECT OR OWNER.
- CONTRACTOR SHALL GUARANTEE INSTALLATION FOR A PERIOD OF ONE (1) YEAR FROM DATE OF FINAL ACCEPTANCE.
- ELECTRICAL MATERIALS FURNISHED FOR THIS PROJECT SHALL BE NEW, LISTED BY THE UNDERWRITERS LABORATORIES AND SHALL BEAR THE UL LABEL WHERE LABELING SERVICE IS AVAILABLE.
- CONTRACTOR SHALL PROVIDE WIRING AND FINAL CONNECTIONS TO ALL EQUIPMENT FURNISHED BY OTHERS WHICH REQUIRES ELECTRICAL SERVICE.
- CONTRACTOR SHALL PROVIDE ALL MISCELLANEOUS MOUNTING HARDWARE INCLUDING ANGLES, BRACKETS HANGERS, ETC. NECESSARY FOR PROPER SUPPORT OF ELECTRICAL EQUIPMENT.

GENERAL HVAC NOTES:

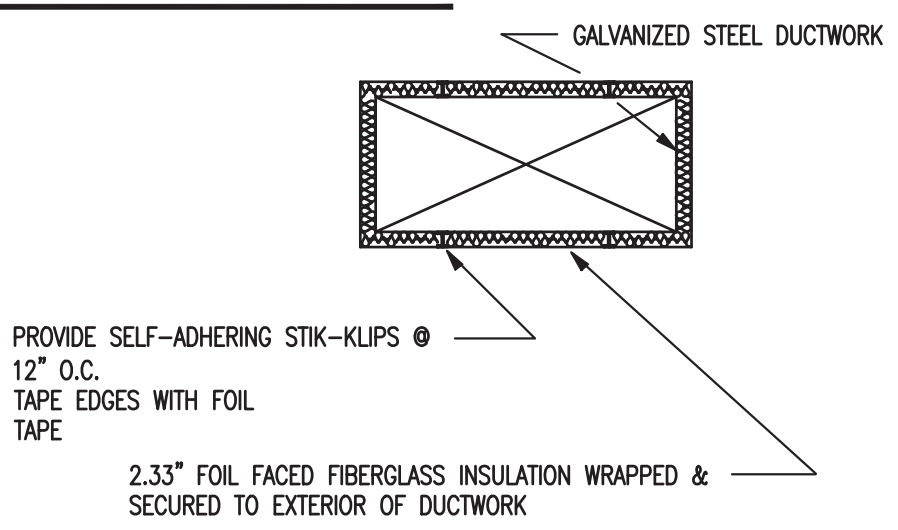
- PROVIDE MANUAL BALANCING DAMPERS AT EACH SUPPLY AIR BRANCH TAKE-OFF.
- PROVIDE MANUAL VOLUME DAMPERS AT EACH RETURN AIR BRANCH DUCT.
- PROVIDE MANUAL VOLUME DAMPERS AT EACH FRESH AIR AND EXHAUST AIR BRANCH DUCTS.
- CONDENSATE DRAIN LINES SHALL BE TYPE "L" HARD COPPER PIPE AND FITTINGS.
- EMERGENCY DRAIN PIPING SHALL BE TYPE "L" HARD COPPER PIPE AND FITTINGS.
- INSULATE CONDENSATE DRAIN PIPING WITH 3/4" THICK CLOSED CELL INSULATION AS PER SPECIFICATIONS.
- INSULATE MECHANICAL ROOM WALLS AS PER MECHANICAL SPECIFICATIONS.
- PROVIDE 4" HIGH EMERGENCY DRAIN PAN BELOW ALL AIR HANDLING UNITS - REFER TO SPECIFICATIONS.
- CONTRACTOR SHALL PROVIDE FLOAT SWITCH AT EACH UNIT DRAIN PAN. FLOAT SWITCH SHALL BE EQUAL TO BECKETT MODEL 1502 AND BE INTERLOCKED WITH UNIT.
- ALL DUCTWORK SHALL BE SEALED WITH UNITED MCGILL SOLVENT BASED DUCT SEALER AS SPECIFIED.
- ALL DUCTWORK SHALL BE INSULATED AS PER SPECIFICATIONS AND AS DETAILED.
- FLEXIBLE DUCTWORK TO CEILING DIFFUSERS SHALL NOT EXCEED 10'-0" IN LENGTH.
- CONTRACTOR SHALL PROVIDE ALL DUCTWORK OFFSETS REQUIRED TO MEET STRUCTURAL CONDITIONS. COORDINATE WITH STRUCTURAL SHOP DRAWINGS.
- CONTRACTOR SHALL COORDINATE CEILING SUPPLY AND RETURN AIR GRILLE LOCATION WITH OTHER TRADES. LOCATE IN CENTER OF CEILING TILE.
- CONTRACTOR SHALL BALANCE AIR CONDITIONING SYSTEM AS PER SPECIFICATIONS. SUBMIT FOUR SETS TO THE ARCHITECT/ENGINEER FOR APPROVAL.
- CONTRACTOR SHALL SUBMIT ON ALL MATERIALS AS INDICATED IN THE MECHANICAL SPECIFICATIONS PRIOR TO ANY INSTALLATION.

NOTE:
IN AREAS WHERE FIRE DAMPERS ARE REQUIRED PROVIDE DEEP ROUND TO RECTANGULAR OR SQUARE ADAPTER AND BUILD GYPSUM BOARD ENCLOSURE.

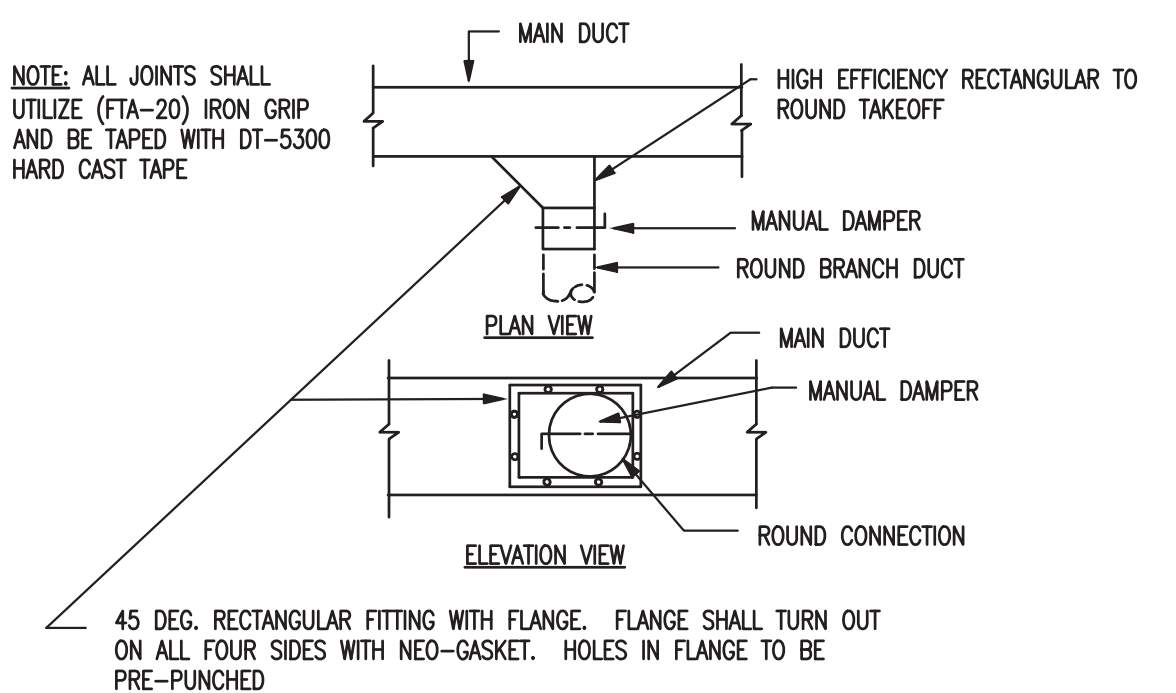
NOTE:
PROVIDE SUPPORT ON ALL BRANCH DUCT RUNOUTS. MINIMUM OF TWO SUPPORTS ON BRANCH DUCTS OVER 6'-0" IN LENGTH.



3 LAY-IN DIFFUSER DETAIL
SCALE: N.T.S.



5 DETAIL - TYPICAL DUCT WRAP INSTALLATION
SCALE: N.T.S.



6 DETAIL - TYPICAL DUCT CONNECTION (SUPPLY OR RETURN)
SCALE: N.T.S.

DATE 06-09-2025
DRWN. BY MC
CHKD. BY CV

REVISIONS:

SVU - CAT BUILDING RENOVATION
CALCASIEU PARISH SHERIFF'S OFFICE
5716 EAST BROAD ST., LAKE CHARLES, LOUISIANA 70615
MECHANICAL AND ELECTRICAL PLANS FIRST FLOOR

V&G Architects
VINCENT / SHOWS / GAUTREAUX, APALLC
1502 South Huntington Street
Sulphur, Louisiana 70683
(337) 827-8137
vgarchitects.com



SHEET
ME-1
OF 4
PROJECT # 2514