

MOSS BLUFF PARKS AND RECREATION OPEN AIR PAVILION RENOVATION

PROJECT #: 25018BA
1180 DON MANUEL BOULEVARD
LAKE CHARLES, LOUISIANA 70611

PROJECT TEAM

OWNER
COMMUNITY CENTER AND PLAYGROUND DISTRICT NO. 4 OF WARD 1
1180 DON MANUEL BOULEVARD
LAKE CHARLES, LA 70611
337.905.0211 PH

BOARD MEMBERS
CONNIE HOFFPAUR - PRESIDENT
MISTER EDWARDS - VICE PRESIDENT
BILL WILLIS - SECRETARY
BILL SOMMERS - BOARD MEMBER
MATT TRAHAN - BOARD MEMBER

ARCHITECT
BROSSETT ARCHITECT, LLC
414 PUJO STREET
LAKE CHARLES, LA 70601
337.439.8400 PH

PROJECT DATA

General Project Description
RENOVATING THE EXISTING OPEN AIR PAVILION AT MOSS BLUFF RECREATION.
INSTALLING A NEW COATING ON THE BASKETBALL COURT AND NEW LIGHT FIXTURES.

Total Area
TOTAL AREA UNDER ROOF: 8325 SF

Site Paving/Impervious Area Data
Parking and Drives: EXISTING (NO CHANGE)
Sidewalks and other Paving: EXISTING (NO CHANGE)

Applicable Codes
Americans with Disabilities Accessibility Guidelines (ADAAG) 2010 Edition
ACSE 7-16

Occupant Loads
N/A

DRAWING LIST

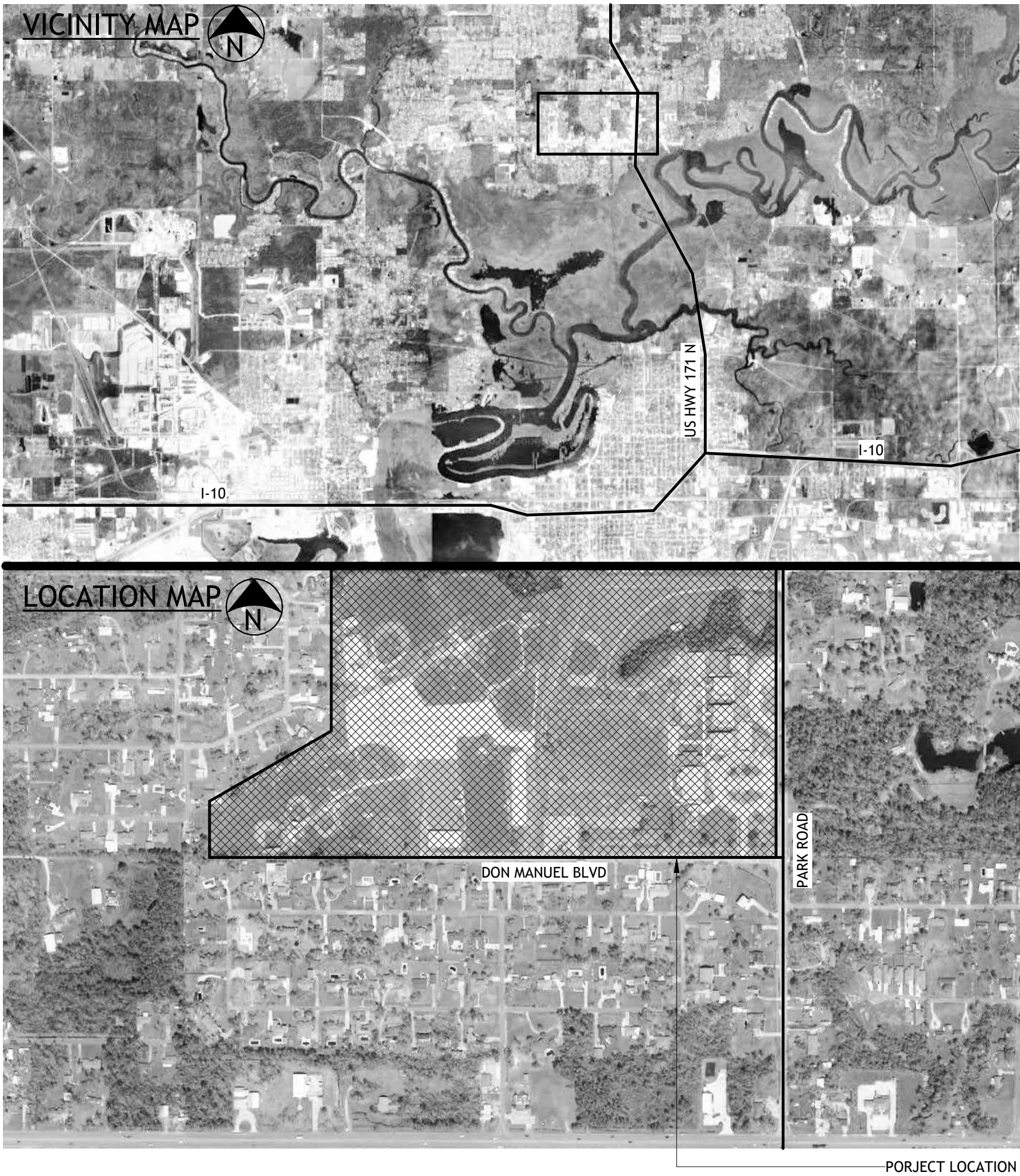
ARCHITECTURAL
T0.1 TITLE SHEET
A1.1 SITE PLAN - OVERALL
A2.0 FLOOR PLAN- DEMO
A2.1 FLOOR PLAN- NEW
A6.0 REFLECTED CEILING PLAN

GENERAL LEGEND

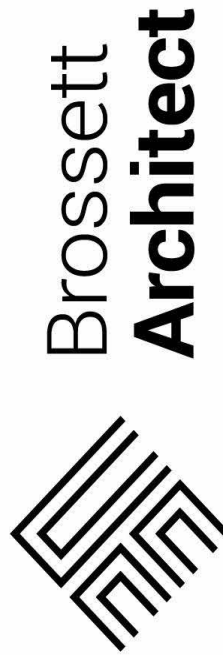
101 ROOM NUMBER
101 DOOR MARK
01 WINDOW MARK
01 AX.X ELEVATION MARK
01 AX.X SECTION MARK

ABBREVIATIONS

AFF ABOVE FINISH FLOOR
AHU AIR HANDLING UNIT
ASL ABOVE SEA LEVEL
BDS WOOD BOARDS
BLDG BUILDING
CC/OC CENTER TO CENTER / ON CENTER
CJ CONTROL JOINT
CLG CEILING
CONC CONCRETE
CONT CONTINUOUS
COORD COORDINATE
CU CONDENSING UNIT
EJ EXPANSION JOINTS
EX EXISTING
EFE EXISTING FIRE EXTINGUISHER & CABINET
EWC ELECTRIC WATER COOLER
FE NEW FIRE EXTINGUISHER & CABINET
FF FINISH FLOOR
GA GAUGE
GB GRAB BAR (SIZE AS NOTED)
GYP BD GYPSUM BOARD DRYWALL
HDG HOT DIPPED GALVANIZED
HORIZ HORIZONTAL
NIC NOT IN CONTRACT
OL OCCUPANCY LOAD
PB PIPE BOLLARD
PV PLUMBING VENT
RCP REINFORCED CONCRETE PIPE
REV REVERSE (IMAGE)
SIM SIMILAR
TYP TYPICAL
VOJ VERIFY ON JOB
W/ WITH
WDW WINDOW
WWR WELDED WIRE REINFORCING



OCTOBER15, 2025



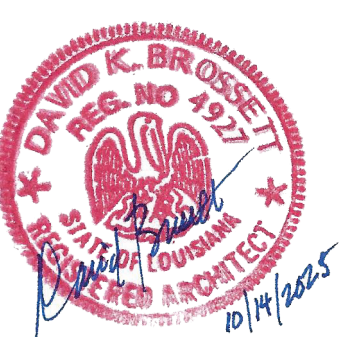
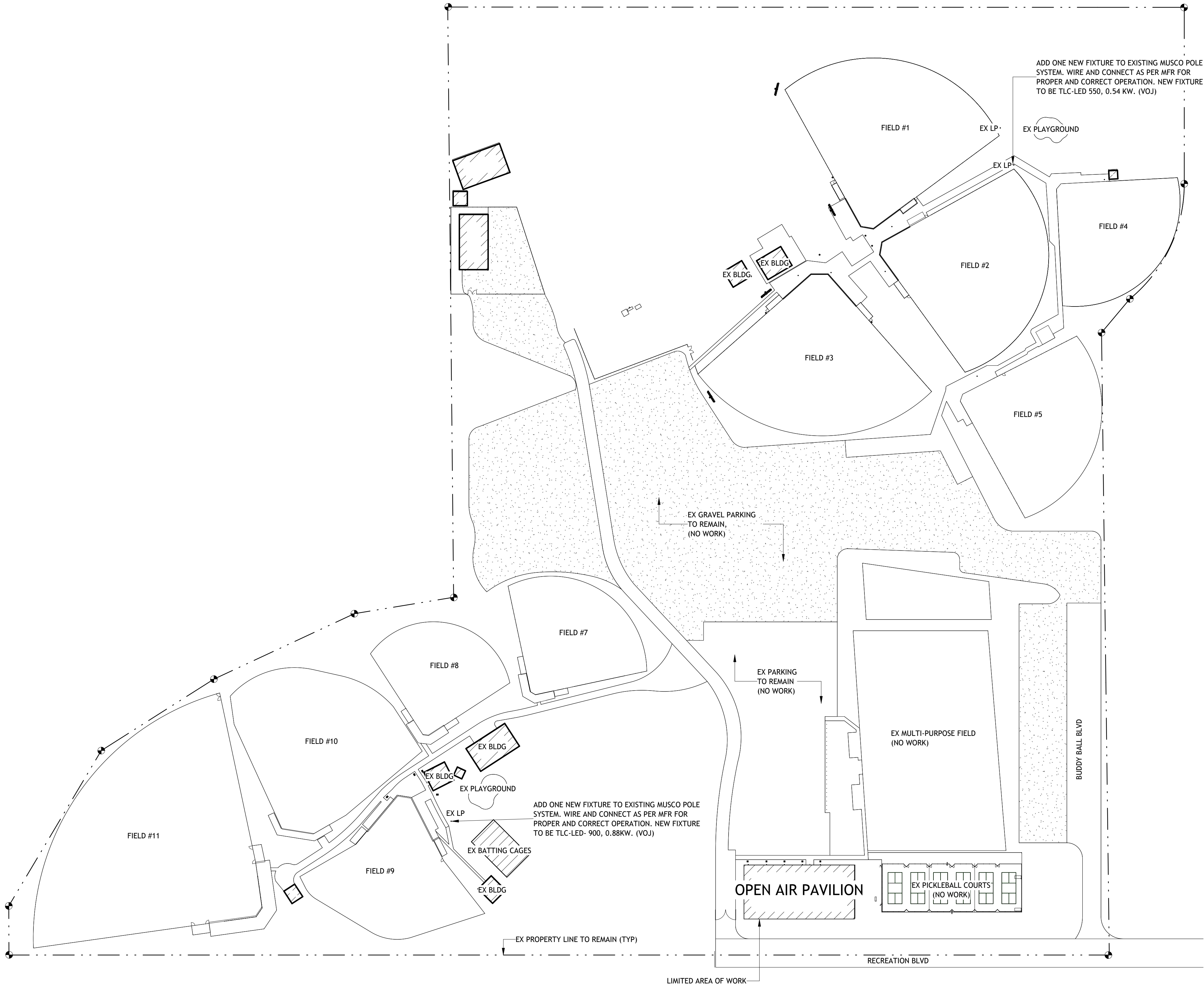
Brossett Architect, LLC • 414 Pujos St., Lake Charles, LA 70601

MOSS BLUFF PARKS AND RECREATION
OPEN AIR PAVILION RENOVATION

1180 DON MANUEL BOULEVARD
LAKE CHARLES, LOUISIANA 70611
TITLE SHEET

SHEET NO.		T0.1	
VER.	DATE	DESCRIPTION	BID DOCS
A	10/15/2025		

© COPYRIGHT 2025,
Brossett Architect, LLC
All Rights Reserved.
This document shall not be
copied or reproduced
without written permission.



**Brossett
Architect**

Brossett Architect, LLC · 414 Pujo St., Lake Charles, LA 70601

**MOSS BLUFF PARKS AND RECREATION
OPEN AIR PAVILION RENOVATION**

1180 DON MANUEL BOULEVARD
LAKE CHARLES, LOUISIANA 70611

SITE PLAN - OVERALL

SHEET NO.

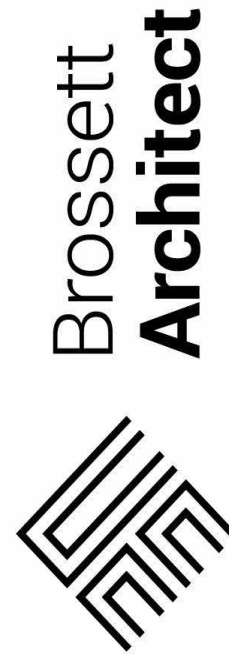
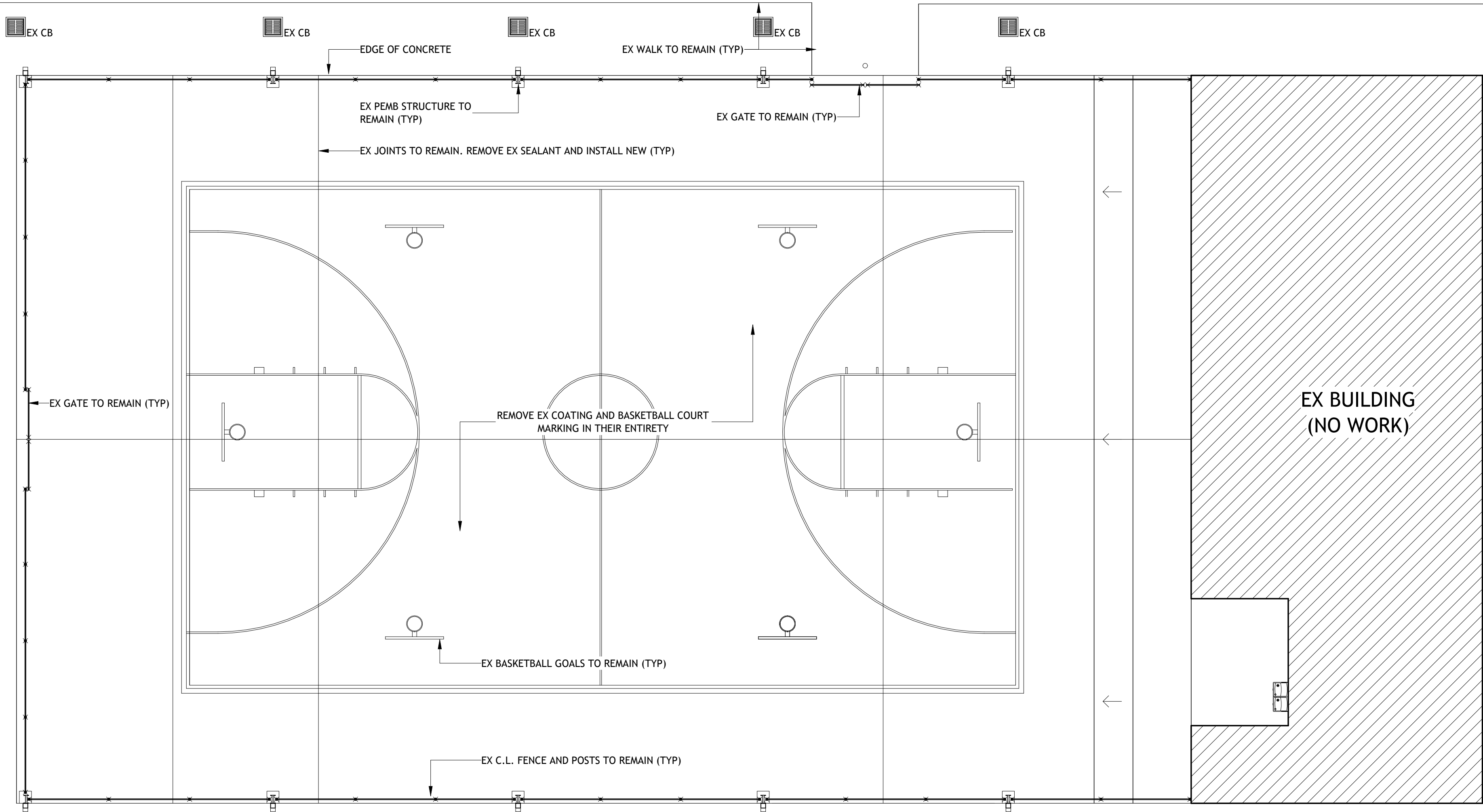
A1.1

ARCH #250188A

VER.	DATE	DESCRIPTION
A	10/15/2025	BID DOCS



EX PARKING TO REMAIN



Brossett
Architect

Brossett Architect, LLC · 414 Pujo St., Lake Charles, LA 70601

MOSS BLUFF PARKS AND RECREATION
OPEN AIR PAVILION RENOVATION

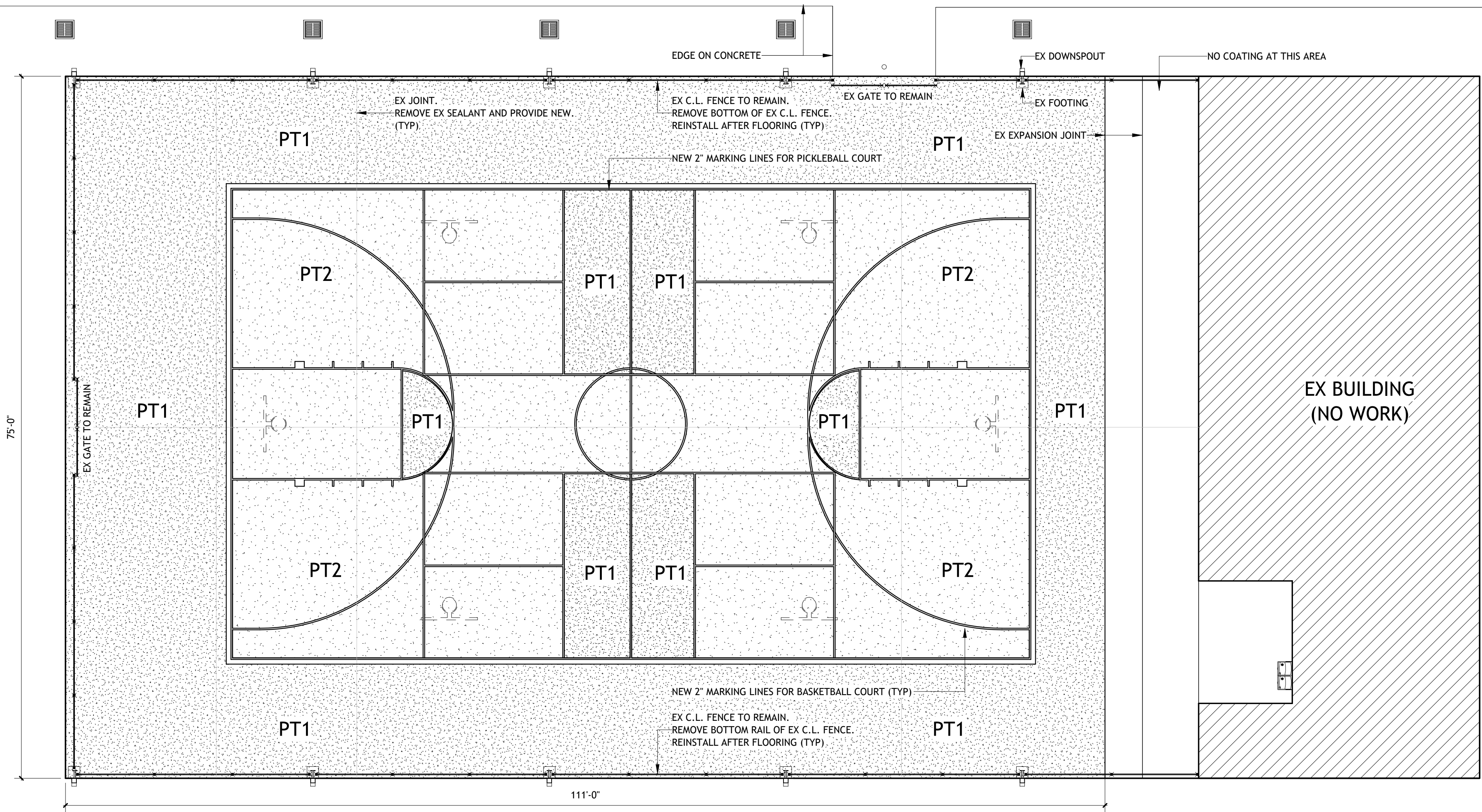
1180 DON MANUEL BOULEVARD
LAKE CHARLES, LOUISIANA 70611
FLOOR PLAN- DEMO

SHEET NO.

A2.0

ARCH #250188A

VER.	DATE	DESCRIPTION
A	10/15/2025	BID DOCS



VER.	DATE	DESCRIPTION
A	10/15/2025	BID DOCS

SHEET NO.

A2.1

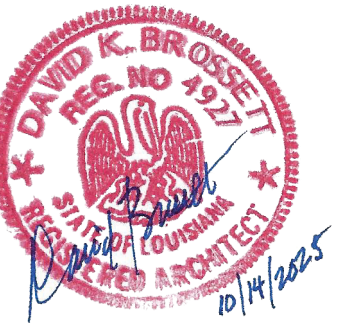
ARCH #250188A

MOSS BLUFF PARKS AND RECREATION

OPEN AIR PAVILION RENOVATION

1180 DON MANUEL BOULEVARD
LAKE CHARLES, LOUISIANA 70611

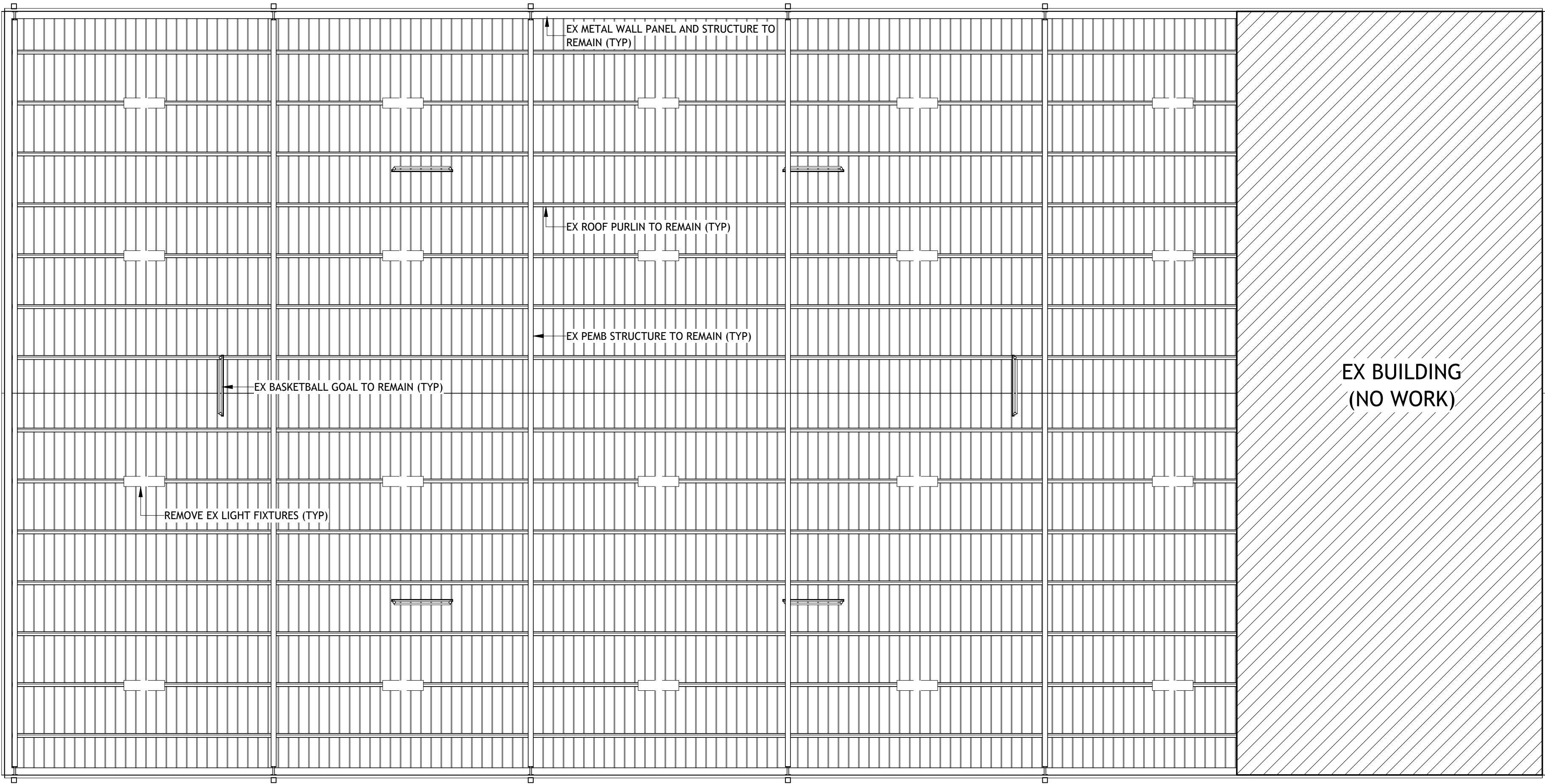
FLOOR PLAN- NEW



Brossett Architect, LLC · 414 Pujo St., Lake Charles, LA 70601

1 REFLECTED CEILING PLAN- DEMO

SCALE: 1/8" = 1'-0"

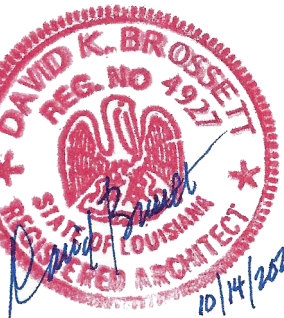
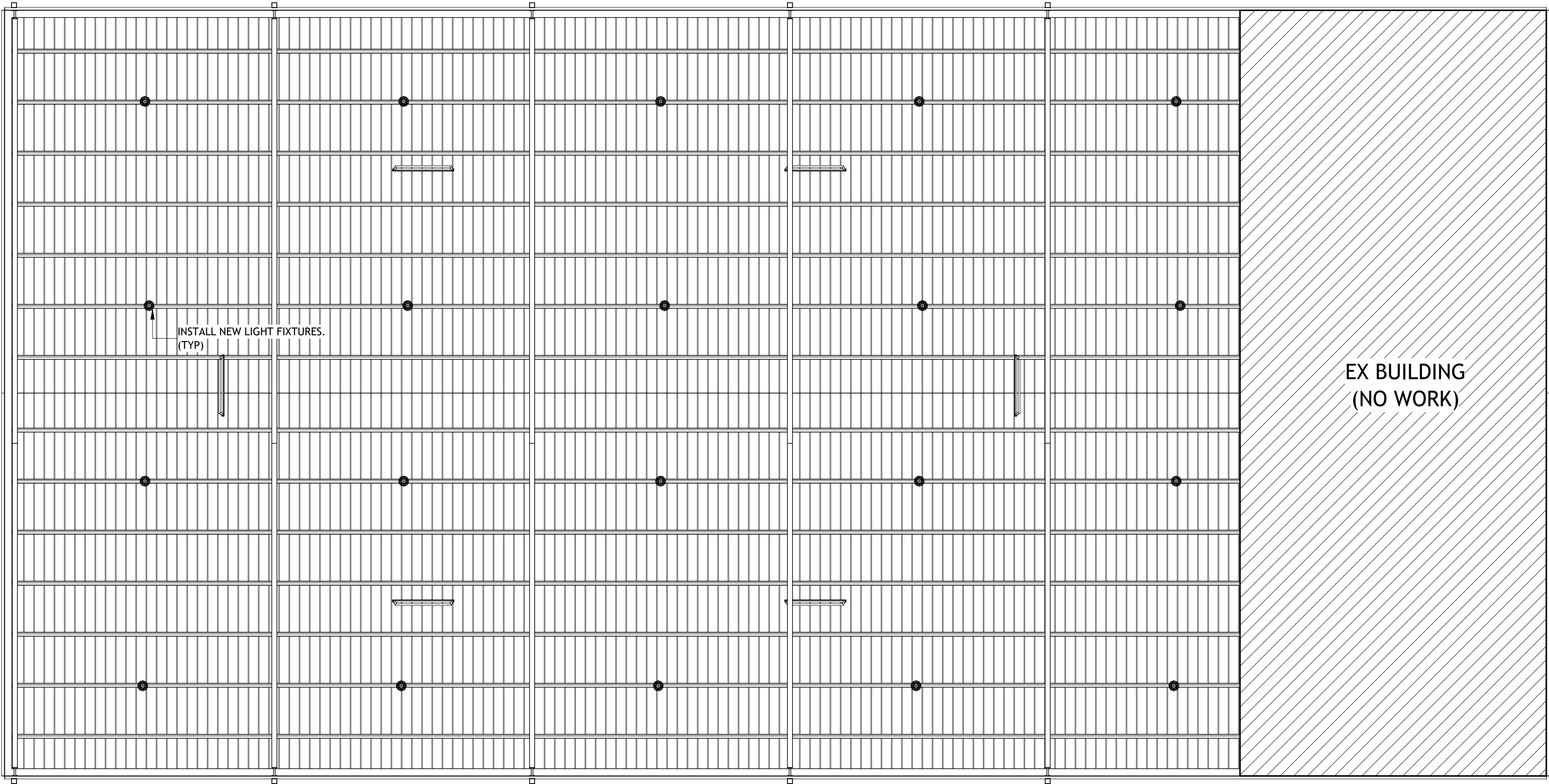


2 REFLECTED CEILING PLAN- NEW

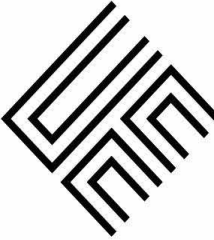
SCALE: 1/8" = 1'-0"



NOTE: NEW LIGHT FIXTURES TO BE: LSI ARB-9-FSI-UNY-850-WHT-SMK-12L/80/5000K
(CONTRACTOR TO VERIFY CURRENT ELECTRICAL AVAILABILITY & LOADS)



Brossett
Architect



Brossett Architect, LLC • 414 Pujo St., Lake Charles, LA 70601

MOSS BLUFF PARKS AND RECREATION
OPEN AIR PAVILION RENOVATION

1180 DON MANUEL BOULEVARD
LAKE CHARLES, LOUISIANA 70611
REFLECTED CEILING PLAN

SHEET NO.

A6.0

ARCH #250188A

VER.	DATE	DESCRIPTION
A	10/15/2025	BID DOCS

© COPYRIGHT 2025,
Brossett Architect, LLC
All Rights Reserved.
This document shall not be
copied or reproduced
without written permission.