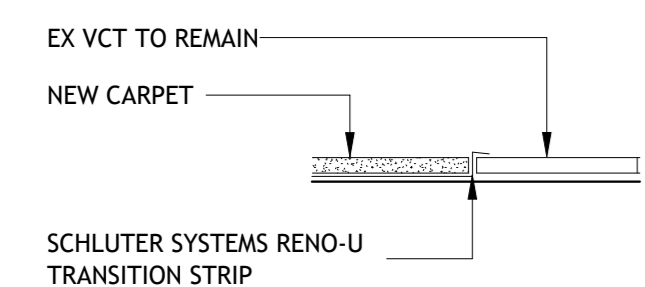


**1 FLOOR FINISH PLAN**  
SCALE: 1/8" = 1'-0"

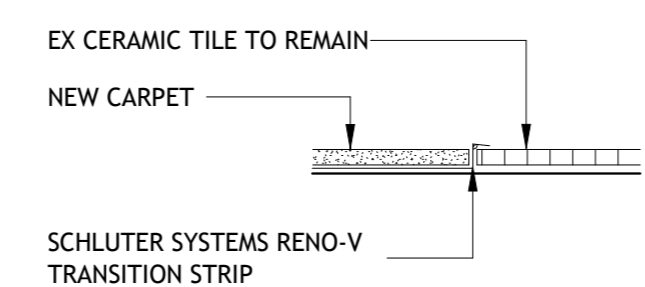
NOTE: ALL FURNITURE, CHAIRS, AND MEDIA/SHELVING TO BE RELOCATED TO ALLOW FOR DEMO AND REINSTALLATION OF NEW WORK.



**3 CARPET TO EX VCT**  
SCALE: 6" = 1'-0"



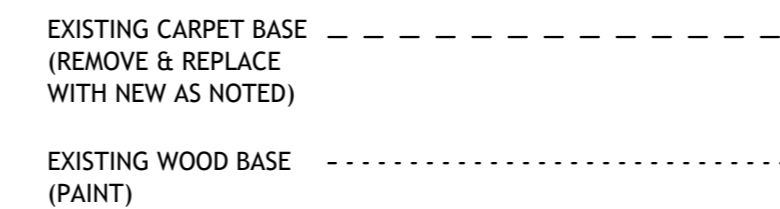
**4 CARPET TO EX CERAMIC TILE**  
SCALE: 6" = 1'-0"



**5 FINISH LEGEND**



**6 BASE MOLDINGS**



**7 FINISH NOTES**

- FINISH NOTES:**
- CONTRACT SHOULD INCLUDE FINISHES ON ALL EXPOSED SURFACES OF FLOORS, WALLS, CEILINGS, TRIM, ACCESS PANELS, EQUIPMENT EXPOSED TO VIEW IN AREA NOTED AS SUCH, AND OTHER ITEMS, UNLESS NOTED OTHERWISE.
  - WALLS AND OTHER APPLICABLE SURFACES TO BE FINISHED PRIOR TO INSTALLATION OF FIXTURES AND EQUIPMENT; CONTRACTOR TO COORDINATE INSTALLATION, AND REPAIR OF WALL SURFACES AND FINISH SYSTEMS DAMAGED DURING CONSTRUCTION OR INSTALLATION OF FIXTURES AND EQUIPMENT AT NO ADDITIONAL COST TO OWNER.
  - ALL PARTITIONS AND GYPSUM BOARD SURFACES TO BE PREPARED TO RECEIVE NEW FINISH AS NOTED PER MANUFACTURER'S RECOMMENDATIONS.
  - ALL ELECTRICAL OUTLET COVERPLATES AND DEVICES ARE TO REMAIN. REMOVE COVERPLATE AND REINSTALL. PROTECT DEVICES.
- FLOOR FINISH SCHEDULE:**
- | DESCRIPTION                       | COLOR     |
|-----------------------------------|-----------|
| CPT CARPET                        | COLOR TBD |
| EX EX FLOOR TO REMAIN (VCT)       | COLOR TBD |
| RB1 4" RUBBER BASE, STRAIGHT      | COLOR TBD |
| EX EX BASE TO REMAIN, PAINT       | COLOR TBD |
| CT EX CERAMIC TILE BASE TO REMAIN | COLOR TBD |
- WALL FINISH SCHEDULE:**
- | DESCRIPTION                                   | COLOR     |
|---|-----------|
| PT1 PAINT (WALLS TO PAINT ARE IN ALTERNATE 1) | COLOR TBD |
| EX EX WALL TO REMAIN                          | COLOR TBD |
- CEILING FINISH SCHEDULE:**
- | DESCRIPTION  | COLOR     |
|--|-----------|
| PT2 PAINT (GYP BD, EX CLGS AND FURRDOWN TO PAINT ARE IN ALTERNATE 1) | COLOR TBD |
| EX EX SUSPENDED CEILING TO REMAIN                                    | COLOR TBD |

**2 FINISH SCHEDULE**

ROOM NUMBER	ROOM NAME	FLOOR	BASE	WALL FINISH				CEILING FINISH	COMMENTS
				NORTH	EAST	SOUTH	WEST		
101	ENTRANCE LOBBY	EX	EX (PT)	PT1	PT1	PT1	PT1	EX	
102	CORRIDOR	EX	EX (PT)	PT1	PT1	PT1	PT1	EX	
103	MENS R.R.	EX	CT					EX	
104	WOMENS R.R.	EX	CT					EX	
105	JAN. CLOSET	EX	EX	PT1	PT1	PT1	PT1	EX	
106	STORAGE	EX	EX	PT1	PT1	PT1	PT1	EX	
107	BREAK AREA	EX	EX (PT)	PT1	PT1	PT1	PT1	EX	
108	MEETING ROOM	CPT	RB1	PT1	PT1	PT1	PT1	EX/PT2	
109	MEETING ROOM	CPT	RB1	PT1	PT1	PT1	PT1	EX/PT2	
110	TEEN AREA	CPT	RB1	PT1	PT1	PT1	PT1	EX/PT2	
111	R.R.	EX	CT					EX	
112	CHILDREN'S ROOM	CPT	RB1	PT1	PT1	PT1	PT1	EX/PT2	
114	OFFICE	CPT	RB1					EX	
115	CORRIDOR	CPT	EX (PT)					EX	
116	SECURITY ROOM	CPT	RB1	PT1	PT1	PT1	PT1	EX	
117	OFFICE	CPT	RB1					EX	
118	OFFICE	CPT	RB1	PT1	PT1	PT1	PT1	EX	
120	CLOSET	CPT	EX (PT)					EX	
121	R.R.	EX	CT					EX	
122	OFFICE	CPT	RB1					EX	
123	CLOSET	EX	EX					EX	
124	BRANCH MANAGER	CPT	RB1	PT1	PT1	PT1	PT1	EX	
125	CLOSET	EX	EX					EX	
126	ADMIN. WING ENTRANCE	CPT	EX (PT)					EX	
127	CORRIDOR	EX	EX					EX	
128	MULTI-PURPOSE ROOM	EX	EX					EX	
129	CLOSET	EX	EX					EX	
130	ASSOCIATE LIBRARIAN	CPT	RB1					EX	
131	BUSINESS OFFICE	EX	EX					EX	
132	CLOSET	EX	EX					EX	
133	BOOKMOBILE	EX	EX					EX	
134	EQUIPMENT ROOM	CPT	RB1	PT1	PT1	PT1	PT1	EX	
135	TECHNICAL SERVICES DEPARTMENT	EX	EX					EX	
136	STAFF R.R.	EX	CT					EX	
137	STAFF ROOM	EX	EX					EX	
138	JAN. CLOSET	EX	EX					EX	
139	BOOK DROP	EX	EX					EX	
140	OFFICE	EX	EX					EX	
141	ELEC.	EX	EX					EX	
142	SPRINKLER	EX	EX					EX	
143	GENERAL STACKS	CPT	RB1	PT1	PT1	PT1	PT1	PT2/EX	

**1 REFLECTED CEILING PLAN - EXISTING**

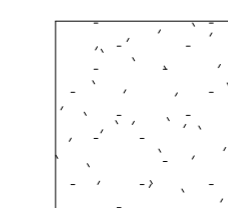
SCALE: 1/8" = 1'-0"



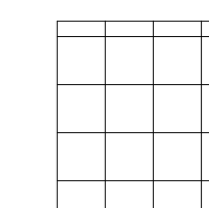
NOTE: EXISTING CEILING SYSTEMS TO REMAIN AS SHOWN. EXISTING GYP BOARD CEILINGS, FURRDOWNS, ETC. TO BE PAINTED IN PUBLIC AREAS AS PART OF ALTERNATE 1.

**2 CEILING FINISH**

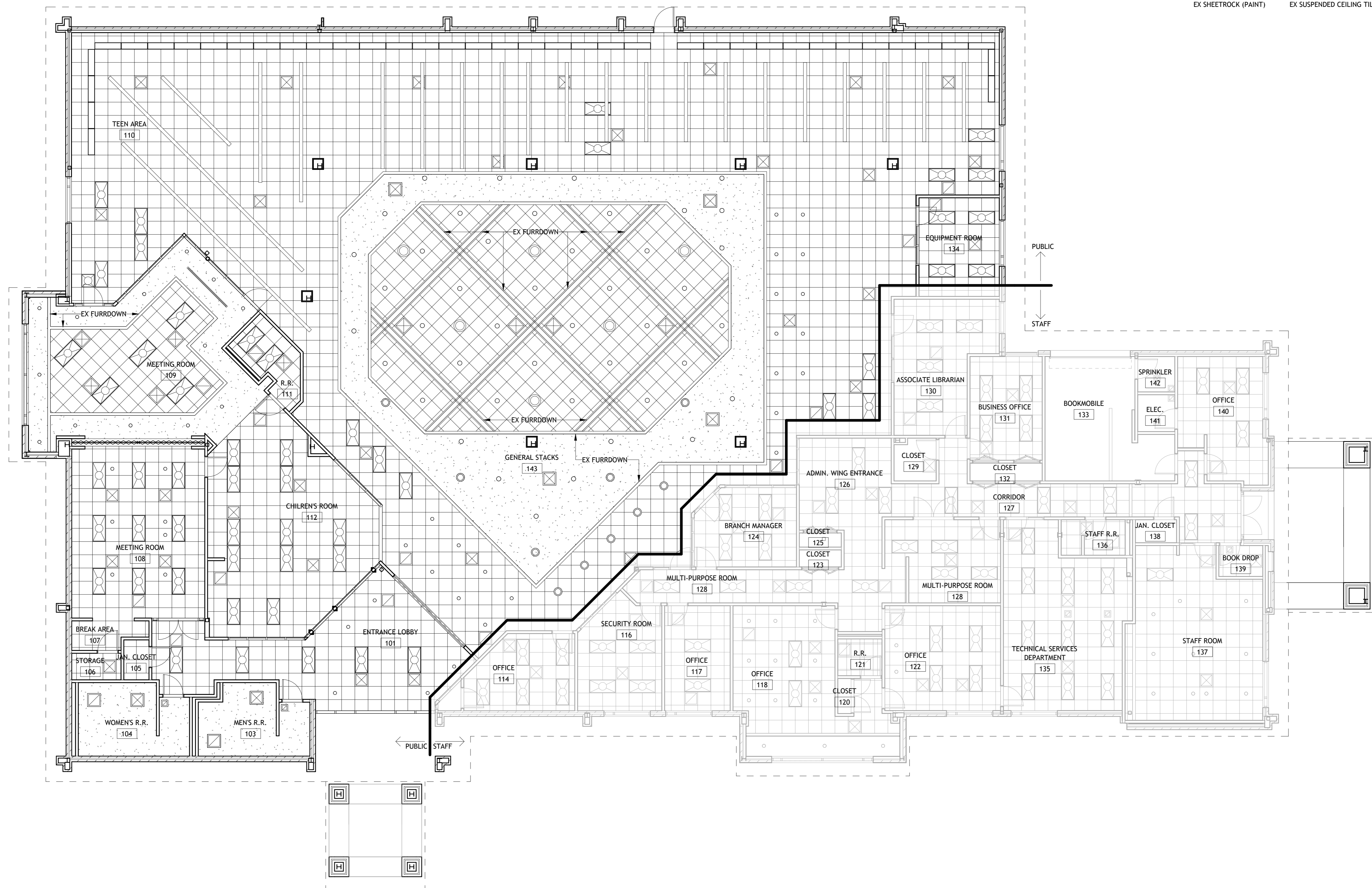
SCALE: 1 1/2" = 1'-0"



EX SHEETROCK (PAINT)



EX SUSPENDED CEILING TILE



VER.	DATE	DESCRIPTION
A	03/02/2016	BID DOCUMENTS