

Summit

by TRC

Standardized Cabinetry
Reliable. Efficient. Well Built.



Twin River Cabinets **Summit Series** delivers durable, semi-custom cabinetry built for efficiency, value, and style. Each cabinet is crafted with precision using quality materials and thoughtful design to simplify projects without sacrificing beauty. With a curated selection of door styles, finishes, and configurations, Summit offers timeless appeal and dependable craftsmanship for homes, rentals, and multi-unit builds alike — the perfect balance of quality and value. Backed by the experience and reliability of the TRC team, Summit is cabinetry designed to look great, perform beautifully, and stand the test of time.

Designed for Every Space

Every **Summit** cabinet is built to order for a tailored fit and seamless installation. Designed to accommodate a wide range of spaces — from kitchens and bathrooms to mudrooms, offices, and beyond — each piece is crafted with care, precision, and attention to detail. The Summit line combines practical design with elevated style, offering versatility that adapts to both residential and multi-unit projects. While the collection features a streamlined selection of door styles and finishes, additional options may be available upon request to help you achieve your perfect look.

Why Summit?

Summit by TRC offers the ideal balance of quality, efficiency, and style. Designed for everyday living, these semi-custom cabinets feature dependable construction, clean lines, and thoughtful design details that make every space feel complete. Perfect for homeowners, builders, and designers alike, Summit provides simplicity without compromise — offering reliable performance, simplified design choices, and lasting beauty at a price that fits your budget. It's cabinetry made to deliver exceptional results and the enduring craftsmanship TRC is known for.



Quality You Can Trust

Summit by TRC cabinetry is built with the same care and attention to detail that define every Twin River project. Each cabinet is constructed using durable materials and reliable joinery methods to ensure strength, stability, and lasting performance. From sturdy cabinet boxes to soft-close doors and drawers, every element is designed to bring everyday function to life — beautifully. With a focus on precision and craftsmanship, Summit delivers cabinetry that feels solid, performs flawlessly, and enhances your home for years to come.

Streamlined Selection

The **Summit** series offers a thoughtfully curated range of door styles and finishes, giving you the freedom to choose confidently without feeling overwhelmed. These semi-custom options make the design process simple and efficient while still allowing flexibility for personal touches. Whether your vision leans toward classic shaker or clean modern slab, Summit delivers timeless looks that fit your space, your lifestyle, and your budget. Each selection is designed to balance beauty, practicality, and long-term satisfaction.

Designed for Real Homes

Summit cabinetry is made to meet the needs of busy households and practical spaces alike. Built for kitchens, bathrooms, mudrooms, laundry rooms, and more, each piece is designed for durability, convenience, and easy maintenance. Thoughtful layouts, quality materials, and smart storage options make every space more functional and inviting. The result is cabinetry that looks great, works hard, and stands up to daily use — no matter how much life happens around it. Summit is built for real homes, real families, and real living.

Smart Value

Summit by TRC bridges the gap between affordability and craftsmanship, offering semi-custom flexibility and efficiency without compromise. Each cabinet delivers premium quality, dependable performance, and enduring style at a price that fits a wide range of budgets. Summit is a smart choice for homeowners, builders, and designers seeking reliable cabinetry that blends function and beauty. Every project is supported by the Twin River Cabinets team — professionals with years of hands-on experience and a true commitment to excellence. We stand behind every cabinet because great spaces begin with great design and trusted craftsmanship.



Butterscotch

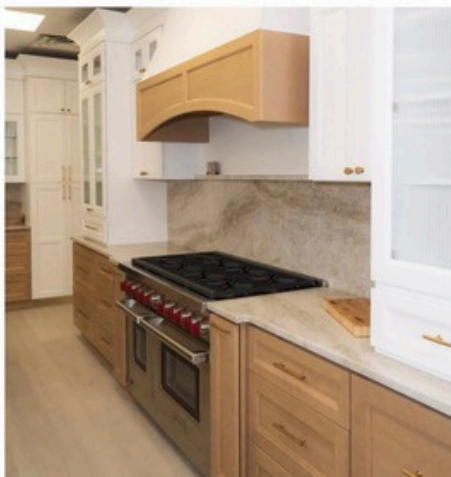
Butterscotch brings warmth and familiarity to a space, offering a soft, natural tone that feels inviting without overpowering the room. Its understated character works beautifully in kitchens that lean timeless rather than trendy, creating an atmosphere that feels comfortable, grounded, and easy to live in. This style pairs effortlessly with both classic details and clean, modern accents.

Panel: *Recessed Shaker*

Edge Detail: *Subtle Inner Bevel*

Best For: *Transitional, Contemporary*

Ideal in: *Warm, natural kitchens with a timeless, inviting feel.*



Castle Grey

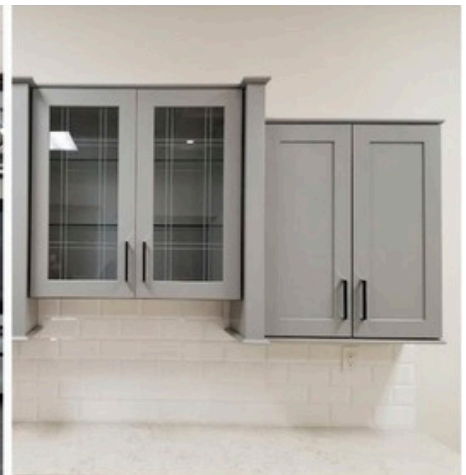
Castle Grey delivers a calm, modern presence with just enough depth to keep things interesting. The tone is cool and balanced, making it an excellent choice for spaces that favor clean lines and subtle contrast. It feels polished and contemporary while remaining neutral enough to adapt as surrounding finishes evolve.

Panel: *Recessed Shaker*

Edge Detail: *Slim Square Frame*

Best For: *Contemporary, Transitional*

Ideal in: *Cool, modern spaces with clean lines and soft contrast.*



Charcoal

Charcoal makes a confident statement with rich depth and dramatic contrast. This bold finish anchors a space, adding sophistication and visual weight without feeling heavy or closed in. Ideal for modern and transitional designs, it creates a strong foundation that pairs well with lighter surfaces and metallic accents.

Panel: *Recessed Shaker*

Edge Detail: *Clean Inner Bevel*

Best For: *Transitional, Contemporary*

Ideal in: *Modern spaces with bold contrast and sophistication.*



Dove

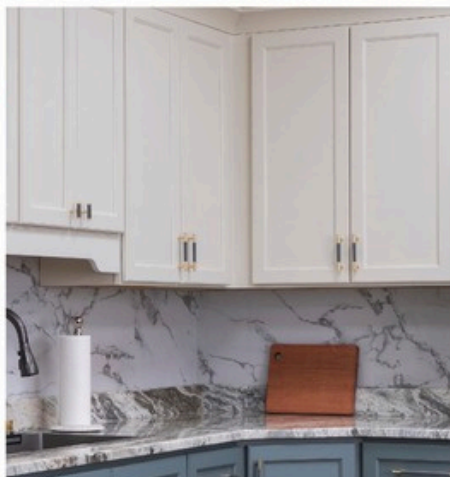
Dove offers a soft, airy feel that brightens a space while maintaining a timeless look. Its gentle tone creates a clean backdrop that feels fresh, open, and welcoming. This style works beautifully in kitchens designed to feel light and effortless, blending seamlessly with both traditional and contemporary elements.

Panel: *Recessed Shaker*

Edge Detail: *Clean Inner Bevel*

Best For: *Transitional, Contemporary*

Ideal in: *Bright, open spaces with a fresh, timeless feel.*



Crème Glaze

Crème Glaze brings classic elegance with a subtle layer of depth and detail. The finish highlights traditional styling while still feeling refined and approachable. It's well suited for spaces that want warmth and character without leaning overly formal, offering a graceful balance between old-world charm and everyday comfort.

Panel: *Raised Center*

Edge Detail: *Multi-Step Moulded Frame*

Best For: *Traditional, Transitional*

Ideal in: *Cool, modern spaces with clean lines and soft contrast.*



Greige

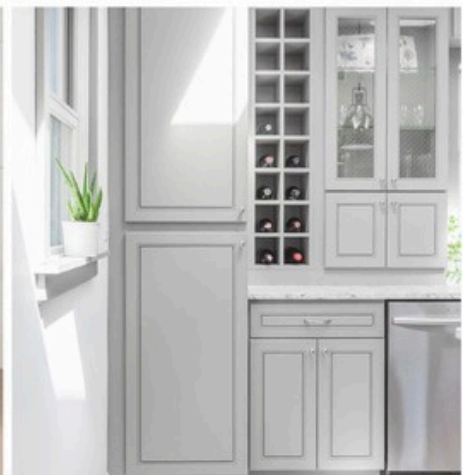
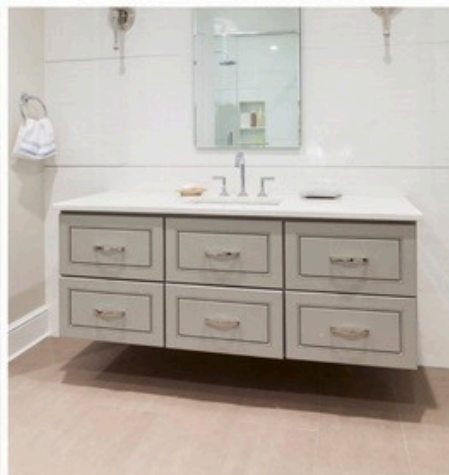
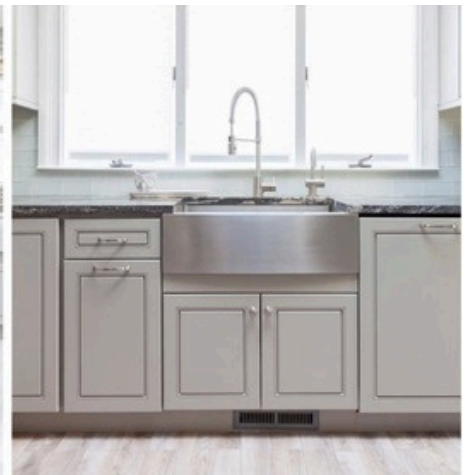
Greige strikes the perfect balance between warm and cool, making it one of the most versatile options in the collection. Its neutral tone adapts easily to a wide range of finishes, creating a cohesive and modern look without feeling stark. This style is ideal for spaces that value softness, flexibility, and long-term appeal.

Panel: *Recessed Center*

Edge Detail: *Slim Framed Moulding*

Best For: *Transitional, Contemporary*

Ideal in: *Neutral spaces with soft warmth and modern balance.*



Espresso

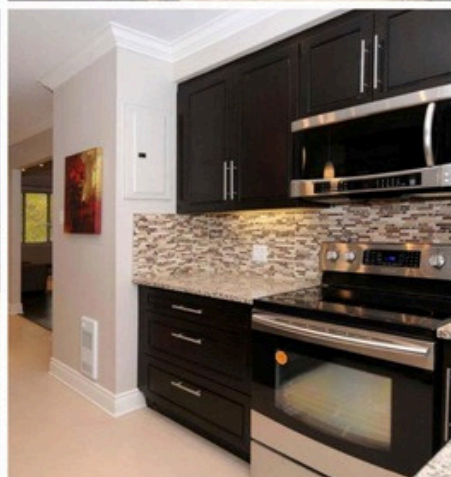
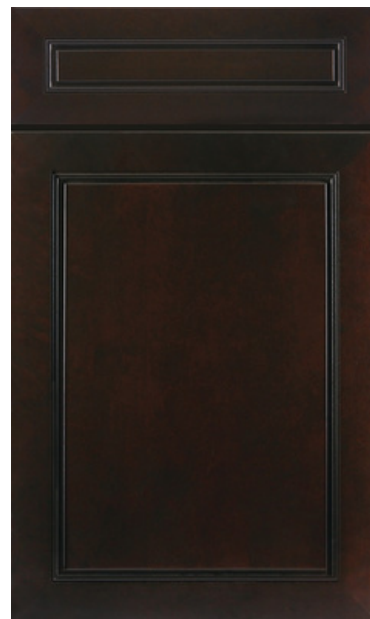
Espresso delivers richness and depth with a sleek, polished presence. The deep tone adds contrast and sophistication, making it a strong choice for spaces that want drama without excess ornamentation. It works especially well in designs that balance dark finishes with clean lines and thoughtful lighting.

Panel: *Recessed Center*

Edge Detail: *Slim Framed Moulding*

Best For: *Transitional, Contemporary*

Ideal in: *Sophisticated spaces with rich depth and sleek contrast.*



Java Coffee

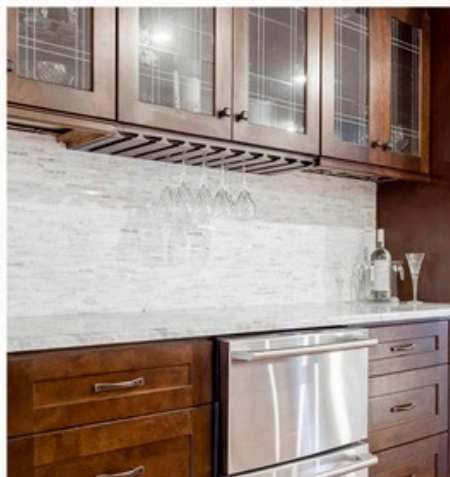
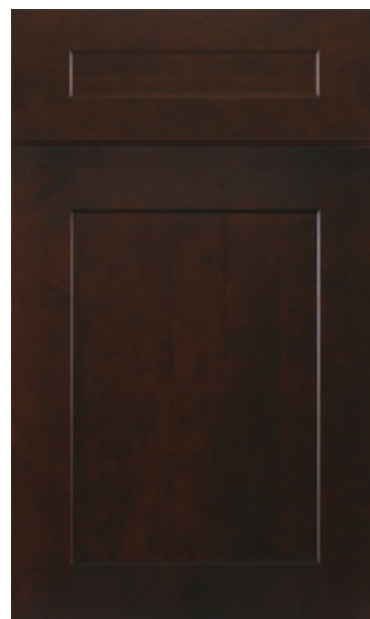
Java Coffee offers warmth and richness with a relaxed, inviting feel. The tone adds depth while still allowing the space to feel comfortable and lived-in. This style is a natural fit for kitchens that blend modern layouts with cozy elements, creating a space that feels both stylish and welcoming.

Panel: *Recessed Shaker*

Edge Detail: *Clean Straight Frame*

Best For: *Transitional, Contemporary*

Ideal in: *Cozy kitchens with rich tones and modern warmth.*



Hazel

Hazel brings a soft, earthy warmth that feels classic and familiar. Its balanced tone works well in transitional spaces, offering enough depth to feel substantial while remaining light enough to keep the room open. This style pairs beautifully with neutral palettes and traditional details.

Panel: *Recessed Center*

Edge Detail: *Framed Bevel with Trim Line*

Best For: *Transitional, Traditional*

Ideal in: *Neutral spaces with warm tones and classic appeal.*



Chocolate Glazed

Chocolate Glazed adds richness and dimension with a refined, layered look. The finish enhances traditional styling while providing a sense of depth and elegance. It's an excellent choice for spaces that lean classic and polished, creating a warm, upscale feel without appearing overly formal.

Panel: *Raised Center*

Edge Detail: *Multi-Step Moulded Frame*

Best For: *Traditional, Transitional*

Ideal in: *Elegant spaces with warm tones and rich finishes.*



Mahogany

Mahogany offers a bold, traditional presence with timeless appeal. The rich tone and formal styling create a sense of craftsmanship and permanence, making it ideal for spaces that value classic design. This style brings warmth and depth to kitchens designed to feel established and enduring.

Panel: *Raised Center*

Edge Detail: *Deep Multi-Step Moulding*

Best For: *Traditional, Transitional*

Ideal in: *Formal spaces with rich tones and classic warmth.*



Mocha Glazed

Mocha Glazed blends warmth and character with a welcoming, classic feel. The finish adds visual interest while maintaining a relaxed, approachable look. It's well suited for kitchens that prioritize comfort and tradition, offering a timeless aesthetic that feels inviting and familiar.

Panel: *Raised Center*

Edge Detail: *Multi-Step Framed Moulding*

Best For: *Traditional, Transitional*

Ideal in: *Warm kitchens with inviting tones and classic character.*



Naval

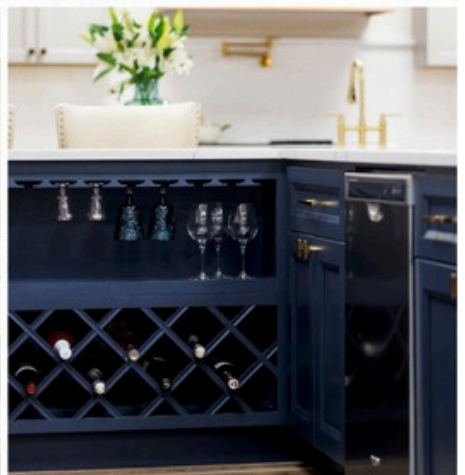
Naval delivers strong contrast and refined depth, making it a standout choice for bold, modern spaces. The rich tone adds drama while still feeling timeless and controlled. This style pairs beautifully with light countertops and warm accents, creating a look that feels both current and enduring.

Panel: *Recessed Shaker*

Edge Detail: *Clean Straight Frame*

Best For: *Transitional, Contemporary*

Ideal in: *Bold spaces with rich color and timeless sophistication.*



Pearl Glazed

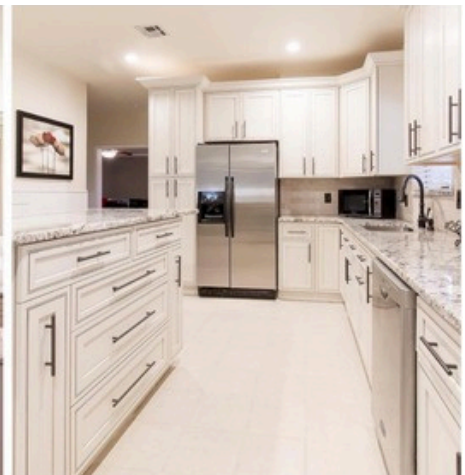
Pearl Glazed brings softness and elegance with subtle detail and warmth. The finish enhances traditional styling while keeping the overall look light and graceful. It's ideal for spaces that want a refined, classic feel without sacrificing brightness or charm.

Panel: *Recessed Center*

Edge Detail: *Framed Bevel Glazed Accents*

Best For: *Traditional, Transitional*

Ideal in: *Light, elegant spaces with soft warmth and charm.*



Pure

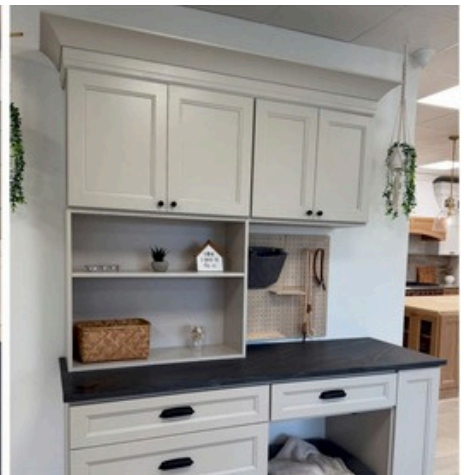
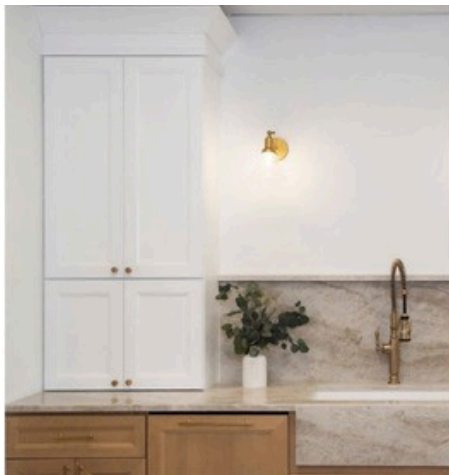
Pure offers a crisp, clean look that feels fresh and timeless. Its simplicity allows architectural details and surrounding finishes to take center stage, making it a versatile choice for modern and transitional designs. This style creates a bright foundation that feels uncluttered and enduring.

Panel: *Recessed Shaker*

Edge Detail: *Clean Straight Frame*

Best For: *Transitional, Contemporary*

Ideal in: *Bright, minimalist spaces with a crisp, timeless look.*



Pebble

Pebble introduces gentle warmth with a calm, neutral tone. The finish feels soft and balanced, making it ideal for spaces designed to feel relaxed and cohesive. It works beautifully in kitchens that favor subtle contrast and a modern, approachable aesthetic.

Panel: *Recessed Shaker*

Edge Detail: *Clean Straight Frame*

Best For: *Transitional, Contemporary*

Ideal in: *Calm, neutral spaces with soft, modern appeal.*



Sage

Sage brings a natural, calming presence with a muted, earthy tone. The color adds personality without overwhelming the space, creating a sense of balance and ease. This style is well suited for designs that blend modern structure with organic warmth.

Panel: *Recessed Center*

Edge Detail: *Subtle Inner Bevel*

Best For: *Contemporary, Transitional*

Ideal in: *Soft, earthy spaces with natural balance and calm.*



White Shaker

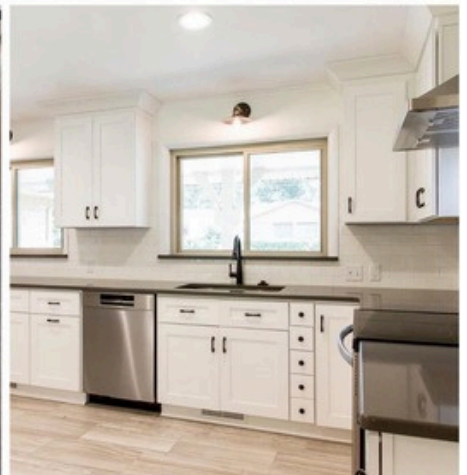
White Shaker delivers a timeless, clean look that never feels dated. Its simplicity makes it endlessly adaptable, working effortlessly across traditional, transitional, and contemporary spaces. This style creates a bright, polished foundation that allows the rest of the design to shine.

Panel: *Recessed Shaker*

Edge Detail: *Clean Straight Frame*

Best For: *Transitional, Contemporary*

Ideal in: *Bright, timeless spaces with crisp, modern simplicity.*





Twin River Cabinets

📍 5350 Hwy 61 N, Unit 5 / Dock C

White Bear Lake, MN 55110

☎ (651) 560-0123

✉ info@twinrivercabinets.com

🌐 twinrivercabinets.com