



## SIGNATURE COLLECTION

*Custom Wood Cabinetry  
Beautiful. Natural. Timeless.*



## Welcome to the Signature Collection

The Signature Collection brings together the beauty of natural hardwoods, custom craftsmanship, and a wide range of design options. As our most popular line, Signature is ideal for homeowners who want durable materials, thoughtful details, and the flexibility to shape their cabinetry through wood species, stain, and door style. It offers a level of customization that supports both classic and modern homes while staying grounded in reliable, long-lasting construction.

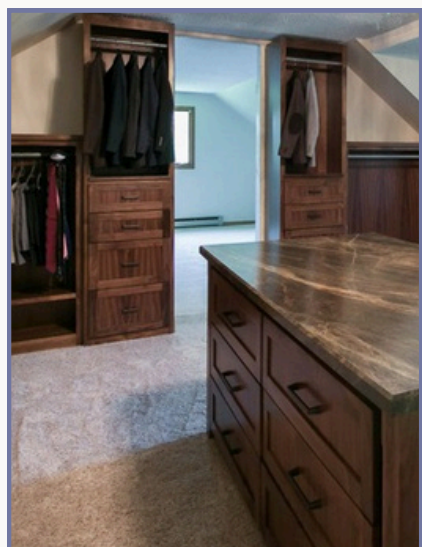
## Why Signature Stands Out

Signature cabinetry highlights what real wood does best: natural grain, organic movement, and subtle variation that give every space warmth and depth. This collection is built for homeowners who appreciate the character of wood and want cabinetry that ages gracefully over time. Unlike preset or standardized options, Signature allows for deeper personalization and adding tailored details around the function of the space.

Signature also includes painted options. Homeowners can choose painted hardwood cabinetry or select a custom MDF door style that falls outside the standard designs offered in our Casa Collection. Any painted door style not part of Casa, even when built from MDF, is considered Signature. This gives you more control over profiles, trim, and architectural details without moving into premium materials.

## A Collection With Range

Signature's versatility comes from its wide selection of woods, stains, and customizable door designs. Each species brings its own personality, from clean, subtle grain patterns to bold, expressive movement, allowing you to shape the tone of your space. Light finishes create a soft, modern look, mid-tone stains add warmth and balance, and deeper tones bring richness and structure. This adaptability makes Signature ideal for nearly any home, whether you're looking for a calm, understated design or a more dramatic focal point.



## Materials With Natural Personality

Each wood species in the Signature Collection offers its own tone, grain, and character. Maple provides a clean, consistent look; Alder and Cherry bring warmth and subtle movement; Red Oak adds texture and structure; and Hickory introduces bold shifts in grain perfect for expressive or rustic inspired designs. These differences allow you to select a material that truly matches your style and the feel of your home.

## Designed for Every Style

One of the greatest strengths of Signature is its adaptability. Whether your home leans traditional, transitional, contemporary, or somewhere in between, Signature supports a broad range of aesthetics. Stains can be used to enhance or soften grain patterns, introduce warmth or contrast, and create the right tone for your overall design. The combination of wood species, door styles, and finishes makes each Signature project highly flexible and tailored to the home.

## A Collection Built to Last

Signature cabinetry is designed for everyday living. Wood naturally matures over time, developing a gentle patina that adds depth and comfort to your space. These subtle changes reflect the authenticity of real materials and contribute to the long-term value of your cabinetry. With proper care, Signature cabinetry remains strong, beautiful, and reliable for years to come.





## Painted Finishes in Signature

While Signature is widely chosen for its wood tones, it also provides excellent flexibility for painted cabinetry. You can choose painted hardwoods for added texture and depth, or select custom MDF door styles that fall outside Casa's standard paint grade designs. This opens the door to more detailed profiles, furniture style construction, and architectural elements that require a more specific look.

## When to Choose Signature Paint

Signature paint is a great fit for homeowners who want a more tailored or visually refined design. Painted hardwood brings subtle grain variation that feels natural and elevated. Custom MDF styles support crisp lines and more intricate shapes. Signature is often chosen for mixed-finish kitchens, accent islands, or cabinetry that needs to coordinate closely with trim, wall details, or built-in features.



## Custom Style, Without Limits

Signature offers the freedom to build beyond preset door styles. If your project calls for a unique profile, additional detailing, or a combination of materials and finishes, Signature supports that level of customization. This allows you to match surrounding architectural features or bring a specific vision to life without moving into premium hardwoods. Signature ensures your design has the right balance of flexibility and craftsmanship.

## Stain, Style & Natural Character

Stain grade cabinetry allows the grain and tone of the wood to define the look. Light stains highlight organic movement and keep the space airy; mid-tones bring warmth and balance; darker finishes create depth and contrast. Because each wood absorbs stain differently, viewing samples at home helps ensure the final color feels right in your lighting and complements your finishes.

## Choosing Wood & Stain

The wood you choose significantly shapes the final look of your cabinetry. Smooth, subtle grains create a clean and refined appearance, while expressive patterns add movement and personality. Stain selection enhances these qualities — natural finishes keep the look soft and organic, while richer tones add structure and depth. Always view samples in your home to see how lighting influences the final color.



## Long Term Durability

Wood cabinetry responds to its environment. With proper humidity levels and care, Signature cabinetry remains stable, strong, and long lasting. Homeowners often appreciate how finishes soften slightly with time, creating a comfortable, lived-in feel.

## Balancing Design Elements

When choosing stains and wood species, consider how flooring, countertops, and wall colors interact with the cabinetry. Signature's wide range of tones makes it easier to create a cohesive space that supports the overall mood of your home.

## Caring for Your Signature Cabinetry

Wood cabinetry is durable and long-lasting, and simple routine care helps preserve its beauty. A soft, damp cloth is typically all you need for daily cleaning. Avoid harsh chemicals or abrasive pads, which can dull the finish. Wipe spills promptly, especially near sinks and appliances.

Because wood responds naturally to seasonal changes, you may notice slight movement or subtle color shifts over time. This is normal and part of its organic character. As your cabinetry ages, the finish will soften, deepen, and develop the warm patina that homeowners love.



## Alder

Alder is a soft hardwood known for its smooth texture, even grain, and warm, inviting tone. Naturally ranging from light tan to soft reddish-brown, it offers a gentle, understated look that blends easily into a wide range of styles, from transitional to rustic to more traditional spaces. Its subtle grain pattern gives it a relaxed, comfortable appearance, making it a favorite for homeowners who want natural beauty without strong visual contrast.

What makes Alder particularly appealing is its ability to take stain evenly. Whether you prefer a light, natural wash or a deeper, richer finish, Alder adapts beautifully and delivers a soft, refined look. It brings warmth without heaviness and character without being overwhelming, creating cabinetry that feels welcoming, comfortable, and timeless.

### KNOTTY ALDER (RUSTIC ALDER)

Knotty Alder, also known as Rustic Alder, features the same warm undertones and soft grain as standard Alder, but with visible knots, mineral streaks, and natural imperfections that add depth and character. These markings give cabinetry a relaxed, rustic feel that works beautifully in craftsman, farmhouse, cabin, and lodge inspired spaces. Because the knots vary in size and placement, each project is unique, with a one-of-a-kind, handcrafted appearance.

Rustic Alder takes stain just as well as standard Alder, but the knots and color variation become more pronounced with darker finishes. Homeowners who love natural texture and organic charm often gravitate toward this option for its warmth, authenticity, and expressive personality.

### ADDITIONAL NOTES

Alder's workability, consistent grain, and approachable cost make it one of the most versatile hardwoods in the Signature Collection. Its smooth texture resembles Cherry at a more accessible price point, and its forgiving grain structure helps it adapt well to a variety of stain colors and design styles. Over time, Alder develops a warm, mellow patina that adds to its natural appeal.





## STAINING & FINISHING

Alder absorbs stain smoothly and evenly, offering a wide range of finish possibilities. Lighter stains highlight its natural warmth and subtle grain, while mid-tone colors bring out a balanced, classic look. Darker finishes can give Alder the appearance of more expensive hardwoods, creating depth and richness without losing its gentle character. Because it is a softer wood, dents or marks may show more prominently under deep stains, which is part of Alder's relaxed, lived-in charm.



## Maple

Maple is a dense, closed-grain hardwood known for its smooth texture, subtle grain patterns, and naturally light, creamy tone. Its refined appearance makes it one of the most adaptable choices in the Signature Collection, supporting everything from modern minimalism to classic, transitional designs. Because Maple has minimal visible grain, it creates a clean, consistent backdrop that feels polished and quietly sophisticated.

Homeowners often choose Maple when they want a hardwood that blends seamlessly into the overall design without taking visual center stage. Its understated grain brings softness and balance to a room, allowing other features such as countertops, flooring, and hardware, to stand out. Maple's natural color ranges from pale cream to soft golden hues, offering a warm, neutral foundation that works well with both light and dark stain colors.



### A NOTE ON PAINT GRADE MAPLE

Maple is one of the best hardwood options for painted cabinetry because of its smooth, closed grain. When painted, Maple delivers a crisp, refined finish that resists wear and looks polished for years. This makes it an excellent choice for mixed-finish kitchens, where painted upper cabinets are paired with stained lowers, or for homeowners who want the durability of wood under a painted surface.

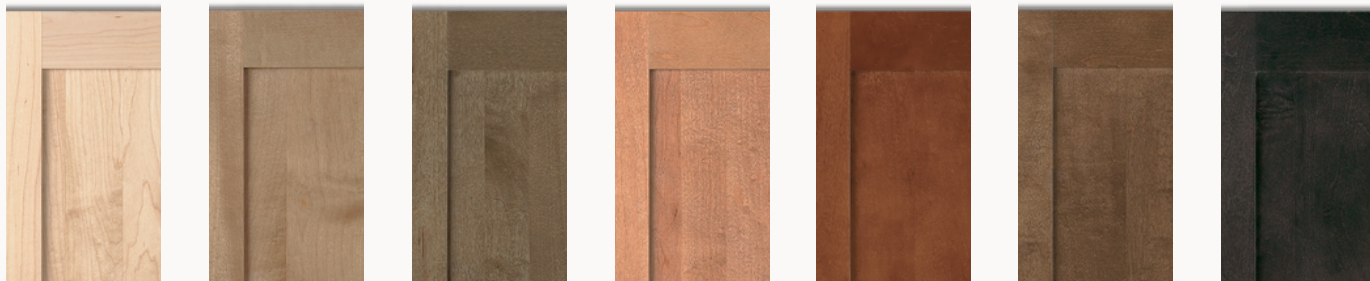
### ADDITIONAL NOTES

Maple's durability, versatility, and clean aesthetic make it a staple in custom cabinetry. Its minimal grain movement brings a sense of calm and clarity to a room, while its strength ensures long-lasting performance in busy kitchens and hardworking mudrooms. Because Maple is naturally consistent, it's a great choice for homeowners who prefer a smooth, uniform look without strong contrast or bold variation. With its adaptable character and enduring appeal, Maple remains one of the most trusted materials in custom cabinetry design.



## STAINING & FINISHING

Maple accepts stain, but its dense, closed grain can make darker colors appear slightly uneven. For the most consistent results, many homeowners opt for lighter or natural finishes that highlight Maple's soft grain and smooth texture. These lighter tones create a fresh, timeless look that ages gracefully. Maple can also be painted and is widely used as a premium paint grade option due to its smooth surface and excellent durability. Whether stained or painted, Maple delivers a crisp, refined finish that works beautifully in both modern and transitional spaces.



## Red Oak

Red Oak is a strong, open grain hardwood known for its distinctive texture and warm, traditional character. Its grain patterns are bold and expressive, ranging from sweeping cathedrals to straight, even lines. These natural variations give Red Oak a sense of craftsmanship and authenticity that has made it a staple in American homes for generations.

Its natural color ranges from light tan to reddish-brown, offering a warm foundation that pairs beautifully with a wide variety of stain colors. Red Oak works especially well in spaces that embrace depth, structure, and warmth, such as traditional, craftsman, or rustic-inspired interiors. For homeowners who appreciate visible grain and timeless charm, Red Oak delivers cabinetry with personality and everyday durability.



### STANDARD RED OAK

This cut showcases the wood's natural cathedral patterns and textured grain. It's expressive and full of movement, giving cabinetry a warm, handcrafted feel that anchors a room beautifully.

### QUARTER-SAWN RED OAK

Quarter-sawn Red Oak is cut at a precise angle that creates a straighter, more uniform grain pattern with distinctive "ray fleck" figuring throughout. This cut is prized for its stability and its refined, linear appearance. The result is cabinetry that feels more structured and tailored, with a smoother visual flow than standard Red Oak. Quarter-sawn Red Oak is a favorite in craftsman and mission-style designs, but it also adapts well to modern and transitional spaces where a cleaner grain is preferred.



Both cuts share Red Oak's natural warmth and durability, but each brings its own personality to a project. For homeowners choosing between the two, the decision often comes down to whether they prefer the expressive movement of standard Red Oak or the calm, even lines of quarter-sawn material. Either option delivers timeless character and a sense of substance that fits beautifully into a wide range of homes.



## STAINING & FINISHING

Red Oak absorbs stain readily, making it one of the most flexible woods in terms of finish options. Lighter stains highlight its natural warmth, while medium and darker tones enhance its pronounced grain patterns and bring out deeper, richer hues. Because of its open grain, Red Oak always maintains visible texture, even under darker finishes — a feature many homeowners love for its organic, handcrafted look. While Red Oak can be painted, it is most often stained to celebrate its natural detail and movement.





## Cherry

Cherry is a smooth, fine grained hardwood known for its natural warmth and graceful aging process. Its color begins as a soft pinkish-red and gradually deepens into a rich, reddish-brown tone as it matures. This gentle darkening is part of Cherry's charm — a natural patina that develops over months and years, giving the cabinetry depth, richness, and a lived-in elegance.

Cherry's grain is subtle and consistent, with occasional mineral streaks or delicate curls that add character without overwhelming the design. These qualities make it a favorite for homes seeking a timeless, elevated look. Cherry fits beautifully into formal, traditional, and transitional spaces, bringing a sense of warmth and sophistication for cabinetry that feels intentional and beautiful, no matter the style of the home.



### RUSTIC CHERRY

Rustic Cherry offers the same warm undertones and fine grain as standard Cherry, but with visible knots, mineral streaks, and greater color variation. These natural features give Rustic Cherry a more relaxed, lived-in feel while still carrying the sophistication of Cherry's base characteristics. The result is cabinetry with warmth, texture, and personality, perfect for homeowners who want elegance with a hint of rustic charm.

Rustic Cherry takes stain beautifully. Lighter finishes highlight the variation, while deeper colors bring out dramatic contrast between knots, grain, and the underlying warmth of the wood. Each door develops its own unique pattern, creating cabinetry full of depth and natural character.



### ADDITIONAL NOTES

Cherry is one of the most refined hardwoods in the Signature Collection. Its aging process, especially during the first 6 to 12 months, brings a beautiful, natural evolution to the space. Homeowners who appreciate warmth, depth, and understated luxury often gravitate toward Cherry for its balance of elegance and durability. It performs exceptionally well in kitchens, libraries, offices, and vanities where a rich, timeless feel is desired.

## STAINING & FINISHING

Cherry takes stain well, though many homeowners choose lighter or natural finishes to highlight the wood's inherent beauty. Because Cherry continues to darken with exposure to light, even clear or lightly tinted finishes develop a deep, rich tone over time. Medium and dark stains can create a formal look, though some slight variation in absorption is normal and part of Cherry's natural character. Cherry is rarely painted, as its fine grain and warm tones are central to its appeal.



## Hickory

Hickory is one of the strongest and most visually expressive hardwoods in the Signature Collection. Its natural contrast between light sapwood and darker heartwood creates a bold, striking pattern that instantly draws attention. The grain is lively and full of movement, with prominent shifts in tone and texture that bring an unmistakable sense of authenticity to any space.

This species is ideal for homeowners who love wood that feels natural, rugged, and full of life. Hickory works beautifully in rustic, craftsman, farmhouse, and cabin inspired interiors, or in modern spaces that embrace organic texture. Its substantial grain and durable structure make it great for busy kitchens, mudrooms, and family centered areas where strength and character matter.

### RUSTIC HICKORY

Rustic Hickory enhances all the qualities Hickory is known for by embracing more knots, mineral streaks, and dramatic color shifts. The variation between light and dark tones becomes even more pronounced, creating cabinetry with strong visual interest and unmistakable rustic appeal. Rustic Hickory is a favorite for mountain, cabin, lodge, and farmhouse inspired homes where texture and natural character take center stage.

Stains behave similarly on Rustic Hickory, though knots and darker areas become more expressive with deeper finishes. Lighter stains preserve the full range of contrast, highlighting every detail in the grain, while darker tones create a moodier, more dramatic effect. Rustic Hickory is ideal for homeowners who want cabinetry that feels warm, rugged, and truly one-of-a-kind.

### ADDITIONAL NOTES

As one of the hardest domestic hardwoods, Hickory offers exceptional durability and long lasting performance. Its energetic grain brings warmth, depth, and personality to a room, creating cabinetry that stands out. Because Hickory's variation is a defining trait, each project feels unique, meaning no two doors or drawer fronts will ever look exactly the same. For homeowners who appreciate natural storytelling in their materials, Hickory delivers unmatched authenticity.





## STAINING & FINISHING

Hickory accepts stain well, but its dramatic contrast always remains visible, which is exactly what many homeowners love about it. Lighter finishes emphasize the natural variation between sapwood and heartwood, highlighting the wood's organic pattern and movement. Medium and darker stains soften some of the extremes while still showcasing Hickory's bold, expressive grain. Clear finishes are especially popular, allowing the natural beauty of the wood to shine without distraction.





**Twin River Cabinets**

📍 5350 Hwy 61 N, Unit 5 / Dock C

White Bear Lake, MN 55110

☎ (651) 560-0123

✉ info@twinrivercabinets.com

🌐 twinrivercabinets.com