



Twin River Cabinets

Built Here. Built Right. Built For Life.



TwinRiverCabinets.com

From The Owner



Since I was a kid, I've always loved building. Whether it was Lincoln Logs or Legos, I was drawn to the challenge of turning simple pieces into something solid and lasting. That same passion eventually led me to woodworking and cabinetry, and it's what still fuels this business today.

Twin River Cabinets was built from the ground up. I'm still involved in every job, and I've built a small team I trust to treat each project like it's their own. Whether we're building a full kitchen or a single cabinet, our focus is the same: honest communication, precise craftsmanship, and a job done right.

This guide was created to walk you through the cabinet design process, from planning your space to choosing hardware and enhancements. We want you to feel confident, informed, and excited about what's possible.

Thanks for letting us be part of your project.

Joe Hanson

Owner, Twin River Cabinets

Why Choose TRC

At TRC, every project is handled by a team that values quality, communication, and getting the details right.

Choosing the right cabinet shop matters. We believe the experience should feel straightforward, collaborative, and genuinely supportive. At TRC, we take the time to understand your project, your style, and the way your home works day to day. We listen first, then guide you through the options that make the most sense for your space and budget.

Our cabinetry is built with quality materials, thoughtful design, and a level of craftsmanship that comes from years of hands-on experience. Every project is approached with care and attention to detail. We don't cut corners, and we don't rush the process. Your cabinetry should feel solid, intentional, and made specifically for your home.

We also believe communication is just as important as construction. You'll always know what to expect, who to contact, and where your project stands. From your first meeting to final installation, our goal is to make the process clear, organized, and genuinely enjoyable.



TRC Collections



CASA COLLECTION

The Casa Collection offers simple, clean paint-grade cabinetry designed for a smooth, timeless finish. Built from durable MDF and available in any Sherwin-Williams color, Casa provides beautiful options without overwhelming choices. It's a dependable starting point for quality and flexibility.



SIGNATURE COLLECTION

The Signature Collection features a range of hardwoods including Alder, Maple, Red Oak, Cherry, and Hickory, with custom stain options to suit any style. Signature gives homeowners the freedom to choose the look and character that's right for their space, and is our most flexible and most popular collection.



LUXE COLLECTION

The Luxe Collection showcases our finest materials: Walnut and White Oak. These premium hardwoods offer natural warmth, clean grain patterns, and refined finishes that elevate any space. Designed for those seeking calm, sculpted, quiet luxury, Luxe cabinetry brings a high end presence to the home.

A Better Way to Build Your Space

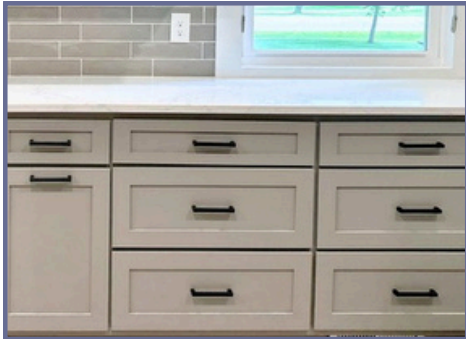
Working with TRC means clear communication, thoughtful design, and a process centered around your goals. We help you choose the collection that fits your space, style, and the way you use your home, making your project simpler, more enjoyable, and tailored to you.

TRC Standards



The TRC Build

Understanding a few fundamentals of cabinet construction can help you feel more confident as you plan your space. TRC builds exclusively with frameless construction, a method chosen for its strength, clean lines, and efficient use of space. Here's a look at what that means for your home and how it shapes the cabinetry we build.



Frameless Cabinets

TRC builds exclusively with frameless cabinetry, valued for strength, clean lines, and efficient use of space. It offers wider drawers, easier access, and a seamless appearance. Known for durability and precision, frameless construction is the TRC standard.



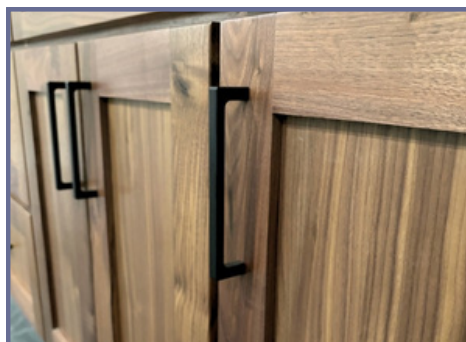
Doors and Drawer Fronts

Your door style sets the tone for the entire room. TRC offers paint-grade MDF for smooth painted finishes and hardwood species for stained or specialty designs. From Shaker to detailed panels, your door choice becomes the defining feature of your space.



Soft-Close Hinges & Glides

Soft-close hardware isn't an upgrade — it's standard. Every cabinet and drawer includes soft-close hinges and glides for quiet operation and everyday performance. Fully adjustable hardware ensures long-lasting alignment and durability.



Hardware Selection

Hardware may be small, but it has major influence on the finished look. Sleek pulls create a modern feel, while warm metals add softness and balance. TRC will help you choose hardware that complements your style and functions well for everyday life.

Cabinet Materials

The materials used to build your cabinets play a big role in how they look, feel, and function. At TRC, we use a combination of durable, high quality materials designed for long lasting strength and reliable performance.

These are the core materials we use throughout our cabinetry, and each one is chosen for its durability, stability, and ability to withstand everyday use.

Solid Wood

Solid wood is used for many door frames, drawer fronts, and decorative elements. Each species brings unique grain, tone, and natural character. Wood responds gently to changes in temperature and humidity, making it warm, authentic, and ideal for stained finishes.

Plywood

Plywood is a strong, stable material commonly used for cabinet boxes. Its layered construction resists warping and provides reliable support for shelving, drawers, and hardware. Plywood offers excellent strength in custom cabinetry.

MDF (Medium-Density Fiberboard)

MDF is smooth, stable, and ideal for painted finishes. Made from compressed wood fibers, it resists expansion and contraction and provides a consistent surface that won't warp or crack easily. MDF is often used for paint-grade doors and panels for a flawless, practical finish.

Melamine (Particle Board Core)

Melamine is used for interior cabinet surfaces. It is durable, easy to clean, and resists moisture better than unfinished wood. Its stability and low maintenance create a long-lasting interior that works well in kitchens, bathrooms, and utility spaces.



TRC Process

Every project starts with a conversation and follows a clear, organized path from design to installation. Our process keeps things simple, transparent, and focused on creating cabinetry for your home and the way you live. Here's what to expect when you work with Twin River Cabinets.



Planning Your Project



Find Your Style

Choosing a cabinetry style is an important first step in shaping the overall feel of your space. Most designs fall into three main categories and understanding these styles can help narrow your preferences. The goal isn't to fit into a box, it's to find the look that feels like home to you.



> Traditional

Traditional design is warm, detailed, and rooted in classic craftsmanship. Cabinet doors often feature raised or recessed panels, and stained finishes highlight natural depth and grain. It's ideal for homeowners who want a timeless, comfortable space with rich materials and a sense of familiarity.

Often aligns with Signature species like Cherry, Alder, or Red Oak.



> Transitional

Transitional design blends traditional elements with clean, contemporary lines. It's flexible, balanced, and one of the most popular approaches for today's homes. Expect simple profiles, subtle detailing, and a calm color palette. This is a great fit if you want something classic yet updated.

Works with all collections depending on finishes and details.



> Contemporary

Contemporary design is clean, streamlined, and intentionally minimal. Finishes are smooth, cabinet profiles are simple, and the overall look relies on strong lines and uncluttered surfaces. This style suits homeowners who prefer a light, airy, modern aesthetic.

Fits well with Casa's painted cabinetry or Luxe's White Oak.

Most homes fall somewhere between these categories. Our design team can help you identify the elements that feel right for your home.

Planning Your Layout

A great layout is one that supports the way you live every day. You don't need a full blueprint to start, just a sense of how your space functions now and how you'd like it to work in the future. These simple considerations can help you prepare for your design consultation and give our team clear direction as we begin shaping your project.

Think About How You Use the Space

Consider your daily rhythm: prepping meals, unloading groceries, hosting guests, cleaning up. Notice what feels smooth and what feels crowded. This helps us identify where more storage, counter space, or organization may be needed.

Identify the High Use Zones

Most kitchens revolve around a few main areas: cooking, cleaning, prep, and storage. You don't need to map them out precisely, but noticing where activities naturally fall can guide smarter cabinet placement and improve workflow.

Plan with Traffic Flow in Mind

Layouts work best when they're comfortable to move through. Think about shared pathways, who uses the kitchen when, and where bottlenecks occur. Even small shifts, like adjusting appliance placement or widening a run, can make daily life feel easier.

Consider Openness vs. Containment

Some homeowners prefer clear, open counters. Others like dedicated "stations" for coffee, baking, kids' items, or appliances they use often. There's no right or wrong, but your preferences help us design a layout that supports your routine.

Balance Storage and Surfaces

Drawers, tall cabinets, open shelves, and pantry units all serve different purposes. The right layout balances storage with usable surface area. If you cook often, you may need more prep zones; if you use fewer cabinets, you may prefer more drawers. Thinking through these details helps your final layout feel personalized and efficient.

A thoughtful layout is the foundation of a space that's easy to use and enjoyable to live in. The TRC team is here to help you build a layout that truly works for your home.



Appliances

A few key appliance decisions help set the direction for your layout and cabinetry design.

What We Need to Know Early

A few early decisions give us enough direction to begin planning:

- Will appliances stay where they are, or be relocated?
- Are you choosing a standard range, or switching to a cooktop and wall oven?
- Will the refrigerator be standard-depth or counter-depth?
- Are you considering specialty items such as a drawer microwave, beverage fridge, or double oven?

Approximate appliance sizes help us plan cabinet runs, clearances, and workflow. Final dimensions come later.

How Appliances Shape Your Layout

Appliances influence more than just openings in your cabinetry. They affect:

- traffic flow and walking paths
- how cooking, prep, and cleanup zones function
- ventilation and hood sizing
- counter space and landing areas
- ergonomic placement of drawers and shelving

Knowing your appliance direction early ensures the layout supports everyday use and feels natural from the moment you walk in.

If You're Unsure, We'll Help You Decide

Most homeowners don't select appliances until after the initial layout conversation, and that's perfectly normal. Inspiration photos, rough ideas, or simple preferences (gas vs. electric, wider vs. narrower, built-in vs. standard) are more than enough to get started.

We'll guide you through the rest.



Appliance choices influence cabinet design, traffic flow, and overall layout.

Storage Planning

Thoughtful storage planning helps your kitchen function smoothly and stay organized. Here are a few things to consider as we design your space.

Think About What You Reach for Most

Daily use items should be easiest to access. Notice what you reach for constantly, and where you store them. This helps us place drawers, shelves, and cabinets to feel intuitive.

Drawers vs. Doors

Many homeowners prefer drawers because they keep items visible and accessible. Cabinets work well for taller items or larger storage zones. A balanced mix creates a comfortable layout.

Plan for the “Hidden” Items

Some things are best stored out of sight such as cleaning supplies, recycling, pet items, bulk goods, or small appliances. If these clutter your counters, we can design a dedicated space.

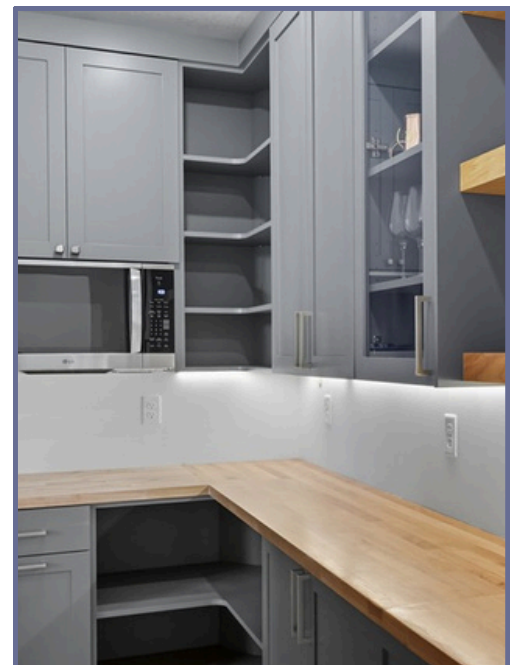
Consider How You Cook and Entertain

Your routines guide your storage needs. If you bake often, you may prefer deep drawers near the oven for mixing bowls or baking tools. If you entertain regularly, serving zones or storage near the dining area can make gatherings feel smoother. And if you meal prep, extra counter-adjacent drawers often work best for efficiency. Small details like these help shape a layout that feels naturally comfortable.

Make Space for the Future

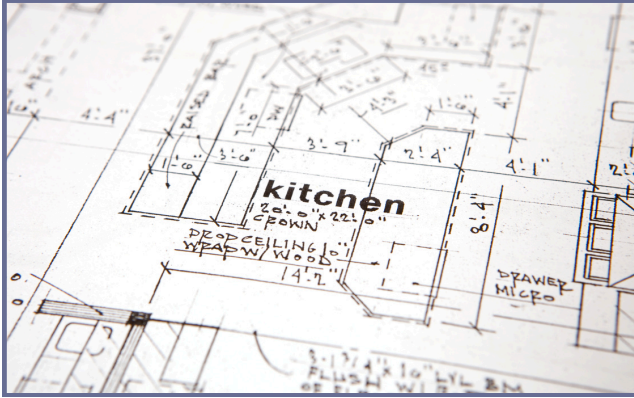
Your storage needs will evolve over time. Consider how your home may change such as kids becoming more independent, new hobbies that require space, hosting more gatherings, or future appliances and tools you may add. Planning with a bit of flexibility ensures your cabinetry continues to support you for years to come.

Good storage makes daily routines easier and keeps your space feeling calm and organized. We'll help you choose the right combination of drawers, cabinets, and features to make your home work beautifully for you.



Measurements & Site Details

Helpful Measurements to Have



These early details help us understand your space and identify design opportunities before we begin planning:

- general ceiling height
- rough lengths where cabinetry may go
- window and doorway locations
- approximate sink and plumbing
- any structural elements that could influence the layout

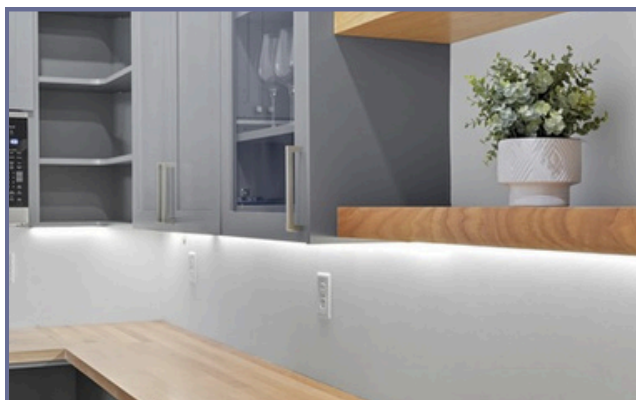
What TRC Measures for You



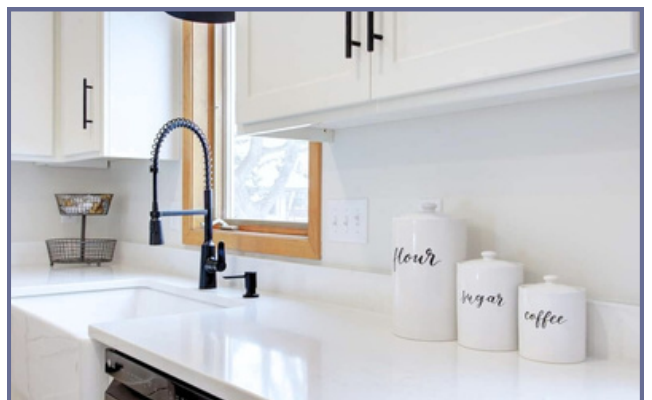
Once your design is underway, TRC handles all final, installation ready measurements to ensure your cabinetry fits exactly. We verify:

- exact wall and cabinetry dimensions
- appliance openings and clearances
- hood and venting requirements
- trim, filler, and molding needs
- electrical, plumbing, or structural considerations

A Note on Electrical & Plumbing



If you're considering moving plumbing, outlets, or venting, let us know early. You don't need final plans but knowing your intentions helps us design cabinetry that accommodates those updates and keeps the project moving smoothly.



Details & Enhancements



How Design Shapes Cabinetry

The right design choices make your cabinetry feel balanced, intentional, and visually comfortable. Before selecting enhancements like shelving, a range hood, or custom storage features, it helps to understand a few design principles that guide how these elements come together.

Start with a Focal Point

Every great space has one feature that naturally draws attention such as a range hood, window, tall pantry cabinet, or standout island detail. Identifying your focal point early helps determine where enhancements like shelving, lighting, or paneling will create the most impact.



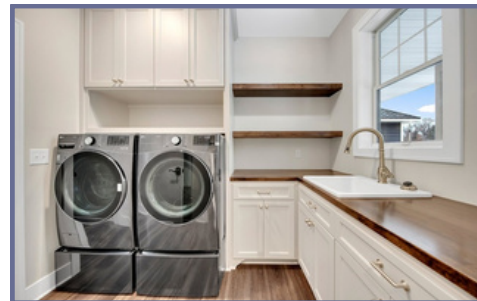
Function Leads the Design

Enhancements should support the way you use your home. Whether that means maximizing prep space, simplifying cleanup, or improving everyday organization, functional elements such as pull-outs, custom inserts, or additional drawers help the design work with you.



Balance Visual Weight

Cabinetry looks best when the space feels balanced. Open shelves can soften a wall of cabinetry, while vertical elements like tall cabinets or a feature hood create structure. Thoughtful placement of enhancements keeps the room feeling calm and cohesive.



Create Flow Through the Space

The way you move through a room should feel natural. Features such as appliance garages, pull-outs, or designated zones for cooking and cleanup help maintain clear pathways and reduce clutter, making the room easier to use day to day.

Custom Details

Cabinetry becomes functional when details support the way you live. Whether you want easier access to everyday items, more organization, or a unique design feature that anchors the room, TRC offers a wide range of enhancements that can be added to any of our collections. These upgrades help create a space that's beautiful and tailored to you.

Designed to Enhance Any Style

Enhancements aren't just functional, they also help shape the overall look and feel of your home. A custom range hood can anchor the room as a strong focal point, while open shelving adds warmth and breathing space. Whether your style leans traditional, transitional, or contemporary, these details can be tailored to fit your aesthetic. And because every enhancement is available across Casa, Signature, and Luxe Collections, you can add the same level of convenience, organization and style to any space.



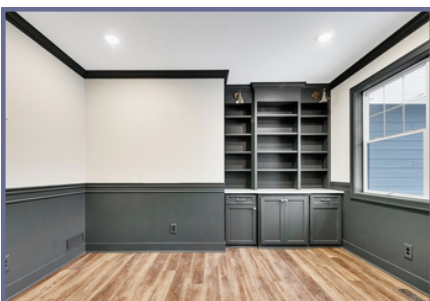
> Custom Range Hoods

Your range hood can serve as the centerpiece of your kitchen — elegant, bold, or quietly refined. Each one is built to order, shaped, sized, and finished to complement your cabinetry. From classic wood trim to sleek modern panels, our hoods are shaped and finished to complement your cabinetry, creating a cohesive, intentional focal point.



> Floating Shelves

Open shelving adds warmth, balance, and visual breathing room to your cabinetry. Perfect for displaying decor, everyday dishes, or glassware, floating shelves are a beautiful way to personalize your space. Every shelf is built with the same precision as your cabinets, ensuring seamless alignment, durability, and finish consistency.



> Custom Storage Solutions

Signature cabinetry extends far beyond the kitchen. From mudrooms and laundry rooms to home offices and built-in storage, each project is tailored to fit your space. Whether you need a wall of storage with integrated seating, a built-in desk, or a sleek utility area, each piece is made to bring order and style to the spaces you use most.

Storage & Everyday Convenience



Pull-Out Trash & Recycling Cabinets

Built-in trash storage keeps your kitchen tidy with smooth glides and hidden bins for clean everyday use.



Utensil and Knife Drawers

Custom drawer inserts keep utensils organized and easy to reach, creating a tidy, efficient prep space.



Cooking Utensil Organizer

Deep pull-outs store ladles, spatulas, and tools upright, offering organization for busy kitchens.



Spice Drawers or Racks

Smart spice storage keeps jars visible and organized so cooking feels easier, cleaner, and more enjoyable.



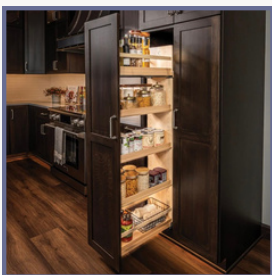
Corner Pull-Out Shelves

Corner pull-outs maximize hard-to-reach spaces with rotating trays and shelves to keep items accessible.



Baking Sheet & Cutting Boards

Vertical dividers keep baking sheets and cutting boards upright and organized, protecting from scratches.



Pantry Pull-Out Cabinets

Full extension pull-outs keep pantry staples in reach, creating an organized space for daily use.



Garage & Storage Cabinets

Appliance garages store bulky or heavy items and reduce counter clutter while still easy to reach.

*These features turn everyday routines into smoother, easier moments.
Each option is designed to fit seamlessly into your layout.*

Your Next Steps





Next Steps

You're almost there! Now that you've explored some of the basics of cabinetry and design, it's time to start shaping your own space.

Use the next two pages to jot down ideas, sketch your layout, or make a list of questions you'd like to ask. Whether it's measurements, appliance notes, or inspiration you've seen online, this is the perfect place to gather your thoughts before we meet. Bringing your notes to your consultation helps us understand your vision, answer questions more clearly, and make the most of our time together.



Ready to Move Forward?

If you've already reached out, we'll be in touch soon to schedule your consultation. If not, we invite you to contact us to answer questions, talk through your ideas, and help you take the next step toward a space you'll love!



Twin River Cabinets

📍 5350 Hwy 61 N, Unit 5 / Dock C

White Bear Lake, MN 55110

☎ (651) 560-0123

✉ info@twinrivercabinets.com

🌐 twinrivercabinets.com

Project Planning Checklist

Getting started on your cabinetry project is exciting and a little preparation goes a long way. Use this checklist to help organize ideas, confirm details, and make design decisions with confidence.

1. Gather Inspiration

- ☐ Save photos or examples of spaces you love
 - ☐ Identify what draws you in — color, layout, or overall feel
 - ☐ Note features you'd like to include (islands, glass doors, pullouts, etc.)
-

2. Measure & Plan Your Space

- ☐ Note ceiling height, window placement, and door swings
 - ☐ Identify existing electrical, plumbing, or vent locations
 - ☐ Take note of any fixed elements that can't be moved easily
-

3. Define Your Needs

- ☐ Think about what works, and what doesn't, in your current space
 - ☐ List daily habits (meal prep, entertaining, storage needs)
 - ☐ Decide on special features (pantry pullouts, deep drawers, spice racks)
-

4. Choose Your Style

- ☐ Explore cabinet styles — Traditional, Transitional, or Contemporary
 - ☐ Consider finishes, hardware, and countertop pairings
 - ☐ Decide on your focal point or standout feature
-

5. Confirm Your Details

- ☐ Select your preferred cabinetry Collection — Casa, Signature, or Luxe
 - ☐ Choose wood species or paint colors (if applicable)
 - ☐ Review appliance specs for accurate fit
-

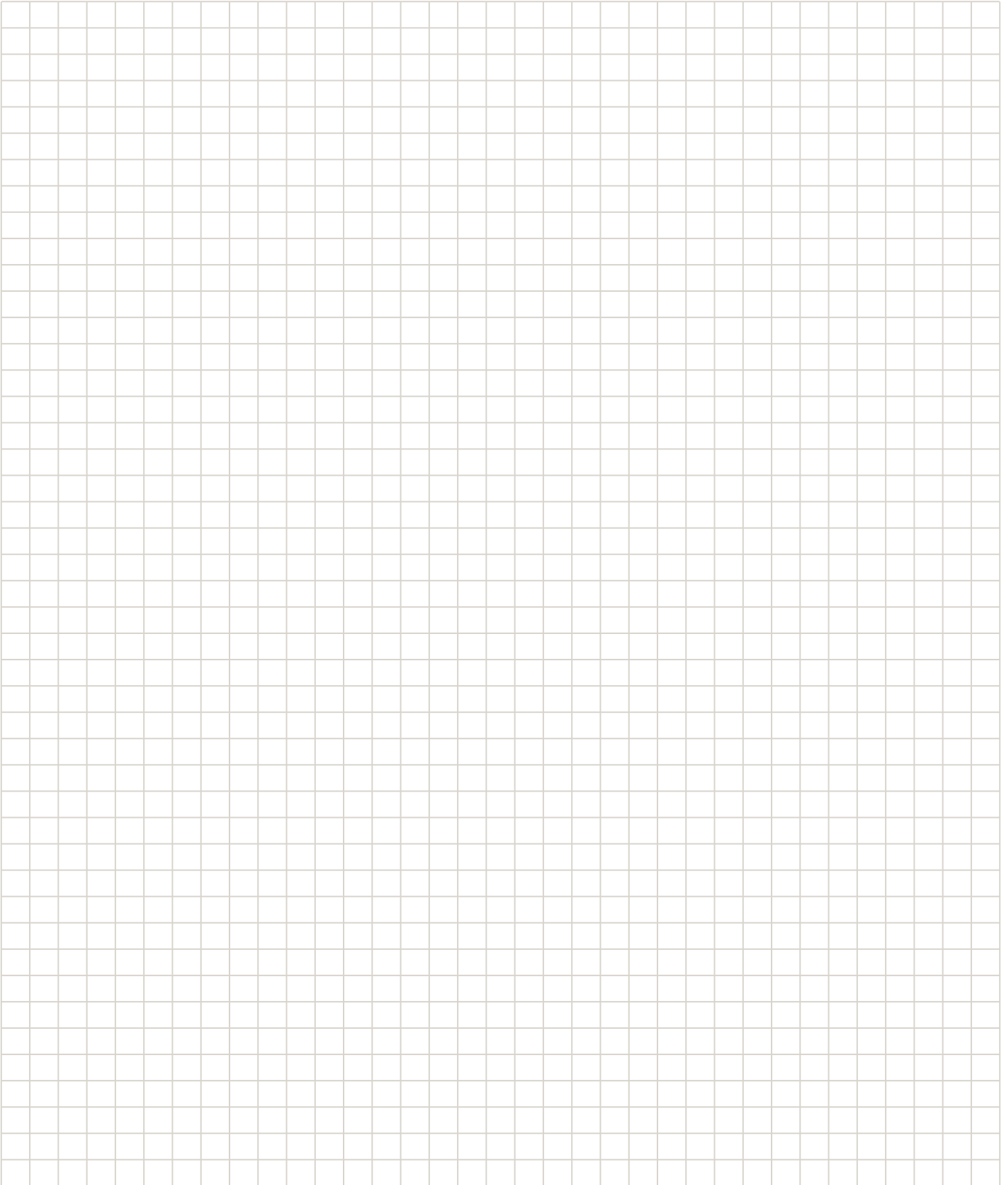
6. Final Steps

- ☐ Review and approve your design
 - ☐ Confirm all selections and pricing
 - ☐ Schedule delivery and installation
-

Tip:

Keep all notes, samples, and measurements in one place. It will make decision making smoother and ensure every detail is consistent, start to finish.

My Notes





Twin River Cabinets

📍 5350 Hwy 61 N, Unit 5 / Dock C
White Bear Lake, MN 55110

☎ (651) 560-0123

✉ info@twinrivercabinets.com

🌐 twinrivercabinets.com