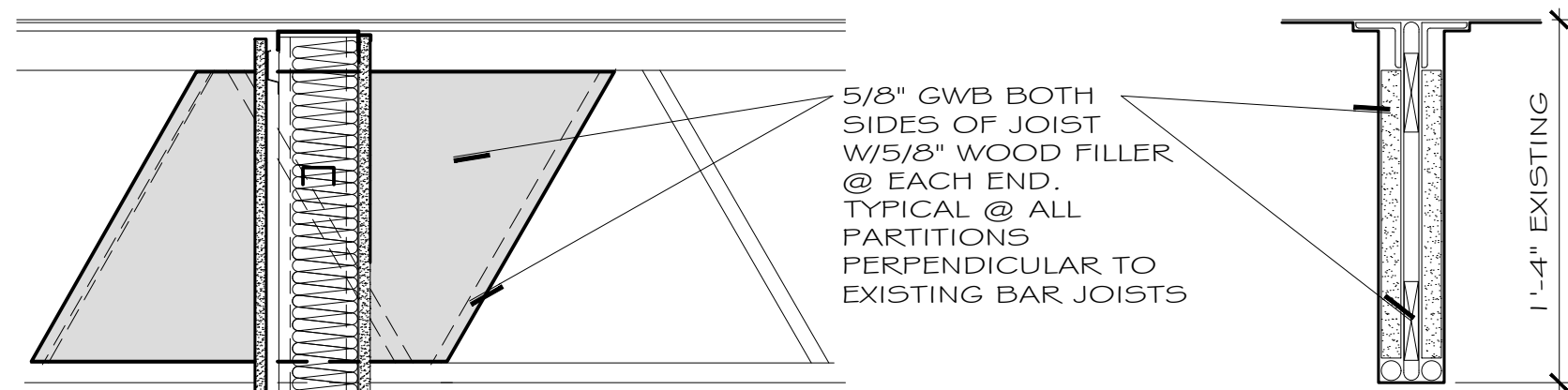
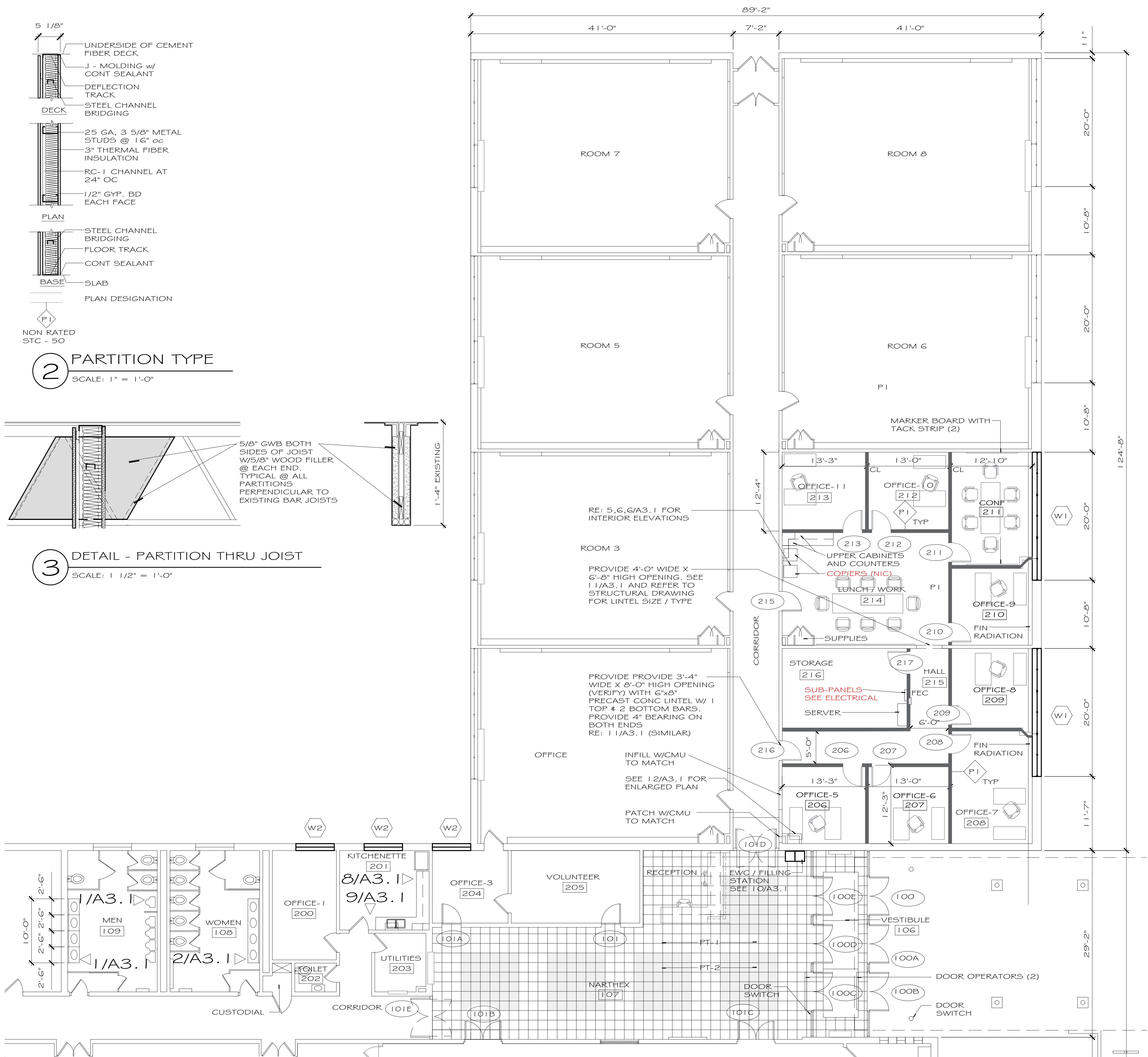


NON RATED
STC - 50

2 PARTITION TYPE
SCALE: 1" = 1'-0"



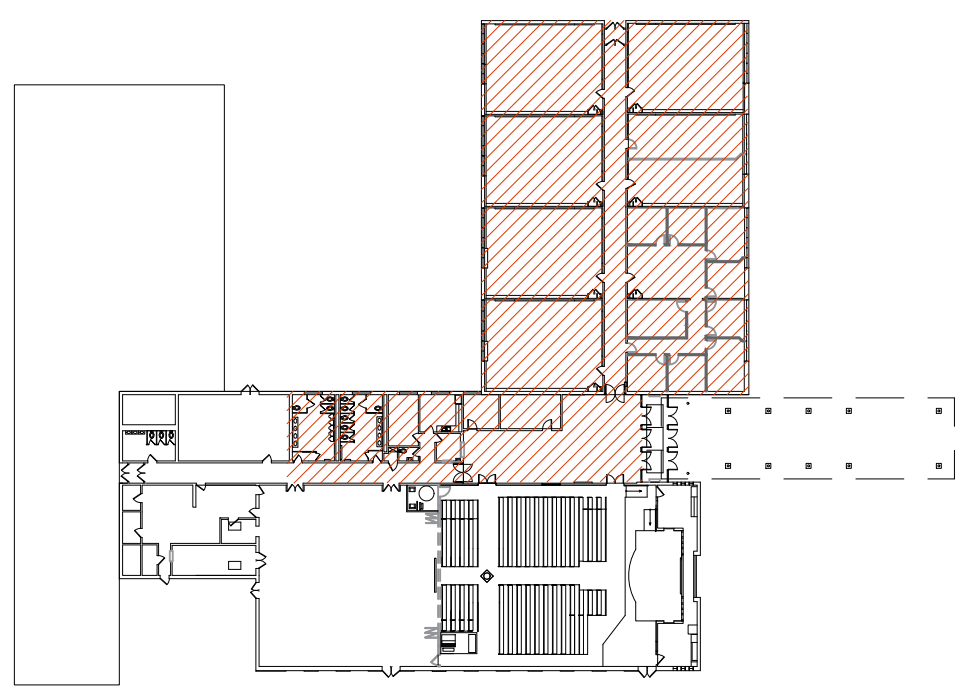
3 DETAIL - PARTITION THRU JOIST
SCALE: 1 1/2" = 1'-0"



1 NARTHEX, OFFICE AND CLASSROOMS
SCALE: 1/8" = 1'-0"

FLOOR PLAN NOTES

- 1 FIELD VERIFY ALL DIMENSIONS AND CONDITIONS PRIOR TO START OF WORK.
- 2 ALL WOOD BLOCKING AND FURRING SHALL BE FIRE RETARDANT TREATED.
- 3 PROVIDE FIRESTOPPING AT PERIMETER OF PENETRATIONS THROUGH ALL FIRE AND SMOKE RATED ASSEMBLIES. COMPLY WITH ASTM AND UL REQUIREMENTS. PROVIDE FIREBLOCKING IN ALL CONCEALED SPACES TO RESIST THE PASSAGE OF FLAME AND SMOKE. PROVIDE FIRESTOPPING AT NEW AND EXISTING RATED PARTITIONS TO REMAIN.
- 4 ALL PARTITIONS SHALL EXTEND FROM FLOOR TO UNDERSIDE OF CONCRETE DECK.
- 5 SEE FINISH (PATCH AND REPAIR) NOTES ON SHEET A2.



KEY PLAN

Revisions

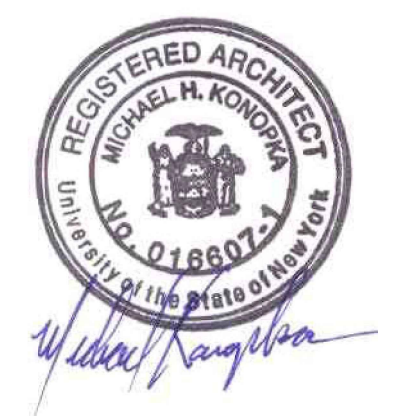
Konopka Architecture, PC
1501 East Avenue, Suite 1
Rochester, New York 14610
585.271.3480
www.konopkaarchitecture.com

SAINT MARIANNE COPE ROMAN CATHOLIC PARISH
Love God. Live in Faith.

GUARDIAN ANGELS CAMPUS - CANOPY AND ALTERATIONS

206 E HENRIETTA RD,
ROCHESTER, NY 14623

SEAL



COPYRIGHT © 2020

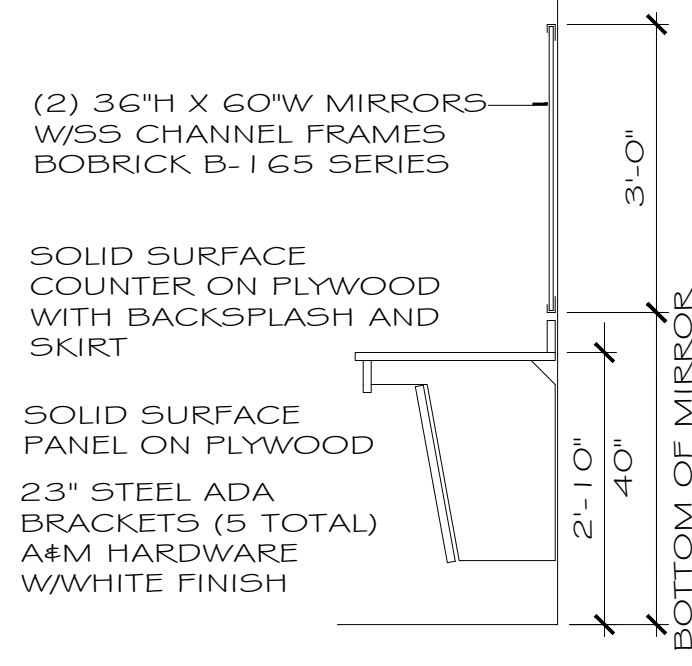
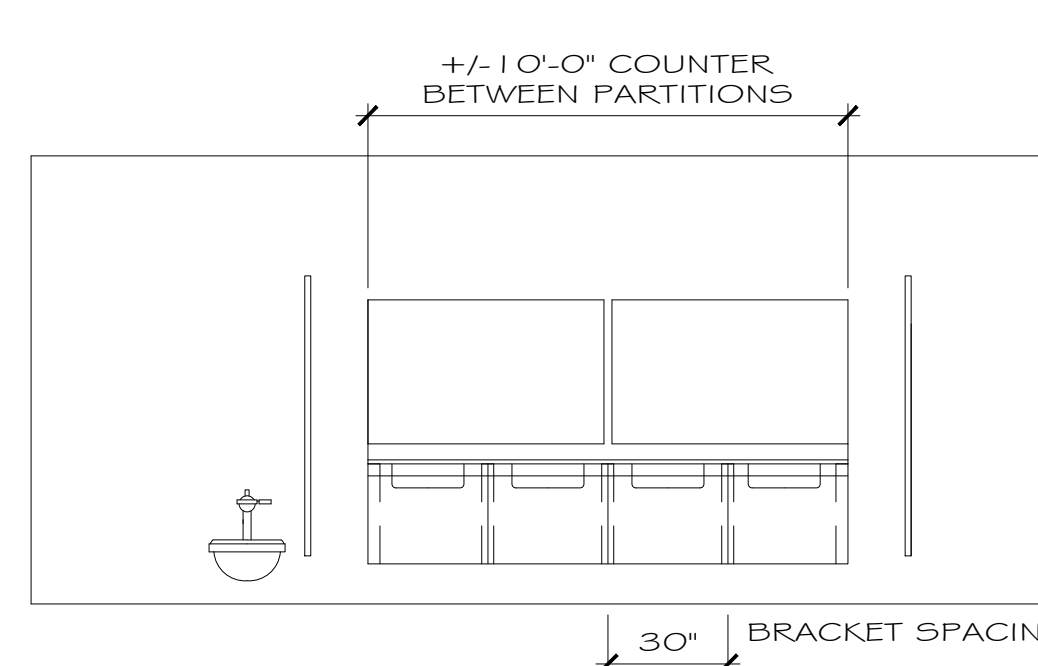
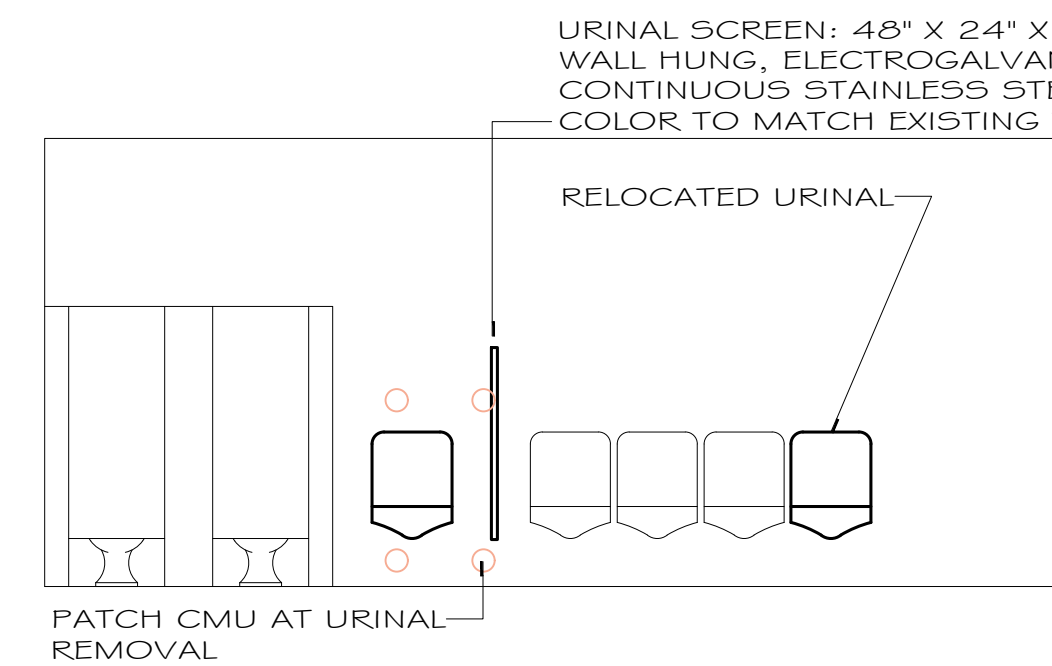
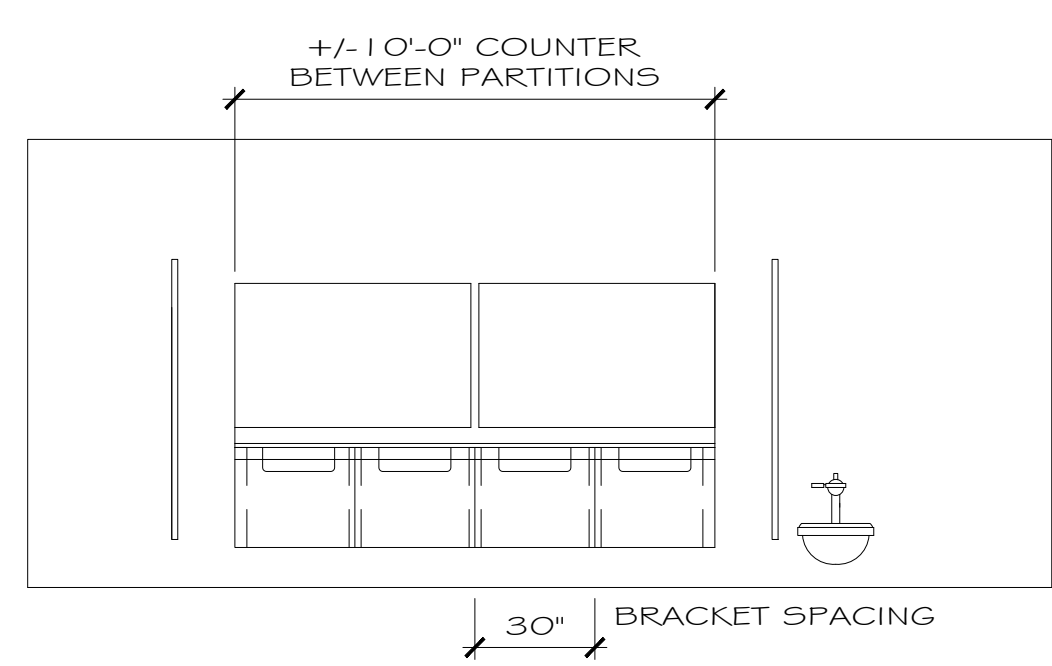
IT IS A VIOLATION OF THE LAW FOR ANY PERSON, UNLESS ACTING UNDER THE DIRECTION OF A LICENSED ARCHITECT, TO ALTER ANY ITEM ON THIS DOCUMENT IN ANY WAY. IF ANY ITEM ON THIS DOCUMENT IS ALTERED, THE ALTERING ARCHITECT SHALL AFFIX TO THAT ITEM HIS OR HER SEAL, AND THE NOTATION "ALTERED BY" FOLLOWED BY HIS OR HER SIGNATURE, THE DATE, AND A SPECIFIC DESCRIPTION OF THE ALTERATION.

DRAWING TITLE

PARTIAL FLOOR PLAN,
PARTITION TYPE AND
NOTES

SCALE:
PROJECT NO.: 19.02 OC5
DATE: NOVEMBER 2020

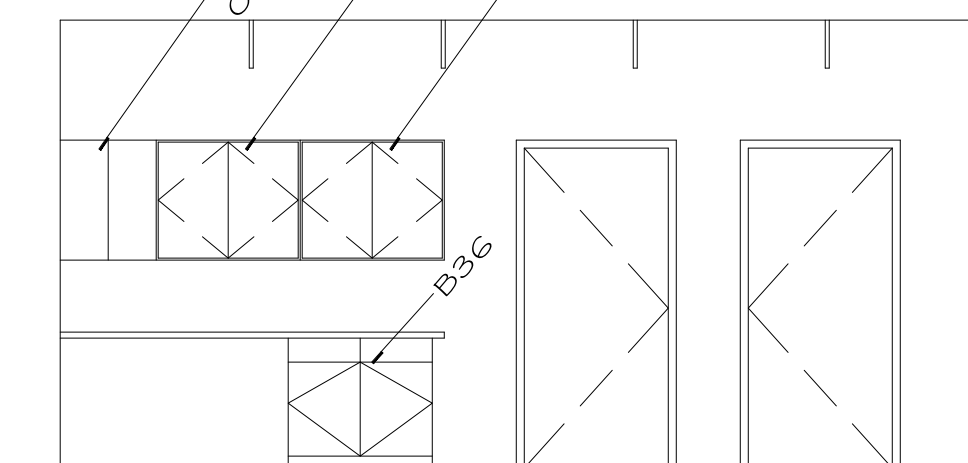
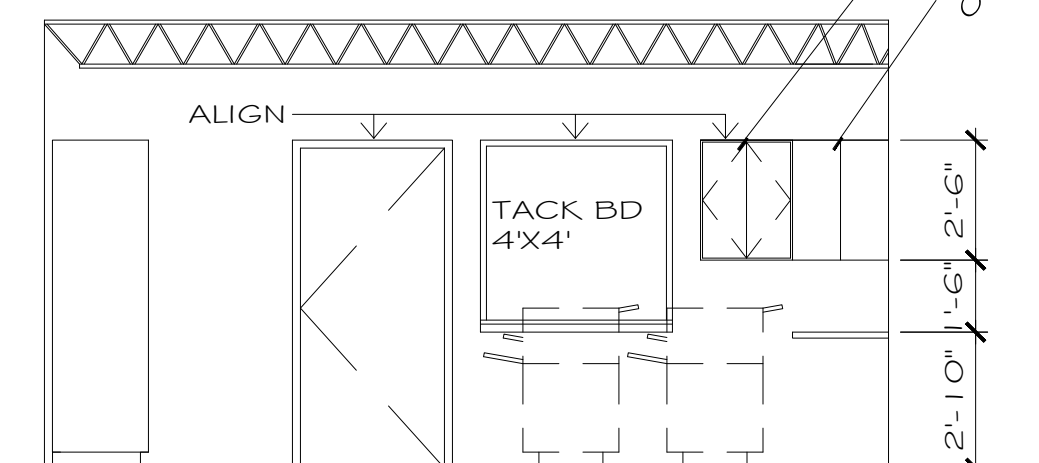
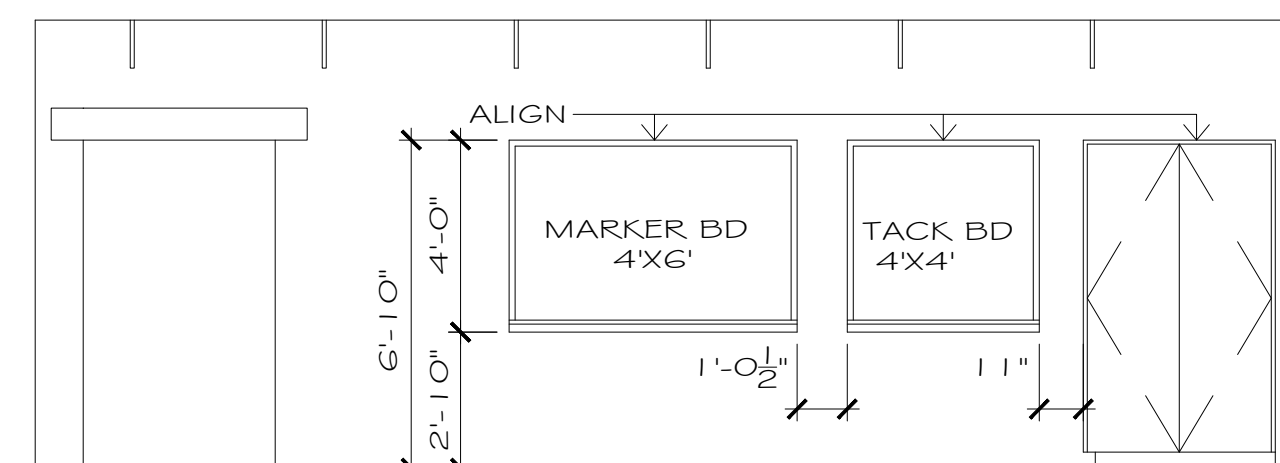
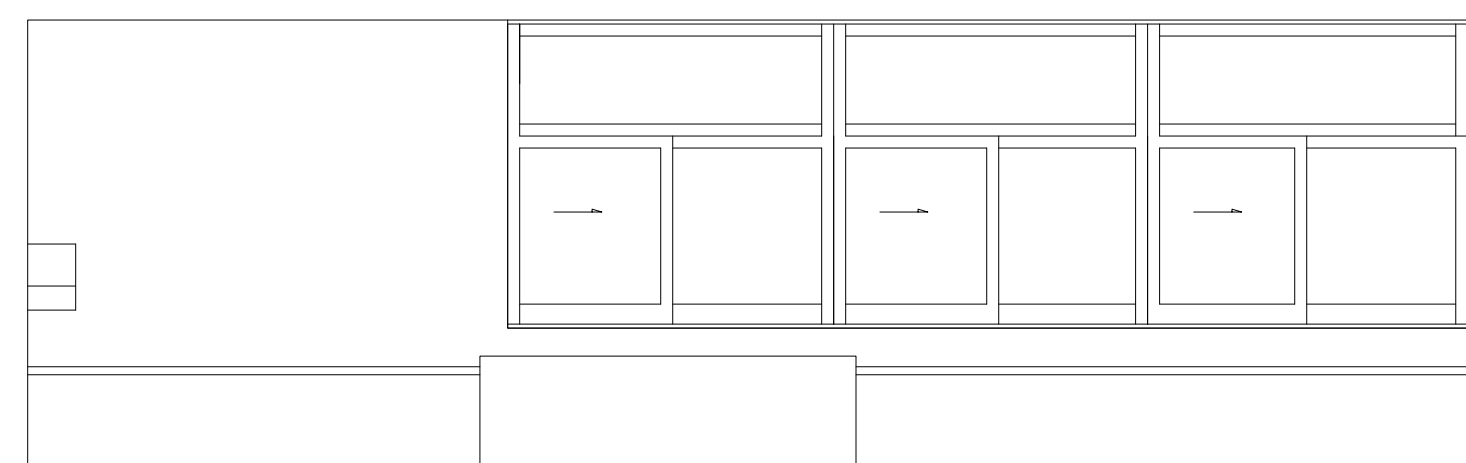
SHEET NO.:



1 INTERIOR ELEVATION - MEN 109
SCALE: 1/4" = 1'-0"

2 INTERIOR ELEVATION - WOMAN 108
SCALE: 1/4" = 1'-0"

3 SECTION
SCALE: 1/2" = 1'-0"

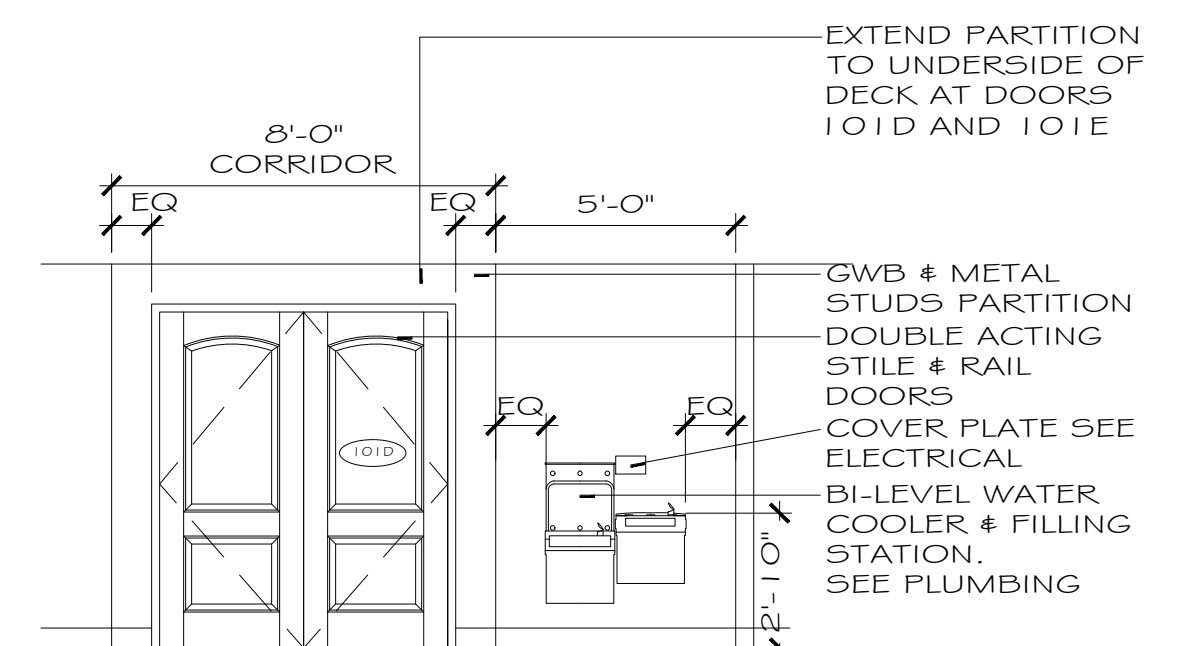
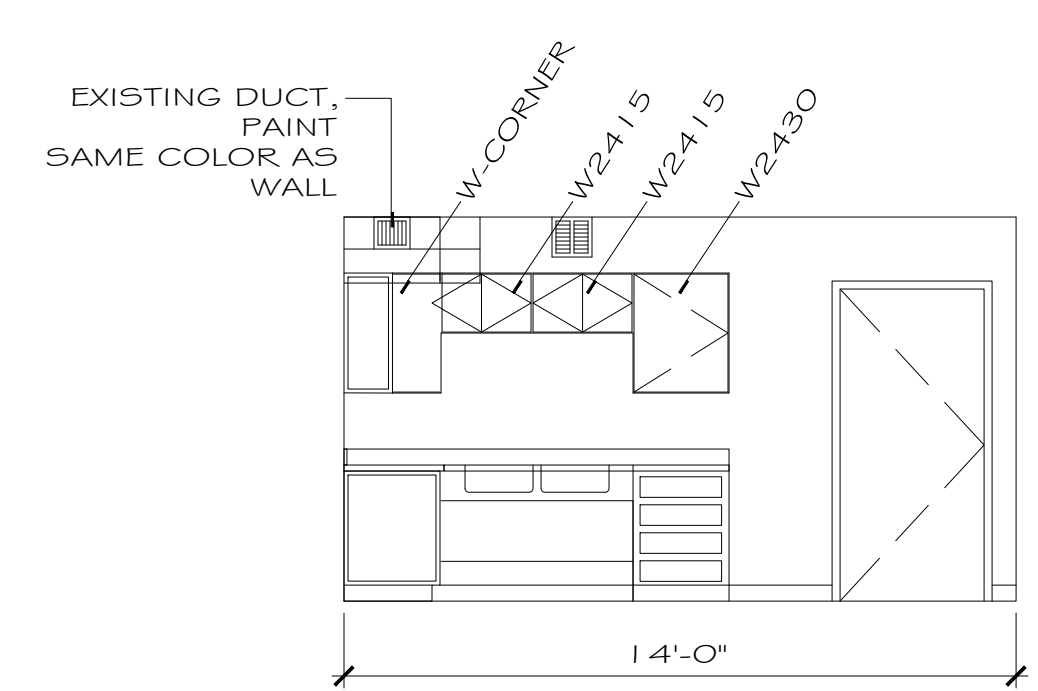
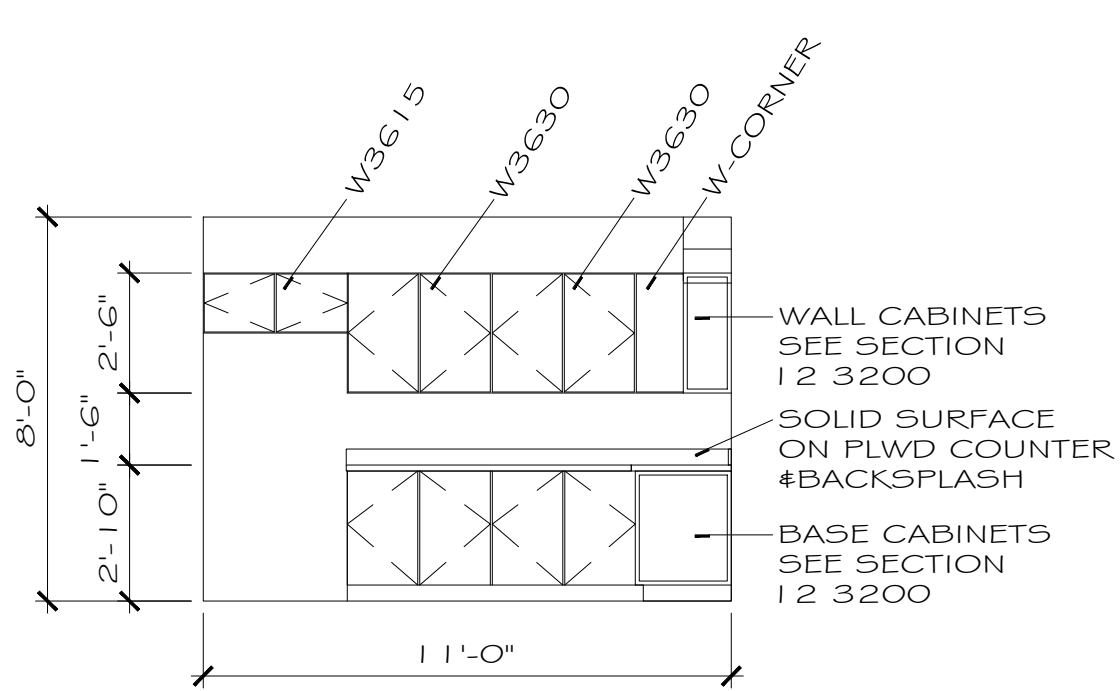


4 INT ELEVATION
SCALE: 1/4" = 1'-0"

5 INT ELEVATION (2 | 4)
SCALE: 1/4" = 1'-0"

6 INT ELEVATION (2 | 4)
SCALE: 1/4" = 1'-0"

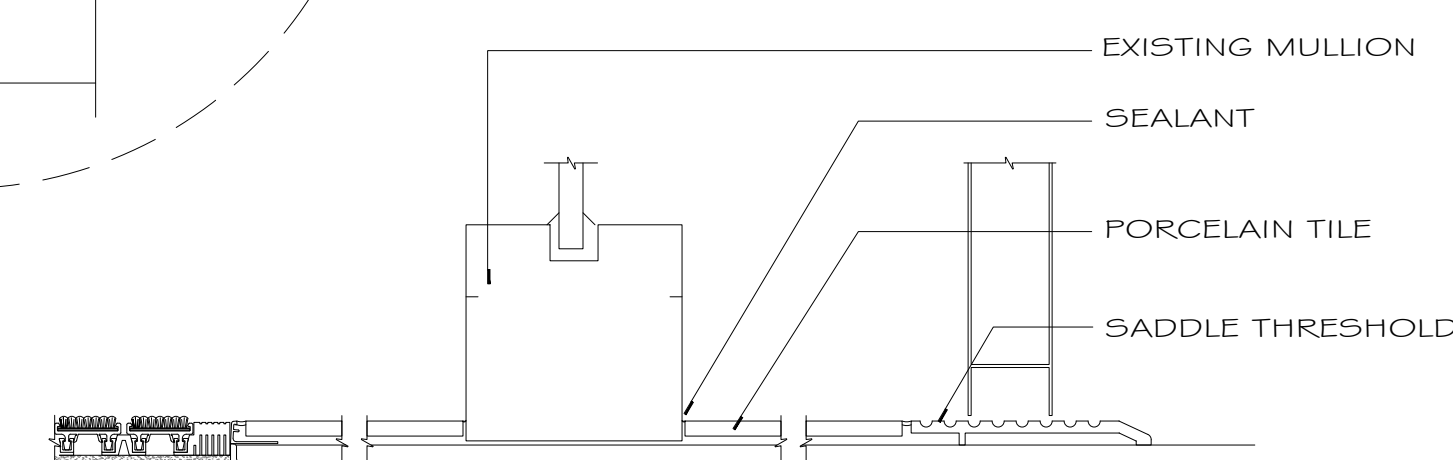
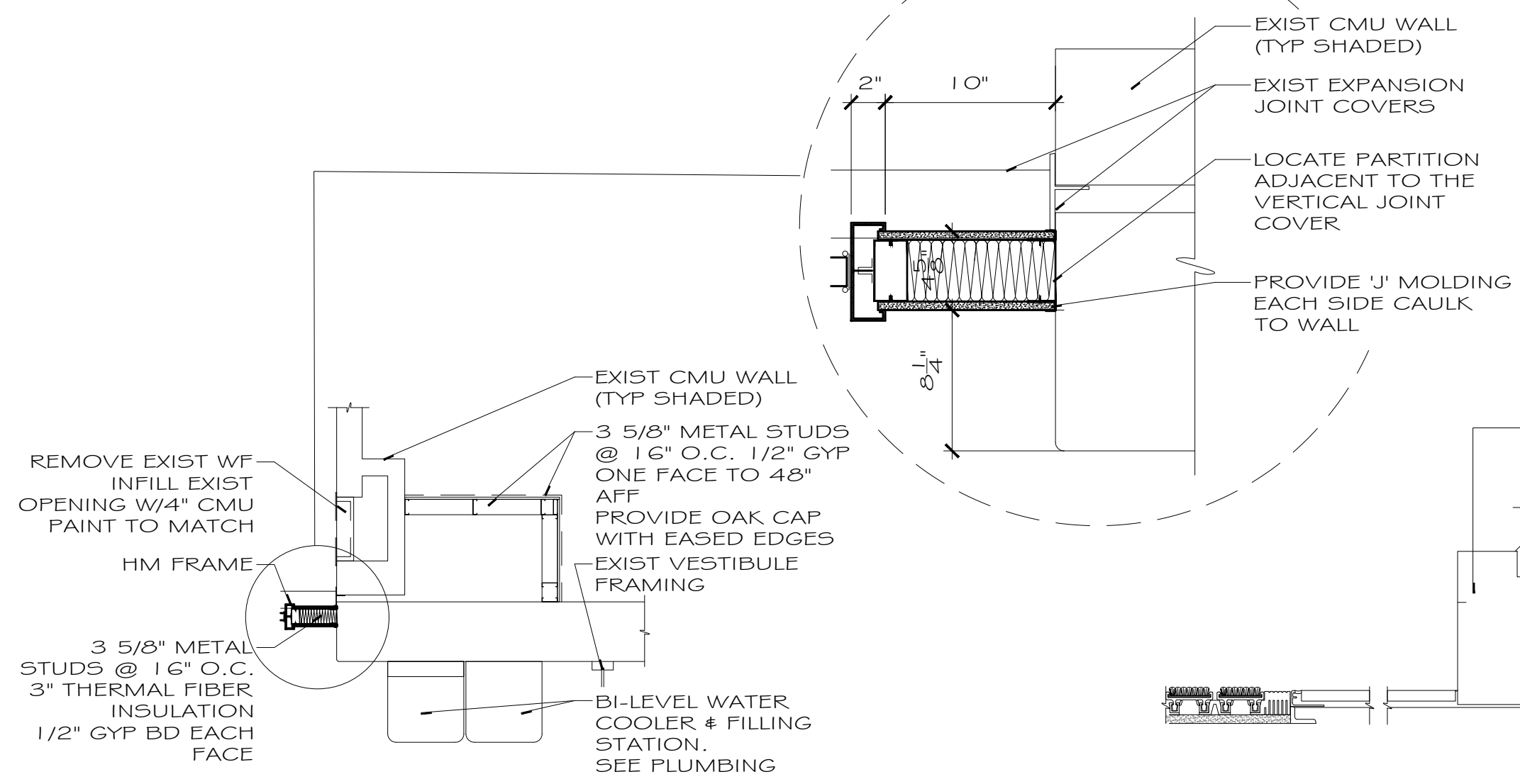
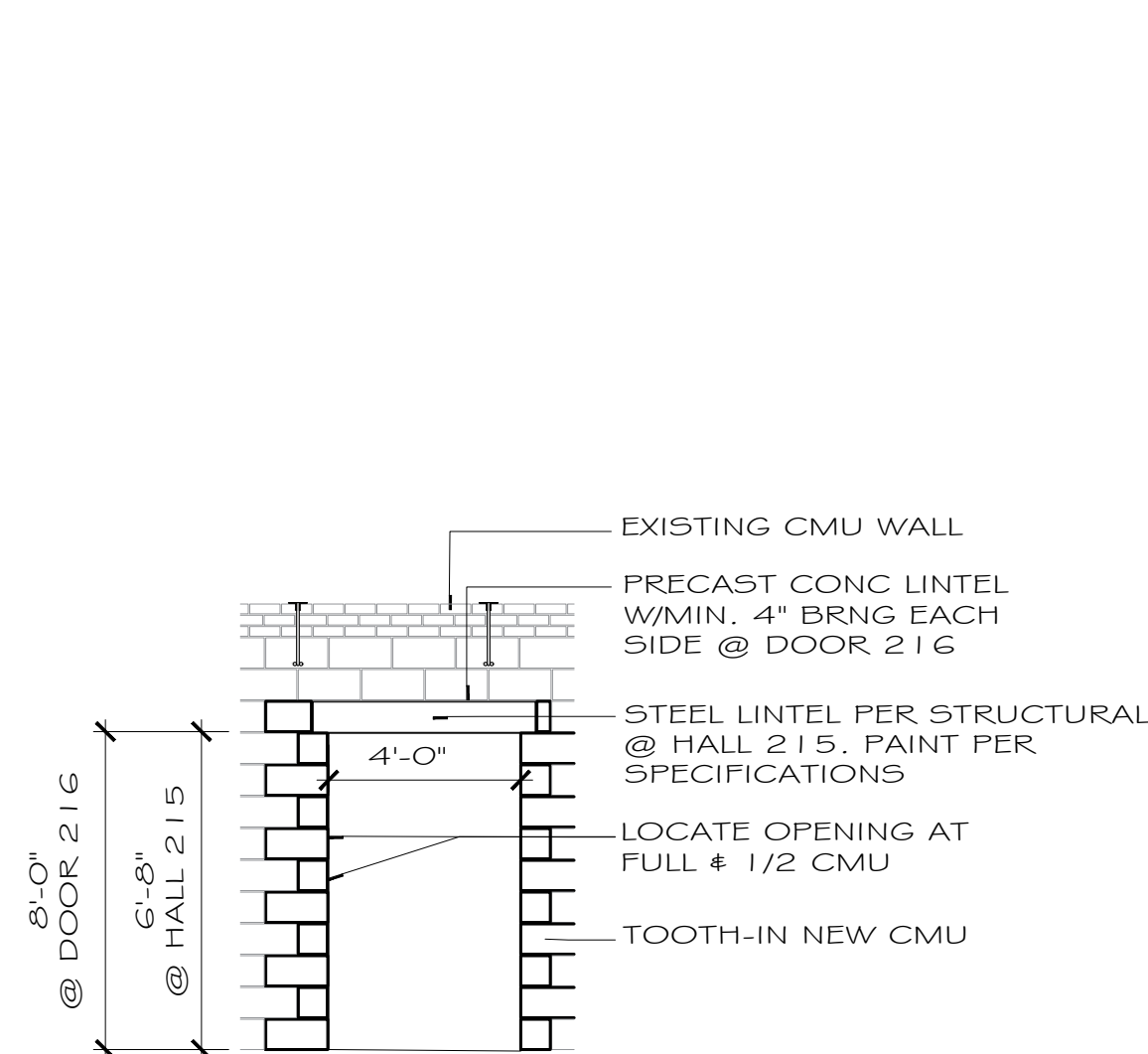
7 INT ELEVATION (2 | 4)
SCALE: 1/4" = 1'-0"



8 INTERIOR ELEVATION - KITCHEN 201
SCALE: 1/4" = 1'-0"

9 INTERIOR ELEVATION - KITCHEN 201
SCALE: 1/4" = 1'-0"

10 INTERIOR ELEVATION - EWC
SCALE: 1/4" = 1'-0"

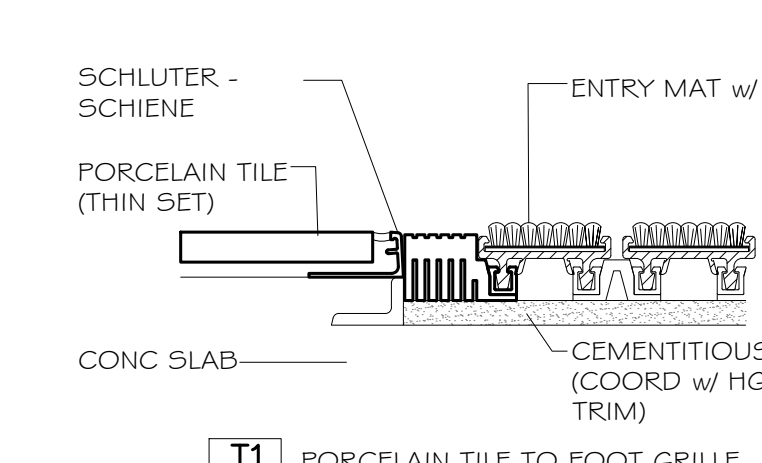
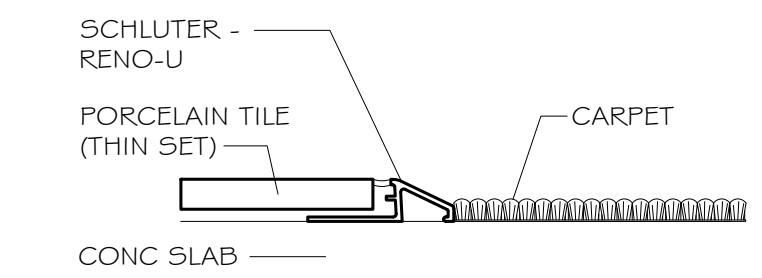
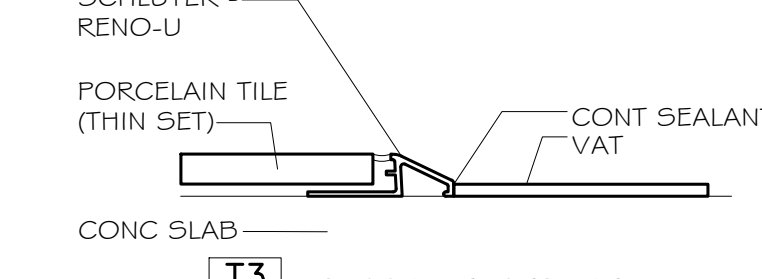
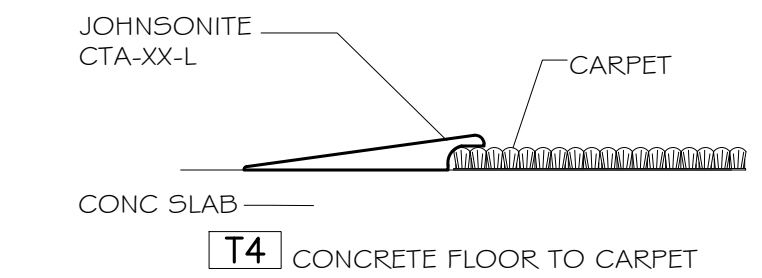
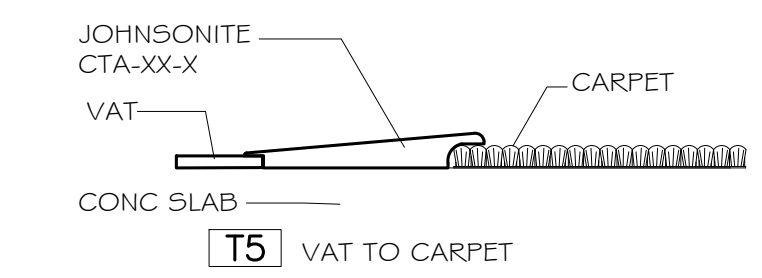


11 INTERIOR ELEVATION - OPENING @ HALL 215
SCALE: 1/4" = 1'-0"

12 ENLARGED PLAN - EWC
SCALE: 3/8" = 1'-0"

13 FLOOR TRANSITION AT VESTIBULE
SCALE: 3" = 1'-0"

14 FLOOR TRANSITIONS
SCALE: 6" = 1'-0"



Revisions

Konopka Architecture, PC
1501 East Avenue, Suite 1
Rochester, New York 14610
585.271.3480
www.konopkaarchitecture.com

SAINT MARIANNE COPE ROMAN CATHOLIC PARISH
Love God. Live in Faith.

GUARDIAN ANGELS CAMPUS - CANOPY AND ALTERATIONS

206 I E HENRIETTA RD, ROCHESTER, NY 14623

SEAL



COPYRIGHT © 2020

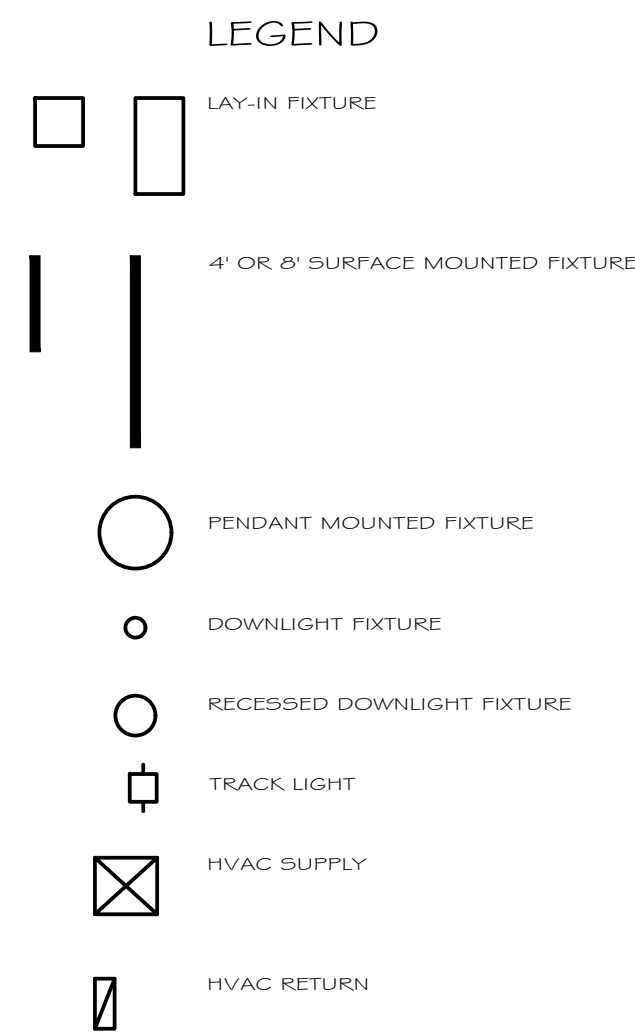
IT IS A VIOLATION OF THE LAW FOR ANY PERSON, UNLESS ACTING UNDER THE DIRECTION OF A LICENSED ARCHITECT, TO ALTER ANY ITEM ON THIS DOCUMENT IN ANY WAY. IF ANY ITEM ON THIS DOCUMENT IS ALTERED, THE ALTERING ARCHITECT SHALL AFFIX TO THAT ITEM HIS OR HER SEAL, AND THE NOTATION "ALTERED BY" FOLLOWED BY HIS OR HER SIGNATURE, THE DATE, AND A SPECIFIC DESCRIPTION OF THE ALTERATION.

DRAWING TITLE

INTERIOR ELEVATIONS, SECTIONS AND DETAILS

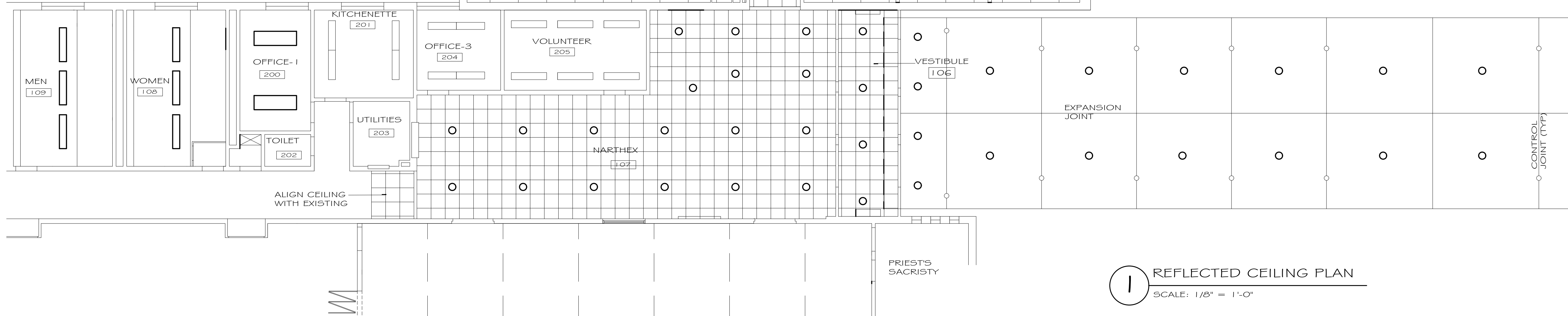
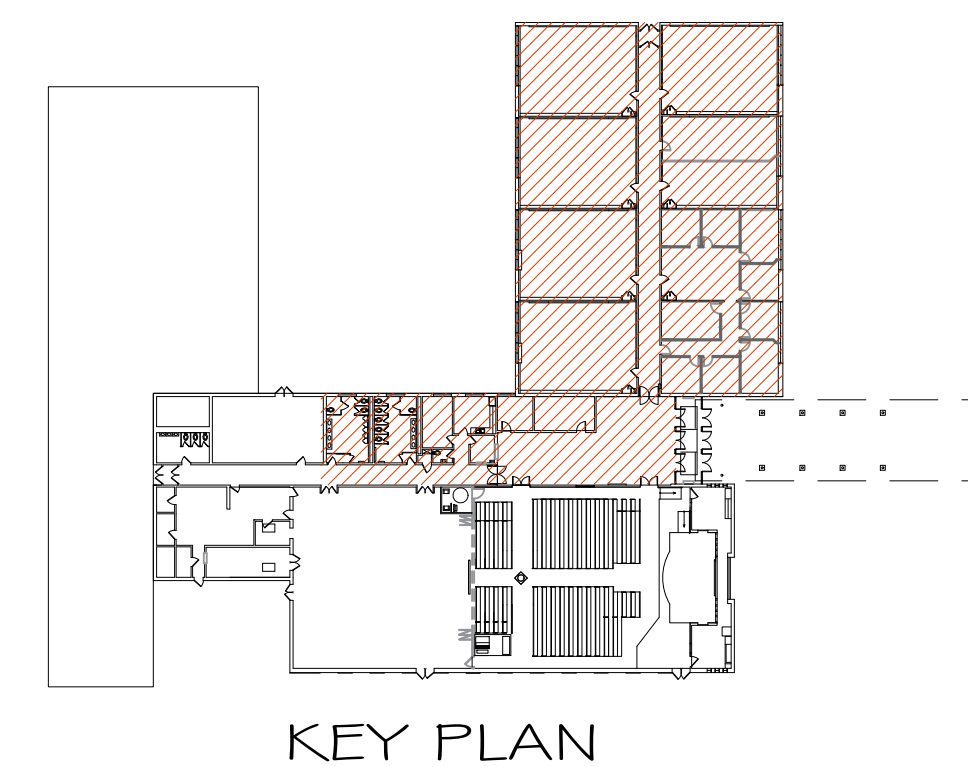
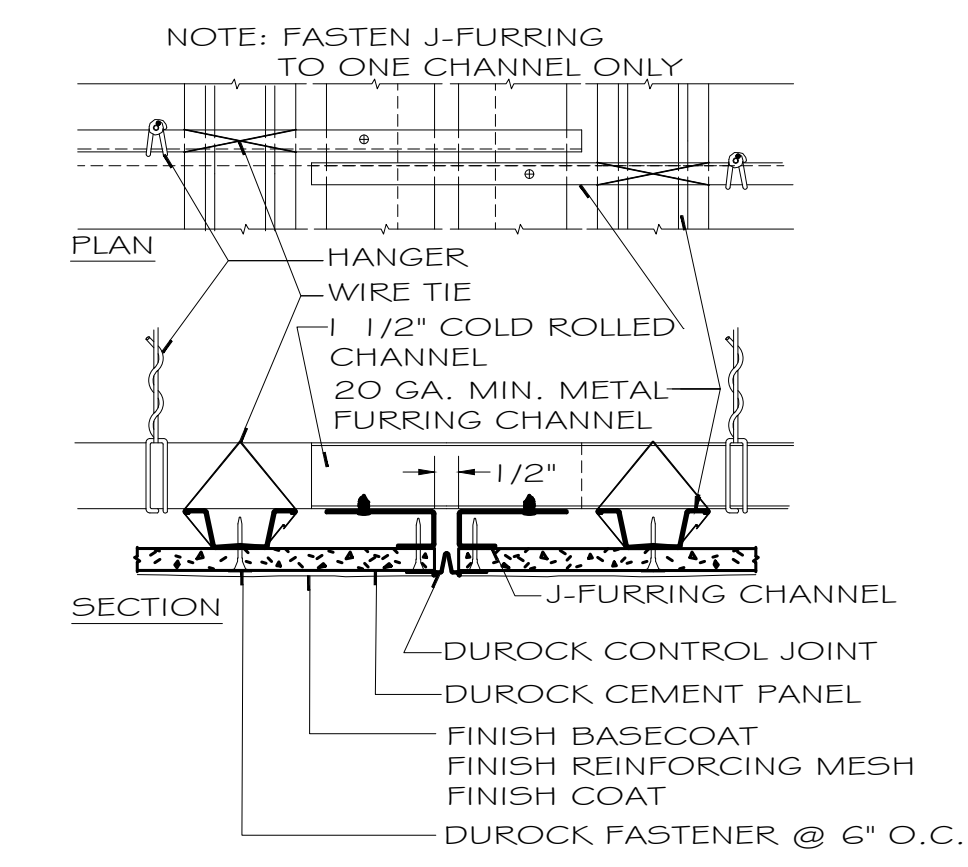
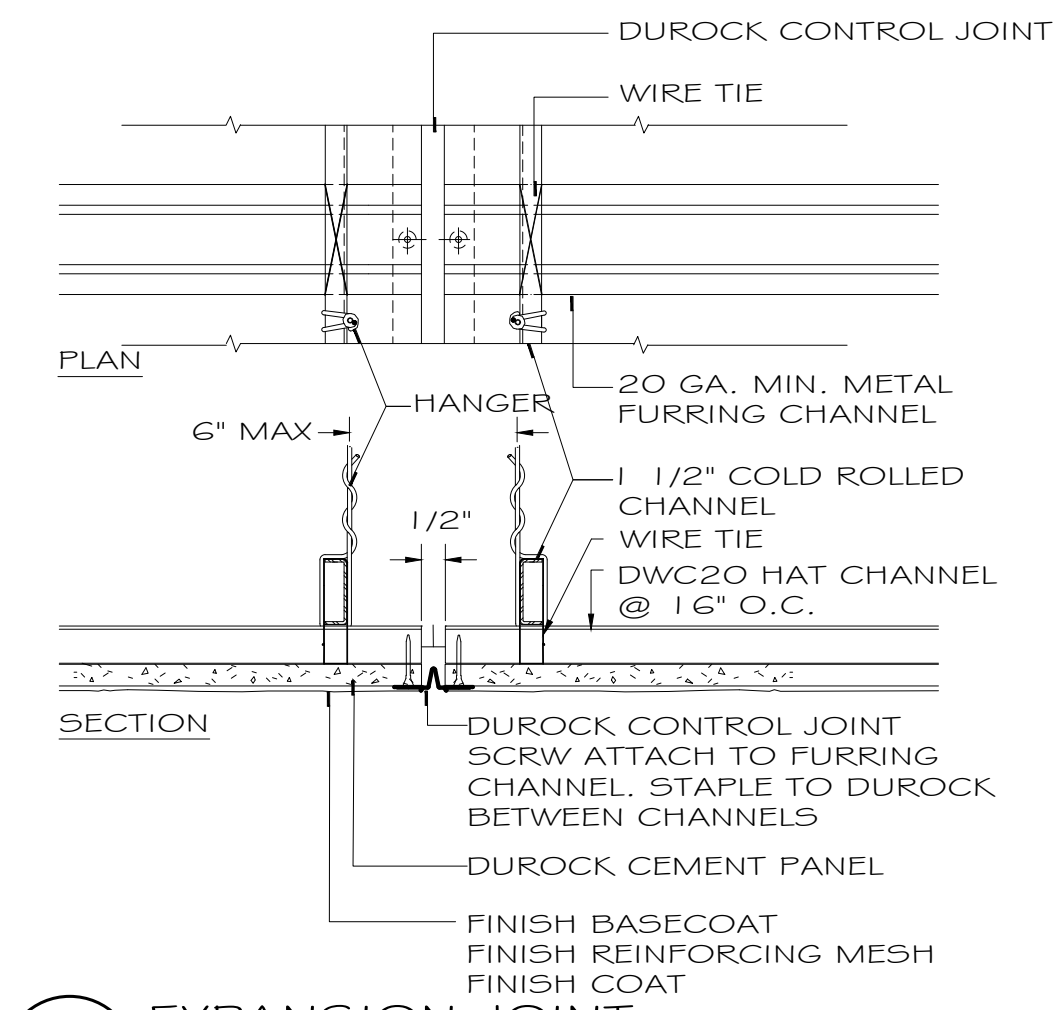
SCALE:
PROJECT NO.: 19.02 OC5
DATE: NOVEMBER 2020

SHEET NO.:



REFLECTED CEILING PLAN NOTES

- 1 SEE ELECTRICAL DRAWINGS FOR FIXTURE TYPES. SEE PLUMBING AND HVAC FOR OTHER CEILING ITEMS.
- 2 SUSPENDED GRID CEILING SHALL BE ARRANGED SO THAT THE GRID IS SPACED EQUALLY FROM EACH MOST REMOTE WALL, IN EACH DIRECTION, WITH NO TILE LESS THAN 6-INCHES, UNLESS OTHERWISE INDICATED.
- 3 CENTER AND EQUALLY SPACE, AS SHOWN, LIGHT FIXTURES, DEVICES AND / OR ACCESSORIES WITHIN AN AREA OR SPACE AND/OR WITHIN A SUSPENDED CEILING PANEL, UNLESS OTHERWISE INDICATED.
- 4 CEILING HEIGHTS OF NEW CEILINGS ARE SHOWN ON ROOM FINISH SCHEDULE UNLESS OTHERWISE INDICATED.
- 5 COORDINATE ALL LIGHTING WITH EXPOSED DUCTWORK, PIPING AND CONDUIT ABOVE SUSPENDED CEILINGS.
- 6 SEE SPECIFICATION SECTION 09 51 00 FOR APC 1 & 2.



1 REFLECTED CEILING PLAN
SCALE: 1/8" = 1'-0"

Revisions

NO.	DESCRIPTION

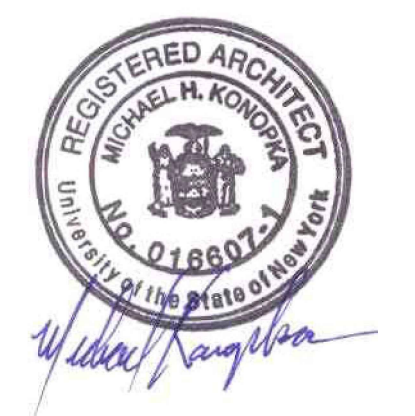
Konopka Architecture, PC
1501 East Avenue, Suite 1
Rochester, New York 14610
585.271.3480
www.konopkaarchitecture.com

SAINT MARIANNE COPE | ROMAN CATHOLIC PARISH
Love God. Live in Faith.

GUARDIAN ANGELS CAMPUS - CANOPY AND ALTERATIONS

206 1 E HENRIETTA RD,
ROCHESTER, NY 14623

SEAL



COPYRIGHT © 2020
IT IS A VIOLATION OF THE LAW FOR ANY PERSON, UNLESS ACTING UNDER THE DIRECTION OF A LICENSED ARCHITECT, TO ALTER ANY ITEM ON THIS DOCUMENT IN ANY WAY. IF ANY ITEM ON THIS DOCUMENT IS ALTERED, THE ALTERING ARCHITECT SHALL AFFIX TO THAT ITEM HIS OR HER SEAL, AND THE NOTATION "ALTERED BY" FOLLOWED BY HIS OR HER SIGNATURE, THE DATE, AND A SPECIFIC DESCRIPTION OF THE ALTERATION.

DRAWING TITLE
REFLECTED CEILING PLAN

SCALE:
PROJECT NO.: 19.02 OC5
DATE: NOVEMBER 2020

SHEET NO.: