



EAGLE CONDOR
HUMANITARIAN



ANNUAL REPORT
2021



MESSAGE FROM EAGLE CONDOR'S EXECUTIVE TEAM

THE YEAR OF LIVING PURPOSEFULLY. At a time when the world needed hope, Eagle Condor provided. Navigating the world-wide pandemic of 2020 and into 2021, ECH became a beacon for parents wanting to learn new skills to improve their family's income, for communities motivated to increase educational opportunities for their children, and for eagles of the north to connect with condor families in the south by joining hands to create firmer foundations of self-reliance through humanitarian projects.

Humanitarian Expeditions began as soon as countries were open. Self-Reliance training classes went from on-line to a mixture of in-person, zoom and other innovative solutions. Children's programs continued to provide nutritious meals, and, in some lock-down communities, this meant hurdling barriers to deliver monthly bags of food. All in all, a mixture of miracles and persistence made our programs get to the exact people who needed them most.

As always, our efforts are possible because of the generosity of our monthly child sponsors, donations of kind individuals, families, and family organizations, and an active Board of Directors.

TOTAL REACH

SELF-RELIANCE PARTICIPANTS
TRAINED: **642**

CHILDREN'S PROGRAMS &
COMMUNITY ASSISTANCE:
1280+

INDIVIDUALS LIFTED THROUGH
HUMANITARIAN EXPEDITIONS:
5378+

The "Total Reached" are conservative — it would be considerably more if one factored in the ripple effect!



WHY EAGLE CONDOR'S APPROACH WORKS!

Who We Are:

Established 2003, Eagle Condor Humanitarian (ECH) is a 501(c)3, tax-exempt, nonprofit organization. Headquartered in SLC, overhead is donated by ION (International Orthopedic Neurological Foundation).

- Our Board of Directors volunteer as Humanitarian Expedition Leaders
- ECH Board Members cover the basic Self-Reliance Training costs allowing 100% of Child Sponsorships and Special Initiative donations to go directly to designated programs.
- In 2021 ECH's philosophy of minimal overhead continued to be instrumental in our ability to quickly shift our efforts to ever changing rules and regulations of airlines, countries, and communities concerns regarding COVID-19.
- ECH's Executive Team acts as the Executive Director. This provides more involvement with Board members and checks and balances for all programs.

Organizational Overarching Goals:

- Break the cycle of generational, chronic poverty
- Cultivate strong humanitarian partners
- Work within the existing cultural context to facilitate the development of local leaders as positive change agents within their communities/villages
- Improve family economics and work towards unifying and strengthening family relationships
- Create sustainable hope, dignity, and self-reliance within those we serve
- Ensure ECH stakeholders that their time, talents, and donations are creating sustainable self-reliance in program participants

The proper aim of giving is to put the recipient in a state where he no longer needs our gift.

—C. S. Lewis, The Four Loves

Self-Reliance Program's Align with Guiding Principles:

- 1 **Projects have exit strategies:** ECH's ultimate goal is to work ourselves out of a community. To be able to slip away, with the community being able to continue on without a setback.
- 2 **Go beyond the "fishing analogy": Teach a man to teach others to fish, and feed generations.**
 - a. **Expeditions:**
 - i. SRA participant community goals are priority for expedition projects
 - ii. **Community Collaboration – infrastructure projects**
 - iii. SRA program expanded to Ecuador and Colombia
 - b. **Self-Reliance Training:**
 - i. SRA program manuals and training are frequently assessed and remodeled to provide more effective training in the poorest areas of the countries where we serve.
 - ii. SRA Trainers collaborate weekly and provide support for the communities where they are training.
 - c. **Children's Centers:** ECH Children's Program was started to keep families together. Instead of leaving home to find opportunities "on the street", ECH's solution is simple. Provide food and educational materials in exchange for school attendance.



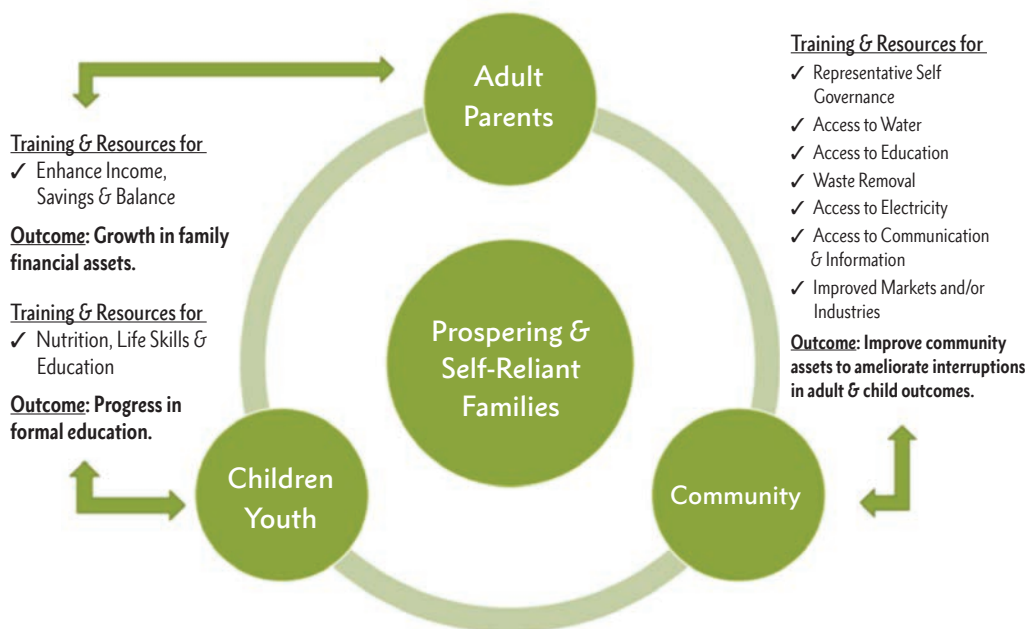


3 **Search for the Cause of the Cause:** ECH programs help families and communities break the cycle of generational poverty by building true relationships and talking with, not *to* each person.

- ECH works with a family systems approach:** Our projects and programs think through the ripple effects that spill into other areas of people's lives and possible unintended consequences.
- ECH projects and programs are people based:** Our purpose is to garner relationships with people in the communities we serve through projects creating self-reliance and expedition synergy connecting our global family.
- ECH works to solve chronic problems:** Disasters and disease happen. Acute needs abound and need immediate assistance. When the initial push is over and the life-threatening moments have passed, our focus is to help the person or community find long term solutions.

"There was something so sweet and tender about those we served on our project. Our work was a string of small coincidences that together was a miracle." – CELESTE BAIN, Expedition Leader

Our Model for Alleviating Generational Poverty





ECH DONATION STEWARDSHIP

ECH is committed to careful stewardship of every donation to provide the greatest possible impact. Within the context of our mission, all resources are measured and assessed in three key areas:

1. Effectiveness. ECH's Executive Team regularly evaluates each program to ensure all donations make a measurable and sustainable difference in the lives of those we serve. ECH Self-Reliant Association graduates experience increases in average family income and increases in average family savings. Of the businesses launched by our graduates, the majority are still operating AND growing 6 months after graduating—demonstrating sustainable outcomes.

"My favorite was helping make this school be the first school in the region to open after more than a year of closure due to CV19."

2. Efficiency. The commitment to a lean team continued to enable ECH to provide programs and services without interruption. Two US employees, along with the volunteer Board of Directors, run ECH. We continue strong with our current US staff and International Trainers. In fact, in 2021 we added 1 Trainer, increased funds going to Children's Centers to make up for inflation and access issues. As soon as countries opened, **volunteers** signed up to serve!

- Expeditions (Non-Surgical) 378 individuals that contributed **6,522 hours** of labor into humanitarian expeditions, or a value of **over \$106,000!**
- Expeditions (Surgical) All surgical expeditions cancelled due to CV19.

"We were shocked the women at this shelter had no running water, but one of the men in our group was a plumber. He knew exactly what was needed and plumbed everything!"

Leveraging/Multiplying Dollars As a means of bringing ownership and sustainability to our Self-Reliance programs, our model requires some sort of involvement and/or investment from local governments. Sometimes this gets creative! Municipalities may provide matching stipends for Trainers and/or grant start up equipment for graduating participants. In 2021 some municipality resources went directly to CV19 issues depending on need.

3. Accountability. Eagle Condor Humanitarian has CPAs and financial consultants on our Board and Executive Team who provide a foundation of integrity for every donated dollar. In addition, ECH has:

- A current GAAP compliant and financial audit
- Highest BBB rating 12 years in a row
- Best in State award 12 years in a row
- Gold Standard on Charity Navigator

ECH's check and balance system maximizes strict financial control so we can report to donors on the status of the organization and, equally important, how their dollars are specifically making a difference whenever asked because **we are accountable to you!**

2021 ECH PROGRAM HIGHLIGHTS & IMPACT

SELF-RELIANCE TRAINING

Mandatory quarantines fluctuated depending on the country in 2021. Fortunately, our resourceful Trainers were able to use a mix of traditional **in-person** and virtual **Self-Reliant classes**. All Trainers made sure people with the desire to learn principles of self-reliance were able to learn!

- **Participants:** 642
- **Classes:** 468
- **Graduates:** 432
- **Businesses Launched:** 248
- **Community Service Projects:** 56

(SR community projects included planting trees, cleaning schools, maintaining public spaces and more!)

"My story is not complicated— I like helping people."

– MOISES MEJIA (MOY), Self-Reliance Trainer for ECH

Typical Class:

20–30 participants in a weekly class for 3-4 months

Self-Reliance Training Objective:

Significantly increase household income and savings to better provide for family & community current and future needs.

Classes Content

- **Basic Business Principles** for those exploring and wanting to start a business
- **Progressive techniques** for participants who already have a business and are looking to increase production and income
- **Guided help to complete Business, Personal, and Community Plans:**
 - ◆ **Business** – Product, pricing, promotion, bookkeeping, profit & savings.
 - ◆ **Quality of Life** – Family and Personal goals
 - ◆ **Community** – Improvements to their area developed by the group

Who Attends & Where Were Classes Held?

Mothers, fathers, anyone who wanted to learn basic business principles to start a business or develop techniques for increased production for those who already have a small business. **Classes were held** in schools, churches, street corners, on-line basically, anywhere people could meet!

Exciting Expansions:

Opened New Areas & Types of Classes (including prison reform) in Peru, Colombia & Ecuador.



SELF-RELIANCE TRAINING

Continued...

New Partnerships:

- **Younique Foundation** – providing workshops, Defending Innocence, and Finding Hope for women to overcome abuse.
- **Rotary Clubs in Colombia & Peru** – providing start up equipment for Self-Reliance Participants!

New Businesses in 2021 because of Self-Reliance Training!

- Poultry farms
- Bakeries
- Clothing manufacturing
- Metal workshop
- Bee honey management (apiculture)
- Goat milk production
- Restaurants
- Grocery stores
- Oregano farms
- Clothing sales
- Gift stores
- Sewing Associations
- Chocolate manufacturing
- Handicraft workshops

Example of Impact for Self-Reliance Workshops (Piura region) Prior to Pandemic:

# Families that Began	102
# Families that Finished	73
% Retained	72%
Avg % of children entering secondary school (Prior)	13
Avg % of children entering secondary school (After)	25
% Improvement in Childhood School Attendance	48%
# of businesses launched, as a result of training/programs	56
# of businesses operating and growing 18 months after graduating from training	41
% of Businesses Sustained	73%
Avg Family Income, Monthly (Prior)	\$146.16
Avg Family Income, Monthly (within 6 Months After)	\$215.84
% Improvement in Avg Family Income (Monthly)	32%
Avg Family Savings (Prior)	\$46.23
Avg Family Savings (within 6 Months After)	\$88.38
% Improvement in Avg Family Savings	48%

Example of Impact for Self-Reliant Workshops (Piura region) 2021:

# Families that Began	70
# Families that Finished	58
% Retained	83%
Avg % of children entering secondary school (After)	—
Avg % of children entering secondary school (After)	—
% Improvement in Childhood School Attendance	—
# of businesses launched, as a result of training/programs	30
# of businesses operating and growing 18 months after graduating from training	10*
% of Businesses Sustained	33%
Avg Family Income, Monthly (After)	S/ 406
Avg Family Income, Monthly (within 6 Months After)	S/ 609
% Improvement in Avg Family Income (Monthly)	50%
Avg Family Savings (After)	S/ 60
Avg Family Savings (within 6 Months After)	S/ 130
% Improvement in Avg Family Savings	116%

* The Municipality has not yet complied with implementing the business plans of the participants





CHILDREN'S CENTERS

Thanks to our sponsors ALL children received nutritious meals, either in person or through monthly food baskets, regardless of lock-downs!

Number of children directly served:

- Rays of Hope, Peru: 32
- Nauta, Peru: 78
- Semillas, Colombia: 120
- Otavalo, Ecuador: 50
- Expedition Projects Helping Children: 800 +

Rays of Hope (Jesus, Peru) Coordinator Diana (Milli) Mejia:

Due to the continued impact of CV19 pandemic in Peru, the delivery of food baskets that Eagle Condor Humanitarian made through the Rayos de Esperanza program in Jesus, Cajamarca continued to be a great help to those who are part of this program. Since the beginning of the pandemic, food delivery has been carried out in an uninterrupted way month after month, bringing help and stability to families in need during these difficult times and fulfilling the commitment to provide healthy food for children and adolescents who are part of this program.

Library Added to Rays of Hope. In December Carson Bateman went back to check on the children. Carson is pursuing a multi-year study gathering measures showing how nutritious food effects health indicators and educational abilities. This time he expanded his commitment to

the overall welfare of these children by creating a library! While there, the new annual tradition of a chocolatado party ensued!

"Malnourished children learn poorly. It's obviously hard to focus on school when what they really want is a full belly. As an intern I saw this first hand. The program at Rays of Hope really makes learning possible."

Semillas de Amor (Turbaco, Colombia) Coordinator Uris De Voz:

Our program averages around 90 children a day and by the end of 2021 we were finally back to face-to-face interactions! During this year we estimate we delivered over 14,400 food baskets and lunches to homes which included drinking water, fruit, protein, and other necessities. Toward the end of the year we were able to continue our workshops for the mothers of our children. Our volunteer psychologist provided information to help these women have healthy emotional choices. Although COVID continued to hurt the entire population world-wide, thanks to your continued support and in partnership with the local food bank and Eagle Condor, we have been able to overcome this situation. When school started, we resumed providing a daily lunch. We thank EAGLE CONDOR sponsors for helping our children.





HUMANITARIAN EXPEDITIONS:

As soon as countries opened, ECH entered!!
Expedition community projects all focused on creating stronger foundations of self-reliance.

- Humanitarian Expedition Participants: 378
- People Served: 5000 +

"We fell in love with the Peruvian people and culture, and we never wanted to leave!"

Humanitarian Expedition Projects Creating Foundations and Avenues for Self-Reliance

PERU: 6 EXPEDITIONS

Jesus, Rays of Hope Children's Center

- New roof
- Greenhouse
- Painted inside children's center
- Mixed a lot of cement!
- Planted trees

Remar Women's Shelter (Outside of Cusco)

- Built a greenhouse
- Plumbbed the center (an entire system!)
- Constructed a new kitchen
- Bought and stacked wood for their cooking needs
- Mixed and poured concrete for a new play area

- Remodeled bedrooms including new mattresses and bedding
- Replaced the roof
- Painted all the living areas

Nauta ECH Community School

- Woodworking Center for teens
- Electricity to ALL the school rooms!
- Painted the entire school – inside and out
- Replaced all the slats in cracks throughout the school
- Screened in the kitchen
- School Kits
- Dental Exams



Piura:

- Eye exams – 4 optometrists, 3 areas, over 1200 patients received glasses!
- Oregano production
- Watermelon farming

"When someone discovers a new talent, that's the sign the expedition was successful!"

ECUADOR: 3 EXPEDITIONS

Guayacana

- 2 greenhouses
- Fish farm
- Community chicken house



Otavalo

- Refurbished 3 schools (new roofs, paint, retaining walls, protectors on windows and hand sinks.)
- Septic System included a trench 40ft long, 3ft wide and 5.5ft deep
- New bathrooms
- Playground overhaul including surrounding it with cement walls and filling it with dirt
- Patched walls, seems, floors, ceilings and basically anything else with plaster & concrete
- Painted school rooms
- Sanitized entire school
- Hygiene Kits
- School Kits

"I've never had sheets before."



COLOMBIA: 5 EXPEDITIONS

Turbaco, Semillas Children's Center

- New roof
- Repainted the community school, chairs, desks and tables
- Added 2 classrooms to the community school
- Refurbished and fixed the school bathroom
- Electrical lines for schools
- Cleaned school
- Community clean-up projects
- Secured the outside structure of Semillas
- Cemented the outside breezeway
- Poured new kitchen floor
- Re-set the water tank
- Dental exams and fluoride
- School Kits

"My favorite was this girl who met us every morning before working to show us her pet alligator!"



Isle Grande

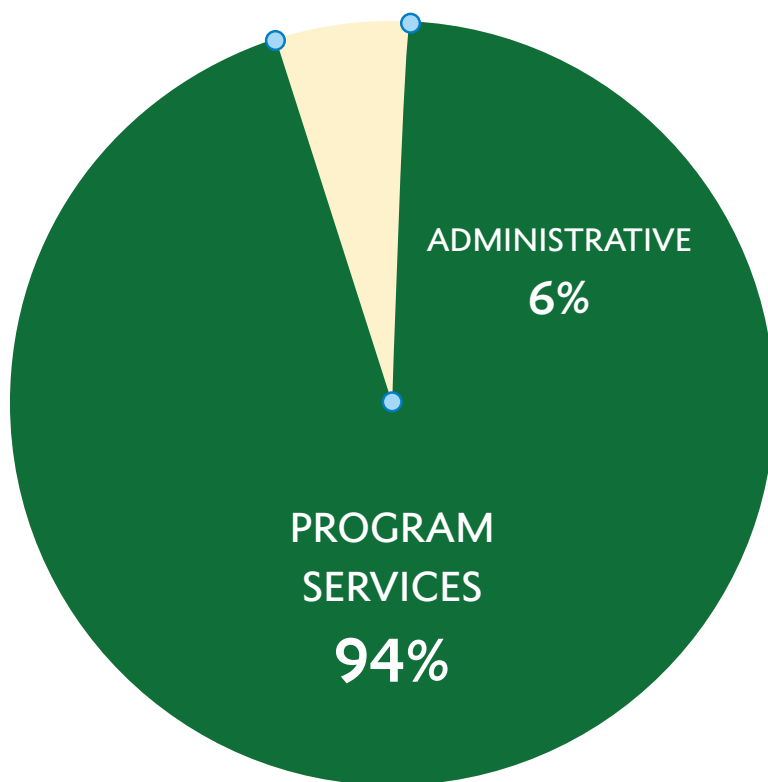
- Community center
- Bathrooms
- Dental exams
- Dermatologist exams
- New roofs
- New playground
- School house & teen-center
- School Kits



2021 FINANCIAL ACCOUNTABILITY

DUE TO THE CONTINUED WORLDWIDE PANDEMIC, the Foundation again faced financial challenges, but we made it! Our foundation is grateful to our Board who continues to cover all Self-Reliance Training costs, to Child Sponsors who provide monthly stability for the children programs, for adventurous Expedition Participants who willingly labor alongside those who need help and patrons who create paths out of poverty donating to specific self-reliance initiatives. And all this works because of the conservative decisions and the low overhead of the Foundation.

We're happy to report that the Foundation finished 2021 in a strong financial position—and is committed to continuing and strengthening our mission in 2022!



STATEMENT OF ACTIVITIES

JANUARY – DECEMBER 2021

	JAN – DEC 2021	JAN – DEC 2020 (PY)
REVENUES		
Career Development/SRA	45,283.46	87,339.04
Children's Sponsors	68,435.00	63,189.89
Covid-19 Grants	13,220.00	35,000.00
Educational Interns	2,748.54	2,844.85
Expeditions Fees	878,165.49	82,594.46
General Unrestricted Donations	98,719.22	51,243.69
In-kind Contributions	26,691.25	28,263.75
Interest Income	26.20	—
Misc Restricted Donations	0.00	19,545.16
Total Revenues	\$ 1,133,289.16	\$ 370,020.84
EXPENSES		
Career Development Costs	58,741.50	76,189.39
Child Program Costs	45,817.13	47,216.46
Education Intern Costs	5,808.28	7,603.02
Expedition Costs	905,802.29	136,696.69
General Administration/Fundraising Expenses	34,185.65	36,291.75
In-kind Expense	26,691.25	28,263.75
Misc Restricted Donations	—	18,934.49
Total Expenses	\$1,077,046.10	\$ 351,195.55
Change In Net Assets	\$ 56,243.06	\$ 18,825.29





ECH STAFF AND OFFICERS:

EXECUTIVE COMMITTEE:

President: Brent Bell

Vice President: Jan Felix

Secretary: Karen Timothy & Tanya Mealey

Treasurer: Scott Jolley

MEMBERS OF THE BOARD:

Celeste Bain

Brent Bell

Rebecca Cressman

Doug Crockett

Jan Felix

Keith Johnson

Scott Jolley

Alfred Kessler

Tanya Mealey

Randy Moore

Rob Moore

Carol Nelson

Juan Pita

Valerie Salin

Terrylynn Skelton

Mike Taylor

Karen Timothy

Shauna Timothy

SOUTH AMERICAN IN-COUNTRY TEAM:

Self-Reliance Trainers:

Cajamarca, Peru: Moises Mejia

Piura, Peru: Jorge Sosa Ramirez, Victor Chunga,
Arnold Chunga

Turbaco, Colombia: Osvaldo Sergovia

ECH Expedition Project Coordinator:

Wilfredo Sanchez

Children Centers Coordinators:

Jesus, Peru (Rays of Hope): Diana Milagros Mejia

Turbaco, Colombia (Semillas de Amor): Uris De Voz

Children's Learning Center Partners:

Nautu, Peru: Patti

Isla Grande, Colombia: _____

UTAH OFFICE STAFF:

Director of Operations: Laura Chabries

Expedition Coordinator

& Self-Reliance Director: Missy Webster

Medical Expedition Director: Jan Felix

CONTACT:

801-263-2000

info@eagle-condor.org

www.eagle-condor.org

COMMITTEES:

Child Welfare: Laura Chabries, Missy Webster

Communications/Marketing: Laura Chabries,
Karen Timothy, Shauna Timothy

Expeditions: Missy Webster, Jan Felix

Finance: Carol Nelson, Brent Bell, Scott Jolley

Interns: Laura Chabries, Missy Webster

Self-Reliant Training: Peru Team, Missy Webster



Chakana and Condor as our symbol as we bridge cultures. We'd like to give **special thanks to our donors for making these cultural bridges possible.**

ECH LOGO: The Condor represents the people of the South and the Incan "Chakana" represents bridging heaven and earth. Today, Eagle Condor uses the

THANK YOU TO OUR DONORS!

“There was something so sweet and
tender about those we served
on our project in Peru. Each day our work
was a string of small coincidences that
together was a miracle.”



EAGLE CONDOR
HUMANITARIAN