



# EAGLE CONDOR

HUMANITARIAN



## ANNUAL REPORT

# 2020





## MESSAGE FROM EAGLE CONDOR'S VICE PRESIDENT:

UNLIKE MANY ANNUAL REPORTS in past years outlining the many successes Eagle Condor has experienced, this 2020 report may seem to stray from our mission statement: *Alleviating Poverty Through Self-Reliance Training to Individuals and Families*. The world-wide Covid-19 pandemic certainly had its effect on many of our programs. However, despite the enormity of the challenges, the Eagle Condor team, Executive committee and board members rose to those challenges, quickly adapted and perhaps more than any other year, created systems not only to alleviate poverty, but to save lives as well.

Although family and youth expeditions had to be cancelled as well as medical spine missions, the wholistic approach to our mission continued in a virtual and modified format. The Expeditions we were able to take were successful, giving us great hope for the coming year.

Beginning in late March, our ECH in-country team's focus in Peru, Ecuador and Colombia shifted to providing life sustaining food and medical supplies. ECH provided monthly food supplies to our children's centers and their families. Emergency oxygen, medical supplies and protective gear also was provided to many families.

In addition, the Self-Reliant class training was modified to virtual learning. The ECH teams sought out interested and qualified individuals to participate, with many graduating. This report will provide more details of all these efforts.

Of course, all of this was possible because of the generous donations of many individuals, families and family organizations to these programs. It seemed, even with many people struggling for employment and family's needs, they found the opportunity to generously help our efforts.

We anticipate that the world will come back to some normalcy in 2021 and we will have the opportunity to bridge cultures for family and youth through our expeditions and other programs. Even among the challenges of employment and family needs, many donors found the opportunity to generously help our efforts.





# WHY EAGLE CONDOR'S APPROACH WORKS!

**Who We Are:** Established 2003, Eagle Condor Humanitarian (ECH) is a 501(c)(3), tax-exempt, nonprofit organization. Headquartered in SLC, overhead is donated by ION. Our Board of Directors volunteer as Humanitarian Expeditions Leaders and cover the basic Self-Reliance Training costs allowing 100% of Child Sponsorships and Special Initiative donations to go directly to the designated programs. In 2020 our philosophy of minimal overhead became instrumental in our ability to quickly shift our boots on the ground to relief efforts. It is not an exaggeration to say Eagle Condor's quick response to CV19 saved hundreds of lives.

## COVID Relief Efforts & Impact Highlights:

**Peru: Nauta, Piura & Cajamarca** – Oxygen, medicine, emergency food supplies and Self-Reliance initiative for families & protective equipment for medical workers (\$49,000 – 428 families)

**Ecuador:** Guayacona, Otavalo & Galapagos Island – Emergency Family Food Supplies & Self-Reliance Initiatives (\$12,400 – 173 families)

**Colombia:** Turbaco & Isla Grande – Family Food Supplies & Self-Reliance Initiatives (\$10,500 – 190 families)

## Organizational Over-arching Goals:

- Break the cycle of generational, chronic poverty
- Cultivate strong humanitarian partners
- Work within the existing cultural context to facilitate the development of local leaders as positive change agents within their communities/villages
- Improve family economics and work towards unifying and strengthening family relationships
- Create sustainable hope, dignity and self-reliance within those we serve
- Ensure ECH stakeholders that their time, talents and donations are creating sustainable self-reliance in program participants



## COUNTRIES WHERE WE SERVE:

### Peru, Ecuador & Colombia

Our most mature programs are in Peru. Currently ECH works in communities within the Regions of Piura, Iquitos, Cusco and Cajamarca. Our programs foster partnerships with local municipalities to ensure the projects are beneficial, long-lasting and what is truly needed as we work with families who suffer from a variety of symptoms related to poverty, including malnourishment, diseases and lack of basic education/training. These families find it very difficult to lift and sustain themselves, due to limited resources and a general lack of knowledge, thus projects need to be accessible and easy to assimilate.





**What We Do (Traditionally):** ECH alleviates poverty by facilitating a sustainable, self-reliant foundation of skills and aptitude within individuals, families and communities. This is accomplished through our unique model (see image).

Adults receive individualized training to enhance income, savings and life balance through our Self Reliant classes.

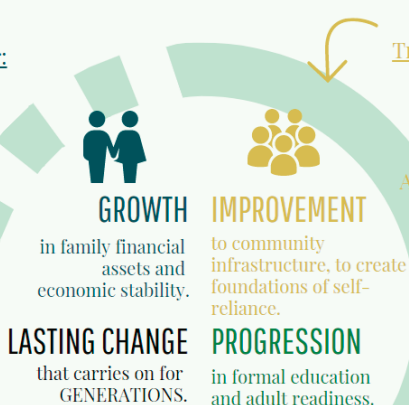
Children & Youth are provided nutritional meals and mentoring in exchange for going to school and to break the cycle of generational poverty.

Communities benefit from collaborative projects designed to establish conditions for self-reliance to thrive and be sustainable.

## Our Model for Alleviating Generational Poverty

**Adults and Parents**  
Training and Resources for:  
Enhancing income, savings  
and balance.

**Community**  
Training and Resources for:  
Waste Removal  
Access to Water  
Access to Electricity  
Access to Education  
Access to communication  
and information  
Improved Markets and  
Industries  
Representative Self  
Government



### RESULT:

Prospering and Self-reliant Families whose knowledge and experience is shared with future generations.

**Children and Youth**  
Training and Resources for:  
Nutrition, Life Skills, and  
Education.

## How ECH Adapted During CV19:

**Adults** – The need to understand Self-Reliance principles became more important than ever during 2020. Training shifted to on-line classes and/or in some areas classes were taught outside using social distancing regulations. Focus targeted on individualized training to enhance income, understand savings and create life balance through our Self Reliance classes were embraced with greater intensity than ever before. 135 individuals were taught and 124 participants graduated!

**Children & Youth** – Youth centers that traditionally provided nutritional meals in exchange for going to school and to break the cycle of generational poverty, now became hubs to deliver emergency food baskets to the families of the children under our care. 140 children continued to be fed either at a center or through food baskets.

**Communities** – Collaborative projects designed to establish conditions for self-reliance to thrive and be sustainable shifted to Emergency Essentials such as oxygen, medications, masks, food, etc. Literally tens of thousands were helped with the ECH relief efforts. It is impossible to know the exact ripple effect, but heartfelt appreciation to our donors and sponsors continues to pour in.





## ECH DONATION STEWARDSHIP

ECH is committed to careful stewardship of every donation to provide the greatest possible impact. Within the context of our mission, all resources are measured and assessed in three key areas:

**1. Effectiveness.** ECH's Executive Team regularly evaluates each program to ensure all donations make a measurable and sustainable difference in the lives of those we serve. ECH enthusiastically provides outcomes, because our programs work! Due to lockdowns, statistics for 2020 are outliers, but past years provide the following measures, among families we serve:

- ECH Self-Reliant Association graduates experience increases in average family income, but most noteworthy is the increase in average family savings (on average from \$0.42 to \$103.03 in savings), which better insulates families from unpredictable "shocks", like this pandemic year, to income instilling growing confidence and planning for their own future.
- Of the businesses launched by our graduates, the majority are still operating AND growing 6 months after graduating—demonstrating sustainable outcomes.
- The number of children entering secondary school has increased nearly 50%—showing an improvement against one of the largest contributing factors to generational, chronic poverty.

**2. Efficiency.** 2020, CV19 shined a light on the importance of our lean team. Two US employees, along with the volunteer Board of Directors, run ECH. We did not have to lay off the US employees, or Independent SRA Trainers, nor did we reduce the funds going to Children's Centers. PPP and

SBIG Grants sustained the bulk of our overhead allowing over 96% of our revenues to go directly into programs. Typically an equal or greater definition of efficiency is how we get so much done leveraging Volunteers, but lockdown significantly reduced the number of expedition participants, medical expeditions and interns:

- Internships 5 new and returning interns contributing over 2,000 hours of labor to our children's program at Rays of Hope.
- Expeditions (Non-Surgical) 40 individuals that contributed 2,222 hours of labor into humanitarian expeditions, or a value of \$26,014.
- Expeditions (Surgical) All surgical expeditions cancelled due to CV19.

**Leveraging/Multiplying Dollars** As a means of bringing ownership and sustainability to our work, our model typically requires the involvement and investment from local governments. In the past municipalities have provided up to 40% of the program costs using creative and tailored approaches that work for each community. All municipality resources went directly to CV19 issues.

**3. Accountability.** Eagle Condor Humanitarian has CPAs and financial consultants on our Board who provide a foundation of integrity for every donated dollar. ECH has a current GAAP compliant and financial audit. This check and balance system maximizes strict financial control so we can report to donors on the status of the organization and, equally important, how their dollars are specifically making a difference. In other words, **we are accountable to you!**



# 2020 COVID 19 RELIEF HIGHLIGHTS

Beginning in early March, our teams in Peru, Ecuador and Colombia shifted focus from training to providing life sustaining, and lifesaving food and medical supplies.

## **MARCH – Emergency Food Baskets, 76 families: Cajamarca, Peru**

Project White Flag was ECH's first CV19 relief initiative. Rural families, who after 30 days of country-wide quarantine had received no food assistance, needed help! Those desperate for food began hanging white flags on their homes. ECH friends and team members supplied 70 families with emergency food boxes within a week of asking for donations.

*"Every little bit helps! When they have nothing, even a small amount is everything!"*

## **APRIL – Emergency Food Baskets, 155 families: Children's Centers – Rays of Hope (Jesus, Peru) & Semillas de Amor (Turbaco, Colombia)**

Peru, Ecuador and Colombia continued strict quarantine orders. Since schools were closed and the children couldn't come to the food, we decided to take the food to them. In some cases, special

permission had to be arranged for deliveries—but communities were eager to partner to assist those in need.

Entire families whose children participated in the Rayos de Esperanza (Rays of Hope in Peru) and Semillas de Amor (Seeds of Love in Colombia) programs benefitted from the monthly food baskets.

Most of these families received no government assistance because they did not fill out a state census. ECH is especially grateful to our Children's sponsors for their on-going generosity.

## **MAY – Protective Medical Equipment, 100's of Medical Workers: Piura, Peru**

Piura, Peru's regional government needed masks and medical gowns and reached out to ECH Self-Reliance Trainers for help. ECH already had a Self-Reliance group of women who sewed and were ready to go! By creating alliances with this established Self-Reliance group of women, along with the Utah non-profit Humanity Sews AND Rotary clubs in SLC and Piura, \$1200 in donations stretched to nearly \$10,000! ECH bought additional sewing machines along with material for gowns and masks.





## 2020 COVID 19 RELIEF HIGHLIGHTS CONTINUED

### JUNE – Emergency Oxygen and Medical Supplies, 200 Families: Nauta, Peru

In Nauta, Peru no neighborhood went untouched by the gravity of the CV19 pandemic. Headlines in nearby Iquitos read “We are living in a catastrophe.” Everyone had a neighbor, friend or family member who died and government aid was not reaching this remote village so they contacted ECH.

As soon as ECH said funds would be secured, Patty Vasquez and Mario Taricuarima organized volunteers to deliver emergency medical supplies in Nauta!

Those infected called for an interview with a medical Doctor — the doctor called a pharmacy who then sent the specific medical supplies directly to our contact who delivered the supplies. To date, ECH was their only assistance.

*“Yesterday Lucio was released from the hospital! Lucio had Covid-19 and stayed one month in the ICU. Thanks to medical supplies from Eagle Condor, he received treatment and lived!”*

### JULY – Emergency Family Food Supplies, 190 families: Isla Grande, Colombia

Isla Grande is an isolated community off the Colombian coast dependent on tourism. After 3 months of lock-down, all the supplies on the island were depleted. The Colombian government agreed

to allow one person off the island to go to Cartagena and get supplies, but they need cash. ECH leveraged every cent to maximize the amount of food we could access by working through a local food bank!

*“I decided to write to thank you for the support you gave for my community – the truth was that we needed it and was at an opportune moment that help came to us. We thank Eagle Condor for the great support, I cannot find the words to thank everyone but I insist so much thank you..”*

### AUGUST & SEPTEMBER – Emergency Family Food Supplies, 148 families: Guayacana, Otavalo and Galapagos Island, Ecuador

Guayacana is a remote village dear to the hearts of all at ECH. The economic activity of all the families in this remote community is primarily based on the sale of cocoa. With the duration of the pandemic and quarantine decree stretching through the summer, the situation became very dire, socially and economically. When local leaders of the community alerted us to their URGENT need for food, ECH responded immediately with internal donations.

In Otavalo, the Tituana family shifted from school lunches to stretching ECH funds to cook and deliver meals to displaced elderly. Emergency food supplies were hand delivered to hundreds of families and elderly patients living on the streets and in desperate need.







## 2020 ECH SELF-RELIANCE TRAINING WITH A SOCIAL TWIST!

**Mandatory quarantine made teaching traditional Self-Reliant classes impossible, but thanks to our resourceful Self-Reliant Trainers, they EACH found unique ways to ensure their participants were learning!**

- **Jorge Sosa** used Whatsapp with all his students and recorded his classes so every participant could receive instruction.
- **Victor and Arnold** were able to include all their students in Facebook groups. They said every time they had live classes all actively participated. In addition, when possible they met outside and simply adhered to social distancing guidelines.
- **Moises** began using Prezi presentations on Google Hang-out for his college aged participants!

Online training also fostered ingenious Self-Reliance Leadership Training collaborations connecting all 3 countries where ECH serves in a unique and re-imaged way. Village presidents, program directors, ecclesiastical leaders, school teachers—anyone with a lead role involving Eagle Condor projects were invited. The original objective was to strengthen community connections, but to our delight the classes became a mecca for brainstorming ideas, sharing concepts and working together to enhance and strengthen Self-Reliance for each area! Class participants added friends, family and community members to every meeting!

Despite the difficult situation, people with the desire to learn principles of self-reliance received training and participants garnered hope that their dreams of starting their own business could become a reality. In Libertad Colombia and group of women, primarily single with 2–3 children and no source of income, formed an SRA group in hopes of lifting themselves from poverty by learning how to sew.

*"In a place overwhelmed by machismo, marked socioeconomic and gender inequalities, this ECH program managed to free their minds from machista chains that had been passed from generation to generation." – Moises Meijia, Trainer*

These women and their families sent their sincere expressions of gratitude, constantly expressing, 'they no longer give us fish, we are learning to fish', and in turn, they hope to strengthen a bridge of collaboration between their community and Eagle Condor Humanitarian.

To date they have formed an association to produce products for companies in Cartagena. The business class is finished, the contacts are made, and with a sewing machine provided by ECH donors they have begun new careers!







## 2020 ECH CHILDREN'S CENTER HIGHLIGHTS

### **Rays Of Hope – Coordinator Diana (Milli) Mejia**

**Report:** “During the CV19 pandemic in Peru, the delivery of food baskets that Eagle Condor Humanitarian made through the Rayos de Esperanza program in Jesus, Cajamarca was of great help to those who are part of this program. Since the beginning of the pandemic, food delivery has been carried out in an uninterrupted way month after month, bringing help and stability to families in need during these difficult times and fulfilling the commitment to provide healthy food for children and adolescents who are part of this program.

Here is an example of families who have received this help:

- María and Fredesminda, mothers of the Rayos De Esperanza program, live in Pashul, a small town that is two hours away from Jesus. The remoteness of this place and the lack of transportation make it very difficult to find opportunities in the city and even more so in this difficult time of pandemic where job opportunities have been reduced. Their homes are sustained by agriculture, which in spite of everything does not generate enough income to improve the quality of life of these families. However, all this has been mitigated with the support that Eagle Cónдор is providing through its Rayos de Esperanza program, which has allowed these families not to lack food during these difficult months of the pandemic and they have been able to feed children and adolescents who they are part of these families. These mothers are extremely grateful for the support

they have received during this difficult situation and express their gratitude to all those who have made this possible and have given them this help, bringing relief to their homes.”

### **Interns Returned to Rays of Hope in December.**

Carson Bateman, his brother Joel and Brooke Bell all went back to check on the children. Carson is pursuing a multi-year study gathering measures showing how nutritious food effects health indicators and educational abilities. They all pitched in to gather the information and then in their “spare time”, got a group of parents together to repair the roof and built a security wall around the center. Of course, because they were there, a Holiday Party was also high on their list of activities.

### **Semillas de Amor–Coordinator Uris De Voz Report:**

“Our program started with a group of 100 children, after about 15 aged out. When registering we have realized we still have underweight children, so we started putting together some new menus in hopes of better nutrition to get to the ideal weight. Before we could really see if this approach was working, the pandemic hit Colombia.

We know COVID 19 has affected the entire population worldwide, but thanks to your support and in partnership with the food bank, we have been able to cope with this situation. Each month we have been able to deliver more than 300 food baskets, drinking water, donations of bananas, liters of soda and other basic necessities and still provide a daily lunch. Thank you EAGLE CONDOR for all that you do.”





# 2020 ECH EXPEDITION HIGHLIGHTS

ECH 2020 Expeditions had numerous community projects planned to help create stronger systems of self-reliance, including greenhouses, trout farms, water reservoirs, and schools! ECH was able to complete 3 Humanitarian Expeditions (one prior to lock downs, two after!) In addition, creative and collaborative grassroots projects emerged.

Due to country lockdowns, once again our focus and resources shifted. People need work to provide food for families, so ECH Expedition project leader Wilfredo Sanchez began organizing neighborhood groups: Some teams built greenhouses, creatively utilizing their limited spaces to grow a variety of vegetables, while others began raising chickens. Families formed co-ops to share the produce and protein, and any excess was sold to help with family finances.

## Guayacana & Quinde Ecuador Eye Expedition in February:

Humanitarian Expeditions in 2020 started with an Eye Exam Expedition to Guayacana and Quinde. Word of mouth brought over 2500 indigenous villagers from the surrounding area to be examined. The team placed all the glasses they carried down and were able to deliver over 200 custom glasses back to the locations once it opened again in October.

## Colombian Eye Expedition in November!

ECH was FINALLY able to safely take an Expedition to Colombia in November. It was a whirlwind of five days of exams, over 2500 patients, and hundreds of prescription glasses fitted. One man, who had lost an eye, is now on track to have an eye replacement. So grateful to Dr. Larcabal and Dr. Shaw-Mcmin for their volunteer hours, equipment and care, surviving the edge of a hurricane and the Colombian heat!

## Peruvian Christmas Expedition!

Another tender miracle opened up around Christmas with a Family Expedition to help a Women's Shelter, Remar, outside of Cusco, Peru. 52 women and their children, all having gone through unimaginable trauma, had found a safe place here at the family home called Remar. This haven was in serious need of repairs, however, so this family expedition got to work!

*"Our work was a string of small coincidences that together was a miracle."*

This worker-bee group undertook the task of fixing the kitchen, the first priority for us because the women were cooking on the ground. The group was shocked to discover the women had no running water, but one of the men in our group was a plumber. He knew exactly what was needed and plumbed everything by the time they left! In addition, the Expedition Leader, Celeste Bain, was able to share the healing resources she had recently been translating at work, addressing the very traumas many of these women and girls were facing. Each day included miracles of converging coincidences. THAT is the spirit of an ECH Expedition. We hope countries open up in 2021 so we can continue work like this.





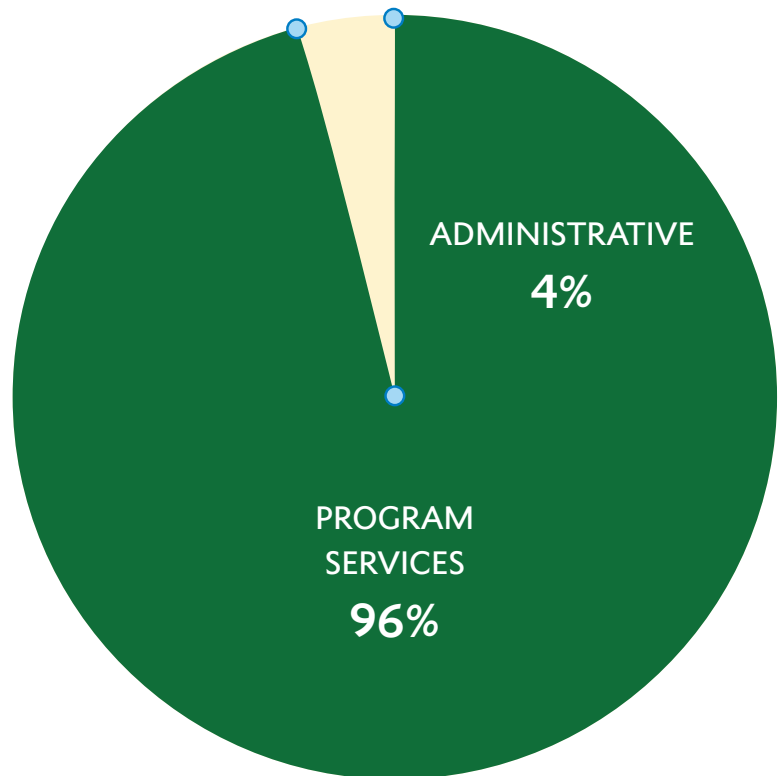
# 2020 ECH FINANCIAL SUMMARY

**D**UE TO THE WORLDWIDE PANDEMIC, the Foundation experienced severe financial challenges—and because of the generosity and kindness of donors, the Foundation continued to report a modest surplus of revenue over expenses. Total revenue for the year was about one-half of what it was in 2019—and because of the conservative decisions and the low overhead of the Foundation, expenses were down approximately 50%.

## Two other items of note:

- 1) Because of the conservative philosophy of the Foundation, all employees in the US and abroad remained employed throughout the entire year
- 2) The Foundation was able to apply for and receive significant financial grants.

We're happy to report that the Foundation finished 2020 in a strong financial position—and is committed to returning to robust financial support of its mission in 2021!





# WHO WE ARE!

## THE EAGLE CONDOR HUMANITARIAN TEAM:



### EXECUTIVE COMMITTEE:

*President:* Brent Bell

*Vice President:* Jan Felix

*Secretary:* Karen Timothy & Tanya Mealey

*Treasurer:* Scott Jolley

### MEMBERS OF THE BOARD:

Celeste Bain

Brent Bell

Rebecca Cressman

Douglas Crockett

Jan Felix

Keith Johnson

Scott Jolley

Alfred Kessler

Anadine Marshall

Tanya Mealey

Randy Moore

Rob Moore

Carol Nelson

Juan Pita

Valerie Salin

Terrylynn Skelton

Mike Taylor

Karen Timothy

### UTAH OFFICE STAFF:

*Director of Operations:* Laura Chabries

*Expedition Coordinator:* Missy Webster

*Medical Expedition Director:* Jan Felix

### IN-COUNTRY TEAM:

#### Self-Reliance Trainers:

*Cajamarca, Peru:* Moises Mejia

*Piura, Peru:* Jorge Sosa Ramirez, Victor Chunga,  
Arnold Chunga

*Libertad, Colombia:* Moises Mejia

#### Children Centers Coordinator:

*Jesus, Peru (Rays of Hope):* Diana Milagros Mejia

#### Children Center Partners:

*Turbaco, Colombia (Semillas de Amor):* Uris De Voz

#### ECH Expedition Project Coordinator:

Wilfredo Sanchez

### COMMITTEES:

*Child Welfare:* Laura Chabries

*Communications/Marketing:* Missy Webster

*Expeditions:* Jan Felix

*Finance:* Carol Nelson, Brent Bell, Scott Jolley

*Interns:* Laura Chabries & Missy Webster

*Self-Reliant Training:* Peru Team, Missy Webster

### CONTACT:

801-263-2000

info@eagle-condor.org • www.eagle-condor.org



Chakana and Condor as our symbol as we bridge cultures. We'd like to give **special thanks to our donors for making these cultural bridges possible.**

## THANK YOU TO OUR DONORS!

**ECH LOGO:** The Condor represents the people of the South and the Incan "Chakana" represents bridging heaven and earth. Today, Eagle Condor uses the



“There was something so sweet and tender about those we served on our project in Peru. Each day our work was a string of small coincidences that together was a miracle.”



**EAGLE CONDOR**  
HUMANITARIAN