



# Northeast Colorado Regional Vision Report



**Envisioning Our Tomorrows So We  
Can Advocate Today!**

# Table of Contents

**January 2008**

Comments from Board Chair.....	4
Overview of Project.....	6
Overview of Findings.....	7
The 20 Year Vision .....	12
At The End of the Day.....	17
Project Members.....	21
Appendix .....	23

*Thank you to our advertisers shown throughout the publication for their support in getting this report completed.*

---

# Comments From Board Chair

*The Northeast Colorado Regional Visioning Project was a grass roots effort where citizens were able to provide input into the future through town hall meetings, focus groups, electronically through Blogs, one-on-one conversations and on line surveys and through printed materials.*

*The Board of Directors of Progressive 15 knows that by working together within the region and identifying those things that we can all support, we will be stronger in our advocacy so that our region will be more economically viable and the quality of life for the citizens will be enhanced.*

*The following pages outline the findings of these efforts.*

David Foy

Chairman of the Board

---



# Cripple Creek & Victor Gold Mining Company

CAR EN**G**INES

C**O**MPUTERS

CEL**L**PHONES

D**E**NTISTRY



100 North 3rd Street  
P.O. Box 191  
Victor, CO 80860  
719.689.2977 (T)  
719.689.3254 (F)

*Gold: It's not just for jewelry!*



ANGLOGOLD ASHANTI  
ANGLOGOLD ASHANTI (COLORADO) CORP

7400 East Orchard Road  
Suite 350  
Greenwood Village, CO 80111  
303.889.0700 (T)  
303.889.0707 (F)

CC&V operates 24 hours a day, 7 days a week. We are proud of our exemplary safety record, our concurrent reclamation program, and our involvement in the community.

# Overview of Project

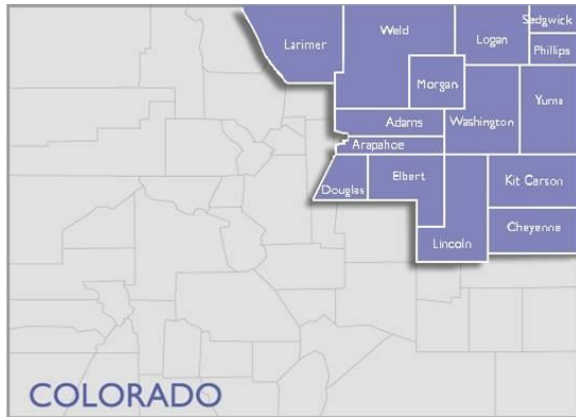
**Many Backgrounds      Many Voices      One Vision**

The 15 counties in Northeast Colorado that are part of the Progressive 15 membership can have a vibrant and prosperous future, but to prepare, we must honestly and objectively decide what that future is to be. We must answer the tough questions and we must work together.

This report is not meant to be a replacement for all the work that individual towns, cities and counties have already completed. Nor is it intended to replace the work of the associations, groups or entities that have been focusing on their particular issues. In fact, no laundry list of projects will be produced.

This report is focused on ideas that were gleaned as being opinions held by all parts of the region and recognizing that while differences will exist and we can focus in on the things of mutual agreement. Before the process was over we had over 500 contacts for input.

Progressive 15's hope is that this document will be used as a guideline for entities within the region as they complete their own visioning processes and strategic planning. Progressive 15 also hopes that elected officials and state & federal agencies will look at the report as a resource in developing policy and/or legislation so as to support our efforts for economic vitality and quality of life in the region.



# The Findings

Items of Greatest Concern:

Seven topic focused meetings were held over the summer of 2007. The topics covered were:

1. Agriculture
2. Infrastructure
3. Economic Opportunity
4. Community Development
5. Health Care
6. Education
7. Government

From the topic focused meetings it became clear early on, that even with varied topics the issues still remained the same.

Best Features of Region:

- **Quality of Life**
- **Growth in “Green” Technologies**
- **Educational Opportunities**
- **Community Safety**
- **Communications Technology**



## 1. Agriculture sustainability

## 2. Water Limits

## 3. Increasing Costs

## 4. Presence of competition – both internal and external – as opposed to cooperation

Most important for the future:

- **Meeting Local Needs Locally**
  - **Renewable Energy**
  - **Attracting Retirees**
- **Attracting and Retaining Young People**
- **Changes in Educational Needs**
  - **Health Care Changes**
- **Meeting Transportation Needs**
  - **Water and Agriculture**

Next we look at the surveys, town hall meetings and one-on-one conversations. They showed the following:

The **Greatest Strengths** of the region were identified as:

Environment  
Parks & Recreation  
Education  
Public Safety  
Community Diversity, Character, Feel

The **Greatest Concerns** for the region were:

Employment  
Economic Development  
Arts & Culture  
Housing

Items that would have the **Biggest Impact** on economic prosperity and quality of life in the Northeast Colorado region in the next 25 years:

Availability of Water  
Availability of Jobs  
Quality of K-12 education  
Growing local entrepreneurs  
Business Recruitment  
Preservation of Agriculture

  
Correctional **Healthcare** Management

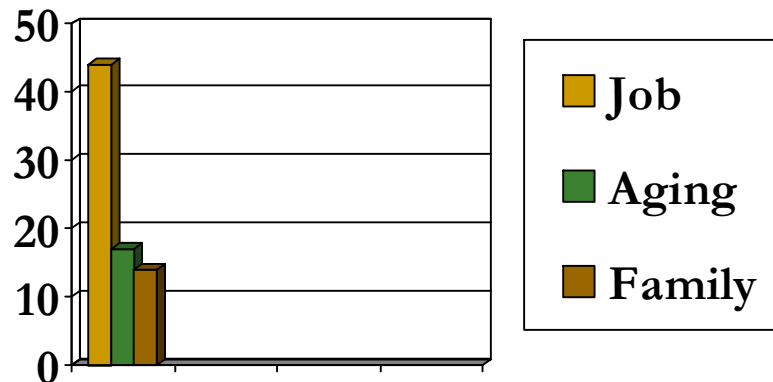


**Micheal L. Acree**  
Account Executive



8484 South Valley Highway, Suite 250, Englewood, CO 80112  
Phone: 720.229.1661 ■ Fax: 303.706.9068 ■ Cell: 303.880.7253  
[www.jailcare.com](http://www.jailcare.com) ■ E-mail: [mike.acree@jailcare.com](mailto:mike.acree@jailcare.com)

- The survey asked what would cause the respondent to move away from the region.

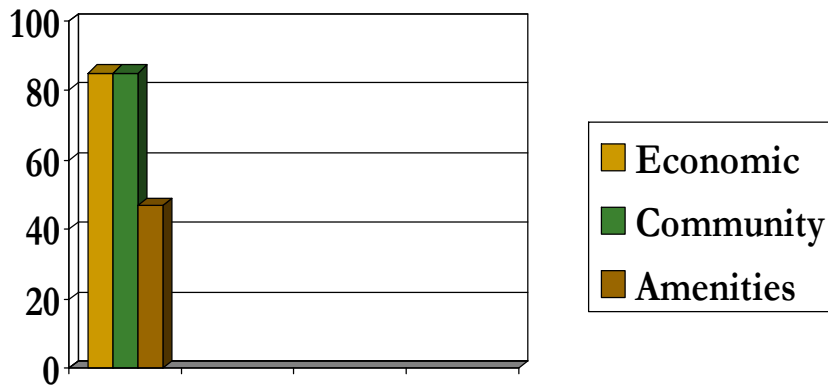


**MORGAN COUNTY**  
economic development corporation

- Located 80 miles from Denver Metro Area and Denver International Airport
- Pro-Business Attitude
- Enterprise Tax Zone Area
- Rail and Interstate Access Throughout the County
- Skilled Workforce-Community and College Training Services
- Affordable Buildings and Sites
- 3 Industrial Parks
- Great Quality of Life

231 Ensign Room B-102 • Fort Morgan, CO 80701  
970-542-3527 • 800-522-4333 • Fax: 970-542-3528  
[www.morgancountyinfo.com](http://www.morgancountyinfo.com)  
[mcedc@morgancountyinfo.com](mailto:mcedc@morgancountyinfo.com)

- Next the survey asked what 3 things most impact your decision when selecting a town/area to live?






## Let CHM take the pain out of inmate healthcare

Everyone deserves exceptional healthcare services. At Correctional Healthcare Management, we specialize in providing cost-effective, quality inmate healthcare to correctional facilities across the country.

Our comprehensive medical and mental health services allow us to tailor medical programs to specifically meet the healthcare goals of every facility. Our services include:

- Nurses & physicians
- Dental care
- Mental health programs
- On-site pharmacy programs
- Emergency Services
- Health Screenings
- Comprehensive physical exams
- Lab & x-ray services
- Utilization management
- Risk management
- And much more

**To serve and provide**  
 To find out how CHM can take the pain out of inmate healthcare please visit us on our Web site at [www.jailcare.com](http://www.jailcare.com) or call toll free at 866.CHM.JAIL.



# Survey Respondent Characteristics

- Most respondents were long time residents of the region – 59% over 10 years
- Most planned to stay in the region
- Overall they rated their communities' livability as “good”.
- 47% felt they had “moderate impact” in making their community a better place
- They were active in public affairs – 86% has attended a public meeting or contacted an elected official
- Half were between 51 and 65
- 99% were Caucasian
- They were highly educated
- Respondents came from all 15 counties with highest % from Logan and Morgan counties



- 
- Grant Oversight and Reporting
  - Facilitation, Visioning and Strategic Planning
  - Team Building & Employee training and Community Leadership Programs
  - Non Profit Administration
  - Feasibility Studies, Surveys, Operational Plans

Ft Morgan - 970-768-2230 or [cathy@sagestrategies.biz](mailto:cathy@sagestrategies.biz)

---

# The 20 Year Vision



4 Key Focus Areas

---



# Preserving Our Agriculture Roots

- Cooperative Rural-Urban efforts to maintain adequate water in region
  - Local land use plans encouraging native species
  - Conservation
  - Regional water authority-water banks – water coops
  - Water Storage
  - Incentives to lease rather than sell water
  - Ground water monitored in real time
  - Timely resolution of water issues
- Development of Renewable Energy
- Education on the value of agriculture
  - Food, Fiber
  - Open Space
  - Carbon Credits
  - Renewables
- Agriculture producing/growing product – developing it and then marketing it
- Continued education on new technologies, trends and options
- Diversification of crops and exploration of optimum crops, cultivation techniques and marketing techniques more suited to arid climate
- Make sure regulations don't come with unintended consequences and are based on sound scientific findings
- Value Added Agriculture – everything produced in agriculture can be put to use



# Regional / Internal Cooperation

- Rural – Urban Cooperation to enhance Progressive 15 region's political effectiveness
- Recognize and develop the common economy
- Local governments partnering to share services, equipment and costs
- Land use planning requires local, regional and statewide perspectives
- Identification of locally-controlled solutions, pooling of resources and sharing of benefits to meet the region's energy needs
- Identify problems that have the potential to be resolved on a multi-entity basis
- Regional leadership will become increasingly important
- Local control can co-exist with regional and state policies



*"The future of Colorado lies in the ability for its citizens to work together to move into the future – which is no longer a local economy, but a global economy. This visioning process is the first step in that effort."*

Patricia Vice, Executive Director, Lincoln County Economic Development

# Blending Our Heritage With Our Future

- Occupations, recreation, education and healthcare will support and promote the needs of young families
- An atmosphere will be created that provides retired individuals with access to recreation, transportation, employment and healthcare, and that helps them develop bonds to their community
- Preserving our historical footprint and community character for both economic and institutional memory
- Recognizing the diversity of our citizens and embracing and engaging all segments of our population
- Blue Skies, Open Space, Clean Water and Fresh Air have served us well and can be part of the solution for statewide goals
- Agriculture in our region provide some of the lowest cost food and fiber in the world and now can also serve the State as we look at a “Green” economy
- Reduction in Rural representation creates opportunities to educate and partner with our urban legislators
- Neighbors helping Neighbors will continue to be the norm





# Sustainable Economy

- Equal and affordable access to communications technology across the region
- Diversity in economic base
- Growing local entrepreneurs
- Expansion of tourism in region
- Support downtown historical districts
- Development of Wind, Solar and Bio Diesel
- Development of Value Added Agriculture
- Small business will be supported in creating opportunities that allow them to compete in a global economy
- Education directly linked to job opportunities in the region
- Health care will be an economic driver for the region
- Infrastructure in place to support economic sustainability
  - Transmission lines
  - Roads
  - Water
  - Rail
  - Air
- Affordable housing in place
- Recreational amenities, cultural activities, open space and parks in place to attract workers
- Regulations and laws that support growth and innovation in business
- Recruitment of business that is compatible with resources of the region
- Supporting expansion of local business

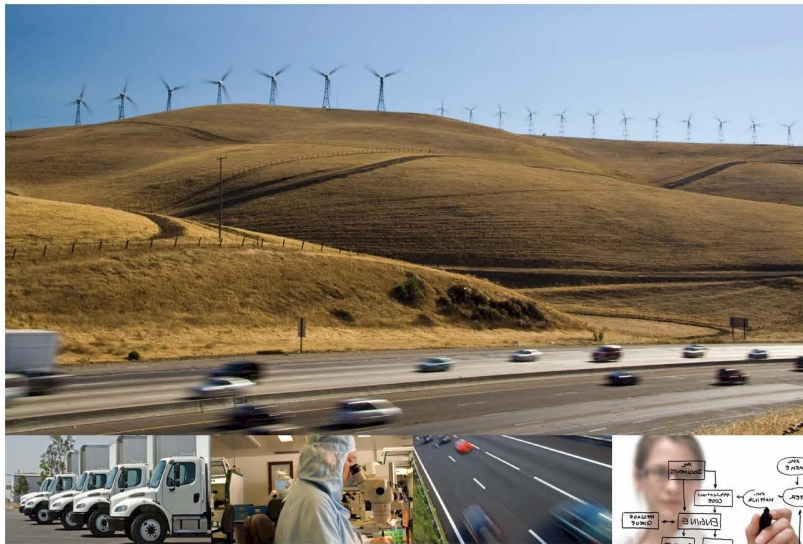


# At The End of the Day.....

## ■ We Need To:

- ❑ Recognize that change is inevitable and work to be pro-active
- ❑ Recognize we are now in a global economy
- ❑ Recognize that strong local, regional and state leadership will be needed
- ❑ Recognize that partnerships and cooperation both internally and externally will be needed to secure our future

47% of survey respondents felt a regional vision and regional cooperation had a “big impact” on their county. Another 38% felt it had a “moderate impact”.



*securing the benefits of trade*

**PORTS-TO-PLAINS**  
TRADE CORRIDOR

5401 N. MLK #395 • Lubbock, TX 79403  
www.PortsToPlains.com • (806) 775-2338

Transportation creates jobs. It's been that way throughout history; be it seaports, rivers, railroads or the roadways of today, economic growth is a natural byproduct of our highways and byways. And that's what the Ports-to-Plains Corridor is all about - bringing new jobs and opportunities to communities throughout the region.

A global economy means a world of opportunities for the communities along the Ports-to-Plains Corridor, and our success invariably depends on our connection to these new markets. Ports-to-Plains aims to provide that connection, while also improving highway safety and creating a secure, efficient corridor in which to move freight.

By developing the infrastructure to support the region's growing renewable energy market, Ports-to-Plains will help lead the charge in reducing our dependency on foreign oil - an approach that will inevitably lead to more investment in wind energy and biofuels. That means more investment in our communities. The result? More jobs for the people of our region.





## Colorado's Livestock Association for 53 years

***Strengthen and Unite animal agriculture in Colorado for future generations***

822 7<sup>th</sup> Street, Suite 210

Greeley, CO 80631

970-378-0500

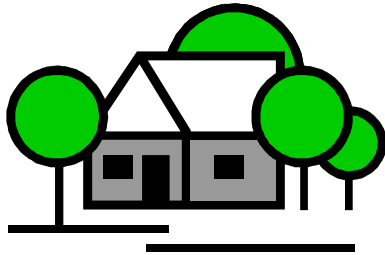
[www.coloradolivestock.org](http://www.coloradolivestock.org)



In addition to food livestock can provide opportunities for composting and methane digesting.

*"Vision is important for anyone, so that we know the direction we want to travel. This report will help us insure that the people of Northeastern Colorado have a voice in the affairs of the state."*

Jim Engelker  
Counselor/DAC  
Platte Valley School District  
Re-3  
Ovid, CO



## **Northeast Colorado Housing, Inc.**

Home Ownership Program  
Home Ownership Education Program  
Single Family Owner Occupied Rehabilitation Program  
Home Modification Program  
Housing Development  
Property Management

807 Main Street – Fort Morgan, CO  
970-542-1221



During the topic focused meetings it was noted the rural housing development helped in bringing the youth back to their communities.



# Project Participants

- Laura Teague, Teague Diversified
- Kenny Rogers, Colorado Cattlemen
- Maye Gene Lee, Lincoln Manor Bed & Breakfast
- Don Ament, Ament Farms
- Clark Bernhardt, Town of Julesburg
- Andrea Anderson, Yuma County Economic Development
- Joyce Evans, Northeast Colorado Housing
- Doug Anderson, Northern Colorado Rural Development Association
- Kari Linker, Morgan County Economic Development
- Denise Selders, Colorado Division of Housing
- Patricia Vice, Lincoln County Economic Development
- Tim Edgar, Logan County Chamber of Commerce
- Paula LaPorte, Centennial Mental Health
- Brandy Whitlow, HealthOne Outreach
- Patsy Schultz, Washington County Nursing Home
- Greg Ganselau, Platte Valley Medical Center
- Frank Schneider, Colorado Plains Medical Center
- Betty Summers, RE-1 Valley School District – Sterling
- Bill Pile, Platte Valley RE3 District – Ovid
- Jim Engelker, Platte Valley RE3 District – Ovid
- Michele Haney, Morgan Community College
- Bob Churchwell, City of Burlington
- Greg Etl, Department of Local Affairs
- Debbie Carlstrom, Rep Marilyn Musgrave
- Melissa Clapper, Burlington Chamber
- Deni Coryell, City of Burlington
- Debbie Knudsen, Town of Cheyenne Wells
- Norma Pankratz, CCA and Burlington ED
- Cathy Smotherman, State Bank of Wiley
- Rick Hanger, Division of Housing
- Antoinette, Division of Housing
- Linda Duerst, Duerst Machine Works
- Shauna Schreiter, American Mortgage Alliance
- Barb Young, Equitable Savings

- Debbie Zwirn, Logan County Commissioner
- Tony Carlson, Morgan County Commissioner
- Jon Becker, Morgan County Commissioner
- Cheryl Scofield, USDA-Rural Development
- Muriel Nelson, Town of Julesburg
- Patricia Vice, Lincoln County Economic Development
- David Foy, Washington County Commissioner
- Judy Giacomini, Northeastern Junior College
- Scott Temple, Adams County
- Chuck Rech, CW Rech & Co
- Del Beattie, Town of Limon
- Gene Putnam, City of Thornton
- Mac McGraw, Senator Ken Salazar
- Danyel Brenner, Senator Wayne Allard
- Kay Schmidt, City of Burlington
- Darlene Scott, Office of Economic Development
- Debbie Thomas, First National Bank, Burlington
- Karen Harkin, CHFA
- Linda Rae Schaal, Schaal Drilling
- Helen Newberry
- Anna Wheeler
- Kim Hubbard, Pioneer Valley/Healthy Living Systems
- Kristine McClain, CHFA
- Julie Scruby, USDA-RD
- Jane Winslow, USDA-RD
- Cathy Shull, Progressive 15
- Survey, Blog & One-on-One Respondents

A big thank you to the people listed above. Over 200 invitations to participate were sent out and these people gave willingly of their time and expertise. Our hope is that we have every name listed of the participants who took their time to attend meetings and answer phone calls. If a name was left out it was done so inadvertently.

Facilitators for the Process:

Blue Key Group - Loveland & Sterling

Non Profit Doctor – Fort Collins



*Supporting education is  
just plain **smart.***

At Qwest®, we believe in the power of education to change lives and enrich communities. We put our support behind pre-K through 12 education with initiatives that ensure students are ready to learn, teach parents their important role in student learning, and help teachers acquire new tools and skills. **From fostering community involvement to facilitating investment in schools, we know how to hit the books.** To find out more visit [qwest.com/community](http://qwest.com/community).



Copyright © 2006 Qwest. All Rights Reserved.

# Appendix

## ■ Photo Credits

- Cover Photo .....Northeastern Junior College
- Page 7.....Lilias Jarding
- Page 12.....K.C. Electric
- Page 13.....Northeastern Junior College
- Page 14.....City of Burlington
- Page 15.....K. C. Electric
- Page 16
  - (top).....Northern Colorado Medical Center
  - (middle).....Northeastern Junior College
  - (bottom).....City of Burlington
- Page 19.....Northeastern Junior College
- Page 20.....K.C. Electric

## ■ Contact Information

**Progressive 15**  
**Cathy Shull, Executive Director**  
**629 Warner Street**  
**Fort Morgan, CO 80701**  
**Phone: 970-867-9167**  
**Cell: 970-768-2230**  
**Fax: 800-521-9413**  
**E mail: [cathy@progressive15.org](mailto:cathy@progressive15.org)**  
**URL: [www.progressive15.org](http://www.progressive15.org)**





# Transmission investment will boost renewable energy development in Northeastern Colorado

**It's easy to see that renewable energy** brings economic vitality to Northeastern Colorado.

And Tri-State, your electric co-op's wholesale power supplier, strongly supports the development of Colorado's renewable energy resources.

Tri-State is working with wind energy developers to interconnect new projects into the transmission grid. But today, the existing electrical transmission system is at capacity.

There is a solution. Your co-op's **Eastern Plains Transmission Project**, a proposed network of transmission lines throughout eastern Colorado, will have sufficient capacity to carry large amounts of renewable energy to electric consumers.

*Thank you, Progressive 15, for supporting the co-ops in this important project. Together, we will open a door to a new energy economy in rural Colorado.*

*To learn more about the EPTP, visit [www.tristategt.org/rp](http://www.tristategt.org/rp) or contact Lee Bougbey at 303-254-3555, or [lbougbey@tristategt.org](mailto:lbougbey@tristategt.org).*



**TRI-STATE**

Generation and Transmission  
Association, Inc.

P.O. Box 33695 • Denver, CO 80233

A Touchstone Energy Cooperative



[www.touchstoneenergy.coop](http://www.touchstoneenergy.coop)

Wholesale power supplier to 44 electric cooperatives in Colorado, Nebraska, New Mexico and Wyoming.