

Festival  
Classica

PINK FLOYD

# THE DARK SIDE OF THE MOON SYMPHONIQUE

Benefit evening

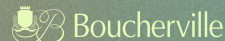
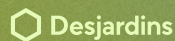
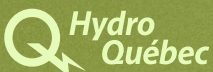
16th edition

27 May 2026 – 9 p.m.

Théâtre Maisonneuve

Montréal

In collaboration with



# The Dark Side of the Moon symphonique

Cocktail at 7 p.m.  
\*Donor-only tickets

Master of ceremonies: **Jocelyn Lebeau**

## Program

(60 mins without intermission)

**Pink Floyd, The Dark Side of The Moon (1973)**

Orchestral arrangements: **Peter Brennan, Simon Fournier**

*Speak to Me*

**Nick Mason**

*Breathe*

**Roger Waters, Richard Wright, David Gilmour**

*On the Run*

**R. Waters, D. Gilmour**

*Time*

**N. Mason, R. Waters, R. Wright, D. Gilmour**

*The Great Gig in the Sky*

**R. Wright**

*Money*

**R. Waters**

*Us and Them*

**R. Waters, R. Wright**

*Any Colour You Like*

**N. Mason, R. Wright, D. Gilmour**

*Brain Damage/Eclipse*

**R. Waters**

---

## Artists

### ROCK BAND

**Lulu Hughes**, lead singer

**Raphaël D'Amours**, guitar

**Samuel Blais**, saxophone

**Marie-Jeanne Éthier**, keyboards

**Marc-André Drouin**, bass

**Geoffroy Doyon**, drums

### Orchestre du Festival Classica

Conductor: **Simon Fournier**

General director: **Marie-Anne Rozankovic**

### Ensemble ArtChoral

Artistic director: **Matthias Maute**

Stage management: **Gabriel Vasiliu**

Assistant stage management: **Isabeau**

**Proulx Lemire, Marie-Christine Lance**

Lighting design: **Danny Harvey,**

**Lumia design Lumière**

Sound engineering: **Guillaume Proulx**

Technical direction and facilities

management: **Jérémy Room,**

**FX Productions**

# About

---

**Join us for this not-to-be-missed benefit concert evening in support of Festival Classica!**

More than fifty years after its release, Pink Floyd's *The Dark Side of the Moon* remains one of the most influential albums in the history of popular music. Under the direction of Simon Fournier, the Orchestre du Festival Classica, Ensemble ArtChoral, and guest singer Lulu Hughes perform a powerful and evocative reinterpretation of this legendary album that draws you into the light... and beyond, to the dark side of the moon.

# A word from Alain Dugal

President of Festival Classica's Board of Directors

---

Ladies and gentlemen,

I am immensely proud to bid you welcome to this benefit evening marking the official launch of the 16th edition of Festival Classica.

Tonight, we are honoured to be able to offer you a production of truly impressive scale: a symphonic version of *The Dark Side of the Moon* involving orchestra, choir, and the inimitable voice of Lulu Hughes. Astronauts have only recently viewed the moon's hidden face. We now invite you on the same journey, but in music, for an experience both mythical and unforgettable.

Today, as the cultural world must demonstrate unceasing resilience, ingenuity, and determination, we pursue our mission with passion and conviction. More than ever, the task at hand is to create, bring people together, and make music live. This is a challenge we meet together, thanks to the invaluable commitment of partners and patrons like you, who make our vision possible. In this 16th edition, Festival Classica's programming shines in all its breadth and richness: from intimate recitals to large-scale productions, audiences will be treated to unforgettable artistic experiences. Thanks to the creative drive and demanding artistic standards of our General and Artistic Director, Marc Boucher, the public will have the privilege of hearing original creations, premieres, and major works revisited with audacity and finesse. These musical rendezvous will take place at several locations in Montérégie and Montréal, a reflection of our deep roots in the community and our commitment to spreading the joy of music.

Tonight, Festival Classica and its board of directors welcome you to this festive atmosphere in which artists and patrons join forces to celebrate the beauty and power of art. *Breathe, breathe in the air...* and let the music carry you away: the journey to the dark side of the moon starts now.

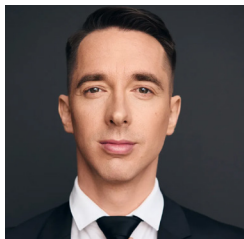
You have our profound thanks for your presence and your support.

I look forward to the pleasure of seeing you at one of the many concerts we have programmed.

# Artists

---

**Jocelyn Lebeau**  
*Master of ceremony*



---

**Lulu Hugues**  
*Lead singer*



---

**Raphaël D'Amours**  
*Guitar*



---

**Samuel Blais**  
*Saxophone*



---

**Marie-Jeanne Éthier**  
*Keyboards*



---

**Marc-André Drouin**  
*Bass*



---

**Geoffroy Doyon**  
*Drums*



---

**Simon Fournier**  
*Conductor, arranger*



---

**Marie-Anne  
Rozankovic**  
*General director,  
OFC*



## **Ensemble ArtChoral**

### **Sopranos**

Pascale Boilard

Julie Ekker

Emma Hannan

Florence Tremblay

Lea Weilbrenner

Ellen Wieser

### **Altos**

Alexandra Asher

Cristine Cimon-Fortin

Gabrielle Cloutier

Ghislaine Deschambault

Rosalie Lane-Lépine

Claudine Ledoux

### **Tenors**

Jean-Sébastien Allaire

Kerry Bursey

Aldeo Jean

### **Basses**

Marc-Antoine D'Aragon

Alain Duguay

Alexandre Duguay

Guillaume St-Cyr

# Orchestra

---

## Orchestre du Festival Classica

### First violins

Marie-Anne Rozankovic, concertmaster  
Zoé Dumais, associate concertmaster  
Veronica Ungureanu  
Anastasia Virlan  
Elsa Barozzi

### Second violins

Olga Semionova, principal  
Brigitte Dajczer, associate  
Catherine Beaudry  
Fiona Marchetto

### Violas

Samuel Hogue, principal  
Chung Han Hsiao, associate

### Cellos

Loredana Zanca, principal  
Aidan Fleet, associate

### Double bass

Pierre-Alexandre Maranda, principal

### Flute

Mathilde Vaillancourt, principal

### Oboe

Dylan Pinette, principal

### Clarinet

Julien Deguire, principal

### Bassoon

Mariana Olaiz-Ochoa, principal

### Horns

Mathilde Lepage, principal  
Sarah Amahrit

### Trumpets

André Thouin, principal  
Danielle Carbert

### Trombone

Yori Lang, principal

### Percussion

David Therrien-Brongo, principal  
Léo Guiollot, associate

# Festival Classica team

General and Artistic Director: **Marc Boucher**

Associate Director: **Julie Valois**

Director of Communications and Social Media Manager: **Catherine Loiselle**

Administrative Director and Box Office Manager: **Nathalie Houde**

Production Director, Indoor Performances: **Gabriel Vasiliu**

Production Director, Lyric Opera Productions (NOM): **Isabeau Proulx Lemire**

Production Director, Outdoor Concerts: **Dominique Arcand**

Content Coordinator, Website and Programs: **Marie-Christine Lance**

Contracts Manager and Volunteer Coordinator: **Martine Bergeron**

Box Office Assistant: **Carmelle Gauvin**

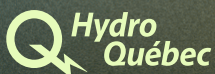
16th edition

May 22 to June 14, 2026

[festivalclassica.com](http://festivalclassica.com)

# CONCERTS THAT HIT THE RIGHT NOTE!

In collaboration with



[Discover the full program!](#)