

- 2 Where to Buy Your First Home
- 3 Cooling Assistance
- 4 Microchip & Vaccine Clinic for Pets
- 5 Patient First 45th Anniversary
- 6 Annandale Real Estate The Only Constant
- 7 Insurance Insights
- 8 Nature Calls
- 9 Summer Fun
- 10 VIEW ON NATURE Not a Swan Song
- 12 The Garden Path Fencing
- 14 Meet the Artisans X-mas in July
- 16 The Golden Years Avoiding Loneliness
- 17 The Annandale Food Pantry Needs Help
- 19 Fishing in Fairfax Co.
- 21 Celebrate National Night Out
- 22 UnCovered: The Humble Oyster
- 24 Lambros Goldsmith
- 26 The Police Beat Traffic Safety
- 28 Registration Open for the Annandale Parade
October 24, 2026

United States Census Bureau Reports America Counts: Where to Buy Your First Home

By: Earlene K.P. Dowell and Lynda Lee



Helping You Decide Where to Buy a Home

Are you a new parent ready to buy your first home? Or a retiree seeking to downsize and purchase a place in a quiet community out of state?

Potential homebuyers may have some nonnegotiable criteria in mind like well-funded schools and access to quality health care, public transportation, libraries and shops.

How do they decide where to even start looking?

The U.S. Census Bureau's suite of data and analytical tools can help.

Go to: https://www.census.gov/library/stories/2026/06/where-to-buy-a-home.html?utm_campaign=20260610aco&utm_medium=email&utm_source=govdelivery

Take its Public Sector statistics, for example,

which provide comprehensive data on the finances, employment and structure of governments, including annual revenue, expenditures, debt and assets. They detail the scale of public employment, payrolls, tax collections, and specialized data on public pension systems and school districts.

When you're in the market for a neighborhood with well-funded schools, you can use these stats to find out local revenue (versus state and federal funding) per pupil, indicating a community's capacity to support its schools.

Census Bureau Tools Can Show Homebuyers Areas Where They May Want to Live

Are you a new parent ready to buy your first home? Or a retiree seeking to downsize and purchase a place in a quiet community out of state?

Potential homebuyers may have some nonnegotiable criteria in mind like well-funded schools and access

(continued page 2)

America Counts: Stories Behind the Numbers

(continued from page 1)



to quality health care, public transportation, libraries and shops.

How do they decide where to even start looking? The U.S. Census Bureau's suite of data and analytical tools can help.

Take its Public Sector statistics, for example, which provide comprehensive data on the finances, employment and structure of governments, including annual revenue, expenditures, debt and assets. They detail the scale of public employment, payrolls, tax collections, and specialized data on public pension systems and school districts.

When you're in the market for a neighborhood with well-funded schools, you can use these stats to find out local revenue (versus state and federal funding) per pupil, indicating a community's capacity to support its schools.

Other Census Bureau homebuyer resources:

- The Building Permit Survey, which shows housing supply trends.
- Survey of Construction, which provides characteristics and sales of single and multifamily housing units.
- Census data tools, like Census Business Builder (CBB) and Job-to-Job (J2J) Flows Explorer can help you visualize this information by providing key data about the landscape in a user-friendly format.

How to Use the Census Business Builder

Take a retired couple carefully planning the purchase of their

“forever home.” They start their search with a must-have list:

- Suburban setting.
- Near a major city.
- Close to restaurants, sports and entertainment.
- Access to quality health care.

The CBB tool enables them to explore demographic, economic and social characteristics like median household income, population, types of retail establishments and a demographic profile of the local workforce. Figure 1 displays the tool's landing page, where users can access the dashboard and customize or filter the data.

Job-to-Job Flows

While some buyers choose a location based on commuting convenience or proximity to jobs, others may be focusing on the best place to retire.

The Census Bureau's J2J Flows Explorer, often used by workforce planners and economic developers, can help homebuyers at any age or stage.

For example, individuals planning for retirement can use it to identify areas with strong or growing employment in sectors that support quality of life, such as health care, retail and service industries.

By examining employment trends by industry (i.e., Health Care and Social Assistance, Retail Trade, and Accommodation and Food Services) and geography, users can gain insight into locations that may offer the amenities and services key to retirement planning.

Those age 55 and over, still working but considering relocating, can also use the tool to explore broader employment patterns and economic activity to help them decide where they may want to move next.

The top destination states for people 55 and older in 2024 were, not surprisingly, the country's most populous ones: California, Texas, Florida and New York. They were followed by other high-population states like Illinois, Pennsylvania, North Carolina, Ohio, Georgia and Arizona.

Fairfax County

Cooling Assistance Programs



Cooling Assistance is a program designed to help keep vulnerable Fairfax County residents cool during the summer months. To be eligible, at least one household member must be: 60 or older, 5 or younger, or disabled according to Social Security, Medicaid or 100% Veteran’s Administration.

Applications for Cooling Assistance will be accepted from June 15 - August 15.

Cooling assistance can help with:

- Payment of electric bills to operate cooling equipment.
- Payment of security deposits for electricity to operate cooling equipment for accounts in danger of being disconnected or when a deposit is needed to begin service.
- Repair of a central air conditioning system or heat pump.
- Purchase of a whole-house fan, including ceiling or attic fans when there is no other working cooling equipment in the home.
- Purchase and installation, or self-pick-up, of one air conditioning unit (window or portable) for households when there is no other working cooling equipment in the home.

Applications for Cooling Assistance can be submitted in the following ways:

- Online: <https://www.commonhelp.virginia.gov/>
- Phone: Call the Enterprise Call Center at 1-833-522-5582.
- In Person: paper applications are available at all four DFS office locations
- Paper Application: Call 703-324-7500 to request an application be mailed to you. Paper applications are accepted by:
- MAIL: 12011 Government Center Parkway, Suite 232, Fairfax, VA 22035

- FAX: fax a completed application to (703) 653-1355
- EMAIL: DFSMycase@fairfaxcounty.gov
- IN PERSON: drop off at one of the four DFS office locations

Seniors Stay Cool Program

The **Senior Cool Care Program** is a program that helps low-income older citizens in our jurisdiction keep cool during summer months. This program does not provide financial assistance, but it provides additional cooling at home by providing air conditioning units, window air conditioning units or fans for eligible older adults, age 60 and older. The program runs May 1 through October 31, 2026. If you are interested in learning more about the program, please call the Aging, Disability & Caregiver Resources Line at **703-324-7948**

The Senior Cool Care Program is a public-private partnership sponsored by Dominion Energy and administered by the Virginia Department for Aging and Rehabilitative Services through the Fairfax Area Agency on Aging. Heating and cooling costs can be a significant strain on household budgets. There are several options for energy assistance programs:

Cooling Assistance helps keep vulnerable Fairfax County residents cool during the summer months. To be eligible, at least one household member must be: 60 or older, 5 or younger, or disabled according to Social Security, Medicaid or 100% Veteran’s Administration. Applications accepted June 15-August 15.

Fuel Assistance helps pay heating costs for eligible households. Applications accepted from the second Tuesday in October through the second Friday in November. Approvals are notified in December and benefits are paid out starting in January.

Crisis Assistance supports households facing a “no heat” situation, like broken equipment or a disconnection notice. Applications accepted November 1-March 15.



**Free transportation for Annandale-Springfield
seniors to local medical appointments**

7610 Newcastle Drive . Annandale 22003
703-941-1419 . shepherdsacas@vacoxmail.com

Vaccine and Microchip Clinic

Keep Your Pets Safe

Fairfax County Animal Services



The county's Pet Resource Center offers Fairfax County residents low-cost pet vaccinations and microchipping, without the added expense of a veterinary exam on August 5th from 9:00 am to 11:00 am

All clinics are first-come, first-served and are cash only.

Please bring your pet's vaccination records, if you have them. Proof of prior vaccination is necessary to obtain 3-year Rabies, 3-year DHPP, and 3-year FVRCP vaccines. If you do not have previous vaccination records, your pet(s) will be administered a 1-year Rabies vaccine and/or a DHPP or FVRCP that requires a booster in 3-4 weeks.

Clinic Information and Services

- ◆ Clinics are walk-up, and no pre-registration or appointments are needed.
- ◆ All clinics are cash only.
- ◆ Clinics are open to both dogs and cats.
- ◆ Dogs must be on fixed (non-extendable) leashes, and cats must arrive in secure carriers to help keep everyone safe and comfortable.
- ◆ Please note that only limited exams are provided at Vaccine and Microchip Clinics.
- ◆ Rabies Vaccination \$20
- ◆ DHPPi (dogs only) \$20
- ◆ FVRCP (cats only) \$20
- ◆ Microchip \$20
- ◆ Dog License \$10

Fairfax Center Fire Station 40
4621 Legato Road
Fairfax, VA 22030

Homelessness in Fairfax Co. Trending Upward

The total number of people experiencing homelessness in Fairfax County is trending upward since 2017, mirroring regional and national trends

The Metropolitan Washington Council of Governments released its most recent annual Point-in-Time Count of people experiencing homelessness today.

According to the data, there were 1,365 people experiencing homelessness in Fairfax County the night of the count (February 4, 2026). This is an increase of three percent (43 people) from the 2025 count in which there were 1,322 people identified as experiencing homelessness. The new Point-in-Time Count data continues an upward trend occurring since 2017, when the total count was 964 people; this is in line with national and regional homelessness trends.

The increase in 2026 is primarily driven by the higher number of adults accessing emergency shelters. The most significant increases occurred during the COVID-19 pandemic, when the total count increased from 1,041 people in 2020 to 1,310 people in 2023 – an approximately 26 percent increase in three years. Since then, the total count has increased by four percent, with 55 additional people counted.

Fairfax County Point-in-Time Count data is available on the Fairfax County Department of Housing and Community Development's Office to Prevent and End Homelessness website.

About the Point-in-Time Count: The Point in Time Count is required by the U.S. Department of Housing and Urban Development and is reported to the U.S. Congress to provide a nationwide estimate of homelessness, demographic information, service use patterns, and the capacity to house people experiencing homelessness.

Data from Fairfax County is also part of a regional analysis and annual report on homelessness by the Metropolitan Washington Council of Governments (COG). Concerned by the lack of regional data available, COG undertook the first effort to produce a Point-in-Time count of homeless adults and children in metropolitan Washington D.C. in 2001.

Opportunity Neighborhoods
10700 Page Avenue, Building B
Fairfax, VA 22030
Phone: 703-352-3269
Fax: 703-352-5088
www.FacetsCares.org
Connect with us... [f](#) [t](#) [e](#)

Patient First

Celebrates 45 Years of Physician-Led, All-in-One Care Across the Mid-Atlantic



Patient First is celebrating 45 years of service, marking a milestone that reflects decades of providing accessible urgent care to patients across the Mid-Atlantic. Patient First's distinctive green roof first appeared on the outskirts of Richmond, Virginia in 1981. It was built on a simple idea of providing friendly, convenient, and cost-effective medical care without an appointment, 365 days a year. Patient First's physician-led model gave patients access to a broad range of services under one roof.

In the 45 years since, Patient First has grown to 79 medical centers across Virginia, Maryland, Pennsylvania, and New Jersey, with more than 50 million patient visits over that period. From the beginning, Patient First centers provided on-site x-rays, laboratory services, and prescription medications available in one office. Care is led by physicians and physician assistants at each center, supporting a high level of clinical oversight and continuity. Over time, Patient First has expanded its services to include primary care, occupational health, and telehealth.

The commitment to accessibility was especially evident during the COVID-19 pandemic, when Patient First kept its medical centers open for in-person care while also launching telehealth services, ensuring patient access during a time of heightened need.

"Caring for generations of families and seeing patients I first treated years ago now bringing in their own children is a level of fulfillment that is difficult to match," said Dr. Cliff Walton, Medical Director of Patient First – Chester.

Dr. Walton's career reflects the long-term commitment shared by many within the organization. He joined Patient First in 1990 as a medical assistant while pursuing his education. After graduating from medical school in 1994, he continued working at Patient First while completing his residency training before becoming a physician with the organization in 1996. He has served as the Medical Director of the Chester center since 2004.

Patient First's culture of long-term commitment often spans generations. Kimberly Harmon, PA-C, a physician assistant at Patient First – Aberdeen, followed a path that began with her mother, Bonnie Schaffer, RN. Schaffer joined Patient First in 2001 as Director of Medical Support (DMS) at the Perry Hall Center and later served as DMS at the Aberdeen Center. Although she has stepped down

from her director role, Schaffer continues to care for patients as a nurse at Patient First – Perry Hall.

Harmon began her career with Patient First in 2006 in a front office role at the Perry Hall Center and went on to serve as a medical assistant, X-ray assistant, and lab assistant. After completing her physician assistant training, she joined Patient First as a physician assistant in 2013 at the Aberdeen office, where she continues to practice today.

Patient First's focus on patient care and long-term relationships has also been recognized across the region, earning 38 "Best Urgent Care," "Top Doctors," and "Top Workplace" awards in 2025.

Looking ahead, Patient First plans to continue adding services, adopting new technologies, and expanding into additional communities while maintaining its longstanding commitment to patient service.

As it has been since the beginning, the organization's guiding principle remains unchanged: putting patients first.

About Patient First: Open 8 a.m. to 8 p.m. every day of the year, including holidays. Patient First provides non-appointment urgent care for routine injuries and illnesses, primary care for patients who do not have a regular physician, as well as telehealth services. Patient First has on-site digital x-ray, on-site laboratory, and on-site prescription drugs.

Patient First in Annandale

7042A Little River Turnpike

Annandale 22003

patientfirst.com 703.343.7125

Patient First 45 years

Annandale Real Estate

THE ONLY CONSTANT IS CHANGE

Pat Sawhney, RE/MAX Realty Group



Another spring Market is wrapping up, heading into Summer. Typically, the market should have slowed down by now. However, there is still a pent-up demand for Housing that has continued for over 10 years. Buyers are taking time to make a decision, but they are buying, despite the interest rate challenges and the overall economy.

Houses that are selling are wisely priced to sell, are in popular neighborhoods, are renovated and neutralized for the most part. Whether this Market will continue all through the summer is an unknown. Part of the activity in this market is more open houses, and from time to time there are price reductions or properties that pop back on the market for one reason or another.

Investors are still out there seeking good below market buys, either to flip or to hold and rent out. Rents have gone up but now settling down a little bit.

Homes received as part of an estate, in the right price range, will sell to an owner occupant who can do their own work or to an investor.

Now I'm in my 51st year in this business that I love!

Pat Sawhney, RE/MAX Realty Group, 703-395-9214,
Senior Realty Specialist
RE/MAX Lifetime Achievement Award
patsawhney42@gmail.com
www.GetMovingWithPat.com



with the
**Annandale Boys & Girls
Club**

From Soccer to Wrestling and everything in between, ABGC is committed to provide our community with the best youth sports programs in the state of Virginia. Join the Summer Fun!

**abgc.org
(703) 941-ABGC (2242)**

Insurance Insights

How Business Interruption Insurance Can Protect Employees

By Virginia Kinneman



Let's say a fire damages your restaurant. Or a major weather event causes the roof to collapse on your office building. Often, the business will have to shut down while making repairs. This is often an inconvenience to both the owner and employees if they cannot work. This could mean a loss of income for the business and its workers.

Most businesses turn to their [commercial insurance](#) following instances like these. Many business

insurance policies can assist operations that have to stop temporarily. A core component of many policies is business interruption coverage. It can protect not just the business owner, but also employees.

How Business Interruption Coverage Works

Business interruption coverage follows a general idea. If you cannot operate your business, you cannot make money. Still, your financial obligations to others continue to weigh on the business. You might have bills to pay, after all. You can't ignore these costs, after all. That's where business interruption coverage can come in. It might help businesses cover residual costs until they can reopen.

The Benefit of this Coverage for Employees

Often, coverage will provide funds to help pay employee wages during the closure. This can benefit employees in several key ways.

- An employer can continue to provide employees with a paycheck during the closure. This can ensure the workforce can support themselves even while they cannot work.
- Business interruption coverage can also help ensure employee loyalty. If businesses can provide their

paychecks, workers likely won't have to get new jobs during the closure. This means they can return to work for you when you reopen. In many ways, providing wages during your closure can help improve turnover rates.

- Business interruption coverage might help the business not have to shut down at all during repairs. It can often cover temporary relocation costs, so the business can continue to operate in another location. This might prove a benefit, because it means employees can continue to work without the extended inaction of waiting for reopening.

The smart business owner should consider business interruption coverage a vital part of their employee benefits. However, keep in mind that business interruption coverage is not the only benefit your employees will need. Workers' compensation, health insurance and other protective benefits can often help employees both before and after temporary closures. If you need more information on your employee benefits, call our agency or explore our website.

Kinneman Insurance
 50 S Pickett St No. 20-A
 Alexandria, VA 22304
www.kinnemaninsurance.com. 703-832-8800

Virginia Kinneman, LUTCF
 Agency Owner
 Virginia@KinnemanInsurance.com
 Phone: (703) 823-8800

50 S. Pickett Street #20
 Alexandria, Virginia 22304
 1301 Vincent Place
 McLean, Virginia 22101

www.KinnemanInsurance.com

ANNANDALE
 SHOPPING CENTER

SERVING ANNANDALE SINCE 1957
 COLUMBIA PIKE & GALLOWS ROAD 703-256-2730
www.annandaleshoppingcenter.com

Nature Calls

How to Support the Flycatchers with Your Garden



Flycatchers have returned to Northern Virginia for the breeding season, including Great Crested Flycatchers, Willow Flycatchers, Eastern Wood Peewees, and Acadian Flycatchers. These migratory birds are important indicators of environmental health, and their continued presence reflects the quality of habitat available in our region. While flycatcher populations have declined due to habitat loss, many still find suitable nesting and feeding areas here.

Flycatchers rely entirely on insects for food, including bees, wasps, flies, moths, caterpillars, and beetles. Because they do not visit bird feeders, healthy insect populations are essential to their survival. Native plants, shrubs, and trees provide the foundation for these insect populations and also support the biodiversity flycatchers need for nesting. As cavity nesters, they depend on natural woodlands with abandoned woodpecker holes, crevices, and other features often found in less-managed habitats.

Residents can help support flycatchers and other wildlife by planting native species and expanding habitat on their own properties. Whether your yard borders existing woodlands or serves as a steppingstone between natural areas, increasing native plant density can create valuable food and shelter for wildlife. Resources and planting guidance are available through Plant NOVA Natives and the Northern Virginia Bird Alliance's Wildlife.

The Wildlife Sanctuary Program is a conservation project of the Northern Virginia Bird Alliance to promote citizen participation in conserving and restoring local natural habitat and biodiversity.

You can make a difference and take pride in certifying your property as a Wildlife Sanctuary. A volunteer Wildlife Sanctuary Pro-

Northern Virginia Bird Alliance's Wildlife

gram Ambassador will visit your property to advise on habitat improvements you can make, and later, to certify your yard as a Wildlife Sanctuary. When the animals show up—and they will in response to your efforts— you can apply for certification as a Wildlife Sanctuary. Our motto is, “Let the animals decide.”

Where to Begin

- ◆ Start the process by taking the Healthy Yard Pledge to:
- ◆ Reduce pesticide and fertilizer use – No broad-spectrum spraying for mosquitoes
- ◆ Remove invasive non-native plants
- ◆ Conserve water and protect water quality
- ◆ Plant species native to our area
- ◆ Reduce lawn coverage area
- ◆ Leave the leaves in non-lawn areas
- ◆ Reduce hazards to birds and other wildlife, such as keep cats indoors

Guard against human-made hazards like window collisions, light and noise pollution, poisonous and glue pest traps, and plastic netting

The application acts as your worksheet as you create your habitat. Check out our Creating Wildlife Habitat page to learn about the habitat features and practices that make a healthy habitat.

For Applications: <https://www.nvbirdalliance.org/wildlife-sanctuary-program>

Our Ambassadors are here to assist you with recommendations specific to your property with special focus on increasing biodiversity with native plants. The Wildlife Sanctuary Program is powered by the passion of volunteer Ambassadors. Contact the Coordinator in your county to request a visit.

HAPMUDO
MARTIAL ARTS

Lee's Hapmudo Martial Arts Studio

7036 Columbia Pike . Annandale, VA 22003

703-750-3330 . webmaster@hapmudo.net

www.hapmudo.net

FIND HARMONY OF THE MIND, BODY AND SPIRIT

Summer Fun at Fairfax Parks

Fairfax County Park Authority



The Water Mine Family Swimmin' Hole

Get ready to have fun in the sun with Fairfax County Park Authority this summer! From award-winning water features and waterfront parks to mini golf and amusements, there is **something** for everyone.

Water Park, Pool and Sprayground: Visit the Fairfax County Park Authority's award-winning Water Mine Family Swimmin' Hole, the Our Special Harbor Sprayground and the Martin Luther King Jr. Park Swimming Pool. These popular destinations are fantastic options for families to come and cool off on a hot summer day.

The Water Mine Family Swimmin' Hole (1400 Lake Fairfax Drive, Reston) is family water park captures the excitement of the Old West's Gold Rush with attractions tailored for all ages. The Water Mine Family Swimmin' Hole offers more than an acre of slides, flumes, sprays, showers, floatables, and an interactive water playground. Careen off covered wagons, float on wild animals and dash through showers tipped from water-filled ore carts. The activity pool is encircled by Rattlesnake River, a 725 foot lazy river you can enjoy a relaxing float as the current gently nudges you along.

The centerpiece is Pete's Peak, a craggy mountain dotted with boarded up mine shafts and tunnels. Several slides of various size and intensity jut from the mountain, giving a variety of thrills you'll return to again and again. Enjoy a slide down Big Pete and Little Pete, or experience the thrills of Prospectors Plummet with one of three 3-story waterslides!

The mountain and slides are named for Pete the Prospector. According to Lake Fairfax legend, he staked his claim there in 1849, searching for gold. Sadly for Pete, his years of digging found only water. But now, with The Water Mine, the Park Authority is turning Pete's worthless old strike into the golden fun of summer.

There's something here for everyone. Tenderfoot Pond, with its

pint-sized slide and gentle bubblers, gives toddlers a perfect place for water play. Children will delight at the never-ending bubblers and spray fountains in Boomtown, a multi-level water playground, along with the interactive slides and additional interactive features in the tot spray pad area! The more adventurous can test their skills on Box Canyon Crossing, the log walk obstacle course. Teenagers can join a game of water volleyball or enjoy the thrill of Prospectors Plummet, and everyone will enjoy going with the flow in a tube on Rattlesnake. Open 11 am to 6 pm.

Our Special Harbor Spray Park 6601 Telegraph Road, Alexandria

Martin Luther King Jr. Park Pool 8115 Fordson Road, Alexandria

MINI GOLF: Hit the course with the family for a round of mini golf at four locations this summer.

Burke Lake Park 7315 Ox Road, Fairfax Station)

Lake Accotink 7500 Accotink Park Road,

Jefferson Falls 7900 Lee Highway, Falls Church

Oak Marr 3136 Jermantown Road, Oakton

CAROUSELS: Enjoy a ride on one of the Park Authority's enchanting carousels at several park locations (weather permitting).

Burke Lake Park 7315 Ox Road, Fairfax Station

Clemyjontri Park 6317 Georgetown Pike, McLean

Frying Pan Farm Park (2709 West Ox Road, Herndon):

Franconia 6601 Telegraph Road, Franconia

Lake Accotink 7500 Accotink Park Road, Springfield

MINI TRAIN: Take a scenic ride through the park on our mini, passenger trains. **Burke Lake Park** 7315 Ox Road, Fairfax

MARINA: Get out on the water by renting a kayak, canoe, paddleboard, pedal boat or other boat at one of our marinas.

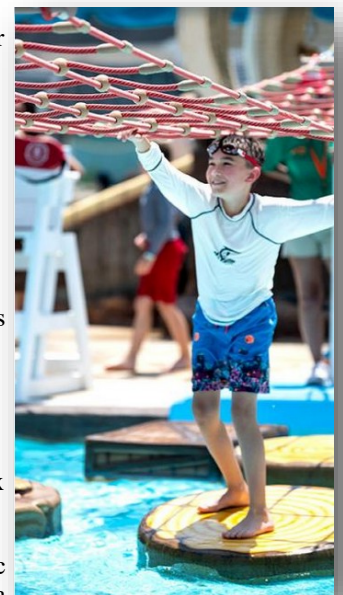
Many allow you to launch your vessels as well, check online for additional guidance and regulations.

Burke Lake Park 7315 Ox Road, Fairfax Station also offers guided boat tours on weekends!

Lake Accotink 7500 Accotink Park Road, Springfield kayaks

Lake Fairfax 1400 Lake Fairfax Drive

Riverbend Park 8700 Potomac Hills Street, Great Falls Marina will open in June.



VIEW ON NATURE

Not the Swan Song

By: Stephen L. Wendt



Trumpeter swans in winter

[Creative Commons Attribution-Share Alike 4.0 International](#)

Three swan species grace Virginia: the plentiful migratory Tundra Swan, the rare, native Trumpeter Swan; and the invasive, destructive Mute Swan. You can observe them near the tidal streams, rivers, estuaries, refuges in and around the Chesapeake Bay.

The Tundra and Trumpeter Swans are native to Virginia. Tundra Swans are far more numerous as large birds weighing up to 20 pounds with impressive bodies measuring 48 to 58 inches long and wingspans of 6 to 7 feet. They are bright white with black beaks and feet with a small yellow spot on their bills near the eye.

Tundra swans are monogamous and mate for life. Once linked, they migrate, feed, and raise their progeny as a unit. They produce one brood annually way up in the far north of Canada and western/ northern Alaska, incubating their eggs for 30 to 40 days. Their uniquely named babies, cygnets, are able to waddle within hours of hatching and first fly within 70 days in preparation for migrations.

In the fall, just before the freeze, Tundras begin their long, long 4,000-mile migration southeast to Virginia. The peri-

ous journey can take three months with arrival in November. Consider venturing out toward the Chesapeake Bay next Christmastime as a wonderful way to end the year.

Trumpeter swans are the largest native North American waterfowl, weighing a whopping 30 pounds with wingspans of 6 to 8 feet, with some reaching an incredible 10 feet! They're rare in Virginia but have small, resident breeding populations in the Piedmont region, especially in Fauquier and Loudoun Counties. Distinguishing them from the more common Tundra or invasive Mute Swan is easy; Trumpeter Swans have completely black bills that form a sharp, straight wedge with the eye (no yellow spot), trumpeters lack the curved neck and orange bill of the Mutes.

Mute Swans were imported to this country to enhance estates, parks, and resorts. Believed to have escaped from a Maryland estate in the 1960s, they now live wild year-round in the Chesapeake Bay. The mute swan has a white body and a long neck distinctively held in a graceful S-curve. It is also distinguished by its orange bill with a

VIEW ON NATURE

black knob at the base and black to grayish-pink legs and feet. Mutes grow to 5 feet with wingspans of 7 to 8 feet and weigh up to 25 pounds. The mutes are unwanted due to their aggressive daily uprooting of over 8 pounds underwater grasses important to other species, and habit of chasing away other wildlife from their nesting areas.

The term “Swan song” is a famous idiom that refers to a performance just before death or retirement. The ancient Greek myth dating back to the 3rd century BC said the characteristically Mute Swan would burst into a beautiful mournful song just moments before it dies. While the myth is myth, the phrase has remained as a way to describe a beautiful farewell. Luckily in our case, the Tundra and Trumpeter swans persist in Virginia.



Trumpeter Swans and Mallard (partially obscured)
Walter Siegmund
[Creative Commons Attribution 2.5 Generic](#)



Juvenile Trumpeter Swan
[Creative Commons Attribution 3.0](#)

Jet’s Pizza

The Best Pizza in Annandale



At last, **GREAT Pizza** can be found in Annandale at the Annandale Shopping Center at 7026 Columbia Pike. (Columbia Pike and Gallows Road)

Jet's Pizza is a Detroit based premium pizzeria specializing in their famous Detroit style deep dish square pizza. Founded in 1978 in the Detroit suburb of Sterling Heights, Jet's Pizza has expanded exponentially over the years to a total of 425 franchises across 22 states as of January 2024. As a family friendly business, Jet's aims to be a staple in the community and provide the Jet's is known for their uber cheesy pizza, with fresh veggies and quality toppings. This buttery Detroit-style square pizza is legendary, with a signature crunch and an aromatic Flavorized crust.

The menu also offers other pizza styles and lots of variations, including buffalo ranch chicken pizza, aloha pizza, veggie pizza, and many more. Other items include salads (the ranch dressing is home made and especially tasty), deep-dish bread, calzone-style boats, five different flavors of chicken wings, cookies and brownies.

Jet's provides catering for home and business gatherings, hot deliveries, friendly service, and always a warm greeting.



JET'S PIZZA
7026 Columbia Pike
(In the Annandale Shopping Cener)
Open 10 am to 10 pm, Monday thru Sunday
703-977-7117 . <https://www.jetspizza.com/stores/virginia/>

The Garden Path

Designing and Installing Fencing 101

By: Miles Campbell



Fence installation plays a practical role in how a home looks, feels, and functions. A well-planned fence can add privacy, improve safety, support pet-friendly yards, and make outdoor living areas easier to use.

For many Northern Virginia homeowners, fencing works best when it fits within the overall exterior plan. Garden beds, patios, gates, walkways, and landscape lighting all affect where a fence should go and how it should look.

Campbell & Ferrara provides Northern Virginia fencing services for homeowners who want fencing that accommodates their property, lifestyle, and local requirements. Homeowners can review Campbell & Ferrara's fencing options in Alexandria, VA, as they compare materials, styles, and project goals.

At Campbell & Ferrara, our landscape and hardscape experts are here to help you design a driveway that enhances your landscape design and supports your lifestyle—whether for pet-friendly use, outdoor entertainment, or everyday convenience. Make sure to also ask about options for patio paver installations. Our team of experts will bring your outdoor transformation to life. Contact us today at (703) 354-6724 to get started.

What to Consider Before Fence Installation

Successful fence installation starts with clear goals. Before choosing a material or style, homeowners should determine the objectives they want to achieve with fence installation. Fences provide multiple benefits. A backyard fence may be desired for privacy. A front-yard fence boosts curb appeal and a side-yard fence may provide access and space for pets, tools, or garden storage.

Important planning points include:

- Privacy needs
- Pet and child safety
- Property lines and HOA rules
- Pool safety requirements

- Gate placement
- Drainage and grading
- Views from inside and outside the yard

A fence should also support the full outdoor living environment, which is especially important when the property includes patios, walkways, planting beds, or outdoor entertainment areas. Fence placement can affect foot traffic, sunlight, and how open or enclosed the yard feels.

Professional planning helps prevent common issues. Posts need stable placement. Gates need room to swing. Sloped yards may need stepped or racked panels. Our team of experts can help homeowners review privacy goals, property conditions, HOA rules, and design preferences before fence installation begins.

Wood Fence Installation for Warmth, Privacy and Classic Style

Wood fencing remains a popular choice for Northern Virginia homeowners because it offers natural texture, design flexibility, and strong privacy. It works well with many home styles, from brick colonials to updated townhomes and larger suburban properties.

Privacy Fences

Privacy fences create a solid screen around backyards, patios, pools, and outdoor living spaces. They work well when nearby homes, streets, or shared property lines feel too exposed.

Privacy fencing can also make a small yard feel calmer, especially when paired with shrubs, ornamental grasses, or climbing plants.

Picket Fences

Picket fences suit front yards, garden borders, and traditional homes. They create a clear boundary without blocking the view of the house or planting beds. Such styles also give structure to walkways, entry paths, and small garden areas.

Shadowbox Fences

Shadowbox fencing offers partial privacy with airflow. Boards alternate on each side of the rail, which gives the fence a finished look from both sides. The small gaps between boards allow light and air to pass through, which can help nearby garden beds.

Custom Wood Designs

Custom wood fencing can include horizontal boards, mixed heights, decorative caps, or wider posts. Such choices should fit the home's architecture and surrounding landscape design. A horizontal fence can suit an updated exterior, while a simple vertical board design may feel better beside a traditional garden.

Wood offers strong design flexibility and some wood may require routine care. Stain, paint, and sealant choices affect the final look and long-term upkeep. Proper posts, drainage, and installation also affect lifespan. When planned well, wood fencing can complement patios, garden paths, and planting areas with a warm, finished appearance.

Campbell & Ferrara

8351 Richmond Hwy, Alexandria, VA 22309

(703) 354-6724 . <https://www.campbellferrara.com>



Aluminum Fencing for Durable, Open, & Refined Boundaries

Aluminum fencing works well for homeowners who want structure and security without closing off views. It creates a clear edge while keeping the yard visually open. This makes it a strong option for properties with gardens, pool areas, stonework, or views worth keeping.

Common uses include:

- Pool fencing
- Garden boundaries
- Decorative front-yard fencing
- Side-yard enclosures
- Safety Railing
- Pet-friendly areas, depending on height and picket spacing

Aluminum fencing often comes with rust-resistant finishes that help it perform well in Northern Virginia's seasonal weather. It also needs less routine upkeep than wood. Homeowners do not need to stain or paint it on a regular schedule, and the clean lines pair well with many exterior styles.

Aluminum fencing works especially well near patios, walkways, planting beds, and landscape lighting. It defines the space without making the yard feel boxed in. At night, lighting can catch the fence's lines and make paths, gates, and outdoor rooms easier to use.

Aluminum also supports hardscape design. It can pair with stone walls, entry columns, paved paths, and garden gates. The result feels organized without feeling heavy.

The material does have limits. Aluminum provides less privacy than solid wood fencing. It may not suit homeowners who want to block views from nearby properties or create a fully screened backyard. For those goals, wood or another solid design may work better. For visibility, pool safety, and a refined boundary, aluminum remains a strong option.

Horizontal Fences

Horizontal fences offer a clean, current look that suits many updated homes. The boards run side to side rather than up and down, which can make a yard feel wider and more structured.

Board spacing matters. Tight spacing creates stronger privacy, while slight gaps allow light and airflow. Height, finish color, and post style should match the home's architecture.

Security Fencing

Security fencing helps control access around side yards, rear property lines, pool areas, and service areas. It can also guide guests toward the main entry while keeping utility zones less visible.

Security does not require a heavy look. Wood, aluminum, and custom gate designs can create a clear boundary while still fitting the home's exterior style.

Gates and Entry Systems

Gates shape daily use. Common gate locations include driveways, garden paths, side yards, and entries near patios or outdoor entertainment areas.

Gate width also deserves attention. Homeowners may need room for lawn equipment, trash bins, strollers, or bicycles. Hardware, hinges, and latch choices affect long-term performance.

HOA-Compliant Designs

Many Northern Virginia neighborhoods have HOA rules for fencing. These rules may address height, material, color, placement, and approved styles.

A professional team can help identify fence designs that fit both the property and the neighborhood standards. A custom fence can support an extraordinary transformation by connecting outdoor living spaces, patios, garden areas, and circulation throughout the yard.



MEET THE ARTISANS

Christmas in July Show and Sale



Artisans United has special plans for the summer season. If you have visited, you know how we organize the Craft Gallery, with a new show every two months and different themes during the year. This summer we will have something new in the gallery, plus a great lineup of classes.

In July we are celebrating Christmas in July, with a display of holiday items such as ornaments and other decor to jump-start your holiday shopping. The gallery will include our regular selection of beautiful and unique items in the many crafts our artists create. This will be followed by a focus on our artists in August. Each artist will be selecting some of their favorite items for a special display, which will include information about why they chose those pieces.

Come to the opening reception on July 11th from 1:00 to 3:00 to see all the seasonal and holiday items we will have. The reception also will include craft demonstrations, an origami class, light refreshments, and time to visit with some of the gallery artists.

We have several classes planned for the summer in addition to the special themes in the gallery:

- ◆ Saturday, July 18th—Learn to make special ornaments that

can be used for holiday decorations or as sun-catchers. These glittery bead and wire ornaments will be a great addition to your home or could be a lovely gift. The class will be from 11:00 to 1:00. It's open to students age 10 and up and costs \$20.00.

- ◆ Monday, July 27—Wood Carving: Beginning and experienced carvers welcome. Enjoy renewing or learning new skills in a meditative art. Participants will take home a small wood carving project. Minimum age is 16; if under age 18, the student must be accompanied by an adult for the entire time. Cost is \$5.00.
- ◆ Saturday, August 15 and Sunday, August 16—Two-session Polymer Clay Craft. Learn various polymer techniques and make a sampler of polymer techniques displayed on a canvas. 10:00 a.m. to 2:00 p.m. each day. Minimum age: 13. Cost: \$100.00. Prepayment required by August 1st.
- ◆ Saturday August 22—Acrylic Painting (especially for children). Learn to Paint a Fun Garden Scene. Play with color, learn painting techniques, and take home a piece of art you can enjoy. Beginners welcome; great for young children. Ages 5 and older. Cost \$5.00
- ◆ Monday, August 24—Wood Carving. See description above.

For all classes, pre-registration is required. Visit the Craft Gallery of Artisans United or call (703-941-0202).

The Craft Gallery is open Tuesday through Saturday from 10:00 a.m. to 4:00 p.m. and Sunday from 1:00 p.m. to 4:00 p.m. It's located at 4022 Hummer Road, Annandale VA, in the Annandale Community Park (Fred M. Packard Center).

Visit the website at <https://augallery.org> where you can see examples of work by our artists.





Summer Classes



The Craft Gallery of Artisans United
4022C Hummer Road Annandale, VA 22003
(Inside the Annandale Community Park just off Hummer Road)

703-941-0202 . www.augallery.org
Hours: Tuesday through Saturday: 10 am-4 pm, Sunday: 1-4 pm

The Golden Years

Avoiding Loneliness

By: Deena Imbriglia
Home Instead Senior Care



watching an old movie, taking a walk or listening to music can bring on some sweet smiles.

5. Consider companionship: If you can't be there to provide companionship and assistance, consider some outside home care, such as Home Instead. Assistance with meal preparation, transportation to appointments or activities with someone to brighten a day, can go a long way toward alleviating loneliness.

Home Instead Senior Care
7058 Columbia Pike, Annandale 22003
703.750.6644 .www.homeinstead.com

1. Look and listen: Ask an older adult about hobbies and passions that piqued their interests in earlier days. Try to help them reengage in those interests. If they are no longer able to do those things, suggest adapting hobbies or in finding new interests altogether. Example: A family member got her father, a former builder, interested in woodworking projects.

2. Plan: Try to alter the TV habit of so many seniors by creating a monthly plan of activities that will connect them with others. Example: FaceTime with a grandchild, a coffee date with you or a friend, or planning a special dinner or meal together.

3. Encourage visits: Encourage visits from other family and friends. Plan special gatherings with friends and family members. Ask them to commit to be there by responding to an RSVP.

4. Be creative: Older adults, even many who have a dementia illness or cognitive decline still enjoy many activities with a little creativity or to spur their memories. Looking at old photos,

Your Home Instead team in Annandale, VA possesses a heartfelt desire to work with seniors in the community. It is our ultimate goal to forge extraordinary relationships between our clients and their Care Professionals.



To us, it's personal

When you are ready for help, our caring staff is on call to quickly answer your questions and accommodate your senior services needs.

Home Instead believes quality of life has no expiration date. Our person-centric care helps people of all ages maintain comfort, connection, and quality of life in the place that they love the most. We provide "home care" no matter where you call "home".

MOBILITY CITY
WE FIX WHEELCHAIRS & SCOOTERS... AND MORE![®]

Mobility City of Alexandria
5586 General Washington Drive
Alexandria, VA 23502

Monday - Friday: 9AM - 5PM | Saturday: 10AM - 2PM | Sunday: Closed

DAVID ENGWALL
Executive Director - VA

| Locations in FL, NJ, TN, TX, and VA
| Cell: 703-997-2648
| Email: David.Engwall@recoveryunplugged.com
| Admissions: 954-337-0865
| Fax: 954-337-0865
| www.recoveryunplugged.com

MUSIC MAKES THE DIFFERENCE

The Annandale Food Pantry at ACCA

Donations are Needed



7200 Columbia Pike, Annandale, VA (across from Giant Food)

As families across the country struggle with reduced Supplemental Nutrition Assistance Program (SNAP) benefits, we have seen an increase in demand for food from our food pantry here in Annandale. At the same time, we've all seen the increased prices for food overall which is depleting the funds we've set aside for fresh foods. Although we have had very successful food drives earlier in the year, our shelves are bare. Can you help? We need:

- ◆ Cash to purchase fresh foods.
- ◆ Nonperishable foods - We will be collecting food donations Tuesday-Friday afternoons from 1:30 pm - 4 pm, with the exception of County Holidays and other scheduled closings. The ACCA food pantry is located at 7200 Columbia Pike (trailer separate from the day care center) in Annandale (next to the fire station). Please do not drop off food if a volunteer is not available. To see what is most needed at any given time view: <https://accacares.org/foodpantry/>
- ◆ Or, you can drop off food donations at the Mason District Governmental Center at 6507 Columbia Pike on weekdays between 9 and 5. There is a collection box just inside the automatic doors.
- ◆ ACCA can also distribute fresh produce to clients from your home gardens. Please deliver to the pantry on Tuesday – Wednesday between 1:30 and 4 p.m. (so the produce is delivered to clients before the weekend).
- ◆ We also need volunteers to pick up food from the pantry and make local deliveries

For more information, visit the ACCA website <https://accacares.org/>
703-256-0100 . info@accacares.org

Fireworks Safety

Take this Seriously!

Fairfax County Fire Department

The Fourth of July just would not be the same without those breathtaking fireworks. However, those beautiful fireworks can turn your holiday into a tragedy within seconds. Many people are injured each year in Fairfax County due to fireworks. Some are injured seriously and left with permanent damage.

Any firework, which explodes, emits a flame or sparks higher than 12 feet, or performs as a projectile is prohibited by the Fairfax County Fire Prevention Code.

A permit is required for the sale of all fireworks, and these permits are only valid from June 1 to July 15 of each year. **Fireworks purchased in other states and brought into Virginia are most likely illegal for use in Virginia and those displaying them will be fined and charged.**

Many fireworks are not available in Northern Virginia because they are illegal. Firecrackers, cherry bombs and skyrocketers are just a few examples of fireworks which may be purchased in other areas, but are illegal here. Since even the possession of unapproved fireworks are prohibited in Fairfax County, such fireworks will be confiscated and the person possessing them can be charged with a Class 1 misdemeanor. This carries a maximum penalty of a \$2,500 fine and/or one-year in jail.

Please adhere to the following safety tips:

- ◆ When displaying legally purchased, approved fireworks, place them on a flat surface, clear of any combustible material and clear of all buildings.
- ◆ Keep all bystanders at least 25 feet away from fireworks.
- ◆ Read the directions.
- ◆ Do not permit young children to handle or light fireworks.
- ◆ Light only one firework at a time.
- ◆ Never throw fireworks.
- ◆ Sparklers can be very dangerous and account for the majority of injuries. Pieces can break off and burn bystanders.
- ◆ Young children should not use sparklers as these can attain a temperature as high as 1800 degrees Fahrenheit.
- ◆ Store fireworks in a cool, dry place.
- ◆ Always light fireworks with a flare or an extended butane lighting device. This will enable you to keep as far from the firework item as possible. If needed, use a flashlight at night so the fuse can be easily seen; never use a lantern or other flame producing device near fireworks for illumination. Light the fireworks product and get away quickly. Respect the fireworks, because if used improperly, they can be dangerous.
- ◆ Have an accessible fire extinguisher, water supply, hose, or bucket of water nearby for emergencies. During any fireworks shoot, there should always be one individual assigned as the fireman, whose sole job is to be alert and at the ready with a water source.

Artisans United Gallery of Gifts



Artisans United, Inc., which officially began in 1988, is a non-profit organization serving as a network of and for artists. Currently comprised of members of various Guilds and independent local artists and crafts-people, its primary purpose is to preserve, promote, and develop the disciplines of visual arts and crafts.



Artisans United, Inc. is tasked with taking arts out into the community. To fulfill this mission, we have participated in craft demonstrations, classes, talks, and exhibits both at the Gallery and in schools, hospitals, nursing homes, and libraries. In addition, we have taken part in the Annandale Fall Festival and have worked with the Cub Scouts and the Lifetime Learning Institute (which is connected with the Northern Virginia Community College). And, we also promote a 'Christmas in July' event, inviting the public to join us in making holiday ornaments to be shared with the residents of the Katherine Hanley Shelter in Fairfax County.



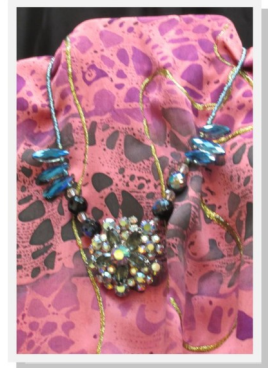
As a community resource, Artisans United, Inc. operates **The Craft Gallery of Artisans United** which is located just inside the front door of the Fred M. Packard Center in the Annandale Community Park off Hummer Road. Here the artists' creations are on display and may be purchased.



The Craft Gallery of Artisans United is a cooperative endeavor, staffed and run by the independent members of Artisans United, Inc. as well as those individuals belonging to the member Guilds. On a daily basis, visitors will find the Gallery artisans happy to explain crafting techniques and to share their knowledge of where craft materials may be obtained. And, too, visitors will often discover impromptu demos in progress as the artists complete their creations. We are always looking for new craftspeople to join our organization. If you are interested in joining us as a member artist, please ask at the front desk for a membership packet which explains the jurying in process, what is expected of you as a member of Artisans United.



If you are looking for gifts, please visit the Gallery where you will find an exceptional range of items appropriate for baby, wedding, mother's day, father's day, graduation and housewarming gifts, or a special treat for yourself. Gifts are very reasonably priced with the average cost of these fine artisan wares around \$35.



4022 Hummer Road, Annandale, VA 22003
(in the Annandale Community Park)
10-4 pm Tuesday through Saturday and 1-4 on Sunday
703-941-0202 . www.augallery.org



Fishing in Fairfax County

How to Target Individual Species

Dan Grulke, Fairfax County Park Authority



Fairfax County lakes offer a variety of species from bass to bluegill. These fish have preferences, so you may need to choose specific baits to entice the fish you are trying to catch. Using basic tackle and techniques, here are a few tips and tricks on targeting specific fish.

Largemouth Bass

Largemouth bass can be found in most lakes in Virginia and the U.S. They are one of the most targeted freshwater species of fish out there. There are many ways to catch these fish, which have been proven effective.

These fish usually range anywhere from 1 to 5 pounds, and they can put up quite the fight. One of the simplest methods to targeting these fish is by using soft plastic baits that look like worms, crayfish, smaller fish or any other insect/creature bait with some sort of action, such as a curly tail.

There are several ways to rig these baits. One of the easiest methods would be to hook the bait on a weighted hook and cast these toward brush piles, laydowns, grass beds or any other form of structure in the water where these bass can sit on. Then, you wait and ambush them. Another great method for catching largemouth bass would be to use live, bait such as nightcrawlers, minnows or live shad.

Smallmouth Bass

Smallmouth bass can be targeted in various rivers throughout the area, including Riverbend Park. These fish are known to be smaller than largemouth on average, but they fight just as hard, if not harder.

These are commonly targeted using a variation of moving lures to attract them. Some great lures to catch smallmouth bass include jigs with plastic trailers and bladed baits -- which provide a flash while moving through the water -- creature baits. Lures that can be used for largemouth bass also work great, as long as the hook size is not too large.

These fish can be targeted by casting toward rocks or large

structure that provide ambush points for the fish. Then, reel in the lure at moderate to moderate-fast speed.

Crappie

Crappie can be targeted at most lakes in Fairfax County, and they are one of the easiest fish to target during the colder months and in spring time.

These fish are usually found schooled up around submerged tree limbs and underwater structure, where they can find shelter and ambush territory.

The best lures to target these fish are small jigs and bladed baits that flash as they move through the water. Casting around a structure and retrieving small flashy lures at a slow tempo are the best ways to target crappie.

Catfish

Channel catfish are one of the most common fish in Fairfax County lakes, and they can be one of the easiest fish to target, as well as the largest. These bottom-feeders are more commonly caught on the bottom, feeding on fresh baits. But they will occasionally strike a lure, as well.

The best set up for catfish would be a strong hook or a circle hook with a lead weight attached above, which can slide up and down the line. This allows the bait to sit at the bottom, where the catfish are feeding.

Sunfish, Bluegill and Panfish

Sunfish are one of the most common and easiest fish to target wherever you go fishing in Fairfax County. These hand-sized fish can be caught using very small hooks and small pieces of worm, bread or any live bait. Tying a small hook using a clinch knot and securing a bobber about 1 to 2 feet above the hook have proven to be one of the most effective rigs for catching these fish. They are most commonly found closer to the banks of the shore, where they can stay out of reach for larger predators. These fish can also be caught on small lures, such as jigs and soft plastics with a curly tail, and a hook that fits around their mouth.

Carp

Carp are large fish that can usually be mistaken for giant goldfish, when seen on top of the water. These fish can be one of the more difficult to target but fun to catch.

Carp are omnivorous; their diet usually consist of aquatic plants and weeds. They occasionally feed on small insects and larvae.

The best way to target this fish is by using baits, such as bread or corn and putting it on very small hooks and letting the bait sit at the bottom. These fish are smart and will often chew the bait and miss the hook, so it is a good idea to make sure the hook is nearly fully covered by the bait.

Dan Grulke is the Fishing Coordinator for the Fairfax County Park Authority. He has lived in Northern Virginia for all but five years of his life. He has been fishing locally, in other states, and in other countries for 40 years. He has previously been a freshwater fishing guide on the Susquehanna River and Upper Potomac Rivers for eight years. Although he currently is not a guide, he enjoys introducing others to the sport of fishing. Dan.Grulke@fairfaxcounty.gov.

Fishing Brochure: <https://www.fairfaxcounty.gov/parks/sites/parks/files/Assets/documents/fishing/FCPA-Fishing->

KIDS' KORNER

Summer Entertainment Series Features Arts in the Parks

Grab your sunscreen, favorite snacks and the kids for family fun in the parks this summer! Every Saturday and Wednesday morning, *Arts in the Parks* will be hosting several performances perfect for the whole family. Not only will you be entertained with live performances, but you can also connect with the beauty of our parks and the joy of time spent outdoors.

Arts in the Parks is a FREE family fun alternative to Wednesday and Saturday morning cartoons and video games. It entertains children; teaches them the importance of protecting our natural resources; introduces them to live entertainment in an informal, kid friendly atmosphere; and forges a connection between kids and parks.

For most children, Arts in the Parks is their first exposure to live entertainment. Many of the young audience members get their first chance to join professionals on stage, so they remember and forever associate the delightful experiences with parks. For Fairfax County's younger set, ARTS IN THE PARKS has become THE THING TO DO!

Arts in the Parks is held at Burke Lake Park, E.C. Lawrence Park and Wakefield Park, Frying Pan Park, Mosaic Live! at Mosaic Center, and Sully Historic Site. For times and dates see the Summer Entertainment Series website: www.fairfaxcounty.gov/parks/performances/arts-in-the-par



All concerts are held outdoor and will be canceled due to inclement weather. Call 703-324-SHOW (7469) for inclement weather updates. For details regarding each series,

BEST TIP: Remember to check the schedule of activities for the Eileen Garnett Civic Space in the heart of Annandale for family friendly activities.

ACCA Child Development Center

Maria Isabel Ballivian
Executive Director

7200 Columbia Pike
Annandale, VA 22003
Phone: 703-256-0100
Fax: 703-914-4834
Email: miballivian@accadc.org
Website: accadc.org

GREAT AMERICAN RESTAURANTS

Washington's Brightest Food Stars

AA PLUS DRIVING SCHOOL
Driver's Edu, for Teens & Adults

Get 5+ Points Back
Adult Waiver Classes Offered
(DMV Road Test Waived)
5021B Backlick Road
Annandale VA 22003

703-642-0104 Main 703-642-0105 Fax
Email: info@Aaplusdrivingschool.com
Web: www.Aaplusdrivingschool.com

Westminster School
Established 1962

Nancy Schuler

admissions@westminsterschool.com | 703-256-3620

NATIONAL NIGHT OUT

Bring the family to the Annandale Shopping Center and Celebrate Our First Responders

Free Family Fun, Games, Prizes from 6-9 pm, August 4, 2026

HAPMUDO MARTIAL ARTS

KBS KITCHEN & BATH SOLUTIONS

Kinneman Insurance

Collector's WORLD

Patient First Primary and Urgent Care

HAIR UNIK

FIRE & RESCUE DEPARTMENT 1742 FAIRFAX COUNTY, VA

POLICE FAIRFAX COUNTY VIRGINIA

MASON DISTRICT MD LITTLE LEAGUE

International Dance, LLC Established 1962 Home of the Christina Heimlich Dancers

Kenwood Summer Day Camp

Artisans UNITED

Demaine Funeral Home SINCE 1841

ANNANDALE SHOPPING CENTER 7042 Columbia Pike & Gallows Road

Kenwood School

ANNANDALE ABGG Boys & Girls Club Est. 1959 Virginia

SILVERADO

RE/MAX Realty Group Pat Sawhney, CRS, GRI, SRES® Associate Broker

CENTER FOR DENTOFACIAL AESTHETICS

sweetFrog premium frozen yogurt

CRIMSON COWARD REAL ESTATE

McGILLICUDDY Commercial Properties

JET'S PIZZA

Lambros Goldsmith

you Library Fairfax County Public We're everywhere you are

National Night Out
Tuesday, August 4, 2026
6:00 - 9:00 PM

Police-Community Partnerships.

Free Family Fun & Games

Meet Our First Responders

Refreshments Free Family Fun Hapmudo Demonstration Glitter Tattoos Raffles & Children's Activities Discounts at Participating Stores

UnCovered

The Humble Oyster

Heather Hembrey, FCPA



Still-Life with Oysters by Creator: Alexander Adriaenssen
National Gallery of Prague

Oysters have been a part of North American food traditions for thousands of years. On Thanksgiving Day, many of us enjoy oyster dressing as part of our meal. Oysters on the half shell, Oysters Rockefeller, oyster stew, fried oysters, middens, mortar, pirates. What do middens, mortar and pirates have to do with oysters?

Fairfax County's First People harvested oysters along the Potomac River's west bank as early as 4,000 years ago. Oysters were an ample food source for these people who settled in seasonal camps. The Doeg people established permanent settlements along the Potomac and Occoquan Rivers by 1607 when they encountered the first English explorers. They harvested oysters by scooping them into baskets at low tide or by diving. Doeg and people before them discarded oyster shells

and other refuse in shell mounds. These mounds, or middens, can contain thousands of shells and are rich sources of information for archaeologists in Fairfax County and elsewhere.

Oyster shells were not always thrown away. George Washington had much difficulty obtaining oyster shells from which lime was made as a component of mortar. On 28 February 1785, he wrote Henry Knox:

"I use a great deal of lime every year, made of the Oyster shells, which, before they are burnt, cost me 25 a 30/ pr hundred Bushels; but it is of mean quality, which makes me desirous of trying Stone lime." (*The Papers of George Washington Digital Edition*. Charlottesville: University of Virginia Press, Rotunda, 2008.)

80 years later, humble oysters spurred the Oyster Wars between Virginia and Maryland. Oysters had become a favorite food for people across the United States and abroad. Chesapeake Bay and Potomac River oysters were deemed the finest in the world. By 1865, canning and railroads brought oysters to inland states, sharply increasing demand and decreasing oyster populations.

Maryland and Virginia watermen who ignored laws protecting oyster beds poached the mollusks at night. These oyster pirates' clashes with authorities sometimes led to gunfire. When New England watermen used dredgers to harvest Chesapeake oysters, tensions sharply increased. In 1868, Maryland created the armed Oyster Navy to catch pirates. In February 1882 Virginia's Governor launched his own fleet, leading to 71 arrests. Pirates harvested Chesapeake Bay oysters until April 1959, when an officer killed a Virginia man who was illegally dredging, thus ending the Oyster Wars.



Still Life with Oysters is in the **public domain** in the United States because it was published (or registered with the U.S. Copyright Office) before January 1, 1931.

Image caption: Maryland--The oyster war--Oyster pirates, Harpers 1884.jpg. Library of Congress, public domain.

New Virginia Laws

They will go into effect on July 1st.



Law enforcement required to provide life-saving aid to victims unless it is dangerous

On-duty law enforcement officers are required to provide aid to anyone whom they see is suffering from a serious bodily injury or is in a life-threatening condition, if it does not endanger the officer, the victim or the public.

The measure also protects law enforcement officers from civil liability for any personal injury or wrongful death as a result of their providing aid to the victim or not providing aid, except in the case of gross negligence or willful misconduct. The Department of Criminal Justice Services will need to provide law enforcement officers with basic medical training and emergency first aid.

Penalties for livestreaming while driving

This law prohibits anyone from livestreaming while driving a car on the highways in the Commonwealth. Drivers who participate in a livestream or manipulate an electronic device to interact with any livestreams or enable or maintain the livestream on such device will also be in violation.

Penalties for violating this law include driver’s license suspension periods and a maximum fine of \$500 if the driver gets involved in an accident. These new penalties will be tacked on top of other penalties that are already established under other current traffic violation laws.

Minimum wage increase

The minimum wage will increase to \$13.75 per hour by Jan. 1, 2027, and then to \$15 an hour by Jan. 1, 2028. After that point, the measure will require the minimum wage to be adjusted effective Jan. 1, 2029, to reflect increases in the con-

sumer price index. This year, on Jan. 1, the minimum wage was increased to \$12.77 per hour.

Lifetime park bans for offenders convicted of crimes prohibiting access to children

Any adult convicted of an offense on or after July 1 that prohibits their proximity to children will not be allowed to be within 100 feet of specific park facilities where there is a playground, athletic field or facility, or gymnasium, for the purpose of contacting kids who are not in their custody. The prohibition will be for the rest of their lifetime, as part of their sentence.

This also applies to anyone who has been convicted of similar crimes in a different state or foreign country. Violation of this law is punishable as a Class 6 felony.

Bill Schroeder
 Owner | General Manager
 703.755.7276
 springfieldva@schoolofrock.com
 springfieldva.schoolofrock.com

Kenwood School & Summer Day Camp

Est. 1957



955 Sunset Lane
 Annandale, VA 22003
 (703) 256-4712
 www.kenwoodschool.com
 admissions@kenwoodschool.com

Lambros Goldsmith

A spectacular personal experience where an exceptional Artist works.



Lambrosmagiafas@gmail.com

Annandale, VA 703-354-1038
 Juneau, Alaska 907-586-3355
 Skagway, Alaska 907-983-3016

Lambros Magiafas, known professionally as Lambros Goldsmith, is an award-winning fine jewelry designer born in Crete, Greece. Growing up in such a culturally rich and beautiful place had a profound impact on his creativity and matchless style.

Lambros Goldsmith' Jewelry is one of a kind and tailored to the person's dreams, ambitions, and understanding of beauty. His goal is to bring joy, uniqueness, and appreciation for beauty into people's everyday lives through his stunning creations. With shops across the country, Lambros Goldsmith has become a prominent figure in the world of jewelry design, known for his personalized approach and exceptional craftsmanship.

Lambros Goldsmith's process of creating jewelry is personal and thorough. He regularly travels to reputed craft and trade shows where he carefully handpicks the highest quality materials and gems. He then tells a story for each gem by creating exclusive designs and settings that are harmoniously intertwined with their qualities and beauty. His personal touch is evident in every piece he creates, and one can feel his love for design just by looking at the intricate patterns and handcrafted details.

Lambros Goldsmith takes great pride in making people happy through his creations and designs. His customers often remark on the joy and happiness his jewelry brings to their lives. If you desire a spectacular personal experience where a true artist works with you to handcraft a piece of jewelry uniquely representing your vision and desires, stop by Lambros Goldsmith's shop located at 7137-C Little River Turnpike, in Annandale.

Wearing one of Lambros' creations is not only a daily reminder of beauty and art but also of how distinctive and special we all are as parents, professionals, and individuals.



Did You Know?

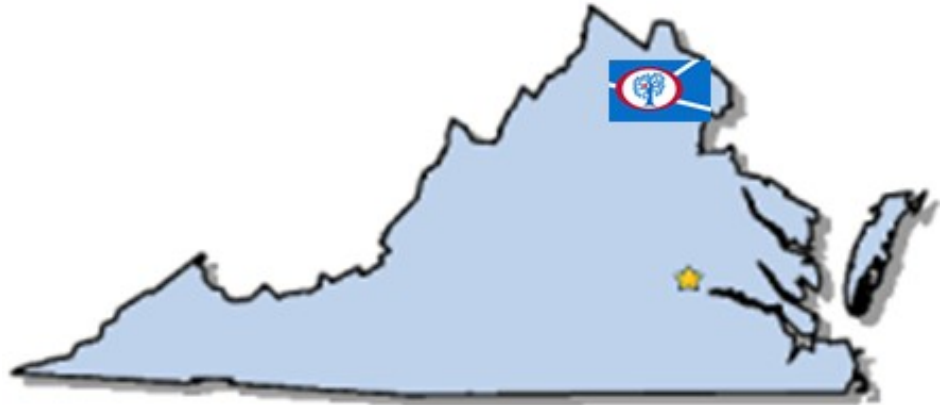
Virginia Population Statistics

US Census Bureau

Virginia has a land area of 39,481.4 square miles and a water area of 3,293.4 square miles. It is the 36th largest state by area.

Virginia is bordered by District of Columbia, West Virginia, Maryland, Tennessee, and North Carolina.

In Virginia, **8.9%** of residents are veterans, according to 2024 American Community Survey 1-Year Estimates. Nationwide, **5.9%** of residents are veterans.



Did You Know?

The state tree is the **Dogwood**.
 The state bird is the **Cardinal**.
 The largest city is **Virginia Beach**.

Populations and People

Median Age

39.4 ± 0.2 (plus or minus)

Race and Ethnicity

American Indian and Alaska Native

40,007
 American Indian and Alaska Native alone in Virginia
 3,727,135
 American Indian and Alaska Native alone in United States

Asian

615,436
 Asian alone in Virginia
 19,886,049
 Asian alone in United States

Black or African American

1,607,581
 Black or African American alone in Virginia
 41,104,200
 Black or African American alone in United States

Hispanic or Latino

908,749
 Hispanic or Latino (of any race) in Virginia
 62,080,044
 Hispanic or Latino (of any race) in United States

Native Hawaiian and Other Pacific Islander

7,156
 Native Hawaiian and Other Pacific Islander alone in Virginia
 689,966
 Native Hawaiian and Other Pacific Islander alone in United States

Not Hispanic or Latino

5,058,363
 White alone, not Hispanic or Latino in Virginia
 191,697,647
 White alone, not Hispanic or Latino in United States

Some Other Race

446,650
 Some Other Race alone in Virginia
 27,915,715
 Some Other Race alone in United States

Two or More Races

705,707
 Two or More Races in Virginia
 33,848,943
 Two or More Races in United States

White

5,208,856
 White alone in Virginia
 204,277,273
 White alone in United States

The Police Beat

More Travel, More Activity, More Enforcement: Traffic Safety Efforts Begin

Fairfax County Police Dept.



As summer arrives in Fairfax County, more people are heading outdoors, traveling for vacations, attending community events, and enjoying warmer weather. With schools wrapping up for the year, our roads often become busier with drivers, pedestrians, bicyclists, motorcyclists, and children participating in camps and summer programs.

Throughout the month, Fairfax County Police Department officers from patrol and specialized units will conduct targeted education and enforcement efforts aimed at reducing fatal, serious injury, and property damage crashes across the county. June's initiatives will focus on Move Over enforcement, loud exhaust violations, and our Road Shark campaign.

Move Over and Loud Exhaust Enforcement

Virginia's "Move Over" law is designed to protect first responders, tow truck operators, and motorists stopped along our roadways. When approaching a stationary vehicle displaying emergency lights, hazard lights, or warning equipment, drivers are required to move over when safe to do so or significantly reduce their speed. A few extra seconds of caution can save a life.

Officers will also focus on loud exhaust violations throughout the month. Modified exhaust systems that create excessive or unusual noise not only impact quality of life in our neighborhoods but also violate Virginia law.

Road Shark Returns

Road Shark is a high-visibility traffic safety campaign focused on the driving behaviors most often associated with serious crashes. During the initiative, officers will target speeding, reckless driving, distracted driving, and other dangerous violations through increased education and enforcement efforts across Fairfax County.

Summer Safety Reminders

As routines change and summer begins, keep these safety tips in mind:

- Slow down and obey posted speed limits,
- Put the phone away and eliminate distractions while driving,
- Watch for pedestrians, runners, bicyclists, and motorcyclists, especially during evening hours,
- Leave extra space between vehicles and avoid aggressive driving behaviors,
- Never drive impaired,
- Remember that school may be ending, but school buses don't disappear. Summer school, camps, recreation programs, and other youth activities continue throughout the season. Always stop for school buses displaying flashing red lights and a stop arm.

Our Shared Goal

Traffic safety is a shared responsibility. Whether you're behind the wheel, riding a bike, walking through your neighborhood, or responding to an emergency on the roadside, every decision matters.

By combining education, enforcement, and community awareness, we're working to reduce crashes and keep everyone moving safely throughout Fairfax County this summer.

Learn more traffic safety tips and initiatives at FCPDNews.org and follow us on social media throughout the month for enforcement updates and safety reminders.

Automated External Defibrillator (AED) Program

Fairfax County Police Dept.

Automated External Defibrillator (AED) Program

The Fairfax County Police Department (FCPD) has launched a new Automated External Defibrillator (AED) program that will equip patrol officers with additional life-saving tools to respond to cardiac emergencies in the community.

Sudden cardiac arrest can happen anywhere and often without warning. In these critical moments, every second matters. Quick access to an AED, combined with immediate intervention and CPR, can significantly improve a person's chance of survival. By equipping patrol officers with AEDs, FCPD is expanding access to lifesaving care and helping ensure help arrives as quickly as possible during cardiac emergencies.

As part of the program, each district police station will receive five Avive Connect AEDs to distribute across patrol shifts. Through dispatch tracking and officer login information, the Department's dispatch center can quickly identify which officers are equipped with AEDs and dispatch the closest available unit to cardiac emergencies.

All patrol officers assigned an AED receive specialized training in cardiopulmonary resuscitation (CPR) and AED operation in accordance with Department policy. Officers are required to maintain current certification through ongoing biennial training to ensure they remain prepared to respond during cardiac emergencies.

Following a cardiac event, the devices can generate a QR code that allows EMS personnel and medical providers to quickly access cardiac rhythm data and other critical incident information.

This initiative reflects FCPD's continued commitment to public safety, officer wellness, and providing rapid emergency response to the Fairfax County community.



Lambros Fine Jewelry

7137 Little River Turnpike, Annandale, VA 22003
703-354-1038 . www.lambrosgoldsmith.com

DBURKEDESIGNS, LLC



CUSTOM-DESIGNED FURNITURE
JEWELRY/KEEPSAKE BOXES

DBURKEDESIGNS.COM DBURKEDESIGNS@COX.NET



Kenwood Summer
KS DC
Day Camp

www.kenwoodschool.com/services/
703-256-4711



SAVE THIS DATE & Register to Participate: Saturday, October 24, 2026- The Annandale Parade 10 AM—Noon

American Legion
Bicentennial Post 1976

Diane Ramsey
Manager

4206 Daniels Avenue
Annandale, Va 22003
703-941-9608 Post
703-408-9123 Cell
703-941-0136 Fax
Rpcomm6759@aol.com
Post1976.org



Brandon L. Yeckel
Funeral Director



Demaine Funeral Home
5308 Backlick Road
Springfield, VA 22151
703-941-9428
Fax 703-658-5123
Brandon.Yeckel@DignityMemorial.com

RE/MAX REALTY GROUP

Pat Sawhney
Realtor®

O: 703-642-3380
C: 703-395-9214
patsawhney42@gmail.com

5501 Backlick Road #100
Springfield, VA 22151
Each Office Independently Owned And Operated




Haven
of Northern Virginia, Inc.
support for the bereaved and seriously ill

4606 Ravensworth Road
Annandale, VA 22003
www.havenofnova.org

703-941-7000
Fax 703-941-7003

Annandale Boys' & Girls' Club, Inc. (ABGC)



4216 Annandale Road
Annandale, VA 22003

Office #: (703) 941-ABGC (2242)
Email: abgc@abgc.org
www.abgc.org

KBS KITCHEN & BATH SOLUTIONS

7024 Columbia Pike, Annandale, Virginia
(571)3994141- (571)2328822
kbsolutions@kitchensbathsolutions.com
http://http://www.kitchensbathsolutions.com



The Annandale Parade
Saturday, October 24, 2026
10:00 AM - Noon



**WATCH THE FUN
Columbia Pike**

www.annandalechamber.com

Scouts
Fire Trucks
Antique Cars
Clowns

Dancers
Marching Bands
Storybook Characters

Event organized by the Annandale Chamber of Commerce. The Annandale Parade will be accessible to people with disabilities.