

- 2 The Garden Path
- 4 Earth Day and NV Fine Arts Festival
- 5 Haven of NV Celebrates 50th Anniversary
- 6 Historic Huntley named to National Underground RR
- 8 The Police Beat Crime Data & Scams
- 9 Drones Launched First Responder Team
- 10 Protect Yourself from Spring Allergies
- 12 5 Ways to Protect Your Property from Floods
- 13 Insurance Insights & The Golden Years
- 14 A Parent's Guide: The Digital World
- 15 Artisans United Classes Now Offered
- 16 Sponsors Needed for Local Little League
- 18 Summer Day Camps in Annandale
- 20 Meet the Artisan: Dan Burke
- 22 Annandale Real Estate Recent Changes
- 23 Book Sale at Annandale Library

The Garden Path

Spring Planting Design & Native Selections

By: Miles Campbell
Campbell & Ferrara Outdoor Living

Spring is one of the most rewarding seasons to refresh your landscape.

As temperatures warm and soil conditions improve, it becomes the ideal time to establish vibrant gardens that will thrive throughout the growing season.

Incorporating native plants into your spring planting design is especially valuable because these species are naturally adapted to local soil, climate, and wildlife. Strategic spring planting not only revitalizes your property after winter but also helps create a landscape that supports long-term health, biodiversity, and visual appeal.



Spring Planting Design Ideas that Enhance Curb Appeal and Outdoor Spaces

Spring is widely considered the best season to install new planting beds and refresh existing gardens. As soil temperatures rise and rainfall becomes more consistent, plants can establish strong root systems before the heat of summer arrives. This early establishment helps trees, shrubs, and perennials grow healthier and more resilient throughout the growing season. For homeowners looking to improve their landscape designs, spring offers the perfect opportunity to evaluate existing garden spaces and introduce thoughtful planting strategies that improve both aesthetics and function.

One of the most effective approaches to spring planting is creating layered planting beds that complement the landscape's structural elements. Foundation plantings along the front of a home, for example, often combine shrubs, perennials, and groundcovers to create visual depth. These designs help soften architectural lines while enhancing curb appeal. When carefully planned, foundation plantings also guide visitors toward entryways and visually connect the home with surrounding gardens.

Spring planting designs are also frequently used to enhance outdoor entertainment areas. Beds surrounding patios or seating spaces help soften the edges of stone surfaces and create a more welcoming environment for outdoor entertainment. When these plantings are coordinated with patios, walkways, and seating walls, the result is a cohesive environment that integrates both plantings and structural features.

Common Spring Landscape Design Styles

Some of the most practical planting styles used in residential landscapes include:

- Foundation planting designs – Layered plantings along the base of a home that combine shrubs, perennials, and groundcovers for year-round curb appeal.
- Patio and outdoor gathering plantings – Garden beds surrounding patios or seating areas that soften the look of stone surfaces while supporting outdoor entertainment spaces.
- Planter beds and garden borders – Defined planting areas along driveways, walkways, or property lines that add visual structure and seasonal color.
- Green screens and privacy plantings – Trees and

THE GARDEN PATH

Native Perennials for Color, Pollinators, and Seasonal Interest

shrubs strategically placed to create natural privacy around patios or outdoor seating areas.

Another important consideration in spring landscape planning is nighttime visibility and ambiance. When planting beds are positioned strategically, they can highlight focal points illuminated by landscape lighting. Trees, flowering shrubs, and textured perennials respond beautifully to subtle lighting, extending the landscape's beauty into the evening hours.

With the right plant combinations and design approach, the team at Campbell & Ferrara can ensure that your landscape reflects seasonal color, supports pollinators, and enhances the overall enjoyment of your outdoor living environment.

Native Perennials for Color, Pollinators, and Seasonal Interest

Native perennials are among the most valuable additions to spring planting designs because they are naturally adapted to regional soil and climate conditions. These plants often require less maintenance, significantly less fertilizer and pesticides, and less irrigation than non-native species. In addition to their resilience, native perennials provide critical habitat and food sources for pollinators, including butterflies, bees, and hummingbirds.

When incorporated into landscape designs, perennials provide vibrant seasonal color while adding structure and texture to planting beds. Many native species bloom at different times throughout the growing season, allowing homeowners to enjoy changing colors and visual interest from early spring through fall.

Native Perennials to Consider

- *Monarda didyma* 'Purple Rooster' – Known for vibrant purple blooms that attract hummingbirds and butterflies.
- *Asclepias tuberosa* (Butterfly Weed) – Essential host plant for monarch butterflies with bright orange flowers.
- *Baptisia australis* (Blue Wild Indigo) – Tall perennial with striking blue blooms that provides structural height.
- *Rudbeckia fulgida* (Black-eyed Susan) – Bright golden flowers that extend color into late summer and fall.
- *Aquilegia canadensis* (Columbine) – Early-season flowers ideal for partially shaded garden areas.
- *Carex plantaginea* (Plantainleaf Sedge) – Adds soft texture and works well in shaded garden beds.
- *Lobelia cardinalis* (Cardinal Flower) – Brilliant red blooms that attract hummingbirds.
- *Echinacea purpurea* (Purple Coneflower) – Classic native perennial known for drought tolerance and pollinator support.
- These perennials provide long-lasting color, seasonal variation, and ecological benefits while creating visually balanced planting beds.

Groundcovers that Provide Structure and Low-Maintenance Beauty

Groundcovers serve an essential role in successful spring planting designs by filling gaps between larger plants and creating visual continuity throughout planting beds. These low-growing



plants help stabilize soil, suppress weeds, and reduce erosion, making them both practical and attractive components of bold highlight keywords landscape designs.

One of the most common uses for groundcovers is along pathways and garden borders. When planted near walkways or patios, these plants soften the transition between lawns and hard surfaces. This effect is especially important when landscapes include patios, retaining walls, or walkways installed through hardscape design.

Groundcovers Ideal for Spring Plantings

- *Juniper 'Blue Rug'* – Evergreen groundcover with attractive blue foliage that spreads across slopes or open beds.
- *Creeping Thyme* – Fragrant flowering groundcover ideal for sunny pathways and garden edges.
- *Dragon's Blood Sedum* – Hardy succulent with foliage that deepens in color throughout the season.
- *Sedum 'Angelina'* – Golden foliage that provides a strong contrast in planting beds.
- *Phlox subulata* (Creeping Phlox) – Spring-blooming groundcover that creates colorful carpets of flowers.
- These groundcovers enhance planting beds while reducing maintenance and helping maintain soil health.

Native Shrubs for Structure, Privacy, and Seasonal Interest

Shrubs provide the structural backbone of most planting designs. They create visual anchors within planting beds while adding height, density, and seasonal variation. When used effectively, shrubs help define garden spaces and provide privacy around patios, seating areas, and gathering spaces used for outdoor entertainment.

Native shrubs are especially valuable because they offer multiple seasonal benefits, including flowers, berries, fall color, and winter interest.

Native Shrubs for Spring Landscape Designs

- *Aronia melanocarpa* 'Low Scape Mound' – Compact shrub

known for attractive foliage and berries.

- Cornus ‘Arctic Fire’ – Vibrant red stems that provide strong winter interest.
- Itea ‘Little Henry’ & Itea virginica – Fragrant flowers and stunning fall foliage.
- Chindo Viburnum – Dense evergreen shrub often used for natural privacy screens.
- Hydrangea quercifolia (Oakleaf Hydrangea) – Dramatic flowers with beautiful seasonal foliage.
- Clethra alnifolia (Summersweet) – Fragrant blooms that attract pollinators during summer.

Native varieties adapt well to local soil and climate conditions, meaning they generally require less irrigation, fertilizer, and maintenance once established. This makes them an excellent choice for homeowners seeking long-term landscape value.

Native Trees that Anchor the Landscape

Trees represent the most permanent and visually impactful elements of a landscape. They provide shade, define outdoor spaces, and anchor planting designs with strong vertical structure. Spring is an ideal time to plant trees because moderate temperatures allow root systems to establish before summer heat arrives.

Strategically placed trees enhance both beauty and functionality in residential landscapes. Trees planted near patios or seating areas provide cooling shade, making outdoor spaces more comfortable for relaxation and gatherings.

Native Trees for Spring Landscape Installations

- Chionanthus virginicus (Fringe Tree) – Elegant flowering tree with delicate white spring blooms.
- Vitex (Chaste Tree) – Produces lavender flower spikes that attract pollinators.
- Cotinus (Smoke Tree) – Unique smoky flower clusters and striking foliage.
- Amelanchier x grandiflora (Serviceberry) – Multi-season beauty with spring flowers, berries, and vibrant fall color.

When paired with layered planting beds and subtle landscape lighting, these trees become striking focal points that enhance the overall landscape design.

Experienced hardscape experts collaborate with landscape designers to ensure plant placement complements patios, retaining walls, and pathways. When integrated thoughtfully alongside hardscape design, landscape lighting, and gathering areas for outdoor entertainment, these plantings contribute to cohesive outdoor environments that both homeowners and visitors can enjoy in every season.

Conclusion: Thoughtful spring planting design allows you to bring an extraordinary transformation that is not only visually appealing but also functional and environmentally supportive. By incorporating native perennials, groundcovers, shrubs, and trees into your planting beds, you create a balanced ecosystem that enhances the beauty of your outdoor living spaces.

Contact us today or call (703) 354-6724 to discuss your options!
www.campbellferrara.com



21st Annual 5K Run/Walk
Saturday, April 18
REGISTER NOW

FALLS CHURCH HIGH SCHOOL

Jaguar 21st

5K RUN/WALK & 1 MILE FUN RUN

LOCATION FALLS CHURCH HIGH SCHOOL 7521 JAGUAR TRAIL FALLS CHURCH, VA	TIME 8:00AM FUN RUN 8:30AM 5K
CONTACT RACE DIRECTOR; BEBE KIM FCJAGUAR5K@GMAIL.COM	REGISTER WWW.JAGUAR5K.COM

5K RUN/WALK FEE BEFORE 3/31 \$30
 FUN RUN FEE \$20
 RACE DAY FEE \$50

ESPAÑOL

SCAN FOR DETAILS

Earth Day Celebration

Lake Fairfax, April 25, 2026

Fairfax County's 2026 Earth Day Festival, the largest Earth Day celebration in Fairfax County! Come celebrate with Fairfax County Park Authority at Lake Fairfax Park on April 25, 2026 from 10 a.m. to 4 p.m.

Enjoy Earth Day Fairfax on Saturday, April 25 from 10 a.m. - 4 p.m. at Lake Fairfax Park, where sustainability meets fun in a beautiful outdoor setting! This vibrant celebration is a day filled with exciting activities for all ages, including a craft beer garden offering local brews, an array of outdoor activities and interactive nature exhibits that highlight our planet's beauty. Enjoy live music from local bands and entertainment. Get up close and personal with friendly farm animals, and Earth-conscious vendors showcasing sustainable products and services. Our carefully curated selection of food trucks will feature delicious, locally sourced options, catering to every taste and dietary need. Earth Day Fairfax is the perfect way to connect with nature, support green initiatives, and enjoy a day of community, music and eco-conscious fun.

- Outdoor Discovery Activities
- Interactive Nature Exhibits
- Earth Friendly Vendors
- Food Trucks
- Craft Beer Garden
- Local Bands and Live Entertainment
- Free Giveaways
- Furry Farm Friends

Lake Fairfax Location

1400 Lake Fairfax Drive
Reston, VA, 20190
Admission is FREE; Parking is \$10 per car



Arts Festival

Northern Virginia Fine Arts Fair May 16-17, 2026

Now in its 34th year, the Tephra ICA Arts Festival (formerly titled the Northern Virginia Fine Arts Festival) will take place on May 16-17th at Reston Town Center.

Over 200 contemporary artists and artisans will travel from across the country to present original handmade artwork to share with Festival audiences. Drawing upon a robust exhibitor and collector base coupled with Tephra ICA's contemporary art foundation, the Festival has become one of the region's most anticipated events, attracting tens of thousands of people to the unique, outdoor environment of Reston Town Center. The Festival is comprised of one-on-one experiences, performances, and special events leaving an exciting, thoughtful mark in the region.

Tephra Institute of Contemporary Art has produced this impressive fine arts festival since 1991. Participating artists uniformly view the festival as one of the best outdoor art festivals in the country and extend high praise to the level of hospitality they receive from volunteers and involvement from a community that appreciates the high quality of the art presented.

Festival attendees will enjoy viewing inspiring and innovative art in a wide variety of media, interacting directly with artists from around the country, and exploring their own creativity in the Family Art Park. Thanks to a dynamic partnership with Reston Town Center Association and Boston Properties, all interior streets in Reston Town Center are reserved for pedestrians only during the Festival. The resulting 11-block art walk features more than 200 of the nation's best artists and offers 30,000-plus art enthusiasts the opportunity to view and purchase original art directly from the participating artists.

Northern Virginia Fine Arts Festival

Reston Town Center, 11900 Market Street, Reston, VA 20191

May 16, 10am-6pm

May 17, 11am-5pm

Rain or shine

\$5 Suggested Donations for Adults

www.tephraica.org/festival

703-471-9242



Image of Toll House Park, by R. Galindo
copywrite Annandale Chamber of Commerce

Haven of Northern Virginia

Celebrates 50 Years

By: Don McGrath



“Everyone can master grief but he that has it.”

William Shakespeare

These words written hundreds of years ago by The Bard ring as true today as when he wrote them. Who amongst us has not experienced the loss of a loved one and had to deal with their own personal ensuing grief?

Fortunately, in Annandale, there is a nonprofit 501(c)(3) organization that is observing its 50th year of supporting those who are grieving. This organization is called Haven of Northern Virginia, a longtime member of the Annandale Chamber of Commerce. Since 1976, Haven, has been providing emotional support to the bereaved, the seriously ill, the dying and their families and friends. It is aptly named, for a haven can be defined as a place of safety or refuge. From its nestled in the woods home on Ravensworth Road behind Hope Lutheran Church in Annandale, this is just what Haven offers to its clients. As its founder, Dorothy Garrett, said, Haven is a place where “someone could be able to talk out their feelings and may be given help and support.”

Haven’s services are provided at no cost by a cadre of some 30 volunteers as no one associated with Haven is paid. It offers a variety of programs, such as one on one sessions, a monthly widow/widower/partner group, on-going in-person and Zoom suicide loss support groups, and workshops dealing with sibling and parent loss. On March 21, Haven will be holding a Journey Through Grief Community Presentation, which will focus on understanding grief and how to take care of oneself. A workshop on April 18 will focus on those who have lost a spouse or partner.

Since its inception 50 years ago, Haven has provided its free services to thousands of residents of the DMV. One such resident is Susan from Springfield. She was married for nine years to George. It was the second marriage for both. They had a shared interest in sailing. He was 13 years older than she, and while they always understood it was quite likely he might die before

she, his passing was totally unexpected as he died suddenly, 24 hours after the onset of pneumonia.

Susan did not get a chance to say goodbye and the suddenness of George’s loss was “a blow to the gut with a startling impact.” Susan was 65 when she lost George in the spring and by the following fall, she learned of Haven which was promoting a program on how to deal with loss involving widow/widower/partner.

She was provided with concrete suggestions about dealing with her grief, with handouts, readings, exchanges of ideas about how to cope with the holidays. Susan describes Haven as a “lifeline ... totally non-threatening.” Waves of grief would envelope Susan the first year after George’s death. As the years passed, Susan cried for George’s loss at holidays, birthdays, wedding anniversaries or when she heard music they both loved. As the crying has decreased, she sees the joy in their faces in framed photographs and feels the happiness of the moment. She will always feel his absence yet is grateful for having George in her life. She observes that “when you are grieving, you are vulnerable, and you need to reach out to people you trust such as you find at Haven.”

Haven services are provided by volunteers, not therapists, who have been vetted and gone through a rigorous training process. One such volunteer is Joni Greene. She is Haven’s longest serving volunteer, having started with Haven in 1989. More than thirty-five years later, she is still quite enthusiastic about Haven and its mission, serving the bereaved. Joni has filled a variety of roles at Haven over the years, seeing clients, answering the phone, a member of the staff, unofficial historian, and even Executive Director. She does it because “I enjoy helping the client”. She has devoted a good portion of her life to Haven, because she sees the need for it in the community. Joni has seen the benefits of Haven’s work. Joni stresses how important the volunteers are to Haven’s purpose. Joni believes that when speaking with someone who has suffered a loss, no matter how recent or far in the past it has been, the most important question to ask someone is “How are you doing, today?”

So, if you, or someone you know, are grieving over the loss of a loved one recently, or in the past, know that there is an organization right here in Annandale devoted to assisting you with your grief – Haven of Northern Virginia.

To learn more about Haven and its programs, or to become a volunteer, please call 703-941-7000 or email

havenofnova@verizon.net

Haven’s website is <https://www.havenofnova.org/>

Let Haven Help

Haven of Northern Virginia, Inc.
4606 Ravensworth Road, Annandale, Virginia 22003 703-941-7000

Historic Huntley

Named to the National Underground Railroad Network to Freedom

By: National Park Service & The Fairfax County Park Authority



Historic Huntley : 6918 Harrison Lane, Alexandria, Virginia, 703-768-2525

The Fairfax County Park Authority is pleased to announce that Historic Huntley, a 19th-century villa near the entrance to Huntley Meadows Park, has been named to the National Underground Railroad Network to Freedom, a program of the National Park Service. The Network to Freedom works to honor, preserve and promote the history of resistance to enslavement through escape and flight.

Historic Huntley preserves the stories of three enslaved men, Bob, Sam Humphreys and Sandy, who risked everything on their journey to freedom in the 1820s and 1830s. To attain the new designation, Park Authority staff documented Huntley's role as a plantation in Fairfax County and the lives of the enslaved men who escaped.

"We can only imagine the courage required to face an abyss of uncertainty and danger when one feels the fire of freedom in their bones," said Nigel Fields, deputy director for planning and development at the Park Authority. "These stories continue to inspire freedom seekers today. Historic Huntley's history contributes to the evidence of a nationwide, persistent and irrepressible resistance to chattel enslavement in the United States."

Established through an Act of Congress in 1998, the Network to Freedom program works in collaboration with local, state and federal entities, as well as individuals and organizations to create a "network" of sites, facilities and programs with a verifiable connection to the Underground Railroad. These sites are not limited to safehouses and may include any location that played a role in a freedom seeker's journey.

By joining the Network to Freedom, the Park Authority, as the property owner and operator, has access to new opportunities for

grant funding that may be used for preservation, restoration and interpretation of the site. This designation also allows for network sites to draw support for preservation and commemorative efforts.

Historic Huntley is the third historic Park Authority site to attain this designation. Sully Historic Site was added in 2003, and Riverbend Park joined the network in 2011.

About the National Underground Railroad Network to Freedom

The Network to Freedom's mission is to honor, preserve and promote the history of resistance to enslavement through escape and flight. The network advances the idea that all human beings embrace the right to self-determination and freedom from oppression. The program is a catalyst for innovation and partnerships that share the diverse legacy of the Underground Railroad across generations. Learn more at the Park Service's www.nps.gov/subjects/undergroundrailroad/network-to-freedom.htm

Historic Huntley Villa

This Federal period villa was built for Thomson Francis Mason in 1825 as a summer retreat.

This 19th century architectural gem is located near the main entrance to Huntley Meadows Park. Historic Huntley is on the National Register of Historic Places, the Virginia Landmarks Register and the Fairfax County Inventory of Historic Sites. Over the years, Historic Huntley was used as a summer retreat, a grain farm, encampment for Civil War troops of the 3rd Michigan Infantry, and eventually was converted to a dairy

“Historic Huntley preserves the stories of three enslaved men, Bob, Sam Humphreys and Sandy, who risked everything on their journey to freedom in the 1820s and 1830s.”

farm. Ownership changed several times, and in later years, after being abandoned, the house endured considerable vandalism.

The Park Authority obtained the house and its surrounding 2.5 acres in 1989, and for the next two decades it was open only during semiannual events and for school and scout tours. A renovation of the manor house was completed in 2012. The buildings now are open for scheduled programs and tours as well as Saturday tours from late April through October.

The renovation got a boost from a \$100,000 grant from the National Park Service's Save America's Treasures program, which was created by NPS to preserve significant historic properties and collections. The grant helped fund the site's extensive structural restoration work. The Park Authority provided several million dollars towards preservation and redevelopment of the site through two Park Bond programs. In 2017, the Tenant House on the site was renovated to serve as a small visitor center. This allowed for expanded historic and cultural programming.

Tours of Historic Huntley are available on Saturdays at 10:30 a.m. and noon starting in April and ending at the end of October.

WISA SOLUTIONS



BETTER EXPERIENCE
BETTER VALUE ~ BETTER LIVING
 703-337-4344 . www.wisadc.com

Roofing Specialists

KBS
KITCHEN & BATH
 SOLUTIONS

7024 Columbia Pike, Annandale, Virginia
 (571)3994141 - (571)2328822
kbsolutions@kitchensbathsolutions.com
<http://http://www.kitchensbathsolutions.com>

DAVID ENGWALL
 Executive Director – VA

Locations in FL, NJ, TN, TX, and VA
 Cell: 703-997-2648
 Email: David.Engwall@recoveryunplugged.com
 Admissions: 954-337-0865
 Fax: 954-337-0865



MUSIC MAKES THE DIFFERENCE

*Honoring Our
 Community Heroes.*

*Order a flag for
 your hero!*



**FLAGS
 FOR OUR
 HEROES**

www.flags4ourheroes.org
 Annandale Rotary Foundation, Inc.

THE POLICE BEAT

Year 2025 Crime Data

Toll Payment Text Scam Circulating

Fairfax County Police Department



Crime Data Y2025 Released

The Fairfax County Police Department (FCPD) recently released its 2025 year-end crime data, and the results reinforce what we already know. Fairfax County continues to be the safest jurisdiction of our size in the country. Across most major categories, crime declined compared to 2024, reflecting continued progress in keeping our community safe.

The data highlights several key trends. Homicides reached their lowest level since 2018, with a 100 percent case clearance rate. Non-fatal shootings dropped by 37 percent, and carjackings declined by 48 percent. Property crimes also saw meaningful decreases, including a 27 percent reduction in burglaries and a 10 percent drop in stolen vehicles. Shoplifting incidents decreased by 11 percent overall, with a 25 percent decline in Tysons Corner.

Traffic safety also improved significantly, with motor vehicle fatalities down 53 percent and pedestrian deaths down 20 percent. These outcomes reflect continued focus on enforcement, education, and community-based safety initiatives.

These results are not by chance. They are the product of strong policies, proactive policing, and a shared commitment between law enforcement and our community. Together, these efforts continue to make Fairfax County a safe place to live, work, and raise a family. I would like to thank FCPD officers, leadership, and all of the County agencies who play an important role in keeping our community safe.

Avoid the Trap: Toll Payment Text Scam Circulating

Residents have reported receiving fraudulent text messages stating they owe unpaid toll charges and must make an immediate payment to avoid penalties or legal action. The messages claim to be from the General District Court for Fairfax County in an effort to appear legitimate and pressure recipients into responding. These messages often include a link or QR code directing recipients to a website designed to steal personal or financial information.

These messages are not legitimate. Scammers frequently impersonate government agencies or transportation services to create a sense of urgency and pressure victims into making payments or providing sensitive information.

How to Protect Yourself

- Do not click on links
- Do not scan QR codes in suspicious messages.
- Do not share personal or financial information through text messages
- Verify the claim directly through its official website.
- Delete the message and report it as spam.
- Notify your bank immediately if you provided bank account or financial information.
- File a police report if you believe you have been a victim of identity theft or another scam. Residents can report incidents to FCPD's [Financial Crimes Unit](#) through their online portal.

Drones Launched as First Responder Program

This technology allows responding personnel to better assess situation.



The Fairfax County Police Department has launched its Drone as First Responder (DFR) program, an initiative designed to enhance emergency response and improve situational awareness for first responders.

Operated from FCPD's **Real Time Crime Center (RTCC)**, DFR drones provide rapid aerial views of incidents, giving officers and first responders valuable information about what is happening before they arrive on scene. This technology allows responding personnel to better assess situations, allocate resources more effectively, and enhance overall public safety.

The DFR program is operated by FCPD and supports emergency responses involving the Fairfax County Fire and Rescue Department (FRD), strengthening coordination between public safety agencies during critical incidents.

DFR drones can assist in a variety of situations, including missing persons, crash scenes, fire and medical emergencies, traffic incidents, felony arrest support, and other emergencies where aerial awareness can support a faster and safer response.

Deployment locations are being established throughout Fairfax County. Over the coming months, each district station is expected to have at least one DFR launch location, with approximately 18 sites anticipated to be operational by this summer.

The program utilizes American-made Skydio drones operated by trained personnel assigned to the Real Time Crime Center. These drones are equipped with advanced safety features designed to support safe flight operations and are used by numerous law enforcement agencies across the country.

The Drone as First Responder program is designed to complement FCPD's existing aviation resources. The helicopter unit will continue to respond to incidents as needed, while drones provide an additional tool to quickly gather information and assist officers and first responders on the ground.

Since the program's initial deployment, Drone as First Responder operations have already supported officers responding to calls across Fairfax County by providing real-time aerial awareness during active incidents and helping guide responding units more



effectively.

Coordinated Arrest Following License Plate Reader Alert: RTCC deployed a DFR drone after a License Plate Reader (LPR) alert identified a suspect vehicle. The drone located the vehicle in a nearby parking lot and provided live aerial footage to supervisors. Officers used the real-time view to coordinate an arrest plan while maintaining distance from the area. The drone monitored the scene until the suspect returned to the vehicle, allowing officers to safely take the individual into custody. Numerous items of stolen property were recovered from inside the vehicle.

Domestic Incident Suspect Located in Fair Oaks: Officers responded to a domestic incident where a man threatened a family member with a baseball bat. When officers arrived, the suspect fled on foot through nearby yards and over fences. A DFR drone was deployed and maintained visual contact with the suspect as he attempted to evade officers. Responding units were guided to the suspect's location and he was safely taken into custody.

Stolen Vehicle Tracked Following LPR Alert: Officers responded to Springfield Town Center after a License Plate Reader (LPR) alert identified a vehicle associated with a stolen license plate. When officers attempted to stop the vehicle, it fled. A DFR drone tracked the suspect vehicle from above, providing real-time updates and situational awareness to officers during the incident.

Weapons Call Resolved Safely in Fair Oaks: Officers responded to reports of a man pointing a bow and arrow at passing vehicles. A DFR drone was deployed and quickly determined the individual was holding a stick, not a weapon. This aerial assessment allowed officers to safely approach and resolve the situation without escalation.

As the program continues to expand, FCPD will work closely with public safety partners and the community to ensure this technology is used responsibly and effectively. The Drone as First Responder program reflects FCPD's continued commitment to leveraging technology to enhance emergency response and support the safety of Fairfax County residents.

Patient First

Spring Allergy Season Is Upon Us



As winter winds down, do you find yourself dreading the approach of allergy season? Don't worry, you're not alone.

"Seasonal allergies are very common for this time of year, and it is important to know the symptoms, the steps to reduce allergy symptoms, and when to seek urgent care for allergies," says Dr. Mark Paster, a staff physician with Patient First.

Here are some helpful tips and information on allergies and how to prevent them.

What are allergies?

Allergic reactions occur when your body comes into contact with an allergen. Your body identifies this substance as harmful, even when it is not. Then, when you come into contact with that allergen again, it reacts to it, causing allergy symptoms. Springtime allergies are most often due to tree pollen and in areas with more humid climates, outdoor mold. Grass pollen is a big cause of summer allergies, while weed pollen can bring on fall allergies.

What are the symptoms?

Allergy symptoms vary from person to person and depend on the particular allergy. Some common symptoms include itchy, watery eyes; sneezing; runny nose; and congestion. If your seasonal allergies are generally mild, nasal sprays and oral antihistamines can help manage the symptoms. If over-the-counter treatments do not reduce your symptoms, talk with a physician about a prescription or other treatment.

What steps can be taken to reduce allergy symptoms?

- Start taking over-the-counter antihistamines when high pollen counts are forecast, even before your symptoms start.
- Stay indoors on dry, windy days. The best time to go outside is after a rain, which helps clear pollen from the air.

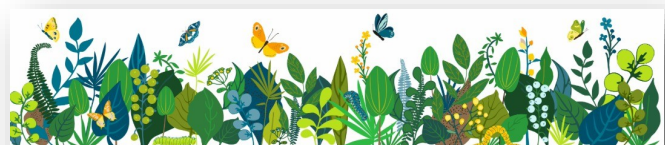
- Keep windows and doors closed – Restricting the amount of outside air that comes into your home may help those with air-borne allergen sensitivities.
- Delegate lawn mowing, weed pulling, and other gardening chores that stir up allergens.
- After spending time outside, take a shower to rinse pollen from your skin and hair and put on clean clothes.
- Wear a face mask if you do outside chores
- Use air conditioning in your house and car.
- Use high-efficiency air filters and change them frequently.
- Keep indoor air dry with a dehumidifier.
- Finally, do a deep cleaning of your home every spring. We hope these tips help make your spring the best it can be. Physician and Physician Extenders at Patient First treat many illnesses and injuries at our urgent care centers, including allergies.

Patient First doctors are available to discuss these and other ways that you can treat allergy symptoms.

PATIENT FIRST in ANNANDALE

7042A Little River Turnpike, Annandale, VA 22003
(Corner of Little River and John Marr Drive)

www.patientfirst.com/locations/washington-dc/annandale
703-343-7125



SPRING ALLERGIES

HERE ARE SOME WAYS TO HELP ALLEVIATE ALLERGY SYMPTOMS:

- Take over-the-counter antihistamines before high pollen counts are expected.
- Stay indoors on dry, windy days; go outside after it rains.
- Keep windows and doors closed to reduce outside allergens.
- Delegate yard work that stirs up allergens.
- Shower and change clothes after spending time outside.
- Use high-efficiency air filters and change them regularly.
- Use air conditioning in your home and car.
- Keep indoor air dry with a dehumidifier.
- Wear a mask when working outdoors.

Patient First

MKTG-0725

Message from Chamber Members

We are here to serve you.



WE’ER HERE TO SERVE YOU!

Located in downtown Annandale, Silverado serves Southwestern American favorites, including the World’s Greatest Fajitas. This family-friendly restaurant, offers lunch and dinner and has added a gluten friendly menu for those sensitive to gluten.

They accept reservations seven days a week, with online reservations being accepted up to 1 month in advance. Plan your gatherings, special occasions, and business lunches now.

You can also place your order online at SilveradoVa.com or on the GAR app. Call for hours.

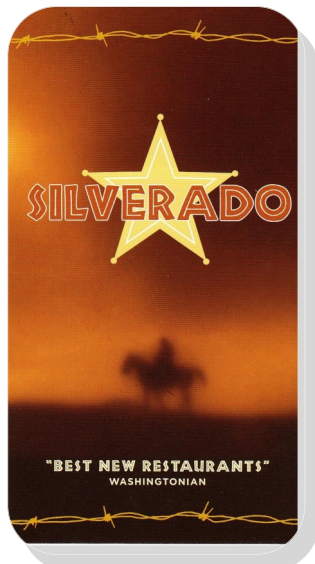
7052 Columbia Pike
Annandale, VA 22003 (in the Annandale Shopping Center)
(703) 354-4560 . www.silveradova.com

LAMBROS GOLDSMITH

Lambros Goldsmiths is a family owned and operated, full service Fine Jewelry retailer. Nestled here in Annandale since 1987 is their Flagship Store offering uniquely hand-crafted Fine Jewelry at competitive prices.

Precious stones from around the world are hand selected by award-winning, Master Goldsmith Lambros Magiafas, and then set into custom made settings that are designed by Lambros himself who is an artist and a goldsmith unlike any other jeweler today. Inspired by the ancient designs of his native Greece as well as uniquely modern designs, Lambros creates exquisite jewelry with a tasteful touch. Hand crafted and self-designed, no piece is ever created exactly the same, adding personality and charm to each artistic and matchless piece.

7137 Little River Turnpike, Annandale
(703) 354-1038 . www.lambrosgoldsmith.com



www.lambrosgoldsmith.com 703-354-1038 VA
202-462-5757 DC

FIVE Ways to Protect Your Property From Floods

Fairfax County Emergency Mgt.

As the climate changes in Fairfax County's and becomes warmer & weirder, it is imperative for residents to prepare and adjust. Flooding is the most common and costly natural disaster in the United States. And in Fairfax County, some areas are more prone to flooding. Here are five ways to be better prepared for floods.



1.) HOW TO PROTECT YOUR PROPERTY

- a) Cleaning gutters and downspouts can help prevent flooding at your home.
- b) Keeping storm drains clear of debris helps water to drain away from your property during heavy rainfall.
- c) If you live in a floodplain, investing in a sump pump can help remove water that may accumulate in your home during a storm.
- d) Fix cracks and gaps in your home's foundation to stop water from entering during downpours.
- e) Make sure your landscaping slopes away from your homes foundation to keep water from getting in when it rains.
- f) Check fencing to make sure it is high enough off the ground to allow water to flow out of your yard - make room for run-off!

2) KNOW YOUR FLOOD RISK; LEARN ABOUT FLOOD INSURANCE AND FLOODPLAINS

The level of flood risk is related to how close your property is to a floodplain, a sump, or an inadequate path for overland relief.

Use the Flood Risk Awareness Tool to view how these risk factors may affect your property and better understand your flood risk.

Flood insurance is not the same as homeowners insurance. Most homeowners' insurance policies do not cover flooding. In Fairfax County, the average flood insurance costs between \$400 and \$1,000 annually. Learn more about flood insurance or speak with your homeowner's insurance agent. Check out our Digital Flood Insurance Rate Map.

3) APPLY FOR FLOOD MITIGATION ASSISTANCE

For those looking to safeguard their homes from flood damage, our Flood Mitigation Assistance Program can help. The program, which reimburses 50 percent of eligible floodproofing project costs — up to \$5,000 per property — is open to homeowners, HOAs, condo associations, and places of worship.

4) BE SAFE WHEN YOU'RE OUTSIDE

“Turn Around Don't Drown” stresses the importance of not driving or walking through flood waters. More than half of all flood-related drownings occur when someone attempts to drive

through flood water. The second highest percentage of deaths is from people walking into or close to flood waters. Many roads flood in Fairfax County - turn around, don't drown.

Also, if you're outside during heavy rains, be careful around rivers, creeks and other bodies of water that may rise rapidly.

5) LEARN HOW FAIRFAX COUNTY RESPONDS TO FLOODS

Several county departments play a role in flood preparedness and response.

Our **Department of Public Works and Environmental Services** responds to service requests and implements projects to mitigate structural flooding in floodplains. For maintenance of county storm drains, assistance in determining who maintains a storm drain, and questions about storm drainage easements, use the Storm Drainage Problem Report Form or call the Maintenance & Stormwater Management Division at 703-877-2800, TTY 711.

The **Northern Virginia Soil and Water Conservation District** provides onsite technical assistance to property owners to minimize drainage impacts.

The **Department of Emergency Management and Security** provides many tools, including the Community Emergency Response Guide.

Our **Office of Environmental and Energy Coordination** is leading the Resilient Fairfax efforts to help understand and plan for climate changes.

If there's a flooded road, heed the advice of turn around, don't drown. During heavy rains, our **Fire and Rescue Department** is frequently deployed to conduct swift water rescues.

Insurance Insights

How To Establish A Trust To Distribute Life Insurance Proceeds

Virginia Kinneman
Kinneman Insurance

[Life insurance](#) provides an important safety net for many families. If you are young, raising a family, and going about your life, you may not think about this type of coverage.

However, what if something were to happen to you? Life insurance coverage could help to provide your loved ones with the support they need to carry on with their day to day lives. In some homes, you may wish to manage these funds carefully. A trust may be able to provide you with that support.

What Happens After Death?

After an individual with a life insurance policy dies, the policy goes into effect. In a matter of weeks, the policy sends a payment to the listed beneficiary. This is a person or trust that you decide on. If you leave it explicitly to a person, that person is able to use the funds for any need he or she has.

In this scenario, you have very little control over how that money is to be spent after your passing. You cannot require your loved one to pay for the home's mortgage. You cannot require the funds to go to pay for a disabled child. However, if you list the trust as the beneficiary, you can maintain more control.

How Does the Trust Work?

It is important to work with a licensed financial planner to establish the trust. This is a legally binding document. The trust acts much like a separate person. When you die, the proceeds from the policy go directly into the trust. You establish the trust with specific guidelines. This includes naming someone to manage it. You also set guidelines for the use of the funds within it. You gain significant control over those funds and can make key decisions about their use.

The first step is to obtain a life insurance policy that meets your needs. Your insurance agent can help you with this task. You will then want to speak to your agent about your desire to create a trust.

Most insurance agents do not establish trusts personally. However, most family lawyers will do so – and agents can relay pertinent insurance information to them. Your financial estate planner can also help with this task, if you'd prefer.

Once in place, you can elect to create the life insurance policy as you would like to. Be sure to inform your loved ones of your plans. And, be sure to speak to the person you name to manage the trust so they understands your goals. For more information on establishing life insurance, contact one of our agents.



KINNEMAN INSURANCE
50 S Pickett St No. 20-A, Alexandria, VA 22304
703-823-8800
www.kinnemaninsurance.com

The Golden Years

Healthy Eating for Older Adults

Deena Imbriglia
Kinneman Insurance



As we get older, it's important to eat well. Changes in your body result in lower energy and caloric requirements. It is, therefore, important to reduce portion sizes if activity is low, and to cut down on sugary snacks. Here are some of the best selections of foods from a variety of food groups.

What to Eat? No single food provides all the nutrients you need. It is important to have a wide variety of foods from the following food groups.

Fruits & Vegetables; Potatoes, breads, rice & pasta; Cereals; Dairy (or alternative products); Beans, peas & lentils; Fish, eggs and other proteins; Oils & spreads.

“Superfoods” are minimally processed foods that are nutrient dense and usually contain healthy fats, vitamins, minerals, antioxidants and other compounds found to promote good health and prevent illness and disease. Here are some of the best ones to include in your daily diet.

Dark leafy greens (Kale & Spinach); Cruciferous vegetables (Broccoli, Cabbage, Brussel Sprouts); Blueberries & Avocados (Help delay cognitive decline and rich in antioxidants; Nuts & Seeds (Chia, Hemp & Flax seeds are rich in Omega-3 fatty acids and fibers which fight inflammation; Eggs (High in Protein); Fatty fish (Salmon, Herring, Trout & Maceral are great sources of protein; Plain Greek yogurt (high in Protein, calcium & Probiotics to aid digestion and prevent infection.

Older adults are living longer. Making an effort to eat healthy can help you continue to enjoy an active lifestyle well into your 80s and 90s.

Home Instead Senior Care

7058 Columbia Pike, Annandale, VA 22003
703-740-6644 . www.homeinstead.com

(In the Annandale Shopping Center at Gallows Road)

A Parent's Guide

Helping Children Navigate the Digital World

Fairfax County Family Services



Social media and other online tools are not all good or bad, but they have an undeniable effect on children and teens. While there are some positive aspects to online interactions such as opportunities for learning and making friends, it also has been linked to anxiety, depression, and other mental health problems. It's important for parents and caregivers to understand these effects and help children use online media in a healthy way.

Encourage Positive Online Experiences

- **Promote Positive Content:** Encourage children to explore positive, educational, and age-appropriate content. This can help them learn new things, develop interests, and engage in healthy interactions.
- **Set Boundaries:** Establish clear rules for screen time. Use parental controls, limit how much time they spend online, and decide which activities are appropriate. This helps prevent overuse and exposure to harmful content.
- **Stay Involved:** Keep track of what your children are doing online. Regularly check in with them about their digital activities and experiences. Create safe spaces to ensure your children know they can come to you with any concerns or issues they encounter online.


Set Your Children up for Success

- **Teach Critical Thinking:** Help children learn to evaluate the content they see online. Encourage them to ask questions about whether the information is reliable and what the intentions behind it might be.
- **Discuss Media Messages:** Talk openly about the messages children see in digital media. Discuss topics like body image, unrealistic portrayals of life, and how social media can affect self-esteem.
- **Encourage Skepticism:** Teach children to be skeptical of information that seems too good to be true or overly negative. Explain the importance of checking information from multiple sources. **Promote Healthy Habits**

- **Model Good Behavior:** Set a good example by using digital media in a healthy way yourself. Show children how to balance screen time with other activities and take breaks from digital devices.
- **Encourage Offline Activities:** Suggest activities that don't involve screens, such as sports, reading, or spending time outdoors. These can help reduce stress and improve overall well-being.
- **Create Technology Free Zones:** Designate certain areas of the home, like the dinner table or bedrooms, as tech-free zones. This encourages family interaction and helps improve sleep quality.

Address Online Risks

- **Recognize Warning Signs:** Be aware of signs that your child may be experiencing anxiety or depression related to digital media use, such as withdrawal from activities, changes in mood, or sleep disturbances.
- **Seek Professional Help:** If you notice significant changes in your child's behavior or mental health, consider seeking help from a mental health professional. They can provide guidance and support tailored to your child's needs. Online media is a big part of people's lives, and it can have both positive and negative effects on their mental health. By modeling and encouraging positive online experiences, openly communicating with your children, setting some age-appropriate boundaries, and keeping an eye out for warning signs, parents and caregivers can prepare young people to navigate the digital world in a healthy way.

★ ★ ★ ★ ★  ★ ★ ★ ★ ★

Douglas P. Harden

3512 King Arthur Road (478) 714-1144
Annandale, Virginia, 22003 douglasharden1@gmail.com

ANNANDALE SHOPPING CENTER

SERVING ANNANDALE SINCE 1957
COLUMBIA PIKE AND GALLOWS ROAD 703-256-2730
www.annandaleshoppingcenter.com

Artisans United Great Classes Now Offered



Adding color to our lives and tapping into our creativity are great things to focus on. Annandale is a vibrant cultural center, with many performing groups and arts-focused activities. Artisans United has been part of the Annandale community for more than 35 years. During that time the organization has offered a wide variety of hand-made crafts by local artists in our gallery as well as hosting a variety of craft demonstrations, classes, and other activities to further our purpose of preserving, promoting, and developing the arts and crafts.

Since June 2023, AU has offered classes showcasing the various arts and crafts our member artists engage in. Students of all ages have painted a scene of birch trees in sunset on canvas and designs on rocks, carved a spoon from a wood block, learned to weave a decorative basket, learned to use polymer and decorated a pen, created a greeting card with a pop-up rose, and more. Classes currently are scheduled in needle-felting, wood carving and mosaic glass, with more to come.

Most classes are suitable for students from about age 8 and up. A few have older minimum ages for safety reasons. Classes are designed so no experience is necessary and are taught by the multi-talented artists from the Craft Gallery of Artisans United or one of the member craft guilds.

In addition to these classes, Artisans United is working with local community groups to offer classes for youth and families in the area.

To learn more or sign up for a class, contact Artisans United at 703-941-0202 or visit the Craft Gallery at 4022 Hummer Road, Annandale (in the Fred M. Packard Center, in the Annandale Community Park). The Craft Gallery is open 10-4 Tuesday through Saturday and 1-4 on Sundays; closed on Mondays



Summer Day Camps in Annandale

Kenwood School & Summer Day Camp
Est. 1957



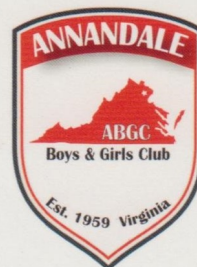
955 Sunset Ln, Annandale, VA 22003
(703) 256-4712
www.kenwoodschoo.com
admissions@kenwoodschoo.com

HAPMUDO
MARTIAL ARTS

Lee's Hapmudo Martial Arts Studio

7036 Columbia Pike . Annandale, VA 22003
703-750-3330 . webmaster@hapmudo.net
www.hapmudo.net

**Annandale Boys' & Girls' Club, Inc.
(ABGC)**



4216 Annandale Road
Annandale, VA 22003

Office #: (703) 941-ABGC (2242)

Email: abgc@abgc.org

www.abgc.org

Time to Sponsor the Mason District Little League



Current Mason District Little League

The Mason District Little League is currently seeking sponsorship from Annandale businesses and organizations. Donations and Sponsorships are used to help keep the league operating by helping to buy equipment, making field improvements, covering scholarships to help families afford to have their kids play in the league, and more!

Mason District Little League is completely run by volunteers. Show your support for the volunteers and families by sponsoring the league and show your brand to the community. Great benefits and visibility for your banner.

MASON DISTRICT LITTLE LEAGUE

4270 John Marr Drive
Annandale, Va 22003
571-544-6355
www.mdll.org



SweetFrog Frozen Yogurt

The Secret Garden Outdoor Patio Awaits



Located in the Annandale Shopping Center between Mathnasium and the largely expanded Collector's World is *sweetFrog* who creates the best frozen yogurt experience you've ever had!

Here you create your own combination of delicious, soft-serve premium frozen yogurt then finish it off with any toppings you choose. The toppings bar is stocked fresh every day with the best ingredients for a light snack, a decadent dessert and everything in between.

sweetFrog Frozen Yogurt began when an entrepreneur and his family moved to Richmond, VA, in 2009. At that time, frozen yogurt shops were primarily located on the West Coast, but they became attracted to the concept because of its simplicity and low cost. Even in the midst of an unfriendly economy, they felt the time was right to enter the frozen yogurt market.

You can host a birthday party or an after game celebration at *sweetFrog* or bring you day campers for that special treat. Now open is "The Secret Garden" patio for outdoor parties.

sweetFrog Premium Frozen Yogurt: (703) 559-3904
Columbia Pike at Gallows Road Annandale, VA 22003
www.sweetfrog.com/partyinquiry/frozen-yogurt-annandale/35587

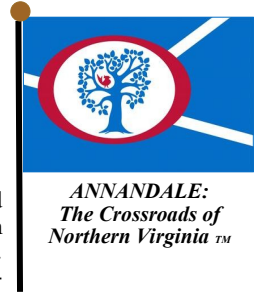
HOURS:

12:00 pm to 9:00 pm Monday through Thurs.
12:00 pm to 10:00 pm on Saturday
12:00 pm to 9:00 pm on Sunday



Chamber Chat:

News, notices & bulletins posted by Annandale Chamber Members



The Annandale Shopping Center is in full bloom and ready to serve the needs of the community. Visit Beanetics, Silverado, Aldi Grocery, Mathnasium, Tiffany's Bakery, Hair Unik, Collector's World, Eden Nails, Hapmudo Martial Arts, Home Instead Senior Care, H&R Block, Enterprise Rent-a-Car, the Annandale Barber Shop, SweetFrog, Annandale Photo, Collector's World, Pupusas Express, Cue Club, Burger King, Express Shoe Repair & Alterations, Crimson Coward, International Dance, Jet's Pizza, and Kitchen & Bath Solutions, who are all waiting to serve you. 7000 Columbia Pike at Gallows Road. www.annandaleshoppingcenter.com.

Secret Garden to the Gallows Road side of our building. Here you can enjoy summer time with your family. Join us soon for a sweetFrog experience. 7002 Columbia Pike at Gallows Road in the Annandale Shopping Center. 703-559-3904.

Annandale Boys & Girls Club: Sign up for email alerts or text "follow annandalebtc" to 40404 on your cell phone for text alerts. Twitter at twitter.com/AnnandaleBGC. Register for Summer Sports now. Facebook at www.facebook.com/AnnandaleBGC 703-941-ABGC

Burke and Herbert Bank: Stop in to your local Burke & Herbert Bank Branch at 4235 Annandale Road and check out our renovations. It features a new customer greeting station, approachable teller line, and redesigned offices that provide comfort and privacy. Member FDIC

Crimson Coward: Experience the freshest Nashville Hot Chicken in the Annandale. At Crimson Coward, we only use premium, all-natural, Non-GMO chicken, free from hormones and antibiotics, ensuring every bite is as wholesome as it is delicious. Visit any day of the week for the freshest hand-breaded Nashville Hot Chicken. We're open daily for dine-in, take-out, and delivery. 7004 Columbia Pike, Annandale, VA 22003. (571)378-0854 crimsoncoward.com

Demaine Funeral Home continues to serve Greater Annandale, as we have for over 50 years! Stop in or call and request a free personal planning guide, which allows you to record all of the important information your loved ones will need. Our preplanning specialists are always ready to answer questions. 5308 Backlick Road, Springfield, VA 22151. 703-941-94287) to set up an appointment to discuss how to prepare for the future.

ENDEAVOR News Magazine: Advertise in *The ENDEAVOR News Magazine*, Annandale's popular news magazine. Stay in touch with local happenings, learn more about Annandale's history, discover new business enterprises, and celebrate events in Annandale. Current issue available at www.annandalechamber.com For information about advertising rates (discounted to Chamber members) email: info@annandalechamber.com

Haven of Northern VA is a nonprofit, nonsectarian community organization of trained volunteers that offers emotional support to the bereaved, the seriously ill, the dying and to their families and friends. **GROUP WORKSHOPS OFFERED AND IN PERSON INDIVIDUAL SUPPORT:** One-to-one sessions, Face-to-face, online or by telephone. 4606 Ravensworth Rd, Annandale 703-941-7000 . havenofnova@verizon.net

WISA Solutions: Is your home in need of a makeover? Is it time to replace your roof? We offer a free estimate using a drone so you can see the state of your current roof while we walk you through your replacement options. Family run home town business for over 25 years with Annandale roots. www.wisadc.com or 703-337-4344

sweetFrog in Annandale has been blessed with the overwhelming support from the community since we opened. We offer a variety of ice cream flavors with inside seating, outdoor front seating and now in our

DBURKEDESIGNS, LLC

CUSTOM-DESIGNED FURNITURE
JEWELRY/KEEPSAKE BOXES

DBURKEDESIGNS.COM DBURKEDESIGNS@COX.NET



Deena Imbriglia
Community Liaison

(703) 750-6644 (24/7)
(703) 750-6649 fax
deena.imbriglia@homeinstead.com

Sager Inc.
7058 Columbia Pike
Annandale, VA 22003
HomeInstead.com/annandale
like us on Facebook
facebook.com/fairfaxhomecare

Kenwood Summer Day Camp

Pick Your Weeks, Extended Day, & Family Registration Available



At Kenwood Summer Day Camp the children not only go on exciting trips every day but also have a wide variety of activities to keep them entertained while they are at camp. When the campers arrive in the morning they are greeted by our friendly camp counselors and immediately go join their friends on our large, wooded playground. Our playground equipment is top notch but you will likely say goodbye to your child as they are running to join the basketball or kickball game in progress on the blacktop. As the day warms up the campers go in groups to one of our 5 themed rooms to cool off and play.

We offer fun activities for students from kindergarten to 8th grade.

Fieldtrips Include

Pirate Cruise
 Medieval Times
 Adventure Times USA
 Central Park Funland
 Kings Dominion
 Six Flags and much more!

Gym

Basketball, volleyball, and relay races are played in a nice, air conditioned environment.

Game Room

Board games, air hockey, Foosball tables, and a Wii with a projector.

Art Room

Weekly arts & crafts projects to make and take home.

Video Game Room

Jam packed with PlayStation consoles and lots of games to choose from.

4955 Sunset Lane, Annandale VA. 22003
 703-256-4711 admissions@kenwoodschool.com

Hapmudo Summer Day Camp

Good Old Fashion Games and Sports Activities for a Summer Full of FUN.



Summer Programs include well supervised field trips for swimming and many child friendly activities to promote health, social interaction, and just plain fun. YSL Hapmudo Studios of Annandale offers a 10 week Summer Camp Program with a wide variety of activities for students K-7th. Martial Arts, Sports, Crafts, Organized Games, Weekly themed camps, Swimming, Academics and more. Students have fun and learn a lot during the summer break in a healthy and positive environment. Space fills quickly, enroll now! We also have Spring/Winter Break camps available.

Hapmudo Martial Arts Studio

7036 Columbia Pike, Annandale, VA 22003
 703-750-3330 ~ webmaster@hapmudo.net
www.HapmudoVA.com
www.youtube.com/TeamYSL

202.643.5113



LET THE GOOD TIMES ROLL
 KONA ICE OF ANNANDALE

Year Round Farmers' Markets



Farm Fresh Mosaic Market

2920 District Ave. Fairfax, VA (Mosaic District)
Sundays 10 am—2 pm Year Round
(202) 391-7353
www.freshfarm.org/markets/mosaic

Located in the thriving shopping district of the Mosaic neighborhood in Fairfax, this family-friendly market is the perfect spot to shop for locally grown fruits and vegetables, mushrooms, grass-fed meats and pastured eggs, dairy products, ferments, sweet and savory baked goods, pastries, kombucha, cold-pressed juices, coffee, ice cream, prepared foods, handmade dog treats, and more!

Falls Church Farmers Market

City Hall Parking Lot -
300 Park Ave. Falls Church, VA 22046 . 703-248-5024
www.fallschurchva.gov/547/Farmers-Market

Every Saturday Year Round

Saturdays 9:00 am - Noon Jan. - March
Saturdays 8:00 am - Noon April-Dec.
Market Mgr.: Jennifer Brady, jwww.fallschurchva.gov/547/Farmers-Market

Located just minutes from Annandale and Metro accessible from the east and west Falls Church Metro stations, Falls Church City's Farmers Market boasts more than 50 vendors during peak season and more than 40 during the winter months. The market strives to support local farmers while also helping protect the environment by reducing packaging and transportation demands.

Seasonal Farmers' Markets



Organized by the Fairfax County Park Authority, the two Annandale Farmers' Markets offer a wide variety of freshly picked fruits, vegetables, herbs and cut flowers. There are also fresh eggs, baked goods, fresh pasta, honey, jam, teas and cider to purchase. Milk, cheese products and homemade ice cream, along with a wide array of meat products, round out the edible delights offered. If gardening is an interest, many vendors have small plants at the beginning of the season, while other vendors have larger landscape plants for those ambitious projects. Master Gardener Plant Clinic on site at both Mason District and Wakefield Park, to answer questions about plants in your landscape.

Mason District Park

6621 Columbia Pike, Annandale, VA 22003 . 703-941-1730.
Thursdays May 7 - October 29
8:00 AM to NOON

AVAILABLE AT THIS MARKET: Annandale's Beanetics Coffee, it pies, cookies, sweet breads, gluten free baked goods, fruits, berries and vegetables galore, gifs, dried lavender, variety of teas, spices & spice mixes, veal, been pork, lamb, chicken, range free eggs, potted herbs and honey.

Wakefield Park

8100 Braddock Road, Springfield, VA 22009
Wednesdays May 6- October 28
2:00-6:00 PM

AVAILABLE AT THIS MARKET: Breads, patisserie, home-made pies, French bread, slow grown healthy flavorful meat and eggs, apple butter, apple cider, & apple sauce, dried apples, jam & canned peaches, variety of salsa, dry and fresh herbs, mushrooms, herb plants, and numerous fruit, berry, and vegetable vendors.

Meet the Artisan

Dan Burke



Dan Burke came to woodworking after a career in academics and research. He received a doctorate in microbiology from Purdue University and then spent over 20 years as a researcher and teacher in molecular biology at several universities (University of Illinois, Mercer University and Seton Hall University), serving as Chairman of Biology at the latter two institutions. He then spent seven years working on educational reform in K-12 math and science at the National Science Foundation as Senior Staff Associate for Education System Reform. In this position, he worked with the Super-intendents of the 25 largest urban school districts in the country and a number of consortia of high-poverty rural school districts. After leaving NSF, Dan started the educational research group at the Center for Naval Analysis Corporation. He retired from CNAC but went back to work at the request of New York University to serve as

Dan has published a number of papers in biology research journals and articles on curriculum development, teacher professional development, and the use of computer modeling to better understand the function of school systems. He has been awarded a number of grants in both molecular biology and education research.

His career as a woodworker began when he and his wife, Susan, moved to Annandale in 1996. They wanted a built-in bookcase for their new home so, at the suggestion of his wife, he took a basic wood-working course at the Woodworkers Club in Vienna. "It was fun, and showed me I could build the bookcase. After building the bookcase (six months of work), he had leftover wood that was used to build a small bookcase. Still having some "nice looking scraps" he tried his hand at making jewelry and keepsake boxes and found he really enjoyed building them. Eventually all their family and friends had gift boxes and the house was filled with furniture he had built. This forced him into a sort of "semi-professional" status. "If I didn't sell my work, I would have no place for it."

"The furniture and box making then evolved together," he says, noting that to him, what he does is both fun and creative, alt-

hough he doesn't think of himself as an artist. "There's a challenge of getting better technically and also there is something at the end that you can feel and touch that is the embodiment of an idea that you had when you started," he says.

What undergirds the work is the wood itself. "I like to make things that are useful and true to the wood," Burke says. "Working with wood is great. The way it

looks, the way it smells, the way it feels." "I will see a piece of wood that looks cool and buy it," he says, sometimes holding it for years before determining what to make with it.

He is fond of American hardwoods like oak, walnut, cherry, and various maples, but also uses exotics, such as bloodwood, canary and zebra wood, among others. He has also used barn wood, sandstone, and ceramic tile in his work.

"I'm not good at thinking geometrically, so my designs come from a feeling, rather than a vision. I like fairly simple things," Dan says. "In furniture, I'm inspired by the Shaker, Arts and Crafts, Mission, Greene and Greene, and Japanese Tansu." All of these are styles that often incorporate the joinery as part of



Professor Burke in his workshop.
DBurkeDesigns@cox.net



Curved Wood Jewelry box for men or women.



Library or Bed Steps with Built-In Storage



their design and each has particular unique touches. Also shaping his work is what he has learned from a variety of wonderful woodworkers including Richard Gordon, Stephen Proctor, and Doug Stowe.

Two concepts underlie his designs: to make pieces that highlight the wood grain and color and that one wants to touch and use. Thus, he uses relatively simple designs based on squares, rectangles, and gentle curves, and often incorporates woods of different colors or hues into his work. In much of his work, as in the styles that influence him, the joinery is highlighted and other particular elements are incorporated. "I also use a variety of textures, from extremely smooth to rough hewn, to complement the wood." He is especially drawn to incorporating pieces that have what others might see as imperfections.

In building furniture and boxes, all of this comes together in an interesting artistic and design exercise. One begins considering the basic elements: its overall shape (linear, curved, or a combination of the two); what wood to use (light, dark, open versus closed grain, single or multiple species); what joinery to use (structural or also used as design elements); what hardware will be needed (hinges and/or door or drawer pulls, and, if so what kind and style (wooden, metal) and how does the hardware complement the look of the piece. One must also consider the piece's interior as it relates to its use and, when possible, how it can provide an attractive surprise when opened. Finally, what finish to use, (oil- or water-based, satin, semi-gloss, or gloss) and how durable it should be.

As a box builder, it took a little while to determine what designs would attract people and that he enjoyed building. But his work has gained a following. People use his boxes to hold jewelry and other keepsakes of course, but they have also been used as a vessel to hold the wing bone of an auk by an artist who does bird illustrations. His pieces have also become funerary urns, holding the ashes of loved ones.

His commissioned furniture pieces have included a day bed, a variety of bookcases, cabinets, and chests, and a number of tables. One particularly interesting piece is a dining table made of Muninga, a wood from Zimbabwe. The wood was obtained by repurposing a living room set that the client's parents had brought to this country when they emigrated over forty years ago.

His work can be seen at the Artisans United Gallery in the Annandale Community Park just off of Hummer Road in Annandale.

Artisans United Gallery and Gift Shop
4022 Hummer Rd, Annandale, VA 22003
(inside the Annandale Community Park)

Photos Opposite

Top Photo: Cabinet-Wardrobe

Middle Photo: Dining Table made from recycled wood

Bottom Photo: Spice Cabinet



Real Estate Market: Recent Changes

What is Beneficial to Both Buyers and Sellers

Pat Sawhney
ReMax Realty Group




shepherd's center
OF ANNANDALE SPRINGFIELD

Free transportation for Annandale-Springfield seniors to local medical appointments

7610 Newcastle Drive · Annandale 22003
703-941-1419 · shepherdscas@vacoxmail.com

I always say that the, “Only Constant is Change”. Following the NAR commission Lawsuit in :2024 major brokerages took action. Rocket Mortgage acquired Redfin, Compass absorbed Anywhere Real Estate which had acquired 5 other brokerages. Then Compass sued Zillow, challenging Zillow’s ban on listings marketed elsewhere first. Rocket Mortgage and Compass announced a 3-year exclusive partnership on Feb. 26, 2026, allowing Private Exclusive Listings.

Now these companies exclusively can post their listings on Redfin, sidestepping Zillow. As of March 16, Compass Coming Soon listings began appearing on Redfin. Their objective is to have more portal traffic, to capture more mortgage leads for Rocket. This may have a negative effect for sellers.

So, RE/MAX now is one of 5 founding partners for Zillow Preview, with more reach than Compass-Redfin. This will be a plus for these real estate agencies as Zillow & Trulia reach nearly 4x more consumers than Redfin. This partnership will be alongside BrightMLS where all our listings are initially posted. There will be transparency in this arrangement for RE/MAX and any transparency-aligned brokerage, with full data transparent to buyers.

Our RE/MAX Realty Group owner conducted a Town Hall for our 7 offices to explain and allow us to discuss these new changes. Going forward, this all sounds beneficial for our buyer and seller clients!



BRONSON PARRY
GENERAL MANAGER

7026 Columbia Pike, Annandale VA 22003
Main +248-525-0610

bronsonpizza18@gmail.com
jetspizza.com

f t i




Pat Sawhney
Realtor®
Certified Senior Specialist

O: 703-642-3380
C: 703-395-9214
patsawhney42@gmail.com




5501 Backlick Road #100
Springfield, VA 22151

Scan my QR code for access to my videos!
GetMovingWithPat.com



McGILLICUDDY
Commercial Properties

Gregory McGillicuddy
President

T: 703-625-0714 E: gregMcgillicuddy@gmail.com
8521 Leesburg Pike Suite 300 Tysons, VA 22182
Samson Commercial Tel: 703-378-8810

Book Sale April 22-26th

At the George Mason Library



George Mason Friends will host their highly anticipated, semi-annual book sale from Wednesday, April 22 through Sunday, April 26 at the George Mason Regional Library (7001 Little River Turnpike, Annandale).

A special preview sale will take place on Wednesday evening (5–8 PM) with a \$20 entry fee per adult.

The general sale runs from Thursday through Sunday (10 AM–5:30 PM daily) with free entry.

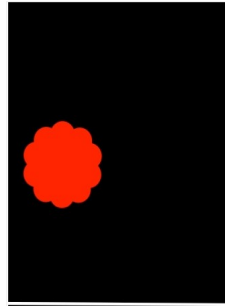
The sale features high-quality used books, CDs, and DVDs in various categories. Proceeds support Fairfax County Public Library’s Summer Reading Program, Library Foundation scholarships, Fall for the Book Festival, and programs/equipment at George Mason Regional Library. Come early for the best selection and return on Sunday for half-price bargains!

More details at georgemasonfriends.blogspot.com or contact georgemasonfriends@gmail.com / 703-813-6616.

Brandon L. Yeckel
Funeral Director



Demaine Funeral Home
5308 Backlick Road
Springfield, VA 22151
703-941-9428
Fax 703-658-5123
Brandon.Yeckel@DignityMemorial.com



The ABGC is proud to provide the opportunity for so many Annandale youth and their families to enjoy their Spring season on the field and on the court. Here are some of our programs now underway:

- Soccer
- Baseball
- T-Ball
- Lacrosse
- AAU Basketball

Spring is Here

Join the Action
at the
Annandale Boys & Girls Club

ABGC is committed to provide our kids with the best community youth sports organization in the state.

We never turn away a participant in financial need and serve thousands of youth each year thanks to our committed volunteer coaches and supporters. *You* can help.

**Volunteer
Donate
Register**

www.abgc.org

SAVE THESE DATES:

Tuesday, August 4, 2026: National Night Out at the Annandale Shopping Center, Columbia Pike at Gallows Rd. Free Family Fun 6-9 pm

Saturday, October 24, 2026: The Annandale Parade 10 am – Noon.



www.kenwoodschoo.com/services/ 703-256-4711
703-256-4711

Bennet Helfgott



MOBILITY CITY
WE FIX WHEELCHAIRS & SCOOTERS...AND MORE!
Repairs | Rentals | Sales

5586 General Washington Drive
Alexandria, VA 22312
Store: (703) 772-5030
Cell: (703) 350-5149
bennet.helfgott@mobilitycity.com



Leave Us a Review



RE/MAX REALTY GROUP




Pat Sawhney
Realtor®
Certified Senior Specialist

O: 703-642-3380
C: 703-395-9214
patsawhney42@gmail.com

5501 Backlick Road #100
Springfield, VA 22151



Scan my QR code for access to my videos!
GetMovingWithPat.com

Calling on all Classic Cars to Participate

American Legion
Bicentennial Post 1976

Diane Ramsey
Manager

4206 Daniels Avenue
Annandale, Va 22003
703-941-9608 Post
703-408-9123 Cell
703-941-0136 Fax
Rpcomm6759@aol.com
Post1976.org



BURKE & HERBERT BANK

ARPINE TENKERIAN
ASSISTANT BRANCH MANAGER, BANK OFFICER , NMLS# 1527525

O: 703-519-1627 F: 703-519-1628
atenkerian@burkeandherbertbank.com

4235 Annandale Road • Annandale • VA 22003

The Annandale Parade

Saturday, October 24, 2026
10:00 AM - Noon



WATCH THE FUN
Columbia Pike

www.annandalechamber.com

Scouts
Dancers
Marching Bands
Storybook Characters
Fire Trucks
Antique Cars
Clowns

Event organized by the Annandale Chamber of Commerce. The Annandale Parade will be accessible to people with disabilities.