



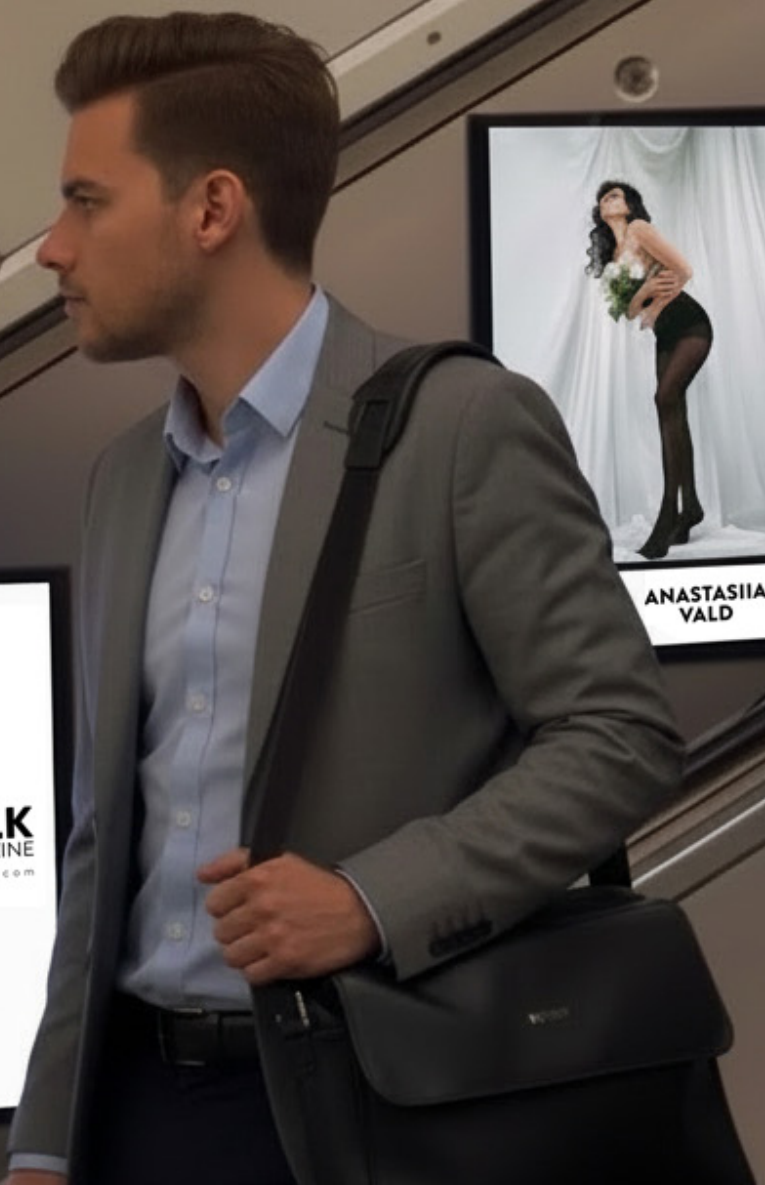
ARTIST TALK
MAGAZINE

March 2016

www.artisttalkmagazine.com



ARTIST TALK
MAGAZINE
www.artisttalkmagazine.com



global

LDN ARTIST TALK EXHIBITION



London Underground - 10 - 12 October 2025
Shoreditch - 14 - 19 October 2025

- | | | | | | |
|-----------------------|----------------------------|------------------|-------------------------|------------------|---------------------|
| Saki Watanabe | E.A.Toft | Samantha Straede | Darrel Overton | Gamez Kartal | Dessi Vitchevs |
| Jessie Philipp Fenner | Huinyu Lu | Natalya Raduena | Daniel Agre | Karol Z | Ruanan Shan |
| EHRHART | Anastasiia Vaid | Schiela Ali | Fiona Maciver Macdonald | Kirsteen Thomson | Michaela Currie |
| Crissy Oakfield | Jia Man | Taniya Dharani | Te-Sian Shih | Eman Khalifa | Marie Teresa Malner |
| Xue Gao | Stavri Georgiou | Angela Thousless | Peijun Cao | Lamees Farooq | Shereena Habib |
| Cynthia Manguera | Martina Grubmuller (Mg) | Sarah Asante | Mariko Kumon | Leigh Witherell | Ben Handy |
| Grant Milne | WWW.ARTISTTALKMAGAZINE.COM | | | | |



COFFEE MATTERS

COFFEE



159A



TALK EXHIBITION



London - 14 - 19 October 2025
www.artisttalkmagazine.com

- Saki Wetanegara
- E.A.Tofte
- Samantha Straede
- Darrel Overton
- Ganze Kartal
- Dessi Vitcheva
- Juras Philipp
- Hsinyu Lu
- Natalya Raduencz
- Daniel Agta
- Karol Z
- Ruonan Shen
- EHRHART
- Anastasiia Vald
- Schiela Ali
- Fiona Maciver Macdonald
- Kirsteen Thomson
- Michaela Currie
- Grant Milne
- Crissy Oak
- Jia Man
- Taniya Dha
- Te-Sian Sh
- Emam Khal
- Maria Teresa M
- Xue Cao
- Stavro Georg
- Angela Zhou
- Peijun Ca
- Lamoes Faro
- Shereena Hal
- Cynthia Mangu
- Martina Grubnueller
- Sarah Asanto
- Mariko Kusano
- Leigh Withere
- Ben Hendy
- Tianyun Zhao

ARTIST TALK MAGAZINE



LDN

ARTIST TALK EXHIBITION



Shoreditch - 14 - 19 October 2025
Espacio Gallery, 159 Bethnal Green Road, London E2 7DG

- | | | | | | |
|------------------------|--------------------------|------------------|-------------------------|------------------|---------------------|
| Saki Watanabe | E.A.Tofte | Samantha Straede | Darrel Overton | Gamze Kartal | Dessi Vitcheva |
| Juras Philipp Fenner | Hsinyu Lu | Natalya Raduenz | Daniel Agra | Karol Z | Ruonan Shen |
| EHRHART | Anastasiia Vald | Schiela Ali | Fiona Maciver Macdonald | Kirsteen Thomson | Michaela Currie |
| Crissy Oakfield | Jia Man | Taniya Dharani | Te-Sian Shih | Eman Khalifa | Maria Teresa Molner |
| Xue Gao | Stavri Georgiou | Angela Thouless | Peijun Cao | Lamees Farooq | Shereena Habib |
| Cynthia Manguera | Martina Grubmueller (Mg) | Sarah Asante | Mariko Kumon | Leigh Witherell | Ben Hendy |
| Grant Milne | | | | | |

WWW.ARTISTTALKMAGAZINE.COM



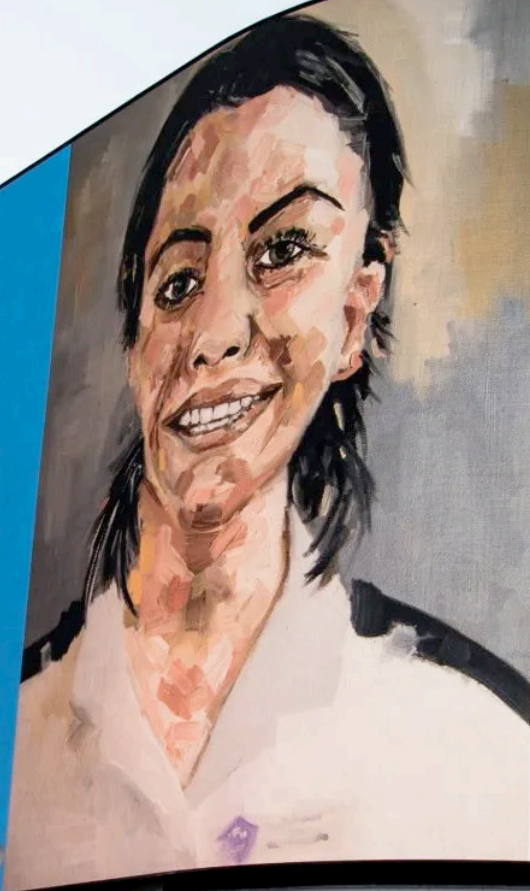




THANK YOU NHS HEROES

Discover 20 portraits of our NHS Heroes in Artist Talk Magazine issue 12
#artisttalkheroes. On behalf of the readers and Artist Talk, we would
like to thank you, for all the good you have done and keep on doing.

www.artisttalkmagazine.com



ARTIST TALK MAGAZINE

ALSO FEATURING: NATALIA FOLA, PAULO ANSEL, PETE REY, PONGCHIL,
SHANNON MCKEOGH, MARY STEFANO, KIM MURPHY, MARY BECK,
CHOI WOO-YEUL, CHRISTINA WALSH & DANIELLE NEUSSE

HANNAH MILNE
PAINTED BY GRANT MILNE



ARTIST TALK
NEW YORK

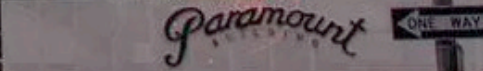


05 - 10 MAY 2026





ARTIST TALK
NEW YORK



Catalina Diaz	Vanessa Wanninger	
Alison Doolley	Tara	Violet Headley
Steve Jensen	AKSHITA LAD	
Maria Esteve	Cristian Diez-Sanchez	Cristian Diez-Sanchez
Stefania Gagliardi	Devanshi Patnaik	Kindle González

POLICE

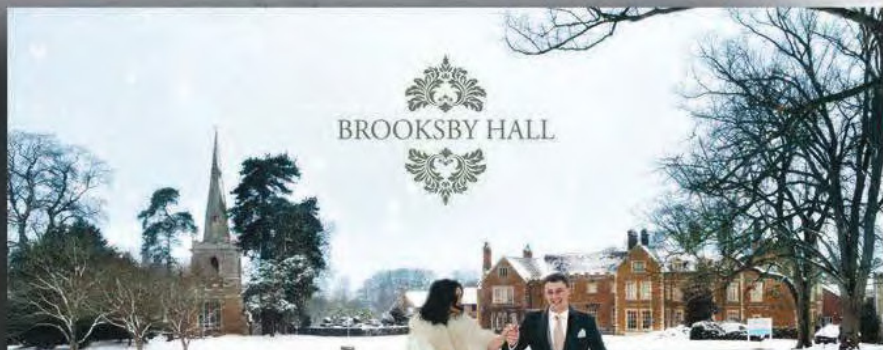
AT&T

ided

ONE WAY

TOURO UNIVERSITY

every smartphone



BROOKSBY HALL

£2,018 WINTER WEDDING PACKAGE

A Brooksby Hall wedding is the perfect start to married life.

**** SPECIAL OFFER ** AVAILABLE FOR ALL REMAINING DATES DURING DECEMBER 2018 AND JANUARY/FEBRUARY 2019.**

Additional guests are welcome; these are charged at £50.00 per person. Terms & conditions apply.

If you would like an appointment with our Wedding Coordinator, please contact
Brooksby Hall, Brooksby, Melton Mowbray, Leicestershire, LE14 2LJ
T: 01664 855262
E: brooksbyhall@brooksbymelton.ac.uk
www.brooksbyhall.co.uk

BROOKSBY HALL

Brooksby Hall's Grand Afternoon Tea

Sunday 20th January 2019 - Reservation times: 12.30pm, 1pm, 1.30pm



The perfect gift for Christmas

Treat a loved one to our Grand Afternoon Tea and we will send you a personalised voucher, free of charge. It is the perfect gift for the relative who has everything.

£15 per guest or £20 per guest to include a chilled glass of Champagne

Brooksby Hall, Brooksby, Melton Mowbray, Leicestershire, LE14 2LJ
T: 01664 855262
E: brooksbyhall@brooksbymelton.ac.uk



The Plan 2015

Our big bold
plan to be the best

Find out how you can play your
part. Search 'The Plan 2015' on **Splash**





FURTHER EDUCATION COURSE GUIDE 2019/20



Careers, not just courses



FIND YOUR PATHWAY IN TO THE WORLD OF PLANTS...

Brooksbury Melfton College has a rich heritage as a leading provider of land-based courses in the East Midlands, and for generations, students have gained excellent experience on our 850 acre Brooksbury campus, getting hands-on training in every aspect of horticulture. We offer the perfect space to study as we are able to provide a practical focus, combining theory with hands-on experience.

Our Horticulture students benefit from new glass Houses, featuring automatic vent and temperature controls, which ensure optimum conditions for growing plants.

The Horticultural industry is one of the largest employers in the UK. A career in Horticulture could mean anything from a hands-on gardener, to a research scientist. Come and discuss your pathway with our expert team.

Career Opportunities

Our Horticulture students have gone on to secure jobs as landscapers, nursery and garden centre managers, gardeners, grounds-keepers, estates managers and event plant breeders.

Pathways include field and turf landscaping, garden design, production and retail, and sports turf.

EARN UP TO £28,000 AS A SELF EMPLOYED LANDSCAPER

BMC offers a range of Royal Horticultural Society Courses, Short Courses and Apprenticeships in Armerity, Landscape and Sports Turf, for those who wish to further embrace their studies.

Our Partners



To find out more visit
www.brooksbymelfton.ac.uk/areas/horticulture

01664 855 444 | courses@brooksbymelfton.ac.uk

[@brooksbymelfton](https://twitter.com/brooksbymelfton) [/brooksbymelfton](https://facebook.com/brooksbymelfton) [@brooksbymelfton](https://instagram.com/brooksbymelfton)



LEICESTER CITY WOMEN'S FC ACADEMY

The Programme

If you are a budding footballer and are interested in any of the full-time Further or Higher Education courses offered at BMC, the Leicester City Women's Football Club Education Programme could be the perfect opportunity for you!

Students who undertake this programme will train on-site at our 850 acre Brooksbury Campus in the heart of the Leicestershire countryside, where they will benefit from a high quality, professional set-up which is also home to the Leicester Tigers and Marshfield Town FC Academies.

The aim of this programme is to support players in their development as elite players, helping them to develop/refresh skills both within the football arena and out. The programme will discover and develop the potential within each player through engagement with their technical, tactical, physical, mental and academic thought processes.

Facilities and Services

You will have access to:

- Full size 3G all-weather pitch
- Two grass pitches
- Strength and conditioning gym
- Sports hall
- Crash rooms and sports science laboratory
- Changing rooms
- Dietetic clinic
- UEFA A and UEFA B qualified coaches
- Sports analysis
- Sports psychologist
- Personal trainers
- Nutrition and dietetic specialist
- Personalised educational and football development plan
- 8 Hours of training per week alongside studying a full-time BMC course


Courses at BMC

You will undertake a full-time course at BMC alongside the football programme run by Leicester City Women's FC coaches. This can be any of the courses offered at our Brooksbury Campus or Melfton Campus, providing that you meet the entry requirements.



[@brooksbymelfton](https://twitter.com/brooksbymelfton) [/brooksbymelfton](https://facebook.com/brooksbymelfton) [@brooksbymelfton](https://instagram.com/brooksbymelfton)

BMC **PERFORMING ARTS DEGREES**



These courses will help to develop you as a highly skilled professional practitioner through innovative and creative performance techniques, with a firm focus on practice-as-research.

OUR DEGREE SUBJECTS:

- ANIMAL MANAGEMENT
- DIGITAL FILM PRODUCTION
- EQUINE PERFORMANCE SCIENCE
- PERFORMING ARTS
- SPORTS SCIENCE
- TEACHER TRAINING

UEA University of East Angles **University of Bolton**

01664 855 444
www.brooksbymelton.ac.uk

BMC **SPORTS SCIENCE DEGREES**



This specialist programme allows students to develop a higher level of understanding in sports science, with a particular focus on the areas of strength and conditioning, performance analysis and coaching, whilst gaining industry experience in elite sport.


OUR DEGREE SUBJECTS:

- ANIMAL MANAGEMENT
- DIGITAL FILM PRODUCTION
- EQUINE PERFORMANCE SCIENCE
- PERFORMING ARTS
- SPORTS SCIENCE
- TEACHER TRAINING

UEA University of East Angles **University of Bolton**

01664 855 444
www.brooksbymelton.ac.uk

BMC **LEICESTER CITY WOMEN'S FC EDUCATION PROGRAMME**




The Education Programme allows female students of BMC to gain high level coaching from Leicester City Women's coaching staff with the potential to play for a number of their teams - including the first team - and also represent the college as a female football team, in the AFC leagues.

- Bespoke timetable - training 8 - 10 hours a week, in the mornings and afternoons.
- Professional facilities - also used by Leicester Tigers Academy and Mansfield Town Academy for their very own education programmes.
- Minibus transport between Melton and Booksey.
- Alongside ANY BMC Level 2, 3 or Degree course!

You will have access to: full-size 3G Pitch, two grass pitches, gym, sports hall, class rooms, changing rooms, onsite café, and a range of training activities at the Booksey Campus.

Interested? Contact jonathan@lccwfc.com



For further information on our courses visit
W: www.brooksbymelton.ac.uk
T: 01664 855 444
E: courseenquiries@brooksbymelton.ac.uk

[@brooksbymelton](https://www.facebook.com/brooksbymelton) [@brooksbymelton](https://www.instagram.com/brooksbymelton)

BMC **PRESENTS**

Avenue



MUSIC AND LYRICS BY ROBERT LOPEZ and JEFF MARK
BOOK BY JEFF WHITTY
BASED ON THE ORIGINAL CONCEPT BY ROBERT LOPEZ and JEFF MARK
ORCHESTRATIONS AND ARRANGEMENTS BY STEPHEN OREMIS
PUPPETS CONCEIVED AND DESIGNED BY ROCK LYON

This musical production is presented by arrangement with **Music Theatre International Europe**. All authorized performance materials are also supplied by MTI Europe. www.mti.com

Thursday 28th and Friday 29th June*

MELTON THEATRE
£13 Adults, £11 Concessions inclusive of the booking fee.



*AUDIENCE ATTENTION: Please note that Thursday night performance is rated as a 12 and Friday night performance is rated as a 15. Please contact the box office for further details.

01664 851 111
www.meltontheatre.co.uk

*Avenue Q has not been authorized or approved by the Jim Henson Company or Sesame Workshop, which have no responsibility for content.

BMC

MELTON CAMPUS



Beauty Therapy
Catering and Hospitality
Early Years
Film and TV Production
Hairdressing
Health and Social Care
Maths and English
Media Make-up
Performing Arts
Sports Massage
Teacher Training

For further information on our courses visit
W: www.brooksbymelton.ac.uk
T: 01664 855 444
E: courseenquiries@brooksbymelton.ac.uk

[@brooksbymelton](https://www.facebook.com/brooksbymelton) [@brooksbymelton](https://www.instagram.com/brooksbymelton)

BMC

BROOKSBY CAMPUS



Agriculture
Animal Care
Construction and Joinery
Countryside Management
Equine Studies
Floristry
Foundation Studies
Horticulture
Land-based Service Engineering
Maths and English
Motor Vehicle Engineering
Sport

For further information on our courses visit
W: www.brooksbymelton.ac.uk
T: 01664 855 444
E: courseenquiries@brooksbymelton.ac.uk

[@brooksbymelton](https://www.facebook.com/brooksbymelton) [@brooksbymelton](https://www.instagram.com/brooksbymelton)

The
OVERTON



Find joy, in elegance



SHOP NEW ARRIVALS >



MILNE
PUBLISHING



MELTDOWN

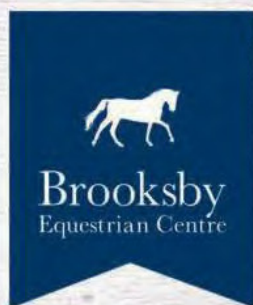
ARTIST TALK
MAGAZINE



CLARITY
YOUR
COUNSELLING



Leicestershire County Council, De Montfort University 2013



KUDEGRA
PRODUCTIONS



HOTEL TALK
MAGAZINE

