



O'Shannessy's
QUALITY TOURS

THE TOP END

Alice Springs to Darwin



11 DAY FULLY INCLUSIVE TOUR

21st June to 1st July, 2026

THE TOP END *Alice Springs to Darwin*

SUNDAY 21ST JUNE TO WEDNESDAY 1ST JULY, 2026

From the dry centre of Australia to the lush Top End we'll experience the beauty of this stunning part of Australia.

We fly to Alice Springs to start our journey up to the northern most capital city of Darwin, taking in a few cruises including Katherine Gorge, Yellow Water Cruise at Kakadu and Jumping Croc Cruise on the Adelaide River.

TOUR HIGHLIGHTS

- o Alice Springs Sightseeing Tour
- o School of the Air
- o Royal Flying Doctor Service
- o Earth Sanctuary-Quandong Homestead
- o Western MacDonnell Ranges
- o Standley Chasm
- o Simpsons Gap
- o Old Telegraph Station
- o Devils Marbles
- o Daly Waters
- o Tennant Creek
- o Warradjun Cultural Centre
- o Nitmiluk National Park
- o Katherine Hot Springs
- o Kakadu National Park
- o Nourlangie Rock
- o Darwin City Tour-Wartime Darwin
- o Litchfield National Park

CRUISES

- o Katherine Gorge Cruise
- o Yellow Water Sunset Cruise
- o Adelaide River-Jumping Croc Cruise
- o Darwin Sunset Cruise

FLIGHTS

- o Melbourne to Alice Springs
- o Darwin to Melbourne

MULTIPLE NIGHT STAYS

- o 2 nights in Katherine
- o 3 nights in Alice Springs and Darwin



COACH



FLIGHT



BOAT



SMALL GRP

As a thank you for travelling with O'Shannessy's Quality Tours, you will automatically receive a saving on the total tour price for your second and subsequent tours.

O'Shannessy's Quality Tours will match single travellers who wish to twin share with another single traveller of the same gender. However, if this is not possible, you will need to pay the Single Room Supplement..

If you are willing to twin share but are a smoker, have a CPAP machine or snore, you will need to pay a single supplement for a sole use room.



TOUR INCLUSIONS

- **Complimentary Chauffeur Driven Transfers.** Victorian passengers from Greater Melbourne, Bendigo, Torquay, Ballarat, Geelong, the Bellarine and Mornington Peninsulas, Phillip Island and selected areas of Gippsland will be picked up and returned home in a private chauffeured vehicle by one of our professional drivers. For passengers not within this pick up zone, or our interstate passengers, a quote can be provided for home pickup in extended areas.
- **Luxury Touring Coaches.** Our full size, 3 axle luxury coaches have only 32-36 passenger seats allowing you even more personal space and extra leg room. Our coaches are fitted with comfortable reclining seats with aisle arm rests, foot rests, seat belts, panoramic windows with blinds, refrigerator for passenger use, restroom, climate control air conditioning and Road Cam monitors which display the road ahead in real time. Each coach has a second door for easier entry and exit and touchless hand sanitizer dispensers at each entry to help keep everyone safe. Our coaches have full air suspension delivering a smooth and quiet ride which also allows us to lower the coach closer to the ground, making boarding and disembarking even easier.
- **Flights.** Economy flights from Melbourne to Alice Springs and Darwin to Melbourne.
- **Tour Directors.** Dedicated O'Shannessy's Quality Tours coach crew (tour directors) on board to ensure your travel experience is memorable.
- **Best Available Quality Accommodation.** Ensuite motel accommodation each night.
- **Attractions.** All tours and interest venues as per itinerary.
- **Meals.** All full cooked breakfasts, morning teas and lunches most days, and two course restaurant dinners daily. Three lunches at your own expense as per itinerary.
- **No Hidden Extras.** O'Shannessy's Quality Tours are fully inclusive.

TOUR COSTS

Twin Share Room First Tour:	\$8,295 per person
Twin Share Room Repeat Traveller 2 - 10 Tours:	\$8,195 per person
Twin Share Room Repeat Traveller 11 - 20 Tours:	\$8,145 per person
Twin Share Room Repeat Traveller 21+ Tours:	\$8,095 per person
Single Room Supplement:	\$1,420 per person

DEPOSIT
\$800pp
UPON
BOOKING



DAY 1

Sunday 21st June, 2026

MELBOURNE TO ALICE SPRINGS

Welcome to our holiday to the magnificent **Red Centre** touring all the way to the **Top End**. With chauffeured pickup from home, we travel to Melbourne Airport. Here we'll be greeted by an **O'Shannessy's Quality Tours** representative who will assist us with check in and see us onto the plane for our direct flight to Alice Springs. Upon our arrival, we will transfer to our first three night's accommodation. We have the rest of the afternoon to unpack and relax before we join the rest of the group for dinner.

Refreshments inflight

OVERNIGHT: Crowne Plaza Alice Springs Lasseters, ALICE SPRINGS ★★☆☆★

DAY 2

Monday 22nd June, 2026

EXPLORING ALICE SPRINGS

Welcome to "**The Alice**"! We begin today with a view of Alice Springs from **Anzac Hill**. From here we can see the **East** and **West MacDonnell Ranges**, the Stuart Highway, the **Todd River**, the Ghan Line and the prominent city buildings. We take a virtual journey into 'The World's Largest Classroom' which will leave us enlightened and inspired as we visit the **School of the Air**. The film and guide presentations reveal stories about the school and its students, sharing a distinctive history, outback lifestyle and world-renowned innovations of this uniquely Australian school. Next we visit the **Royal Flying Doctor Service** (RFDS). We hear the incredible history of one of the largest and most comprehensive aeromedical organisations in the world. Using the latest aviation, medical and communications technology, the RFDS delivers extensive primary health care and 24-hour emergency service to those who live, work and travel throughout Australia. We enjoy some free time this afternoon to relax or go for a swim. We have a special evening planned tonight. Just 15 minutes out of Alice is **Earth Sanctuary** - a World Nature Centre at **Quandong Homestead**. We will enjoy a mouth-watering bush BBQ with music and entertainment and experience the spirit of the outback through stories of the aboriginal dreamtime. We will even learn how to cook a swagman's damper! After dinner we can relax around the camp fire before heading back to the hotel.

OVERNIGHT: Crowne Plaza Alice Springs Lasseters, ALICE SPRINGS ★★☆☆★

WESTERN MACDONNELL RANGES

We have a great day in store as we explore the majestic **Western MacDonnell Ranges**. The natural beauty in this area is outstanding! Our first stop is at the monument of the **Reverend John Flynn**, founder of the Royal Flying Doctor Service. We continue the scenic drive to **Standley Chasm** with its towering walls; this is also where we'll enjoy our morning break. Next stop is beautiful **Simpsons Gap** where we can stretch our legs. We head back to town to visit the **Old Telegraph Station** for a tour and lunch. The Alice Springs Telegraph Station Historical Reserve marks the original site of the first European settlement in Alice Springs. It was established in 1871 to relay messages between Darwin and Adelaide along Australia's Overland Telegraph Line. This not only connected Australia's population centre's with the north of the country, but it also connected Australia up with the undersea telegraph network of the British Empire.

OVERNIGHT: Crowne Plaza Alice Springs Lasseters, ALICE SPRINGS ★★☆☆

ALICE SPRINGS TO TENNANT CREEK

This morning, we farewell Alice Springs and travel north on the Stuart Highway. We stop briefly at **Aileron** to see the "Anmatjere Man" standing proudly on a hill, overlooking his country, spear in hand., and another sculpture of a woman, child, and a lizard. We continue past **Ti Tree Creek** and historic **Barrow Creek**. Later this afternoon we spend some time at the "**Devils Marbles**" before arriving into **Tennant Creek**.

OVERNIGHT: Bluestone Motor Inn, TENNANT CREEK ★★☆☆





DAY 5

Thursday 25th June, 2026

DALY WATERS - KATHERINE

Today we will be travelling to what is termed the “Top End”. We lunch at **Daly Waters Pub**, a well-known spot for many of the air personnel who served in the Pacific during World War II. This afternoon, our journey takes us to **Katherine** where we settle into our next two nights accommodation.

OVERNIGHT: Knotts Crossing Resort, KATHERINE ★★☆☆☆

DAY 6

Friday 26th June, 2026

KATHERINE GORGE

This morning, we make our way to **Katherine Gorge**. Within the **Nitmiluk National Park** are 13 separate gorges of the extended system through which Katherine River flows. Sheer walls of sandstone dotted with ancient Aboriginal rock art surround the crystal waters of the **Katherine River** where freshwater crocodiles can be seen along the banks with flowering orchids and lilies. After our cruise, we can look through the **Visitors and Interpretive Centre**. Early afternoon, we visit the **Katherine Hot Springs**. Sit back and relax in the beautiful thermal pools. The bubbling natural spring has a constant temperature of approximately 25-30 degrees Celsius. Used by many as a way of healing, we can let our muscles unwind after a morning of cruising!! Back at the resort, we have the rest of the day free to relax and maybe take a swim in the pool.

Lunch at own expense and arrangement

OVERNIGHT: Knotts Crossing Resort, KATHERINE ★★☆☆☆

KAKADU - YELLOW WATERS CRUISE

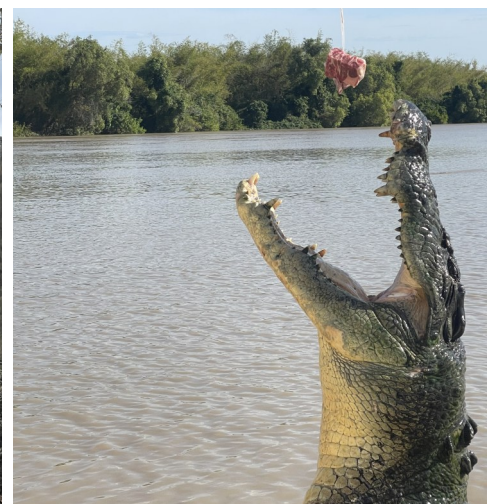
Today we are off to Kakadu National Park. Before we leave, **Deb Frosh - winner of the 2024 Tourism Brolga Award and National Tourism Award** - and an **accredited Kakadu guide** will join us from here to Darwin. She will offer a wonderfully in-depth insight into the lifestyle, culture, and landscape of this land. We'll travel to the old gold-mining town of **Pine Creek** before joining the Kakadu Highway into Kakadu National Park. We stop at the **Warradjan Cultural Centre** where we can explore various exhibits that showcase traditional stories, hunting techniques, and the natural history of the park. Close by is **Cooinda**; here we enjoy a cold luncheon, then have some free time to relax. We also have the opportunity to take an optional scenic flight over the incredible wetlands of **Kakadu National Park (own expense)** before, late afternoon boarding our magical **Yellow Water Sunset Cruise**. Nowhere else will we see such a concentration of so many species of diverse wildlife than here, including Brolgas, Egrets, Jabiru and hopefully Crocs!

OVERNIGHT: Cooinda Lodge Kakadu, KAKADU ★★★★★

KAKADU TO DARWIN

Our touring this morning includes **Nourlangie Rock**. There are a number of shelters in amongst this large outcrop. The shelters contain amazing paintings that represent the Aboriginal Dreaming, with depictions of Namandi spirits, both male and female figures and one with six fingers on each hand. Pigments are mostly of yellow, white and red ochre, with red ochre being used as a chalk to draw on the rock surface in some places. Deb will interpret the aboriginal art and it will be a most interesting morning. We stop for lunch on the way to **Adelaide River** where we join the **Jumping Croc Cruise** for some close encounters with the resident saltwater crocodiles! We then drive into Darwin, farewell Deb, thanking her for the amazing knowledge she has pass on to us, before settling into our accommodation for the next three nights.

OVERNIGHT: Doubletree by Hilton Esplanade, DARWIN ★★★★★





DAY 9

Monday 29th June, 2026

EXPLORING DARWIN

Today we take in the sights of Darwin. Many people aren't aware of the importance of Darwin during **World War II** so we'll look at the city as it is today and also learn about the involvement and history of the bombings of Darwin. The present city centre was established in 1869 and contains many of its remaining historic buildings such as the Old Court House and Government House. We see the new Parliament House built on the site of the Darwin Post Office bombed during the war, the port area plus the many other fascinating sights of Australia's northern gateway. Our tour concludes at **Stokes Hill Wharf** where there are a lot of options for lunch. This afternoon, we visit the **Flying Doctor Service and Bombing of Darwin tourist facility** - two iconic stories in the one iconic location! Returning to our hotel, we have the rest of the day to relax and enjoy the resort facilities – perhaps a dip in the pool or some retail therapy. Our day isn't over yet though! We enjoy dinner this evening while **cruising on Darwin Harbour**. It is a great way to see Darwin from the water.

Lunch at own expense and arrangement

OVERNIGHT: Doubletree by Hilton Esplanade, DARWIN ★★☆☆☆



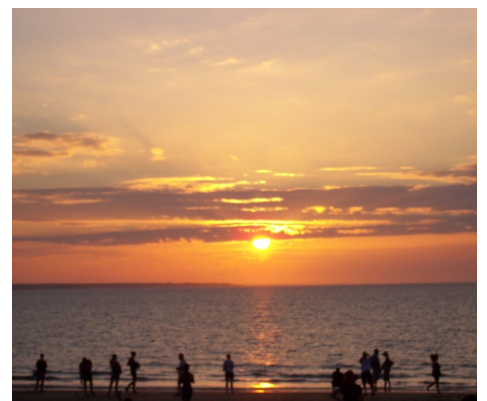
LITCHFIELD NATIONAL PARK

We spend the day touring **Litchfield National Park**. This National Park is very understated and offers an unforgettable day out. We travel through **Batchelor** to **Florence Falls** and admire the **Magnetic** and **Cathedral Termite Mounds**, some standing 16 feet (5 metres) high. We enjoy lunch at the Litchfield Café and have some free time at nearby **Wangi Falls**. This is a most relaxing area, perhaps take a swim or a walk. This evening, we will make our way to **Cullen Bay** for dinner together as we watch the sunset.

OVERNIGHT: Doubletree by Hilton Esplanade, DARWIN ★★☆☆☆

“... Litchfield National Park is home to several stunning waterfalls that cascade into crystal clear pools, iconic magnetic termite mounds and clusters of weathered sandstone pillars. It’s an ancient landscape shaped by water...”

nt.gov.au/parks/litchfield-national-park



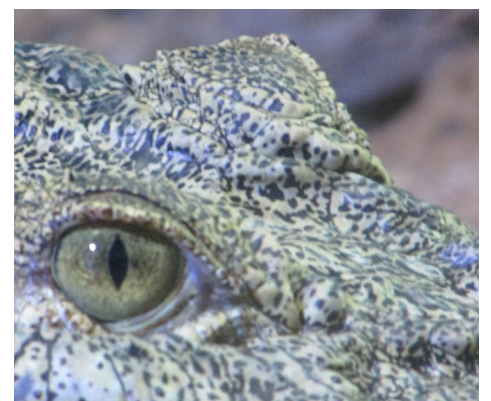
DARWIN TO MELBOURNE

After three wonderful nights in Darwin, it's time now to head for home. We'll transfer to Darwin Airport for the return flight to Melbourne. Upon arrival, our chauffeurs will be waiting to transport us home with many interesting stories to tell of our fantastic holiday in the **Top End**.

Lunch at own expense and arrangement / refreshments on flight

“...See the stars shine above
Australia's spiritual Red Centre heart
or the sun rise over majestic Uluru.
View the wildlife and wetlands of Kakadu
then enjoy tropical city vibes in Darwin.
Wherever you go in the Territory,
you'll discover unique places, people and
experiences like no other place on earth...”

northernterritory.com



PAYMENT AND CANCELLATION POLICY

Receipt of payment of funds will be taken as acceptance of O'Shannessy's Quality Tours conditions of travel for this tour. Prices include GST and all taxes. Deposit is fully refundable until **61 days** prior to departure date. Balance due on invoice.

Cancellation within 60 days of tour departure date

No Refund

On or after tour date departure

No Refund

If a tour is cancelled for any reason by O'Shannessy's Quality Tours before the departure date, all passengers will be offered the option of transferring to another tour of their choice, hold the funds in trust for a future tour or a full refund. There is no time limit as to when this must be used. If a lockdown is implemented while a tour is in progress, our first priority is the safety and wellbeing of our passengers and ensuring that we get each and every one of them home safely, and therefore we treat every situation individually. The Australian Government (see www.smarttraveller.gov.au) recommends all travellers no matter where you are going, obtain comprehensive travel insurance from a reputable provider. It may enable you to claim back the cost of your tour if you are unable to travel or have to cancel at late notice. Always read the PDS provided, to ensure the cover meets all of your needs. We are able to provide travel insurance through Nib Insurance.

CONDITIONS OF TRAVEL

These terms and conditions form the basis of the contract between You and O'Shannessy's Quality Tours (O'Shannessy's Quality Tours "We", "Us", or "Our" contract). It is important that You read the complete list of terms and conditions provided to you upon invoice carefully and that you understand your rights and obligations. A complete list will be provided upon invoice, alternatively they are available upon request via phone, mail, email or on our website. By agreeing to participate in a tour arranged by Us, You are deemed to have accepted these terms and conditions in full.

Any special requests, dietary/personal must be notified to Our office at the time of booking. All efforts will be made to accommodate any special requests. It is your responsibility to advise O'Shannessy's Quality Tours of any pre-existing medical conditions that may affect your ability to participate on the tour. No passenger will be permitted to embark on or continue the tour while their physical or mental condition is, in the opinion of any representative of O'Shannessy's Quality Tours, such as to render them incapable of caring for themselves, or whereby they become objectionable to other passengers or they become a hazard to themselves or other passengers. Passengers rotate seats in the coach daily to ensure fairness to all passengers. No exceptions will be made. The information presented in any printed publications, itineraries, brochures or touring programs is to the best of our knowledge correct at the time of publication. The itinerary may be subject to change without notice. Whilst every effort is made to adhere to the itinerary provided, O'Shannessy's Quality Tours reserves the right to alter the touring and attractions as dictated by circumstances and conditions outside the company's control. Alterations may be made to ensure the smooth running of the tour. O'Shannessy's Quality Tours cannot be held responsible for printing or typographical errors arising from unforeseen circumstances.

O'Shannessy's Quality Tours representatives/crew or any associated carrier, reserves the right at its discretion to exclude from a tour or to terminate the travel arrangements of any person during the course of the tour, without refund, of anyone who: Presents on the day of the tour departure as ill or unwell in any way, including but not limited to: cough, runny nose, sneezing, vomiting or temperature above 37.5 deg C, Is incapable of caring for themselves without a minder/carer, Is unable to cope with the requirements of the tour or who may need or require services or facilities that are not available, Fails to comply with the reasonable instructions of O'Shannessy's Quality Tours crew, Engages in undesirable behaviour or interferes with the enjoyment of other passengers, Is a hazard to themselves or other passengers and/or is likely to become objectionable to other passengers, O'Shannessy's Quality Tours staff and or third party suppliers. Anyone so excluded will be required to disembark at a safe public location, transport from which will be wholly their responsibility. However, if and where possible, O'Shannessy's Quality Tours staff may assist in obtaining transport. You agree that O'Shannessy's Quality Tours is released from all liability for You and You agree not to hold O'Shannessy's Quality Tours responsible for termination of Your travel arrangements.

UPCOMING TOURS *Available*

Whitsunday Experience - July 2026

Broome Winter Escape - August 2026

Canberra Floriade - September 2026

Travelling with like-minded, mature aged travellers means you'll experience a casual and relaxed atmosphere, where fellow travellers become new found friends.



KEEP IN TOUCH

Be sure to visit our website oshannessys.com.au where you'll be able to stay up to date with information, tour inspiration or simply enjoy sharing your travel experiences with us. You can also subscribe to our eNewsletter so you'll be the first to find out about our additional tours that pop up throughout the year.

You can find us on Facebook and excitingly also on Instagram.

We would love to see your tour pictures exploring Australia or travelling the world with O'Shannessy's Quality Tours and tag us in your travels.

#oshannessys #friendstotravelwith

O'Shannessy's Quality Tours reserves the right to make any alterations to this itinerary as necessary. O'Shannessy's Quality Tours will endeavour to notify you of any significant changes prior to your departure.

This itinerary supersedes all previous itineraries for this tour.

O'Shannessy's Quality Tours is Covid Clean accredited.

Details available on our website oshannessys.com.au



Toll Free: 1800 354 352
O'Shannessy's Quality Tours



www.oshannessys.com.au

2121 Point Nepean Road, Rye Vic 3941

enquiries@oshannessys.com.au

Copyright © O'Shannessy's Quality Tours